

The background of the slide features a large, semi-transparent seal of Monterey County, California. The seal is circular and contains a central figure, likely a grizzly bear, surrounded by the text "MONTEREY COUNTY CALIFORNIA" and the year "1850".

Evacuation & Transportation Plan

MONTEREY COUNTY OFFICE OF EMERGENCY SERVICES



Overview

- Annex to the EOP
- Updated 2020-2021
- Disaster Council Approved October 2021

COUNTY OF MONTEREY

OPERATIONAL AREA



EMERGENCY OPERATIONS PLAN

ANNEX | EVACUATION AND
TRANSPORTATION

April 2022

BOS REVIEW DRAFT



Operational Area Priorities

Life Safety

Reduce Suffering

Protect Property

Protect The Environment

Restore Basic Services

Help Facilitate Community
and Economic Resilience



The Plan

PURPOSE

Coordinate and Define Roles and Procedures for:

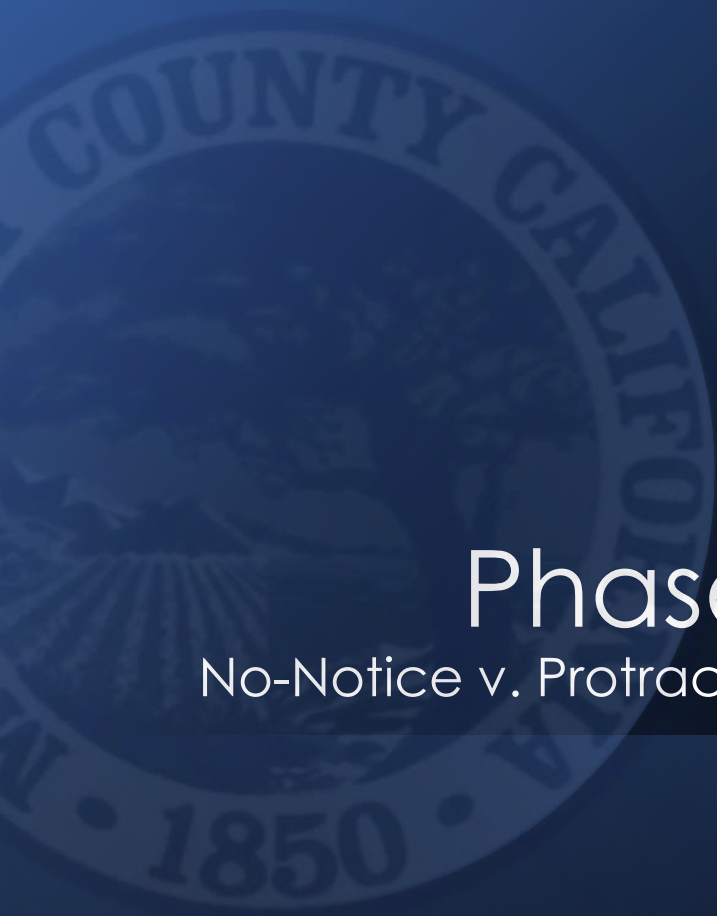
- Emergency and Public Messaging
- Pre-Identified Evacuation Zones
- Movement of Persons from an Area Determined Unsafe
- Movement of Persons with Access and/or Functional Needs
- Movement and Evacuation of Animals from an Area Determined Unsafe
- Repopulation of Evacuated Persons and Areas

OBJECTIVES

- Provide for **Safe and Effective Evacuation** of People and Animals From an Area Determined Unsafe
- Provide Accurate and **Timely Information**
- Use **Available** Transportation **Resources and Existing Infrastructure** to Evacuate
- **Collaborate with Local Partners** to Effect Evacuations
- Facilitate Activation of Shelters
- Facilitate **Security of Evacuated Areas**
- **Re-entry** to Evacuated Areas is **Safe and Timely**



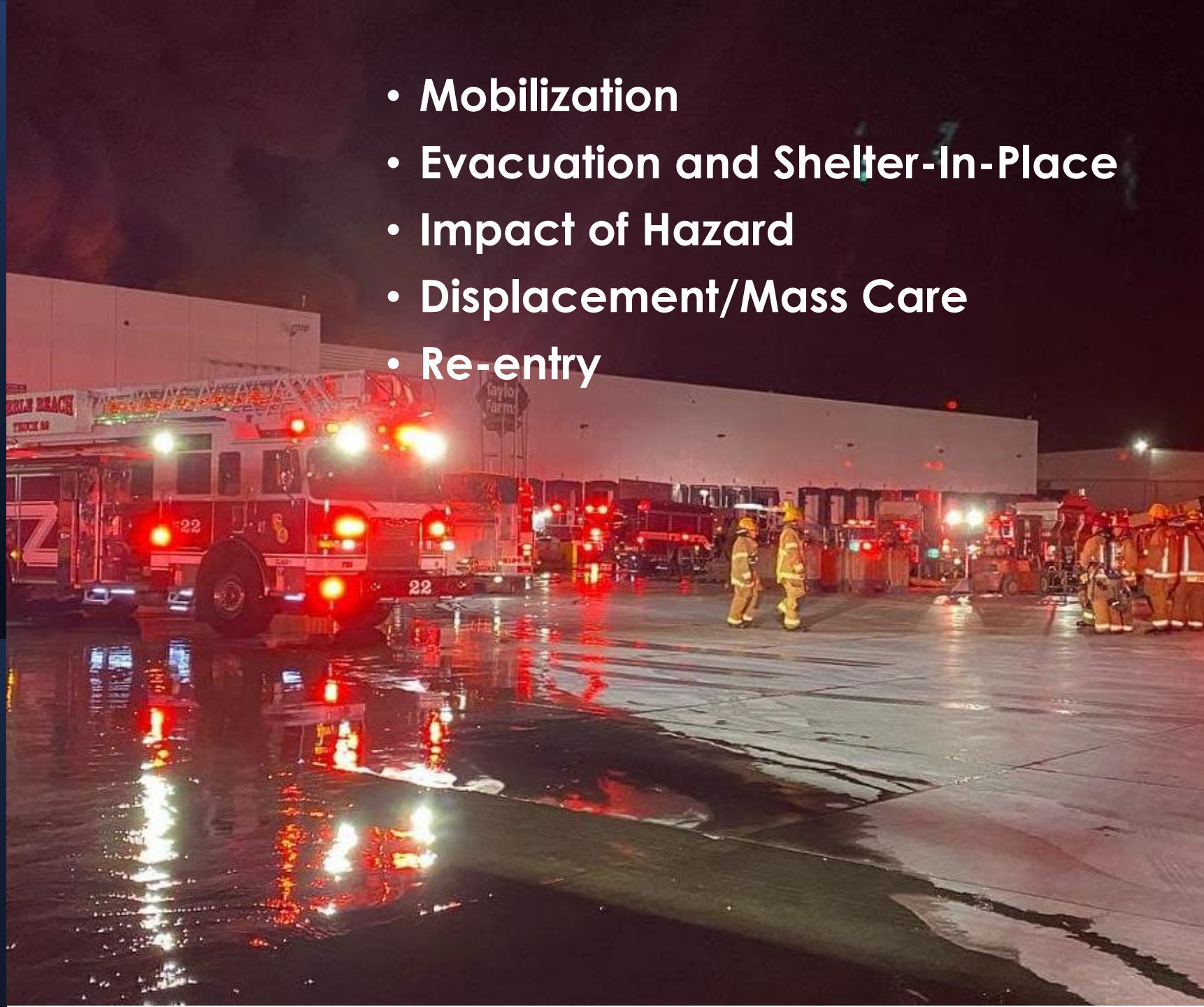
The goal of an evacuation is to move as few people as needed the shortest distance to safety for the least amount of time.

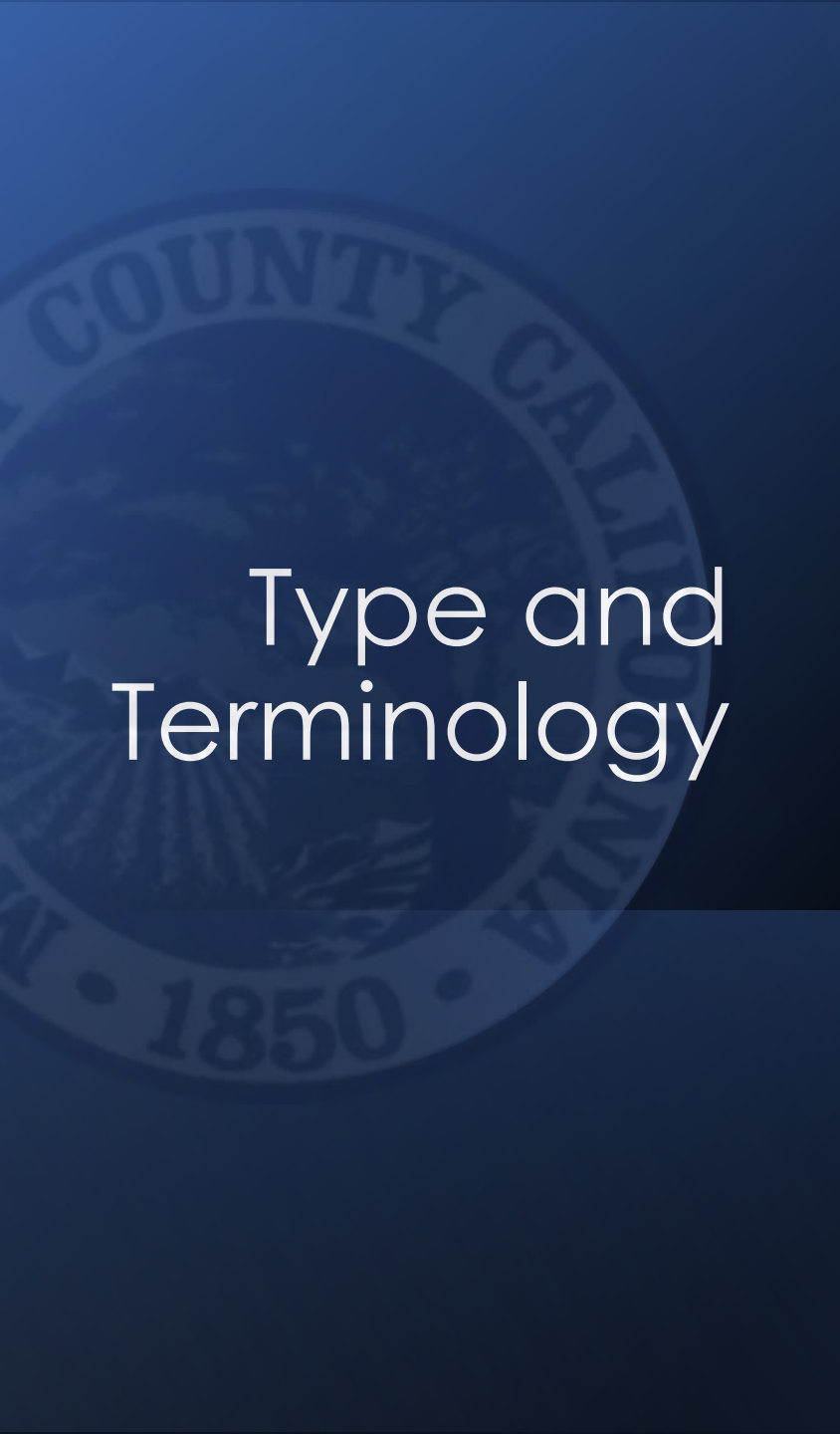


Phases

No-Notice v. Protracted

- Mobilization
- Evacuation and Shelter-In-Place
- Impact of Hazard
- Displacement/Mass Care
- Re-entry





Type and Terminology

- **Evacuation Warning:** Potential threat to life and/or property. Those who require additional time to evacuate, and those with pets and livestock should leave now.
- **Evacuation Order:** Immediate threat to life. This is a lawful order to leave now. The area is lawfully closed to public access.
- **Shelter in Place:** Go indoors. Shut and lock doors and windows. Prepare to self-sustain until further notice and/or contacted by emergency personnel for additional direction.
- **Evacuation Order(s) Lifted:** The formal announcement of lifting evacuations in an area currently under evacuation.
- **Hard Closure:** Closed to all traffic except Fire and Law Enforcement.
- **Soft Closure:** Closed to all traffic except Fire, Law Enforcement and critical Incident resources (i.e. Utility, Caltrans, City/County Roads etc. or those needed to repair or restore infrastructure).
- **Resident Only Closure:** Soft closure with the additional allowance of residents and local government agencies assisting with response and recovery.



Authority

- Recommendation: Incident Commander
- Enforcement: **Law Enforcement**
- Support: Office of Emergency Services



Process of Evacuating

- Identification of a threat or hazard
- Initial notification of response agencies/personnel, systems, and resources to establish incident command.
- Identification of threatened population.
- IC recommends evacuation to LE.
- LE requests notification of the public.
- LE mobilizes resources to enforce.
- Conducts “Door-to-door” Or “Knock And Talks”; reports to dispatch; tagging of structures and roads
- LE and PW establish closures.
- Emergency management establishes end point and coordinate transportation resources.





Assumptions & Challenges

- Most hazards or threats will provide some warning time (i.e. dam failure, flooding, wildfire)
- In some cases little to no warning will be possible (i.e. earthquake)
- Decisions on whether to evacuate or shelter-in-place will be situation specific and will include an analysis of the threat, anticipated duration, roadway conditions, health and safety issues, etc
- Incipient Stages of an Emergency are Confusing and Lack Appropriate Responder or Public Situational Awareness
- Evacuations should be initiated as soon as feasible when a threat has been identified
- Communications systems will generally be available – but systems may become overloaded or damaged in specific types of incidents (i.e. wildfire or earthquake)
- Alert and warning systems may not reach every intended evacuee
- 9-1-1 call centers may be overwhelmed
- Most people will self-evacuate in their own vehicles
- It may take time to fully implement local and County evacuation plans
- Most people at risk will evacuate when officials urge them to do so
- Some people will refuse to evacuate despite the risk
- People with Access and Functional Needs Cannot Evacuate Quickly

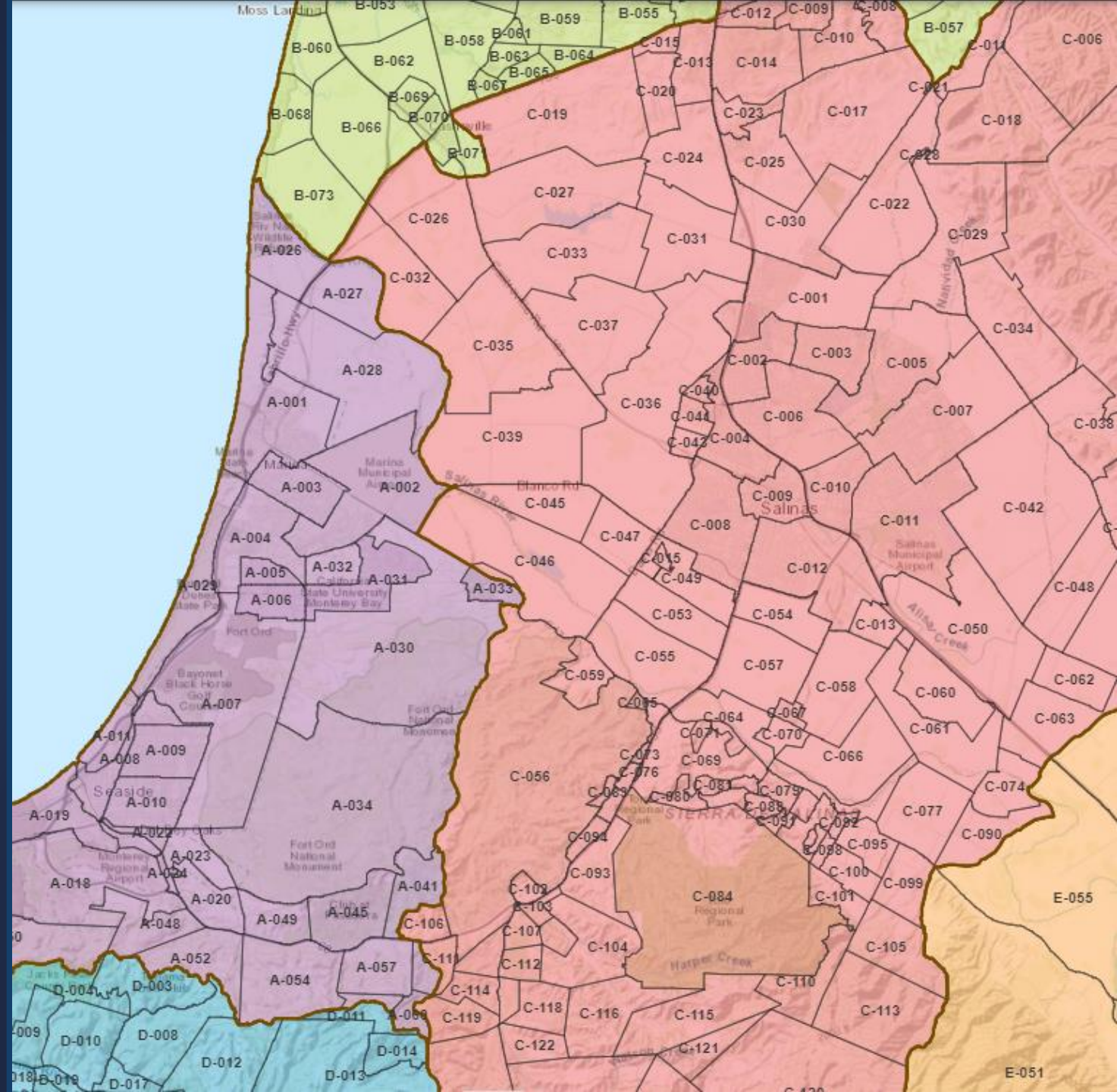
Evacuation Regions

- 1) Peninsula Region
- 2) North County Region
- 3) Salinas Region
- 4) Carmel Valley Region
- 5) Salinas Valley Region
- 6) Big Sur Region
- 7) South County Region



Evacuation Zones

- 1) Peninsula Region (A 1-63)
- 2) North County Region (B 1-74)
- 3) Salinas Region (C 1-127)
- 4) Carmel Valley Region (D 1-89)
- 5) Salinas Valley Region (E 1-60)
- 6) Big Sur Region (F 1-32)
- 7) South County Region (G 1-48)

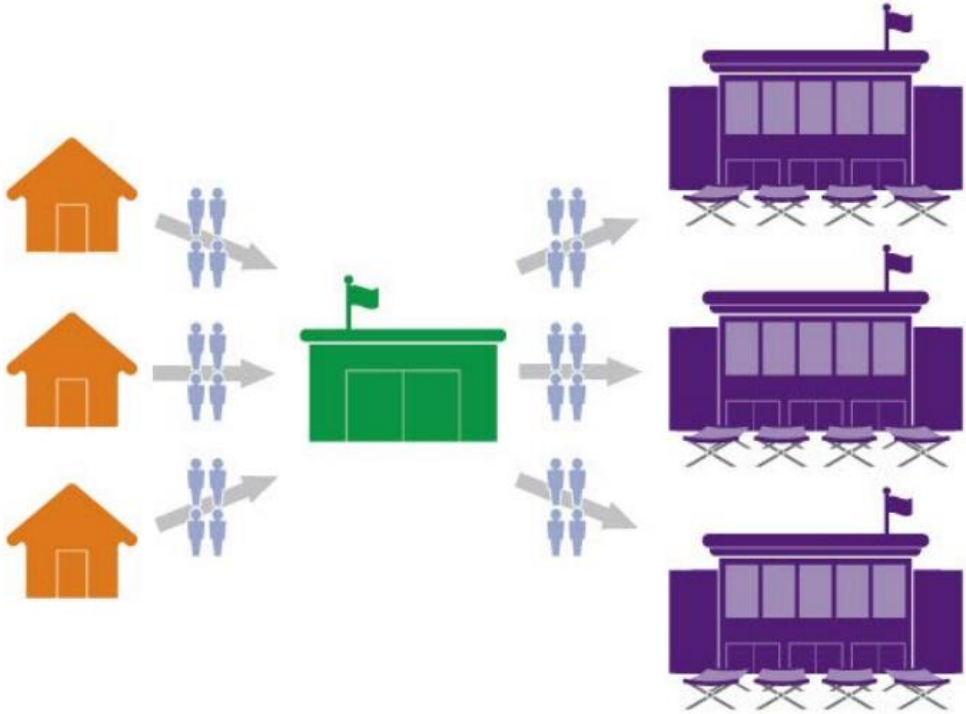


Zones

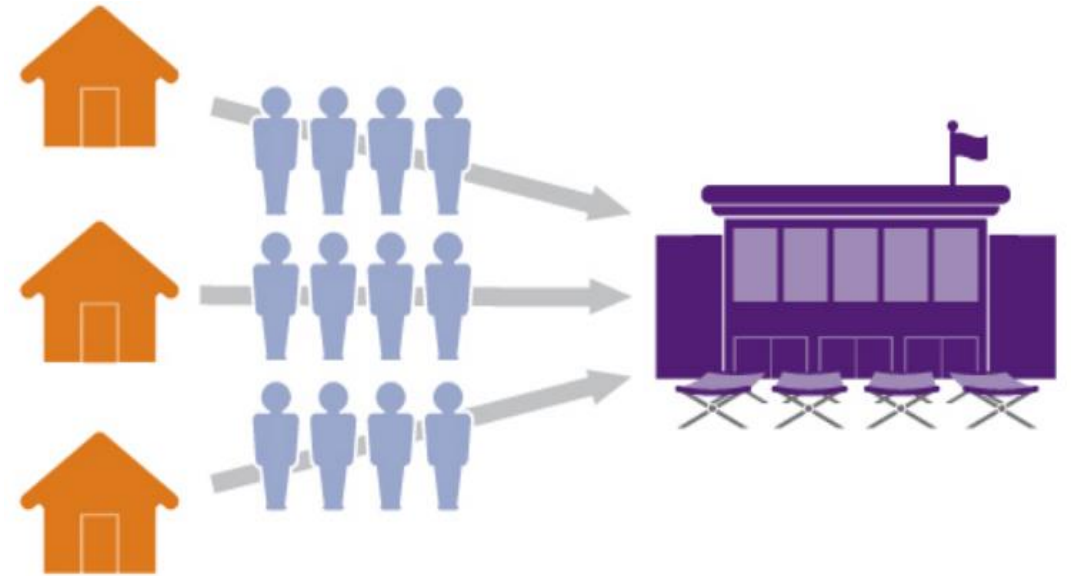
- Zone-based evacuation plans
- Reduce resource burdens
- Facilitate re-entry
- Accelerate the transition to recovery



Movement Models



Hub and Spoke



Point-to-Point



Where am I
going?

- Evacuation Assembly Point
- Temporary Evacuation Point
- Evacuation Center
- Shelter
- Family or Friends

Temporary Refuge Areas are not an acceptable option unless you are a trained professional.

Re-Entry & Repopulation

- Re-Entry Decision - The decision of when to permit residents to return to the affected area will be **made cooperatively**.
- Considerations: Access, essential emergency services, water levels, wildfire perimeter/containment, public health, subsistence, utilities.
- Phased
 - “**Closed**”, usually includes emergency operations, such as search and rescue and restoration of critical services such as electricity. Debris removal; Damage assessments.
 - “**Limited**,” authorizes access to residents, businesses, and disaster relief workers.
 - “**Open**”, allows access to the disaster area with few restrictions.





Closing Comments & Questions

