

Exhibit E

This page intentionally left blank.

PLANT LIST

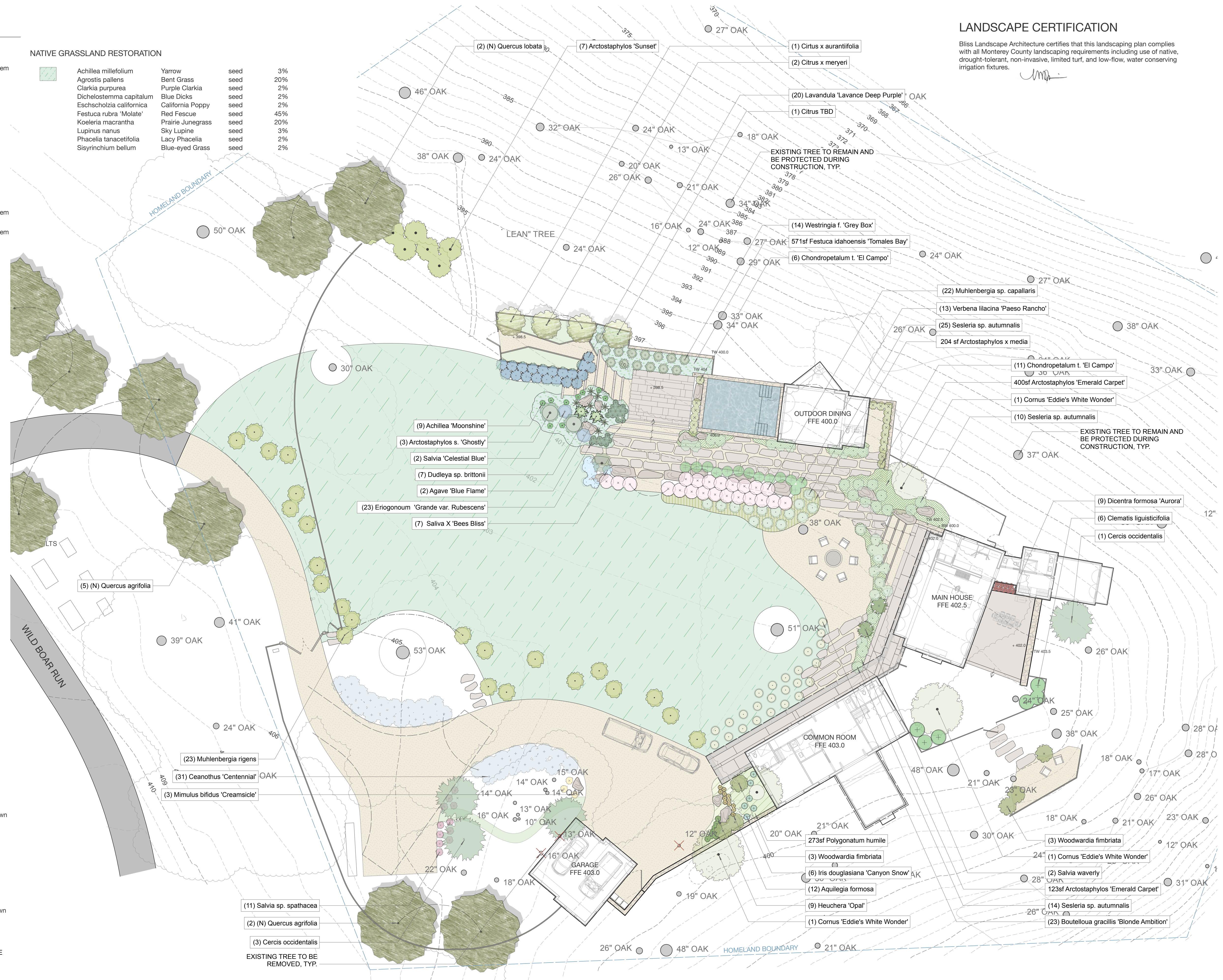
Symbol	Quantity	Botanical Name	Common Name	Container Size	Notes
TREES					
	4	<i>Cercis occidentalis</i>	Western Redbud	24" box	Multi-stem
	1	<i>Citrus x aurantiifolia</i>	Mexican Lime	15 gal	
	2	<i>Citrus x merieri</i>	Myers Improved Lemon	15 gal	
	1	<i>Citrus</i>			
	4	<i>Cornus 'Eddie's White Wonder'</i>	Eddie's White Wonder Dogwood	24" box	
	7	<i>Quercus agrifolia</i>	Coast Live Oak	36" box	Multi-stem
	2	<i>Quercus lobata</i>	Valley Oak	36" box	Multi-stem
GROUNDCOVERS + GRASSES					
	9	<i>Achillea 'Moonshine'</i>	Moonshine Achillea	1 gal	6" o.c.
	12	<i>Aquilegia formosa</i>	Western Columbine	4" pots	6" o.c.
	31	<i>Ceanothus 'Centennial'</i>	Centennial Ceanothus	1 gal	5" o.c.
	23	<i>Bouteloua gracilis 'Blonde Ambition'</i>	Blue Gamma Grass	1 gal	30" o.c.
	9	<i>Dicentra formosa 'Aurora'</i>	Fern-Leaf Bleeding Heart	1 gal	30" o.c.
	7	<i>Dudleya sp. brittonii</i>	Giant Chalk Dudleya	1 gal	6" o.c.
	23	<i>Eriogonum grande var. rubescens</i>	Red-flowered Buckwheat	1 gal	30" o.c.
	9	<i>Heuchera 'Opal'</i>	Opal Corral bells	1 gal	12" o.c.
	6	<i>Iris X 'Canyon Snow'</i>	Canyon Snow Iris	1 gal	24" o.c.
	3	<i>Mimulus bifidus 'Creamsicle'</i>	Creamsicle Monkey Flower	1 gal	24" o.c.
	22	<i>Muhlenbergia sp. capillaris</i>	Pink Muhly Grass	1 gal	4" o.c.
	23	<i>Muhlenbergia rigens</i>	Deer Grass	1 gal	24" o.c.
	11	<i>Salvia sp. spathaea</i>	Hummingbird Sage	1 gal	12" o.c.
	49	<i>Sesleria sp. autumnalis</i>	Autumn Moor Grass	1 gal	12" o.c.
	13	<i>Verbena lilacina 'Paseo Rancho'</i>	Paseo Rancho Cedros Island Verbena	1 gal	36" o.c.
GROUNDCOVER					
	523 sf	<i>Arctostaphylos 'Emerald Carpet'</i>	Emerald Carpet Manzanita	5 gal	4" o.c.
	204 sf	<i>Arctostaphylos X media</i>	Point Arena Manzanita	1 gal	4" o.c.
	571 sf	<i>Festuca idahoensis 'Tomaes Bay'</i>	Idaho Fescue	1 gal	8" o.c.
	273 sf	<i>Polygonatum humile</i>	Dwarf False Solomon's Seal	1 gal	12" o.c.
SRUBS					
	2	<i>Agave 'Blue Flame'</i>	Blue Flame Agave	5 gal	4" o.c.
	7	<i>Arctostaphylos 'Sunset'</i>	Sunset Manzanita	5 gal	6" o.c.
	3	<i>Arctostaphylos s. 'Ghostly'</i>	Ghostly Manzanita	5 gal	6" o.c.
	17	<i>Chondropetalum t. 'El Campo'</i>	Dwarf Cape Rush	5 gal	4" o.c.
	20	<i>Lavandula a. 'Lavance Deep Purple'</i>	Lavance Deep Purple Lavender	1 gal	20" o.c.
	2	<i>Salvia 'Celestial Blue'</i>	Celestial Blue Sage	5 gal	4" o.c.
	7	<i>Salvia X 'Bee's Bliss'</i>	Bee's Bliss Sage	1 gal	6" o.c.
	2	<i>Salvia waverly</i>	Waverly Sage	1 gal	As Shown
	14	<i>Westringia fruticosa 'greybox'</i>	Coast Rosemary	1 gal	5" o.c.
	6	<i>Woodwardia fimbriata</i>	Giant Chain Fern	5 gal	6" o.c.
VINES					
	6	<i>Clematis ligusticifolia</i>	Western White Clematis	1 gal	As shown

NATIVE GRASSLAND RESTORATION

	<i>Achillea millefolium</i>	Yarrow	seed	3%
	<i>Agrostis pallens</i>	Bent Grass	seed	20%
	<i>Clarkia purpurea</i>	Purple Clarkia	seed	2%
	<i>Dichelostemma capitatum</i>	Blue Dicks	seed	2%
	<i>Eschscholzia californica</i>	California Poppy	seed	2%
	<i>Festuca rubra 'Molate'</i>	Red Fescue	seed	45%
	<i>Koeleria macrantha</i>	Prairie Junegrass	seed	20%
	<i>Lupinus nanus</i>	Sky Lupine	seed	3%
	<i>Phacelia tanacetifolia</i>	Lacy Phacelia	seed	2%
	<i>Sisyrinchium bellum</i>	Blue-eyed Grass	seed	2%

LANDSCAPE CERTIFICATION

Bliss Landscape Architecture certifies that this landscaping plan complies with all Monterey County landscaping requirements including use of native, drought-tolerant, non-invasive, limited turf, and low-flow, water conserving irrigation fixtures.



OPENLAND PLANTINGS:
 ALL PLANTINGS IN THE OPENLANDS SHALL BE COORDINATED WITH THE SANTA LUCIA CONSERVANCY FOR LOCATION, QUANTITY AND SIZE. PLANTINGS SHALL MIMIC THE SITE'S OAK SAVANNA HABITAT WITH INFORMAL GROUPINGS OF NATIVE SHRUBS AND TREES. PLANT LAYOUT SHALL ADDRESS SCREENING CONCERNS FROM ADJACENT. ALL PLANTINGS SHALL RECEIVE TEMPORARY IRRIGATION FOR AN ESTABLISHMENT PERIOD NOT TO EXCEED 3 YEARS.

This page intentionally left blank