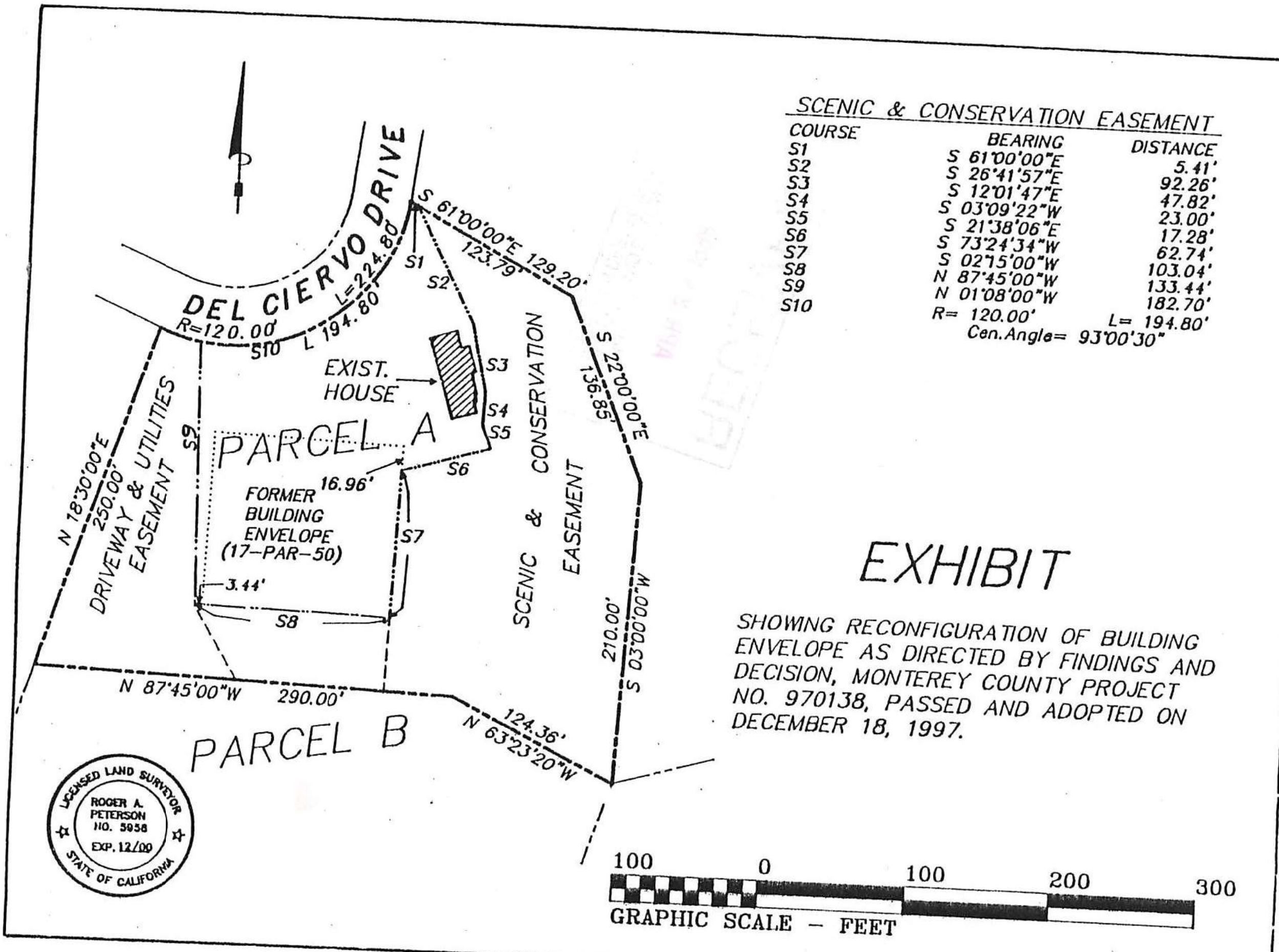


# Exhibit F

This page intentionally left blank.

END OF DOCUMENT

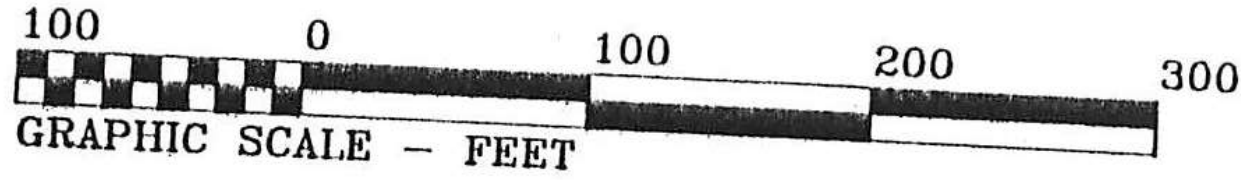
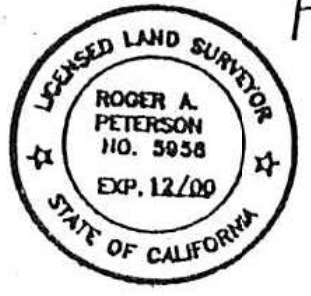


SCENIC & CONSERVATION EASEMENT

COURSE	BEARING	DISTANCE
S1	S 61°00'00"E	5.41'
S2	S 26°41'57"E	92.26'
S3	S 12°01'47"E	47.82'
S4	S 03°09'22"W	23.00'
S5	S 21°38'06"E	17.28'
S6	S 73°24'34"W	62.74'
S7	S 02°15'00"W	103.04'
S8	N 87°45'00"W	133.44'
S9	N 01°08'00"W	182.70'
S10	R= 120.00' L= 194.80'	
		Cent. Angle= 93°00'30"

EXHIBIT

SHOWING RECONFIGURATION OF BUILDING ENVELOPE AS DIRECTED BY FINDINGS AND DECISION, MONTEREY COUNTY PROJECT NO. 970138, PASSED AND ADOPTED ON DECEMBER 18, 1997.



This page intentionally left blank