

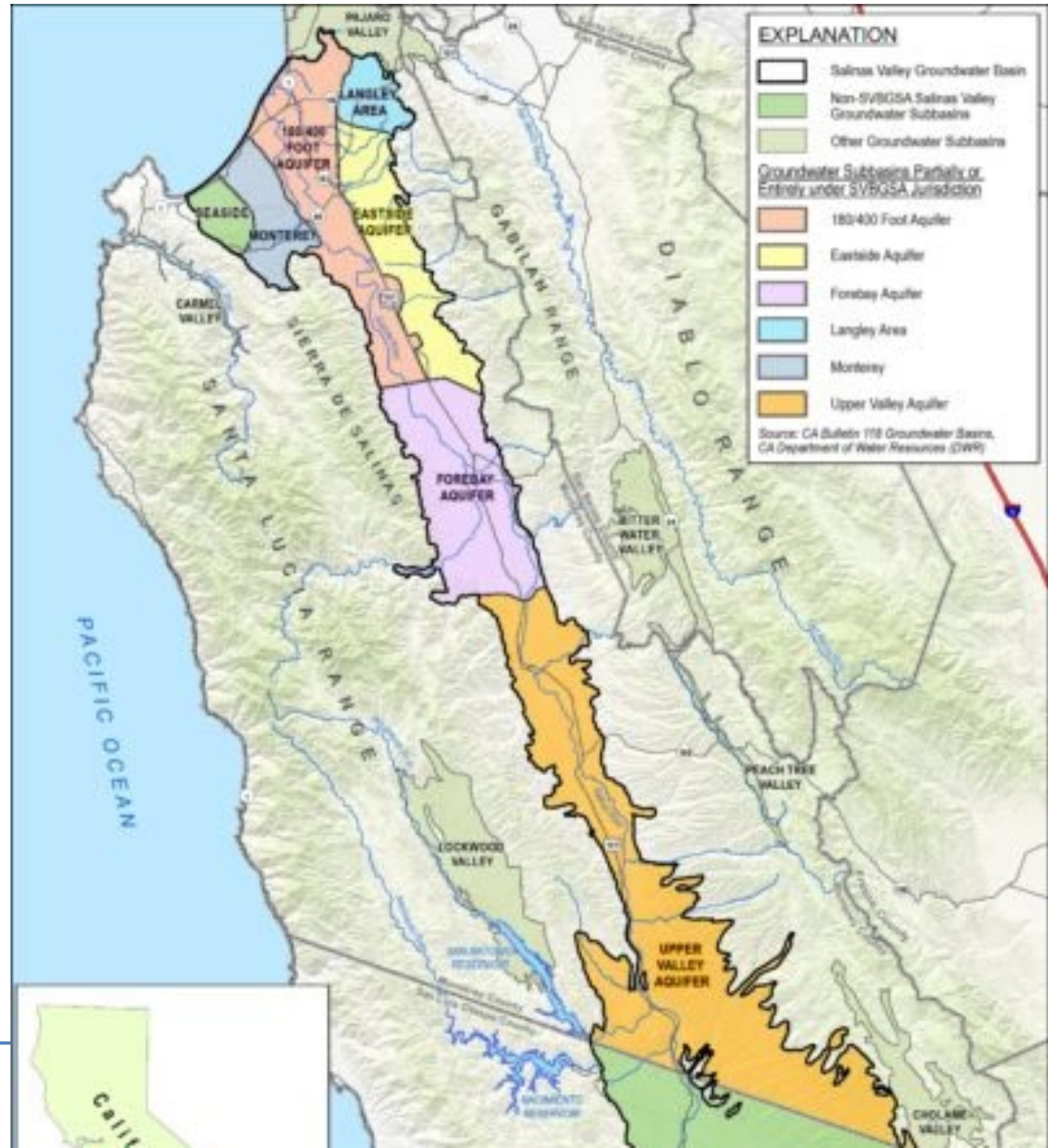


Today's Discussion At A Glance

- The Salinas Valley Groundwater Basin;
- The Agency's groundwater monitoring history;
- SGMA and the new regulatory paradigm;
- WRA Groundwater Monitoring Regulatory Program;
- GEMS Expansion Update;
- “Bringing it all Together”
 - The intersection of GEMS Expansion and establishment of the WRA Groundwater Monitoring Regulatory Program;
- Next Steps.

Salinas Valley Groundwater Basin

- Extends throughout the Salinas Valley from the San Luis Obispo County line to northwestern Monterey County.



WRA Groundwater Monitoring

- The Water Resources Agency began groundwater monitoring in the 1940's.
- Groundwater monitoring today includes:
 - Groundwater level monitoring and mapping throughout the SVB – 1940's;
 - Water Quality and seawater intrusion mapping in the 180/400 subbasin – 1960's;
 - Well Registration and Groundwater Extraction Monitoring System (GEMS) – 1990's;
 - Ag & Urban Water Conservation Reporting – 1990's;
 - Collaboration with GSA's – 2010's and beyond.

Sustainable Groundwater Management Act

- SGMA is really three state acts signed into law in 2014.
- SGMA mandates:
 - Groundwater sustainability by 2040 or 2042;
 - The Department of Water Resources:
 - Establish and prioritize groundwater basins (5);
 - Approve plans and monitor progress;
 - Determine sustainability
 - Formation of GSAs (6) in lieu of county or state control;
 - Development of Groundwater Sustainability Plans;
 - **Monitoring of groundwater level, quality, and usage.**

Groundwater Monitoring Regulatory Program

- Establishes one cohesive monitoring program to support today's regulatorily driven monitoring requirements;
- Leverages ~75 years of Agency expertise;
- Advances WRA Strategic Planning Goals:
 - Goal B: Planning & New Project Strategies 2, 5, & 7
 - Goal C: Financial Sustainability Strategies 2 & 6
 - Goal D: Core Services Strategies 1, 2, 3, & 5
- Supports the Salinas Valley Basin GSA's efforts;
- Creates opportunity to consolidate monitoring efforts under one entity;

Groundwater Monitoring Regulatory Program

- Currently focused on consolidating and expanding current monitoring efforts within the SVB;
- Could be utilized to support other groundwater management efforts:
 - Environmental Health
 - Regional Water Quality Control Board
 - GSAs outside of the Salinas Valley Basin
- Proposes to repeal 3 existing well registration & extraction monitoring ordinances and adopting 1 new ordinance;
- Proposes establishing a Prop 26 Regulatory Fee per well.
- Proposes to support SVB GEMS Expansion request.

GEMS Expansion Update

- The Agency and the Salinas Valley Basin GSA continue collaborating to meet regulatory requirements under the Sustainable Groundwater Management Act.
- The Agency and SVB continue stakeholder outreach on “GEMS Expansion” that began in the fall 2023.
- The Agency has made past presentations to:
 - WRA Planning Committee
 - WRA Personnel & Administration Committee
 - WRA Board of Directors
 - WRA Board of Supervisors
 - SVBGSA Board of Directors
 - Various stakeholders

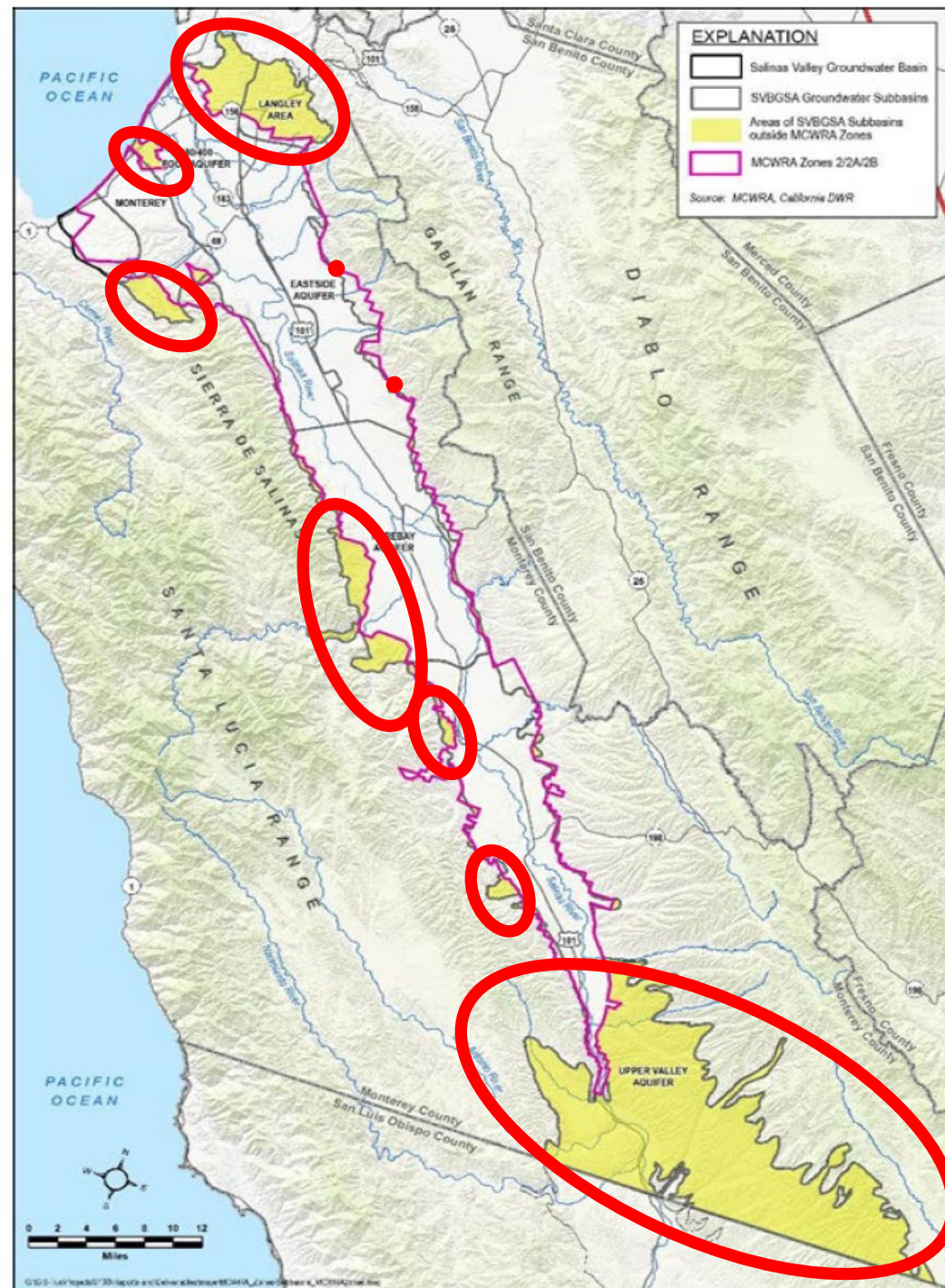
Why Expansion?

- Meets the regulatory data collection needs of SVB.
 - 5-year GSP evaluations due
 - 180-400 subbasin: January 2025
 - Other 5 subbasins: January 2027
- Helps address DWR's Recommended Corrective Actions.
- Aligns Agency GEMS boundaries and SVB boundaries.

Red Circles Are Outside of Current GEMS Program

Implementation Priorities 2024-2027

- ✓ 180-400 due to GSP 5-Year Evaluation deadline;
- ✓ Registration of unregistered wells;
- ✓ New extraction reporting in all areas to fill data gaps;
- ✓ Enhancements and other cooperative opportunities.



What changes are being planned?

▪ Well Registration:

- Currently in GEMS, wells with a discharge pipe smaller than 3 inches in diameter need not register.
- ***Under Expansion, all wells will need to register.***
- Known wells will not need to re-register.
- Any changes to wells, e.g. repair, modification, and destruction, will need to be reported.

What changes are being planned?

- **Extraction Reporting:**
 - Expansion of GEMS to include new reporting requirements in all areas under SVB jurisdiction.
 - Currently in GEMS, wells with a discharge pipe smaller than 3 inches in diameter need not report.
 - ***Under Expansion, all wells using more than 2 AFY will need to report, consistent with SGMA.***
- Enhancement of GEMS to improve the processes
 - Reporting timeframe and period
 - Protocols, devices, technology

In sum, “GEMS Expansion” is:

- To meet the regulatory needs of the SVB for data collection within their jurisdiction;
- Registration of wells not previously registered;
- New reporting requirements;
- Improved processes, greater efficiencies;
- Opportunity to meet the future needs of others.

Bringing it all Together

- The proposal is to repeal the 3 existing GEMS ordinances and adopt 1 new ordinance to:
 - Affirm the Agency’s authority to perform groundwater monitoring throughout the County;
 - Establish opportunity for other entities with groundwater regulatory responsibilities to request service from the Agency;
 - Establish a new regulatory fee to cover the Groundwater Monitoring Regulatory Program.

Bringing it all Together

- New approach to cost allocation and recovery.
 - Historically, Agency costs are predominately allocated and recovered on a per-acre basis.
 - Future GMRP costs are proposed to be allocated and recovered on a per-well basis (reporting requirements are driven by the number of wells, not the number of acres).

Bringing it all Together

- The Ordinance will affirm the Agency's general authority to monitor groundwater, provide opportunity to request service, and establish the regulatory fee.
- A Service Agreement will establish the terms and conditions for the Agency to provide groundwater monitoring service to a requesting entity.
- Task Orders will define the specific work and proposed cost of an entities request.
- Supervisors' approval of proposed Agency work, related costs, and a resultant regulatory fee will occur by Resolution at least annually.

Next Steps

- Working with County Counsel and the SVB, the Agency will continue stakeholder outreach to inform the new draft Ordinance .
 - Next iteration presented to Directors on July 15th.
- Working with the SVB, the Agency will seek to refine its specific requests for groundwater monitoring deliverables and methods.
- The Agency is developing its own manual for the Groundwater Monitoring Regulatory Program.
- The regulatory fee nexus study has begun.

GEMS Expansion Proposed Timeline

WELL REGISTRATION & GEMS EXPANSION TIMELINE															
Nov '23	Dec '23	Jan '24	Feb '24	Mar '24	Apr '24	May '24	Jun '24	Jul '24	Aug '24	Sep '24	Oct '24	Nov '24	Oct '25	Feb '26	Jan '27
OUTREACH															
			WELL REGISTRATION & GEMS EXPANSION PROPOSAL DEVELOPMENT												
					ORDINANCE, AGREEMENTS, & POLICIES DEVELOPMENT										
								POPULATE WELL REGISTRATION & GEMS EXPANSION DATABASE							
											COLLECT NEW WELL & GEMS DATA				
													REPORT NEW DATA		
															5-YR. GSPs UPDATE



