

Exhibit C

This page intentionally left blank.

NOTES:

LOTS SHOWN ON THIS PLAT ARE FROM THAT CERTAIN PLAT FILED FOR RECORD OCTOBER 3, 1927 IN THE OFFICE OF THE MONTEREY COUNTY RECORDER, IN VOLUME 3 OF "CITIES AND TOWNS" AT PAGE 46 AND AS ADJUSTED BY 30-SURV-69.

DIMENSIONS ARE APPROXIMATE ONLY.

ELEVATIONS ARE BASED ON AN ARBITRARILY ASSUMED DATUM AS NOTED.

THERE MAY BE OTHER EASEMENTS AFFECTING THIS PROPERTY NOT SHOWN HEREON.

GROUND MAY BE MORE IRREGULAR THAN CONTOURS INDICATE.

RW = ROCK WALLS

29"K = 29" OAK


14"B = 14" BAY

11"P = 11" PINE

NOT ALL TREES WERE LOCATED THIS SURVEY.

SEPTIC FEASIBILITY ENVELOPES SUMMARIZE THE POTENTIAL SEPTIC SYSTEMS DESIGNED BY GRICE ENGINEERING

JULY 2021 UPDATE IS FOR PROPOSED LOT CONFIGURATIONS ONLY. TOPOGRAPHIC INFORMATION NOT UPDATED.

 APPROXIMATE AREA WITH SLOPE OF 30% OR GREATER COMPUTER GENERATED, NOT FIELD CONFIRMED AT THIS TIME.

 Draft Septic Envelopes

60-FOOT LONG SEPTIC DRAIN FIELD. CLEAN-OUTS EACH END. (NOT SURVEYED. LOCATED BY OTHERS)

PROPOSED PARCEL "C"
40.4 ACRES +/-

PROPOSED PARCEL "B"
40.3 ACRES +/-

PROPOSED PARCEL "A"
52.6 ACRES +/-

PROPOSED PARCEL "B"
40.3 ACRES +/-

PROPOSED LOT LINE ADJUSTMENT MAP

OF A PORTION OF SECTIONS 5 & 6,
T.20 S., R.2 E., M.D.B.&M.,
MONTEREY COUNTY, CALIFORNIA

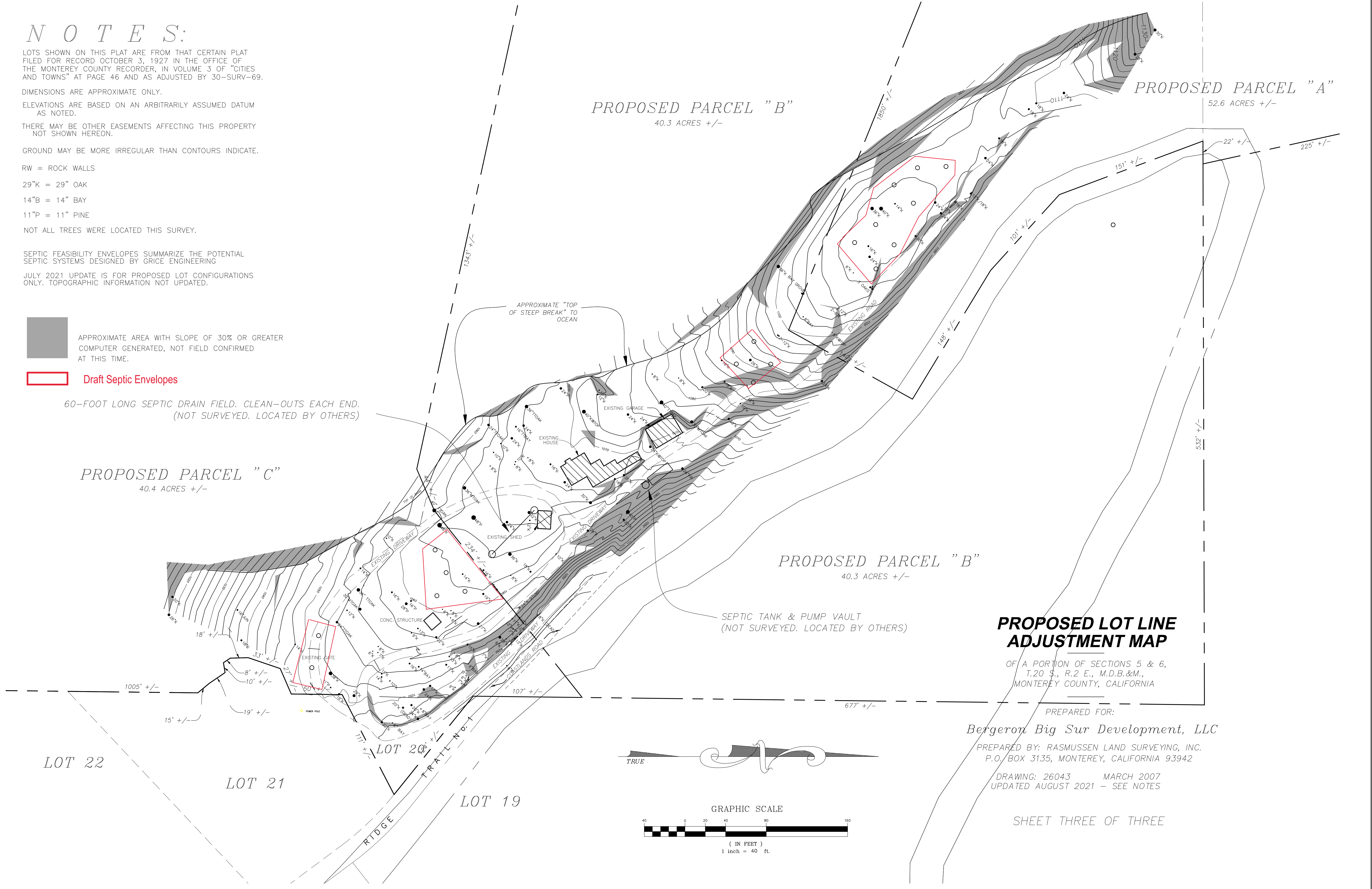
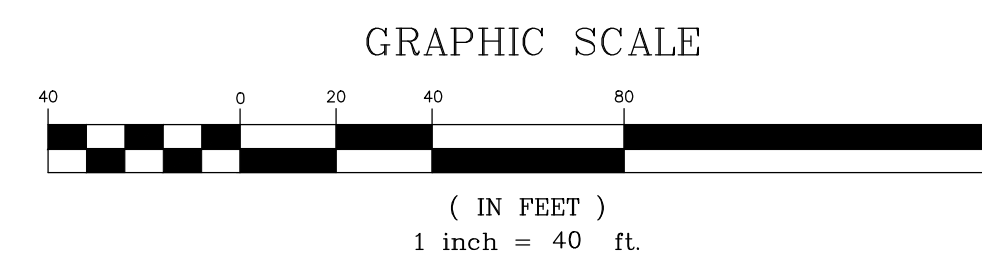
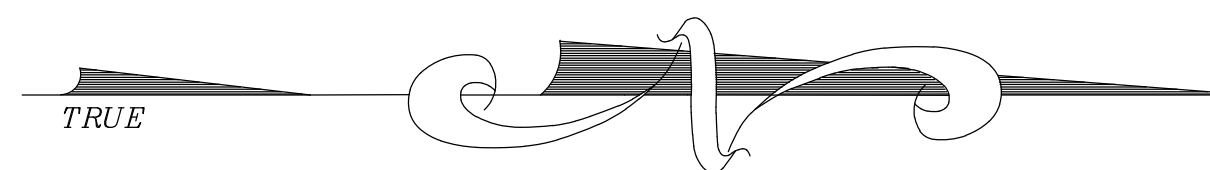
PREPARED FOR:

Bergeron Big Sur Development, LLC

PREPARED BY: RASMUSSEN LAND SURVEYING, INC.
P.O. BOX 3135, MONTEREY, CALIFORNIA 93942

DRAWING: 26043 MARCH 2007
UPDATED AUGUST 2021 - SEE NOTES

SHEET THREE OF THREE



This page intentionally left blank