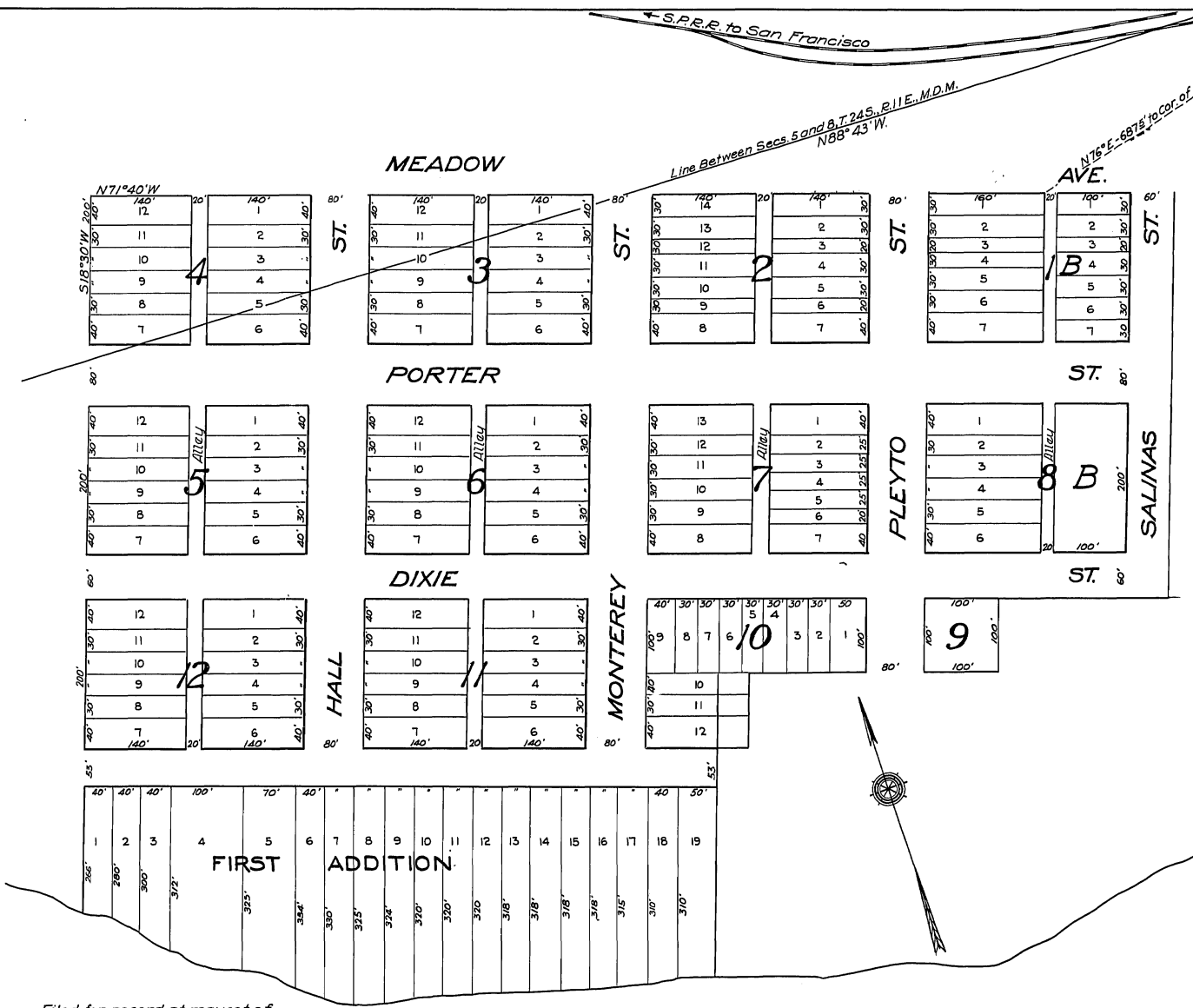


# Attachment B

# ATTACHMENT B



Copied from original map filed in Book No. 1, Page 15, Cities & Towns.

Filed for record at request of  
W.M.R. PARKER, October 17, 1890 at  
45 minutes past 10 A.M.  
DAVID WALLACE, Recorder.  
By M.C. HARRIS, Deputy.

Salinas River

MAP  
OF  
**BRADLEY**  
AND  
**FIRST ADDITION**  
**MONTEREY COUNTY, CAL.**  
SURVEYED BY F. RANSDALE, SEP. 1886  
RE-SURVEYED BY M.F. REILLY, SUR.  
SCALE 1 IN. = 100 FT.