



TODAY'S ACTION

Consider receiving an update on the Sustainable Groundwater Management Act (SGMA) process



BOD / BOS Actions

- October 2014 – County Counsel provided a report to the BOS regarding SGMA
- February 2015 – BOD / BOS received report on POP
- October 2015 – GSA facilitation contract
- November 2015 – Facilitation Funding Agreement



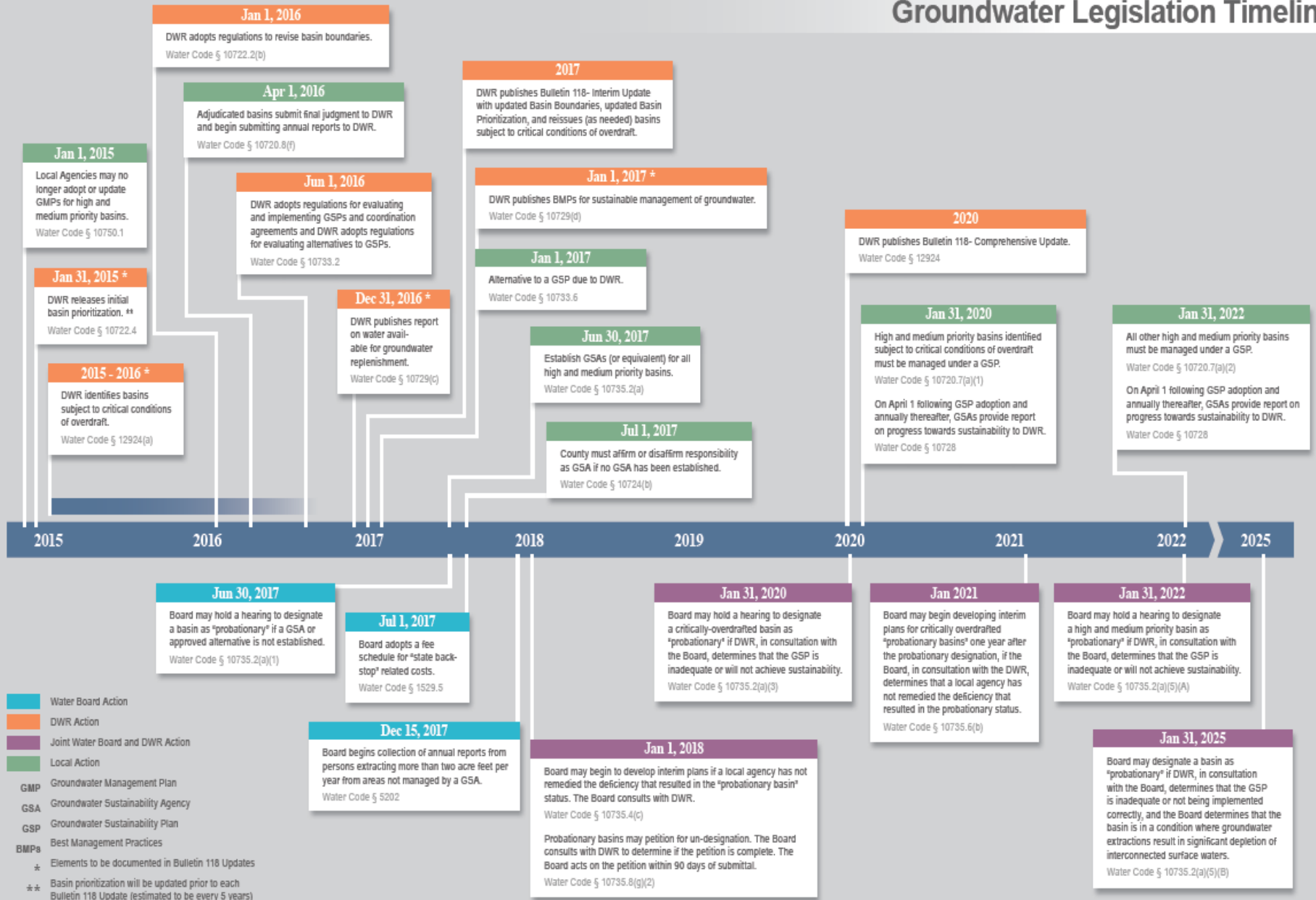
Financial Impact

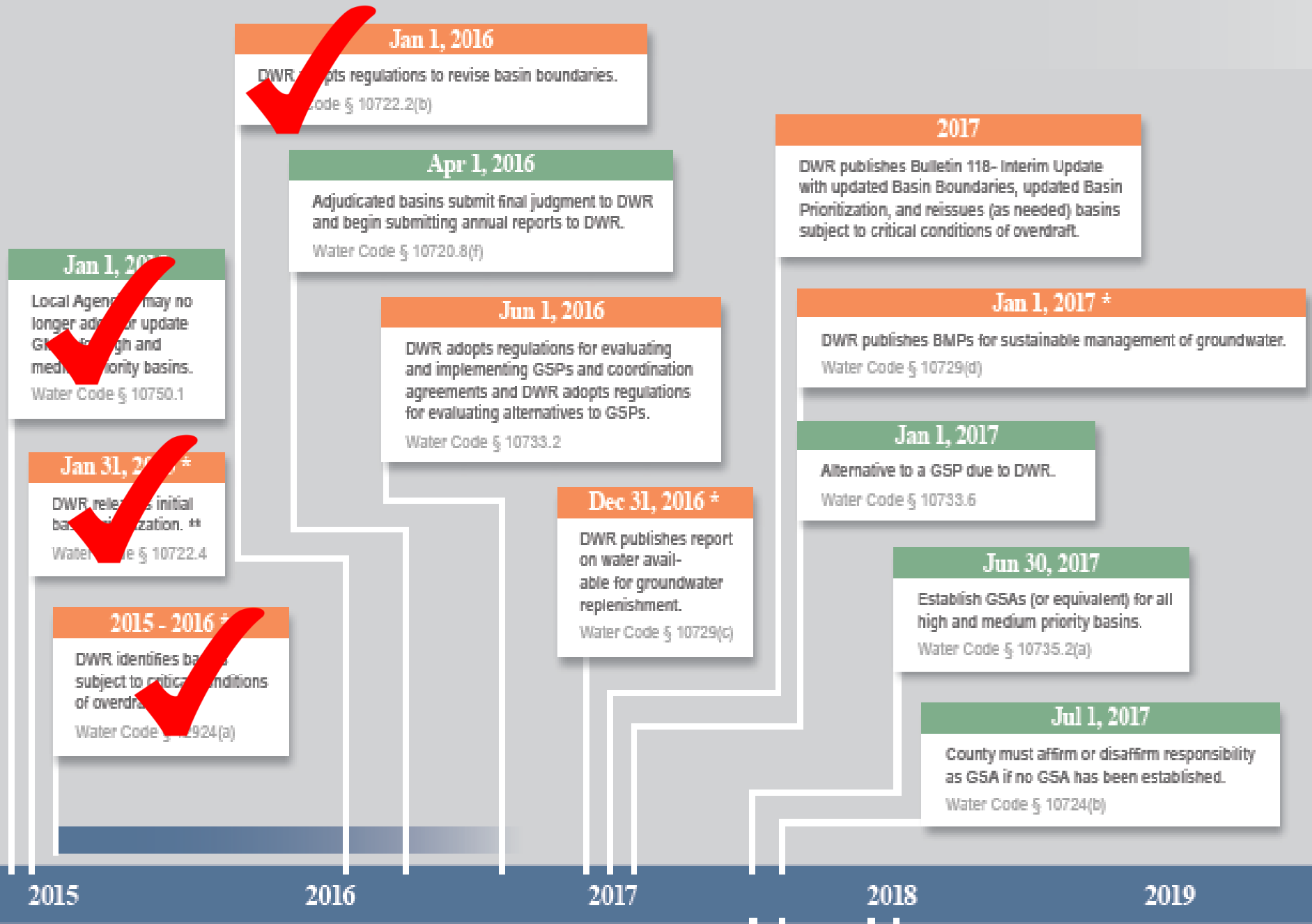
- None for receiving this update

Discussion

- SGMA passed in September 2014
- SGMA contains critical milestones:
 - Priority of basins
 - Refinement of basin boundaries
 - Formation of Groundwater Sustainability Agency
 - Development of Groundwater Sustainability Plan(s)
- Goal is basin sustainability within 20 years

Groundwater Legislation Timeline





Jan 1, 2015
 Local Agencies may no longer adopt or update GSPs for high and medium priority basins.
 Water Code § 10750.1

Jan 31, 2016 *
 DWR releases initial basin prioritization. **
 Water Code § 10722.4

2015 - 2016 *
 DWR identifies basins subject to critical conditions of overdraft.
 Water Code § 10724(a)

Jan 1, 2016
 DWR adopts regulations to revise basin boundaries.
 Water Code § 10722.2(b)

Apr 1, 2016
 Adjudicated basins submit final judgment to DWR and begin submitting annual reports to DWR.
 Water Code § 10720.8(f)

Jun 1, 2016
 DWR adopts regulations for evaluating and implementing GSPs and coordination agreements and DWR adopts regulations for evaluating alternatives to GSPs.
 Water Code § 10733.2

Dec 31, 2016 *
 DWR publishes report on water available for groundwater replenishment.
 Water Code § 10729(c)

2017
 DWR publishes Bulletin 118- Interim Update with updated Basin Boundaries, updated Basin Prioritization, and reissues (as needed) basins subject to critical conditions of overdraft.

Jan 1, 2017 *
 DWR publishes BMPs for sustainable management of groundwater.
 Water Code § 10729(d)

Jan 1, 2017
 Alternative to a GSP due to DWR.
 Water Code § 10733.6

Jun 30, 2017
 Establish GSAs (or equivalent) for all high and medium priority basins.
 Water Code § 10735.2(a)

Jul 1, 2017
 County must affirm or disaffirm responsibility as GSA if no GSA has been established.
 Water Code § 10724(b)

2015

2016

2017

2018

2019

Discussion (cont.)

- BOD directed Agency to be the GSA for Salinas Valley
- BOS directed Staff to develop a public outreach program
- Initial outreach meetings began in January 2015
 - Three meetings were completed in January
- Other entities requested a ‘facilitated approach’
- Consortium (facilitator selection group) formed:
 - County / WRA / Cities of SV (represented by Salinas) / Agriculture (Farm Bureau / Grower-Shipper / SVWC)

Discussion (cont.)

- Facilitator has been selected
- Interviews with selected stakeholders completed
- First GSA formation workshop – January 21, 2016
 - Monterey Room, MC Government Center 2nd Floor
 - Time: 4:00pm – 6:00pm
- Brief look at some of the information presented...

+ Better negotiations.
Better decision making.
Better results.



Salinas Valley Groundwater Stakeholder Issue Assessment

Gina Bartlett & Bennett Brooks, Senior Mediators

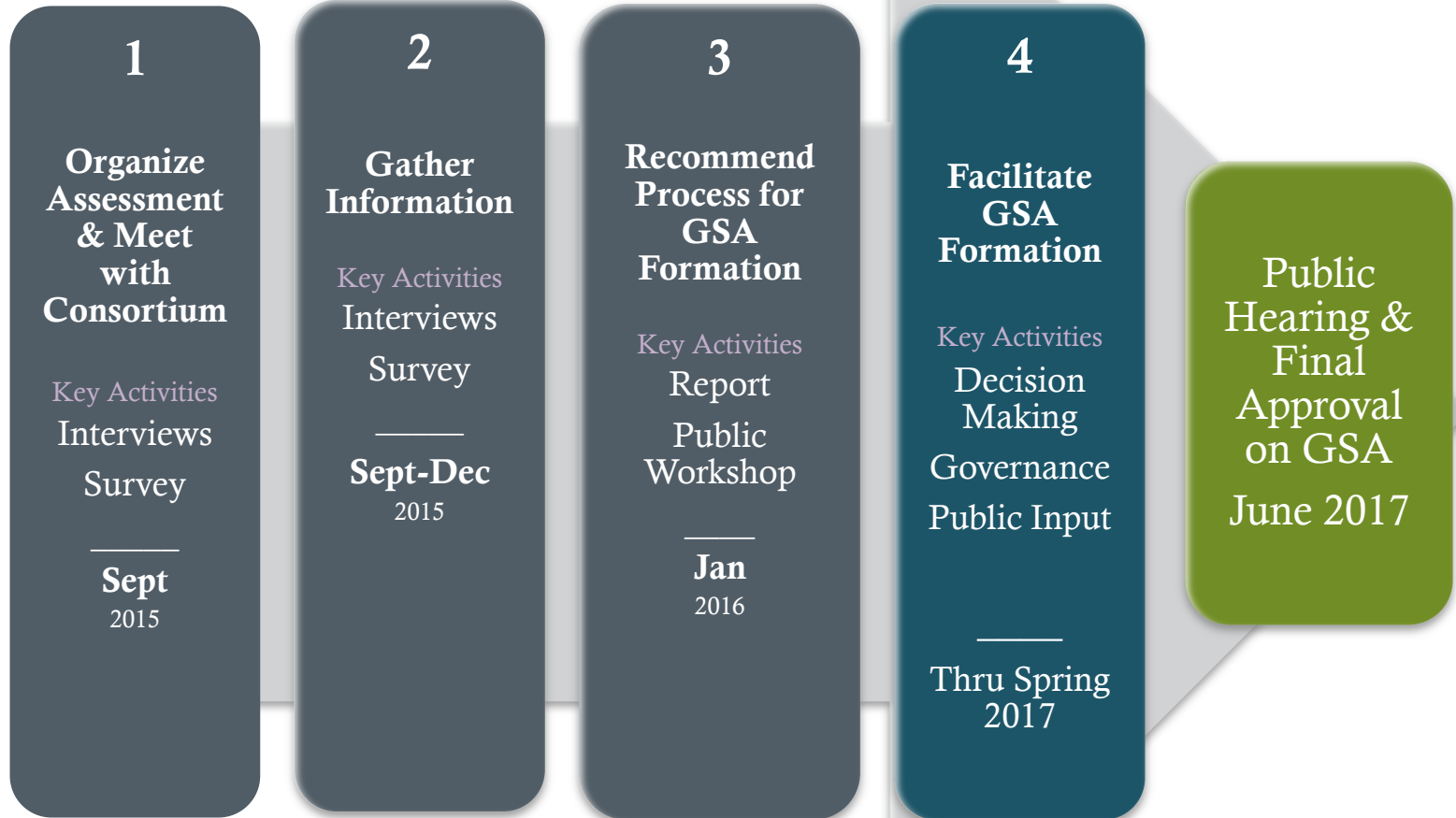
Jan 21, 2016



CBI Role

- Provide **impartial facilitation services** in support of forming a groundwater sustainability agency under the Sustainable Groundwater Management Act
- Selected by a consortium of interests; now working with the broader stakeholder community

Approach





GSA Formation

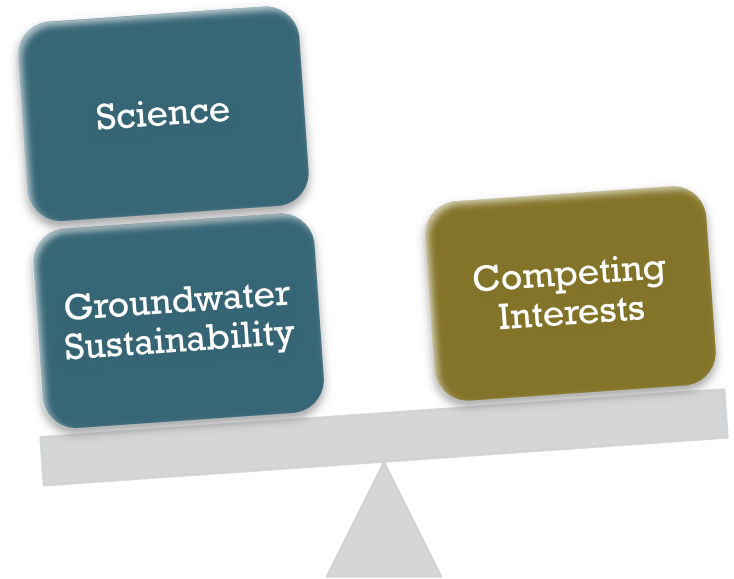
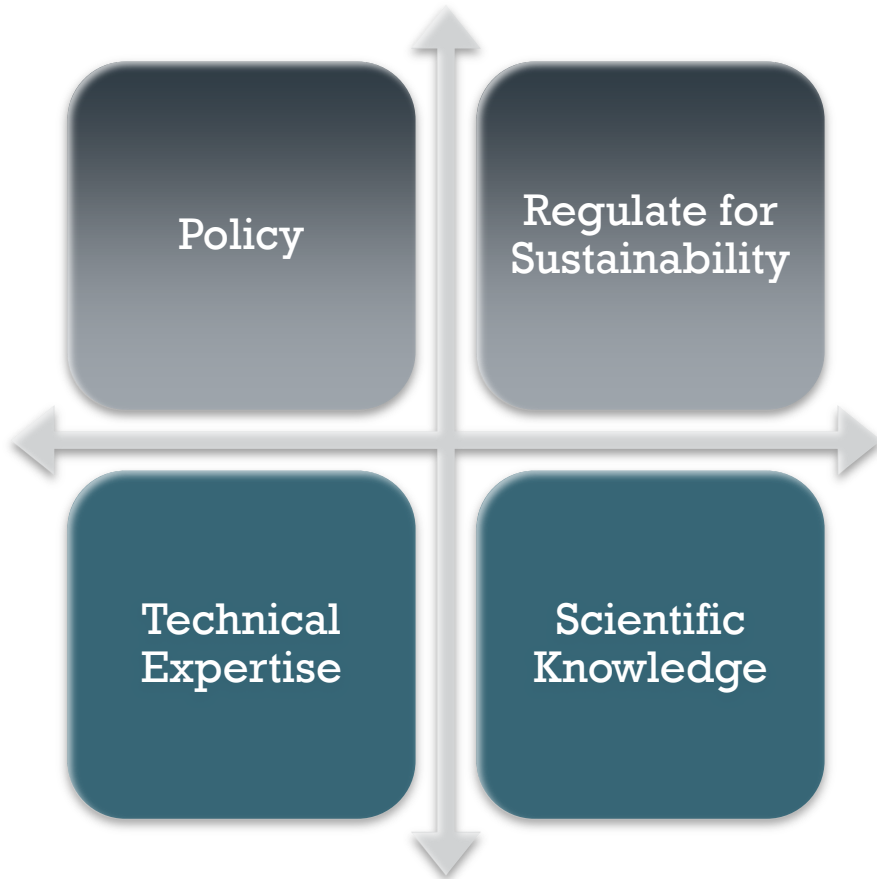
Findings

- Groundwater supply is **high stakes**
- Forming GSA **successfully is critical**; it's in everyone's collective interest to develop a workable and collaborative approach
- **No clear candidate** exists for the GSA
- **Manage size** of body

“We need an entity that has knowledge to be the GSA and trust of all the interested parties, and the technical expertise to develop the plan.”

+ GSA Considerations

Findings





Governance & Decision Making

Findings

- **Balance** in decision-making
- Represent **major interests**
- **Agriculture** is primary economic driver, needs “meaningful” voice in governance
- **Interdependence** between cities / urban and agriculture
 - Cities provide housing and services; ag provides jobs
 - Concentrate development to preserve Ag land
- AVOID Ag vs. Urban

Represent Major Interests

~

Agriculture

Cities

County

Community Interests

Environmental

Rural Residential Well Owners

Water Suppliers

+ CBI Recommendations

Process to form a groundwater sustainability agency

Create a Transparent, Inclusive Collaborative Process



Convene a Groundwater Stakeholder Forum and Collaborative Work Group



Confirm Decision-Making



Develop Work Plan to Meet State Deadline

+

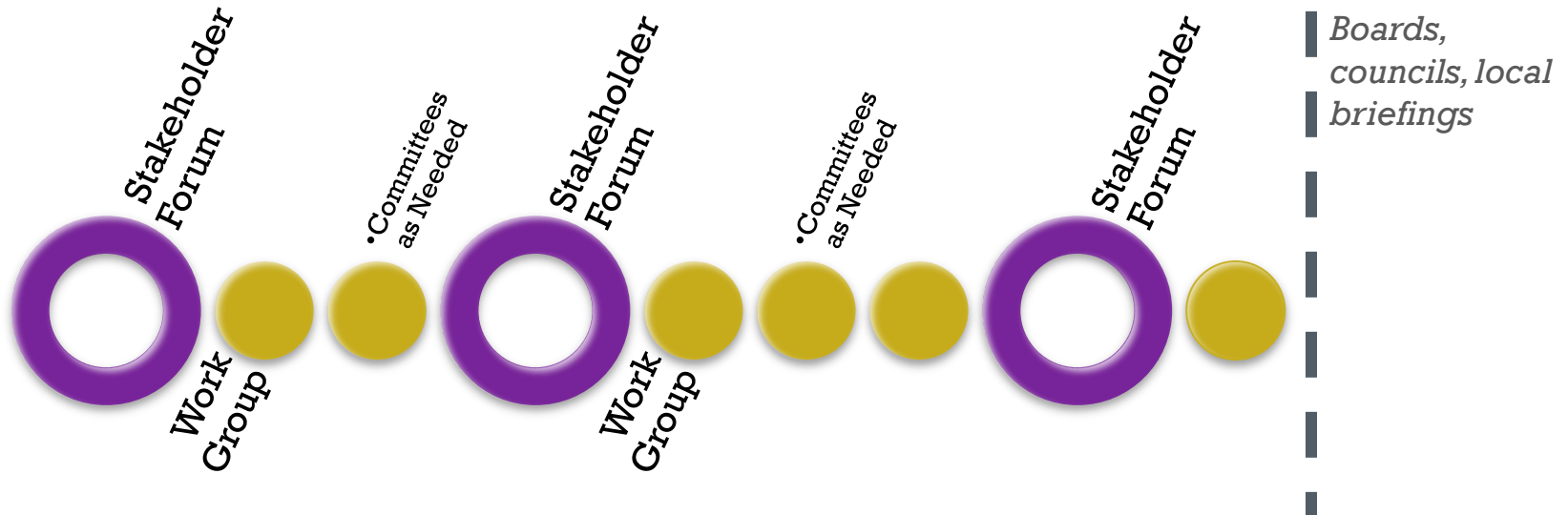
Recommended Dialogue Structure





Meetings!

Stakeholder Forum, Work Group and Committees



Committees when needed

- Engagement to develop outreach materials
- Technical to figure out gw sustainability plan (due 2020)

Key Elements

- ✓ Use people's time wisely
- ✓ Ongoing work punctuated by public input
- ✓ Create widespread support and understanding



Decision-Making Roadmap

Jan-Feb 2016

- **Organization:**
- Confirm Process Design & Stakeholder Participation
- Develop Work Plan
- Organize Committees

Feb-April

- **Information Gathering & Understanding:**
- SGMA Requirements & Governance Options
- Current Basin Understanding
- Basin Boundaries (Applications due to DWR between Jan-March 2016)
- Stakeholder Interests

March-Oct

- **GSA Formation Proposal Development**
- **Public Engagement Plan and Activities**

Oct-Nov

- **GSA Formation Vetting Process**

Dec-Mar 2017

- **GSA Formation Proposal Refinement and Legal Documentation**

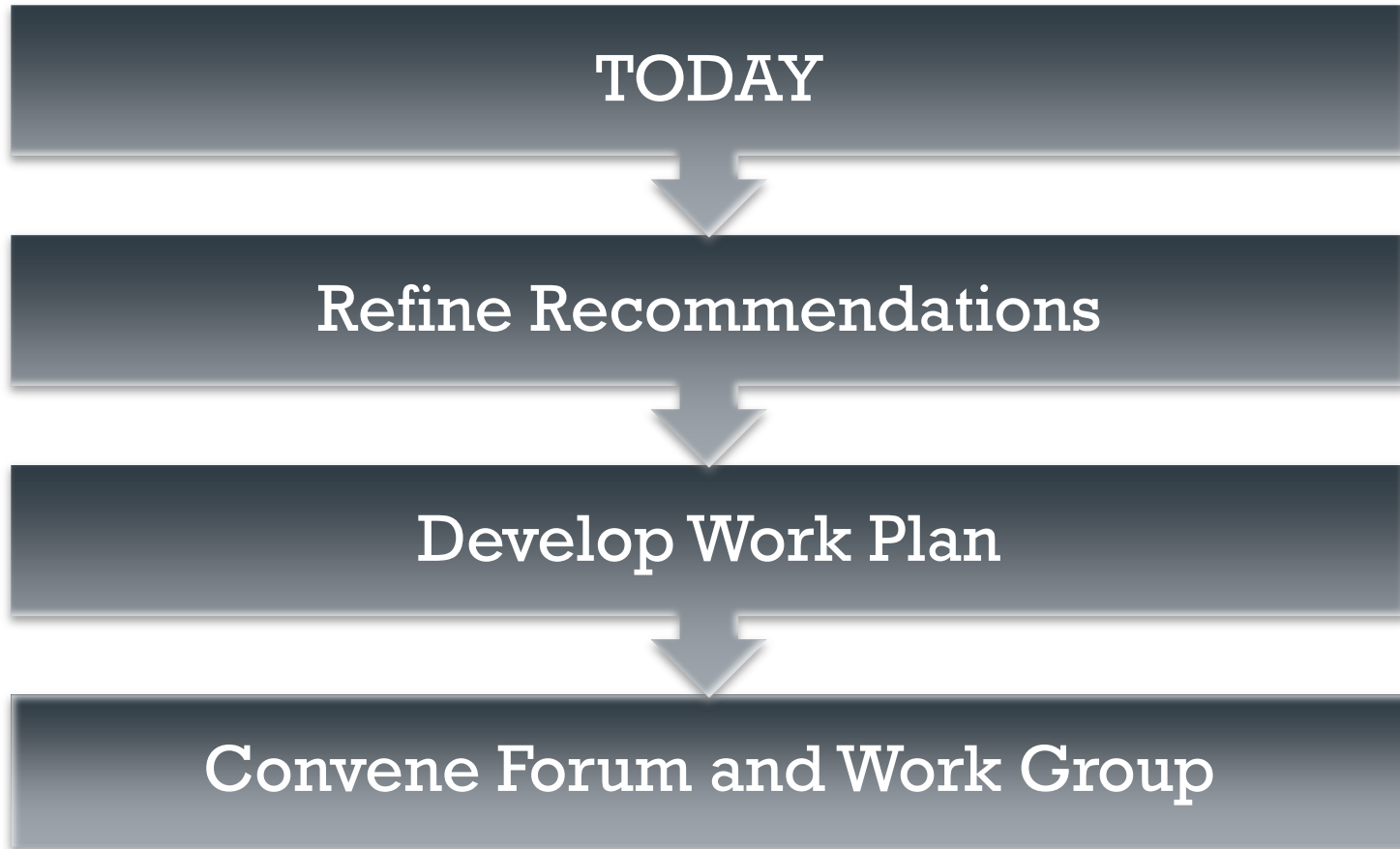
March 2017

- **Public Notice & Hearing**

+

Next Steps

Recommendations



Discussion (cont.)

- Agency staff has been:
 - Providing updates to BOD and BOS
 - Participating in State webinars regarding SGMA
 - Working with neighboring basin entities on boundaries
 - Boundary changes are to be in writing by end of March 2016
 - Paso Robles Basin
 - Pajaro Basin
 - Seaside Basin

Discussion (cont.)

- Requests for basin boundary modifications
 - First opportunity: deadline of March 31, 2016
 - DWR to publish final boundaries in early 2017.
- Subsequent opportunity for basin boundary modifications in 2018

Discussion (cont.)

- County/Agency exploring modifications to boundaries of three groundwater basins or subbasins in Monterey County
- Salinas Valley Groundwater Basin
 - Seaside Area subbasin
 - Paso Robles Area subbasin
- Pajaro Valley Groundwater Basin

Discussion (cont.)

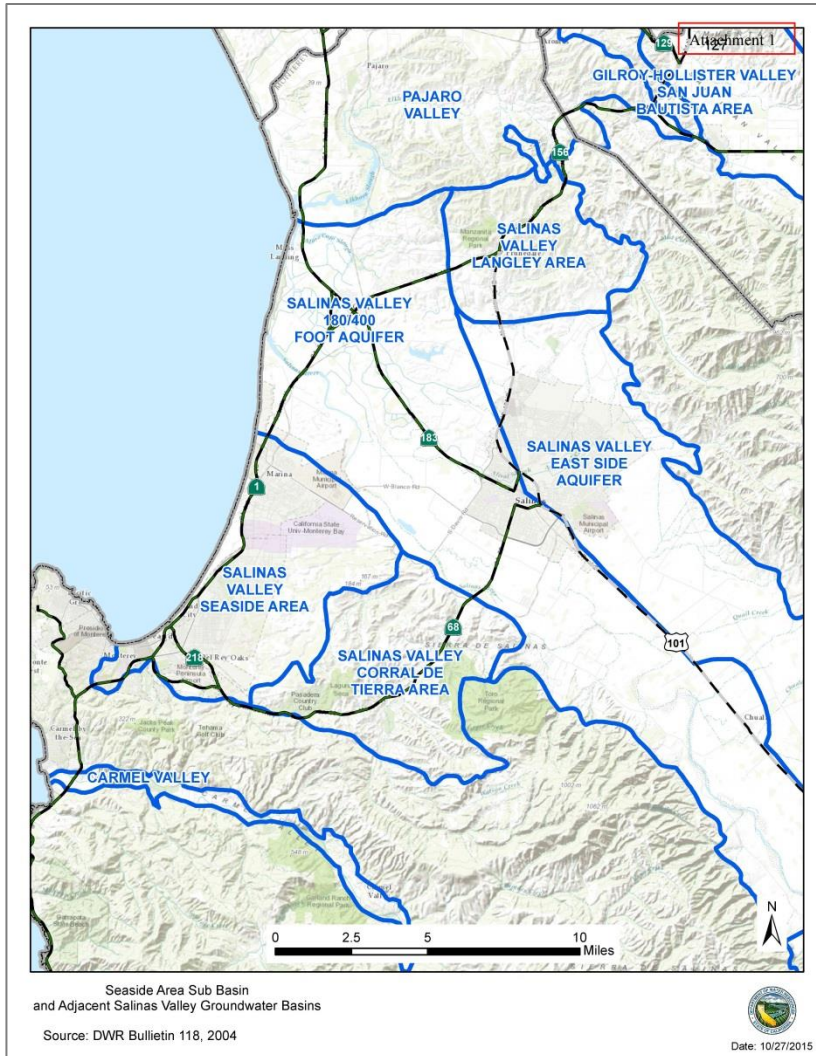
- Seaside Area
 - Subbasin of Salinas Valley Groundwater Basin
- Monterey Peninsula Water Management District (MPWMD) pursuing modification to recognize adjudicated portion of Seaside subbasin as a distinct groundwater basin.
 - MPWMD Board Resolution 2016-01 (January 27, 2016)

Discussion (cont.)

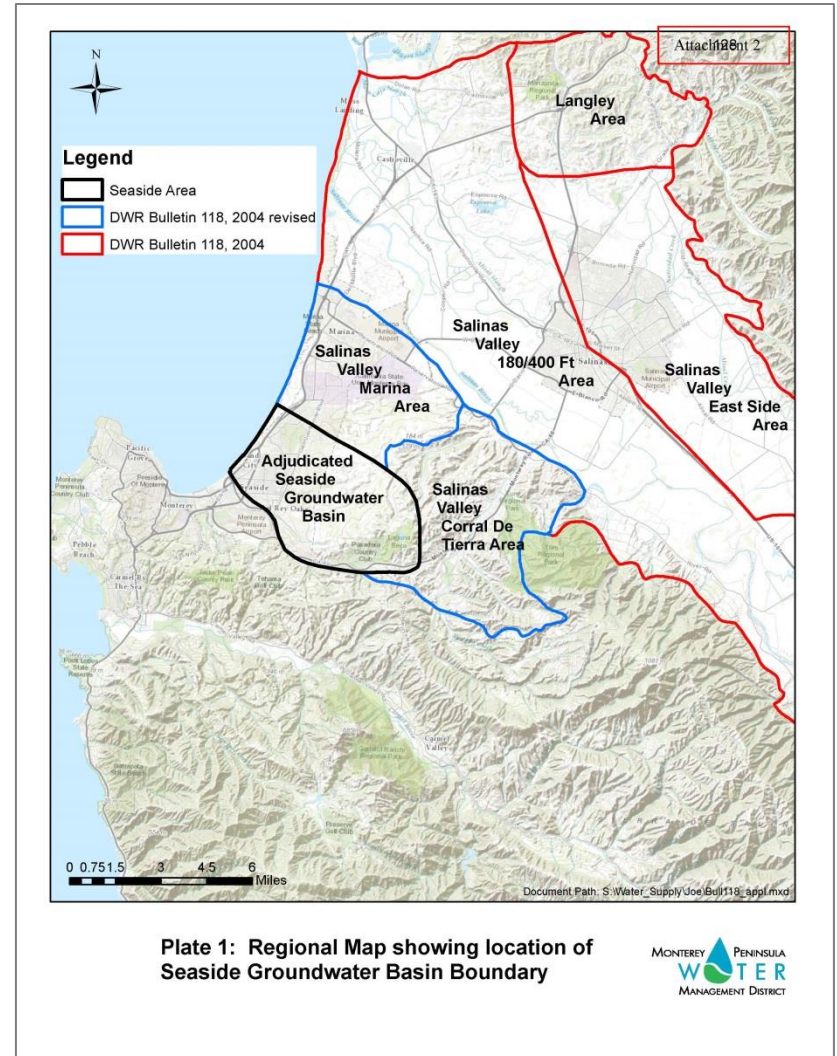
- Existing Seaside Area subbasin will be subdivided
- Two new basins/subbasins formed
 - Adjudicated Seaside Groundwater Basin
 - Marina Area subbasin of Salinas Valley GW Basin
- Boundary of existing Corral de Tierra Area subbasin will be adjusted

Discussion (cont.)

Existing Basin Boundaries



Proposed Basin Boundary Modification



Discussion (cont.)

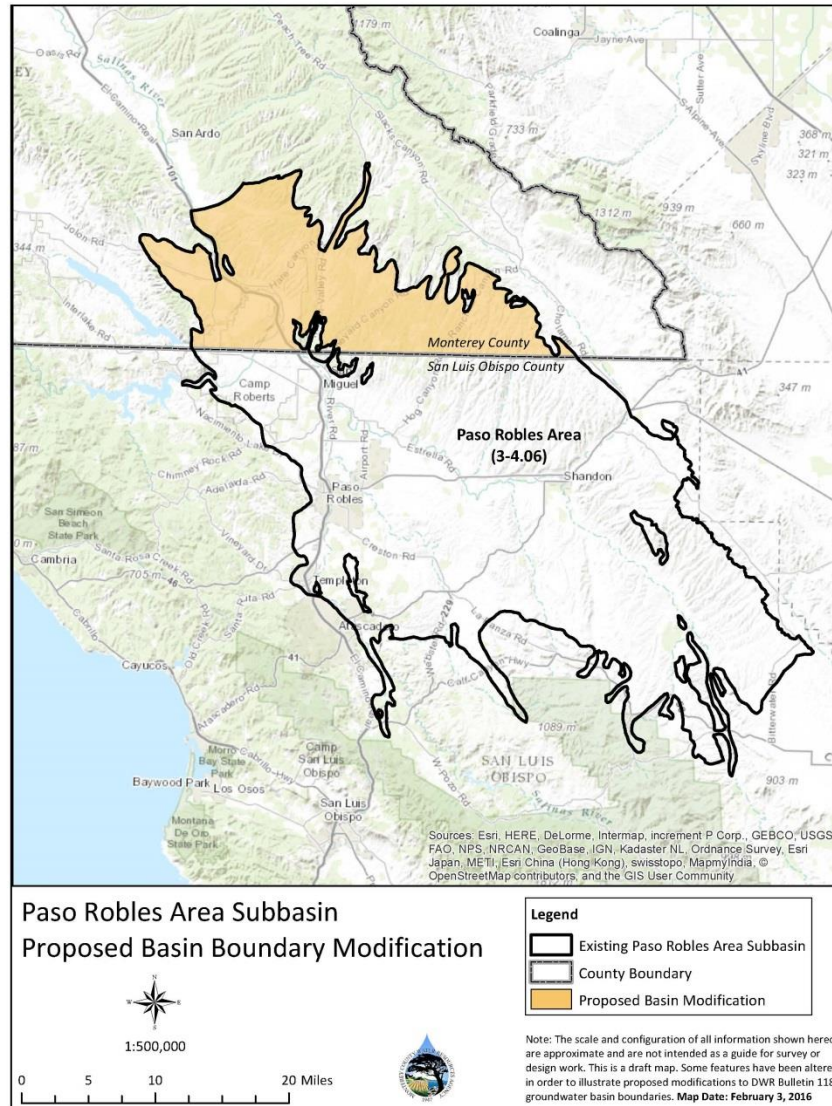
- Seaside Watermaster is the default GSA for the Adjudicated Seaside Groundwater Basin
- Marina Area subbasin would most likely be managed by the GSA for the Salinas Valley Groundwater Basin that is currently being created through a ‘facilitated process’



Discussion (cont.)

- Paso Robles Area
 - Subbasin of Salinas Valley Groundwater Basin
- Existing subbasin overlies both Monterey and San Luis Obispo counties
- County/Agency considering subdivision of basin at the County line

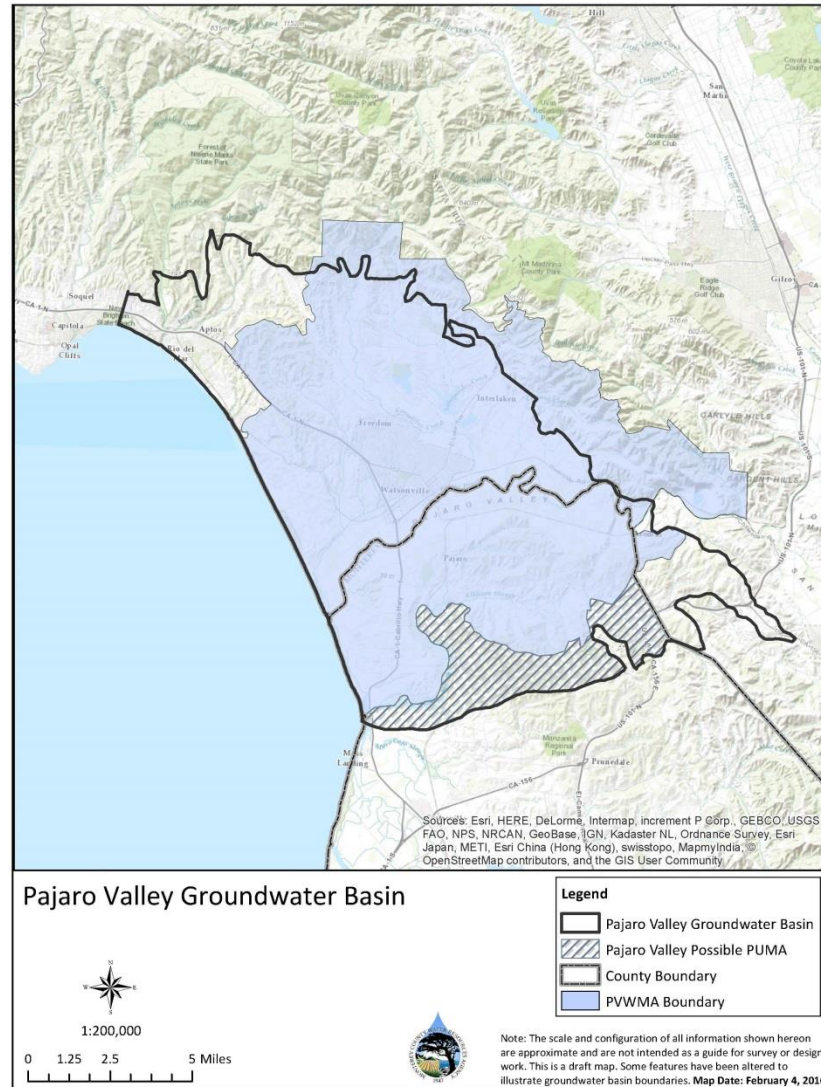
Discussion (cont.)



Discussion (cont.)

- Pajaro Valley Groundwater Basin
 - Overlies counties of Monterey, Santa Cruz, and San Benito
- Pajaro Valley Water Management Agency (PVWMA) is GSA for areas of the basin within their jurisdictional boundary
- Portions of Pajaro Valley GW Basin in Monterey County lie outside PVWMA area.

Discussion (cont.)



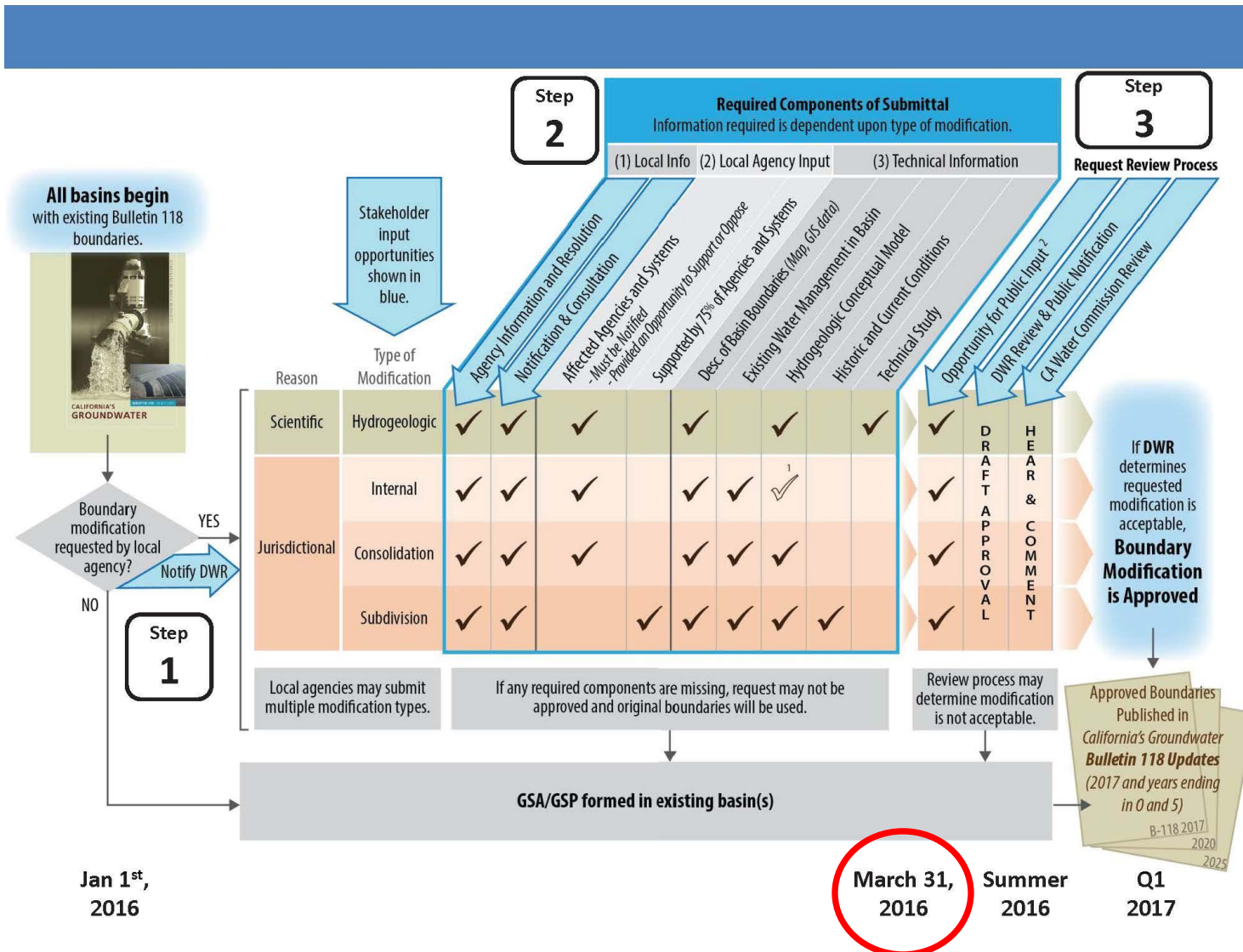
Discussion (cont.)

- Options for portion of Pajaro Valley Groundwater Basin in Monterey County that lies outside area covered by PVWMA
 - Modify basin boundary; include new basin in management of GSA for Salinas Valley Basin
 - Allow area to become a Potentially Unmanaged Area (PUMA)

Discussion (cont.)

- Next steps
 - Submit an “Initial Notification of Potential Basin Boundary Modification Request” to DWR
 - Coordinate with local agencies in affected basins
 - BOD/BOS Resolution initiating the modification request
 - Submit request(s) to DWR by March 31, 2016

Discussion (cont.)





Summary

- SGMA timelines are moving forward
- Basin boundary refinements are due soon
- Facilitated process moving forward
- Discussed proposed basin boundary modifications, will require coordination with other entities
- Staff will continue to keep up on State-provided information



TODAY'S ACTION

Receiving an update on the
Sustainable Groundwater Management
Act (SGMA) process

