



Shandon - San Juan Water District

Presentation to:

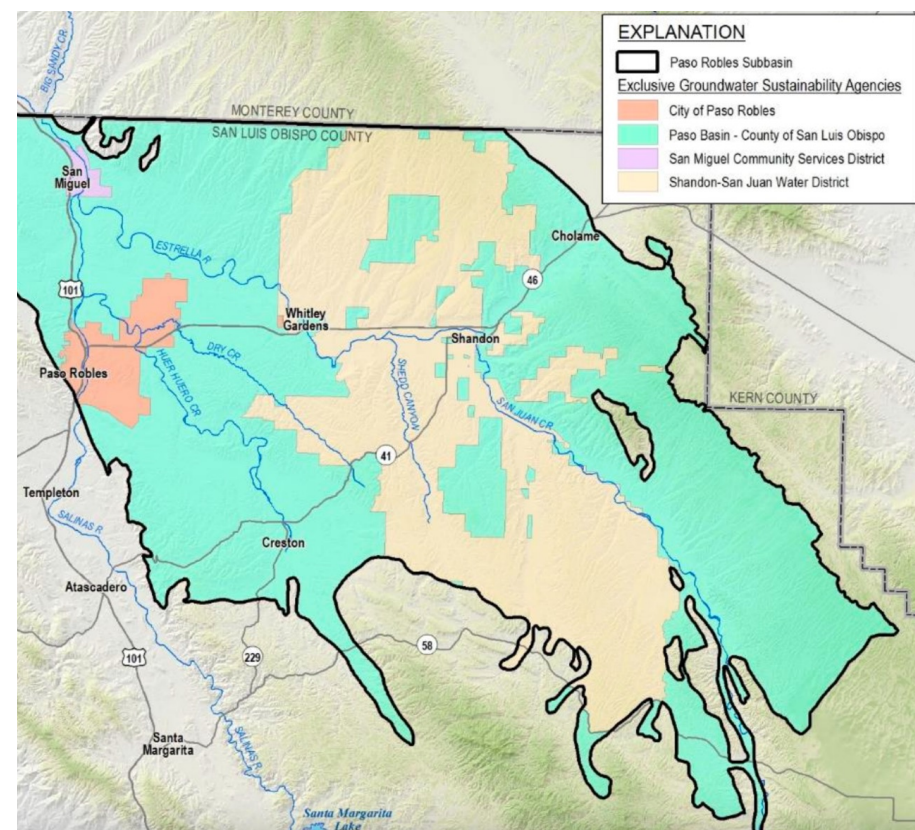
Monterey County – Water Resources Agency Board of Directors

Matt Turrentine & Steve Sinton

February 22, 2022

Shandon San Juan Water District (SSJWD)

- SSJWD is a California Water District
 - A **public agency** under the Calif Water Code §34,000 and a Groundwater Sustainability Agency under SGMA §10,720
 - Under SGMA our obligation is to make the Paso Robles Groundwater Basin a **sustainable resource for the future**



Source: Paso Basin GSP; Figure 2-1

Groundwater Sustainability

- Section 9.5 of our plan:

Nacimiento & Salinas River at Santa Margarita Dam are ***among the few systems currently having sufficiently reliable volumes of unused water to justify the expense of new infrastructure for supplementing water supplies to the Basin.***

Applications

Santa Margarita Lake

- Application # A033189
- 14,000 AF of flood flows
- Reflects projected maximum but average is closer to 4,000 AFY

Lake Nacimiento

- Application # A033190
- 2,000 AF of flood flows (avg 555 AF)
- 12,000 AF of unappropriated storage
- This matches the current pipeline capacity but not to excess water in wet years

If successful, these volumes will be used in the winter months to recharge the Paso Robles sub-basin

*Our intent is to be collaborative and creative
to the benefit of all parties and
only use water that is surplus to Monterey County's permits*

Collaboration & Ongoing Activities

- We wish to find an arrangement that is mutually beneficial and are willing to pay for our use of existing infrastructure
- Entirely possible we will be awarded a different volume than applied for, but every quantity of recharge we can bring to our sub-basin can help preserve our economy
- Attempting to be responsive to SWRCB requests on a more complete system
- Latest correspondence with SWRCB was January 2022, and we expect feedback in the next 2-4 months

Collaboration & Ongoing Activities

- We appreciate the opportunity to keep an open dialogue with this meeting and others going forward
- Our hydrogeologists have incorporated recent SkyTEM data into a 3D model; we'd be happy to share this technology if it will benefit your efforts in the Salinas Valley