

Attachment C

This page intentionally left blank.

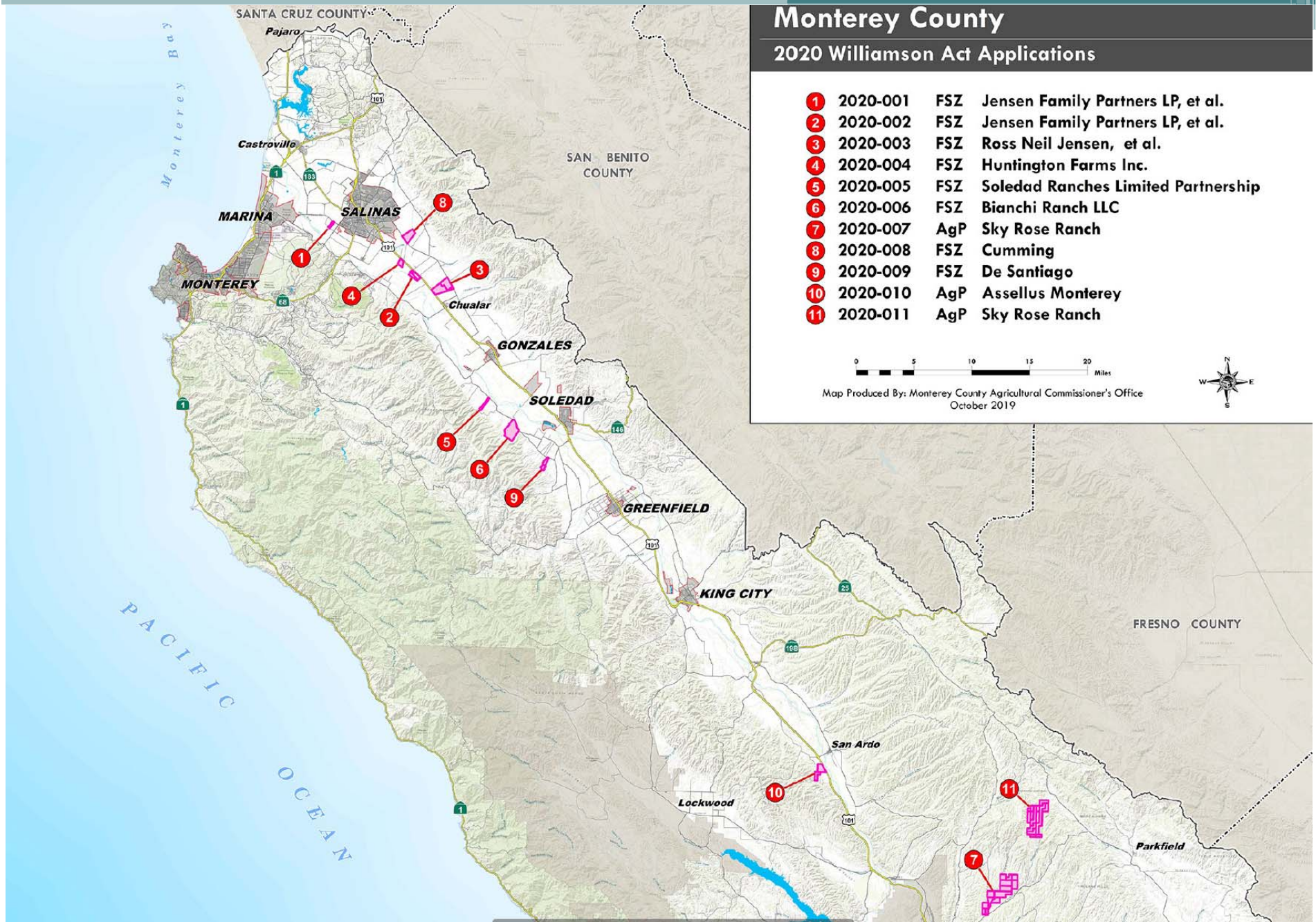
Monterey County

2020 Williamson Act Applications

- | | | | |
|----|----------|-----|-------------------------------------|
| 1 | 2020-001 | FSZ | Jensen Family Partners LP, et al. |
| 2 | 2020-002 | FSZ | Jensen Family Partners LP, et al. |
| 3 | 2020-003 | FSZ | Ross Neil Jensen, et al. |
| 4 | 2020-004 | FSZ | Huntington Farms Inc. |
| 5 | 2020-005 | FSZ | Soledad Ranches Limited Partnership |
| 6 | 2020-006 | FSZ | Bianchi Ranch LLC |
| 7 | 2020-007 | AgP | Sky Rose Ranch |
| 8 | 2020-008 | FSZ | Cumming |
| 9 | 2020-009 | FSZ | De Santiago |
| 10 | 2020-010 | AgP | Assellus Monterey |
| 11 | 2020-011 | AgP | Sky Rose Ranch |

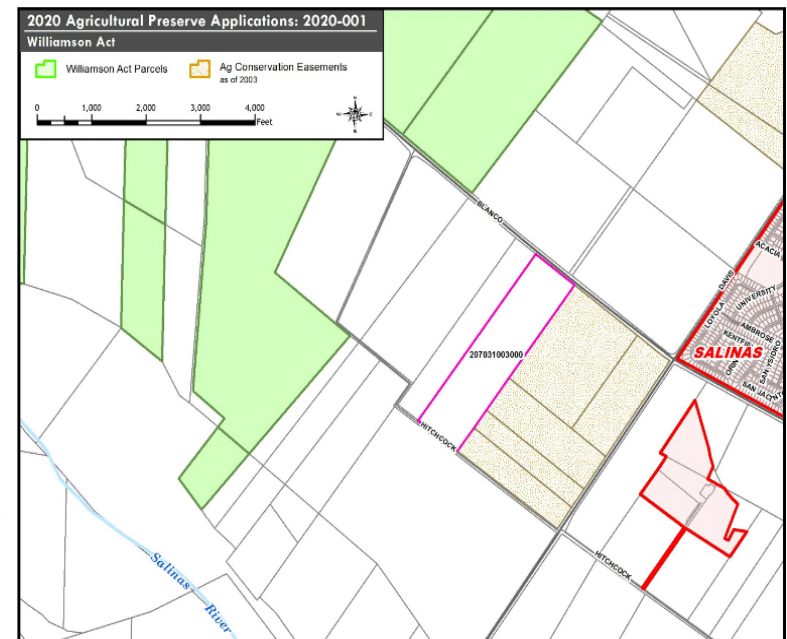
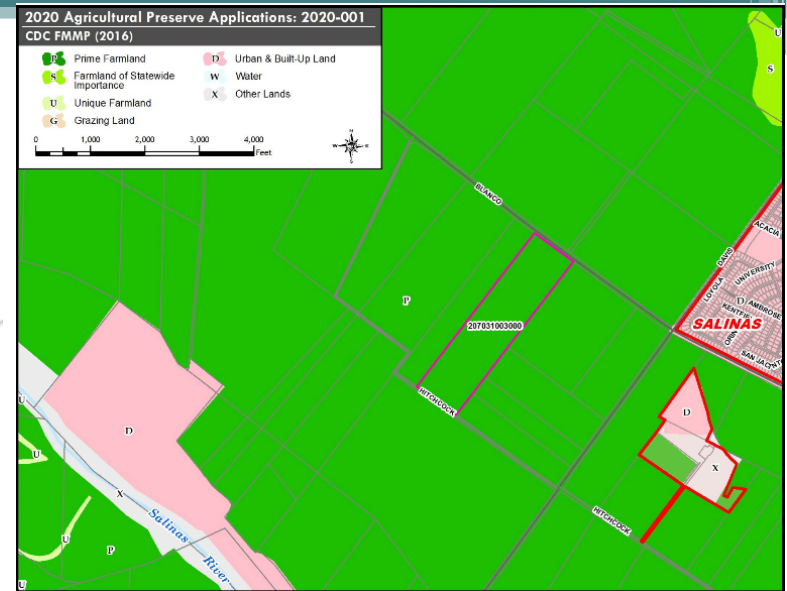
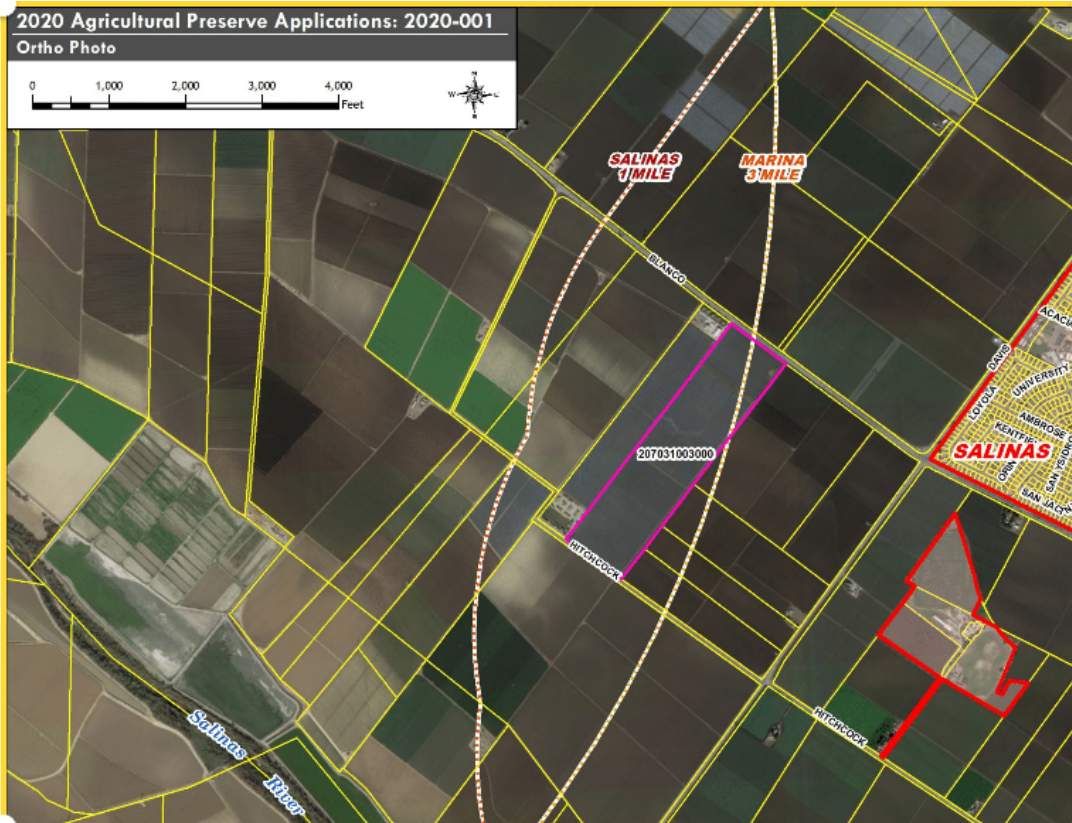


Map Produced By: Monterey County Agricultural Commissioner's Office
October 2019



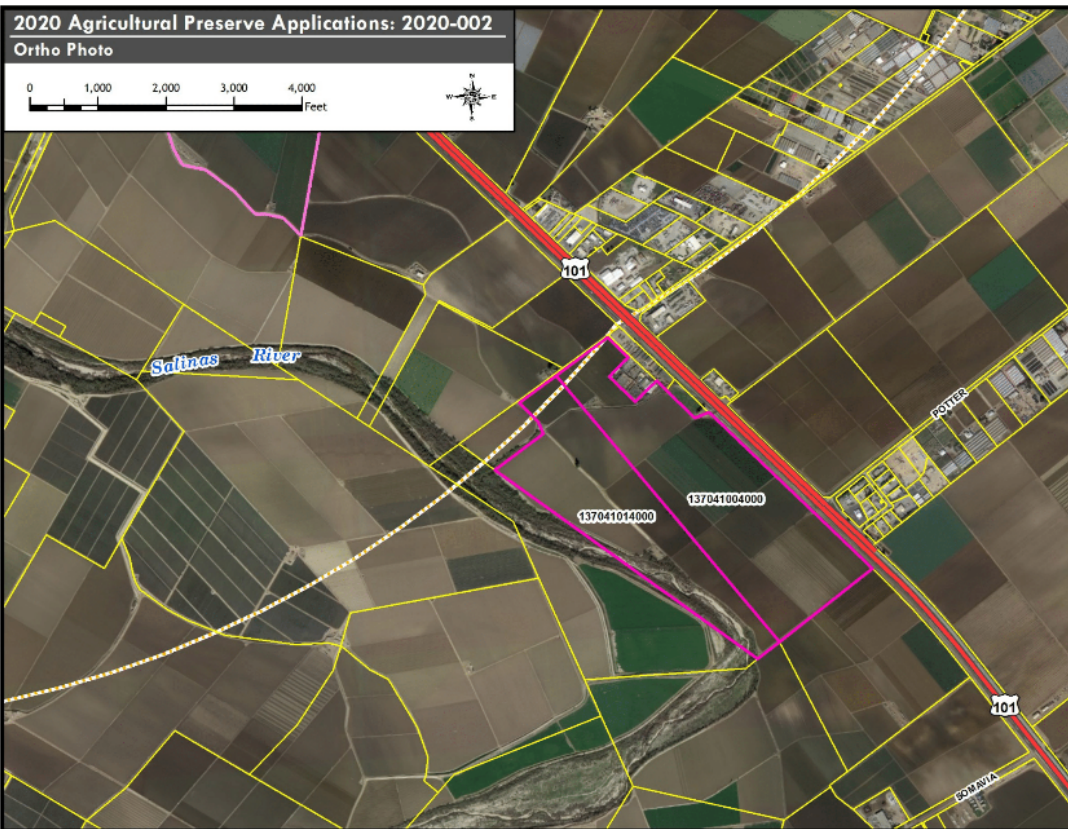
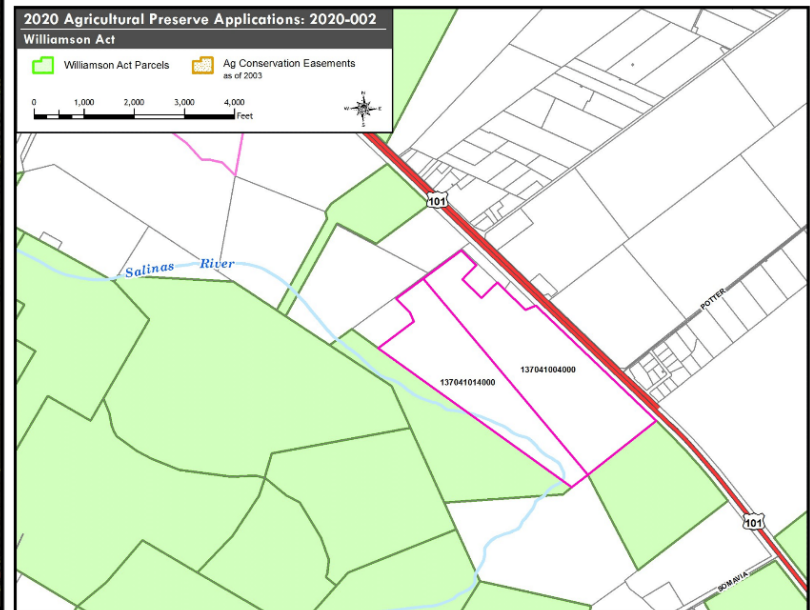
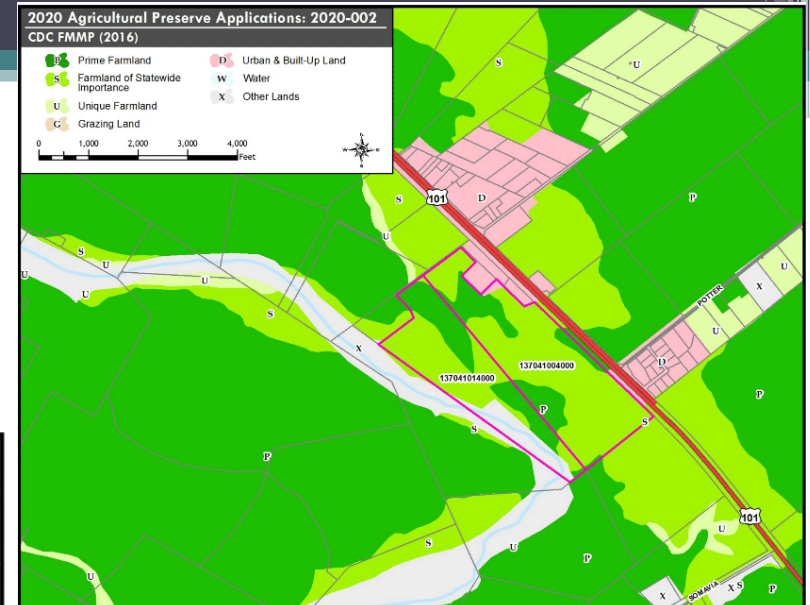
No. 2020-001 Jensen ET AL (FSZ)

- 70.95 acres on Blanco Rd area, Salinas
 - Prime Farmland (FMMP)
- APRC – No Consensus Vote



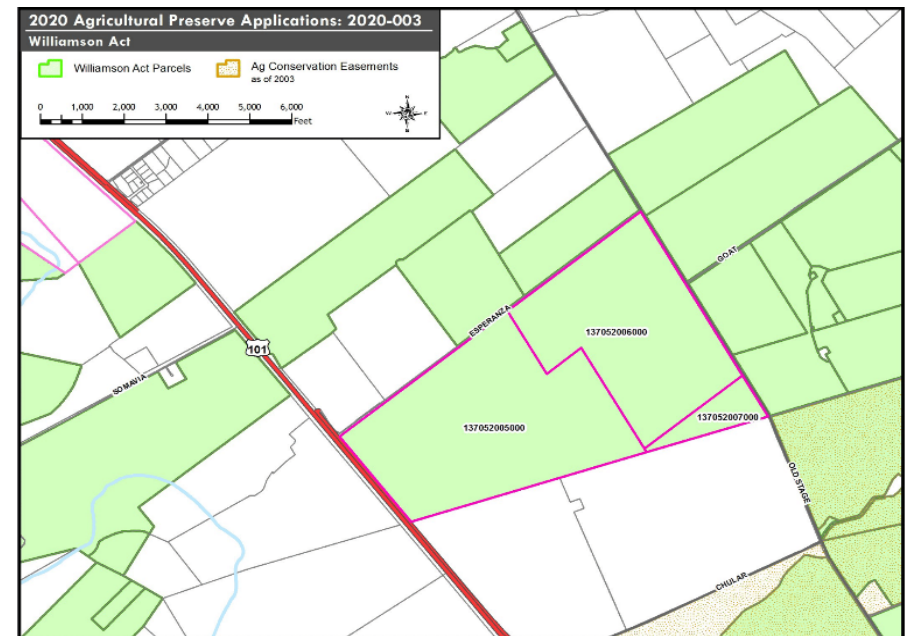
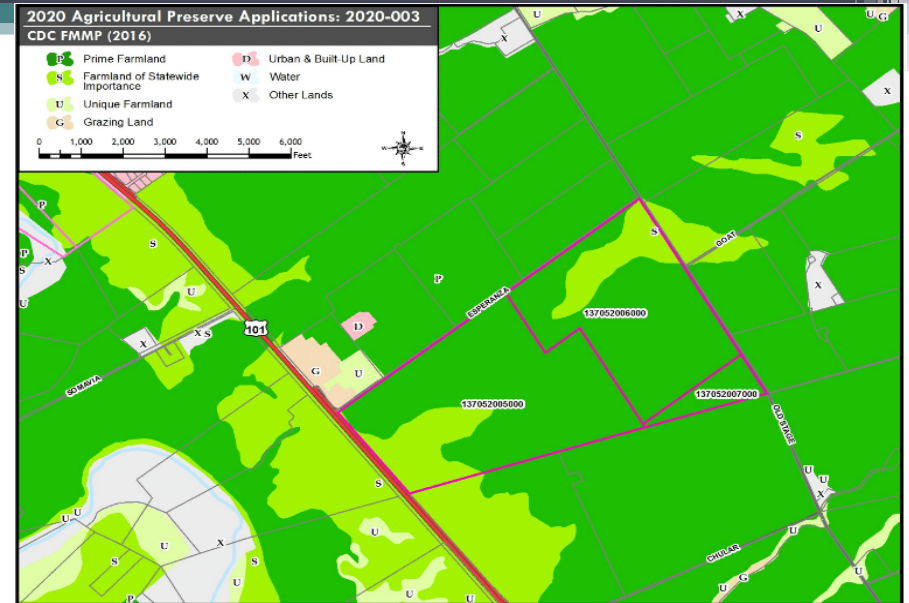
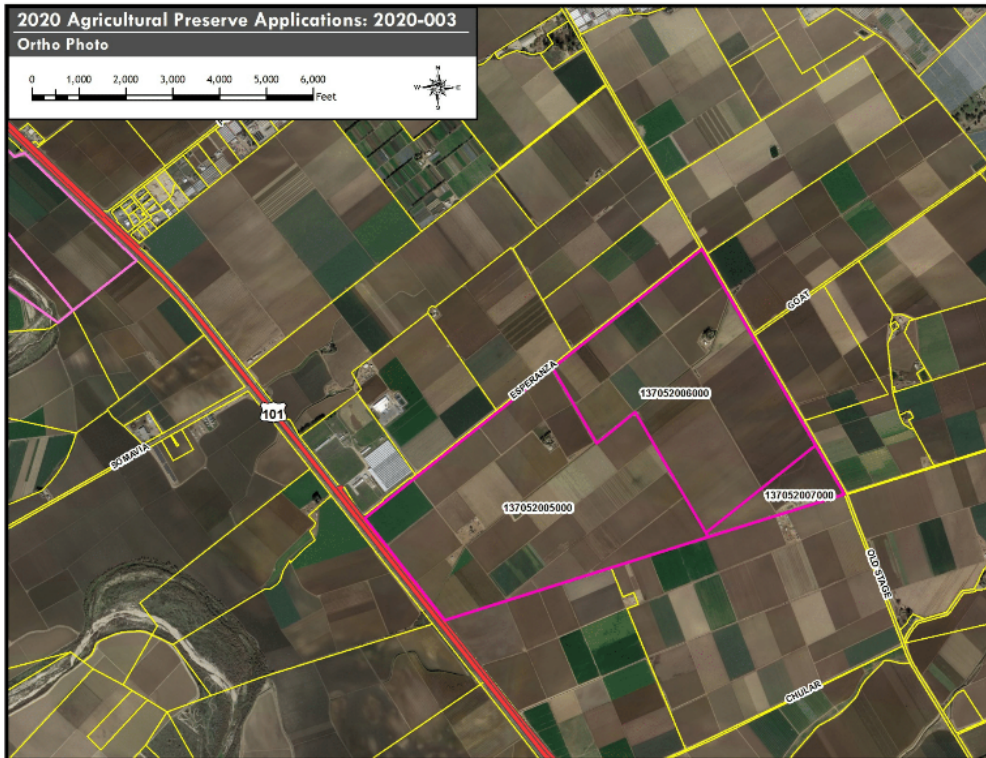
No. 2020-002 Jensen ET AL (FSZ)

- 272.95 acres South of Salinas across from Potter Road
 - Statewide Importance Farmland with pockets of Prime Farmland (FMMP)
- APRC Recommends Approval



No. 2020-003 AJ Esperanza ET AL (FSZ)

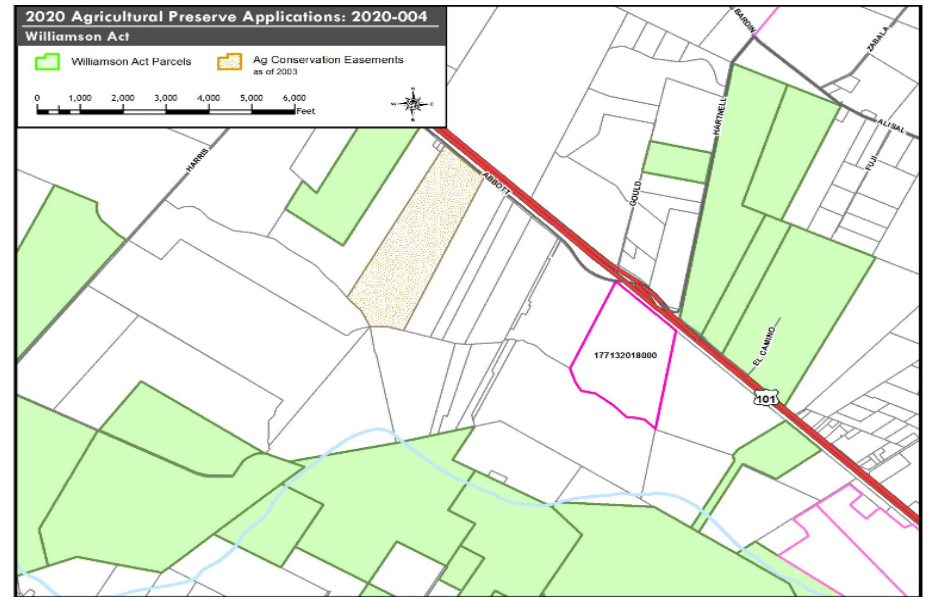
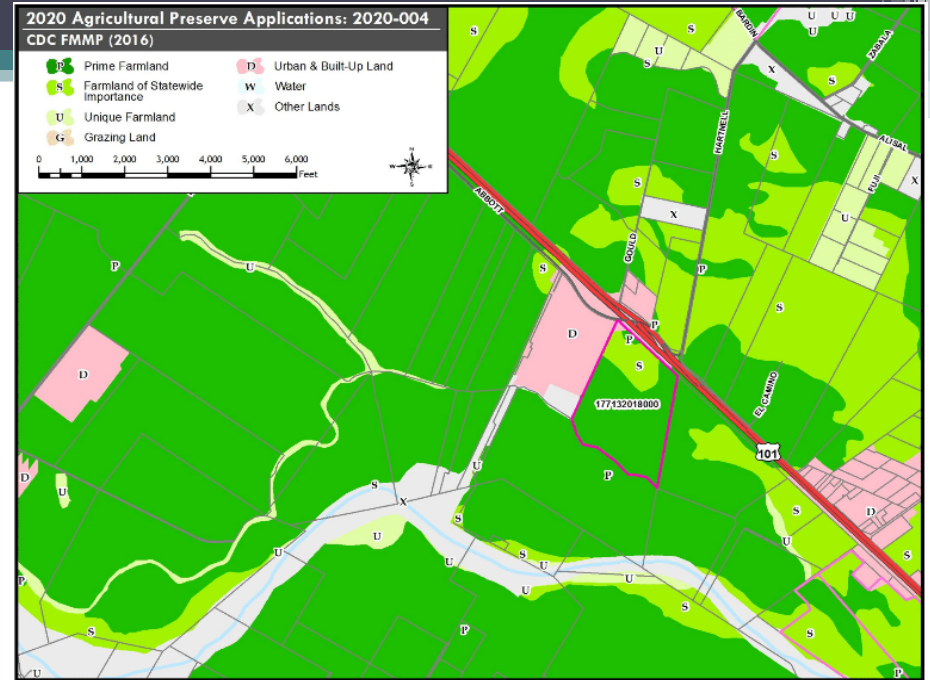
- 901.86 acres at Esperanza Rd, South of Salinas
 - Prime Farmland w/ pockets of Statewide Importance Farmland (FMMP)
 - Upgrading from an AgP
- APRC Recommends Approval



No. 2020-004 Huntington Farms (FSZ)

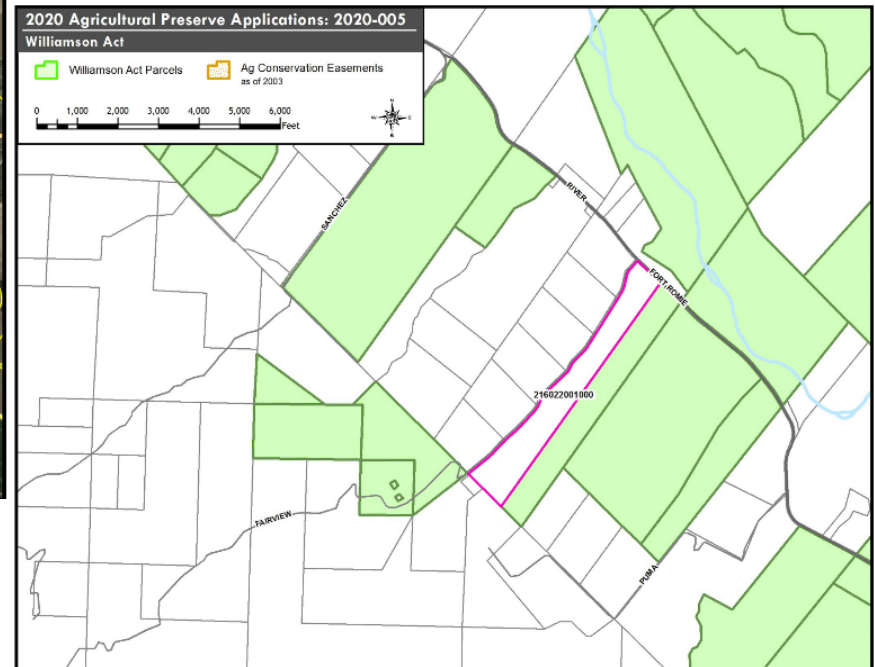
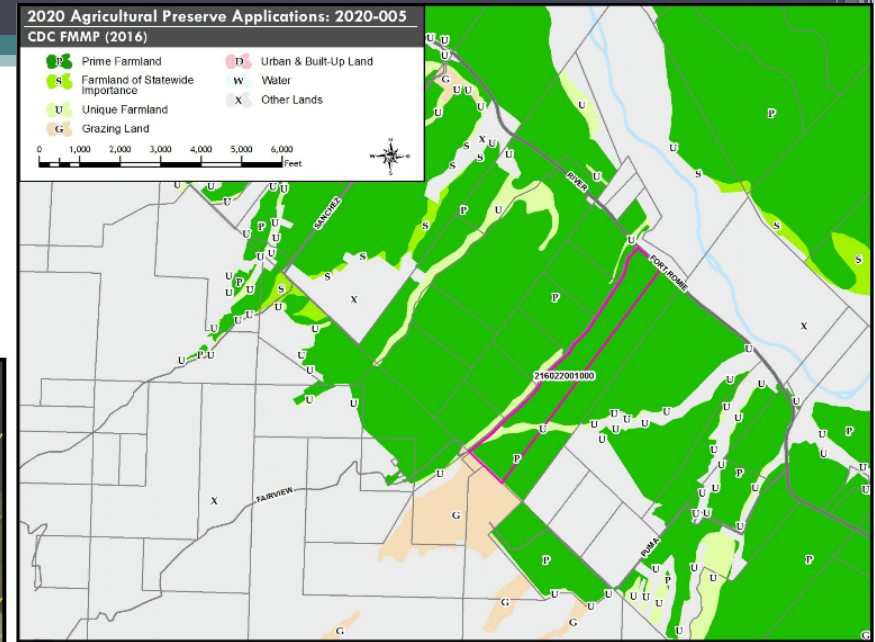
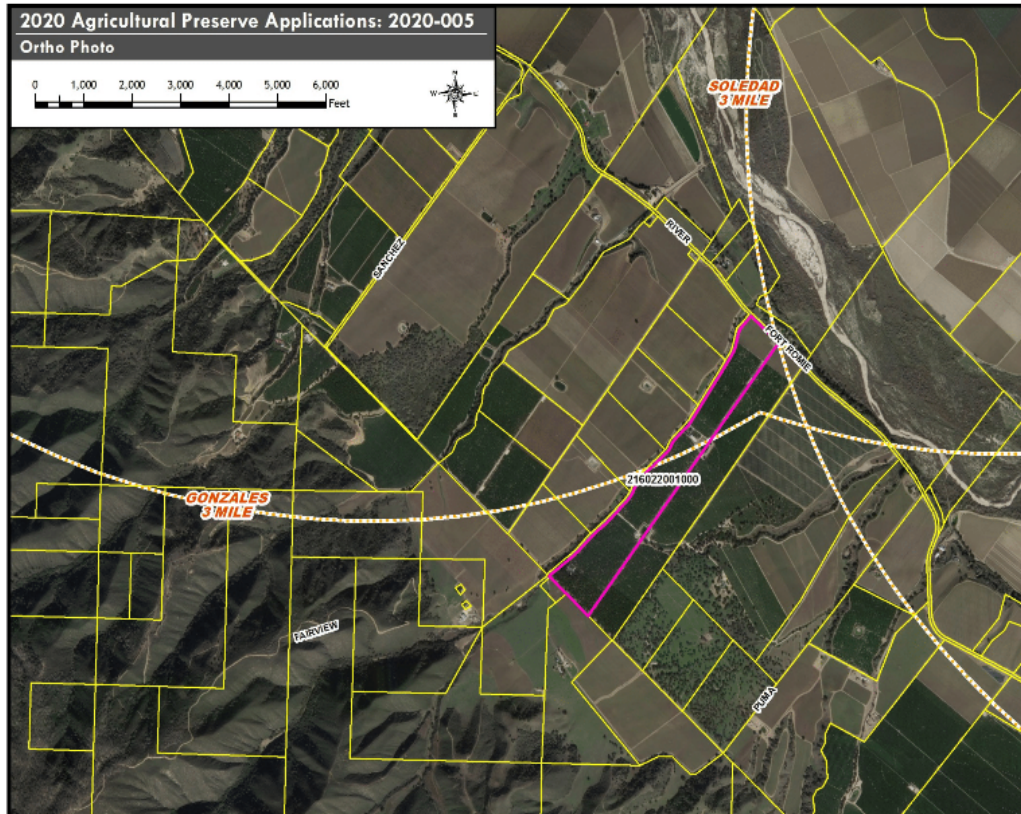
- 132.73 acres South of Salinas across from Hartnell Road
- Prime Farmland with pocket of Statewide Importance Farmland (FMMP)

APRC Recommends Approval



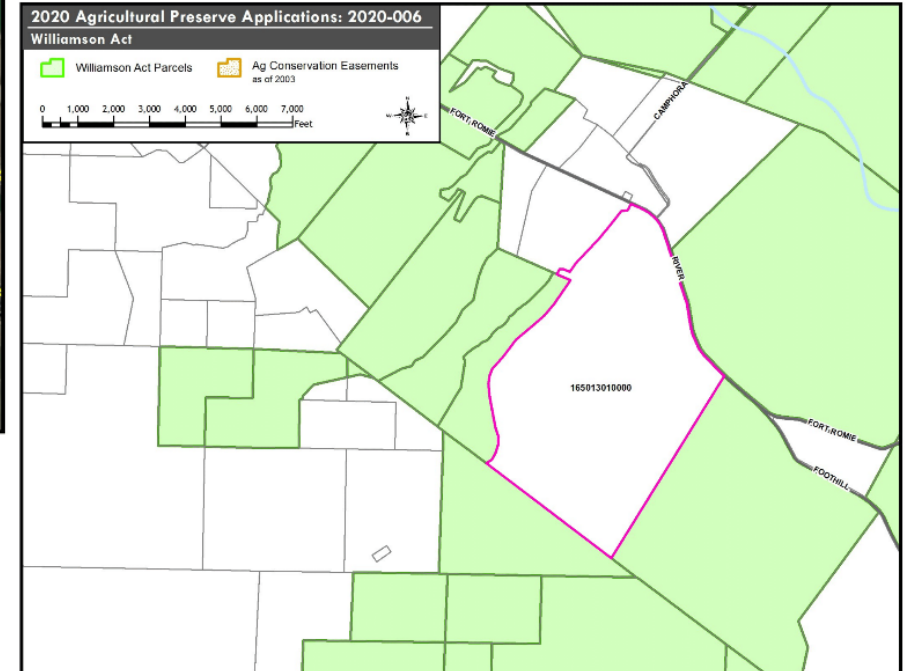
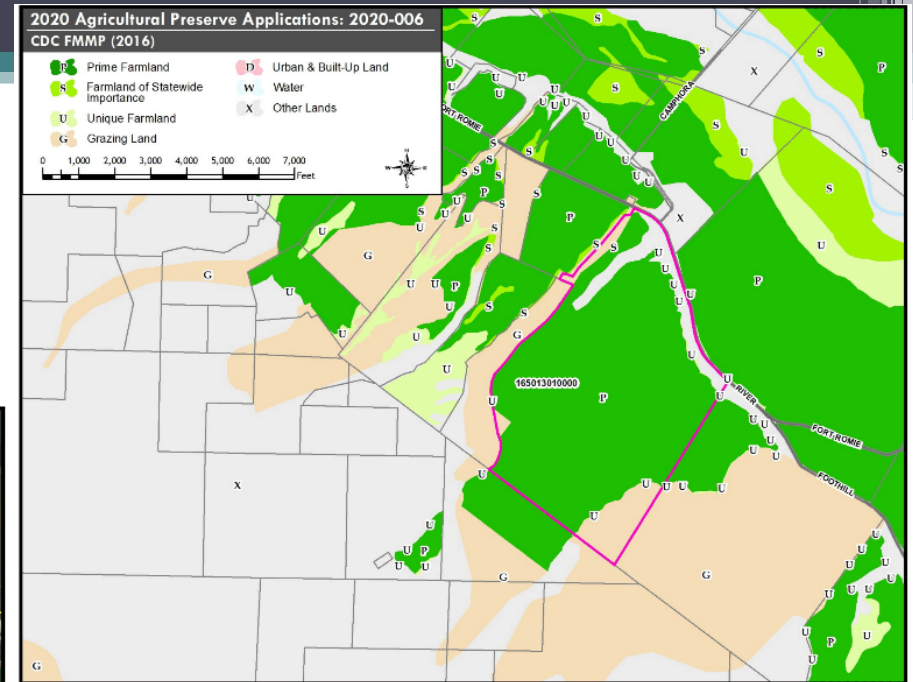
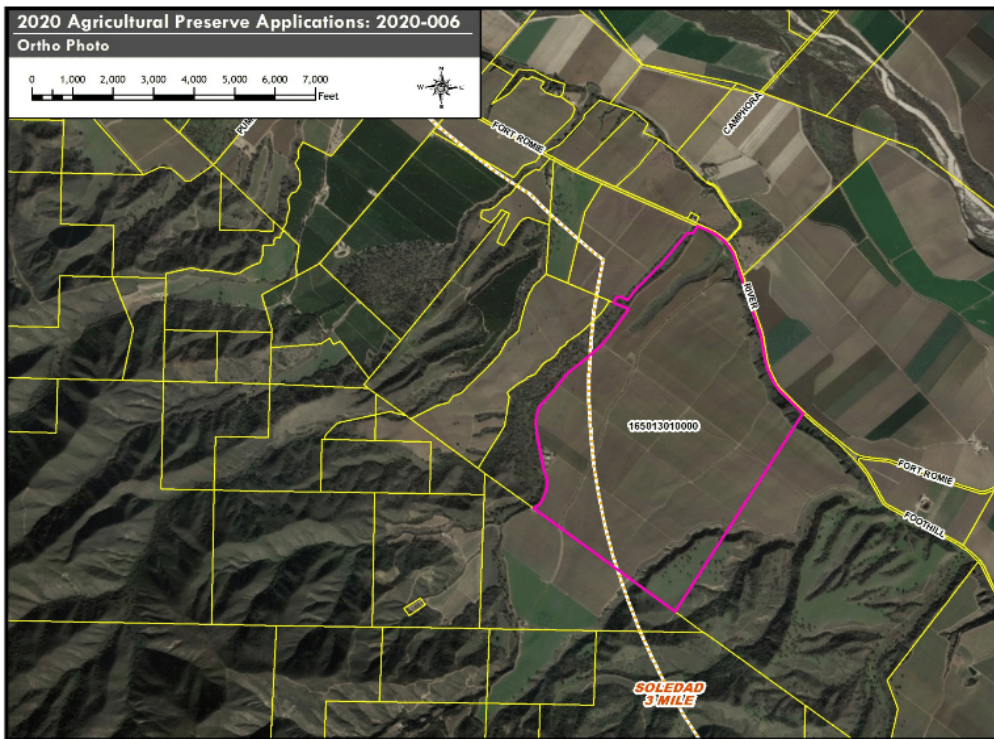
No. 2020-005 Soledad Ranches (FSZ)

- 109 acres in the Ft. Romie area of Soledad
 - Prime Farmland (FMMP)
- APRC Recommends Approval



No. 2020-006 Bianchi Ranch (FSZ)

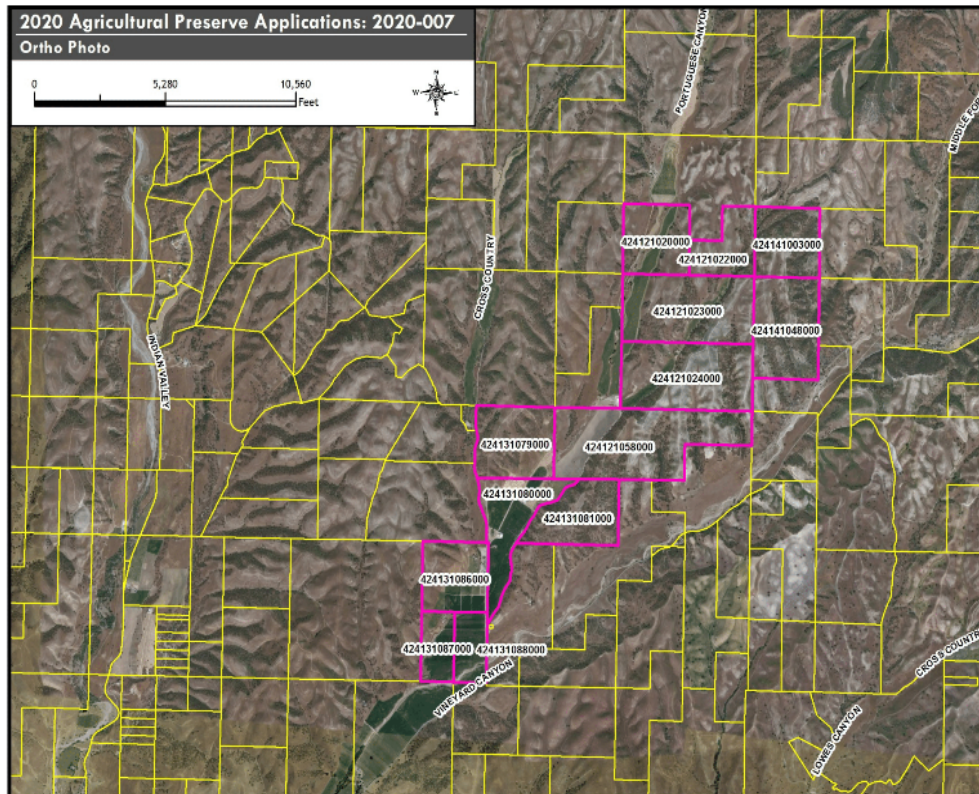
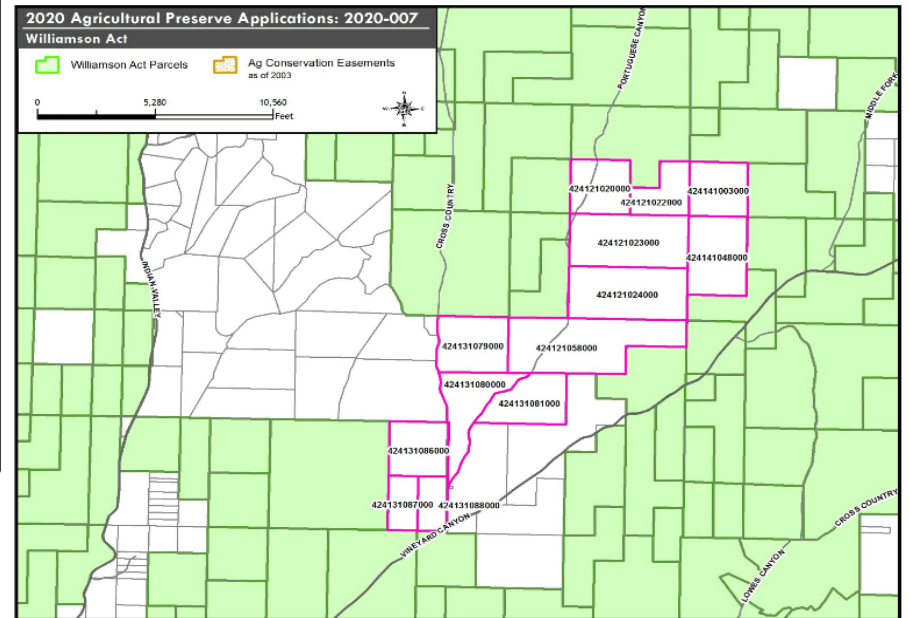
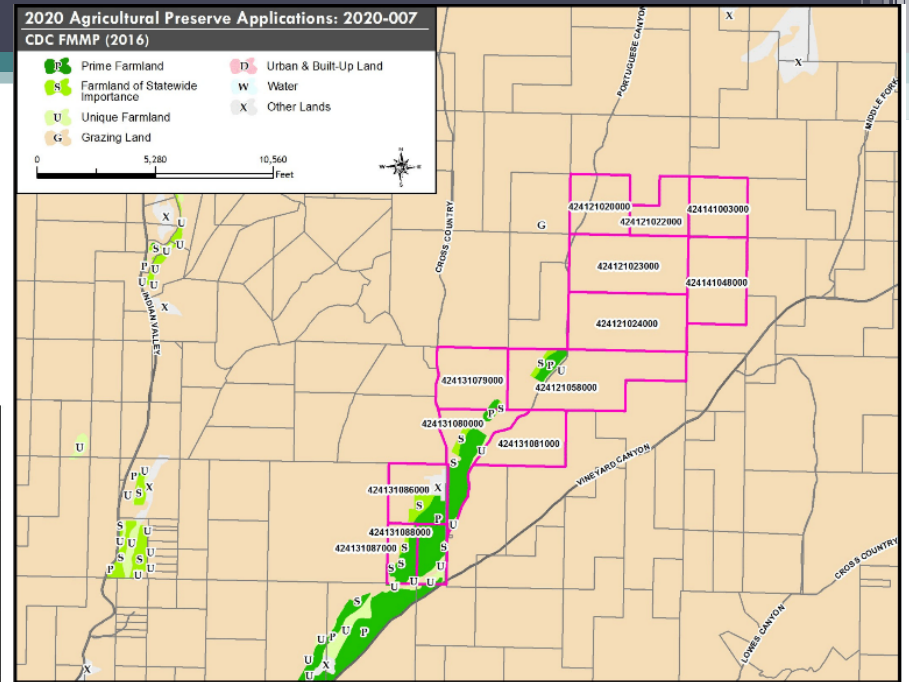
- 911.35 acres in Soledad area (Ft Romie/Foothill)
 - Prime Farmland w/ pockets of Unique Farmland (FMMP)
 - **Already in an FSZ- Applied in Error**
- APRC No Consensus on Refund Request



No. 2020-007 SkyRoseRanch (AgP)

- 2,666 acres in South Monterey County at Vineyard Cyn.
- Majority Grazing Land with pockets of Prime Farmland, Statewide and Unique Farmland (FMMP)

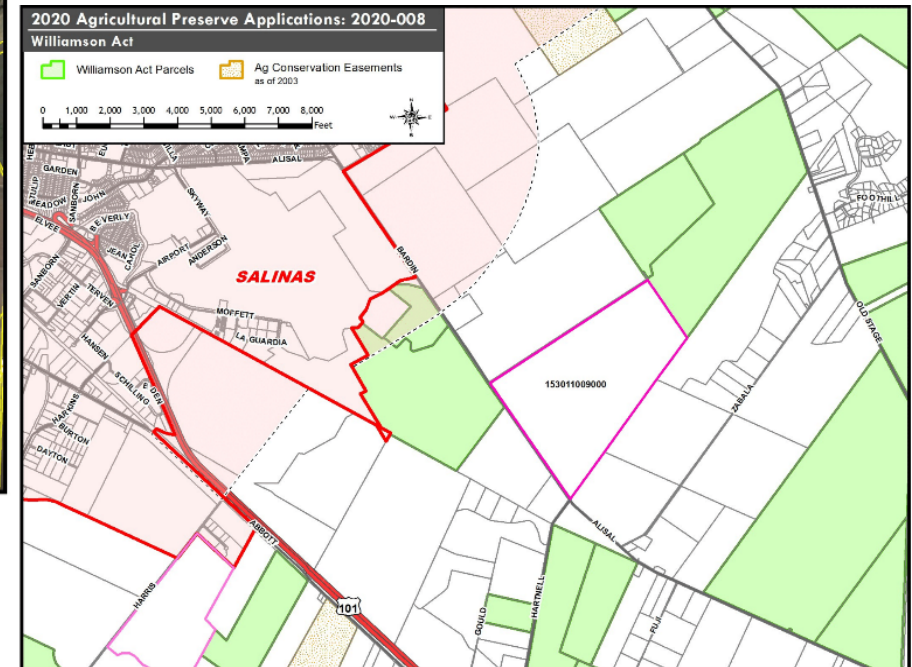
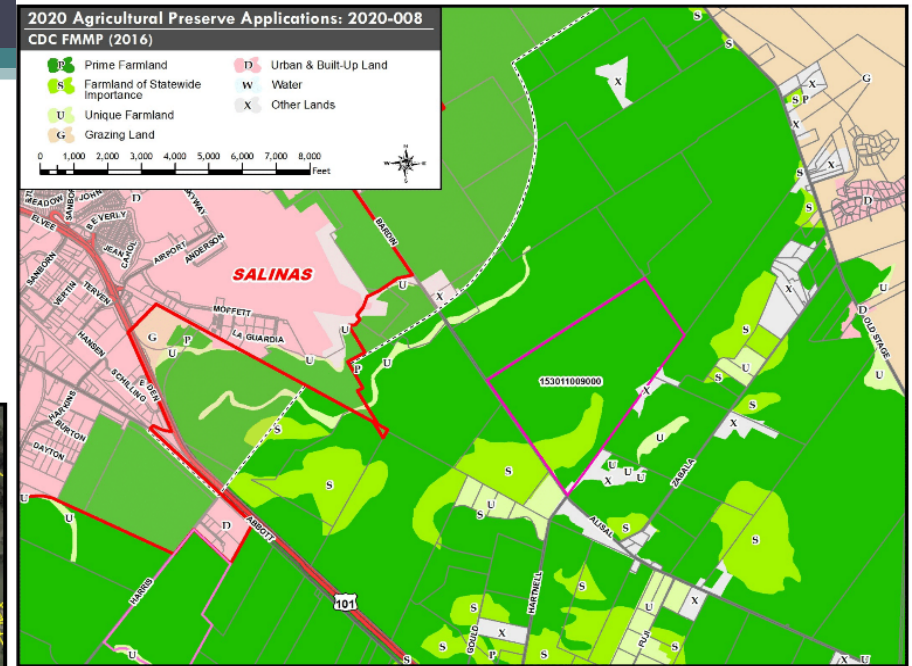
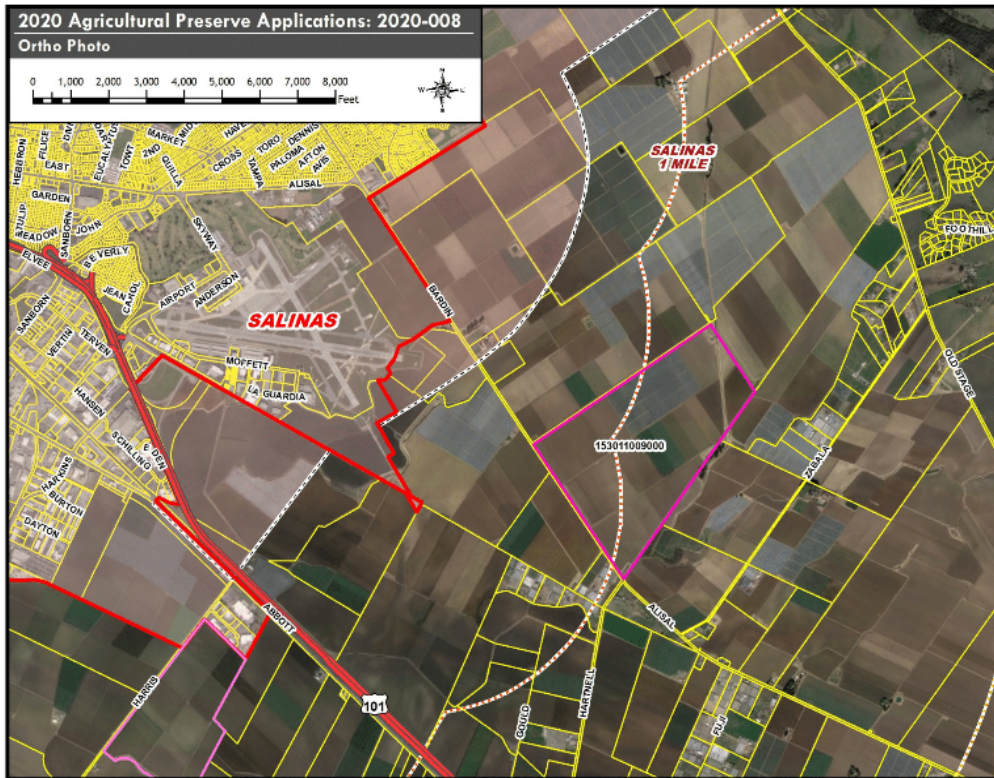
APRC Recommends Approval



No. 2020-008 Cumming (FSZ)

- 410 acres in South of Salinas (Alisal Rd area)
- Prime Farmland with pocket of Statewide Importance (FMMP)

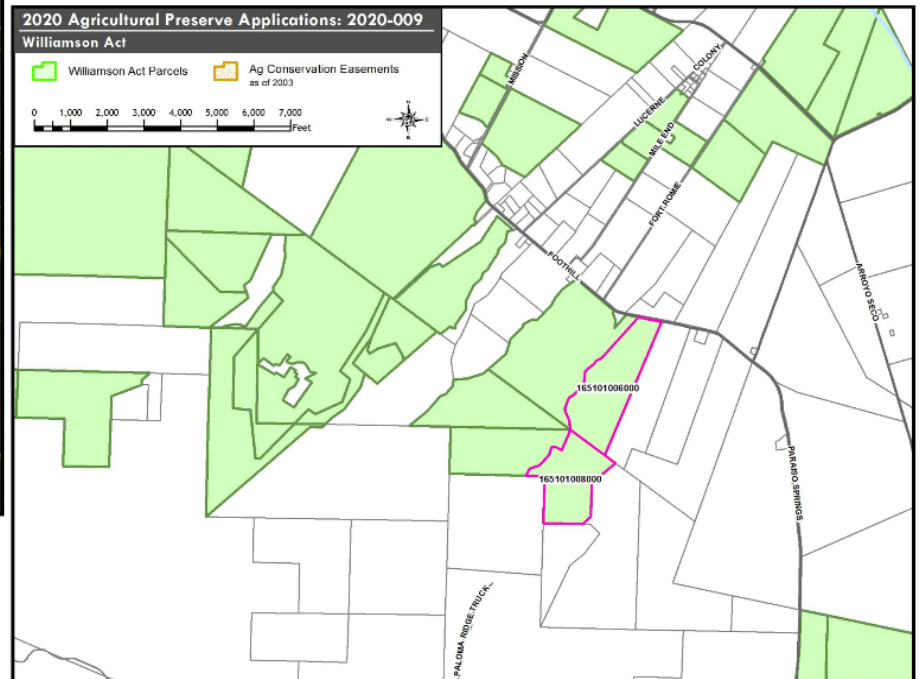
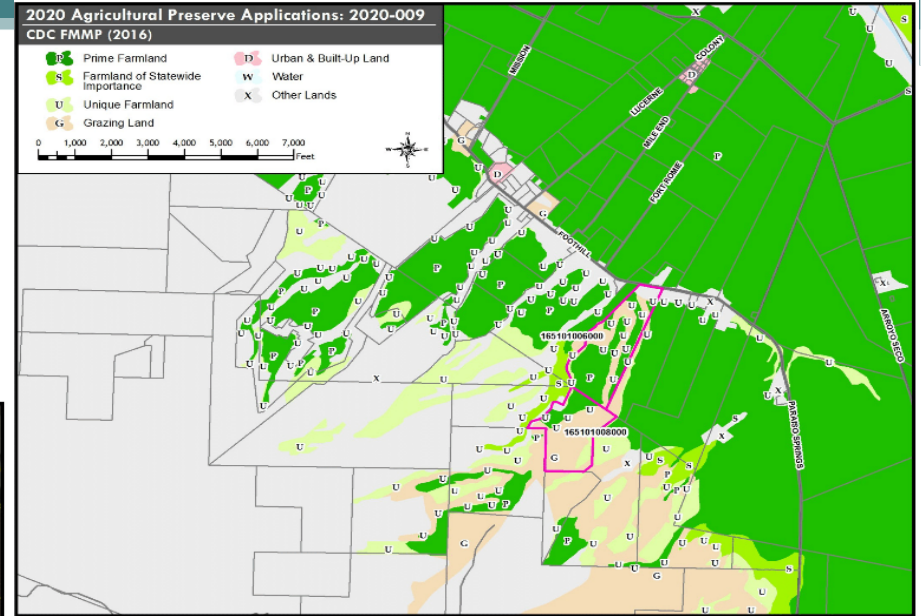
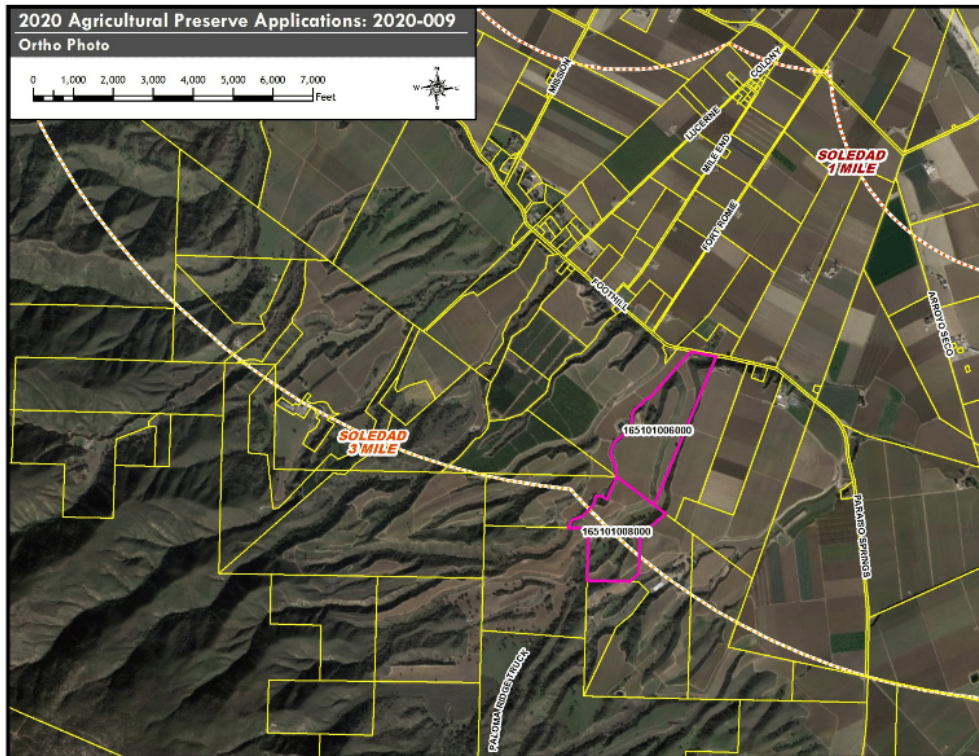
APRC Recommends Approval



No. 2020-009 DeSantiago (FSZ)

- 170 acres in Soledad area
- Prime Farmland, Unique, Grazing Land (FMMP)
- Upgrading from an AgP (73-013 and 73-014)
- **Has been continued since 2015**

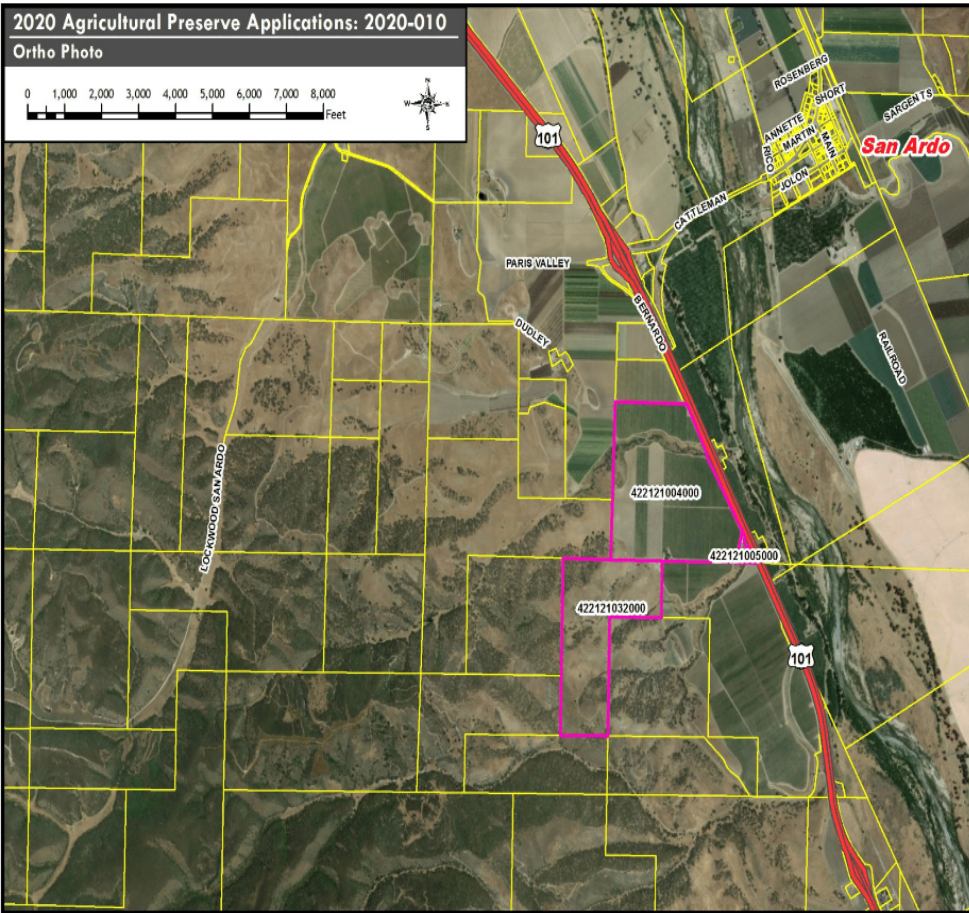
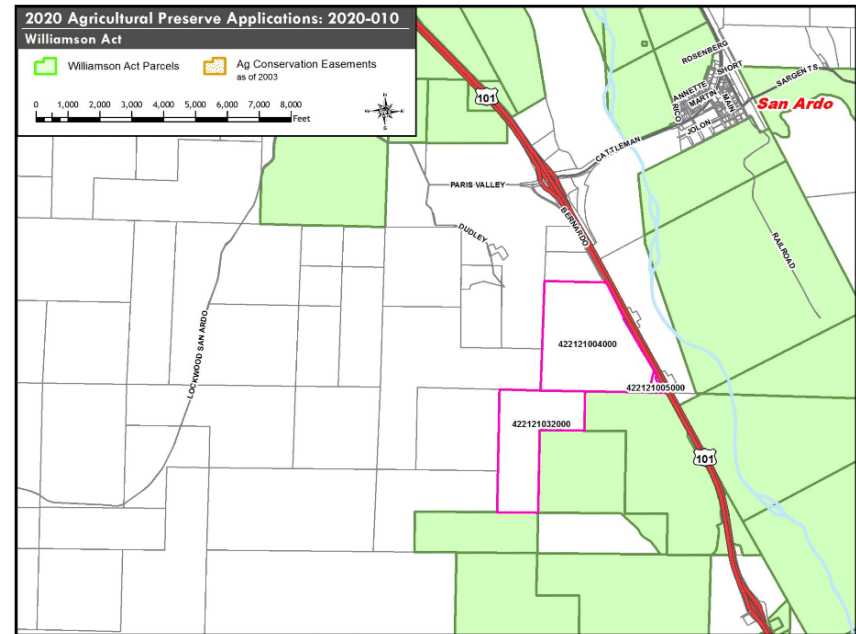
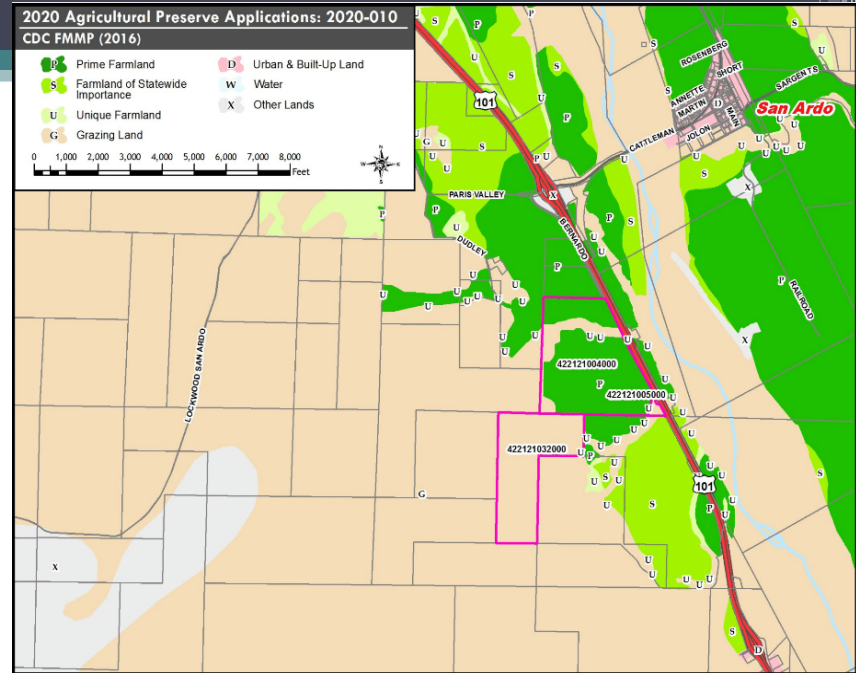
APRC - No Consensus Vote



No. 2020-010 Asellus Monterey (AgP)

- 395 acres in the San Ardo area
- Prime Farmland, Unique, Grazing Land (FMMP)
- Was continued from last year

APRC - Approve only APN-004 at 232 acres and Deny APNs -005 and -032



No. 2020-011 SkyRoseRanch (AgP)

- 2,321 acres in South MoCo at Portuguese Cyn.
 - Grazing Land (FMMP)
- APRC Recommends Approval

