

Attachment C

This page left intentionally blank

OWNERS' STATEMENT

WE HEREBY STATE THAT WE ARE THE OWNERS OF, OR HAVE SOME RIGHT, TITLE OR INTEREST IN AND TO, THE REAL PROPERTY INCLUDED WITHIN THE SUBDIVISION SHOWN UPON THIS MAP. AND THAT WE ARE THE ONLY PERSONS WHOSE CONSENT IS NECESSARY TO PASS A CLEAR TITLE TO SAID PROPERTY, AND WE CONSENT TO THE PREPARATION AND RECORDATION OF SAID MAP AND SUBDIVISION AS SHOWN WITHIN THE SUBDIVISION BOUNDARIES WE ALSO HEREBY RESERVE TO OURSELVES, OUR HEIRS AND ASSIGNS THE EASEMENTS FOR PRIVATE WATER LINE, WELL AND ROAD PURPOSES AS SHOWN ON THIS MAP

Jacqueline Traynor
 JACQUELINE TRAYNOR, TRUSTEE
 1986 HELEN AURIGNAC REVOCABLE TRUST

Jacqueline R. Traynor
 JACQUELINE R. TRAYNOR

Leslie Ann Aurignac
 LESLIE ANN AURIGNAC

Paul Albert Aurignac
 PAUL ALBERT AURIGNAC

Leslie A. Cederquist
 LESLIE A. CEDERQUIST

Paulette A. Aurignac
 PAULETTE A. AURIGNAC

Jeffrey Dennis Traynor
 JEFFREY DENNIS TRAYNOR

Michael Paul Traynor
 MICHAEL PAUL TRAYNOR

Greg Michael Traynor
 GREG MICHAEL TRAYNOR

Jacqueline Rose Traynor
 JACQUELINE ROSE TRAYNOR

Leslie A. Aurignac
 LESLIE A. AURIGNAC

Jacqueline Traynor
 JACQUELINE TRAYNOR, TRUSTEE
 GARRISSERE RANCH COMPANY, A CALIFORNIA GENERAL PARTNERSHIP

EASEMENT HOLDERS

SIGNATURES OF THE FOLLOWING EASEMENT HOLDERS HAVE BEEN OMITTED UNDER THE PROVISIONS OF SECTION 66436(a)(3)(A)(v) OF THE GOVERNMENT CODE

PACIFIC GAS AND ELECTRIC COMPANY PER DOCUMENT RECORDED JANUARY 21, 1946 IN BOOK 919, PAGE 37 AND DOCUMENT RECORDED OCTOBER 23, 1950 IN BOOK 1254, PAGE 155, BOTH OF OFFICIAL RECORDS

PACIFIC TELEPHONE AND TELEGRAPH COMPANY PER DOCUMENT RECORDED APRIL 27, 1948 IN BOOK 1055, PAGE 497 AND DOCUMENT RECORDED APRIL 4, 1949 IN BOOK 1130, PAGE 34 AND DOCUMENT RECORDED JULY 1, 1949 IN BOOK 1147, PAGE 352, ALL OF OFFICIAL RECORDS

THE TEXAS COMPANY, A DELAWARE CORPORATION PER DOCUMENT RECORDED NOVEMBER 4, 1950 IN BOOK 1257, PAGE 252 AND DOCUMENT RECORDED DECEMBER 13, 1950 IN BOOK 1266, PAGE 169, BOTH OF OFFICIAL RECORDS

STATE OF CALIFORNIA PER DOCUMENT RECORDED OCTOBER 6, 1961 IN BOOK 2190, PAGE 97 AND DOCUMENT RECORDED OCTOBER 18, 1961 IN BOOK 2193, PAGE 569, AND PER DOCUMENT RECORDED AUGUST 15, 1980 IN REEL 1425, PAGE 325, ALL OF OFFICIAL RECORDS

MARIE L. GARRISSERE PER DOCUMENT RECORDED OCTOBER 6, 1961 IN BOOK 2190, PAGE 101 AND BOOK 2190, PAGE 104, BOTH OF OFFICIAL RECORDS

ROBERT L. SULLIVAN JR., TRUSTEE OF THE MARKO SCOTT ZANINOVICH LIVING TRUST PER DOCUMENT RECORDED SEPTEMBER 15, 1989 IN REEL 2411, PAGE 18 OF OFFICIAL RECORDS

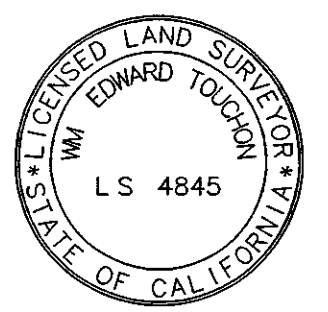
SHEET INDEX

SHEET NO	
1	CERTIFICATE SHEET
2	CERTIFICATE SHEET
3	SHEET INDEX
4-13	PARCEL SHEETS
14-17	SECTION BREAKDOWNS
18	ADDITIONAL INFORMATION SHEET

SURVEYOR'S STATEMENT

THIS MAP WAS PREPARED BY ME OR UNDER MY DIRECTION AND IS BASED ON A FIELD SURVEY AND RECORD DATA IN CONFORMANCE WITH THE REQUIREMENTS OF THE SUBDIVISION MAP ACT AND LOCAL ORDINANCE AT THE REQUEST OF SUPERIOR COURT, COUNTY OF MONTEREY, IN JULY, 2013 I HEREBY STATE THAT THIS PARCEL MAP SUBSTANTIALLY CONFORMS TO THE APPROVED OR CONDITIONALLY APPROVE TENTATIVE MAP, IF ANY ALL MONUMENTS ARE OF THE CHARACTER AND OCCUPY THE POSITIONS INDICATED AND THE MONUMENTS ARE SUFFICIENT TO ENABLE THE SURVEY TO BE RETRACED

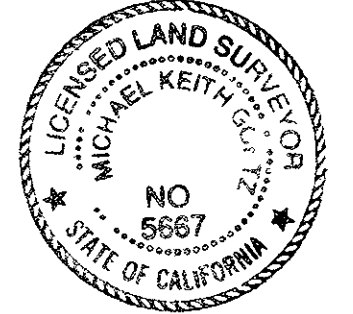
Wm. E. Touchon 12-19-2016
 WM E TOUCHON PLS 4845 DATE



COUNTY SURVEYOR'S STATEMENT

I, MICHAEL K GOETZ, COUNTY SURVEYOR OF MONTEREY COUNTY, HEREBY STATE THAT I HAVE EXAMINED THIS MAP, THAT THE SUBDIVISION AS SHOWN HEREON IS SUBSTANTIALLY THE SAME AS IT APPEARED ON THE TENTATIVE MAP AND ANY APPROVED ALTERATIONS THEREOF, AS APPROVED BY THE MINOR SUBDIVISION COMMITTEE OF THE COUNTY OF MONTEREY ON MAY 9, 2013, THAT ALL THE PROVISIONS OF THE CALIFORNIA "SUBDIVISION MAP ACT", AS AMENDED, AND MONTEREY COUNTY CODE, TITLE 19, HAVE BEEN COMPLIED WITH, AND I AM SATISFIED THAT THIS MAP IS TECHNICALLY CORRECT

Michael K. Goetz 3/31/17
 MICHAEL K GOETZ PLS 5667 DATE
 COUNTY SURVEYOR
 MONTEREY COUNTY, CALIFORNIA



RECORDER'S STATEMENT

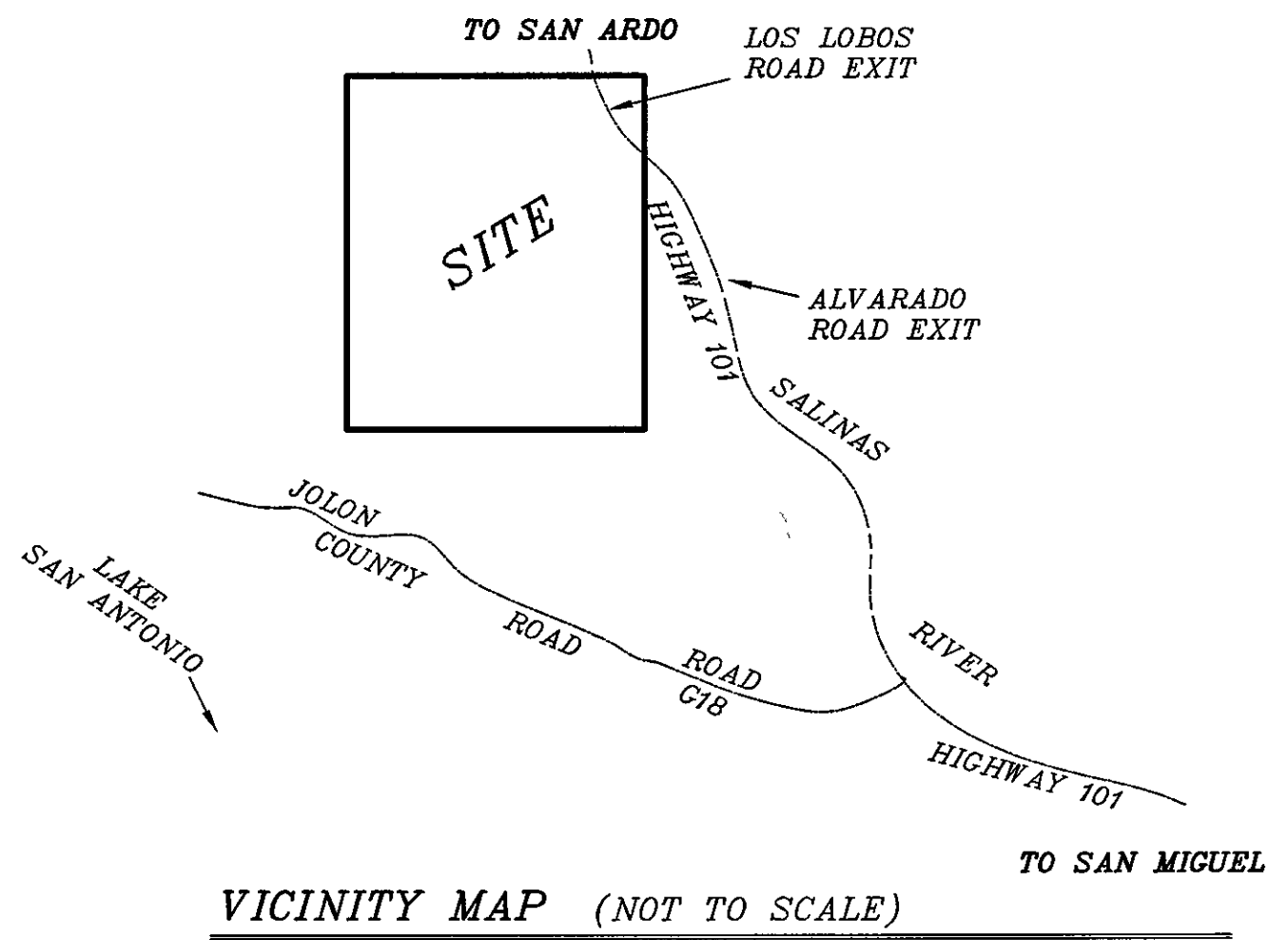
FILED THIS _____ DAY OF _____, 2017, AT _____ M
 IN VOLUME _____ OF PARCEL MAPS AT PAGE _____
 AT THE REQUEST OF WM E TOUCHON

 COUNTY RECORDER, MONTEREY COUNTY
 BY _____
 DEPUTY RECORDER
 SERIAL NO _____ FEE _____

DEEDS OF TRUST

COAST NATIONAL BANK, AS BENEFICIARY UNDER DEED OF TRUST RECORDED OCTOBER 28, 2010 AS INSTRUMENT NO 2010-034817 OF OFFICIAL RECORDS

SIGNATURE OF THE BENEFICIARY AND TRUSTEE OF THE ABOVE DEEDS OF TRUST HAVE BEEN OMITTED UNDER THE PROVISIONS OF SECTION 66445(e) OF THE GOVERNMENT CODE

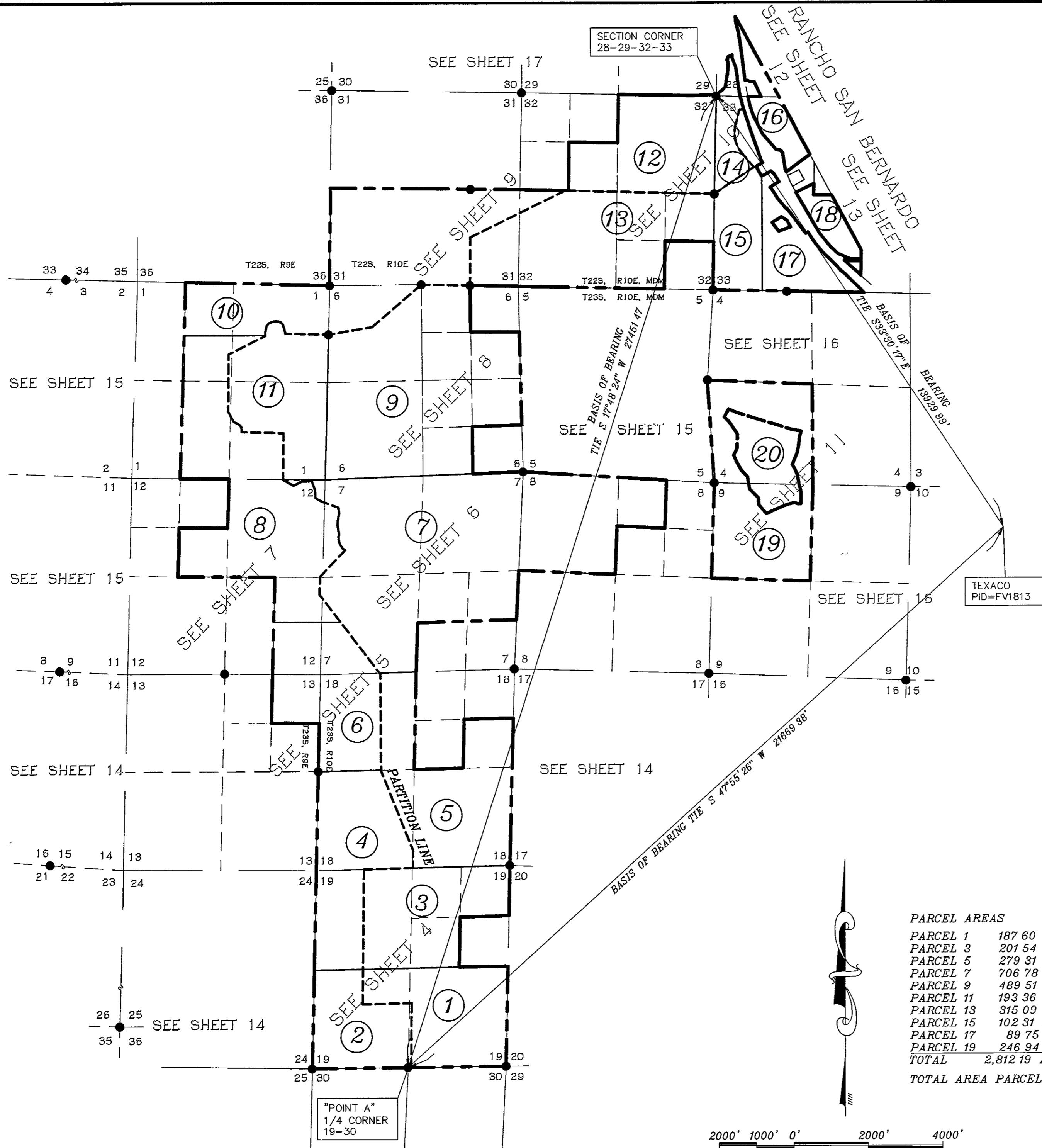


VICINITY MAP (NOT TO SCALE)

PARCEL MAP
 PLN 110015
 RESOLUTION NO. 13-003

BEING A SUBDIVISION OF A PORTION OF SECTIONS 28, 31, 32 AND 33, T22S, R10E OF MDB&M ALONG WITH A PORTION OF SECTIONS 1, 12 AND 13, T23S, R9E OF MDB&M, ALONG WITH A PORTION OF SECTIONS 4, 6, 7, 8, 9, 18 AND 19, T23S, R10E, MDB&M, IN THE COUNTY OF MONTEREY, STATE OF CALIFORNIA

TWIN CITIES SURVEYING, INC.
 615-C S MAIN STREET / PO BOX 777
 TEMPLETON, CALIFORNIA 93465-0777
 (805) 434-1834
 SHEET 1 OF 18 DEC, 2016 JN 10002



- LEGEND:**
- = SET 5/8" REBAR WITH ALUMINUM CAP "LS 4845"
 - = SET NAIL WITH BRASS TAG "LS 4845" SET ON TOP OF FENCE
 - = FOUND MONUMENT AS NOTED
 - M = MEASURED DATA
 - FD = FOUND
 - IP = IRON PIPE
 - BC = BRASS CAP
 - R = GLO (1880) (REILLY), (1878) (HERRMANN)
 - R1 = 31 SURV 71 (2011)
 - R2 = 16 SURV 16 (1989)
 - R3 = X-4 SURV 70 (1967)
 - R4 = DIVISION OF HIGHWAY RIGHT OF WAY MAP 5-MON-101 P.M R16 4-R19 3
 - R5 = 5 PM 92 (1973)
 - R6 = LOU G HARE, C E FIELD NOTES FIELD BOOK VOL 25 (1900) ON FILE IN THE OFFICE OF THE COUNTY SURVEYOR
 - R7 = 9 SURV 125 (1970)
 - R8 = 3 PM 71 (1972)
 - R9 = 14 PM 172 (1979)
 - R10 = 13 SURV 91 (1983)
 - R11 = 5 SURV 25 (1955)
 - SNF = SEARCHED NOTHING FOUND
 - SP = SINGLE PROPORTION
 - DP = DOUBLE PROPORTION
 - INTX = INTERSECTION
 - FTC = FROM TRUE CORNER
 - CF = CALCULATED FROM RECORD
 - PR = PRORATION-ROTATION
 - NTS = NOT TO SCALE
- = BOUNDARY PER THIS SURVEY AND MAP
- = PARTITION LINE
- ① = PARCEL NUMBER

BASIS OF BEARING

THE "BASIS OF BEARING" FOR THIS MAP & SURVEY IS GRID NORTH PER CALIFORNIA COORDINATE SYSTEM "CCS83-ZONE 4" [REFERENCE EPOCH 2005 8342]

BEARINGS ARE BASED LOCALLY UPON FIELD-OBSERVED TIES TO THE FOLLOWING CONTINUOUSLY OPERATING REFERENCE STATION (CORS)

CORS STATION CRBT (CAMP ROBERTS)

STATION	NORTHING	EASTING
CRBT	1811986 819	6042418 594
"POINT A"	1855262 623	5989801 900

CRBT → "POINT A" N 50°33'49" W 68,127.17'

THE GRID CONVERGENCE ANGLE AT "POINT A" IS -01°09'07"

ALL MEASURED DISTANCES (NOT ENCLOSED WITHIN BRACKETS), ARE GRID DISTANCES TO OBTAIN GROUND DISTANCES, MULTIPLY GRID DISTANCES BY 1.000015679

ALL DISTANCES ARE IN TERMS OF THE U S SURVEY FOOT AND DECIMALS THEREOF

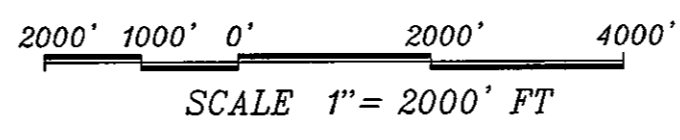
PARCEL AREAS	PARCEL AREAS
PARCEL 1 187 60 ACRES	PARCEL 2 133 72 ACRES
PARCEL 3 201 54 ACRES	PARCEL 4 216 33 ACRES
PARCEL 5 279 31 ACRES	PARCEL 6 216 08 ACRES
PARCEL 7 706 78 ACRES	PARCEL 8 413 19 ACRES
PARCEL 9 489 51 ACRES	PARCEL 10 435 23 ACRES
PARCEL 11 193 36 ACRES	PARCEL 12 199 02 ACRES
PARCEL 13 315 09 ACRES	PARCEL 14 44 58 ACRES
PARCEL 15 102 31 ACRES	PARCEL 16 53 79 ACRES
PARCEL 17 89 75 ACRES	PARCEL 18 36 69 ACRES
PARCEL 19 246 94 ACRES	PARCEL 20 80 08 ACRES
TOTAL 2,812 19 ACRES	TOTAL 1,828 71 ACRES

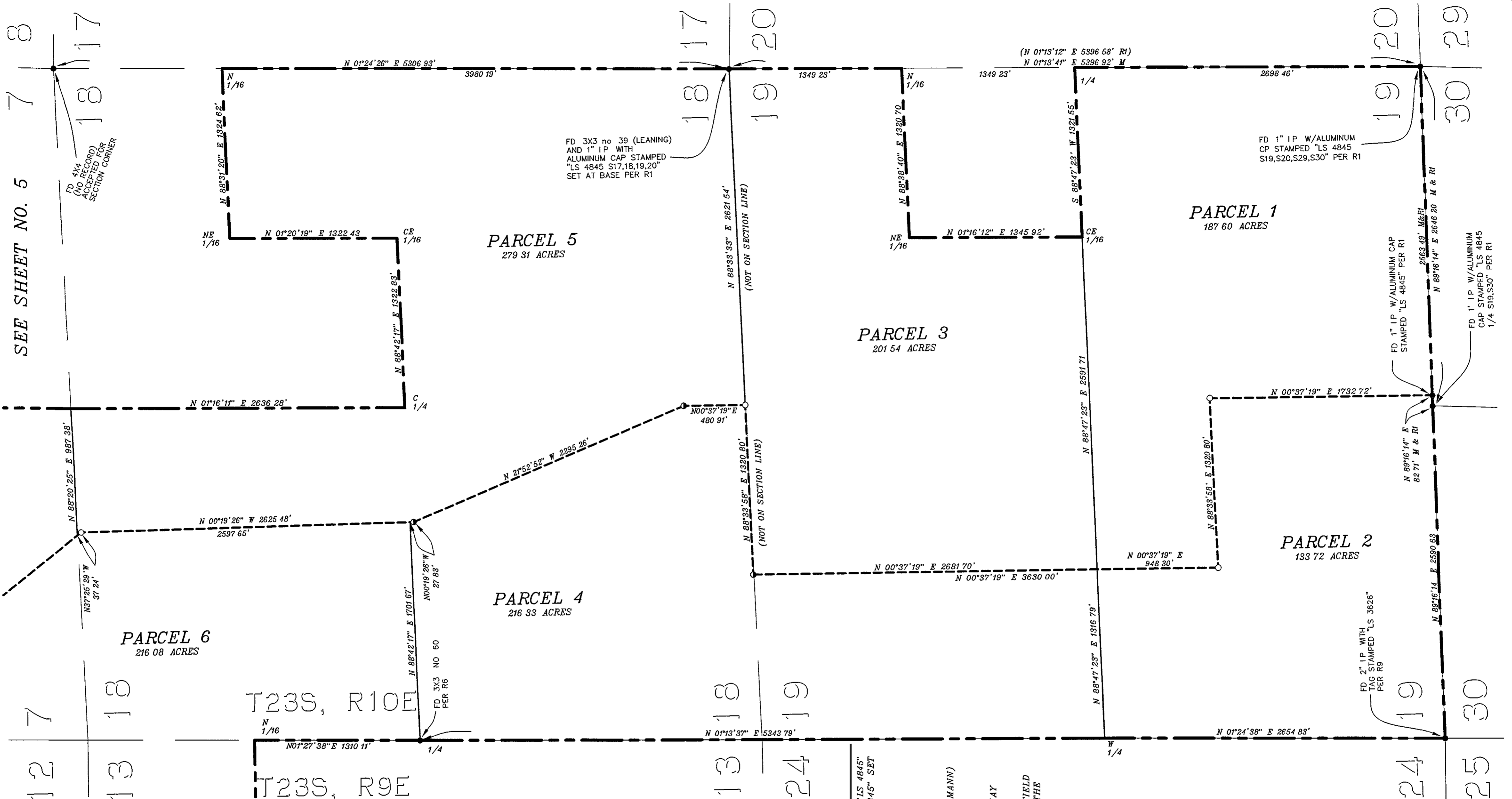
TOTAL AREA PARCELS 1 THROUGH 20 = 4,640 90 ACRES

PARCELS SHEET INDEX
PARCEL MAP
PLN 110015
RESOLUTION NO. 13-003

BEING A SUBDIVISION OF A PORTION OF SECTIONS 28, 31, 32 AND 33, T22S, R10E OF MDB&M ALONG WITH A PORTION OF SECTIONS 1, 12 AND 13, T23S, R9E OF MDB&M, ALONG WITH A PORTION OF SECTIONS 4, 6, 7, 8, 9, 18 AND 19, T23S, R10E, MDB&M, IN THE COUNTY OF MONTEREY, STATE OF CALIFORNIA

TWIN CITIES SURVEYING, INC.
615-C S MAIN STREET / P O BOX 777
TEMPLETON, CALIFORNIA 93465-0777
(805) 434-1834
SHEET 3 OF 18 DEC, 2016 JN 10002





SEE SHEET NO. 5 7 8

12 7
13 18

13 18
24 19

19 20
24 19
25 30

PARCEL 6
216 08 ACRES

PARCEL 4
216 33 ACRES

PARCEL 3
201 54 ACRES

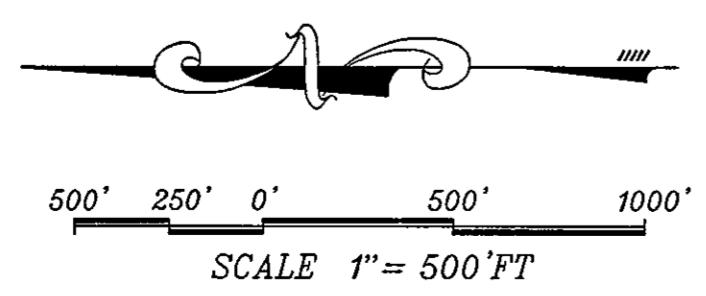
PARCEL 5
279 31 ACRES

PARCEL 1
187 60 ACRES

PARCEL 2
133 72 ACRES

T23S, R10E

T23S, R9E



LEGEND:

- = SET 5/8" REBAR WITH ALUMINUM CAP "LS 4845"
- = SET NAIL WITH BRASS TAG "LS 4845" SET ON TOP OF FENCE
- = FOUND MONUMENT AS NOTED
- M = MEASURED DATA
- FD = FOUND
- IP = IRON PIPE
- BC = BRASS CAP
- R = GLO (1880) (REILLY), (1878) (HERRMANN)
- R1 = 31 SURV 71 (2011)
- R2 = 16 SURV 16 (1989)
- R3 = X-4 SURV 70 (1967)
- R4 = DIVISION OF HIGHWAY RIGHT OF WAY MAP 5-MON-101 P.M. R16 4-R19 3
- R5 = 5 PM 92 (1973)
- R6 = LOU G HARE, C E FIELD NOTES FIELD BOOK VOL 25 (1900) ON FILE IN THE OFFICE OF THE COUNTY SURVEYOR
- R7 = 9 SURV 125 (1970)
- R8 = 3 PM 71 (1972)
- R9 = 14 PM 172 (1979)
- R10 = 13 SURV 91 (1983)
- R11 = 5 SURV 25 (1955)
- SNF = SEARCHED NOTHING FOUND
- SP = SINGLE PROPORTION
- DP = DOUBLE PROPORTION
- INTX = INTERSECTION
- FTC = FROM TRUE CORNER
- CF = CALCULATED FROM RECORD
- PR = PREPARATION-ROTATION
- NTS = NOT TO SCALE
- = BOUNDARY PER THIS SURVEY AND MAP
- - - = PARTITION LINE

PARCEL MAP
PLN 110015
RESOLUTION NO. 13-003

BEING A SUBDIVISION OF A PORTION OF SECTIONS 28, 31, 32 AND 33, T23S, R10E OF MDB&M ALONG WITH A PORTION OF SECTIONS 1, 12 AND 13, T23S, R9E OF MDB&M, ALONG WITH A PORTION OF SECTIONS 4, 6, 7, 8, 9, 18 AND 19, T23S, R10E, MDB&M, IN THE COUNTY OF MONTEREY, STATE OF CALIFORNIA

TWIN CITIES SURVEYING, INC.
615-C S MAIN STREET / P.O. BOX 777
TEMPLETON, CALIFORNIA 93465-0777
(805) 434-1834
SHEET 4 OF 18 DEC, 2016 JN 10002

FD 3X3 no 39 (LEANING) AND 1" IP WITH ALUMINUM CAP STAMPED "LS 4845 S17,18,19,20" SET AT BASE PER R1

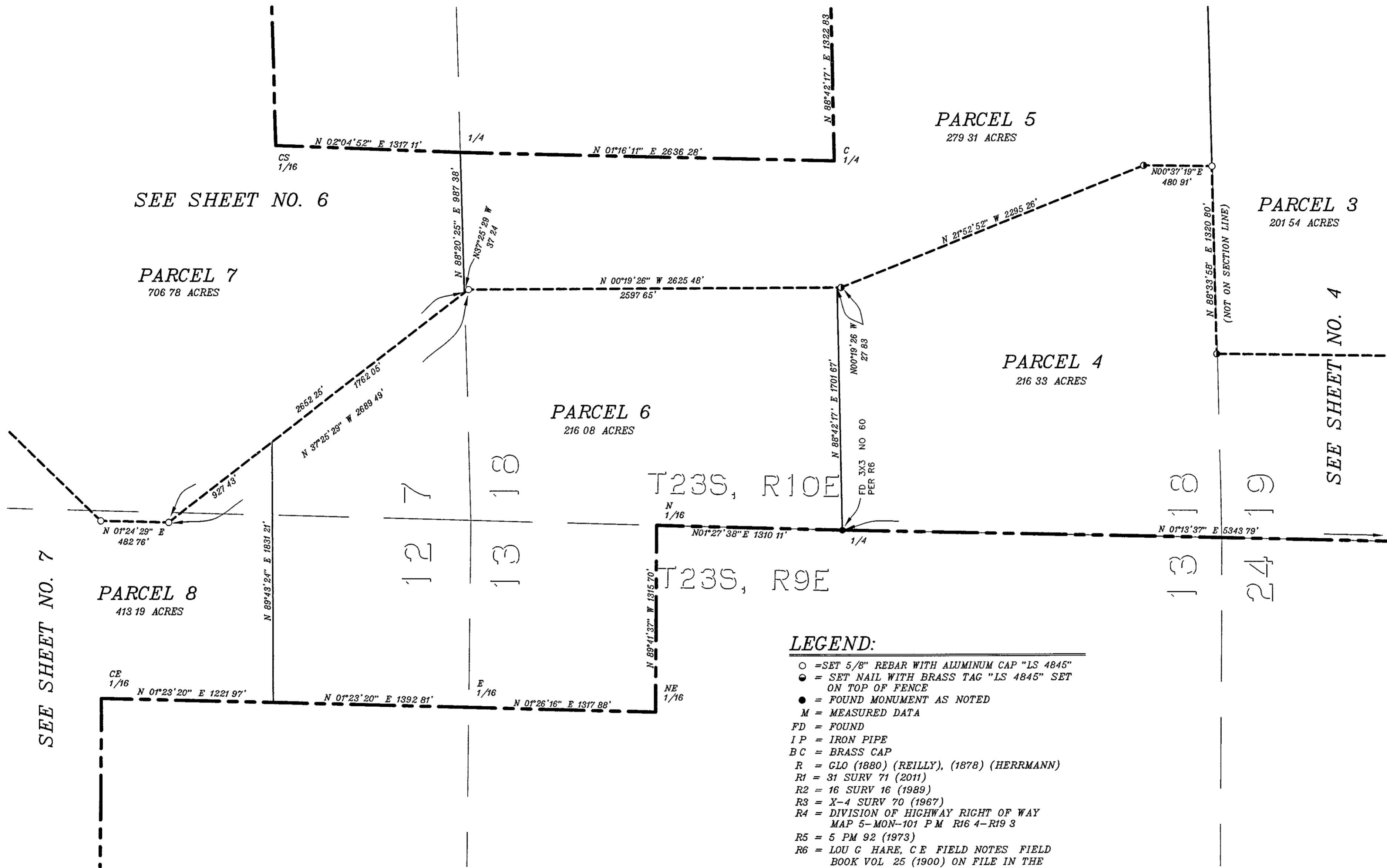
FD 1" IP W/ALUMINUM CAP STAMPED "LS 4845 S19,S20,S29,S30" PER R1

FD 1" IP W/ALUMINUM CAP STAMPED "LS 4845" PER R1

FD 1" IP W/ALUMINUM CAP STAMPED "LS 4845 1/4 S19,S30" PER R1

FD 2" IP WITH TAG STAMPED "LS 3626" PER R9

FD 4x4 (NO RECORD) ACCEPTED FOR SECTION CORNER

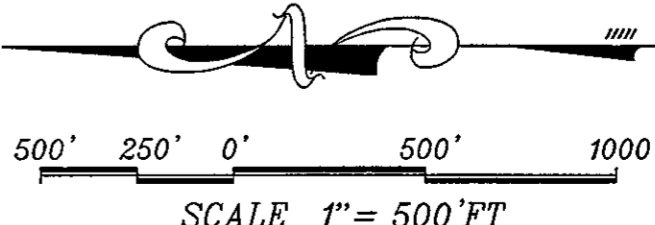


SEE SHEET NO. 7

SEE SHEET NO. 6

SEE SHEET NO. 4

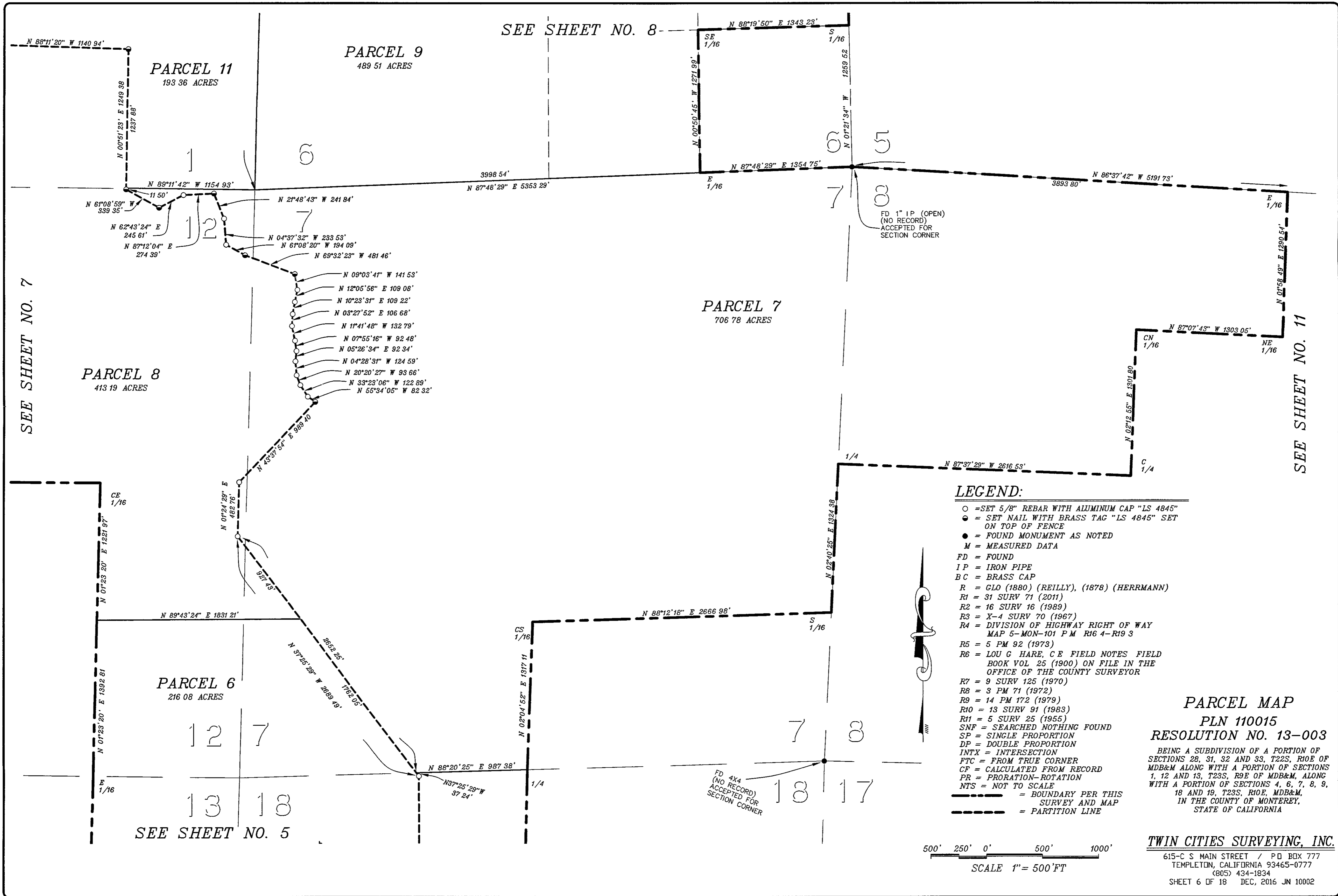
- LEGEND:**
- = SET 5/8" REBAR WITH ALUMINUM CAP "LS 4845"
 - = SET NAIL WITH BRASS TAG "LS 4845" SET ON TOP OF FENCE
 - = FOUND MONUMENT AS NOTED
 - M = MEASURED DATA
 - FD = FOUND
 - IP = IRON PIPE
 - BC = BRASS CAP
 - R = GLO (1880) (REILLY), (1878) (HERRMANN)
 - R1 = 31 SURV 71 (2011)
 - R2 = 16 SURV 16 (1989)
 - R3 = X-4 SURV 70 (1967)
 - R4 = DIVISION OF HIGHWAY RIGHT OF WAY MAP 5-MON-101 P.M R16 4-R19 3
 - R5 = 5 PM 92 (1973)
 - R6 = LOU G HARE, C E FIELD NOTES FIELD BOOK VOL 25 (1900) ON FILE IN THE OFFICE OF THE COUNTY SURVEYOR
 - R7 = 9 SURV 125 (1970)
 - R8 = 3 PM 71 (1972)
 - R9 = 14 PM 172 (1979)
 - R10 = 13 SURV 91 (1983)
 - R11 = 5 SURV 25 (1955)
 - SNF = SEARCHED NOTHING FOUND
 - SP = SINGLE PROPORTION
 - DP = DOUBLE PROPORTION
 - INTX = INTERSECTION
 - FTC = FROM TRUE CORNER
 - CF = CALCULATED FROM RECORD
 - PR = PRORATION-ROTATION
 - NTS = NOT TO SCALE
 - = BOUNDARY PER THIS SURVEY AND MAP
 - - - - - = PARTITION LINE



PARCEL MAP
PLN 110015
RESOLUTION NO. 13-003

BEING A SUBDIVISION OF A PORTION OF SECTIONS 28, 31, 32 AND 33, T23S, R10E OF MDB&M ALONG WITH A PORTION OF SECTIONS 1, 12 AND 13, T23S, R9E OF MDB&M, ALONG WITH A PORTION OF SECTIONS 4, 6, 7, 8, 9, 18 AND 19, T23S, R10E, MDB&M, IN THE COUNTY OF MONTEREY, STATE OF CALIFORNIA

TWIN CITIES SURVEYING, INC.
 615-C S MAIN STREET / P O BOX 777
 TEMPLETON, CALIFORNIA 93465-0777
 (805) 434-1834
 SHEET 5 OF 18 DEC, 2016 JN 10002



SEE SHEET NO. 8

SEE SHEET NO. 7

SEE SHEET NO. 11

PARCEL 11
193.36 ACRES

PARCEL 9
489.51 ACRES

PARCEL 7
706.78 ACRES

PARCEL 8
413.19 ACRES

PARCEL 6
216.08 ACRES

LEGEND:

- = SET 5/8" REBAR WITH ALUMINUM CAP "LS 4845"
- = SET NAIL WITH BRASS TAG "LS 4845" SET ON TOP OF FENCE
- = FOUND MONUMENT AS NOTED
- M = MEASURED DATA
- FD = FOUND
- IP = IRON PIPE
- BC = BRASS CAP
- R = GLO (1880) (REILLY), (1878) (HERRMANN)
- R1 = 31 SURV 71 (2011)
- R2 = 16 SURV 16 (1989)
- R3 = X-4 SURV 70 (1967)
- R4 = DIVISION OF HIGHWAY RIGHT OF WAY MAP 5-MON-101 P.M R16 4-R19 3
- R5 = 5 PM 92 (1973)
- R6 = LOU G HARE, C E FIELD NOTES FIELD BOOK VOL 25 (1900) ON FILE IN THE OFFICE OF THE COUNTY SURVEYOR
- R7 = 9 SURV 125 (1970)
- R8 = 3 PM 71 (1972)
- R9 = 14 PM 172 (1979)
- R10 = 13 SURV 91 (1983)
- R11 = 5 SURV 25 (1955)
- SNF = SEARCHED NOTHING FOUND
- SP = SINGLE PROPORTION
- DP = DOUBLE PROPORTION
- INTX = INTERSECTION
- FTC = FROM TRUE CORNER
- CF = CALCULATED FROM RECORD
- PR = PRORATION-ROTATION
- NTS = NOT TO SCALE
- = BOUNDARY PER THIS SURVEY AND MAP
- = PARTITION LINE

PARCEL MAP
PLN 110015
RESOLUTION NO. 13-003

BEING A SUBDIVISION OF A PORTION OF SECTIONS 28, 31, 32 AND 33, T22S, R10E OF MDB&M ALONG WITH A PORTION OF SECTIONS 1, 12 AND 13, T23S, R9E OF MDB&M, ALONG WITH A PORTION OF SECTIONS 4, 6, 7, 8, 9, 18 AND 19, T23S, R10E, MDB&M, IN THE COUNTY OF MONTEREY, STATE OF CALIFORNIA

TWIN CITIES SURVEYING, INC.

615-C S MAIN STREET / P.O. BOX 777
TEMPLETON, CALIFORNIA 93465-0777
(805) 434-1834
SHEET 6 OF 18 DEC, 2016 JN 10002

500' 250' 0' 500' 1000'
SCALE 1" = 500' FT

FD 4x4 (NO RECORD) ACCEPTED FOR SECTION CORNER

FD 1" IP (OPEN) (NO RECORD) ACCEPTED FOR SECTION CORNER

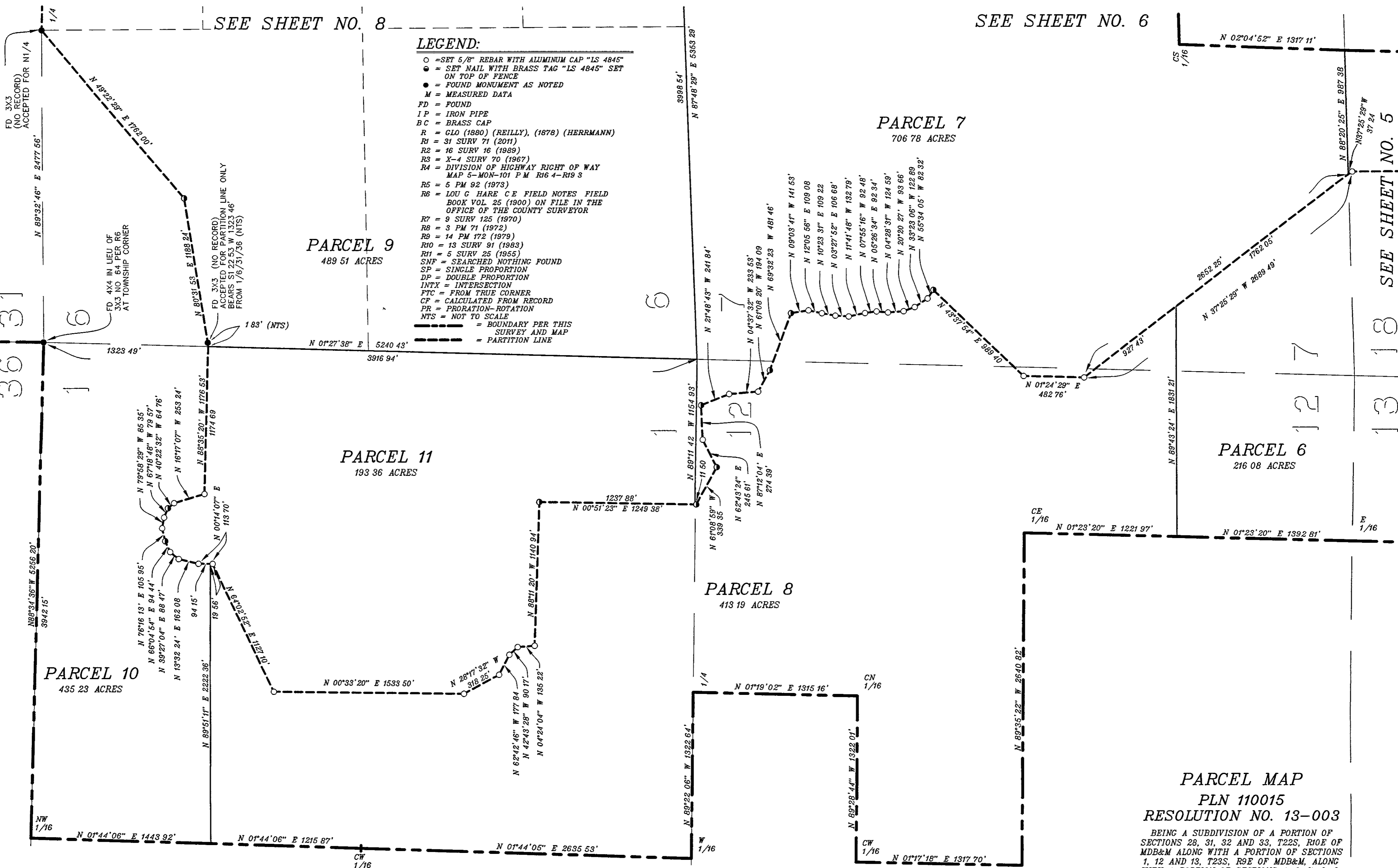
SEE SHEET NO. 9
T22S, R10E

SEE SHEET NO. 6

SEE SHEET NO. 5

T22S, R9E

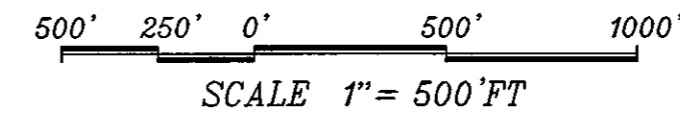
- LEGEND:**
- = SET 5/8" REBAR WITH ALUMINUM CAP "LS 4845"
 - = SET NAIL WITH BRASS TAG "LS 4845" SET ON TOP OF FENCE
 - = FOUND MONUMENT AS NOTED
 - M = MEASURED DATA
 - FD = FOUND
 - IP = IRON PIPE
 - BC = BRASS CAP
 - R = CLO (1880) (REILLY), (1878) (HERRMANN)
 - R1 = 31 SURV 71 (2011)
 - R2 = 16 SURV 16 (1989)
 - R3 = X-4 SURV 70 (1967)
 - R4 = DIVISION OF HIGHWAY RIGHT OF WAY MAP 5-MON-101 P M R16 4-R19 3
 - R5 = 5 PM 92 (1973)
 - R6 = LOU C HARE CE FIELD NOTES FIELD BOOK VOL 25 (1900) ON FILE IN THE OFFICE OF THE COUNTY SURVEYOR
 - R7 = 9 SURV 125 (1970)
 - R8 = 3 PM 71 (1972)
 - R9 = 14 PM 172 (1979)
 - R10 = 13 SURV 91 (1983)
 - R11 = 5 SURV 25 (1955)
 - SNF = SEARCHED NOTHING FOUND
 - SP = SINGLE PROPORTION
 - DP = DOUBLE PROPORTION
 - INTX = INTERSECTION
 - FTC = FROM TRUE CORNER
 - CF = CALCULATED FROM RECORD
 - PR = PROPORTION-ROTATION
 - NTS = NOT TO SCALE
- = BOUNDARY PER THIS SURVEY AND MAP
- - - = PARTITION LINE



PARCEL MAP
PLN 110015
RESOLUTION NO. 13-003

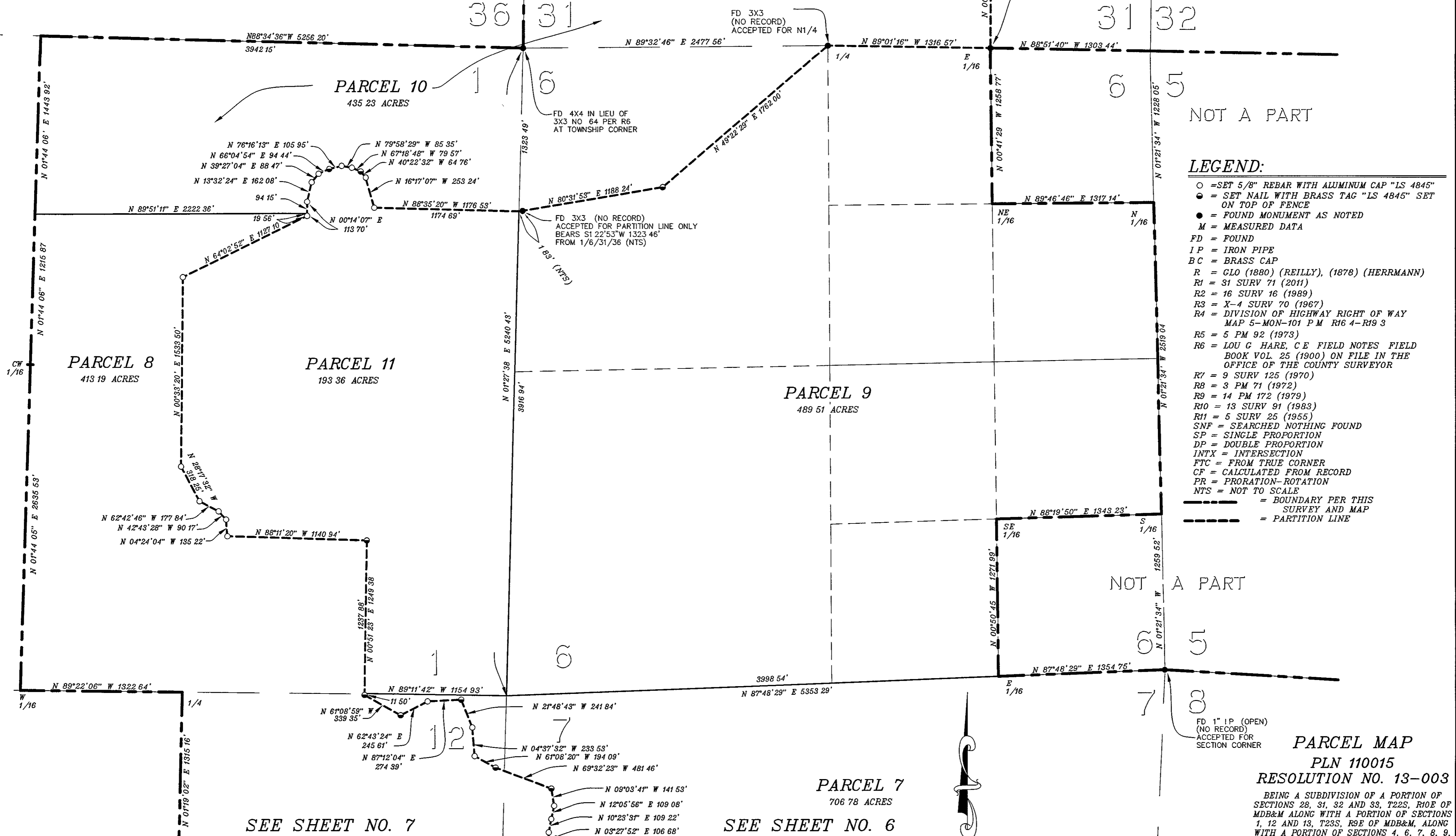
BEING A SUBDIVISION OF A PORTION OF SECTIONS 28, 31, 32 AND 33, T22S, R10E OF MDB&M ALONG WITH A PORTION OF SECTIONS 1, 12 AND 13, T22S, R9E OF MDB&M, ALONG WITH A PORTION OF SECTIONS 4, 6, 7, 8, 9, 18 AND 19, T22S, R10E, MDB&M, IN THE COUNTY OF MONTEREY, STATE OF CALIFORNIA

TWIN CITIES SURVEYING, INC.
 615-C S MAIN STREET / P.O. BOX 777
 TEMPLETON, CALIFORNIA 93465-0777
 (805) 434-1834
 SHEET 7 OF 18 DEC, 2016 JN 10002



T22S, R9E

T22S, R10E SEE SHEET NO. 9



NOT A PART

LEGEND:

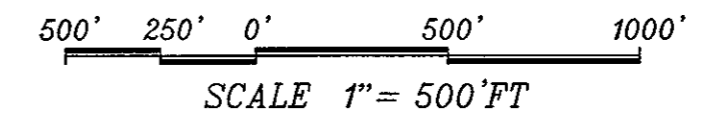
- = SET 5/8" REBAR WITH ALUMINUM CAP "LS 4845"
- = SET NAIL WITH BRASS TAG "LS 4845" SET ON TOP OF FENCE
- = FOUND MONUMENT AS NOTED
- M = MEASURED DATA
- FD = FOUND
- IP = IRON PIPE
- BC = BRASS CAP
- R = GLO (1880) (REILLY), (1878) (HERRMANN)
- R1 = 31 SURV 71 (2011)
- R2 = 16 SURV 16 (1989)
- R3 = X-4 SURV 70 (1967)
- R4 = DIVISION OF HIGHWAY RIGHT OF WAY MAP 5-MON-101 P.M. R16 4-R19 3
- R5 = 5 PM 92 (1973)
- R6 = LOU G HARE, C E FIELD NOTES FIELD BOOK VOL. 25 (1900) ON FILE IN THE OFFICE OF THE COUNTY SURVEYOR
- R7 = 9 SURV 125 (1970)
- R8 = 3 PM 71 (1972)
- R9 = 14 PM 172 (1979)
- R10 = 13 SURV 91 (1983)
- R11 = 5 SURV 25 (1955)
- SNF = SEARCHED NOTHING FOUND
- SP = SINGLE PROPORTION
- DP = DOUBLE PROPORTION
- INTX = INTERSECTION
- FTC = FROM TRUE CORNER
- CF = CALCULATED FROM RECORD
- PR = PRORATION-ROTATION
- NTS = NOT TO SCALE
- = BOUNDARY PER THIS SURVEY AND MAP
- - - = PARTITION LINE

NOT A PART

PARCEL MAP
PLN 110015
RESOLUTION NO. 13-003

BEING A SUBDIVISION OF A PORTION OF SECTIONS 28, 31, 32 AND 33, T22S, R10E OF MDB&M ALONG WITH A PORTION OF SECTIONS 1, 12 AND 13, T23S, R9E OF MDB&M, ALONG WITH A PORTION OF SECTIONS 4, 6, 7, 8, 9, 18 AND 19, T23S, R10E, MDB&M, IN THE COUNTY OF MONTEREY, STATE OF CALIFORNIA

TWIN CITIES SURVEYING, INC.
 615-C S MAIN STREET / P O BOX 777
 TEMPLETON, CALIFORNIA 93465-0777
 (805) 434-1834
 SHEET 8 OF 18 DEC, 2016 JN 10002



SEE SHEET NO. 7

SEE SHEET NO. 6

PARCEL MAP

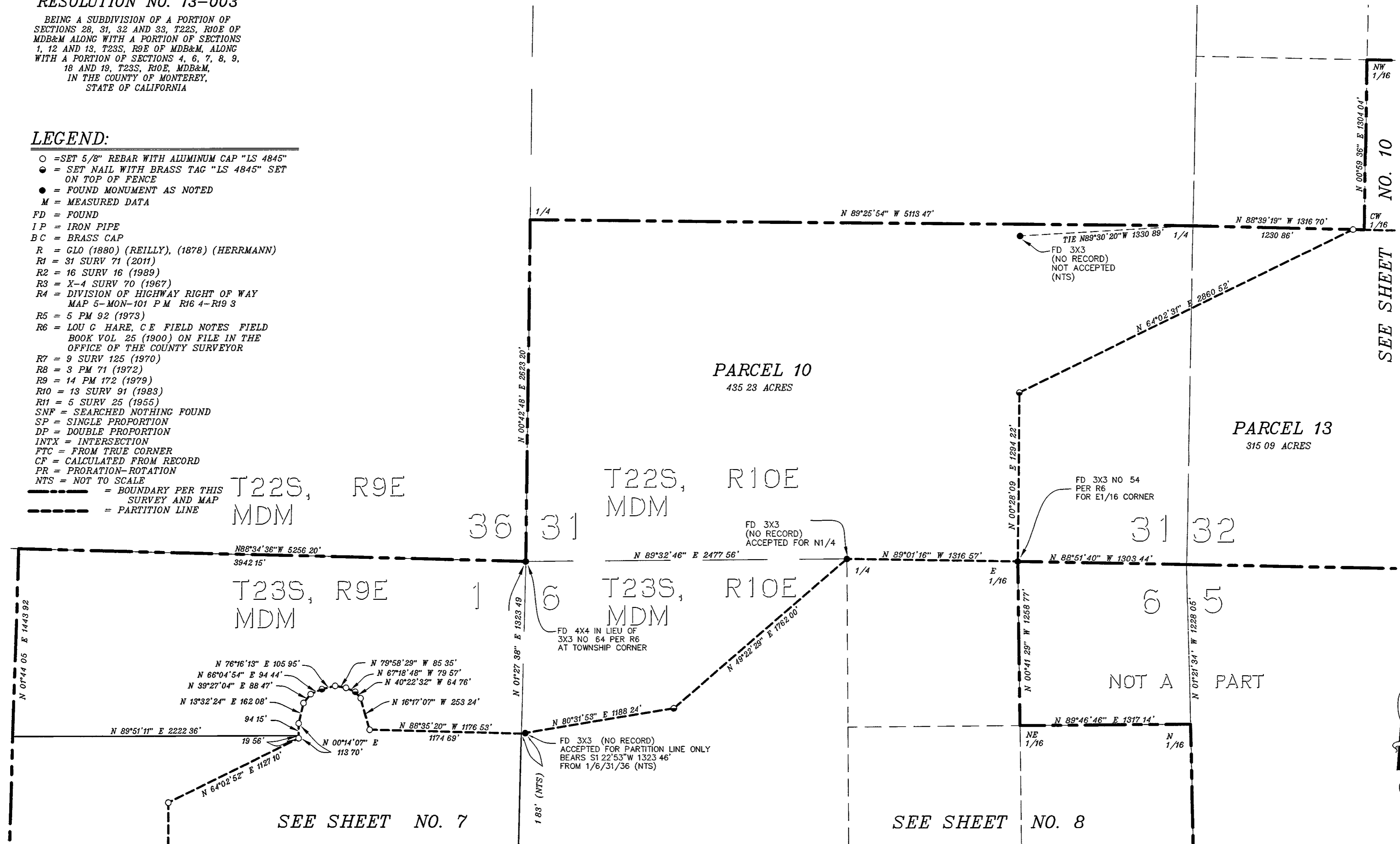
PLN 110015

RESOLUTION NO. 13-003

BEING A SUBDIVISION OF A PORTION OF SECTIONS 28, 31, 32 AND 33, T22S, R10E OF MDB&M ALONG WITH A PORTION OF SECTIONS 1, 12 AND 13, T23S, R9E OF MDB&M, ALONG WITH A PORTION OF SECTIONS 4, 6, 7, 8, 9, 18 AND 19, T23S, R10E, MDB&M, IN THE COUNTY OF MONTEREY, STATE OF CALIFORNIA

LEGEND:

- = SET 5/8" REBAR WITH ALUMINUM CAP "LS 4845"
- = SET NAIL WITH BRASS TAG "LS 4845" SET ON TOP OF FENCE
- = FOUND MONUMENT AS NOTED
- M = MEASURED DATA
- FD = FOUND
- IP = IRON PIPE
- BC = BRASS CAP
- R = GLO (1880) (REILLY), (1878) (HERRMANN)
- R1 = 31 SURV 71 (2011)
- R2 = 16 SURV 16 (1989)
- R3 = X-4 SURV 70 (1967)
- R4 = DIVISION OF HIGHWAY RIGHT OF WAY MAP 5-MON-101 P.M. R16 4-R19 3
- R5 = 5 PM 92 (1973)
- R6 = LOU G HARE, C E FIELD NOTES FIELD BOOK VOL 25 (1900) ON FILE IN THE OFFICE OF THE COUNTY SURVEYOR
- R7 = 9 SURV 125 (1970)
- R8 = 3 PM 71 (1972)
- R9 = 14 PM 172 (1979)
- R10 = 13 SURV 91 (1983)
- R11 = 5 SURV 25 (1955)
- SNF = SEARCHED NOTHING FOUND
- SP = SINGLE PROPORTION
- DP = DOUBLE PROPORTION
- INTX = INTERSECTION
- FTC = FROM TRUE CORNER
- CF = CALCULATED FROM RECORD
- PR = PRORATION-ROTATION
- NTS = NOT TO SCALE
- = BOUNDARY PER THIS SURVEY AND MAP
- - - = PARTITION LINE



SEE SHEET NO. 10

SEE SHEET NO. 7

SEE SHEET NO. 8

NOT A PART

500' 250' 0' 500' 1000'
SCALE 1" = 500' FT

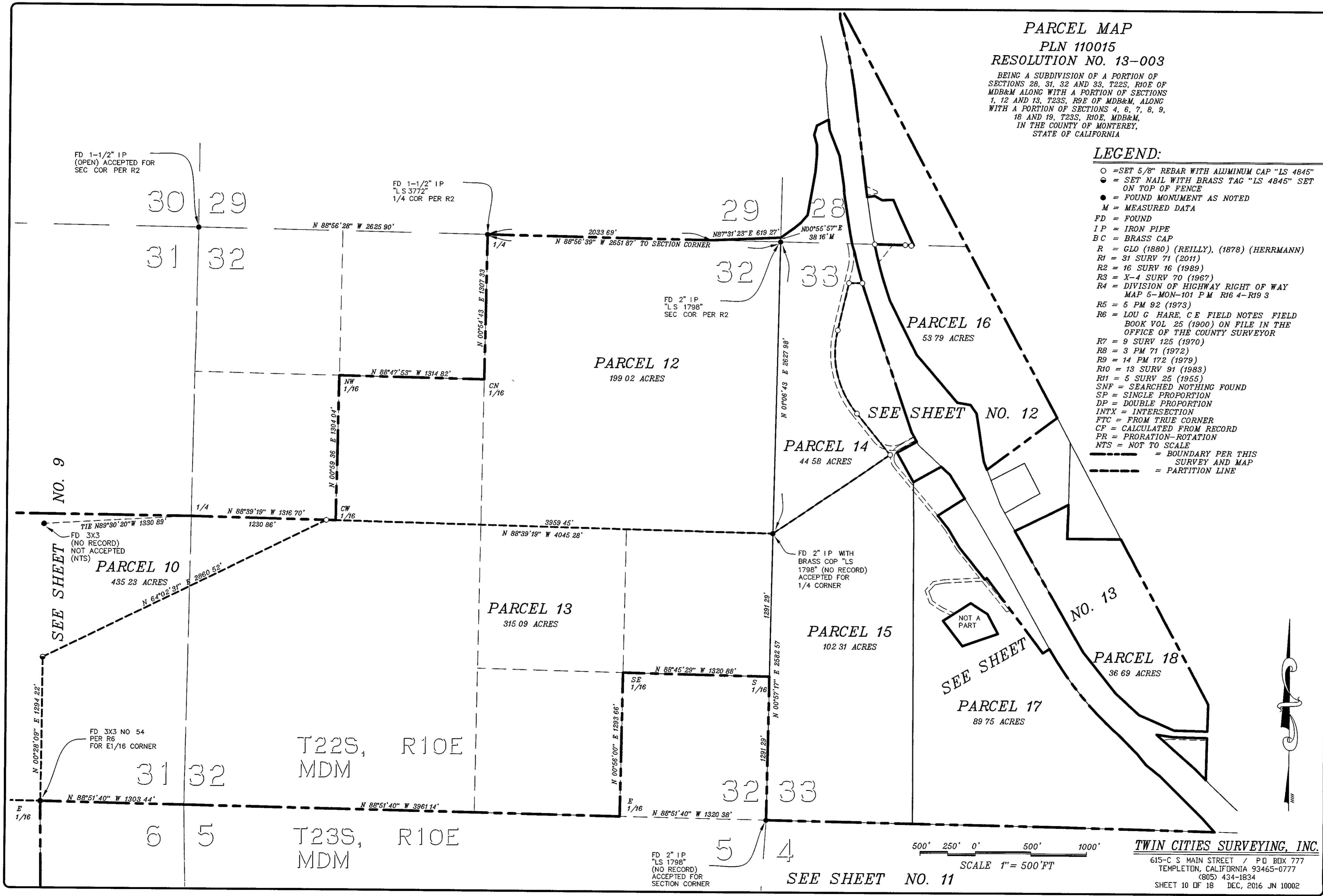
TWIN CITIES SURVEYING, INC.
615-C S MAIN STREET / P.O. BOX 777
TEMPLETON, CALIFORNIA 93465-0777
(805) 434-1834
SHEET 9 OF 18 DEC, 2016 JUN 10002

PARCEL MAP
PLN 110015
RESOLUTION NO. 13-003

BEING A SUBDIVISION OF A PORTION OF SECTIONS 28, 31, 32 AND 33, T22S, R10E OF MDB&M ALONG WITH A PORTION OF SECTIONS 1, 12 AND 13, T23S, R9E OF MDB&M, ALONG WITH A PORTION OF SECTIONS 4, 6, 7, 8, 9, 18 AND 19, T23S, R10E, MDB&M, IN THE COUNTY OF MONTEREY, STATE OF CALIFORNIA

LEGEND:

- = SET 5/8" REBAR WITH ALUMINUM CAP "LS 4845"
- = SET NAIL WITH BRASS TAG "LS 4845" SET ON TOP OF FENCE
- = FOUND MONUMENT AS NOTED
- M = MEASURED DATA
- FD = FOUND
- IP = IRON PIPE
- BC = BRASS CAP
- R = GLO (1880) (REILLY), (1878) (HERRMANN)
- R1 = 31 SURV 71 (2011)
- R2 = 16 SURV 16 (1989)
- R3 = X-4 SURV 70 (1967)
- R4 = DIVISION OF HIGHWAY RIGHT OF WAY MAP 5-MON-101 P M R16 4-R19 3
- R5 = 5 PM 92 (1973)
- R6 = LOU G HARE, C E FIELD NOTES FIELD BOOK VOL 25 (1900) ON FILE IN THE OFFICE OF THE COUNTY SURVEYOR
- R7 = 9 SURV 125 (1970)
- R8 = 3 PM 71 (1972)
- R9 = 14 PM 172 (1979)
- R10 = 13 SURV 91 (1983)
- R11 = 5 SURV 25 (1955)
- SNF = SEARCHED NOTHING FOUND
- SP = SINGLE PROPORTION
- DP = DOUBLE PROPORTION
- INTX = INTERSECTION
- FTC = FROM TRUE CORNER
- CF = CALCULATED FROM RECORD
- PR = PRORATION-ROTATION
- NTS = NOT TO SCALE
- = BOUNDARY PER THIS SURVEY AND MAP
- - - = PARTITION LINE



TWIN CITIES SURVEYING, INC.
 615-C S MAIN STREET / P O BOX 777
 TEMPLETON, CALIFORNIA 93465-0777
 (805) 434-1834
 SHEET 10 OF 18 DEC, 2016 JN 10002

SEE SHEET NO. 11

SCALE 1" = 500' FT

FD 2" IP
 "LS 1798"
 (NO RECORD)
 ACCEPTED FOR
 SECTION CORNER

FD 1-1/2" IP
 (OPEN) ACCEPTED FOR
 SEC COR PER R2

FD 1-1/2" IP
 "LS 3772"
 1/4 COR PER R2

FD 2" IP
 "LS 1798"
 SEC COR PER R2

FD 2" IP WITH
 BRASS COP "LS
 1798" (NO RECORD)
 ACCEPTED FOR
 1/4 CORNER

FD 3X3 NO 54
 PER R6
 FOR E1/16 CORNER

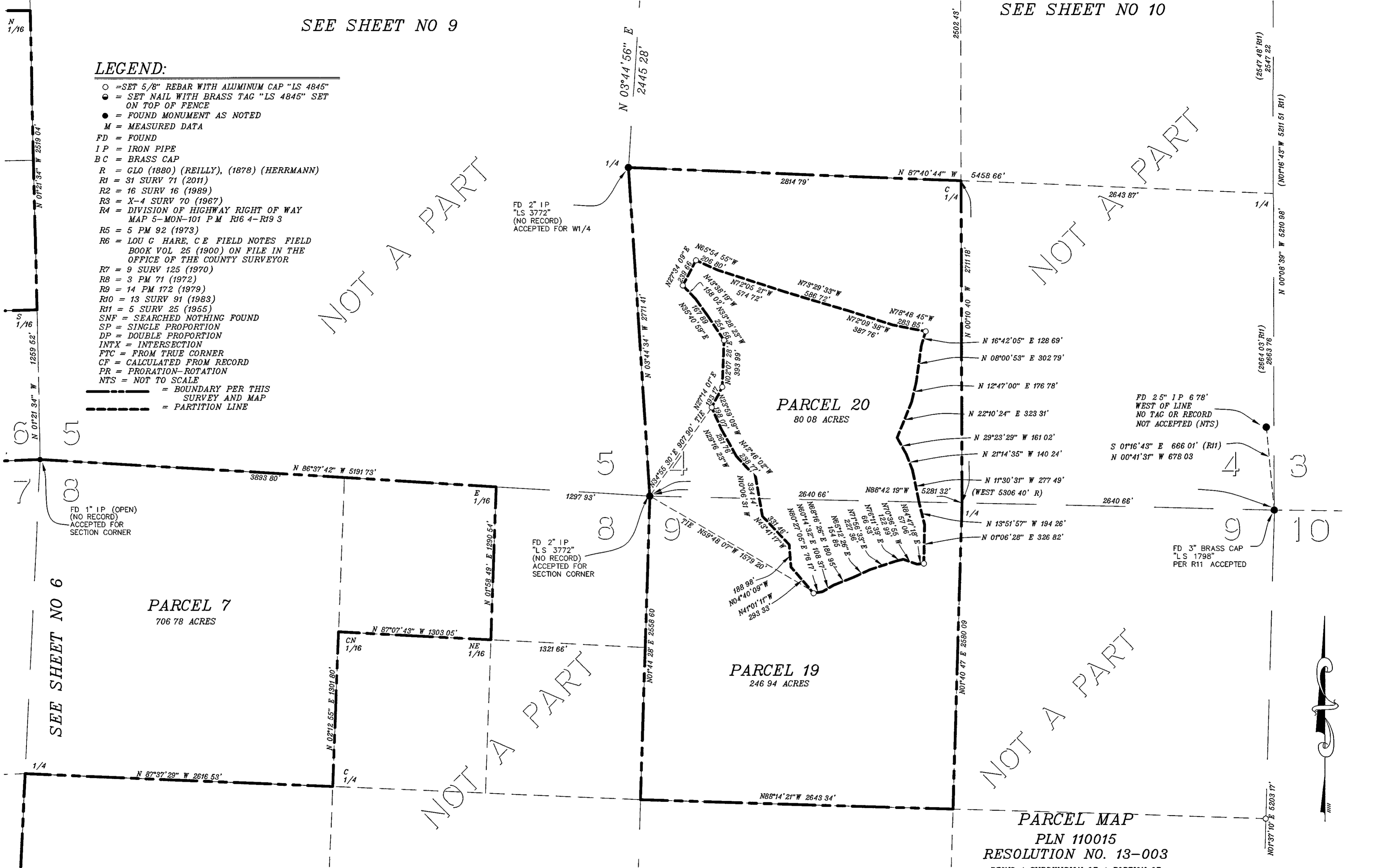
FD 3X3
 (NO RECORD)
 NOT ACCEPTED
 (NTS)

SEE SHEET NO 9

SEE SHEET NO 10

LEGEND:

- = SET 5/8" REBAR WITH ALUMINUM CAP "LS 4845"
- = SET NAIL WITH BRASS TAG "LS 4845" SET ON TOP OF FENCE
- = FOUND MONUMENT AS NOTED
- M = MEASURED DATA
- FD = FOUND
- IP = IRON PIPE
- BC = BRASS CAP
- R = GLO (1880) (REILLY), (1878) (HERRMANN)
- R1 = 31 SURV 71 (2011)
- R2 = 16 SURV 16 (1989)
- R3 = X-4 SURV 70 (1967)
- R4 = DIVISION OF HIGHWAY RIGHT OF WAY MAP 5-MON-101 P.M R16 4-R19 3
- R5 = 5 PM 92 (1973)
- R6 = LOU G HARE, C.E FIELD NOTES FIELD BOOK VOL 25 (1900) ON FILE IN THE OFFICE OF THE COUNTY SURVEYOR
- R7 = 9 SURV 125 (1970)
- R8 = 3 PM 71 (1972)
- R9 = 14 PM 172 (1979)
- R10 = 13 SURV 91 (1983)
- R11 = 5 SURV 25 (1955)
- SNF = SEARCHED NOTHING FOUND
- SP = SINGLE PROPORTION
- DP = DOUBLE PROPORTION
- INTX = INTERSECTION
- FTC = FROM TRUE CORNER
- CF = CALCULATED FROM RECORD
- PR = PRORATION-ROTATION
- NTS = NOT TO SCALE
- = BOUNDARY PER THIS SURVEY AND MAP
- - - - - = PARTITION LINE



SEE SHEET NO 6

PARCEL 7
706.78 ACRES

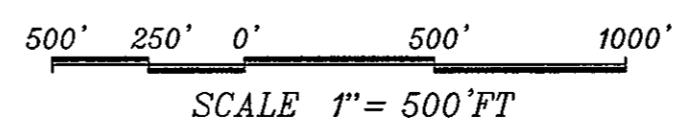
PARCEL 19
246.94 ACRES

PARCEL 20
80.08 ACRES

PARCEL MAP
PLN 110015
RESOLUTION NO. 13-003

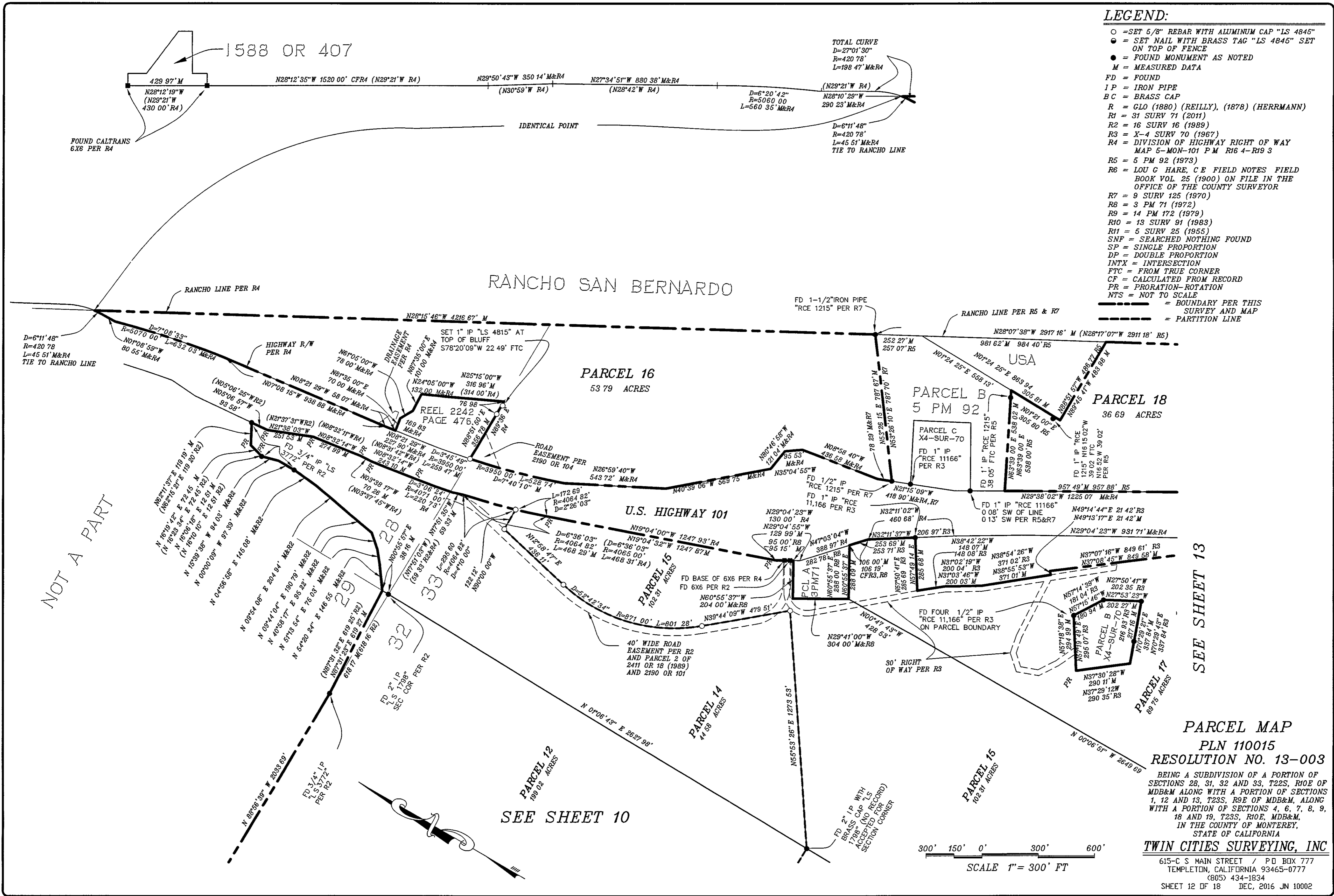
BEING A SUBDIVISION OF A PORTION OF SECTIONS 28, 31, 32 AND 33, T22S, R10E OF MDB&M ALONG WITH A PORTION OF SECTIONS 1, 12 AND 13, T23S, R9E OF MDB&M, ALONG WITH A PORTION OF SECTIONS 4, 6, 7, 8, 9, 18 AND 19, T23S, R10E, MDB&M, IN THE COUNTY OF MONTEREY, STATE OF CALIFORNIA

TWIN CITIES SURVEYING, INC.
 615-C S MAIN STREET / P.O. BOX 777
 TEMPLETON, CALIFORNIA 93465-0777
 (805) 434-1834
 SHEET 11 OF 18 DEC, 2016 JN 10002



LEGEND:

- = SET 5/8" REBAR WITH ALUMINUM CAP "LS 4845"
- = SET NAIL WITH BRASS TAG "LS 4845" SET ON TOP OF FENCE
- = FOUND MONUMENT AS NOTED
- M = MEASURED DATA
- FD = FOUND
- IP = IRON PIPE
- BC = BRASS CAP
- R = GLO (1880) (REILLY), (1878) (HERRMANN)
- R1 = 31 SURV 71 (2011)
- R2 = 16 SURV 16 (1989)
- R3 = X-4 SURV 70 (1967)
- R4 = DIVISION OF HIGHWAY RIGHT OF WAY MAP 5-MON-101 P M R16 4-R19 3
- R5 = 5 PM 92 (1973)
- R6 = LOU C HARE, C E FIELD NOTES FIELD BOOK VOL. 25 (1900) ON FILE IN THE OFFICE OF THE COUNTY SURVEYOR
- R7 = 9 SURV 125 (1970)
- R8 = 3 PM 71 (1972)
- R9 = 14 PM 172 (1979)
- R10 = 13 SURV 91 (1983)
- R11 = 5 SURV 25 (1955)
- SNF = SEARCHED NOTHING FOUND
- SP = SINGLE PROPORTION
- DP = DOUBLE PROPORTION
- INTX = INTERSECTION
- FTC = FROM TRUE CORNER
- CF = CALCULATED FROM RECORD
- PR = PRORATION-ROTATION
- NTS = NOT TO SCALE
- = BOUNDARY PER THIS SURVEY AND MAP
- - - - - = PARTITION LINE



NOT A PART

SEE SHEET 13

SEE SHEET 10

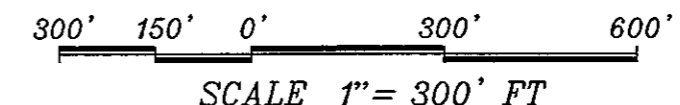
PARCEL MAP
PLN 110015
RESOLUTION NO. 13-003

BEING A SUBDIVISION OF A PORTION OF SECTIONS 28, 31, 32 AND 33, T22S, R10E OF MDB&M ALONG WITH A PORTION OF SECTIONS 1, 12 AND 13, T23S, R9E OF MDB&M, ALONG WITH A PORTION OF SECTIONS 4, 6, 7, 8, 9, 18 AND 19, T23S, R10E, MDB&M, IN THE COUNTY OF MONTEREY, STATE OF CALIFORNIA

TWIN CITIES SURVEYING, INC

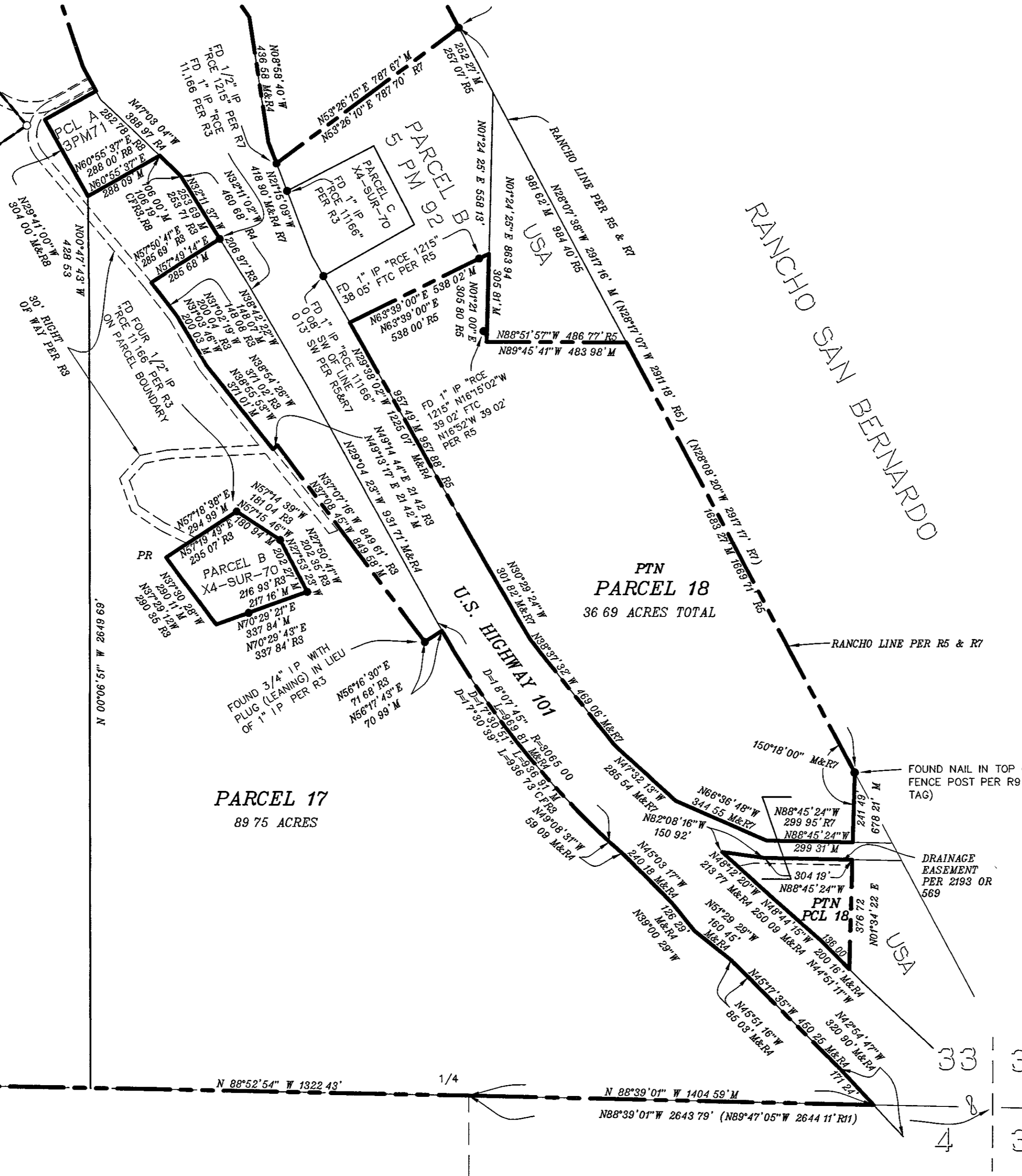
615-C S MAIN STREET / P O BOX 777
 TEMPLETON, CALIFORNIA 93465-0777
 (805) 434-1834

SHEET 12 OF 18 DEC, 2016 JN 10002



SEE SHEET 12

PARCEL 14
44.58 ACRES



LEGEND:

- = SET 5/8" REBAR WITH ALUMINUM CAP "LS 4845"
- = SET NAIL WITH BRASS TAG "LS 4845" SET ON TOP OF FENCE
- = FOUND MONUMENT AS NOTED
- M = MEASURED DATA
- FD = FOUND
- IP = IRON PIPE
- BC = BRASS CAP
- R = GLO (1880) (REILLY), (1878) (HERRMANN)
- R1 = 31 SURV 71 (2011)
- R2 = 16 SURV 16 (1989)
- R3 = X-4 SURV 70 (1967)
- R4 = DIVISION OF HIGHWAY RIGHT OF WAY MAP 5-MON-101 P.M. R16 4-R19 3
- R5 = 5 PM 92 (1973)
- R6 = LOU G HARE, C E FIELD NOTES FIELD BOOK VOL 25 (1900) ON FILE IN THE OFFICE OF THE COUNTY SURVEYOR
- R7 = 9 SURV 125 (1970)
- R8 = 3 PM 71 (1972)
- R9 = 14 PM 172 (1979)
- R10 = 13 SURV 91 (1983)
- R11 = 5 SURV 25 (1955)
- SNF = SEARCHED NOTHING FOUND
- SP = SINGLE PROPORTION
- DP = DOUBLE PROPORTION
- INTX = INTERSECTION
- FTC = FROM TRUE CORNER
- CF = CALCULATED FROM RECORD
- PR = PRORATION-ROTATION
- NTS = NOT TO SCALE
- = BOUNDARY PER THIS SURVEY AND MAP
- = PARTITION LINE

SEE SHEET 10

PARCEL 15
102.31 ACRES

PARCEL 17
89.75 ACRES

PTN
PARCEL 18
36.69 ACRES TOTAL

PARCEL MAP
PLN 110015
RESOLUTION NO. 13-003

BEING A SUBDIVISION OF A PORTION OF SECTIONS 28, 31, 32 AND 33, T22S, R10E OF MDB&M ALONG WITH A PORTION OF SECTIONS 1, 12 AND 13, T23S, R9E OF MDB&M, ALONG WITH A PORTION OF SECTIONS 4, 6, 7, 8, 9, 18 AND 19, T23S, R10E, MDB&M, IN THE COUNTY OF MONTEREY, STATE OF CALIFORNIA

TWIN CITIES SURVEYING, INC.
 615-C S MAIN STREET / P.O. BOX 777
 TEMPLETON, CALIFORNIA 93465-0777
 (805) 434-1834
 SHEET 13 OF 18 DEC, 2016 JUN 10002

SEE SHEET 11

300' 150' 0' 300' 600'
 SCALE 1" = 300' FT



SEE SHEET NO. 15

BASIS OF BEARING

THE "BASIS OF BEARING" FOR THIS MAP & SURVEY IS GRID NORTH PER CALIFORNIA COORDINATE SYSTEM "CCS83-ZONE 4" THE CONVERGENCE ANGLE AT THE CORNER OF SECTIONS 19/20/29/30 IS -1°08'48"

ALL DISTANCES SHOWN, THAT ARE NOT IN (), ARE MEASURED GRID DISTANCES TO OBTAIN GROUND DISTANCES, MULTIPLY GRID DISTANCES BY 1.000015679

ALL DISTANCES ARE IN TERMS OF THE U S SURVEY FOOT AND DECIMALS THEREOF

LEGEND:

- = SET 5/8" REBAR WITH ALUMINUM CAP "LS 4845"
- = SET NAIL WITH BRASS TAG "LS 4845" SET ON TOP OF FENCE
- = FOUND MONUMENT AS NOTED
- M = MEASURED DATA
- FD = FOUND
- I P = IRON PIPE
- BC = BRASS CAP
- R = CLO (1880) (REILLY), (1878) (HERRMANN)
- R1 = 31 SURV 71 (2011)
- R2 = 16 SURV 16 (1989)
- R3 = X-4 SURV 70 (1967)
- R4 = DIVISION OF HIGHWAY RIGHT OF WAY MAP 5-MON-101 P M R16 4-R19 3
- R5 = 5 PM 92 (1973)
- R6 = LOU G HARE, C E FIELD NOTES FIELD BOOK VOL 25 (1900) ON FILE IN THE OFFICE OF THE COUNTY SURVEYOR
- R7 = 9 SURV 125 (1970)
- R8 = 3 PM 71 (1972)
- R9 = 14 PM 172 (1979)
- R10 = 13 SURV 91 (1983)
- R11 = 5 SURV 25 (1955)
- SNF = SEARCHED NOTHING FOUND
- SP = SINGLE PROPORTION
- DP = DOUBLE PROPORTION
- INTX = INTERSECTION
- FTC = FROM TRUE CORNER
- CF = CALCULATED FROM RECORD
- PR = PRORATION-ROTATION
- NTS = NOT TO SCALE
- = BOUNDARY PER THIS SURVEY AND MAP
- - - - - = PARTITION LINE

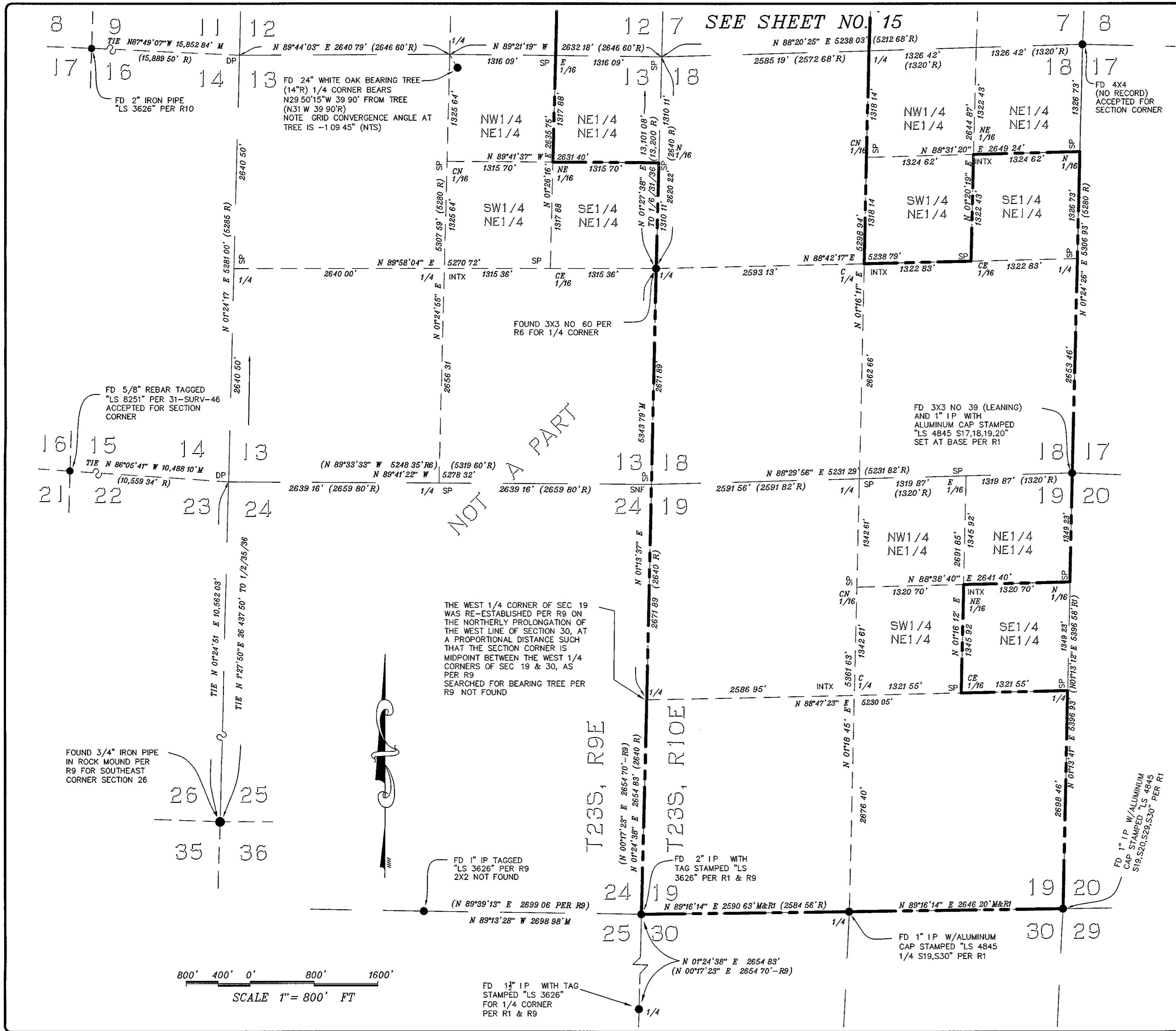
NOTE (REGARDING DOUBLE PROPORTION CALCULATIONS)
 PRIOR TO CALCULATING THE LATITUDE AND DEPARTURE COMPONENTS BETWEEN THE FOUND CONTROLLING MONUMENTS USED FOR THE DOUBLE PROPORTION SOLUTIONS SHOWN HEREON, THE GRID-BASED COORDINATE SYSTEM USED FOR THIS MAP AND SURVEY WAS ROTATED TO AN ASTRONOMIC BASIS OF BEARINGS BY APPLYING THE CONVERGENCE ANGLE FACTOR CALCULATED AT THE LOCATION OF THE FOUND MONUMENT AT 25/26/35/36 (-1°10'05") THE DOUBLE PROPORTION SOLUTION WAS THEN UN-ROTATED BACK TO THE ORIGINAL GRID COORDINATE SYSTEM (CCS83-IV) AS SHOWN HEREON

PARCEL MAP
 PLN 110015
 RESOLUTION NO. 13-003

BEING A SUBDIVISION OF A PORTION OF SECTIONS 28, 31, 32 AND 33, T22S, R10E OF MDB&M ALONG WITH A PORTION OF SECTIONS 1, 12 AND 13, T23S, R9E OF MDB&M, ALONG WITH A PORTION OF SECTIONS 4, 6, 7, 8, 9, 18 AND 19, T23S, R10E, MDB&M, IN THE COUNTY OF MONTEREY, STATE OF CALIFORNIA

TWIN CITIES SURVEYING, INC.

615-C S MAIN STREET / P O BOX 777
 TEMPLETON, CALIFORNIA 93465-0777
 (805) 434-1834
 SHEET 14 OF 18 DEC, 2016 JN 10002

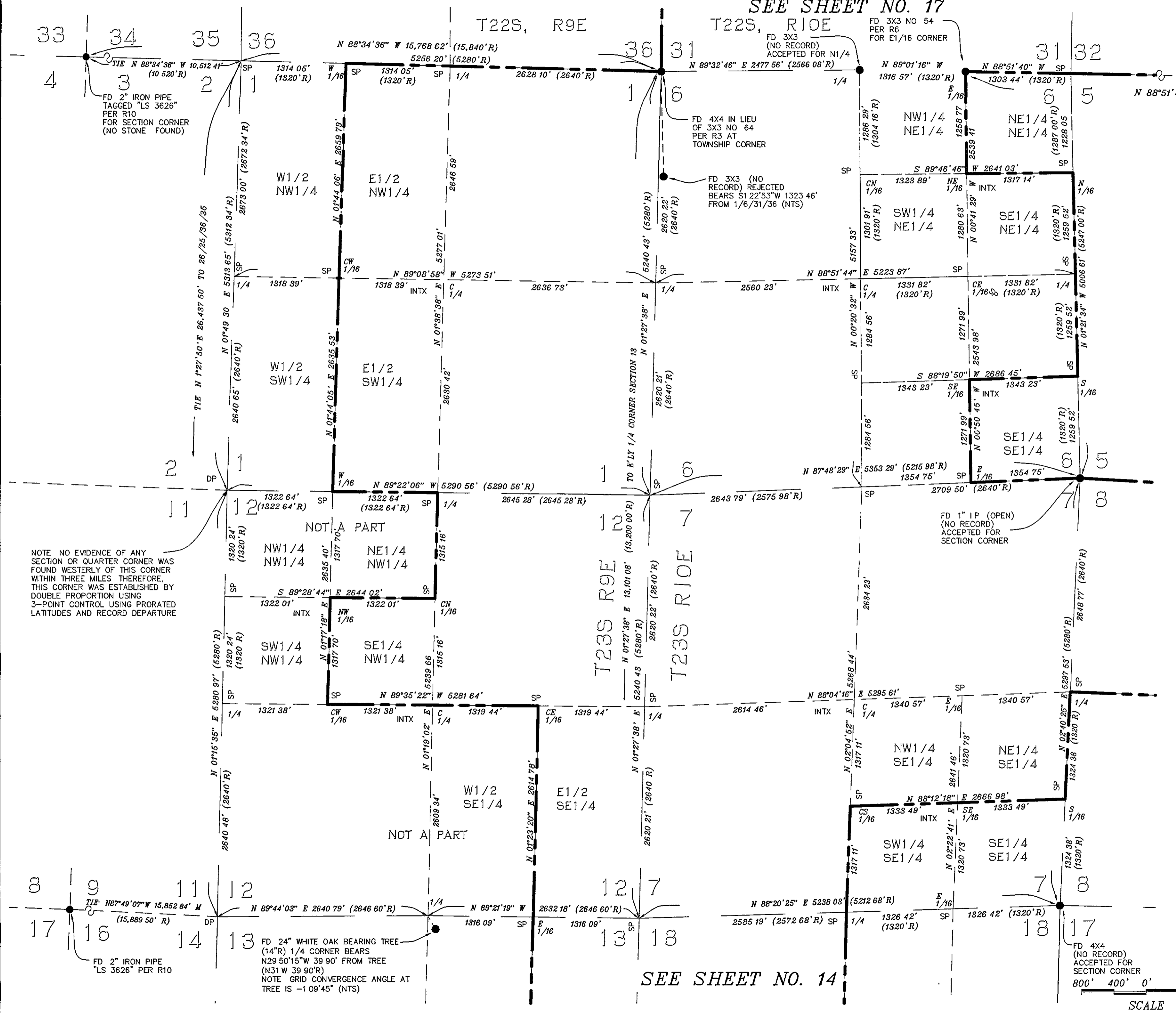


SCALE 1" = 800' FT

SEE SHEET NO. 17

T22S, R9E T22S, R10E

FD 2" BRASS CAP "LS 1798" (NO RECORD) ACCEPTED FOR SECTION CORNER



BASIS OF BEARING

THE "BASIS OF BEARING" FOR THIS MAP & SURVEY IS GRID NORTH PER CALIFORNIA COORDINATE SYSTEM "CCS83-ZONE 4" THE CONVERGENCE ANGLE AT THE CORNER OF SECTIONS 19/20/29/30 IS -1°08'48"

ALL DISTANCES SHOWN, THAT ARE NOT IN (), ARE MEASURED GRID DISTANCES TO OBTAIN GROUND DISTANCES, MULTIPLY GRID DISTANCES BY 1.000015679

ALL DISTANCES ARE IN TERMS OF THE U S SURVEY FOOT AND DECIMALS THEREOF

LEGEND:

- = SET 5/8" REBAR WITH ALUMINUM CAP "LS 4845"
- = SET NAIL WITH BRASS TAG "LS 4845" SET ON TOP OF FENCE
- = FOUND MONUMENT AS NOTED
- M = MEASURED DATA
- FD = FOUND
- IP = IRON PIPE
- BC = BRASS CAP
- R = GLO (1880) (REILLY), (1878) (HERRMANN)
- R1 = 31 SURV 71 (2011)
- R2 = 16 SURV 16 (1989)
- R3 = X-4 SURV 70 (1967)
- R4 = DIVISION OF HIGHWAY RIGHT OF WAY MAP 5-MON-101 P.M. R16 4-R19 3
- R5 = 5 PM 92 (1973)
- R6 = LOU G HARE, C.E. FIELD NOTES FIELD BOOK VOL 25 (1900) ON FILE IN THE OFFICE OF THE COUNTY SURVEYOR
- R7 = 9 SURV 125 (1970)
- R8 = 3 PM 71 (1972)
- R9 = 14 PM 172 (1979)
- R10 = 13 SURV 91 (1983)
- R11 = 5 SURV 25 (1955)
- SNF = SEARCHED NOTHING FOUND
- SP = SINGLE PROPORTION
- DP = DOUBLE PROPORTION
- INTX = INTERSECTION
- PTC = FROM TRUE CORNER
- CP = CALCULATED FROM RECORD
- PR = PRORATION-ROTATION
- NTS = NOT TO SCALE
- = BOUNDARY PER THIS SURVEY AND MAP
- = PARTITION LINE

SEE SHEET NO. 16

NOTE: NO EVIDENCE OF ANY SECTION OR QUARTER CORNER WAS FOUND WESTERLY OF THIS CORNER WITHIN THREE MILES THEREFORE, THIS CORNER WAS ESTABLISHED BY DOUBLE PROPORTION USING 3-POINT CONTROL USING PRORATED LATITUDES AND RECORD DEPARTURE

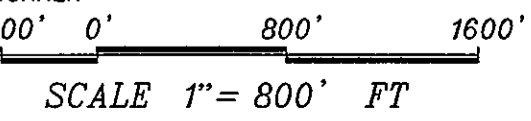
NOTE (REGARDING DOUBLE PROPORTION CALCULATIONS) PRIOR TO CALCULATING THE LATITUDE AND DEPARTURE COMPONENTS BETWEEN THE FOUND CONTROLLING MONUMENTS USED FOR THE DOUBLE PROPORTION SOLUTIONS SHOWN HEREON, THE GRID-BASED COORDINATE SYSTEM USED FOR THIS MAP AND SURVEY WAS ROTATED TO AN ASTRONOMIC BASIS OF BEARINGS BY APPLYING THE CONVERGENCE ANGLE FACTOR CALCULATED AT THE LOCATION OF THE FOUND MONUMENT AT 25/26/35/36 (-1°10'05") THE DOUBLE PROPORTION SOLUTION WAS THEN UN-ROTATED BACK TO THE ORIGINAL GRID COORDINATE SYSTEM (CCS83-IV) AS SHOWN HEREON

**PARCEL MAP
PLN 110015
RESOLUTION NO 13-003**

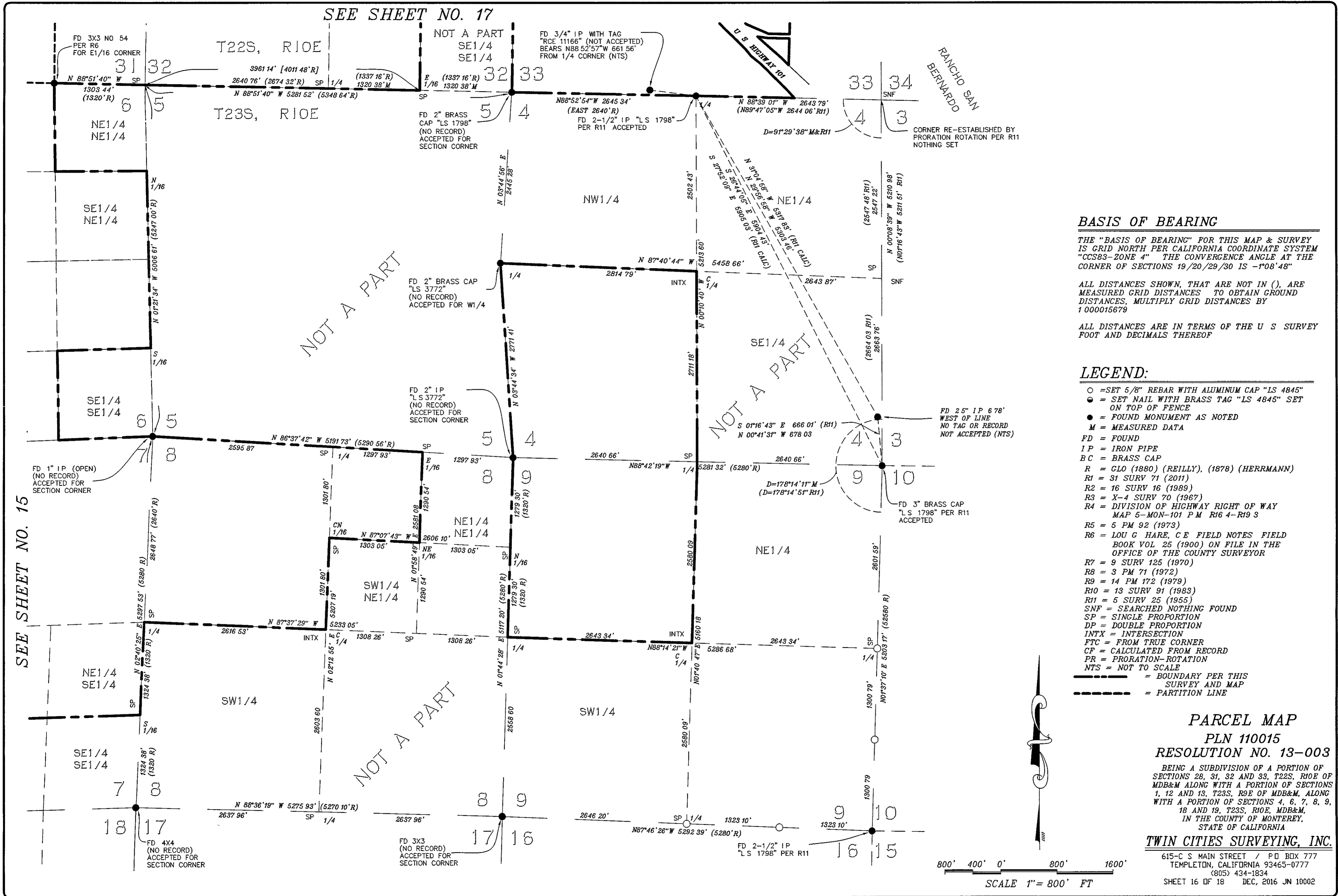
BEING A SUBDIVISION OF A PORTION OF SECTIONS 28, 31, 32 AND 33, T22S, R10E OF MDB&M ALONG WITH A PORTION OF SECTIONS 1, 12 AND 13, T23S, R9E OF MDB&M, ALONG WITH A PORTION OF SECTIONS 4, 6, 7, 8, 9, 18 AND 19, T23S, R10E, MDB&M, IN THE COUNTY OF MONTEREY, STATE OF CALIFORNIA

TWIN CITIES SURVEYING, INC.

615-C S MAIN STREET / PO BOX 777
TEMPLETON, CALIFORNIA 93465-0777
(805) 434-1834
SHEET 15 OF 18 DEC, 2016 JN 10002



SEE SHEET NO. 14



BASIS OF BEARING

THE "BASIS OF BEARING" FOR THIS MAP & SURVEY IS GRID NORTH, PER CALIFORNIA COORDINATE SYSTEM "CCS83-ZONE 4" THE CONVERGENCE ANGLE AT THE CORNER OF SECTIONS 19/20/29/30 IS -1°08'48"

ALL DISTANCES SHOWN, THAT ARE NOT IN (), ARE MEASURED GRID DISTANCES TO OBTAIN GROUND DISTANCES, MULTIPLY GRID DISTANCES BY 1.000015679

ALL DISTANCES ARE IN TERMS OF THE U S SURVEY FOOT AND DECIMALS THEREOF

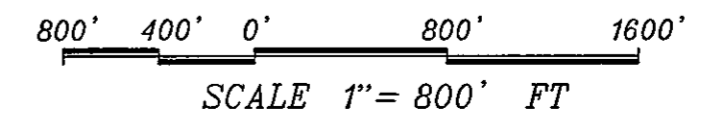
LEGEND:

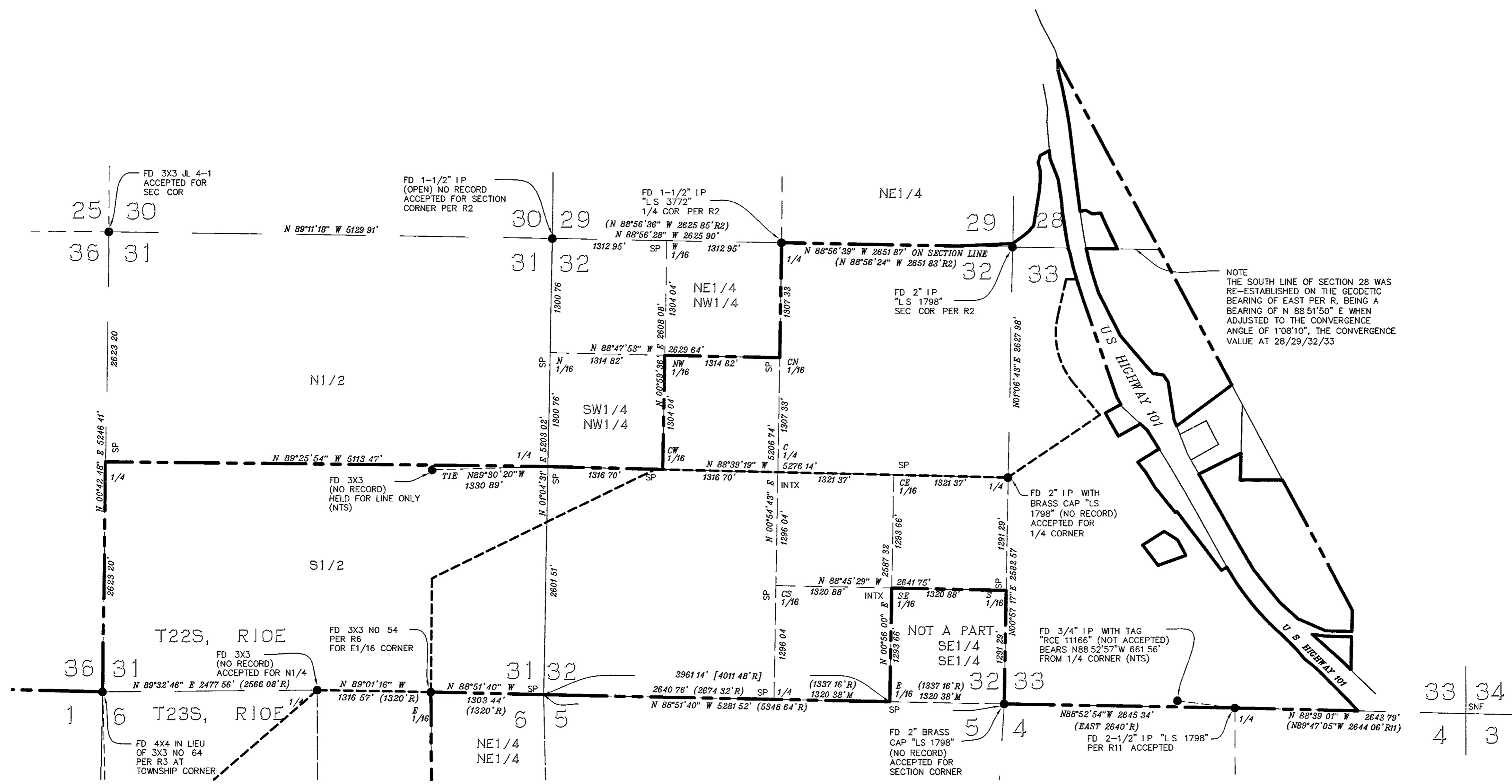
- = SET 5/8" REBAR WITH ALUMINUM CAP "LS 4845"
- = SET NAIL WITH BRASS TAG "LS 4845" SET ON TOP OF FENCE
- = FOUND MONUMENT AS NOTED
- M = MEASURED DATA
- FD = FOUND
- IP = IRON PIPE
- BC = BRASS CAP
- R = CLO (1880) (REILLY), (1878) (HERMANN)
- R1 = 31 SURV 71 (2011)
- R2 = 16 SURV 16 (1989)
- R3 = X-4 SURV 70 (1967)
- R4 = DIVISION OF HIGHWAY RIGHT OF WAY MAP 5-MON-101 P.M. R16 4-R19 3
- R5 = 5 PM 92 (1973)
- R6 = LOU G HARE, C.E. FIELD NOTES FIELD BOOK VOL 25 (1900) ON FILE IN THE OFFICE OF THE COUNTY SURVEYOR
- R7 = 9 SURV 125 (1970)
- R8 = 3 PM 71 (1972)
- R9 = 14 PM 172 (1979)
- R10 = 13 SURV 91 (1983)
- R11 = 5 SURV 25 (1955)
- SNF = SEARCHED NOTHING FOUND
- SP = SINGLE PROPORTION
- DP = DOUBLE PROPORTION
- INTX = INTERSECTION
- FTC = FROM TRUE CORNER
- CF = CALCULATED FROM RECORD
- PR = PRORATION-ROTATION
- NTS = NOT TO SCALE
- = BOUNDARY PER THIS SURVEY AND MAP
- = PARTITION LINE

**PARCEL MAP
PLN 110015
RESOLUTION NO. 13-003**

BEING A SUBDIVISION OF A PORTION OF SECTIONS 28, 31, 32 AND 33, T22S, R10E OF MDB&M ALONG WITH A PORTION OF SECTIONS 1, 12 AND 13, T23S, R10E OF MDB&M, ALONG WITH A PORTION OF SECTIONS 4, 6, 7, 8, 9, 18 AND 19, T23S, R10E, MDB&M, IN THE COUNTY OF MONTEREY, STATE OF CALIFORNIA

TWIN CITIES SURVEYING, INC.
615-C S MAIN STREET / P.O. BOX 777
TEMPLETON, CALIFORNIA 93465-0777
(805) 434-1834
SHEET 16 OF 18 DEC, 2016 JN 10002





NOTE
THE SOUTH LINE OF SECTION 28 WAS RE-ESTABLISHED ON THE GEODETIC BEARING OF EAST PER R, BEING A BEARING OF N 88°51'50\"/>

SEE SHEET NO. 15

SEE SHEET NO. 16

BASIS OF BEARING

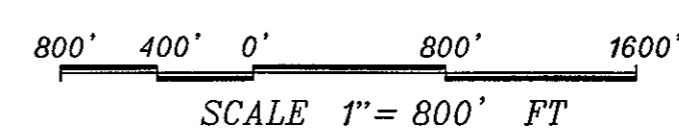
THE "BASIS OF BEARING" FOR THIS MAP & SURVEY IS GRID NORTH PER CALIFORNIA COORDINATE SYSTEM "CCS83-ZONE 4" THE CONVERGENCE ANGLE AT THE CORNER OF SECTIONS 19/20/29/30 IS -1°08'48"

ALL DISTANCES SHOWN, THAT ARE NOT IN (), ARE MEASURED GRID DISTANCES TO OBTAIN GROUND DISTANCES, MULTIPLY GRID DISTANCES BY 1.000015679

ALL DISTANCES ARE IN TERMS OF THE U S SURVEY FOOT AND DECIMALS THEREOF

LEGEND:

- = SET 5/8" REBAR WITH ALUMINUM CAP "LS 4845"
- = SET NAIL WITH BRASS TAG "LS 4845" SET ON TOP OF FENCE
- = FOUND MONUMENT AS NOTED
- M = MEASURED DATA
- FD = FOUND
- IP = IRON PIPE
- BC = BRASS CAP
- R = GLO (1880) (REILLY), (1878) (HERRMANN)
- R1 = 31 SURV 71 (2011)
- R2 = 16 SURV 16 (1989)
- R3 = X-4 SURV 70 (1967)
- R4 = DIVISION OF HIGHWAY RIGHT OF WAY MAP 5-MON-101 P.M. R16 4-R19 3
- R5 = 5 PM 92 (1973)
- R6 = LOU G HARE, C E FIELD NOTES FIELD BOOK VOL 25 (1900) ON FILE IN THE OFFICE OF THE COUNTY SURVEYOR
- R7 = 9 SURV 125 (1970)
- R8 = 3 PM 71 (1972)
- R9 = 14 PM 172 (1979)
- R10 = 13 SURV 91 (1983)
- R11 = 5 SURV 25 (1955)
- SNF = SEARCHED NOTHING FOUND
- SP = SINGLE PROPORTION
- DP = DOUBLE PROPORTION
- INTX = INTERSECTION
- FTC = FROM TRUE CORNER
- CF = CALCULATED FROM RECORD
- PR = PRORATION-ROTATION
- NTS = NOT TO SCALE
- = BOUNDARY PER THIS SURVEY AND MAP
- - - - = PARTITION LINE



PARCEL MAP
PLN 110015
RESOLUTION NO. 13-003

BEING A SUBDIVISION OF A PORTION OF SECTIONS 28, 31, 32 AND 33, T22S, R10E OF MDB&M ALONG WITH A PORTION OF SECTIONS 1, 12 AND 13, T23S, R9E OF MDB&M, ALONG WITH A PORTION OF SECTIONS 4, 6, 7, 8, 9, 18 AND 19, T23S, R10E, MDB&M, IN THE COUNTY OF MONTEREY, STATE OF CALIFORNIA

TWIN CITIES SURVEYING, INC.

615-C S MAIN STREET / P O BOX 777
TEMPLETON, CALIFORNIA 93465-0777
(805) 434-1834
SHEET 17 OF 18 DEC, 2016 JN 10002

ADDITIONAL INFORMATION

THE FOLLOWING ADDITIONAL INFORMATION IS FOR INFORMATIONAL PURPOSES, DESCRIBING CONDITIONS AS OF THE DATE OF FILING, AND IS NOT INTENDED TO AFFECT RECORD TITLE INTEREST. THE INFORMATION IS DERIVED FROM THE RESOLUTION OF APPROVAL FOR THIS SUBDIVISION BY THE MONTEREY COUNTY MINOR SUBDIVISION COMMITTEE (MS RESOLUTION NO 13-003)

1 THE CURRENT PROPERTY OWNERS OF RECORD AND ALL FUTURE BUYERS OF ANY OF THE PARCELS CREATED BY THIS SUBDIVISION ARE HEREBY NOTIFIED THAT, AT THE TIME OF THE SUBDIVISION CREATING THESE PARCELS, THE SUBJECT PROPERTY WAS NOT GUARANTEED TO HAVE A VIABLE SITE FOR AN ONSITE WASTEWATER DISPOSAL SYSTEM. NO SOILS OR PERCOLATION REPORT BY A QUALIFIED SOILS ENGINEER HAS BEEN COMPLETED WHICH DEMONSTRATES THAT THE SUBJECT PROPERTY MEETS STATE STANDARDS AND LOCAL STANDARDS SET FORTH IN THE MONTEREY COUNTY CODE (MCC), TITLE 15, CHAPTER 15 20. AT THE TIME OF THE SUBDIVISION CREATING THE SUBJECT PARCELS, THE SUBJECT PROPERTY WAS UTILIZED FOR AGRICULTURAL PRODUCTION, AND NO DEVELOPMENT OF THE PARCELS FOR OTHER PURPOSES WAS PROJECTED. THEREFORE, THE COUNTY HAS NOT VERIFIED THAT THE SUBJECT PARCELS CREATED BY THIS SUBDIVISION HAVE AN ONSITE WASTEWATER SITE MEETING ALL STATE STANDARDS AND LOCAL STANDARDS SET FORTH IN MCC CHAPTER 15 20. THE CURRENT PROPERTY OWNERS OF RECORD AND ALL FUTURE BUYERS OF THE SUBJECT PROPERTY ARE HEREBY FURTHER NOTIFIED THAT NO DEVELOPMENT WILL BE PERMITTED AND NO BUILDING PERMIT WILL BE ISSUED FOR DEVELOPMENT ON THESE PARCELS UNTIL THE OWNER(S) OF A PARCEL PROPOSED FOR DEVELOPMENT DEMONSTRATES TO THE SATISFACTION OF THE COUNTY THAT THE SUBJECT PARCEL PROPOSED FOR DEVELOPMENT HAS A SUITABLE ONSITE WASTEWATER SITE MEETING ALL STATE STANDARDS AND ALL LOCAL STANDARDS SET FORTH IN MCC CHAPTER 15 20. FOR THE PURPOSE OF THIS RESTRICTION, THE TERM DEVELOPMENT INCLUDES ANY LAND IMPROVEMENT OR ENTITLEMENT THAT WOULD UTILIZE WATER FOR NON-IRRIGATION PURPOSES AND REQUIRE ONSITE WASTEWATER DISPOSAL.

2 THE CURRENT PROPERTY OWNERS OF RECORD AND ALL FUTURE BUYERS OF ANY PARCEL CREATED BY THIS SUBDIVISION ARE HEREBY NOTIFIED THAT THE PARCELS CREATED BY THIS SUBDIVISION ARE NOT GUARANTEED TO HAVE WATER OF SUFFICIENT QUALITY OR QUANTITY TO MEET STATE STANDARDS AND LOCAL DRINKING WATER STANDARDS SET FORTH IN THE MONTEREY COUNTY CODE (MCC) TITLE 15, CHAPTERS 15 04 AND 15 08 AND MCC TITLE 19. AT THE TIME OF THE SUBDIVISION, THE SUBJECT PROPERTY WAS UTILIZED FOR AGRICULTURAL PRODUCTION, AND NO DEVELOPMENT OF THE PARCELS FOR OTHER PURPOSES WAS PROJECTED. THEREFORE, THE COUNTY HAS NOT VERIFIED THAT EACH PARCEL HAS WATER QUALITY AND QUANTITY MEETING STATE AND LOCAL DRINKING WATER STANDARDS. THE CURRENT PROPERTY OWNERS OF RECORD AND ALL FUTURE BUYERS OF ANY PARCEL CREATED BY THIS SUBDIVISION ARE HEREBY FURTHER NOTIFIED THAT NO DEVELOPMENT WILL BE PERMITTED AND NO BUILDING PERMIT WILL BE ISSUED FOR DEVELOPMENT ON ANY PARCEL IN THE SUBDIVISION UNTIL THE OWNER OF THAT PARCEL PROPOSED FOR DEVELOPMENT DEMONSTRATES TO THE SATISFACTION OF THE COUNTY THAT THE PARCEL HAS A WATER SOURCE MEETING ALL STATE AND LOCAL DRINKING WATER QUALITY AND QUANTITY STANDARDS, WITHOUT TREATMENT, AS SET FORTH IN MCC TITLE 15, CHAPTERS 15 04 AND 15 08, AND TITLE 19. FOR THE PURPOSE OF THIS RESTRICTION, THE TERM DEVELOPMENT INCLUDES ANY LAND IMPROVEMENT OR ENTITLEMENT THAT WOULD UTILIZE WATER FOR NON-IRRIGATION PURPOSES AND REQUIRE ONSITE WASTEWATER DISPOSAL.

3 THE CURRENT PROPERTY OWNERS OF RECORD AND ALL FUTURE BUYERS OF ANY OF THE PARCELS CREATED BY THIS SUBDIVISION ARE HEREBY NOTIFIED THAT, AT THE TIME OF THE SUBDIVISION CREATING THESE PARCELS, THE SUBJECT PROPERTY WAS NOT GUARANTEED TO HAVE ACCESS. ANYONE INTERESTED IN PURCHASING ANY PARCEL IS WARNED THAT PURCHASING THE PARCEL WITHOUT ACCESS BEING PROVIDED WILL RESTRICT OR EVEN PRECLUDE THE ABILITY TO UNDERTAKE DEVELOPMENT OF THE PARCEL.

PARCEL MAP

PLN 110015

RESOLUTION NO. 13-003

BEING A SUBDIVISION OF A PORTION OF SECTIONS 28, 31, 32 AND 33, T22S, R10E OF MDB&M ALONG WITH A PORTION OF SECTIONS 1, 12 AND 13, T23S, R9E OF MDB&M, ALONG WITH A PORTION OF SECTIONS 4, 6, 7, 8, 9, 18 AND 19, T23S, R10E, MDB&M, IN THE COUNTY OF MONTEREY, STATE OF CALIFORNIA

TWIN CITIES SURVEYING, INC.

615-C S MAIN STREET / P O BOX 777
TEMPLETON, CALIFORNIA 93465-0777

(805) 434-1834

SHEET 18 OF 18 DEC, 2015 JN 10002