

Attachment A

This page intentionally left blank.

COST ESTIMATES

OPTIONS	APPROX. AREA	ESTIMATED PROJECT COST	ESTIMATED COST/SF
Scheme 1 – Remove Jail/Convert to parking or landscaped area	17,700 GSF	\$4,258,000	\$241
Scheme 2 - Save Historic Alisal Facade with New Building behind	20,550 GSF	\$35,776,000	\$1,741
Scheme 3 - Retain Admin Wing with New Building behind	20,550 GSF	\$24,186,000	\$1,177
Scheme 4 - Rehab Original 1930 Construction with New First Floor	22,650 GSF	\$22,632,000	\$999
Scheme 5 - Full Rehabilitation of Entire Jail	23,325 GSF	\$16,424,000	\$704
Scheme 6 - Full Preservation (Mothballing) Facility	30,095 GSF	\$2,569,000	\$86
Scheme 7 - Alisal Façade Preservation with Park	N/A	\$11,000,000	N/A
Scheme 8 - 1930 Restoration of Original Jail	20,000 GSF	\$34,000,000	\$1,700
Scheme 9 – Remove Jail/replace with New Commemorative Park	TBD	\$5,000,000	N/A



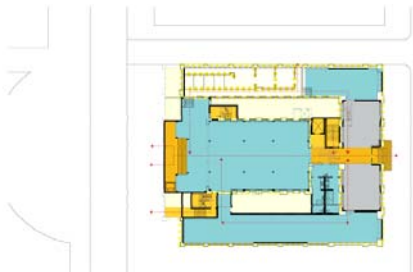
Scheme 1



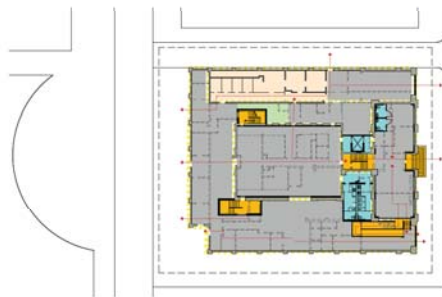
Scheme 2



Scheme 3



Scheme 4



Scheme 5



Scheme 6



This page intentionally left blank.