

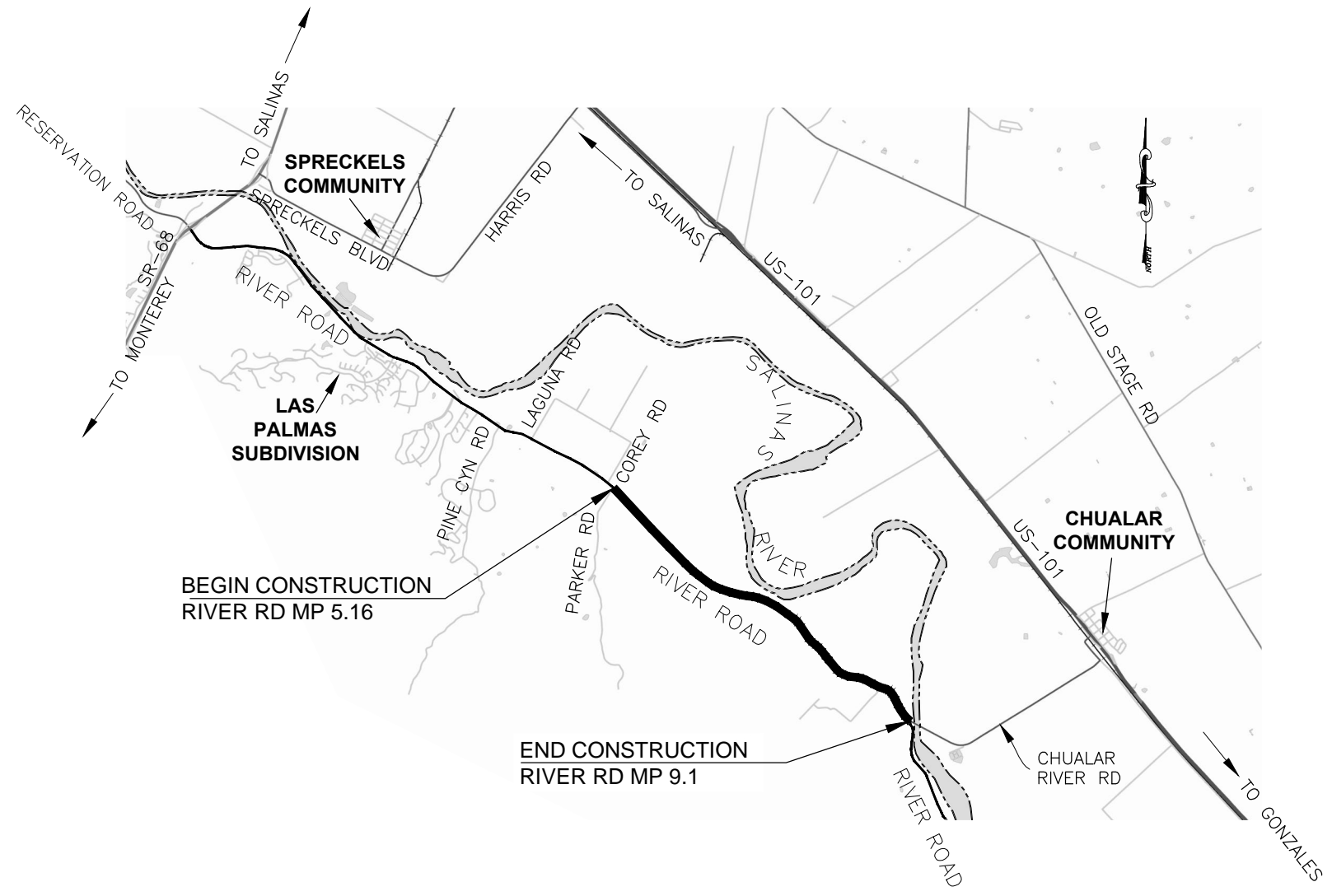
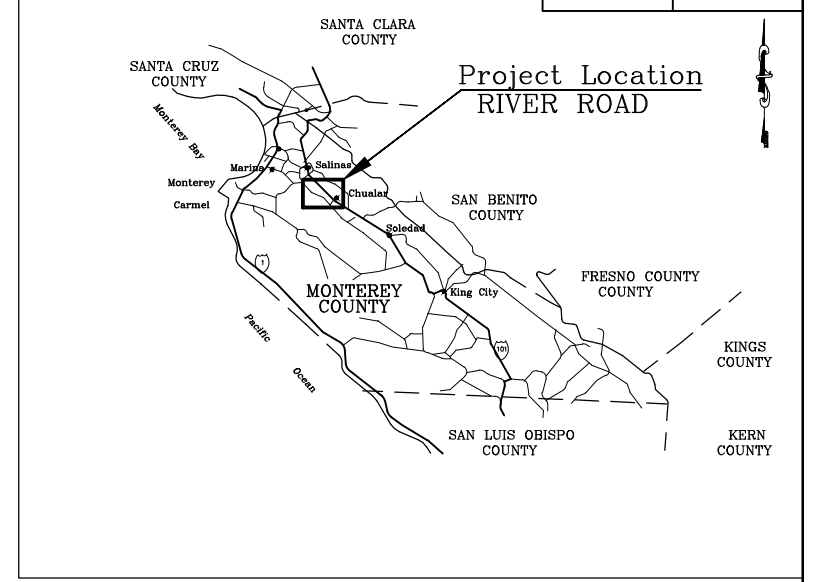
SHEET NUMBER	TOTAL SHEETS
1	5

COUNTY OF MONTEREY
 STATE OF CALIFORNIA
 DEPARTMENT OF PUBLIC WORKS
**PROJECT PLANS FOR CONSTRUCTION OF
 RIVER ROAD OVERLAY**
 PROJECT NO. 1724

TO BE SUPPLEMENTED BY CALTRANS STANDARD SPECIFICATIONS AND STANDARD PLANS 2010 EDITION

INDEX OF SHEETS

- 1 TITLE SHEET
- 2 TYPICAL CROSS SECTION
- 3 CONSTRUCTION AREA SIGNS
- 4 CONSTRUCTION DETAILS
- 5 SUMMARY OF QUANTITIES



THE CONTRACTOR SHALL POSSESS THE CLASS (OR CLASSES) OF LICENSE AS SPECIFIED IN THE "NOTICE TO BIDDERS."

BY ACTION OF THE BOARD OF SUPERVISORS
 APPROVED ON _____
 PER BOARD ORDER No. _____ PUBLIC WORKS
 _____ DATE
 ROBERT K. MURDOCH, P.E.
 DIRECTOR OF PUBLIC WORKS

SUBMITTED BY, JONATHAN L. PASCUA, P.E. PROJECT MANAGER	
DESIGN BY, BARNEY GUZMAN PROJECT ENGINEER	CHKD BY, J.P.
DRAWN BY, THANT NYUNT	CHKD BY, J.P.
SPECIFICATIONS WRITTEN BY, BARNEY GUZMAN	CHKD BY, J.P.
APPROVAL RECOMMENDED BY, ENRIQUE M. SAAVEDRA, P.E. ACTING ASSISTANT DIRECTOR OF PUBLIC WORKS	



NO.	DATE	REVISION	APPROVED



COUNTY OF MONTEREY
 RESOURCE MANAGEMENT AGENCY
 DEPARTMENT OF PUBLIC WORKS
 DESIGN SECTION
 168 WEST ALISAL STREET, 2nd FLOOR
 SALINAS, CALIFORNIA 93901
 (831)755-4800/FAX (831)755-4958

RIVER ROAD OVERLAY		
PROJECT NO. 1724		
TITLE SHEET		
DATE 1/12/15	RELATIVE BORDER SCALE: IN INCHES 0 1 2 3	SHEET TS-1
SCALE NTS	VIEW TS-1	

SHEET NUMBER	TOTAL SHEETS
5	5

***NEW SURVEY MONUMENTS**

STATION	LOCATION	QUANTITY
	Milepost EA	
276+73.86	5.24	1
291+99.12	5.53	1
307+15.14	5.82	1
325+08.36	6.16	1
334+29.06	6.33	1
342+30.96	6.48	1
346+76.45	6.57	1
357+75.55	6.78	1
369+43.01	7.00	1
381+23.02	7.22	1
393+86.80	7.46	1
405+42.99	7.68	1
417+10.67	7.90	1
428+75.81	8.12	1
442+29.28	8.38	1
453+55.44	8.59	1
461+91.06	8.75	1
TOTAL		17

*Note 1: The 17 new monuments listed above replace existing 1"x30" iron pipe survey monuments (top of pipe approximately flush with existing pavement). Existing pipe monuments are to be completely removed prior to construction of PCC monument.

ADJUST MONUMENT FRAME AND COVER TO GRADE

STATION	LOCATION	MONUMENT QUANTITY
	Milepost EA	
474+24.15	8.98	1
TOTAL		1

Note: Frame and cover to be raised in substantial conformance with the specification of Detail 5, Sheet 2.

ROADWAY QUANTITY

LOCATION	HOT MIX ASPHALT (TYPE A)	**TACK COAT (SEE NOTE 2)	SLURRY SEAL (TYPE III)	COLD IN-PLACE RECYCLING	IMPORTED MATERIAL (SHOULDER BACKING)
	TON	TON	TON	SQFT	TON
MP 5.16 TO MP 9.1	7489	11.9		515916	960
DRIVEWAYS & CROSS ROAD	70	0.1			
SAFETY EDGE	85				
MP 9.1			26		
TOTAL	7644	12	26	515916	960

**Note 2: Not a contract item, for information only.

COLD PLANE ASPHALT CONCRETE PAVEMENT

LOCATION	MP	SIDE	AREA
			SQYD
BEGIN PROJECT HMA TRANSITION	5.16		45
PARKER RD/RIVER RD INT.	5.16	RT	70
END PROJECT HMA TRANSITION	9.1		80
DRIVEWAY 1	5.4	RT	25
DRIVEWAY 2	6.6	RT	25
DRIVEWAY 3	6.8	LT	25
DRIVEWAY 4	6.9	LT	36
DRIVEWAY 5	7.2	LT	30
DRIVEWAY 6	7.5	RT	28
DRIVEWAY 7	8.6	RT	21
TOTAL			385

PAVEMENT DELINEATION

LOCATION	REMOVE PAVEMENT MARKER	REMOVE TRAFFIC STRIPING	REMOVE PAVEMENT MARKING
	EA	FT	SQFT
MP 5.16 TO MP 9.1	750	455	132
TOTAL	750	455	132

HMA DIKE TYPE A

MILEPOSTS		REMOVE ASPHALT CONCRETE DIKE (TYPE A)	HOT MIX ASPHALT DIKE (TYPE A)	HOT MIX ASPHALT (TYPE A)
FROM	TO	LF	LF	TON
9.00	9.07	400	400	11
TOTAL		400	400	11

SUBMITTED BY: JONATHAN L. PASCUA, P.E.
 DESIGN BY: BARNEY GUZMAN
 DRAWN BY: THANT NYUNT
 SPECIFICATIONS WRITTEN BY: BARNEY GUZMAN
 APPROVAL RECOMMENDED BY: ENRIQUE M. SAAVEDRA, P.E.
 ACTING ASSISTANT DIRECTOR OF PUBLIC WORKS



NO.	DATE	REVISION	APPROVED



COUNTY OF MONTEREY
 RESOURCE MANAGEMENT AGENCY
 DEPARTMENT OF PUBLIC WORKS
 DESIGN SECTION
 168 WEST ALISAL STREET, 2nd FLOOR
 SALINAS, CALIFORNIA 93901
 (831)755-4800/FAX (831)755-4958

RIVER ROAD OVERLAY
 PROJECT NO. 15-172465
SUMMARY OF QUANTITIES



DATE 1/12/15	RELATIVE BORDER SCALE: IN INCHES 0 1 2 3	SHEET Q-1
SCALE NTS	VIEW Q-1	



RIVER ROAD/PARKER ROAD



RIVER ROAD/CHUALAR RIVER ROAD

LEGEND:
HMA 
SLURRY SEAL 

SUBMITTED BY, JONATHAN L. PASCUA, P.E.
PROJECT MANAGER
DESIGN BY, BARNEY GUZMAN, PROJECT ENGINEER
DRAWN BY, THANT NYUNT
SPECIFICATIONS WRITTEN BY, BARNEY GUZMAN
APPROVAL RECOMMENDED BY, ENRIQUE M. SAAVEDRA, P.E.
ACTING ASSISTANT DIRECTOR OF PUBLIC WORKS



NO.	DATE	REVISION	APPROVED
△			
△			
△			
△			
△			

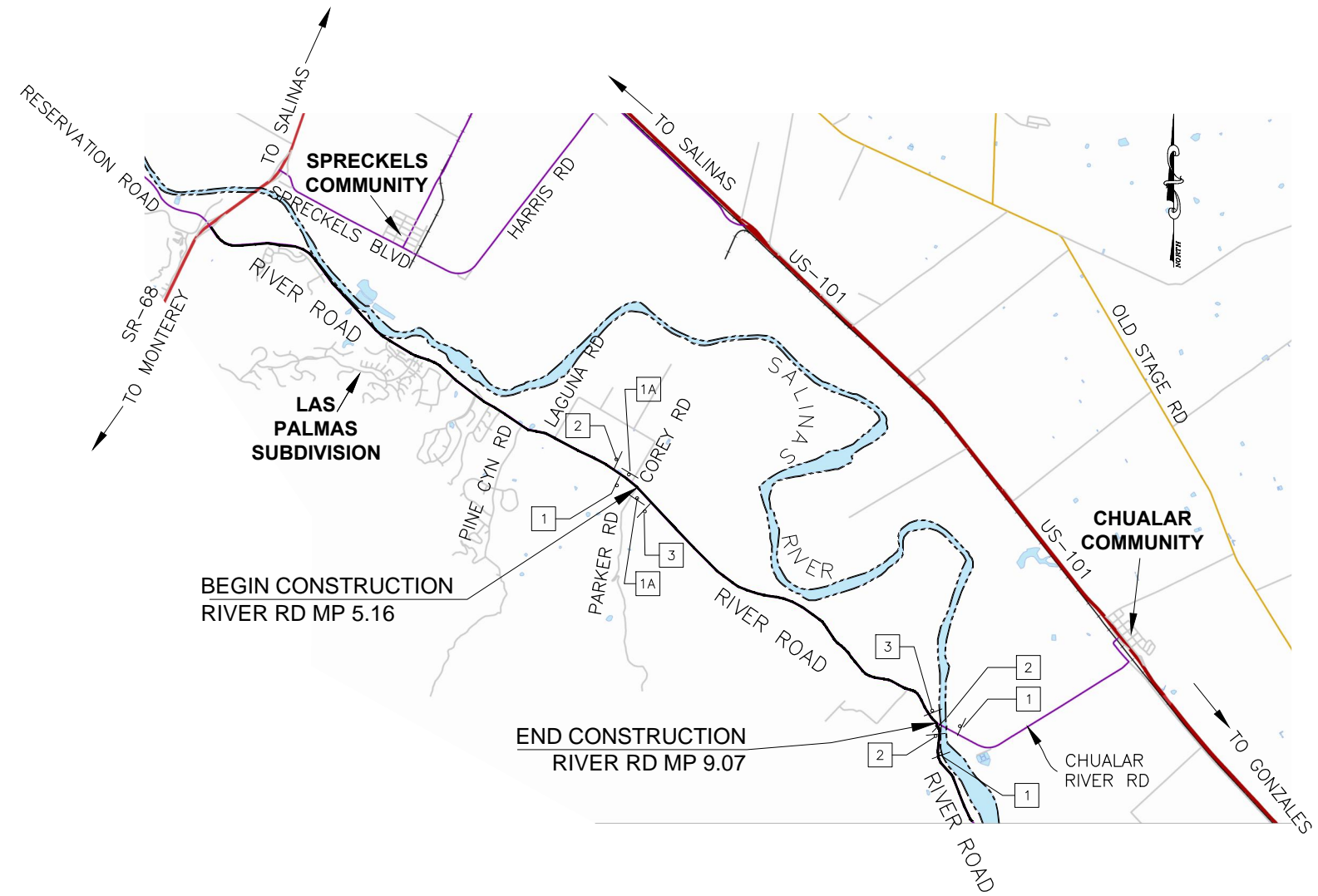


COUNTY OF MONTEREY
RESOURCE MANAGEMENT AGENCY
DEPARTMENT OF PUBLIC WORKS
DESIGN SECTION
168 WEST ALISAL STREET, 2nd FLOOR
SALINAS, CALIFORNIA 93901
(831)755-4800/FAX (831)755-4958

RIVER ROAD OVERLAY		
PROJECT NO. 1724		
CONSTRUCTION DETAILS		
DATE 1/12/15	RELATIVE BORDER SCALE: IN INCHES 0 1 2 3	SHEET C-1
SCALE NTS	VIEW C-1	

CONSTRUCTION AREA SIGNS (STATIONARY MOUNTED)					
SIGN NO.	SIGN CODE	SIGN MESSAGE	PANEL SIZE (in)	NO. OF POST AND SIZE	NO. OF SIGNS
1	W20-1	ROAD WORK AHEAD	48 X 48	2 - 4in X 4in	3
1A	W20-1	ROAD WORK AHEAD	36 X 36	1 - 4in X 4in	2
2	G20-2	END ROAD WORK	48 X 24	2 - 4in X 4in	3
3	G20-1	ROAD WORK NEXT 4 MILES	60 X 36	2 - 4in X 4in	2

- NOTES:
- THIS PLAN ACCURATE FOR CONSTRUCTION AREA SIGN WORK ONLY.
 - EXACT SIGN LOCATIONS TO BE DETERMINED BY THE ENGINEER.
 - CONTRACTOR SHALL CALL USA NORTH AT 811/1-800-227-2600 BEFORE ANY DIGGING OR EXCAVATION.



SUBMITTED BY, JONATHAN L. PASCUA, P.E.
PROJECT MANAGER

DESIGN BY, BARNEY GUZMAN, PROJECT ENGINEER
CHKD BY, J.P.

DRAWN BY, FELIPE MORALES
CHKD BY, J.P.

SPECIFICATIONS WRITTEN BY, BARNEY GUZMAN
CHKD BY, J.P.

APPROVAL RECOMMENDED BY, ENRIQUE M. SAAVEDRA, P.E.
ACTING ASSISTANT DIRECTOR OF PUBLIC WORKS



NO.	DATE	REVISION	APPROVED



COUNTY OF MONTEREY
RESOURCE MANAGEMENT AGENCY
DEPARTMENT OF PUBLIC WORKS

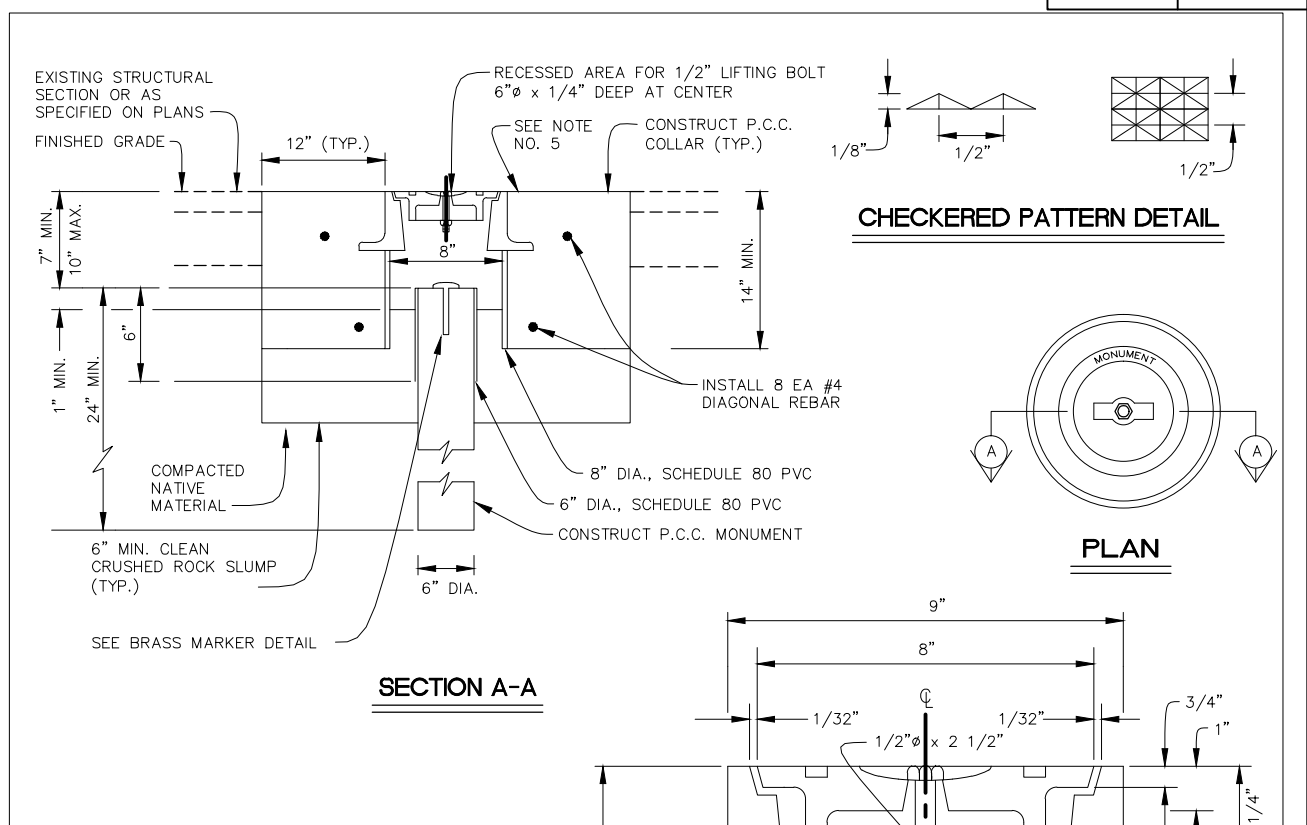
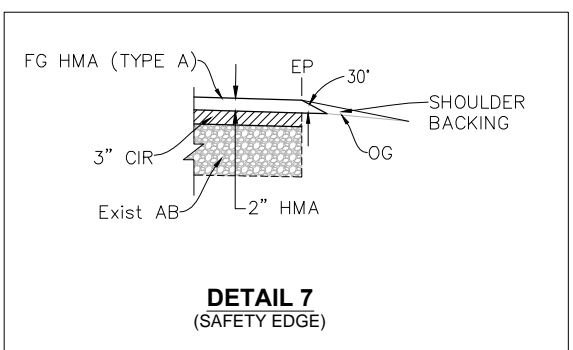
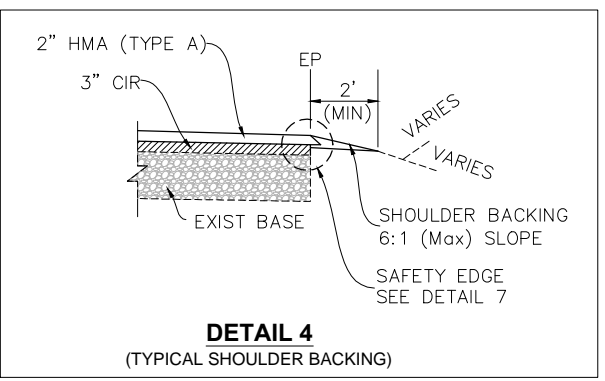
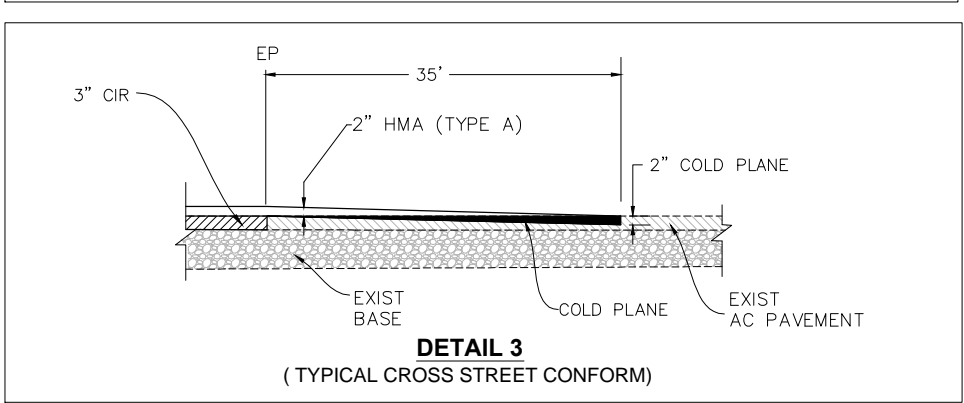
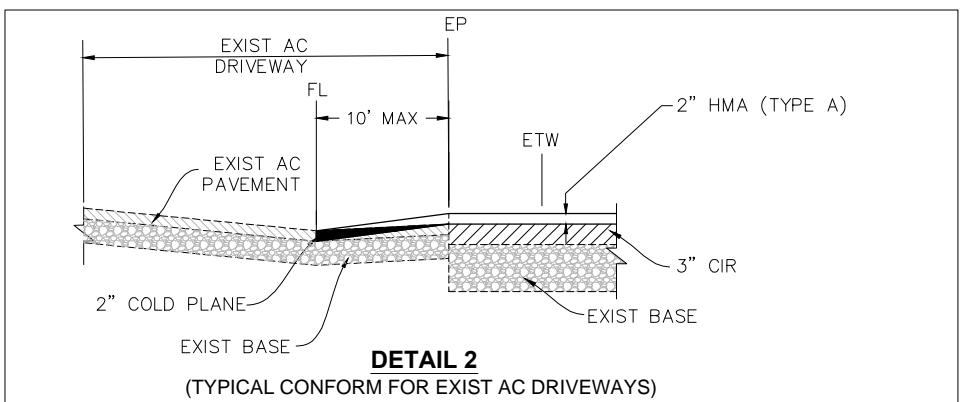
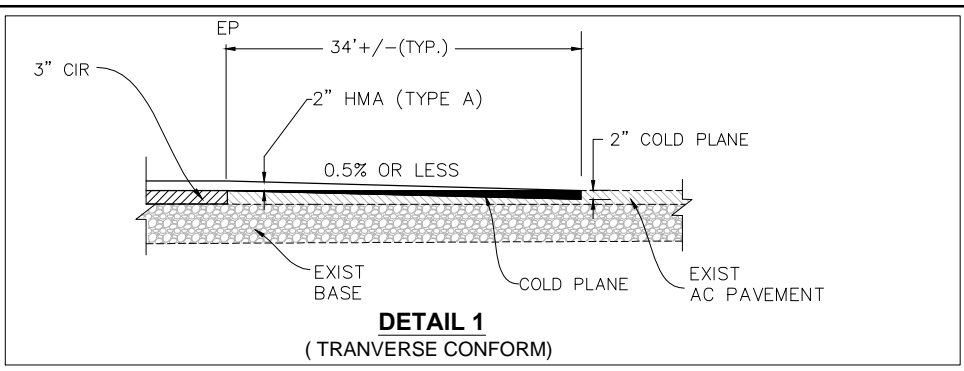
DESIGN SECTION

168 WEST ALISAL STREET, 2nd FLOOR
SALINAS, CALIFORNIA 93901
(831)755-4800/FAX (831)755-4958

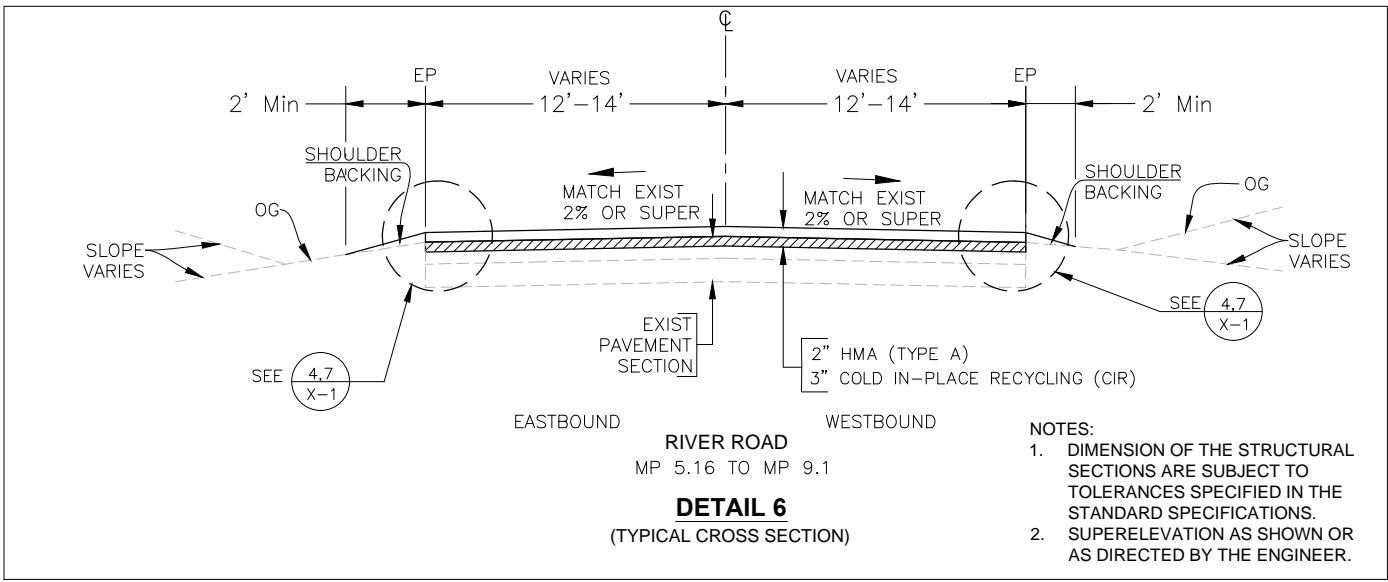
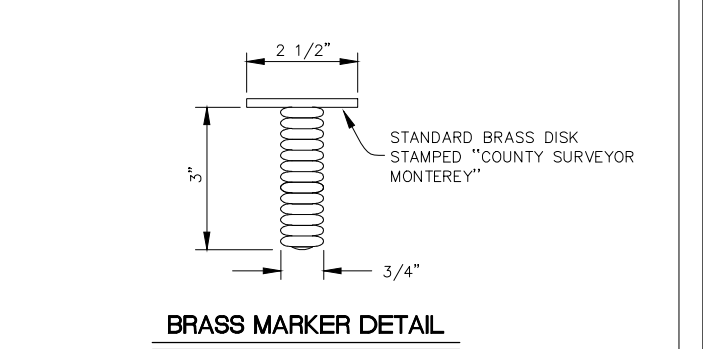
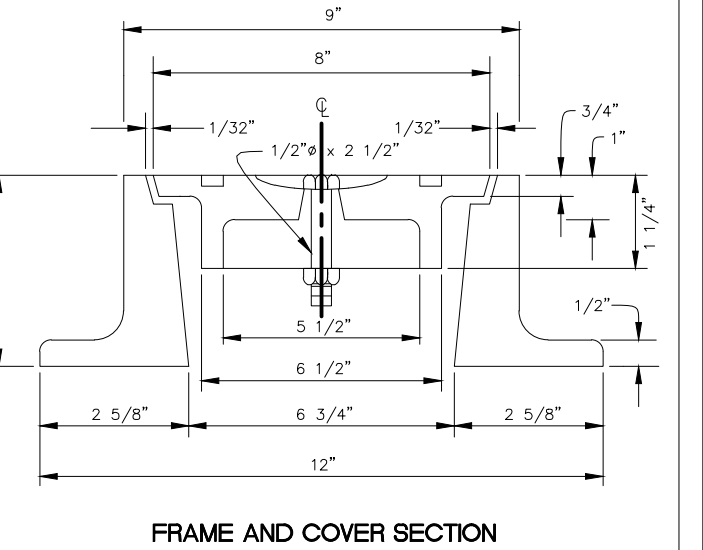
RIVER ROAD OVERLAY
PROJECT NO. 15-172465

CONSTRUCTION AREA SIGNS

DATE 1/7/15	RELATIVE BORDER SCALE: IN INCHES 0 1 2 3	SHEET CS-1
SCALE NTS	VIEW CS-1	



- GENERAL NOTES**
- DRAWING NOT TO SCALE.
 - MONUMENT FRAME AND COVER SHALL BE GRAY CAST IRON, FREE OF BLISTERS, BLOWHOLES, AND COLD SHUNTS.
 - MONUMENT SHALL BE FURNISHED AND INSTALLED PER PLANS AND STANDARD SPECIFICATIONS, COMPLETE WITH MARKER. UNLESS OTHERWISE SPECIFIED, COUNTY SHALL PROVIDE BRASS MARKER.
 - BEARING SURFACES OF FRAME AND COVER SHALL FIT WITH POSITIVE PRESSURE ON ALL SURFACES AND SHALL BE NON-ROCKING.
 - ALL CONCRETE SHALL BE CONSTRUCTED IN ACCORDANCE WITH CLASS "3" OF THE STANDARD SPECIFICATIONS. MIX CONCRETE WITH BLACK PIGMENT MATERIAL.
 - FRAME AND COVER SHALL BE AMERICAN BRASS AND FOUNDRY 5020-21 OR APPROVED EQUAL BY THE ENGINEER.
 - COUNTY SURVEYOR SHALL PROVIDE CONTRACTOR FOUR REFERENCE POINTS AT EACH MONUMENT POSITION. CONTRACTOR WILL CUT PAVEMENT, REMOVE ANY EXISTING IRON PIPE SURVEY MONUMENT, AND INSTALL MONUMENT WITH COUNTY BRASS DISK WET SET IN P.C.C. MONUMENT AT INTERSECTION OF FOUR REFERENCE POINTS.
 - ANY EXISTING IRON PIPE SURVEY MONUMENT SHALL BE COMPLETELY REMOVED PRIOR TO CONSTRUCTION OF P.C.C. MONUMENT.



- NOTES:**
- DIMENSION OF THE STRUCTURAL SECTIONS ARE SUBJECT TO TOLERANCES SPECIFIED IN THE STANDARD SPECIFICATIONS.
 - SUPERELEVATION AS SHOWN OR AS DIRECTED BY THE ENGINEER.

LEGEND:

HMA	[Pattern]
CIR	[Pattern]
Exist AB	[Pattern]
Exist AC	[Pattern]
COLD PLANE	[Pattern]

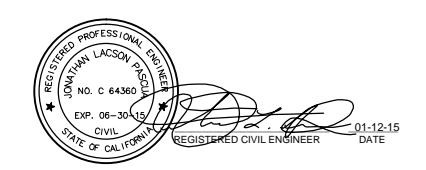
SUBMITTED BY: JONATHAN L. PASCUA, P.E.
PROJECT MANAGER

DESIGN BY: BARNEY GUZMAN
PROJECT ENGINEER

DRAWN BY: THANT NYUNT

SPECIFICATIONS WRITTEN BY: BARNEY GUZMAN

APPROVAL RECOMMENDED BY: ENRIQUE M. SAAVEDRA, P.E.
ACTING ASSISTANT DIRECTOR OF PUBLIC WORKS



NO.	DATE	REVISION	APPROVED
▲			
▲			
▲			
▲			
▲			



COUNTY OF MONTEREY
RESOURCE MANAGEMENT AGENCY
DEPARTMENT OF PUBLIC WORKS

DESIGN SECTION

168 WEST ALISAL STREET, 2nd FLOOR
SALINAS, CALIFORNIA 93901
(831)755-4800/FAX (831)755-4958

RIVER ROAD OVERLAY PROJECT NO. 1724		
TYPICAL CROSS SECTIONS		
DATE 1/12/15	RELATIVE BORDER SCALE: IN INCHES 0 1 2 3	SHEET X-1
SCALE NTS	VIEW XS-1	