

# Attachment I

This page intentionally left blank.



# Monterey Bay Engineers, Inc.

## Civil Engineering • Land Surveying

Steve C. Wilson, RCE 25,136 / PLS 5,207  
Brian M. Wilson, PLS 7,771  
Benjamin C. Wilson, RCE 72,928

607 Charles Ave. Suite B, Seaside, Ca 93955  
Phone (831) 899-7899 Fax (831) 899-7879  
Email : mbayengr@mbay.net  
Website : mbeinc.com

November 20, 2024

To: Fionna Jensen, Senior Planner, County of Monterey  
1441 Schilling Place, South 2<sup>nd</sup> Floor  
Salinas, CA 93901

Re: Topographic Survey of Lot 10, Oakshire Subdivision  
10196 Oakwood Circle, Carmel, 93923  
Assessor's Parcel 416-542-011

To Fionna Jensen:

Monterey Bay Engineers, Inc. has performed land surveying services for the owner of the above referenced property. Two Topographic Surveys were completed dated May 6, 2016 and June 8, 2023. As requested, the following is a clarification on the elevations shown for each map.

May 6, 2016 – Topographic Survey of existing site conditions:

The basis of elevations shown for this map were assumed on a project benchmark at 200.00'. This assumed datum was noted on the map. All topographic information shown on the map is accurate relative to that assumed datum.

June 8, 2023 – Updated Topographic Survey of existing site conditions:

Additional information for the existing sanitary sewer system was added and the elevations were adjusted upward by 27.12' to the NAVD-88 datum. The NAVD-88 datum elevations at the site were established with a Global Positioning System. The project benchmark now has an elevation of 227.12'. All topographic information shown on the map is accurate relative to the NAVD-88 datum. This map supersedes the May 6, 2016 map. Producing a map on a known datum allows the survey to be compared to other maps and surveys on the same datum or previous datums where the difference is known.

Please contact me if there are any questions.

Sincerely,

Brian M. Wilson



11/20/2024



**NOTES:**

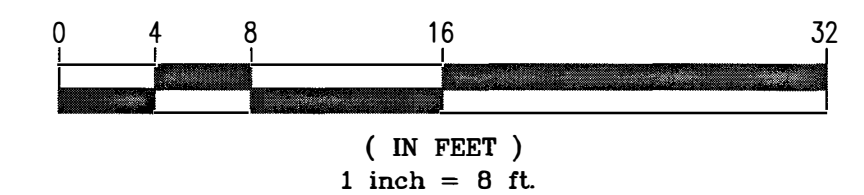
- BOUNDARY INFORMATION SHOWN IS FROM THE RECORD AND WAS TAKEN FROM, VOLUME 16 CITIES AND TOWNS, PAGE 8.
- DISTANCES SHOWN ARE IN FEET AND DECIMALS THEREOF.
- CONTOUR INTERVAL = 1 FOOT.
- ELEVATIONS SHOWN ARE BASED ASSUMED DATUM. THE PROJECT BENCHMARK IS A MAG AND SHINER AS SHOWN. ELEVATION = 200.00'.
- DENOTES A FOUND MONUMENT AS NOTED.
- DENOTES A SET MONUMENT 3/4" IRON PIPE TAGGED "LS 7771".
- A CORNER RECORD WILL BE FILED WITH THE COUNTY OF MONTEREY SHOWING THE MONUMENTATION SET WITH THIS BOUNDARY SURVEY.
- THE 10 FOOT WIDE SANITARY SEWER EASEMENT IS SHOWN GRAPHICALLY ON VOLUME 16 CITIES & TOWNS, PAGE 8. THEREFORE THE EASEMENT WAS COMPUTED AND SHOWN HEREON BASED ON THAT INFORMATION.
- TREE TYPES ARE INDICATED WHEN KNOWN. DIAMETERS OF TREES ARE SHOWN IN INCHES.

**LEGEND:**

AC	ASPHALTIC CONCRETE
CATV	CABLE TV VAULT
CB	CATCH BASIN
CONC	CONCRETE
EP	EDGE OF PAVEMENT
EV	ELECTRIC VAULT
K	OAK
MRW	MASONRY RETAINING WALL
P.U.E.	PUBLIC UTILITY EASEMENT
S	STUMP
SSMH	SANITARY SEWER MANHOLE
T	TREE, SPECIES NOT SPECIFIED
TEL	TELEPHONE VAULT
WM	WATER METER
WV	WATER VALVE



**GRAPHIC SCALE**



5/6/2016

**TOPOGRAPHIC SURVEY**

OF  
**LOT 10 & G10, TRACT No. 1045**  
**OAKSHIRE PHASE (II-III) SUBDIVISION**  
**VOLUME 16, CITIES & TOWNS, PAGE 8**

CARMEL VALLEY COUNTY OF MONTEREY STATE OF CALIFORNIA

PREPARED FOR  
**RENE PEINADO**

BY  
**MONTEREY BAY ENGINEERS, INC.**

CIVIL ENGINEERING • SUBDIVISIONS • LAND SURVEYING • CONSTRUCTION STAKING  
 607 Charles Ave Suite B Seaside, California 93955  
 Phone: (831) 899-7899

SCALE: 1" = 8' JOB No. 16-054 APRIL 2016

FIELD: BMW & RNT DRAWN BY: BMW & RNT

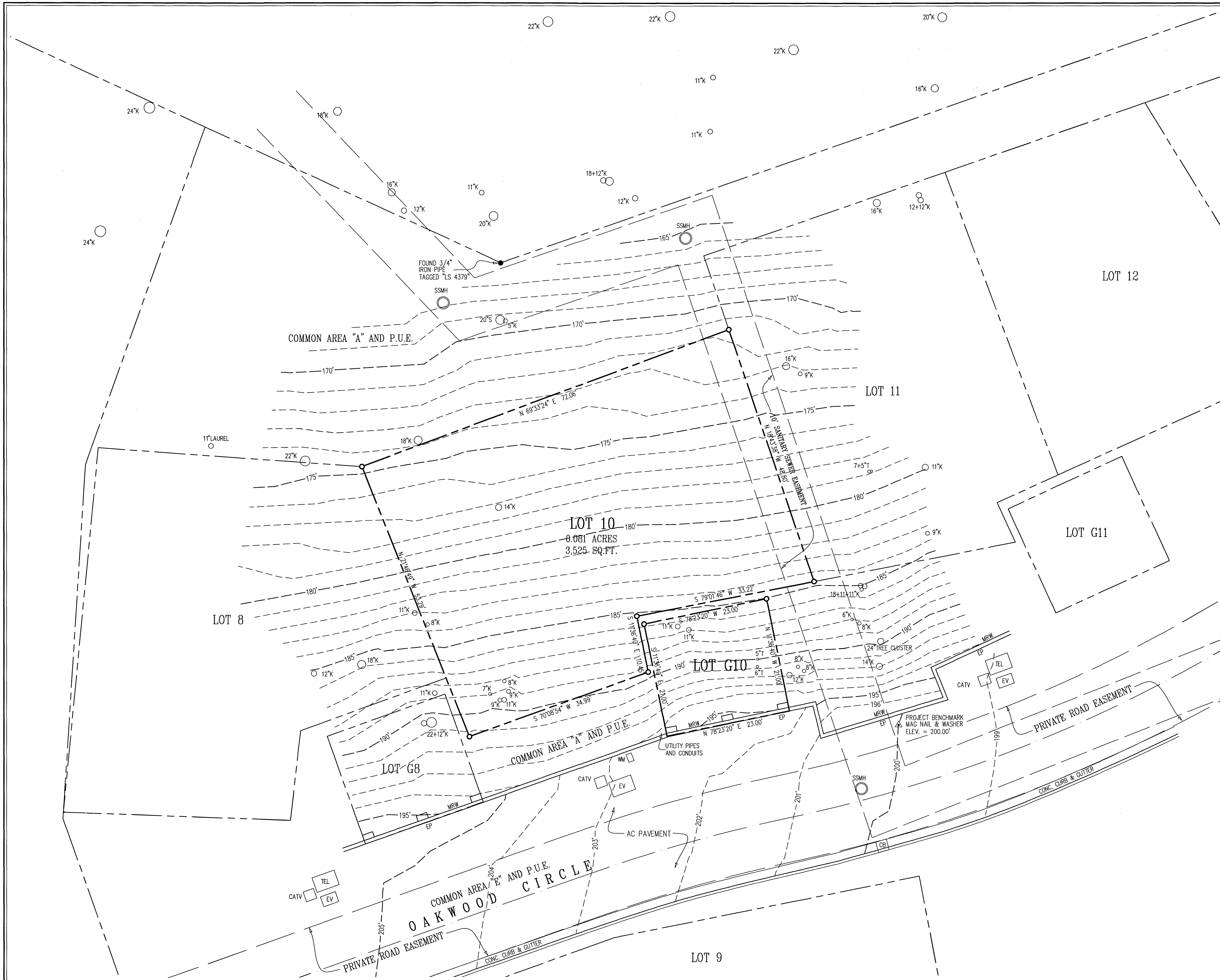
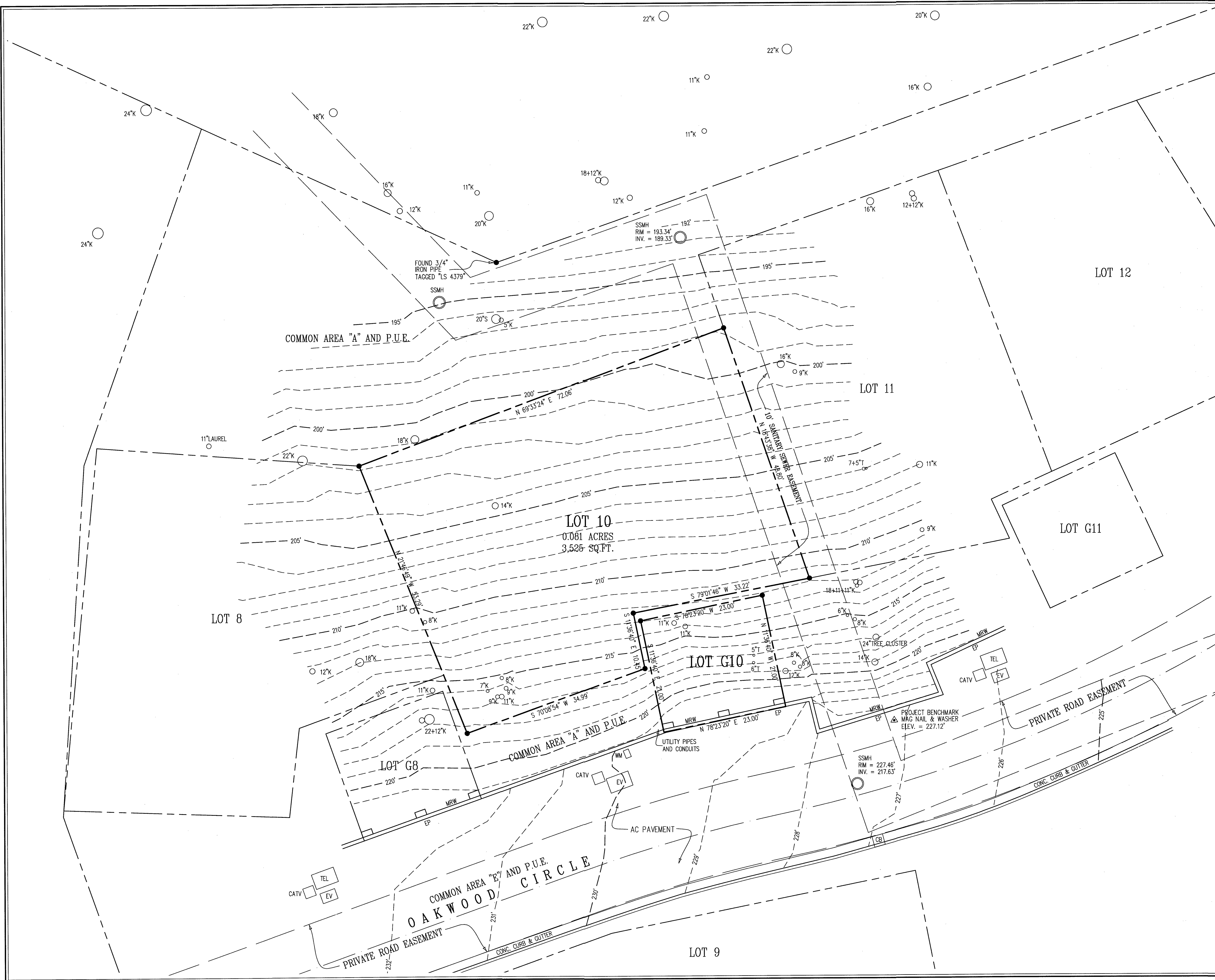




EXHIBIT I - 2023 TOPOGRAPHIC SURVEY

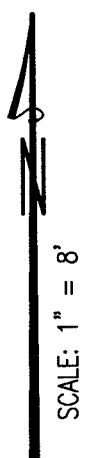


NOTES:

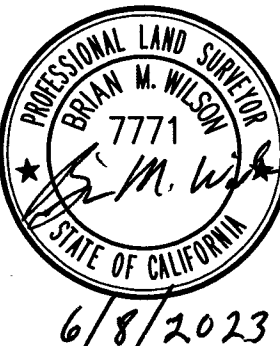
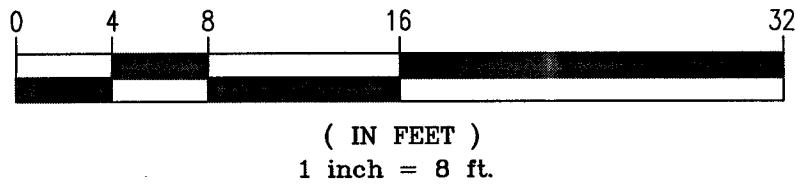
- 1. BOUNDARY INFORMATION SHOWN IS FROM THE RECORD AND WAS TAKEN FROM, VOLUME 16 CITIES AND TOWNS, PAGE 8.
- 2. DISTANCES SHOWN ARE IN FEET AND DECIMALS THEREOF.
- 3. CONTOUR INTERVAL = 1 FOOT.
- 4. ELEVATIONS SHOWN ARE BASED ON NAVD-88 DATUM. A GPS SURVEY WAS CONDUCTED TO ESTABLISH THE SITE BENCHMARK USING REFERENCE STATION "CAMT" ON THE SMARTNET NORTH AMERICA NETWORK. THE PROJECT BENCHMARK IS A MBE MAG NAIL WITH WASHER IN THE PAVEMENT, AS SHOWN ON THIS MAP. ELEVATION = 227.12'.
- 5. ● DENOTES A FOUND 3/4" IRON PIPE TAGGED "LS 7771", PER CORNER RECORD No. 1813, UNLESS OTHERWISE NOTED.
- 6. THE 10 FOOT WIDE SANITARY SEWER EASEMENT IS SHOWN ON VOLUME 16 CITIES & TOWNS, PAGE 8.
- 7. A BUILDING SETBACK LINE OF 5 FEET ALONG ALL LINES OF LOT 10 IS SHOWN ON VOLUME 16 CITIES & TOWNS, PAGE 8.
- 8. TREE TYPES ARE INDICATED WHEN KNOWN. DIAMETERS OF TREES ARE SHOWN IN INCHES.

LEGEND:

- AC . . . . . ASPHALTIC CONCRETE
- CATV . . . . . CABLE TV VAULT
- CB . . . . . CATCH BASIN
- CONC . . . . . CONCRETE
- EP . . . . . EDGE OF PAVEMENT
- EV . . . . . ELECTRIC VAULT
- K . . . . . OAK
- MRW . . . . . MASONRY RETAINING WALL
- P.U.E. . . . . PUBLIC UTILITY EASEMENT
- S . . . . . STUMP
- SSMH . . . . . SANITARY SEWER MANHOLE
- T . . . . . TREE, SPECIES NOT SPECIFIED
- TEL . . . . . TELEPHONE VAULT
- WM . . . . . WATER METER
- WV . . . . . WATER VALVE



GRAPHIC SCALE



TOPOGRAPHIC SURVEY

OF  
LOT 10 & G10, TRACT No. 1045  
OAKSHIRE PHASE (II-III) SUBDIVISION  
VOLUME 16, CITIES & TOWNS, PAGE 8

CARMEL VALLEY COUNTY OF MONTEREY STATE OF CALIFORNIA

PREPARED FOR  
RENE PEINADO

BY  
MONTEREY BAY ENGINEERS, INC.

CIVIL ENGINEERING • SUBDIVISIONS • LAND SURVEYING • CONSTRUCTION STAKING  
607 Charles Ave Suite B Seaside, California 93955  
Phone: (831) 899-7899

SCALE: 1" = 8' JOB No. 16-054 APRIL, 2016

FIELD: BMW, RNT, END & MAL REVISED JUNE, 2023 DRAWN BY: BMW & END

This page intentionally left blank