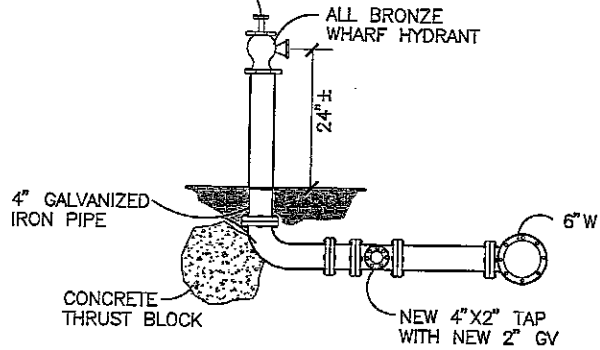


AS-BUILT SERVICE & HYDRANT

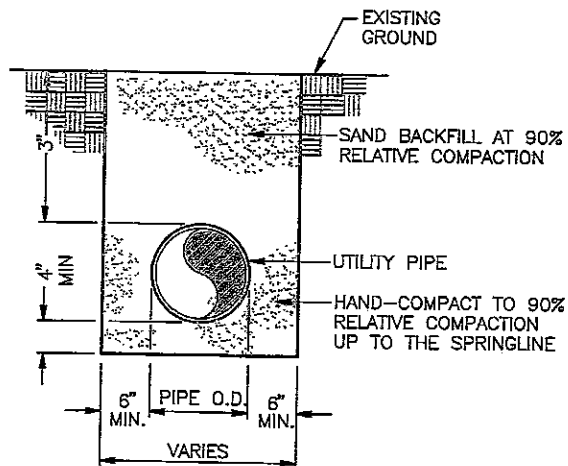
NOT TO SCALE

GREENBERG #123 OR EQUAL,
4" INLET, 2-1/2" HOSE OUTLET,
WITH THREADED CAP



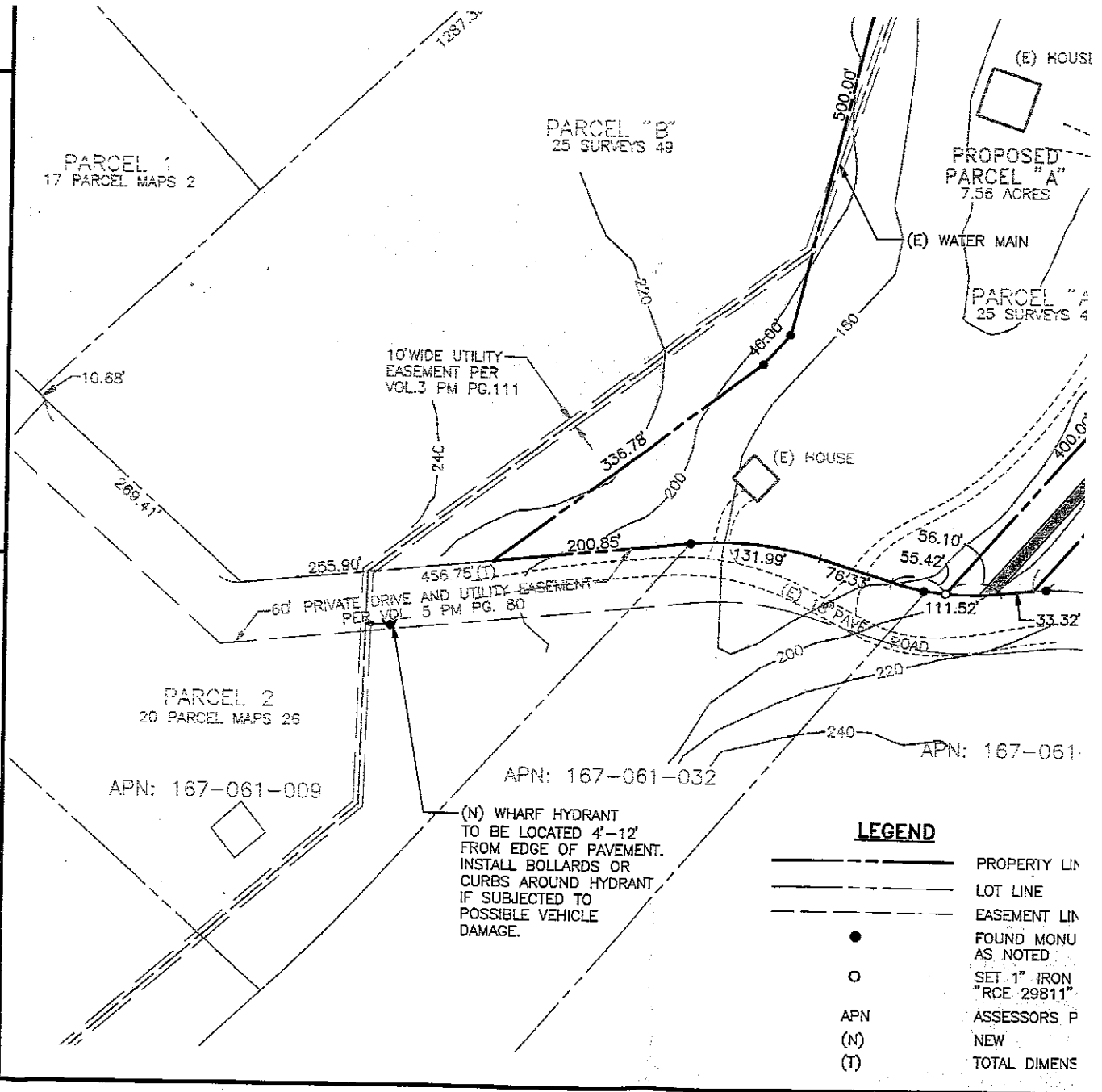
WHARF HYDRANT

NOT TO SCALE



TRENCH DETAIL

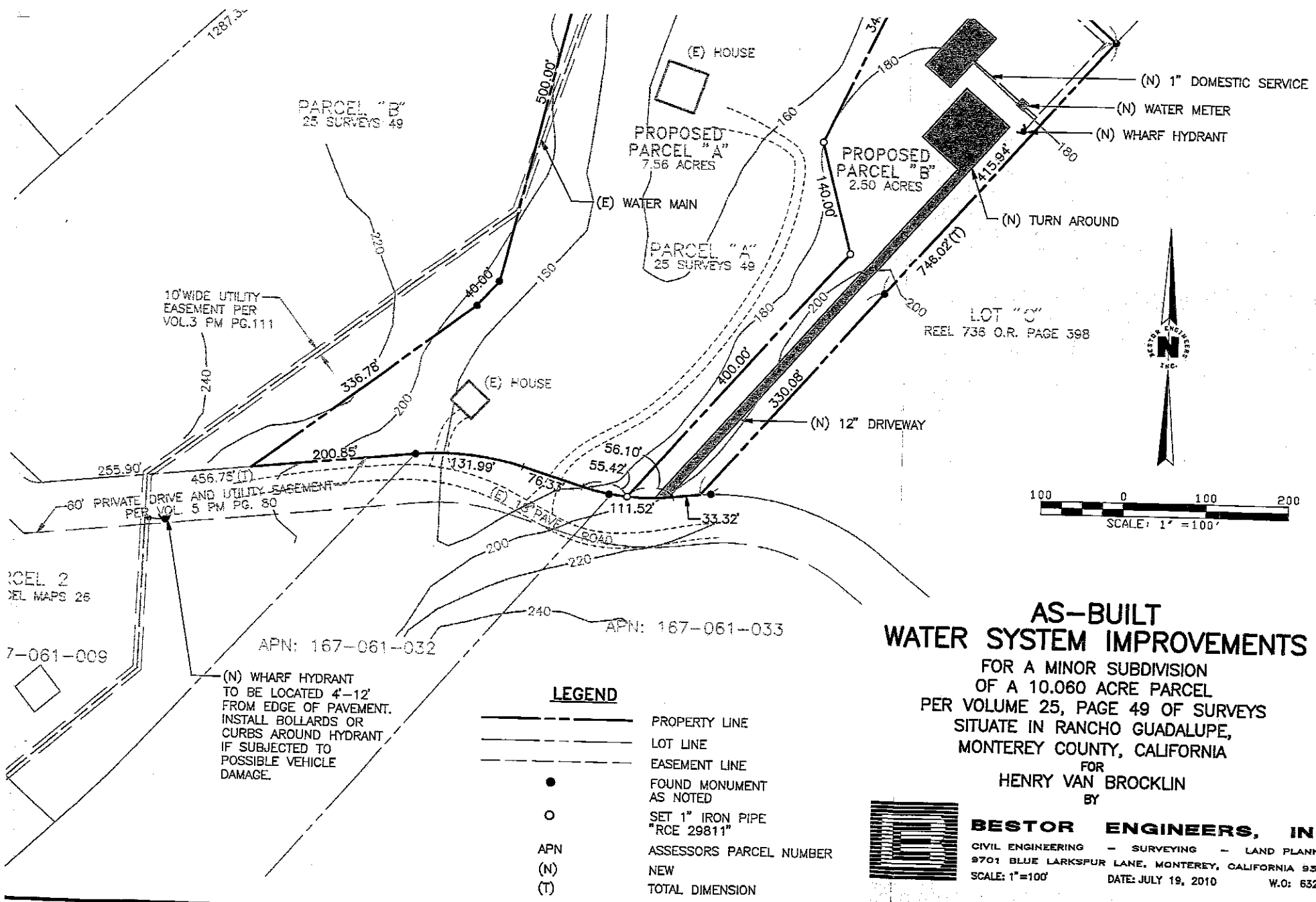
NOT TO SCALE



L:\6328\632801\Draws\Planshts\AS-BUILT W-1.DWG -- platzj -- AUG 05, 2010 -- 13:25:34

LEGEND

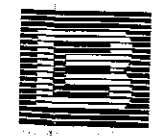
- PROPERTY LINE
- LOT LINE
- EASEMENT LINE
- FOUND MONUMENT AS NOTED
- SET 1" IRON "RCE 29811"
- APN ASSESSOR'S P
- (N) NEW
- (T) TOTAL DIMENS



AS-BUILT WATER SYSTEM IMPROVEMENTS

FOR A MINOR SUBDIVISION OF A 10.060 ACRE PARCEL PER VOLUME 25, PAGE 49 OF SURVEYS SITUATE IN RANCHO GUADALUPE, MONTEREY COUNTY, CALIFORNIA

FOR HENRY VAN BROCKLIN BY



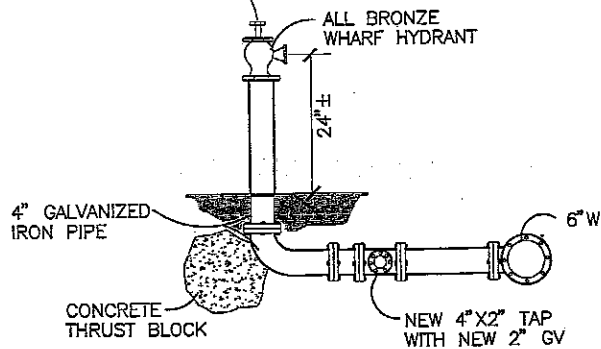
BESTOR ENGINEERS, INC.
 CIVIL ENGINEERING - SURVEYING - LAND PLANNING
 9701 BLUE LARKSPUR LANE, MONTEREY, CALIFORNIA 93940
 SCALE: 1"=100' DATE: JULY 19, 2010 W.O: 6329.01



AS-BUILT SERVICE & HYDRANT

NOT TO SCALE

GREENBERG #123 OR EQUAL,
4" INLET, 2-1/2" HOSE OUTLET,
WITH THREADED CAP

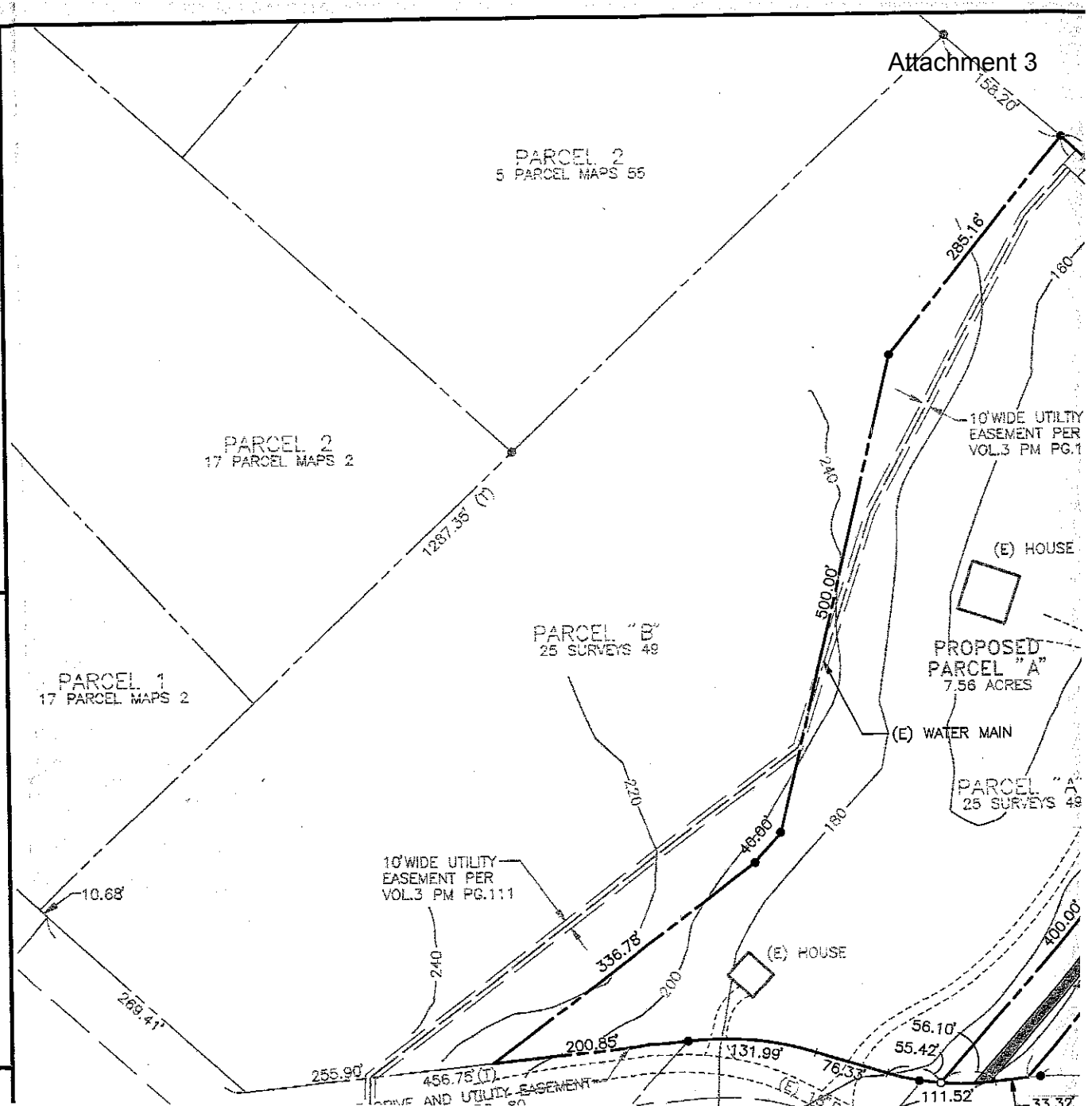


WHARF HYDRANT

NOT TO SCALE

— EXISTING

AUG 05, 2010 - 13:25:34



APN: 167-031-003

PARCEL 2
5 PARCEL MAPS 55

PARCEL 2
7 PARCEL MAPS 2

PARCEL "D"
25 SURVEYS 46

PROPOSED
PARCEL "A"
7.58 ACRES

PROPOSED
PARCEL "B"
2.50 ACRES

PARCEL "A"
25 SURVEYS 49

LOT "C"
REEL 736 O.R. PAGE 398

10' WIDE UTILITY
EASEMENT PER
VOL.3 PM PG.111

10' WIDE UTILITY
EASEMENT PER
VOL.3 PM PG.111

20' WIDE WATERLINE
EASEMENT PER THIS
MAP

- (N) 6" WATER MAIN
- (N) 1" DOMESTIC SERVICE
- (N) WATER METER
- (N) WHARF HYDRANT

(N) TURN AROUND

(N) 12" DRIVEWAY

