

ATTACHMENT E

Vicinity Map

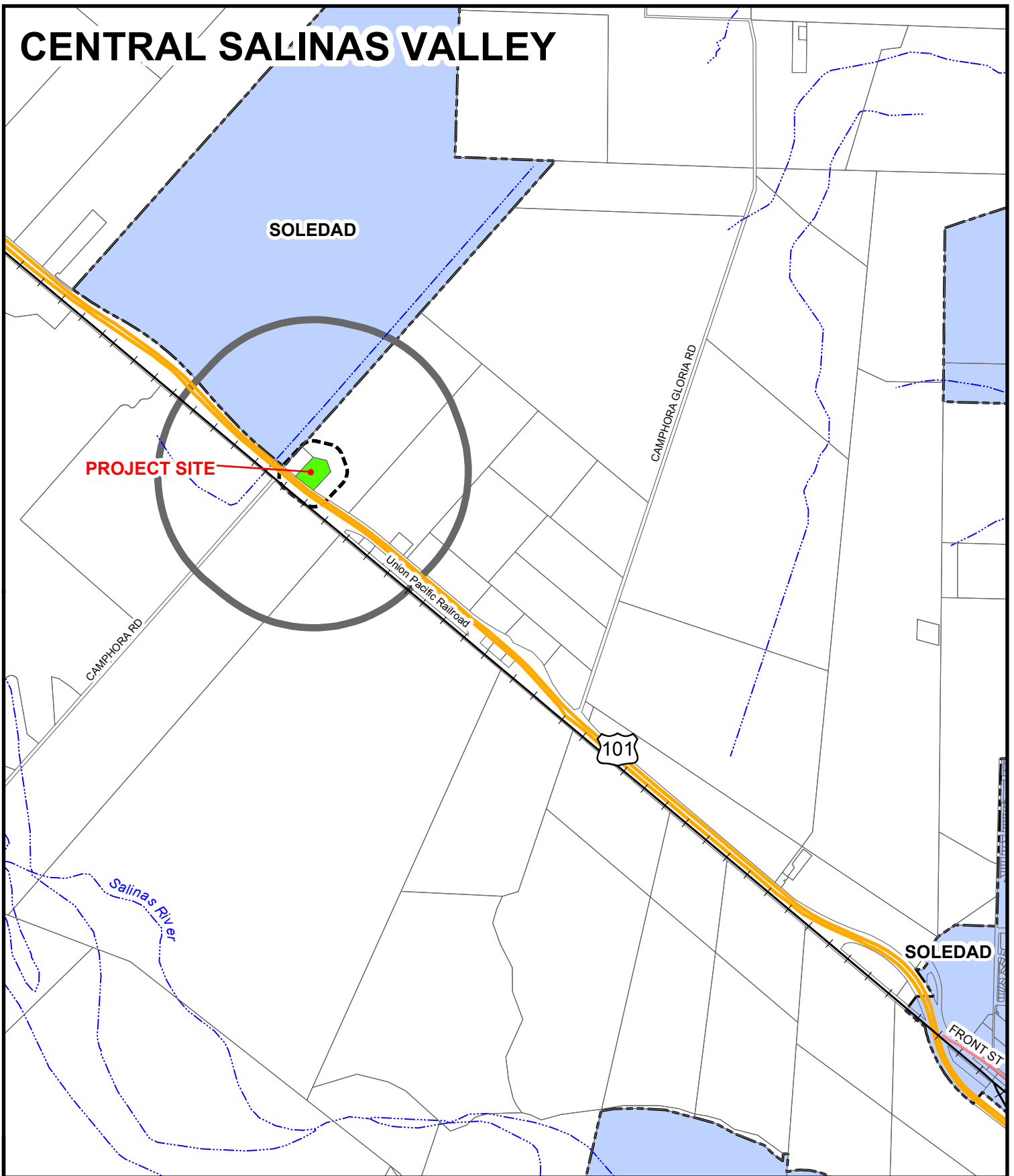
South County Housing Corporation

(Camphora Apartments)

PLN100446



CENTRAL SALINAS VALLEY



APPLICANT: SOUTH COUNTY HOUSING CORP (CAMPHORA APTMNTS)

APN: 257-031-005-000

FILE # PLN100446

Water 2500' Limit 300' Limit City Limits

