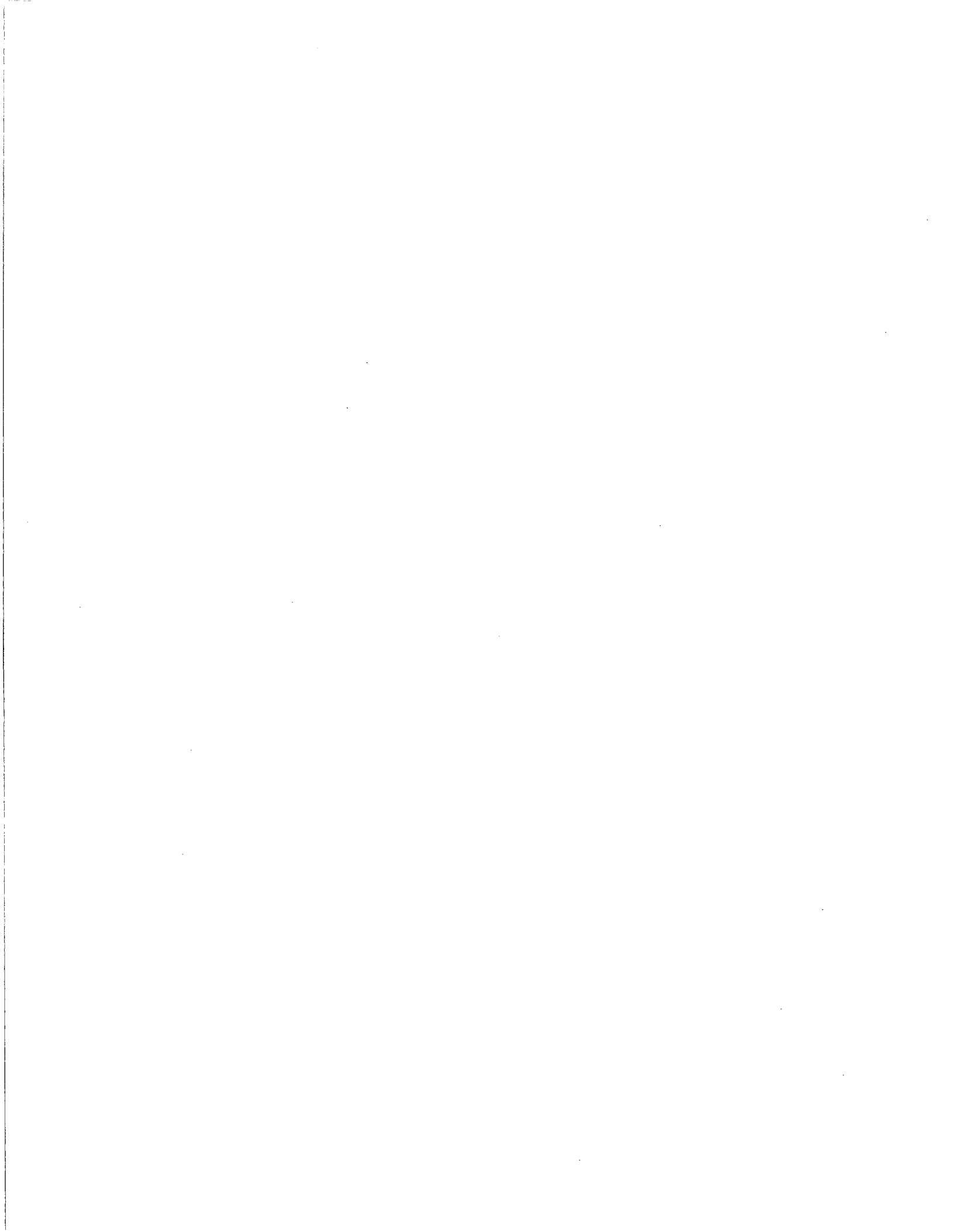
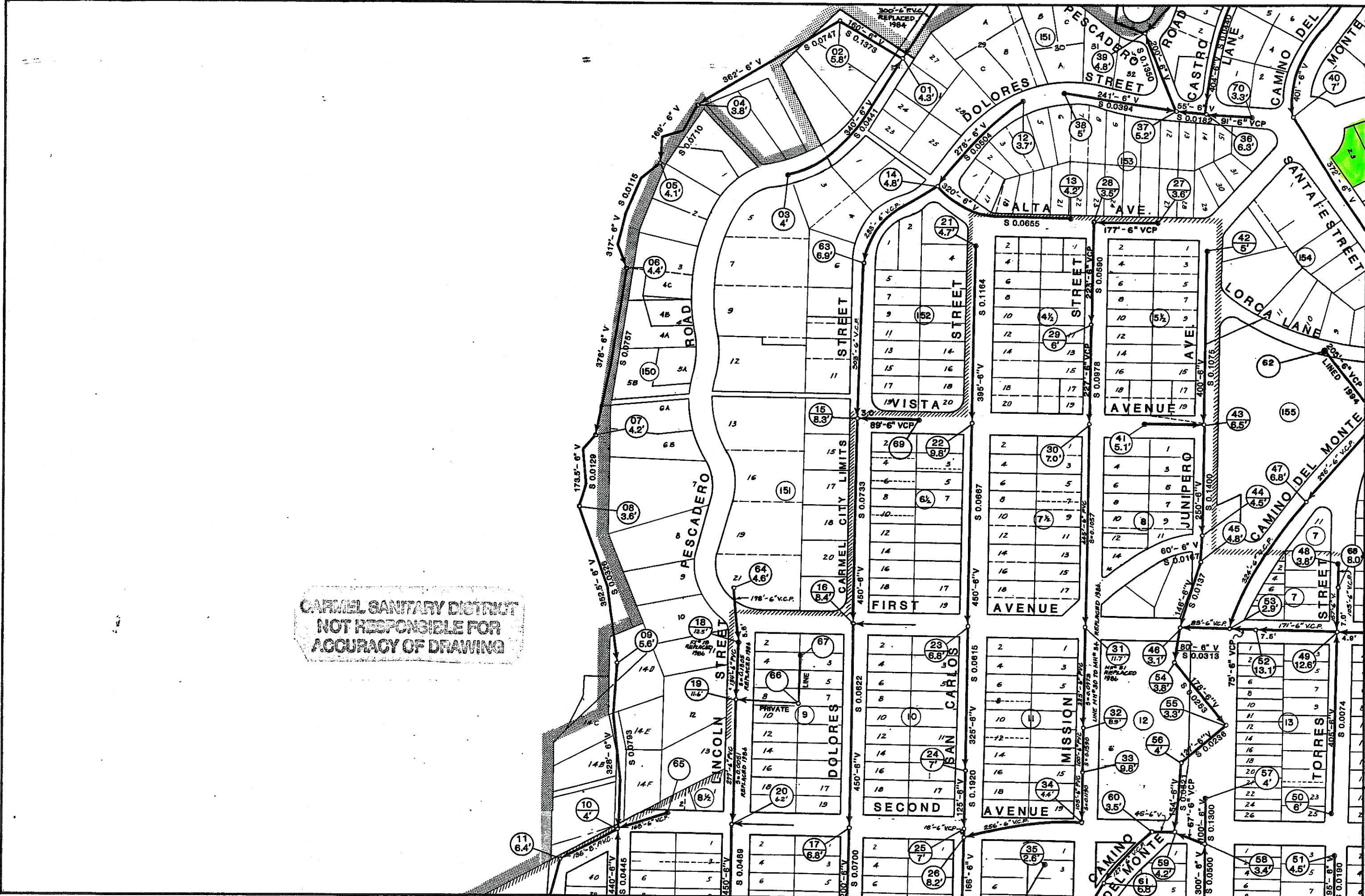


Attachment H
Carmel Area Wastewater District Sewer
Main and Lateral Plan for the project area

PLN110366/PLN110367
Mozingo (Powell)





CARMEL SANITARY DISTRICT
 NOT RESPONSIBLE FOR
 ACCURACY OF DRAWING

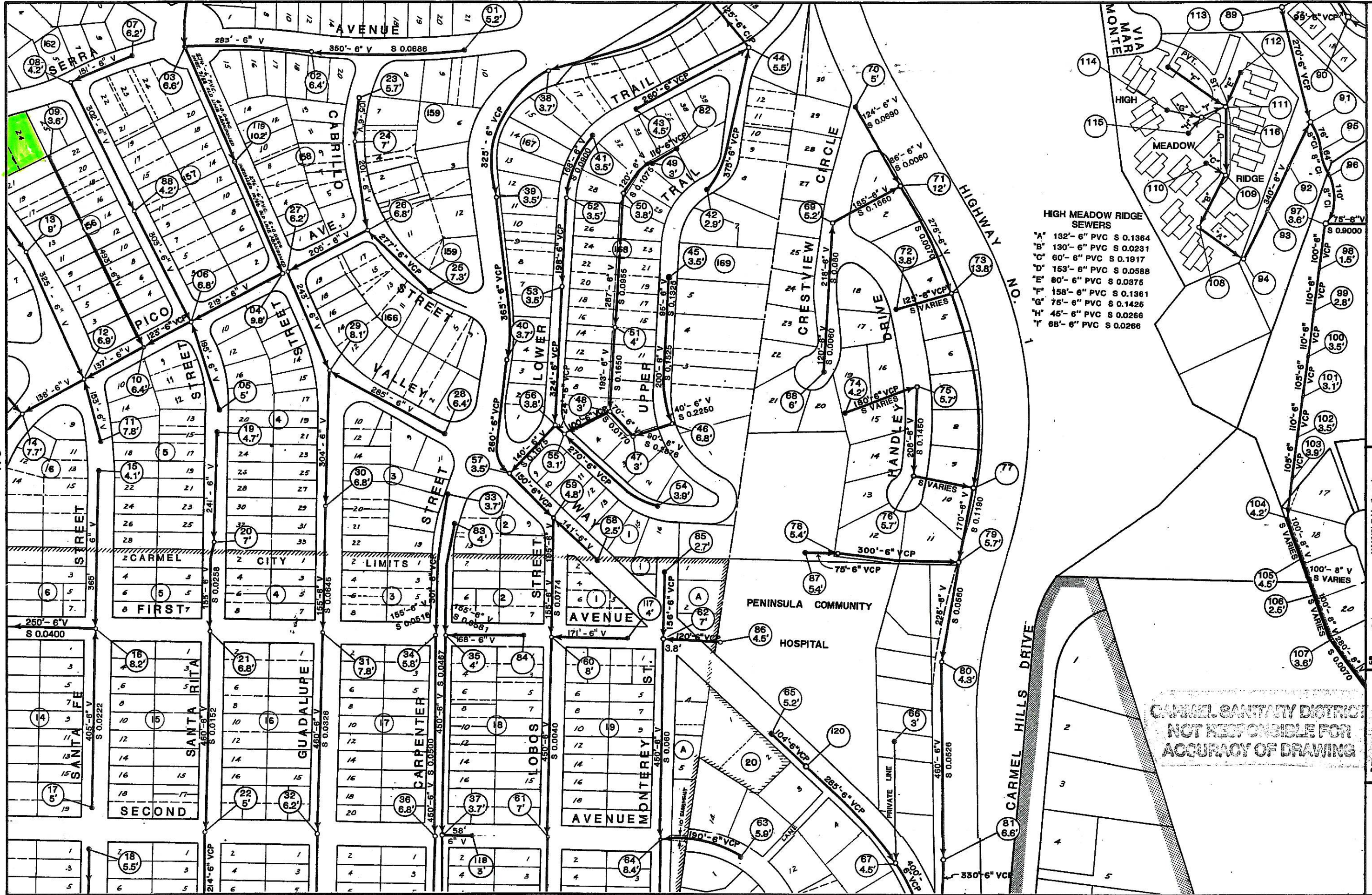
Carmel Sanitary District

N7



N6 7/80
 1" = 100'

REVISED 2/24/84



- HIGH MEADOW RIDGE SEWERS**
- *A 132'-6" PVC S 0.1364
 - *B 130'-6" PVC S 0.0231
 - *C 60'-6" PVC S 0.1917
 - *D 153'-6" PVC S 0.0588
 - *E 80'-6" PVC S 0.0376
 - *F 158'-6" PVC S 0.1361
 - *G 75'-6" PVC S 0.1425
 - *H 45'-6" PVC S 0.0266
 - *I 88'-6" PVC S 0.0266

Carmel Sanitary District

MANHOLE (depth, no.)
 FLUSHING INLET (depth, no.)
 DOUBLE CLEANOUT
 GRAVITY MAIN
 FORCE MAIN



N7 7/80
 1" = 100'
 REVISED 5/17/91