

# Attachment A

This page intentionally left blank.



## Who we are:

The Tatum's Garden Foundation was established in 2013, upon the opening of the award-winning Tatum's Garden playground, with the mission of maintaining Tatum's Garden, and expanding opportunities for inclusive play in the future.

Tatum's Garden is Monterey County's first and only fully accessible and inclusive playground, located on 4 acres in the heart of Salinas.

## The vision of the Foundation is:

Inspiring communities to foster abundant play for children of every ability.



**Our long-term goal is to continue to bring the gift of inclusive play to children all over Monterey County.**

**New Proposal:**

We desire to renovate an existing playground area in Toro County Park, making it both inclusive and accessible, for children and families of all abilities to enjoy.

**Included in our plan:**

- \*Continue our partnership with Leathers and Associates, who has over 45 years of experience designing and building over 3,200 custom playgrounds, including Tatum's Garden, all over the U.S. and 7 other countries.
- \*Raise ALL of the needed funds for development, planning, design, materials, implementation and construction, and seed money for a maintenance fund, through a combination of private donations, grants and fundraisers.
- \*Follow the Community-designed, Community-funded, Community-built model that we recently used for Tatum's Garden, in partnership with Leathers.



## Why Toro County Park?

- \*Much-loved and well-used County Park
- \*Accessibility issues
- \*Lack of inclusive or accessible play areas
- \*Needs “upgrading” of run down infrastructure, especially in high-use areas
- \*Opportunity to make Toro a “destination” park for the entire County and beyond...especially for families or individuals with special needs
- \*Potential to greatly increase revenue for Toro, improving long-term viability and health of the Park
- \*Other planned ADA improvements coming to Toro (ie accessible trail to Marks Ranch)



# A “Leathers” Playground: Safe, Unique and Built to Last

## Materials

Custom-built with structural and composite recycled plastic (more than 95% recycled)

## Safety

- ASTM & CPSC standards
- NPSI – Nationally certified
- Meets and exceeds ADA

## Design

- Easy to maintain
- Designed by our community, to reflect our community
- Superior visibility/supervision
- Developmental/age appropriateness
- Accessible and inclusive play





# Leathers: Experience with County Projects Across the U.S.

Spartanburg County, South Carolina  
Opened Spring 2016



Horry County, South Carolina  
Grand Opening Coming in June 2016





## Projected Process:

### \*Pre-design Phase

- choose location
- identify possible impacts, brainstorm mitigation
- formulate “theme” for playground
- build Steering Committee

### \*Design Phase

- receive County input regarding layout, theme
- invite Committee input regarding design, components
- seek creative input from children all over Monterey County
- Leathers Designers travel here and develop unique, custom, one-of-a-kind playground designed by the community
- Design fleshed-out if necessary
- Design unveiled to the Community at Design Day Event
- Project Budget Developed

### \*Fundraising & Volunteer-raising Begins

- with design in-hand, fundraising and volunteer-recruiting efforts start in full force

### \*Organization Phase

- reviews of site, construction drawings
- strategize setup of construction site
- train leaders of community build
- organize and collect tool donations

### \*Construction Phase

- Pre-construction punch list
- Categorize volunteers – age/skill
- Site captains & Leathers Staff
- Community Build Week

### \*Post-Construction Phase

- PIP rubber surfacing installation
- long-term maintenance plan in place

## Proposed Option A:

Create a one-of-a-kind, inclusive, accessible recreation and play experience, within Toro County Park, that invites multi-generational use, while renovating multiple areas.





## Overview of Option A:

This first option would include a smaller playground in the front area of the park, and a large playground renovation in the Quail Meadows Recreation area further into the park. These two playgrounds would be joined together by an accessible multi-use path along the road, expanding the accessibility and inclusivity of Toro Park tremendously, with “multi-generational inclusivity!”

Quail Meadows

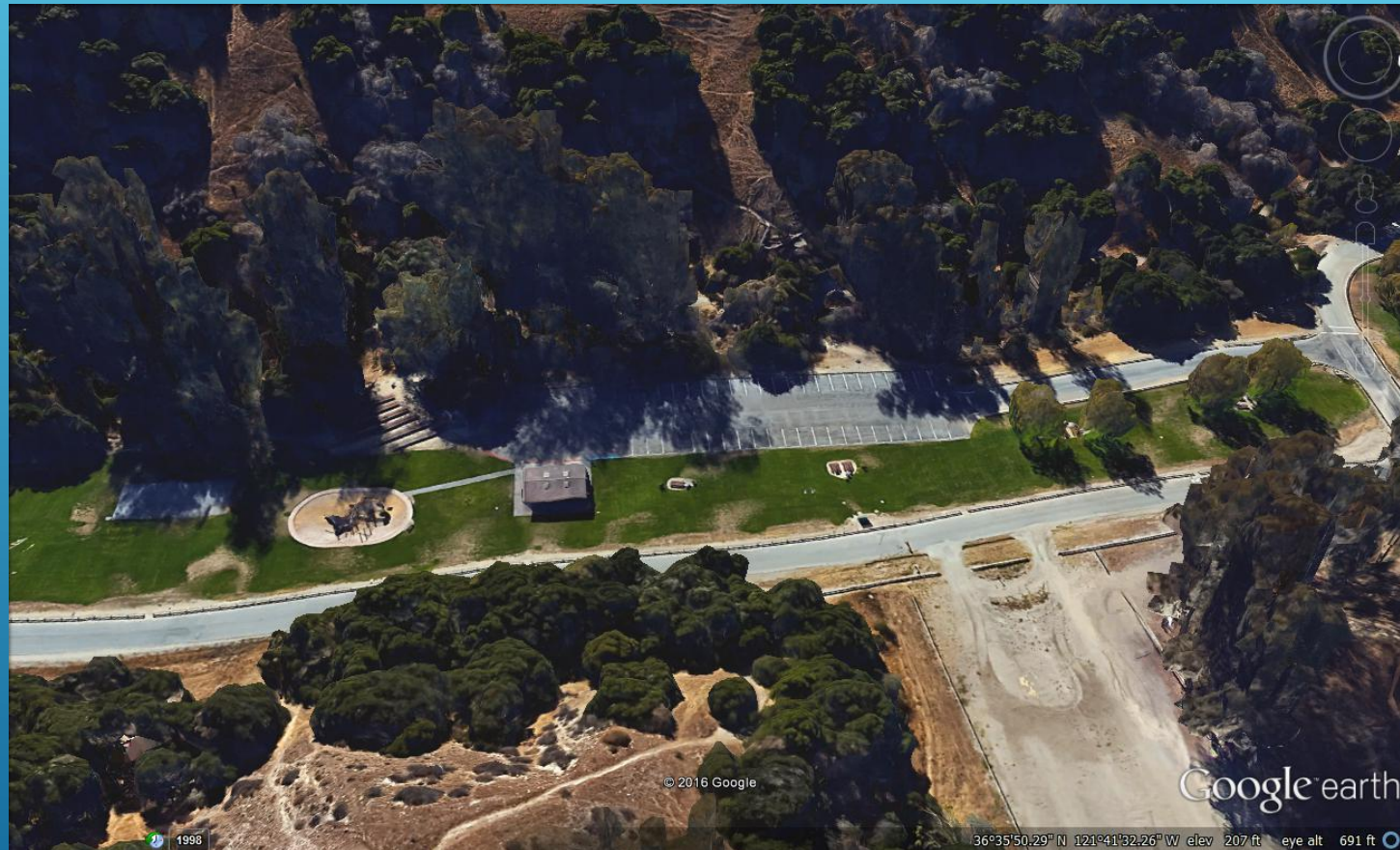
Front area





## Proposed Option B:

Create a fun, inviting fully-accessible and inclusive playground, by renovating the Quail Meadows Recreation Area.



## Predicting Possible Impacts and Areas of Importance:

### **Potential Impacts:**

- environmental
- water quality & service
- traffic & parking
- noise and visual impacts

### **Usage:**

- look at capacity levels
- compare current vs predicted
- protection of current use such as Cross Country Course, open spaces, BBQ areas, etc.

### **Maintain and Enhance Park Character & Resources:**

- natural/native
- cultural
- recreational
- educational opportunities

**\*\*Your help in identifying potential benefits and challenges in advance enables us to plan accordingly to meet those needs/challenges. We are no strangers to overcoming challenges!**

This page intentionally left blank.