

CA Board of Forestry and Fire Protection Fire Safe Regulations

June 15, 2021

John Dugan, FAICP

Mike Novo, AICP

Today's Actions

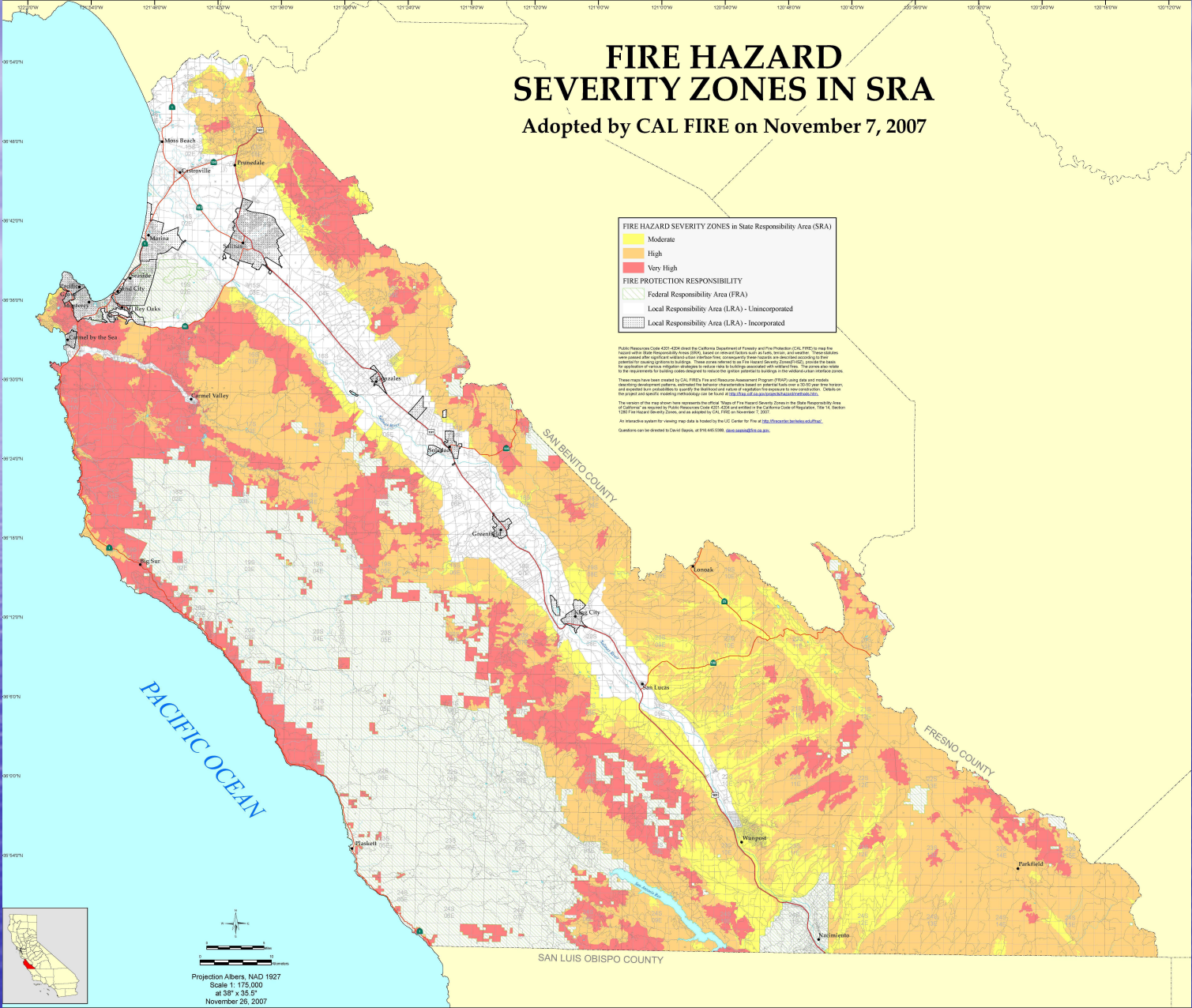
- Receive an update on proposed State Board of Forestry and Fire Protection draft Minimum Fire Safe Regulations
- Authorize the Chair to sign and transmit a letter providing the County's comments to the State Board of Forestry and Fire Protection

Existing State Regulations

- Adopted in 1991
- Applicable to State Responsibility Areas
- On-Site Requirements
- Off-Site Requirements
- SB901
 - July 1, 2021—applicable to Very High Fire Hazard Severity Zones

FIRE HAZARD SEVERITY ZONES IN SRA

Adopted by CAL FIRE on November 7, 2007



Projection Albers, NAD 1927
Scale 1:175,000
at 37° x 35.5"
November 26, 2007

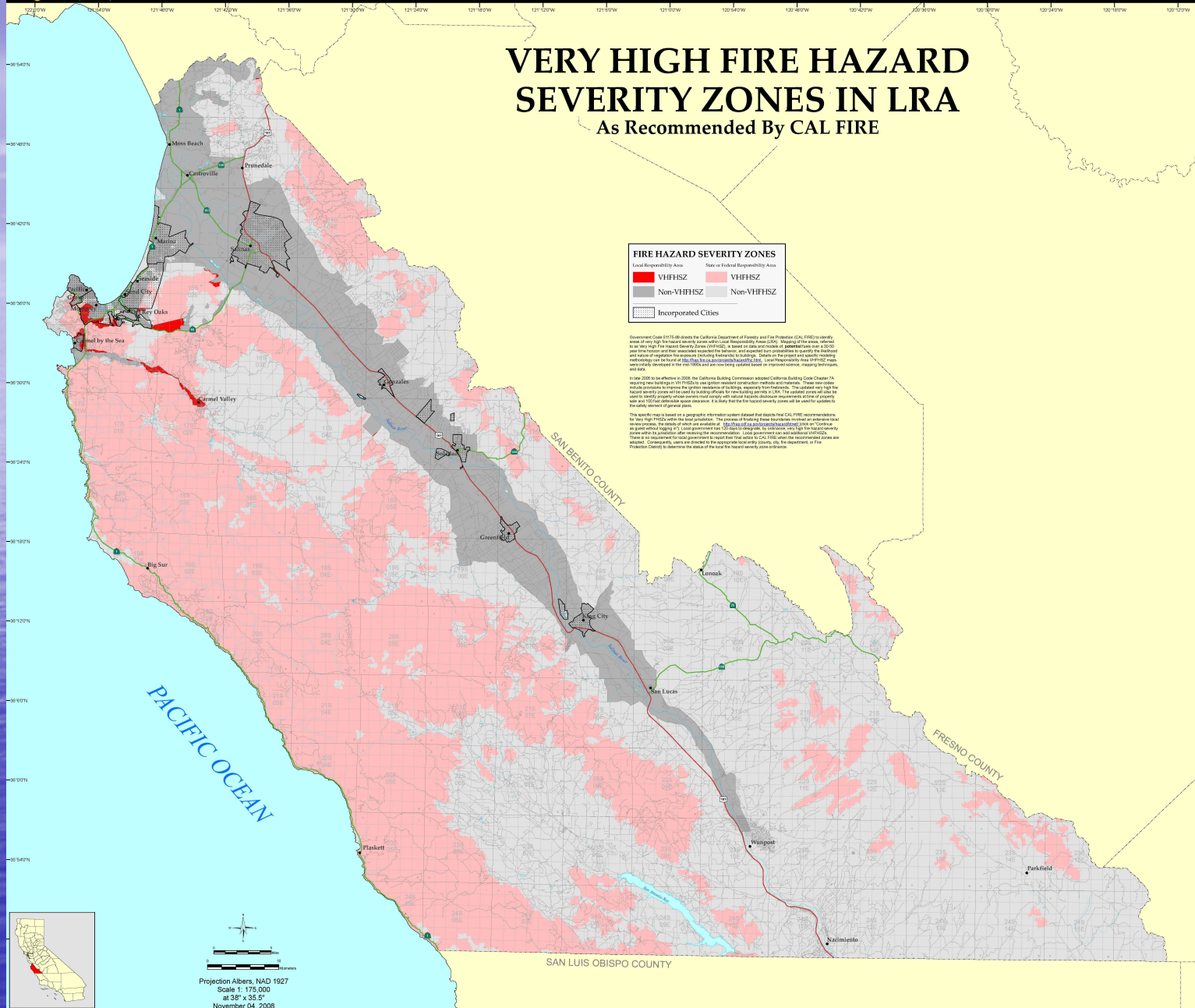
The State of California and the Department of Forestry and Fire Protection make no representations or warranties regarding the accuracy of data or maps. Neither the State nor the Department shall be liable under any circumstances for any direct, special, incidental, or consequential damages with respect to any claim by any user or third party on account of, or arising from, the use of data or maps.

Obtain FRAP maps, data, metadata and publications on the Internet at <http://frap.cdf.ca.gov>
For more information, contact CAL FIRE-FRAP, PO Box 944246, Sacramento, CA 94244-2460, (916) 327-3939.

Arnold Schwarzenegger, Governor,
State of California
Mike Chrisman, Secretary for Resources,
The Resources Agency
Ruben Grigalva, Director,
Department of Forestry and Fire Protection

MAP ID: FHSZS.MAP
DATA SOURCES
CAL FIRE Fire Hazard Severity Zones (FHSZS06_3)
CAL FIRE State Responsibility Areas (SRAS06_3)
CAL FIRE Incorporated Cities (Incorp07_3)
PLSS (1:100,000 USGS, Land Grants with CAL FIRE grid)

VERY HIGH FIRE HAZARD SEVERITY ZONES IN LRA As Recommended By CAL FIRE



FIRE HAZARD SEVERITY ZONES

Local Responsibility Area State or Federal Responsibility Area

■ VHFHSZ ■ VHFHSZ

■ Non-VHFHSZ ■ Non-VHFHSZ

■ Incorporated Cities

Government Code 01713.00 directs the California Department of Forestry and Fire Protection (CAL FIRE) to develop areas of very high fire hazard severity zones (VHFHSZ) in the Incorporated Areas (IAs), Special Use Areas, unincorporated areas, and areas within the State Responsibility Areas (SRAs). Areas of very high fire hazard severity zones are those areas where the fire hazard severity is very high and the fire hazard severity is very high. Areas of very high fire hazard severity zones are those areas where the fire hazard severity is very high and the fire hazard severity is very high. Areas of very high fire hazard severity zones are those areas where the fire hazard severity is very high and the fire hazard severity is very high.

In 2008, the California Building Commission adopted California Building Code Chapter 7A regarding fire hazard severity zones (VHFHSZ) in unincorporated areas and incorporated areas. These new codes include provisions to improve the public resilience of buildings, wherever they are located. The updated very high fire hazard severity zones are based on the fire hazard severity zones (VHFHSZ) in the State Responsibility Areas (SRAs) and the fire hazard severity zones (VHFHSZ) in the Incorporated Areas (IAs). The updated very high fire hazard severity zones are based on the fire hazard severity zones (VHFHSZ) in the State Responsibility Areas (SRAs) and the fire hazard severity zones (VHFHSZ) in the Incorporated Areas (IAs).

This map is based on a geographic information system dataset that depicts the CAL FIRE recommended very high fire hazard severity zones (VHFHSZ) in the Incorporated Areas (IAs) and the fire hazard severity zones (VHFHSZ) in the State Responsibility Areas (SRAs). The information on this map is for informational purposes only and is not intended to be used for any other purpose. The information on this map is for informational purposes only and is not intended to be used for any other purpose. The information on this map is for informational purposes only and is not intended to be used for any other purpose.

The State of California and the Department of Forestry and Fire Protection make no representations or warranties regarding the accuracy of data or maps. Neither the State nor the Department shall be liable under any circumstances for any direct, special, incidental, or consequential damages with respect to any claim by any user or third party on account of, or arising from, the use of data or maps.

Obtain FRAP maps, data, metadata and publications on the Internet at <http://rap.cdf.ca.gov>
 For more information, contact CAL FIRE-FRAP, PO Box 944246, Sacramento, CA 94244-2460, (916) 327-3939.

Arnold Schwarzenegger, Governor,
 State of California
 Mike Christman, Secretary for Resources,
 The Resources Agency
 Robert Grady, Director,
 Department of Forestry and Fire Protection

MAP ID: FHSZ_MAP
 DATA SOURCES
 CAL FIRE Fire Hazard Severity Zones (FHSZ) 08_3
 CAL FIRE State Responsibility Areas (SRAs) 08_3
 CAL FIRE Incorporated Cities (Incorp) 08_3
 PLS (1:100,000 USGS, Land Grants with CAL FIRE grid)

Local Control--Existing

General Plan

Coastal Program

Hazard Mitigation Plan

Ordinances

- Building
- Planning

Thorough Application Review

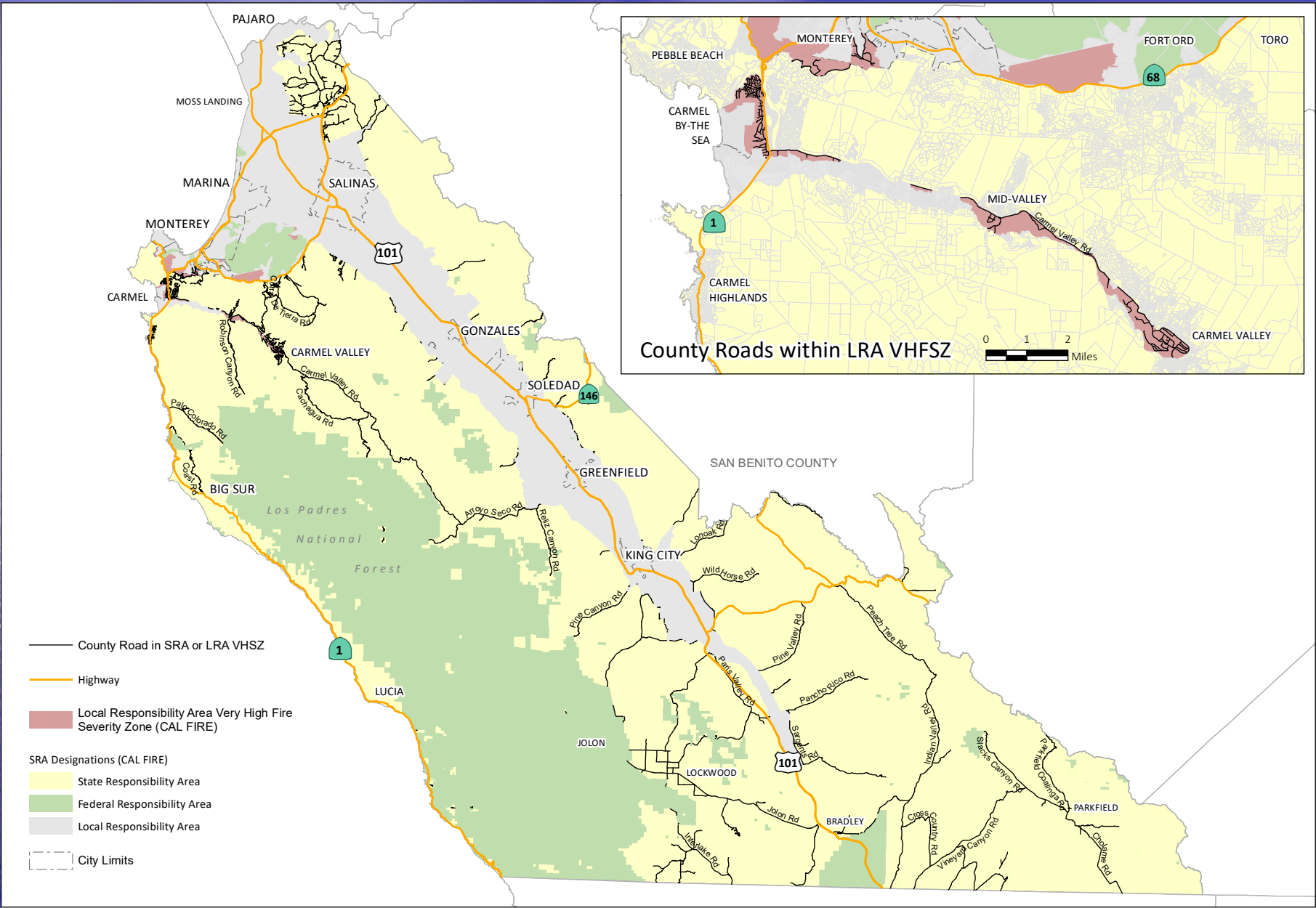
Proposed State Regulations

- Geographic Area
 - Applicable to State Responsibility Area
 - Applicable to Local Responsibility Area
 - Very High Fire Hazard Zone
- On-Site Requirements
- Off-Site Requirements
- Comments Due June 22, 2021
 - Public Hearing on Proposed Regulations

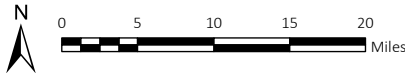
Off-Site Requirements-Proposed

Ingress and Egress—Public and Private

- Width
 - 20 foot requirement—new roads or intensification of use
 - 14 foot requirement—existing roads
- Length for Proposed Roads
 - Maximum 1/2 mile
 - As short as 800 feet for denser areas
 - Commercial and Industrial (cumulative)
- Bridges



County Roads within SRA and LRA VHFSZ



On-Site Requirements-Proposed

- Building Code—Separate Law
- Water Supply
- Setbacks
- Fuel Management
- Driveways

County Concerns--Roads

- Road Width
 - Existing (14 feet)
 - Proposed (20 feet)
- Road Length (maximum 1/2 mile)
- Weight Requirements (75,000 pounds)
 - Roads
 - Bridges
- Surfacing

County Concerns--Process

- Exceptions (like a Variance)
 - Significant Number of Exceptions
 - Workload
 - Appeals
 - Applicant Uncertainty and Cost
- Liability Pushed to County
 - Exceptions
 - Strategic Ridgelines

County Concerns--Other

- Effective Date
- Strategic Ridgelines
 - Designated Locally
 - Prohibition on Development
- Unclear Language
 - Not Meeting Stated Intent
 - General

Other Agency Coordination

California State Association of Counties

CA County Planning Directors Association

Rural County Representatives of California—
Coordinated Suggested Modifications

Recommendation

- a. Receive an update on proposed State Board of Forestry draft regulations amending State Minimum Fire Safe Regulations; and
- b. Approve and Authorize the Chair of the Board of Supervisors to sign and transmit a letter to the State Board of Forestry providing the County's comments on the draft amendments to the State Minimum Fire Safe Regulations.