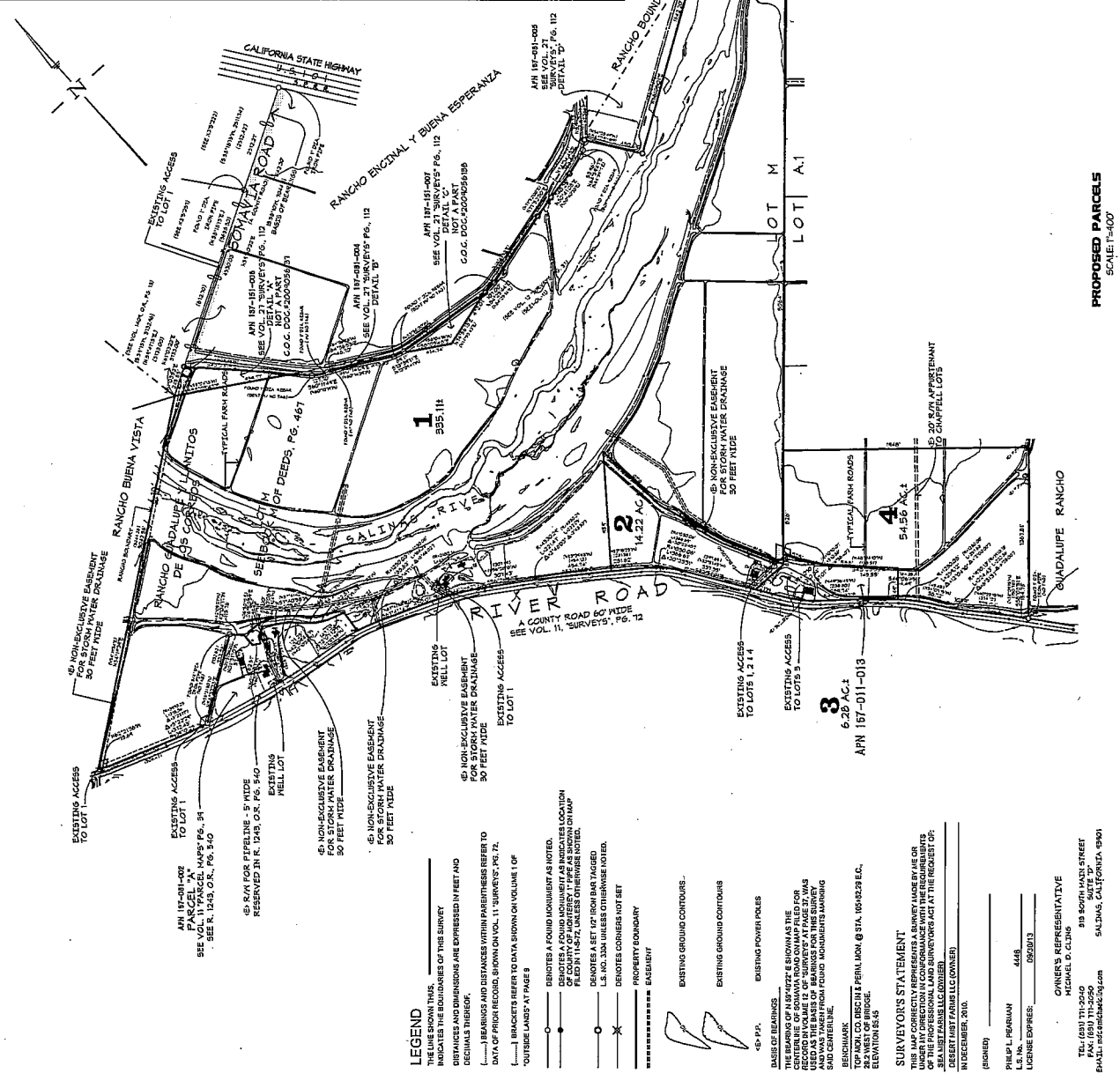
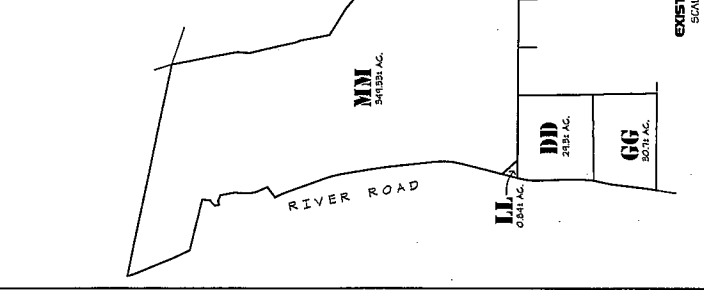
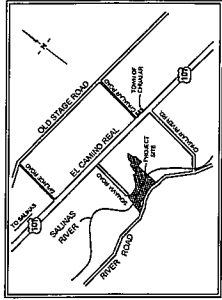


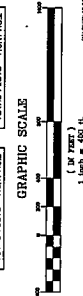
Attachment C
Lot Line Adjustment Map

Sea Mist Farms LLC
Desert Mist LLC
Desert Mist Farms LLC
PLN120746



LOT LINE ADJUSTMENT

EXISTING LOT	PROPOSED PARCELS	EXISTING LOTS	ESTIMATED SURFACE AREA
SEA MST FARMS, LLC	1	SEA MST FARMS, LLC	395.11 AC.
DESERT MST FARMS, LLC	2	DESERT MST FARMS, LLC	14.22 AC.
SEA MST FARMS, LLC	3	SEA MST FARMS, LLC	6.20 AC.
DESERT MST FARMS, LLC	4	DESERT MST FARMS, LLC	54.56 AC.
TOTAL LOTS = 4		TOTAL LOTS = 4	
TOTAL AREA = 466.09 AC.		TOTAL AREA = 466.09 AC.	



LEGEND

- THE LINE SHOWN THIS INDICATES THE BOUNDARIES OF THIS SURVEY
- DISTANCES AND DIMENSIONS ARE EXPRESSED IN FEET AND DECIMALS THEREOF.
- BEARINGS AND DISTANCES WITHIN PARENTHESES REFER TO DATA OF PRIOR RECORD, SHOWN ON VOLUME 11, SURVEYS, PG. 72.
- [] BRACKETS REFER TO DATA SHOWN ON VOLUME 1 OF 'OUTSIDE LANDS' AT PAGE 8
- REFLECTS A SOUND KNOWLEDGE AS NOTED.
- REFLECTS A SOUND KNOWLEDGE AS NOTED.
- REFLECTS A SOUND KNOWLEDGE AS NOTED.
- DENOTES A POINT OF INTEREST AS SHOWN ON MAP FILED IN 1954, UNLESS OTHERWISE NOTED.
- DENOTES A POINT OF INTEREST AS SHOWN ON MAP FILED IN 1954, UNLESS OTHERWISE NOTED.
- DENOTES CORNERS NOT SET.
- PROPERTY BOUNDARY
- EASEMENT
- EXISTING GROUND CONTOURS
- EXISTING GROUND CONTOURS
- EXISTING POWER POLES
- BASE OF BEARINGS
- THE BEARING OF EACH LOT IS SHOWN AS THE CENTERLINE OF BOWMAN ROAD OWNED BY SEA MST FARMS, LLC AND DESERT MST FARMS, LLC AND WAS TAKEN FROM FOUND MONUMENTS MARKING THE BOUNDARY.
- TOP AND BOTTOM CORNERS OF STA. 108+52.83 E.C. 282 WEST OF BRIDGE.
- ELEVATIONS

SURVEYOR'S STATEMENT

THIS MAP CORRECTLY REPRESENTS A SURVEY MADE BY ME OR UNDER MY DIRECTION IN CONFORMANCE WITH THE REQUIREMENTS OF THE SURVEYING ACT AS THEY APPLY AT THE REQUEST OF: SEA MST FARMS LLC (OWNER).

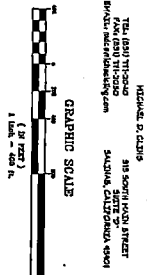
SEA MST FARMS LLC (OWNER)

IN DECEMBER, 2010.

(SIGNER)

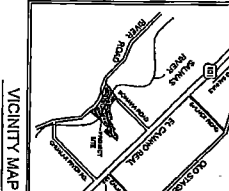
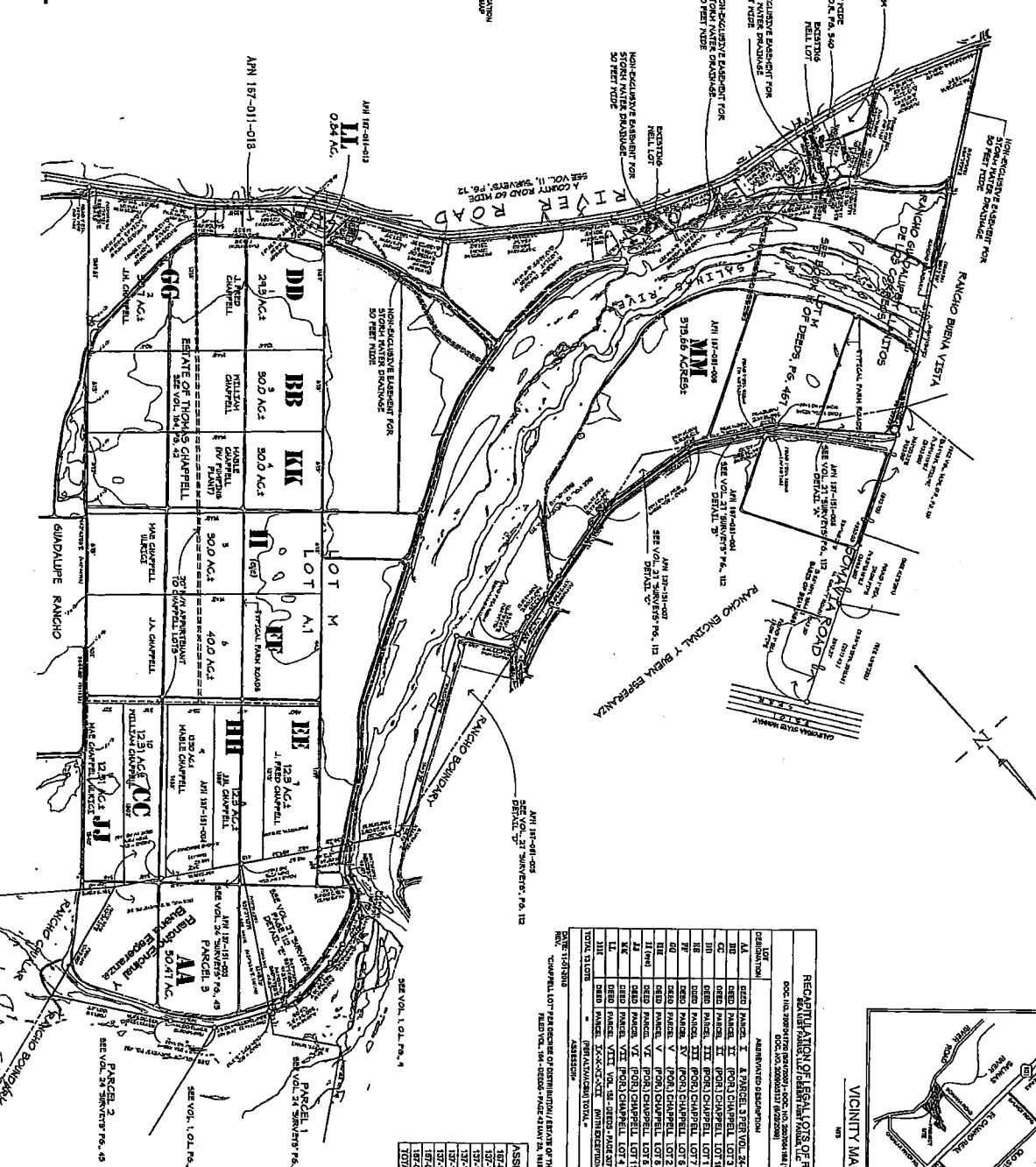
PHILIP L. PERMAN
 L.S. NO. _____
 LICENSE DATES: _____

GINNERS REPRESENTATIVE
 MICHAEL D. CLINE
 218 SOUTH HAZEL STREET
 SUITE 20
 SALINAS, CALIFORNIA 93901



OWNER'S REPRESENTATIVE
 MICHAEL D. CLINE
 815 NORTH KAY STREET
 SACRAMENTO, CALIFORNIA 95811
 BRIDGE@MDSURVEYORS.COM

LEGEND
 THE LINE FROM THIS...
 INDICATES THE BOUNDARIES OF THE SURVEY.
 OPERATIONS AND ENCUMBRANCES ARE EXPRESSED BY REFERENCE
 TO THE RECORDING INSTRUMENTS WHICH REFER TO THE
 ORIGINAL RECORD.
 (1) A BOUNDARY LOCATION FROM AN INSTRUMENT REFERRED TO
 BY A REFERENCE TO A RECORDING INSTRUMENT IS SHOWN BY A
 DASHED LINE.
 (2) A BOUNDARY LOCATION FROM AN INSTRUMENT REFERRED TO
 BY A REFERENCE TO A RECORDING INSTRUMENT IS SHOWN BY A
 SOLID LINE.
 (3) A BOUNDARY LOCATION FROM AN INSTRUMENT REFERRED TO
 BY A REFERENCE TO A RECORDING INSTRUMENT IS SHOWN BY A
 DOTTED LINE.
 (4) A BOUNDARY LOCATION FROM AN INSTRUMENT REFERRED TO
 BY A REFERENCE TO A RECORDING INSTRUMENT IS SHOWN BY A
 DASHED LINE WITH A CENTER LINE.
 (5) A BOUNDARY LOCATION FROM AN INSTRUMENT REFERRED TO
 BY A REFERENCE TO A RECORDING INSTRUMENT IS SHOWN BY A
 DOTTED LINE WITH A CENTER LINE.
 (6) A BOUNDARY LOCATION FROM AN INSTRUMENT REFERRED TO
 BY A REFERENCE TO A RECORDING INSTRUMENT IS SHOWN BY A
 DASHED LINE WITH A CENTER LINE AND A DOTTED LINE.
 (7) A BOUNDARY LOCATION FROM AN INSTRUMENT REFERRED TO
 BY A REFERENCE TO A RECORDING INSTRUMENT IS SHOWN BY A
 DOTTED LINE WITH A CENTER LINE AND A DASHED LINE.
 (8) A BOUNDARY LOCATION FROM AN INSTRUMENT REFERRED TO
 BY A REFERENCE TO A RECORDING INSTRUMENT IS SHOWN BY A
 DOTTED LINE WITH A CENTER LINE AND A DOTTED LINE.
 (9) A BOUNDARY LOCATION FROM AN INSTRUMENT REFERRED TO
 BY A REFERENCE TO A RECORDING INSTRUMENT IS SHOWN BY A
 DOTTED LINE WITH A CENTER LINE AND A DOTTED LINE.
 (10) A BOUNDARY LOCATION FROM AN INSTRUMENT REFERRED TO
 BY A REFERENCE TO A RECORDING INSTRUMENT IS SHOWN BY A
 DOTTED LINE WITH A CENTER LINE AND A DOTTED LINE.



RECAPITULATION OF LEGAL LOTS OF RECORD
 DOC. NO. 157-011-018, 157-011-019, 157-011-020, 157-011-021, 157-011-022, 157-011-023, 157-011-024, 157-011-025, 157-011-026, 157-011-027, 157-011-028, 157-011-029, 157-011-030, 157-011-031, 157-011-032, 157-011-033, 157-011-034, 157-011-035, 157-011-036, 157-011-037, 157-011-038, 157-011-039, 157-011-040, 157-011-041, 157-011-042, 157-011-043, 157-011-044, 157-011-045, 157-011-046, 157-011-047, 157-011-048, 157-011-049, 157-011-050, 157-011-051, 157-011-052, 157-011-053, 157-011-054, 157-011-055, 157-011-056, 157-011-057, 157-011-058, 157-011-059, 157-011-060, 157-011-061, 157-011-062, 157-011-063, 157-011-064, 157-011-065, 157-011-066, 157-011-067, 157-011-068, 157-011-069, 157-011-070, 157-011-071, 157-011-072, 157-011-073, 157-011-074, 157-011-075, 157-011-076, 157-011-077, 157-011-078, 157-011-079, 157-011-080, 157-011-081, 157-011-082, 157-011-083, 157-011-084, 157-011-085, 157-011-086, 157-011-087, 157-011-088, 157-011-089, 157-011-090, 157-011-091, 157-011-092, 157-011-093, 157-011-094, 157-011-095, 157-011-096, 157-011-097, 157-011-098, 157-011-099, 157-011-100, 157-011-101, 157-011-102, 157-011-103, 157-011-104, 157-011-105, 157-011-106, 157-011-107, 157-011-108, 157-011-109, 157-011-110, 157-011-111, 157-011-112, 157-011-113, 157-011-114, 157-011-115, 157-011-116, 157-011-117, 157-011-118, 157-011-119, 157-011-120, 157-011-121, 157-011-122, 157-011-123, 157-011-124, 157-011-125, 157-011-126, 157-011-127, 157-011-128, 157-011-129, 157-011-130, 157-011-131, 157-011-132, 157-011-133, 157-011-134, 157-011-135, 157-011-136, 157-011-137, 157-011-138, 157-011-139, 157-011-140, 157-011-141, 157-011-142, 157-011-143, 157-011-144, 157-011-145, 157-011-146, 157-011-147, 157-011-148, 157-011-149, 157-011-150, 157-011-151, 157-011-152, 157-011-153, 157-011-154, 157-011-155, 157-011-156, 157-011-157, 157-011-158, 157-011-159, 157-011-160, 157-011-161, 157-011-162, 157-011-163, 157-011-164, 157-011-165, 157-011-166, 157-011-167, 157-011-168, 157-011-169, 157-011-170, 157-011-171, 157-011-172, 157-011-173, 157-011-174, 157-011-175, 157-011-176, 157-011-177, 157-011-178, 157-011-179, 157-011-180, 157-011-181, 157-011-182, 157-011-183, 157-011-184, 157-011-185, 157-011-186, 157-011-187, 157-011-188, 157-011-189, 157-011-190, 157-011-191, 157-011-192, 157-011-193, 157-011-194, 157-011-195, 157-011-196, 157-011-197, 157-011-198, 157-011-199, 157-011-200.

ASSESSOR'S AREAS

157-011-008	2487 AC
157-011-009	2312 AC
157-011-010	1841 AC
157-011-011	2023 AC
157-011-012	2176 AC
157-011-013	1842 AC
157-011-014	2234 AC
157-011-015	2024 AC
157-011-016	2024 AC
157-011-017	2024 AC
157-011-018	2024 AC
157-011-019	2024 AC
157-011-020	2024 AC
157-011-021	2024 AC
157-011-022	2024 AC
157-011-023	2024 AC
157-011-024	2024 AC
157-011-025	2024 AC
157-011-026	2024 AC
157-011-027	2024 AC
157-011-028	2024 AC
157-011-029	2024 AC
157-011-030	2024 AC
157-011-031	2024 AC
157-011-032	2024 AC
157-011-033	2024 AC
157-011-034	2024 AC
157-011-035	2024 AC
157-011-036	2024 AC
157-011-037	2024 AC
157-011-038	2024 AC
157-011-039	2024 AC
157-011-040	2024 AC
157-011-041	2024 AC
157-011-042	2024 AC
157-011-043	2024 AC
157-011-044	2024 AC
157-011-045	2024 AC
157-011-046	2024 AC
157-011-047	2024 AC
157-011-048	2024 AC
157-011-049	2024 AC
157-011-050	2024 AC
157-011-051	2024 AC
157-011-052	2024 AC
157-011-053	2024 AC
157-011-054	2024 AC
157-011-055	2024 AC
157-011-056	2024 AC
157-011-057	2024 AC
157-011-058	2024 AC
157-011-059	2024 AC
157-011-060	2024 AC
157-011-061	2024 AC
157-011-062	2024 AC
157-011-063	2024 AC
157-011-064	2024 AC
157-011-065	2024 AC
157-011-066	2024 AC
157-011-067	2024 AC
157-011-068	2024 AC
157-011-069	2024 AC
157-011-070	2024 AC
157-011-071	2024 AC
157-011-072	2024 AC
157-011-073	2024 AC
157-011-074	2024 AC
157-011-075	2024 AC
157-011-076	2024 AC
157-011-077	2024 AC
157-011-078	2024 AC
157-011-079	2024 AC
157-011-080	2024 AC
157-011-081	2024 AC
157-011-082	2024 AC
157-011-083	2024 AC
157-011-084	2024 AC
157-011-085	2024 AC
157-011-086	2024 AC
157-011-087	2024 AC
157-011-088	2024 AC
157-011-089	2024 AC
157-011-090	2024 AC
157-011-091	2024 AC
157-011-092	2024 AC
157-011-093	2024 AC
157-011-094	2024 AC
157-011-095	2024 AC
157-011-096	2024 AC
157-011-097	2024 AC
157-011-098	2024 AC
157-011-099	2024 AC
157-011-100	2024 AC
157-011-101	2024 AC
157-011-102	2024 AC
157-011-103	2024 AC
157-011-104	2024 AC
157-011-105	2024 AC
157-011-106	2024 AC
157-011-107	2024 AC
157-011-108	2024 AC
157-011-109	2024 AC
157-011-110	2024 AC
157-011-111	2024 AC
157-011-112	2024 AC
157-011-113	2024 AC
157-011-114	2024 AC
157-011-115	2024 AC
157-011-116	2024 AC
157-011-117	2024 AC
157-011-118	2024 AC
157-011-119	2024 AC
157-011-120	2024 AC
157-011-121	2024 AC
157-011-122	2024 AC
157-011-123	2024 AC
157-011-124	2024 AC
157-011-125	2024 AC
157-011-126	2024 AC
157-011-127	2024 AC
157-011-128	2024 AC
157-011-129	2024 AC
157-011-130	2024 AC
157-011-131	2024 AC
157-011-132	2024 AC
157-011-133	2024 AC
157-011-134	2024 AC
157-011-135	2024 AC
157-011-136	2024 AC
157-011-137	2024 AC
157-011-138	2024 AC
157-011-139	2024 AC
157-011-140	2024 AC
157-011-141	2024 AC
157-011-142	2024 AC
157-011-143	2024 AC
157-011-144	2024 AC
157-011-145	2024 AC
157-011-146	2024 AC
157-011-147	2024 AC
157-011-148	2024 AC
157-011-149	2024 AC
157-011-150	2024 AC
157-011-151	2024 AC
157-011-152	2024 AC
157-011-153	2024 AC
157-011-154	2024 AC
157-011-155	2024 AC
157-011-156	2024 AC
157-011-157	2024 AC
157-011-158	2024 AC
157-011-159	2024 AC
157-011-160	2024 AC
157-011-161	2024 AC
157-011-162	2024 AC
157-011-163	2024 AC
157-011-164	2024 AC
157-011-165	2024 AC
157-011-166	2024 AC
157-011-167	2024 AC
157-011-168	2024 AC
157-011-169	2024 AC
157-011-170	2024 AC
157-011-171	2024 AC
157-011-172	2024 AC
157-011-173	2024 AC
157-011-174	2024 AC
157-011-175	2024 AC
157-011-176	2024 AC
157-011-177	2024 AC
157-011-178	2024 AC
157-011-179	2024 AC
157-011-180	2024 AC
157-011-181	2024 AC
157-011-182	2024 AC
157-011-183	2024 AC
157-011-184	2024 AC
157-011-185	2024 AC
157-011-186	2024 AC
157-011-187	2024 AC
157-011-188	2024 AC
157-011-189	2024 AC
157-011-190	2024 AC
157-011-191	2024 AC
157-011-192	2024 AC
157-011-193	2024 AC
157-011-194	2024 AC
157-011-195	2024 AC
157-011-196	2024 AC
157-011-197	2024 AC
157-011-198	2024 AC
157-011-199	2024 AC
157-011-200	2024 AC