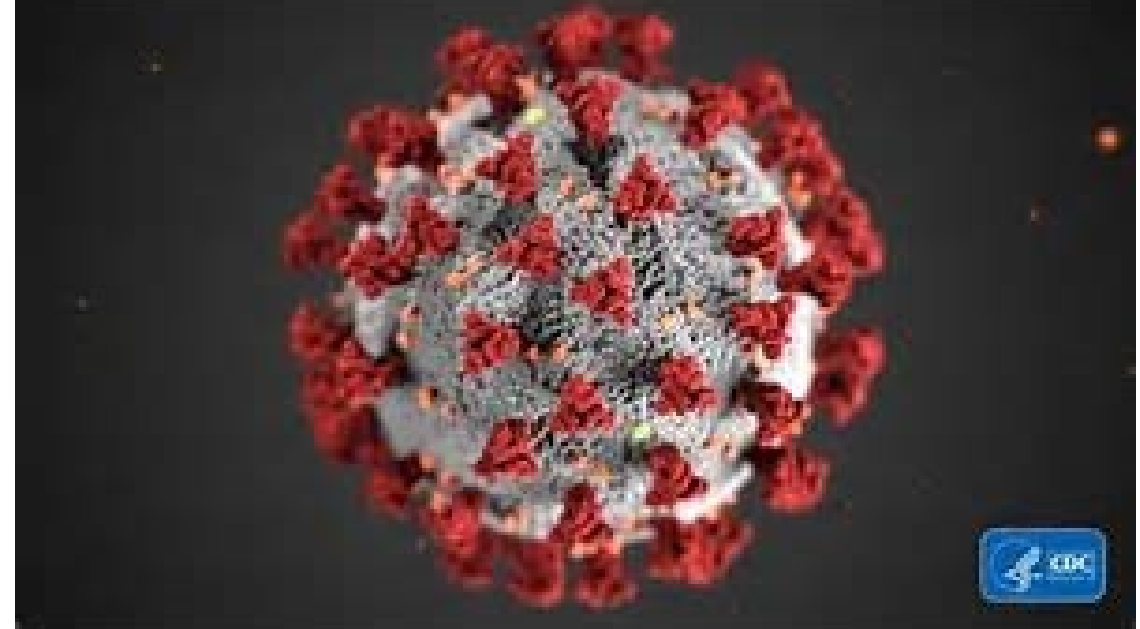


# COVID-19 Update



---

Monterey County Health Department, Public Health Bureau  
Edward Moreno, MD, MPH, Health Officer & Director of Public Health  
February 23, 2021



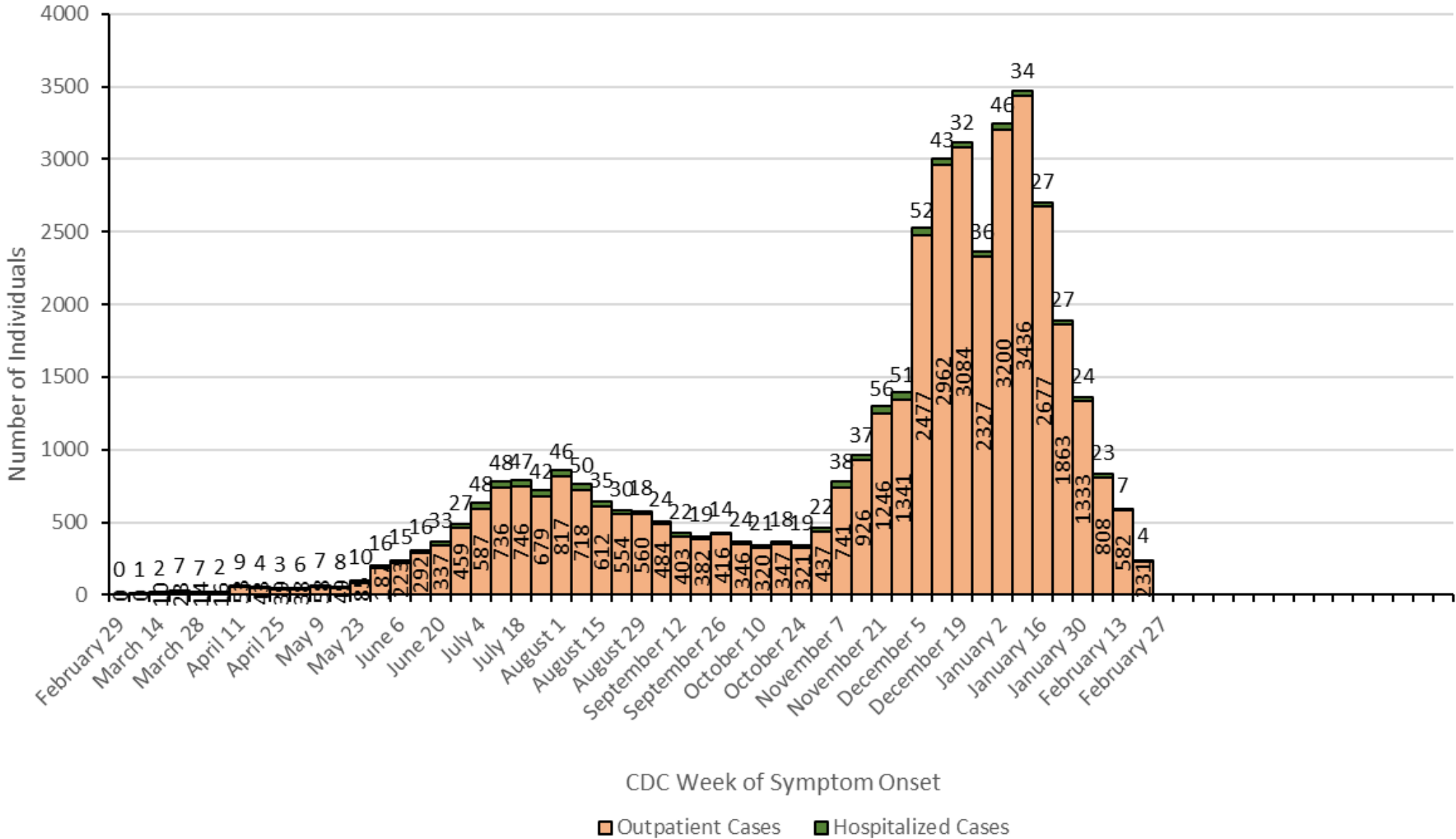
# COVID-19 Data and Metrics

---

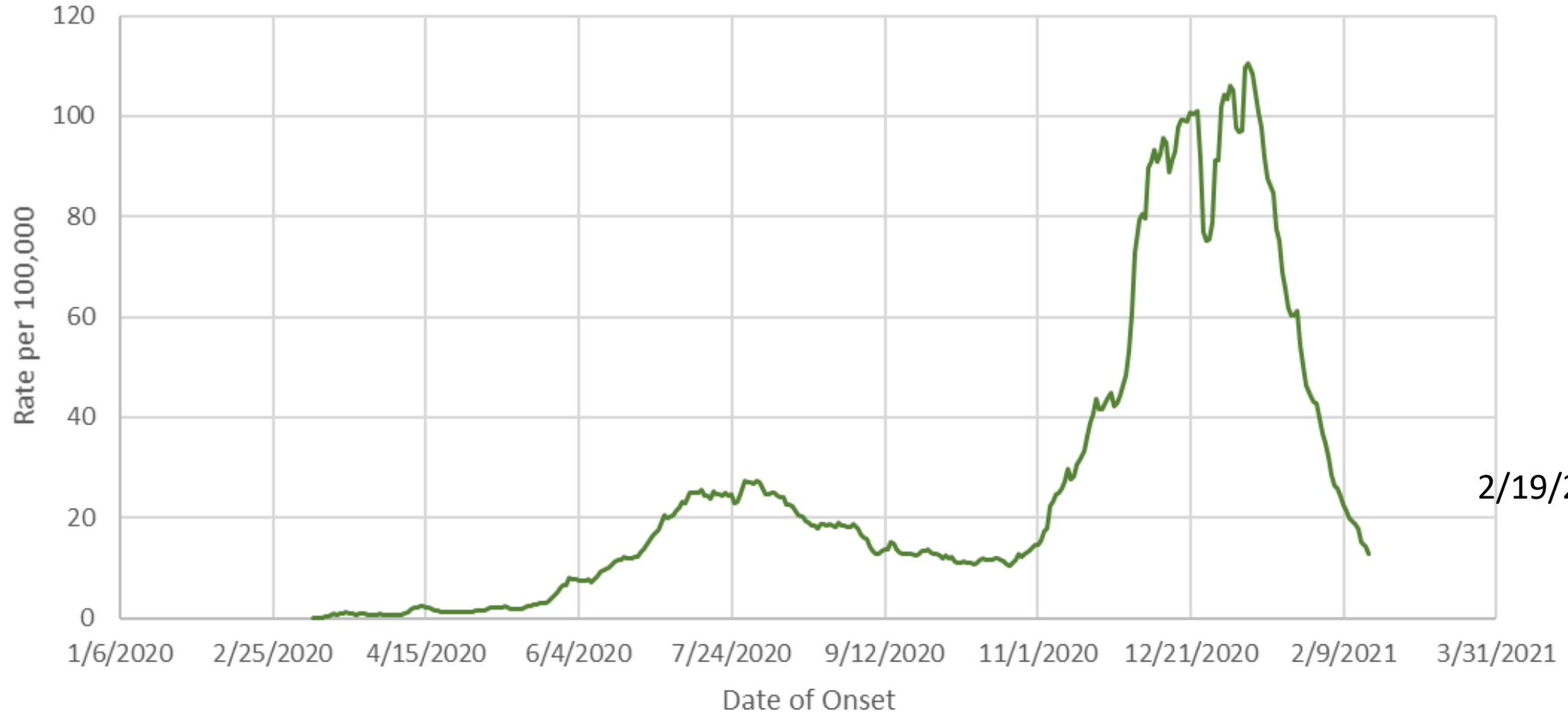


# COVID-19 Among Monterey County Residents

as of February 19, 2021



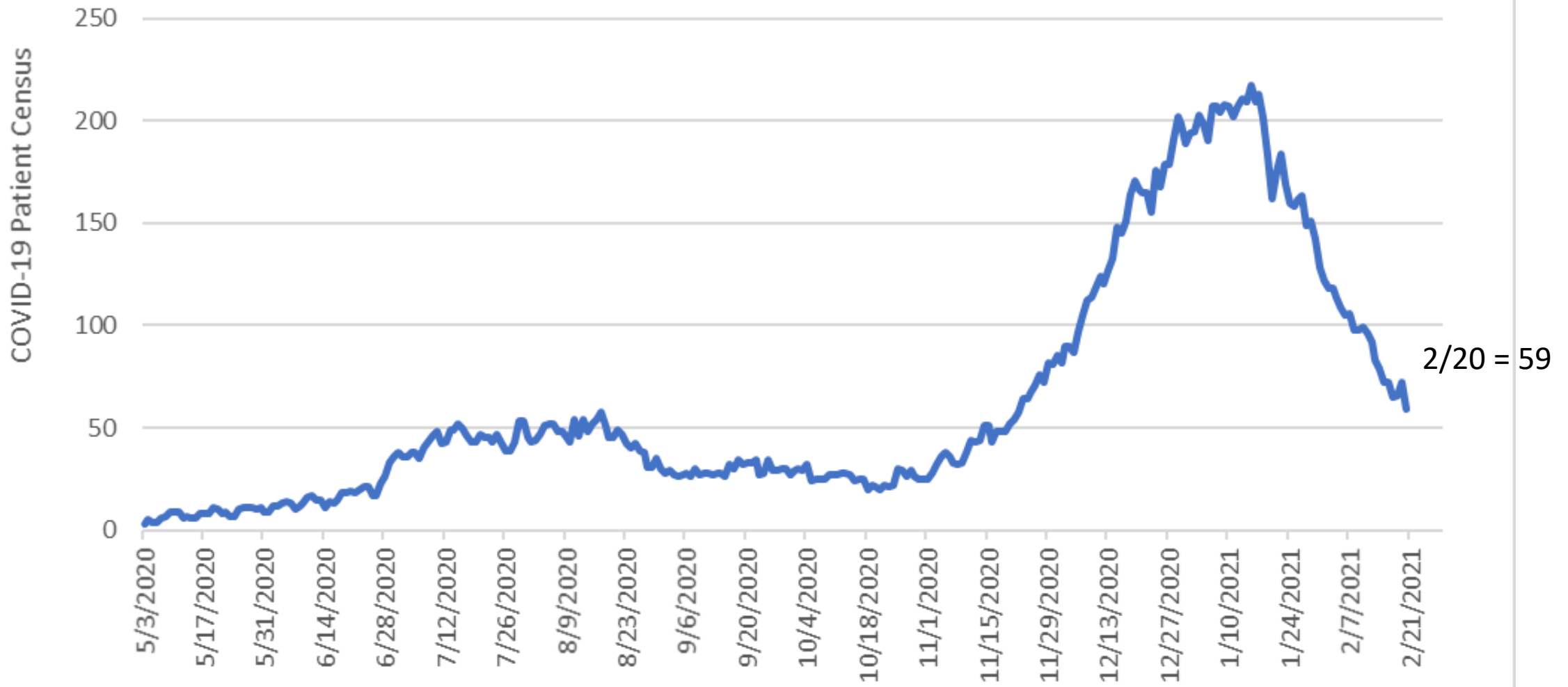
# Monterey County Rolling 7-Day Daily COVID-19 Case Rate per 100,000 Residents as of February 19, 2021



— Rolling 7-Day Daily Rate per 100,000



# Monterey County Hospitalization Census: Confirmed COVID-19 Patients as of February 20, 2021



# Blueprint Metric Tier Thresholds

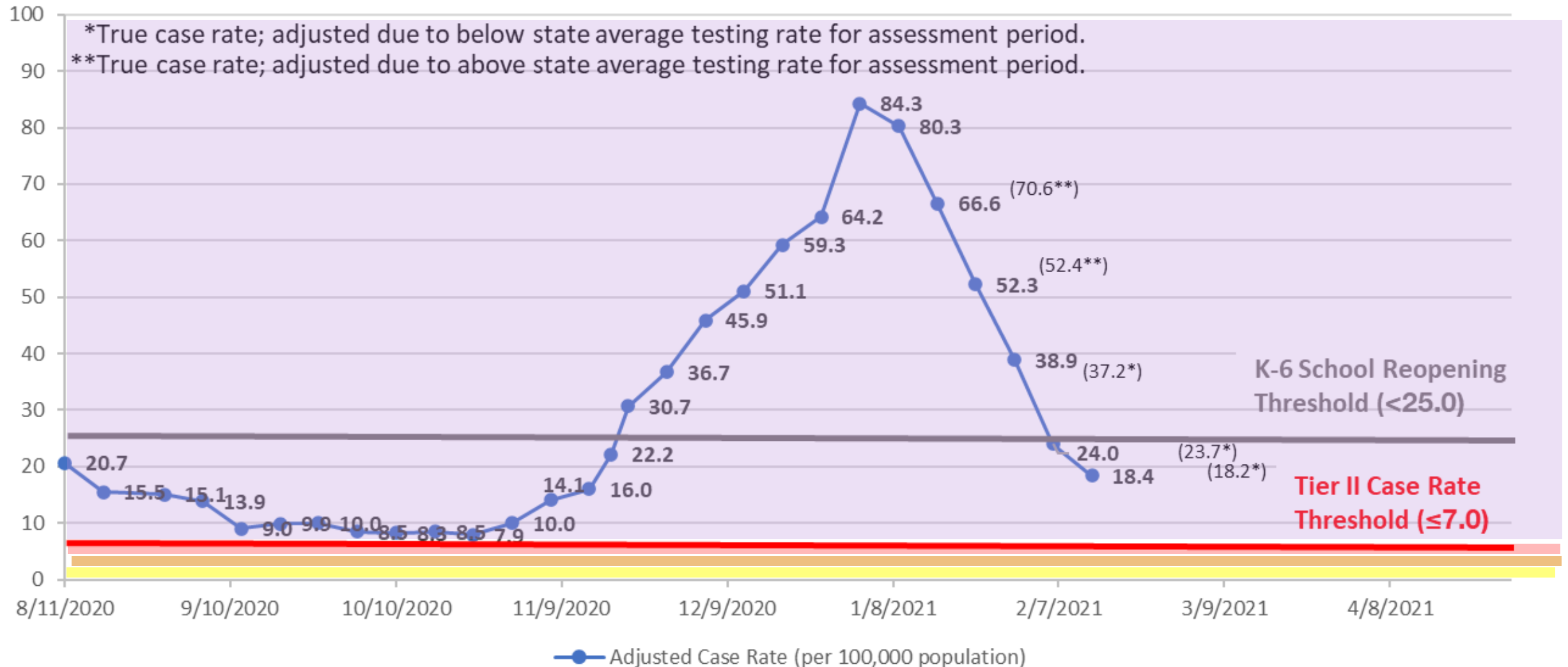
Monterey County Blueprint Metrics as of February 13 assessment period	Tier 1 (Widespread)	Tier 2 (Substantial)	Tier 3 (Moderate)	Tier 4 (Minimal)
Adjusted Case Rate: <b>18.4</b>	>7	4 to 7	1 to 3.9	<1
Test Positivity Rate: <b>6.6%</b>	>8%	5% to 8%	2% to 4.9%	<2%
HPI Lowest Quartile Test Positivity Rate: <b>12.7%</b>	>8.0%	≤8.0%	≤5.2%	≤2.1%



# CDPH Blueprint for a Safer Economy Metrics

## Monterey County Adjusted Case Rate

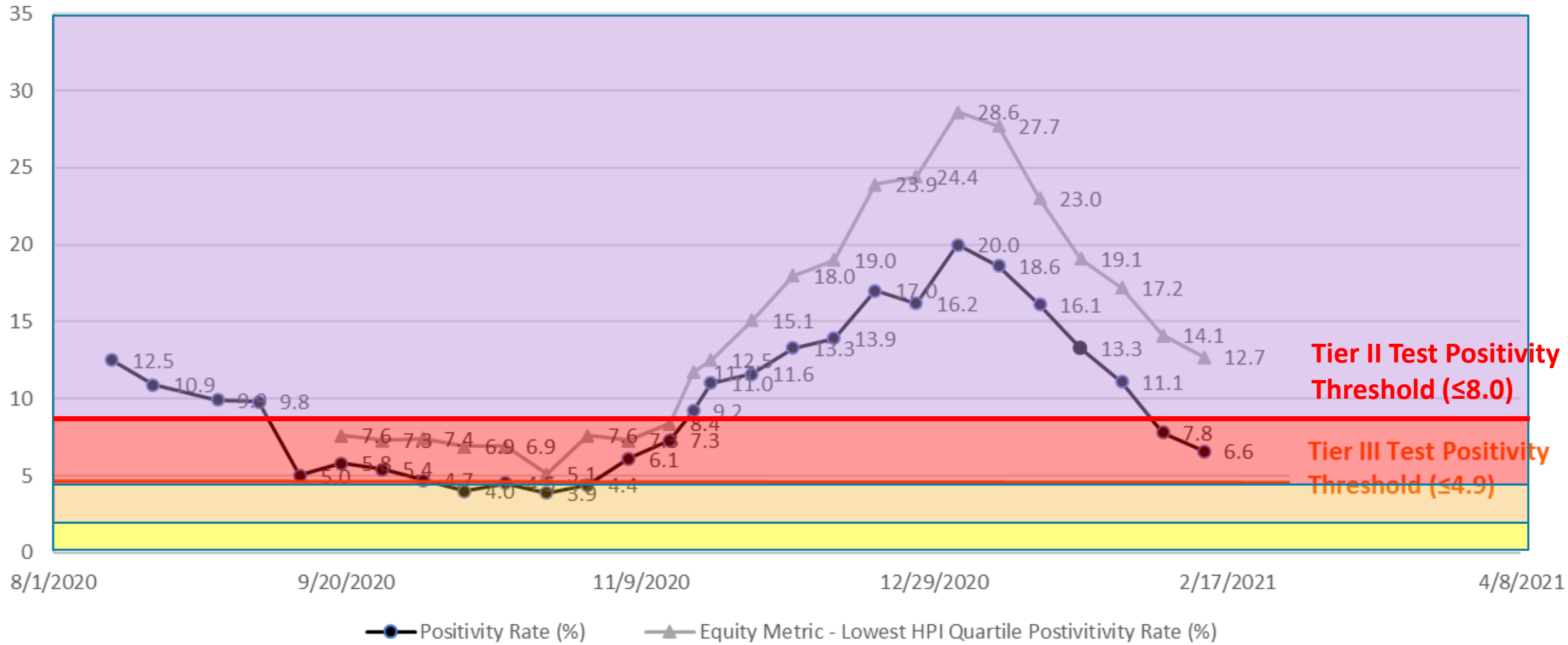
as of Assessment Period ending February 13, 2021



# CDPH Blueprint for a Safer Economy Metrics

## Monterey County Test Positivity Rate and Equity Measure

as of Assessment Period ending February 13, 2021





# Schools

---



# State of California Safe Schools for All

---

Schools that are already open in Purple Tier may remain open

Open schools must complete and post their COVID-19 Safety Plan on the school website, which includes

- School Guidance Checklist
- COVID-19 Prevention Plan
- Examples of both documents can be found at <https://schools.covid19.ca.gov/>

Closed schools must complete and post their COVID-19 Safety Plan and must submit to the state and LHJ

- LHJ or State may provide input to the applicant, which must be addressed prior to reopening.
- If LHJ and State do not provide input or objection, within 7 days, then the schools may reopen



# Testing

---



# Optum Site Utilization

Week Ending	Salinas (825/wk)	Seaside (825/wk)	Castroville (825/wk)	Soledad (1,650/wk)
January 16	777	814	834	1,065
January 23	739	819	808	834
January 30	711	700	471	420
February 6	656	637	285	348
February 13	563	601	240	251
February 20	461	460	119	206

Walk-up maximum weekly capacity at 165/day.  
 Drive-up maximum weekly capacity at 330/day.

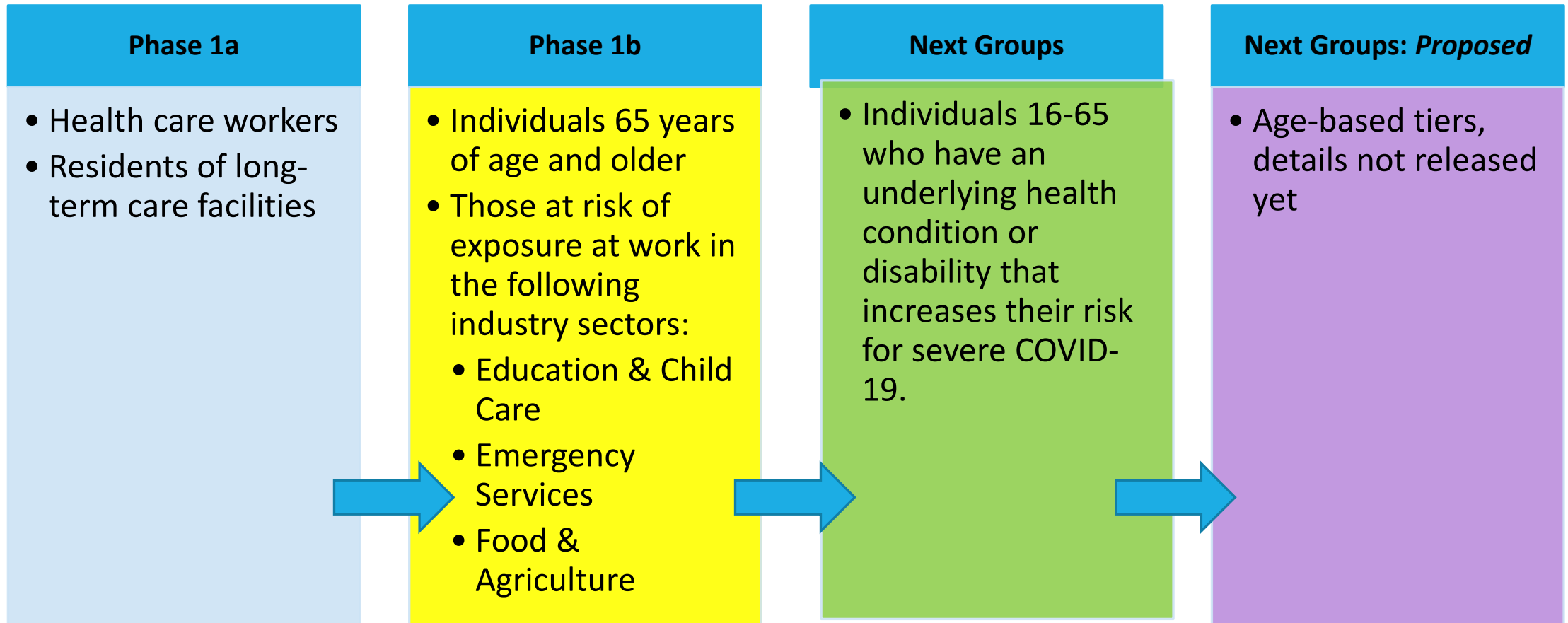


# California COVID-19 Vaccine Plan

---



# California's Revised COVID-19 Vaccine Plan; Balancing Risk of Severe Illness and Protecting Essential Workforce



# Monterey County COVID-19 Vaccinations: Phase 1a and Phase 1b

Health Care Workers, Long-Term Care Residents, and Emergency Medical Personnel

Open

Individuals 75 Years of Age and Older

Open

Individuals 65 to 74 Years Old Who Are at Risk of Exposure While Working in Food, Agriculture, Childcare, Education, and Emergency Services

Open

Individuals 65 to 74 Years Old Who Live in ZIP Codes Corresponding to the Healthy Places Index Lowest Quartile Census Tracts

February 17

Individuals 65 to 74 Years Old Not Already Vaccinated

Open  
March 3

Individuals Who Are at Risk of Exposure While Working in Food, Agriculture, Childcare, Education and Emergency Services Not Already Vaccinated

Individuals 16 to 64 Years of Age with a Medical Condition or Disability that Puts Them at High Risk for Morbidity and Mortality as Defined by the California Department of Public Health\*

Open  
March 17

Other individuals not included above should continue to practice COVID-19 preventive measures until the California Department of Public Health announces the next phase of vaccination. For more information, visit [montereycountycovid19.com](https://montereycountycovid19.com).



**Vaccine supplies are extremely limited. Not everyone eligible for vaccination may be able to schedule an appointment until supplies increase.**



COUNTY OF MONTEREY  
HEALTH DEPARTMENT

# COVID-19 Vaccine Schedule

*Together we can end the pandemic.*

## PHASE 1A Vaccinating NOW

- Persons at risk of exposure to SARS-CoV-2 through their work in any role in direct health care or long-term care setting.
- Residents in long-term care settings.

## PHASE 1B Vaccinating NOW

- Persons ages 75 and older.
- Persons ages 65 - 74 who are workers in Agriculture and Food, Childcare and Education, and Emergency Services
- Persons ages 65 - 74 who live in the lowest quartile Healthy Places Index ZIP Codes:

<b>North County</b>	<b>Salinas</b>
95012	93901
95039	93905
95076	93906

<b>Peninsula &amp; Big Sur</b>	<b>South County</b>
93933	93926
93955	93927
	93930
	93960

<https://covid19.ca.gov/essential-workforce/>

[www.mtyhd.org/covid19](http://www.mtyhd.org/covid19)  
831-769-8700

2/17/2021



CONDADO DE MONTEREY  
DEPARTAMENTO DE SALUD

# Programación de la Vacuna COVID-19

*Juntos podemos poner fin a la pandemia.*

## FASE 1A Vaccinating AHORA

- Personas en riesgo de exposición al SARS-CoV-2 a través de su trabajo en cualquier función en entornos de atención médica directa o atención a largo plazo.
- Residentes en entornos de cuidado a largo plazo

## FASE 1B Vacunando AHORA

- Personas de 75 años o más.
- Personas entre las edades de 65 - 74 años quienes trabajan en sectores de Agricultura y Comida, Cuidado de niños y Educación, y Servicios de Emergencia.
- Personas entre las edades de 65 - 74 años quienes viven en áreas que se encuentran en el cuartil más bajo del Índice de Lugares Saludables por Código Postal:

<b>Norte del Condado</b>	<b>Salinas</b>
95012	93901
95039	93905
95076	93906

<b>Peninsula &amp; Big Sur</b>	<b>Sur del Condado</b>
93933	93926
93955	93927
	93930
	93960

<https://covid19.ca.gov/essential-workforce/>

[www.mtyhd.org/covid19](http://www.mtyhd.org/covid19)  
831-769-8700

2/17/2021

[www.mtyhd.org/covidvaccine](http://www.mtyhd.org/covidvaccine)





# Local and State Vaccination Planning and Implementation

---



# Primary Care Provider PODs and Appointments

---

## Appointments for patients

- Salinas Valley Memorial Healthcare System
- Montage Medical Group
- County Clinic Services
- **Clinica de Salud de Valle Salinas**
- **Pebble Beach Health and Wellness**
- Soledad Medical Clinic
- **United Ag Health and Wellness, Salinas**



# Federally Qualified Health Centers Program

---

New program is part of Biden Administration's goal of 10% doses directed for equity

## Selection criteria for FQHCs

- Centers that serve person experiencing homelessness, agricultural workers, residents of public housing, limited English speakers
- >2,000 patients who are 65 and older at the FQHC
- Proven S&H capacity



# Federally Qualified Health Centers Program

---

## Schedule

- Week 1 February 15.
  - 25 FQHCs in 7 states: CA CO FL MI TX NY WA
- Week 2 TBD
  - 100 FQHCs
- Week 3 TBD
  - 250+ FQHCs, with at least one in every state and territory
  - **Monterey County Clinic Services Bureau.**

## Vaccine

- 200-500 doses of Moderna per FQHC per week, to be divided amongst each FQHC's sites, 100 doses per location
- **Allocation is 4,500 to CSVS, 500 delivered to each of two sites so far.**
- From federal allocation



# Third Party Administrator

---

## Transition of counties to TPA Provider Network in waves

- Wave 1 February 21.
  - Fresno, Imperial, Kern, Kings, Madera, Merced, Riverside, San Joaquin, Stanislaus, Tulare
- Wave 2 March 7.
  - **Monterey**, San Benito, San Luis Obispo and 25 other counties.
- Wave 3 March 14.
  - Santa Cruz, Bay Area counties and remaining California counties

## TPA scheduling meetings with each county.

- Following meeting, CDPH and TPA will issue implementation plan
- CDPH will determine LHJ resource needs to transition to TPA
- **February 19 meeting with Blue Shield**



# Third Party Administrator

---

## State

- Responsible for establishing the vaccine allocation criteria and approving allocations to counties

## Blue Shield

- Provide strategic reports to State to guide allocations
- Responsible for managing the network of vaccine providers
- Create and manage incentive payment methodologies including
  - Volume based payments
  - Equity payments
  - Percent of vaccine administered
- Recommend to State a Vaccine Allocation Algorithm
- Recommend an Appointment Prioritization Algorithm for Network providers



# Third Party Administrator

---

## Network Performance Criteria

### Access

- Vaccine available for 95% of people within 30 minutes in urban/60 rural
- Vaccinate homebound people

### Capacity

- By March 1, 3 million doses per week
- By April 30 4 million per week



# Third Party Administrator

---

## Network Performance Criteria

### Equity

- State will establish monthly goal for vaccinating highly impacted populations and HPI communities

### Administration Efficiency

- 95% of doses administered within one week of receipt

### Patient Experience

- 5 star rating





# Third Party Administrator

---

Network Management

Data Management

Provider Responsibilities

Blue Shield Compensation



# Vaccine Data Reporting

---



Disposition of Monterey County Public Health Vaccines	Vaccines Allocated (includes received & on order)	Vaccines Re-allocated	Reserved for Scheduled Clinics	Vaccine Ordered but Not Received	Recorded as Administered in State CAIR2 to Monterey County Residents*	Reported by Agency as Administered (includes non-county resident)	MCPH Vaccine Available
MCHD PH	18,095				7,542	8,256	
California Forensic MG (reallocated)		200					
CHOMP/Montage (reallocated)		1,965					
Clinica de Salud (reallocated)		673					
Mee Memorial (reallocated)		420					
Monterey Fire (reallocated)		649					
Monterey Peninsula Ped (reallocated)		372					
Natividad (reallocated)		1,400					
Soledad Medical Clinic (reallocated)		100					
US Renal (reallocated)		30					
<b>Total</b>	<b>18,095</b>	<b>-5,809</b>	<b>-3,000</b>	<b>-1,170</b>		<b>-8,256</b>	<b>-140 (0%)</b>

Entities Within Monterey County Receiving Vaccination Distributions and Redistributions	Vaccines Allocated (includes received and on order)	Recorded as Administered in CAIR2 to Monterey County Residents *	Reported as Administered by Entity (includes non-county residents)	Estimated as Administered *
Big Sur Health Center	400	230	230	230
California Forensic MG	400 (+200)	0		0
Clinica de Salud	2,400 (+673)	762	1,182	1,182
CHOMP	15,995 (+1,965)	11,726		
Montage Medical Group		71	13,655	13,890
Montage Health Marina Wellness		2,093		
Doctors on Duty/Salinas Urgent Care	1,200	540	890	890
Elite Corporate Medical Services	500	0	-	0
Mee Memorial	4,300 (+420)	2,687	1,429	2,687
Monterey County Clinic Services	2,100	885	930	930
Monterey County Public Health	18,095 (-5,809)	7,542	8,256	8,256
Monterey Peninsula Pediatric	0 (+372)	296	-	296
Monterey Fire Department	0 (+649)	814	-	814
Natividad	12,645 (+1,400)	8,221	7,675	8,221



Entities Within Monterey County Receiving Vaccination Distributions and Redistributions	Vaccines Allocated (includes received and on order)	Recorded as Administered in CAIR2 to Monterey County Residents*	Reported as Administered by Entity (includes non-county residents)	Estimated as Administered*
Pebble Beach Health & Wellness	200	0	-	0
Safeway	800	320	243	320
Salinas Valley Memorial	14,095	1,053	7,950	7,950
Prime Care Medical Group		3,162		
Salinas Valley Medical Center		58		
Taylor Farms Health & Wellness		230		
Soledad Medical Clinic	1,000 (+100)	324	176	324
Visiting Nurses Association	2,100	740		740
Unknown		3,249	-	3,249
<b>Total of Ordered</b>	<b>76,230</b>	<b>45,003</b>		<b>49,979 (83%, 49,979/59,960)</b>
<b>Total Received</b>	<b>59,960</b>			
Providers Outside Monterey County		<b>13,115</b>		
Pharmacies (Lucky, RiteAid, Walgreens)		8,389		



# Doses Administered by Racial and Ethnic Group

Racial and Ethnic Group	Total Doses Administered	Monterey County Population*
American Indian or Alaska Native, Not Hispanic or Latino	279 (<1%)	<1%
Asian, Not Hispanic or Latino	4,978 (10%)	6%
Black or African American, Not Hispanic or Latino	1,040 (2%)	3%
Hispanic or Latino, Any Race	15,608 (31%)	56%
Native Hawaiian or Pacific Islander, Not Hispanic or Latino	594 (1%)	<1%
Other Race, Not Hispanic or Latino	3,924 (8%)	2%
White, Not Hispanic or Latino	24,577 (48%)	32%
Unknown (7.8%)	5,601	-
<b>Total</b>	<b>56,601 Doses</b>	<b>100% of 334,074</b>

\*Population eligible for vaccination



Racial and Ethnic Group	Health Care Worker Doses (<65 Years) Administered	Monterey County <65 Years Population *	65-74 Years Doses Administered	Monterey County 65-74 Population	75+ Years Doses Administered	Monterey County 75+ Population
American Indian or Alaska Native, Not Hispanic or Latino	159 (1%)	<1%	56 (<1%)	<1%	64 (<1%)	1%
Asian, Not Hispanic or Latino	2,915 (11%)	5%	811 (9%)	8%	1,252 (9%)	10%
Black or African American, Not Hispanic or Latino	672 (3%)	3%	165 (2%)	2%	203 (1%)	3%
Hispanic or Latino, Any Race	10,690 (40%)	63%	2,143 (23%)	30%	2,773 (19%)	24%
Native Hawaiian or Pacific Islander, Not Hispanic or Latino	474 (2%)	<1%	60 (<1%)	<1%	60 (<1%)	1%
Other Race, Not Hispanic or Latino	2,433 (9%)	2%	496 (5%)	2%	995 (7%)	2%
White, Not Hispanic or Latino	9,500 (35%)	26%	5,672 (60%)	57%	9,405 (64%)	61%
Unknown	2,657	-	1,119	-	1,825	-
<b>Total</b>	<b>29,500 Doses</b>	<b>100% of 270,732</b>	<b>10,522 Doses</b>	<b>100% of 37,594</b>	<b>16,577 Doses</b>	<b>100% of 25,748</b>

\*Population eligible for vaccination



# Doses Administered by Region of Residence

Region of Residence	Total Doses Administered	Monterey County Population
North County	4,945 (9%)	12%
Peninsula & Big Sur	25,819 (46%)	31%
Salinas	19,787 (35%)	38%
South County	5,991 (11%)	18%
Unknown Address	59	-
<b>Total</b>	<b>56,601 Doses</b>	<b>100%</b>





# Changes to Vaccine Allocations

---

Allocation will now be based on estimated populations in the following groups:

- Age 65 and older
- Food and Ag, Education and Childcare, Emergency Services
- Estimated population of Phase 1a no longer used in allocation determination

Allocation will now be determined for the entire county, then the allocation will be divided among LHJ and MCE.

- Kaiser's distribution will increase, decreasing distributions to LHJ and other MCE
- This is in response to requests for greater transparency



# Changes to Vaccine Allocations

---

Allocation will now be based on estimated populations in the following groups:

- **Age 65 and older (70% of allocation)**
- **Food and Ag, Education and Childcare, Emergency Services (30% of allocation)**
- **Governor recommendation to use 10% of entire allocation for teachers**
- Estimated population of Phase 1a no longer used in allocation determination

Allocation will now be determined for the entire county, then the allocation will be divided among LHJ and MCE.

- Kaiser's distribution will increase, decreasing distributions to LHJ and other MCE
- This is in response to requests for greater transparency



# Questions

---

