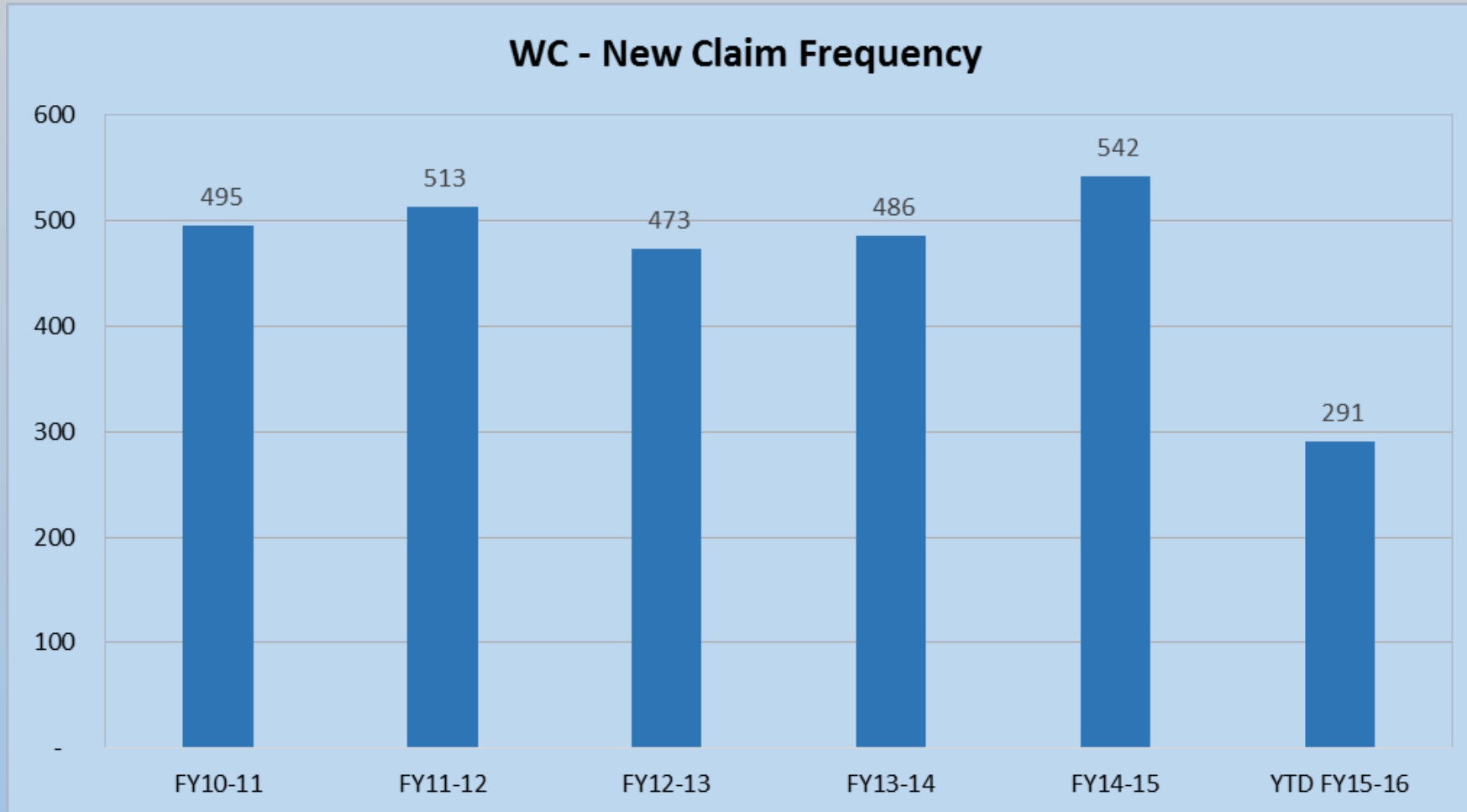


Countywide Workers' Compensation

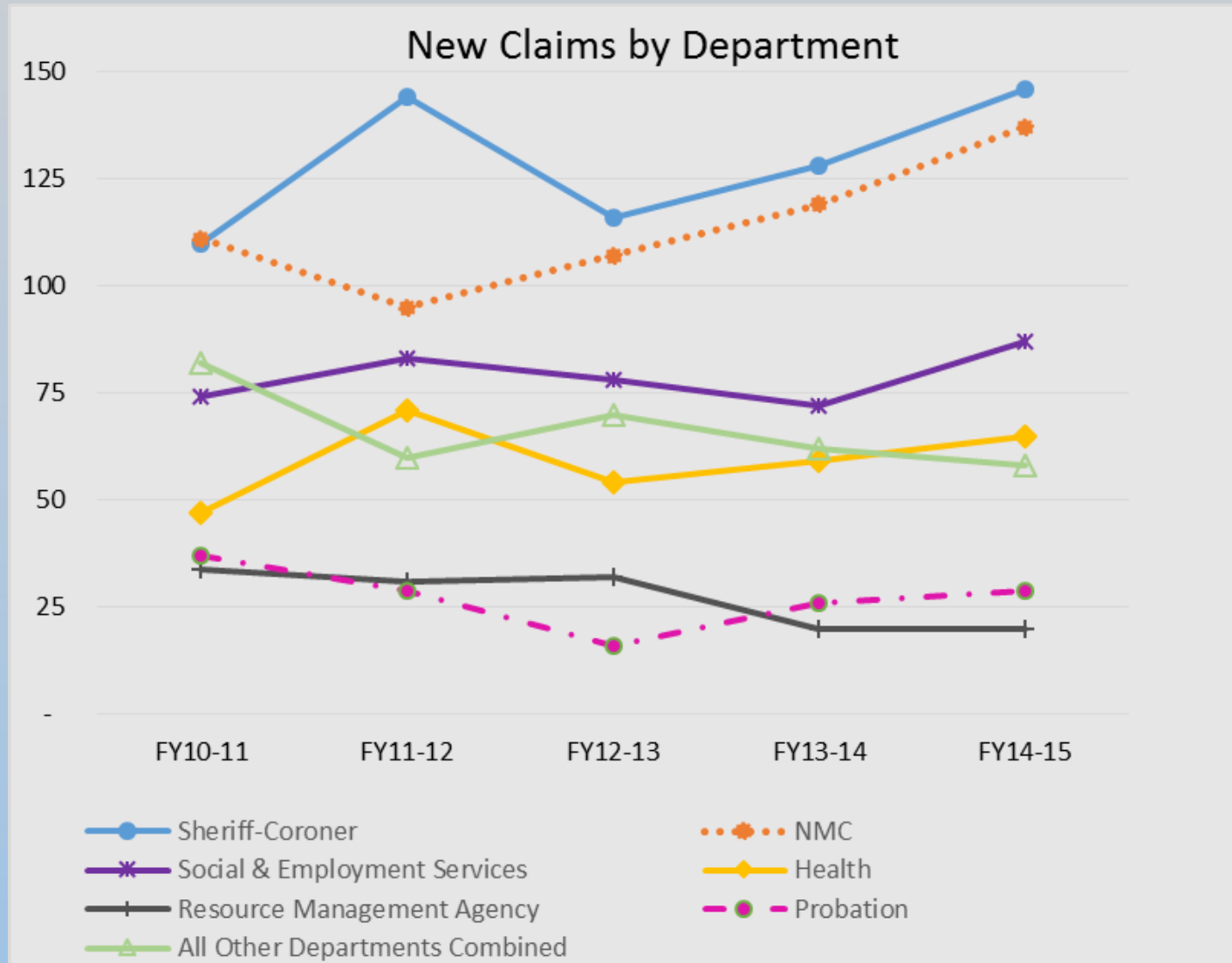


Countywide Workers' Compensation

New Claims by Department

	FY10-11	FY11-12	FY12-13	FY13-14	FY14-15	FY15-16 YTD
Sheriff-Coroner	110	144	116	128	146	89
NMC	111	95	107	119	137	72
Social & Employment Services	74	83	78	72	87	45
Health	47	71	54	59	65	35
Resource Management Agency	34	31	32	20	20	7
Probation	37	29	16	26	29	12
Top 6	413	453	403	424	484	260
Agriculture Commissioner	7	4	2	2	4	1
Assessor/Clerk/ Recorder	4	2	2	5	3	2
Auditor Controller	1		1	1	1	1
Board of Supervisors					-	-
Child Support Services	5	5	1	5	-	3
Clerk of the Board	1		2	1		-
Cooperative Extension Service					1	-
County Administrative Office	4	4	1	4	6	1
County Counsel	1		1	1	2	-
District Attorney	15	5	22	13	7	4
Economic Opportunity						1
Elections	3	1	2			1
Emergency Communication	2	4	3	3	2	1
Equal Opportunity Office	3				1	-
Human Resources	6		5			1
Information Technology	6	8	5	3	1	2
Library	18	4	13	2	11	1
Parks		14	3	13	8	9
Public Defender	6	4	2	5	5	3
Treasurer/Tax Collector		4	2	4	3	-
Water Resources Agency		1	3		3	-
All Other Departments Combine	82	60	70	62	58	31
Grand Total	495	513	473	486	542	291

Countywide Workers' Compensation



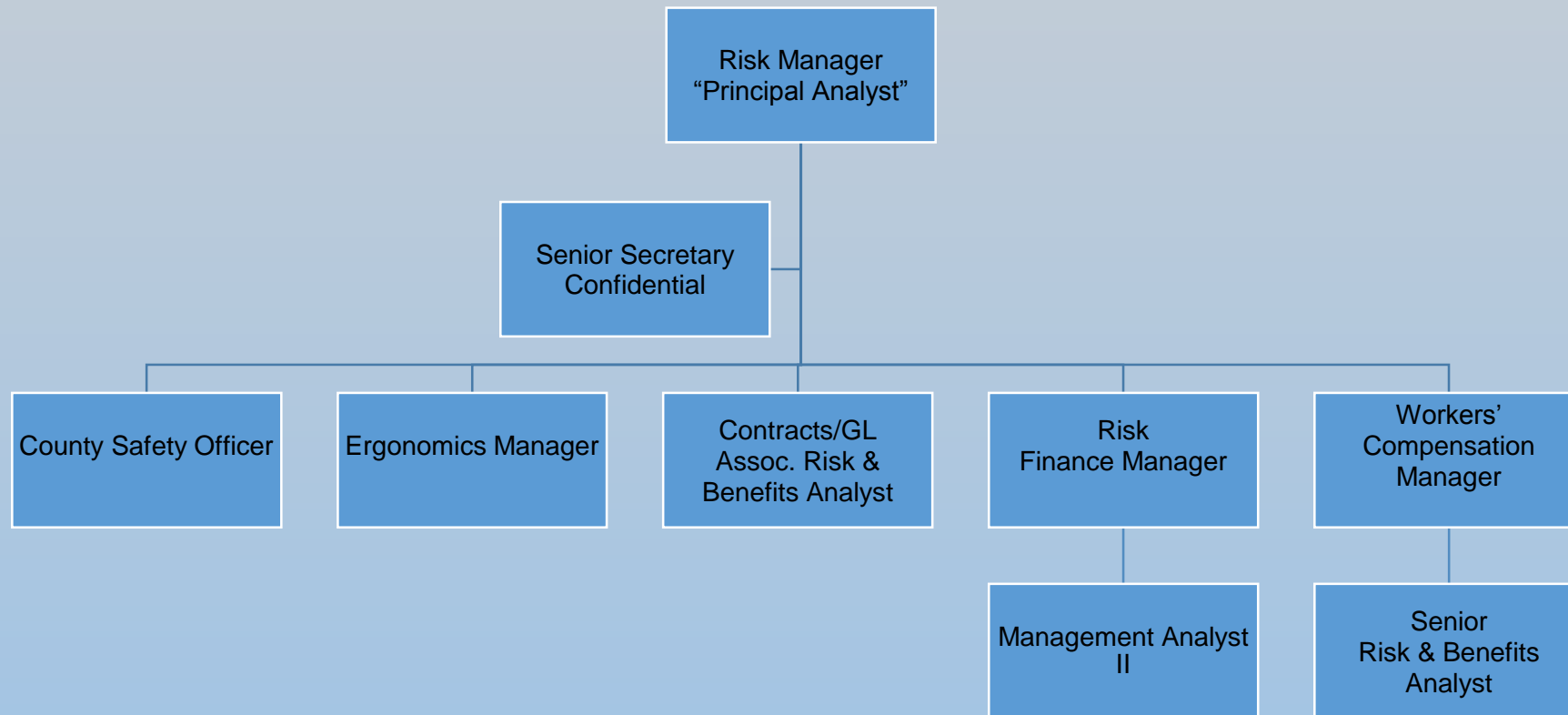
Countywide Workers' Compensation

OPEN PENDING CLAIMS as of December 31, 2015

Department	FY14/15 Actual		# of Claims		Average of # of Yrs Open	Sum of Litigated		% of Dept's Claims	Total Paid	Outstanding Reserves	Total Incurred	%	Avg Outstanding	Avg	
	#FTE	%	Claims	%		Litigated	%	Claims					Avg Paid	Reserves	Incurred
Sheriff-Coroner	431	9%	255	32%	6.0	129	37%	51%	23,352,168	15,770,229	39,122,397	38%	91,577	61,844	153,421
Social & Employment Services	762	16%	130	16%	4.6	42	12%	32%	4,669,111	6,479,823	11,148,933	11%	35,916	49,845	85,761
Natividad Medical Center	1,066	22%	121	15%	4.4	54	15%	45%	7,870,165	10,937,959	18,808,125	18%	65,043	90,396	155,439
Health	852	18%	76	10%	3.4	30	9%	39%	3,557,362	3,315,022	6,872,383	7%	46,807	43,619	90,426
Resource Management Agency	248	5%	41	5%	5.6	21	6%	51%	2,734,800	2,367,244	5,102,044	5%	66,702	57,738	124,440
Probation	289	6%	39	5%	4.3	16	5%	41%	3,293,763	3,622,009	6,915,773	7%	84,455	92,872	177,328
Top 6	3,648	77%	662	83%	5.0	292	83%	44%	45,477,369	42,492,286	87,969,655	85%	68,697	64,188	132,885
Total Other Departments	1,100	23%	134	17%	5.7	60	17%	45%	8,108,234	7,756,678	15,864,912	15%	60,509	57,886	118,395
Grand Total	4,748	100%	796	100%	5.1	352	100%	46%	53,585,603	50,248,964	103,834,567	100%	67,319	63,127	130,445

Risk Management Organization Chart

Current Positions



Risk Management Organization Chart

Requested Positions

