

Exhibit D

This page intentionally left blank.

SFL0185A

16041 CASTROVILLE BLVD/KGI

PHOTO SIMULATION – COVER STRATEGY

Photo Simulation produced November 10, 2025



SITE LOCATION



SFL0185A 16041 CASTROVILLE BLVD/KGI

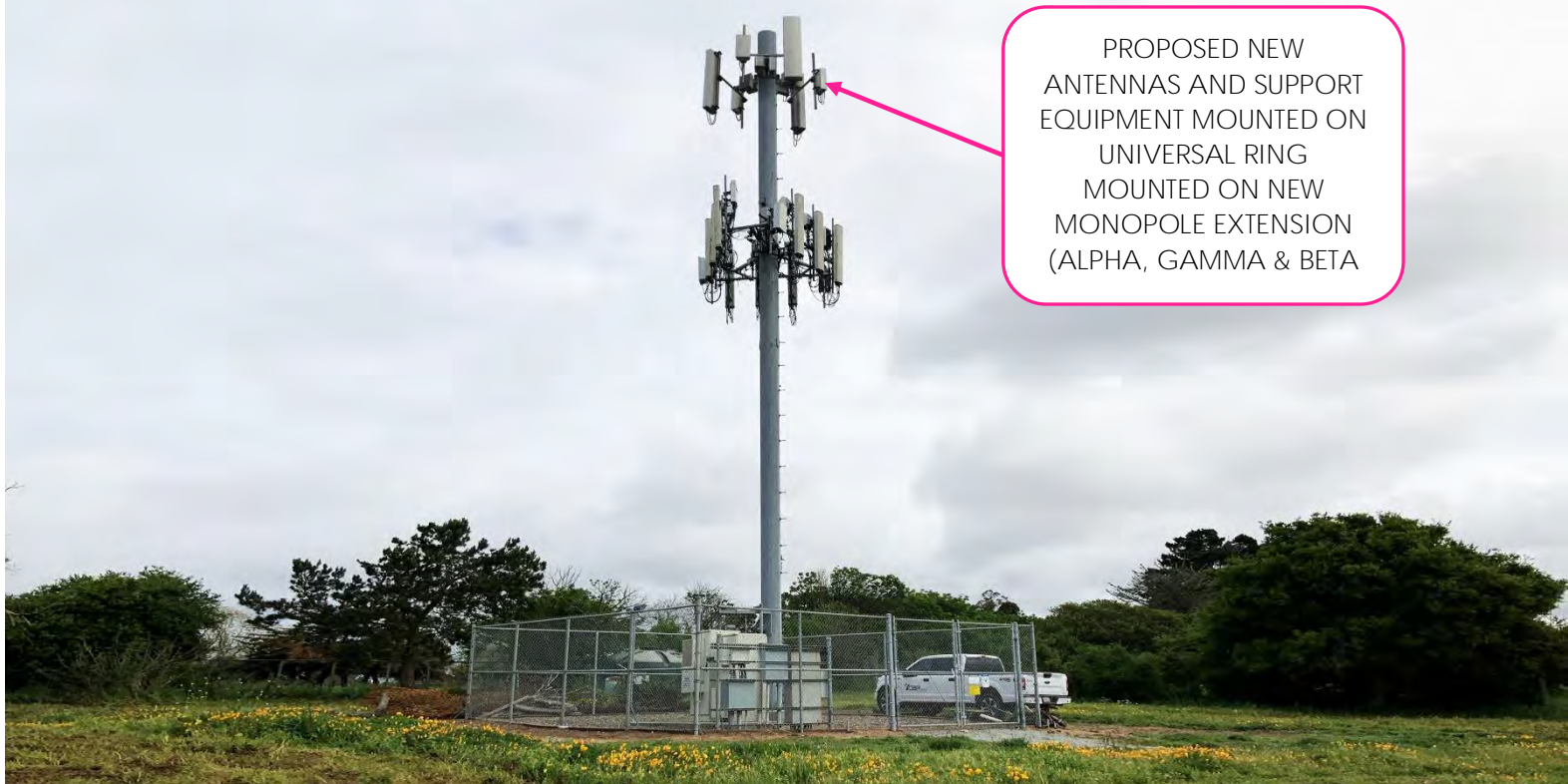
Project Type: COVERAGE STRATEGY
16041 Castroville Boulevard, Castroville, CA 95012
Site Coordinates: 36.798033, -121.707694



EXISTING



PROPOSED



VIEW 1 – LOOKING EAST ACROSS MARINER SQUARE DRIVE

SFL0185A 16041 CASTROVILLE BLVD/KGI

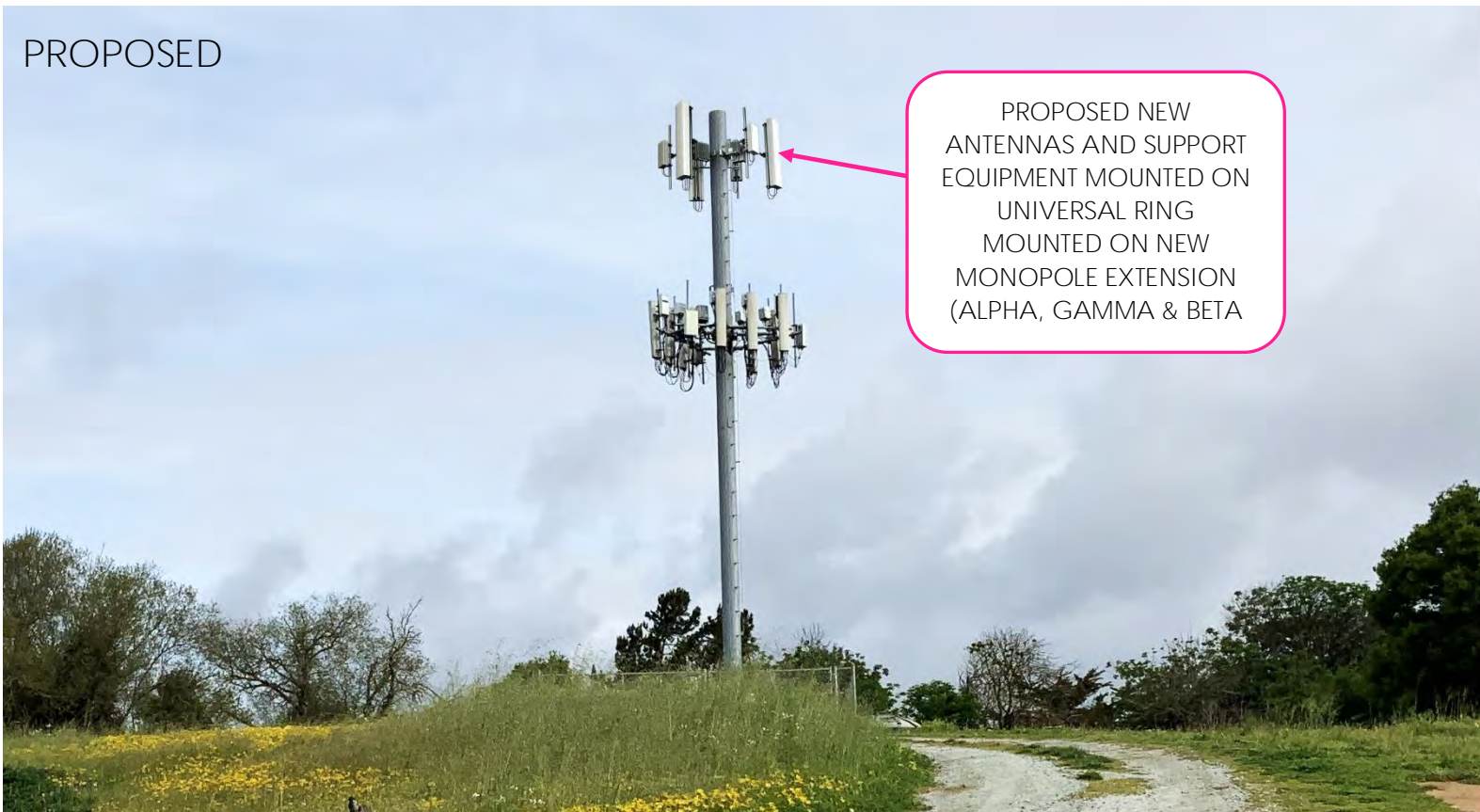
Project Type: COVERAGE STRATEGY
16041 Castroville Boulevard, Castroville, CA 95012
Site Coordinates: 36.798033, -121.707694



EXISTING



PROPOSED



VIEW 2 – LOOKING SOUTHEAST ALONG MARINER SQUARE DRIVE

SFL0185A 16041 CASTROVILLE BLVD/KGI

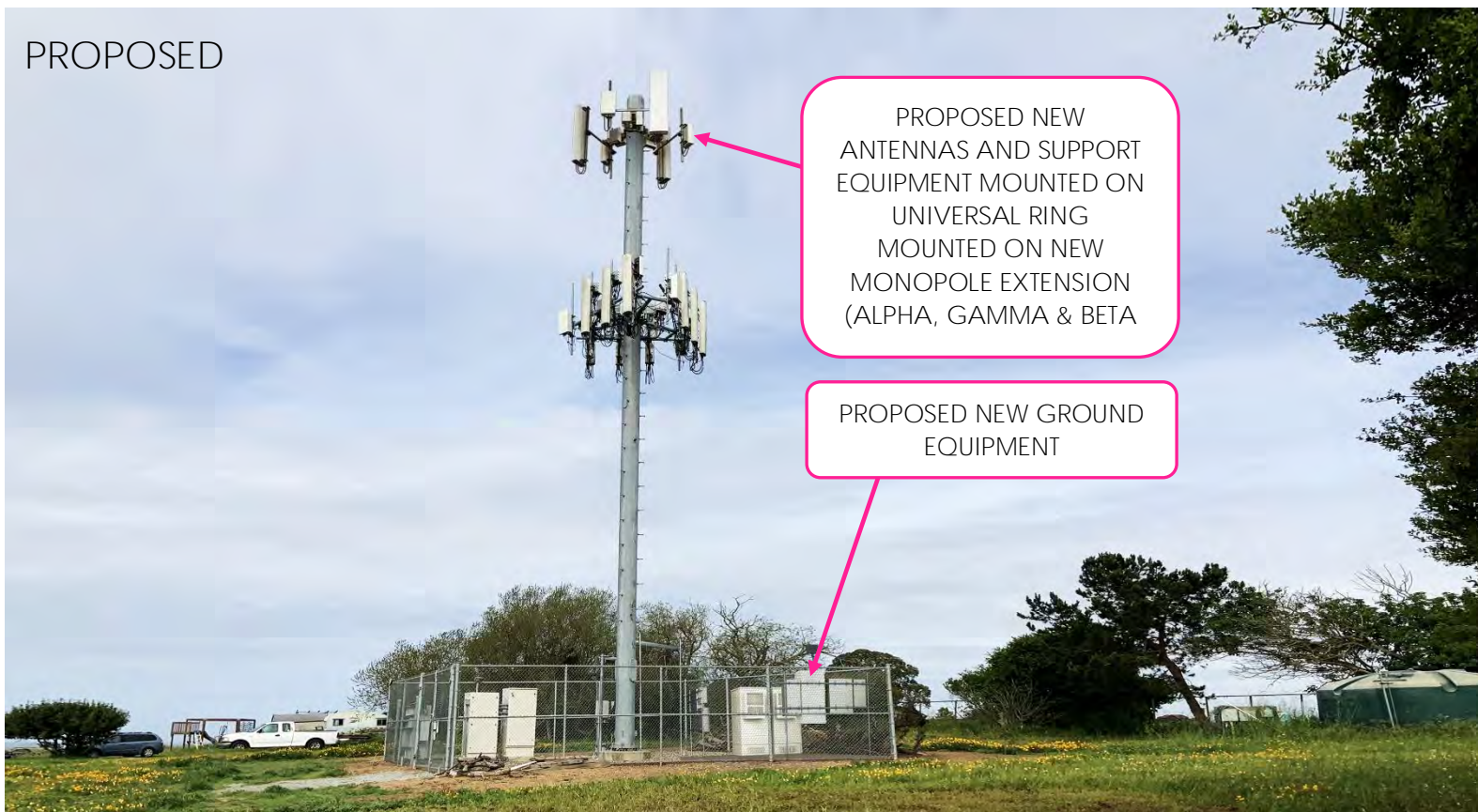
Project Type: COVERAGE STRATEGY
16041 Castroville Boulevard, Castroville, CA 95012
Site Coordinates: 36.798033, -121.707694



EXISTING



PROPOSED



PROPOSED NEW
ANTENNAS AND SUPPORT
EQUIPMENT MOUNTED ON
UNIVERSAL RING
MOUNTED ON NEW
MONOPOLE EXTENSION
(ALPHA, GAMMA & BETA

PROPOSED NEW GROUND
EQUIPMENT

VIEW 3 – LOOKING SOUTHWEST TOWARDS BUILDING

SFL0185A 16041 CASTROVILLE BLVD/KGI

Project Type: COVERAGE STRATEGY
16041 Castroville Boulevard, Castroville, CA 95012
Site Coordinates: 36.798033, -121.707694

