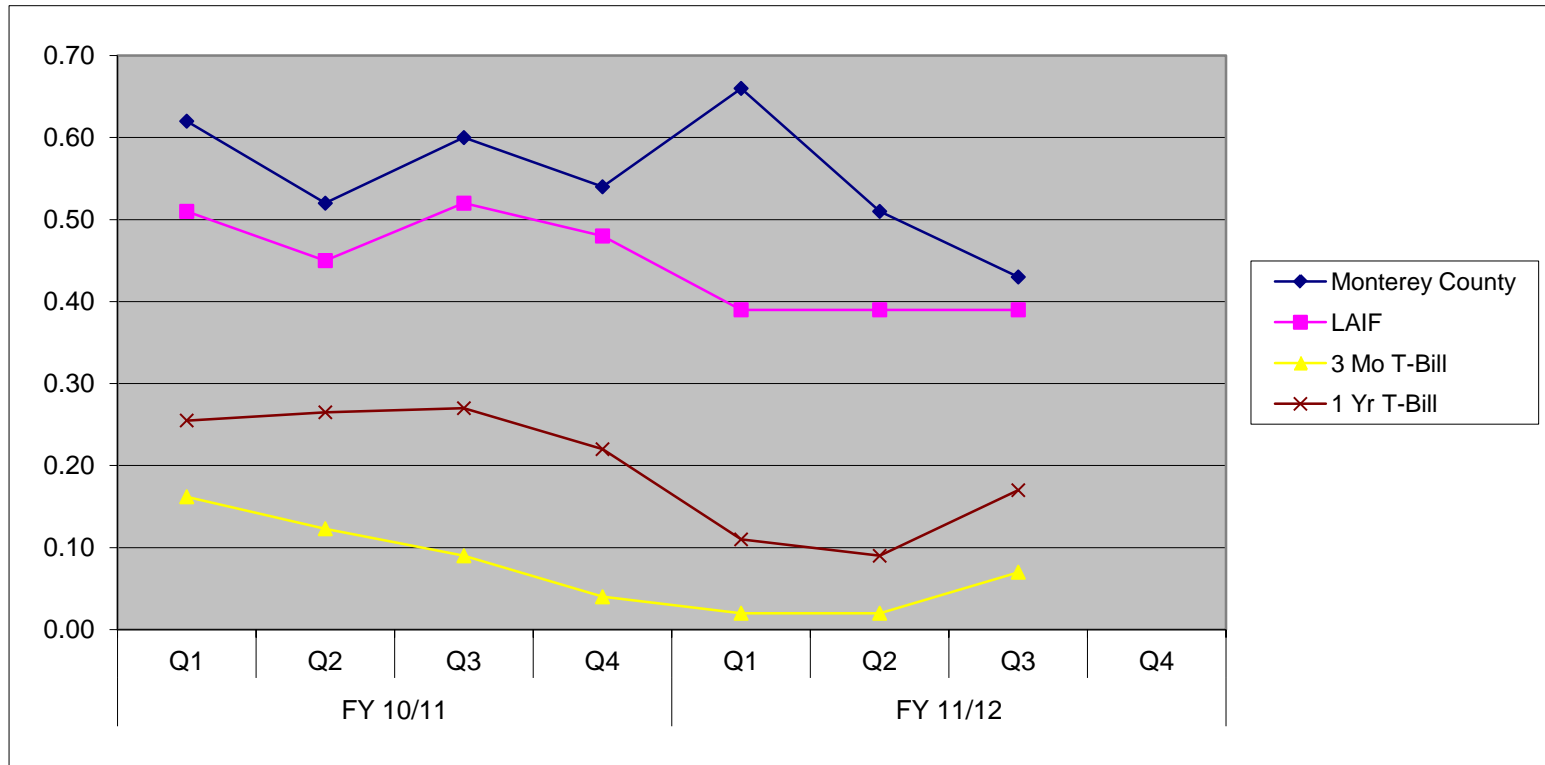


Exhibit C

Monterey County Historical Yields vs. Benchmarks



Quarterly Yield	FY 10/11				FY 11/12			
	Q1	Q2	Q3	Q4	Q1	Q2	Q3	Q4
Monterey County	0.62	0.52	0.60	0.54	0.66	0.51	0.43	
LAIF	0.51	0.45	0.52	0.48	0.39	0.39	0.39	
3 Mo T-Bill	0.16	0.12	0.09	0.04	0.02	0.02	0.07	
1 Yr T-Bill	0.26	0.27	0.27	0.22	0.11	0.09	0.17	

- The 3Mo and 1 Yr T-Bill yields are obtained from the Merrill Lynch Global Bond Indices