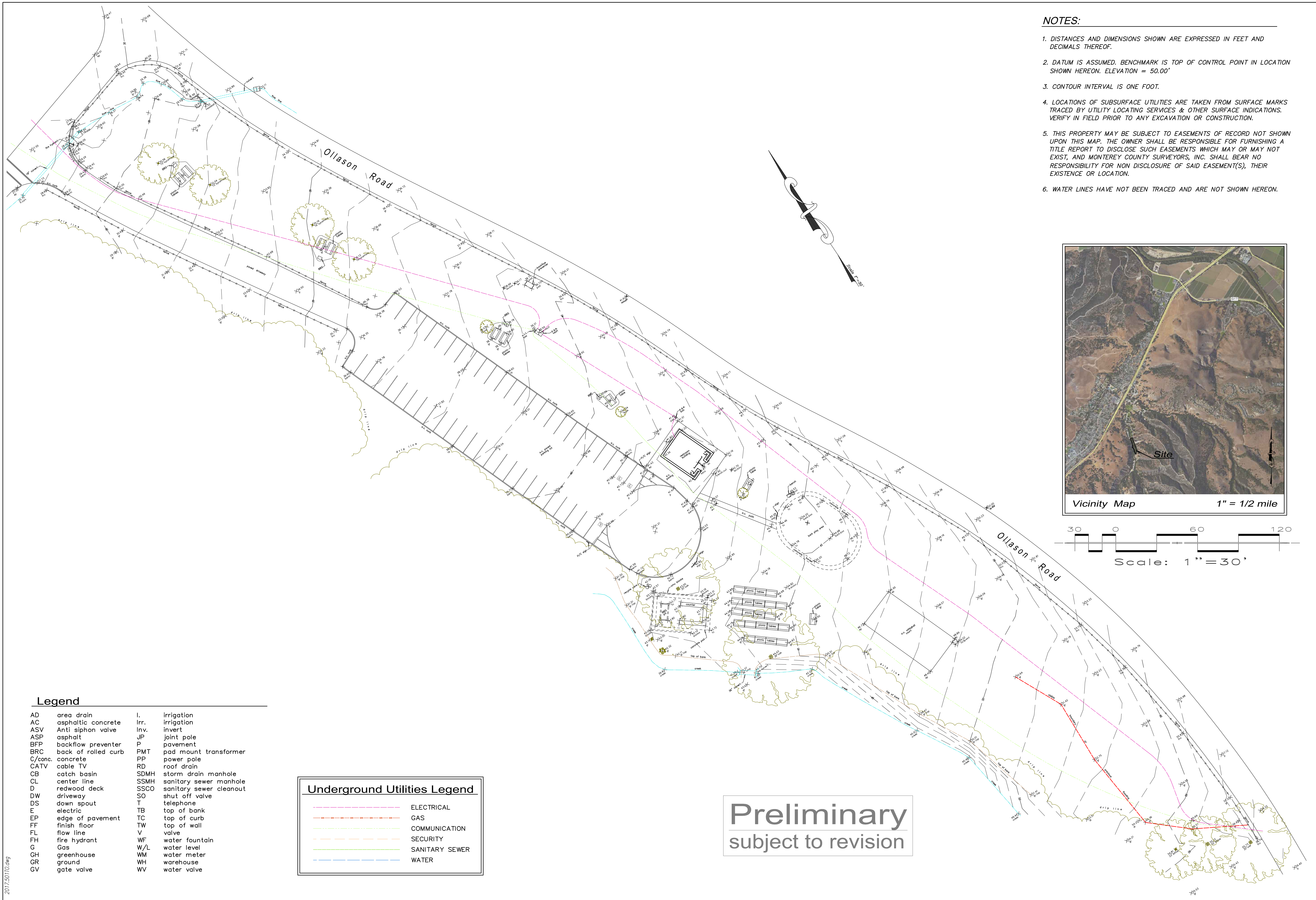


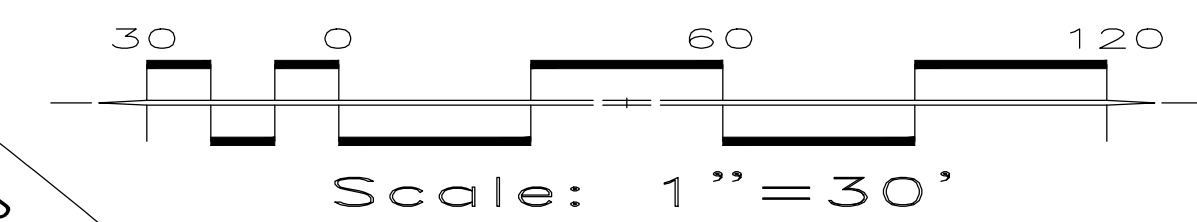
Attachment C

This page intentionally left blank.



NOTES:

1. DISTANCES AND DIMENSIONS SHOWN ARE EXPRESSED IN FEET AND DECIMALS THEREOF.
2. DATUM IS ASSUMED. BENCHMARK IS TOP OF CONTROL POINT IN LOCATION SHOWN HEREON. ELEVATION = 50.00'
3. CONTOUR INTERVAL IS ONE FOOT.
4. LOCATIONS OF SUBSURFACE UTILITIES ARE TAKEN FROM SURFACE MARKS TRACED BY UTILITY LOCATING SERVICES & OTHER SURFACE INDICATIONS. VERIFY IN FIELD PRIOR TO ANY EXCAVATION OR CONSTRUCTION.
5. THIS PROPERTY MAY BE SUBJECT TO EASEMENTS OF RECORD NOT SHOWN UPON THIS MAP. THE OWNER SHALL BE RESPONSIBLE FOR FURNISHING A TITLE REPORT TO DISCLOSE SUCH EASEMENTS WHICH MAY OR MAY NOT EXIST, AND MONTEREY COUNTY SURVEYORS, INC. SHALL BEAR NO RESPONSIBILITY FOR NON DISCLOSURE OF SAID EASEMENT(S), THEIR EXISTENCE OR LOCATION.
6. WATER LINES HAVE NOT BEEN TRACED AND ARE NOT SHOWN HEREON.



Legend

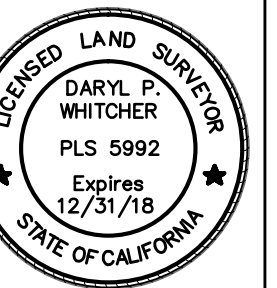
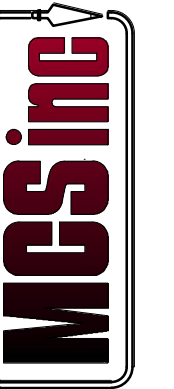
AD	area drain	I.	irrigation
AC	asphaltic concrete	Irr.	irrigation
ASV	Anti siphon valve	Inv.	invert
ASP	asphalt	JP	joint pole
BFP	backflow preventer	P	pavement
BRC	back of rolled curb	PMT	pad mount transformer
C/conc.	concrete	PP	power pole
CATV	cable TV	RD	roof drain
CB	catch basin	SDMH	storm drain manhole
CL	center line	SSMH	sanitary sewer manhole
DL	redwood deck	SSCO	sanitary sewer cleanout
DW	driveway	SO	shut off valve
DS	down spout	T	telephone
E	electric	TB	top of bank
EP	edge of pavement	TC	top of curb
FF	finish floor	TW	top of wall
FL	flow line	V	valve
FH	fire hydrant	WF	water fountain
G	Gas	W/L	water level
GH	greenhouse	WM	water meter
GR	ground	WH	warehouse
GV	gate valve	WV	water valve

Underground Utilities Legend	
	ELECTRICAL
	GAS
	COMMUNICATION
	SECURITY
	SANITARY SEWER
	WATER

Preliminary
subject to revision

REVISIONS

MONTEREY COUNTY SURVEYORS, INC.
235 Salinas Street, Salinas, CA 95001 ph:831.424.148-4
F:424.4094 email:mcs@montereycountysurveyors.com
Serving Monterey County since 1937



Topographic Survey
OF A PORTION OF T.14S, R.2E, IN THE RANCHO BUENA VISTA, WITHIN TORO REGIONAL PARK,
COMMONLY KNOWN AS QUAIL MEADOWS GROUP AREA, MONTEREY COUNTY, CA
prepared for
Tatum's Garden Toro - Quail Meadows Group Area

DATE: 3/31/2017

SCALE: 1"=30'

DRAWN BY: dpw

415-011-002

APN: 161-011-009

JOB NO. 2017.501

SHEET

1

OF FIVE SHEETS

This page intentionally left blank