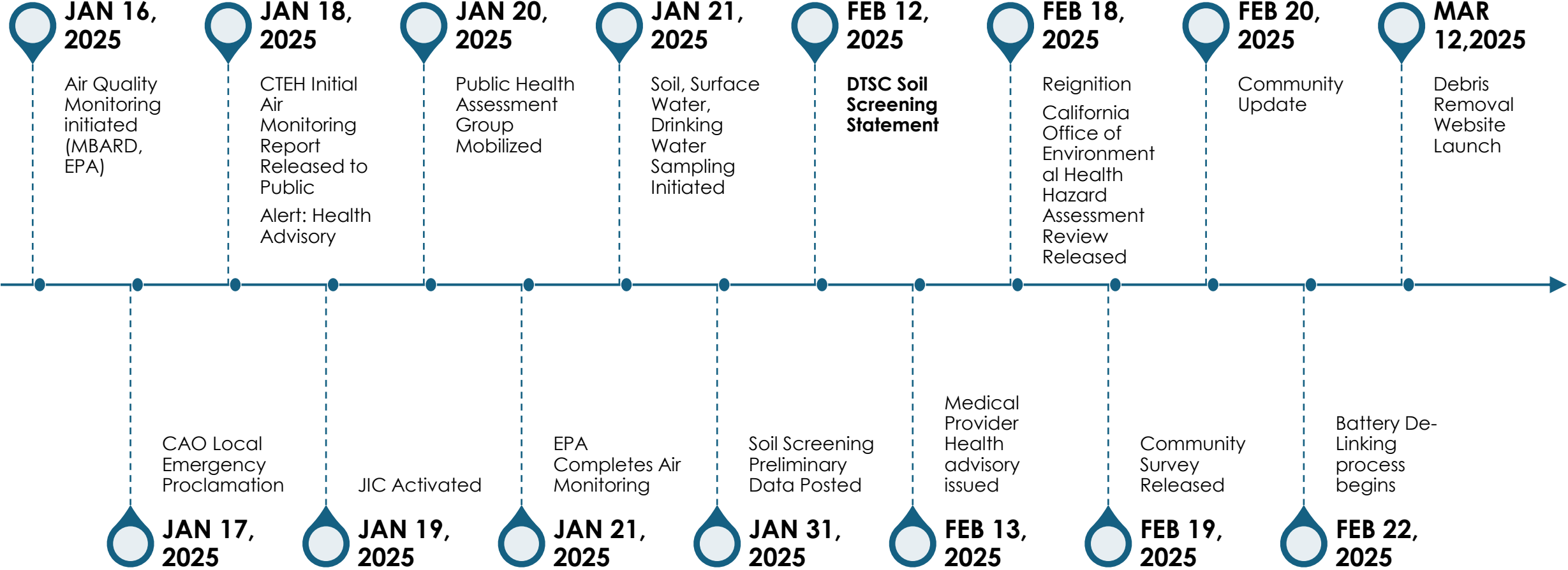


Moss300 BESS Structure Fire & Hazardous Materials Incident

3/18/25 Update



Response and Recovery Overview



By The Numbers | Incident Statistics

1,200 

People Evacuated

24 

Hours Evacuated

37 

Shelter Guests



9

Advisory Alerts



3

Evacuation Alerts



12

Total Alerts Disseminated



150

DEM



275

EHB



425

Total Calls

Public Hotline Phone Calls

Disaster Service Workers



121

Personnel



4,050

Staff Hours



49

Health



5

Ash-Debris



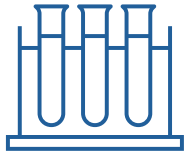
10

General



64

Concern Reports
Environmental Health Bureau



Health Assessment Team

CalEPA Multi-Agency Coordination Group

- **Request:** The County of Monterey Emergency Operations Center submitted a State Mission Task on XX for a Health Assessment Team
- **Mission:** To assist the County in the collection and communication of environmental sampling and monitoring.
- County is the lead agency supported by the MAC Group
- Regular weekly meetings

Agencies

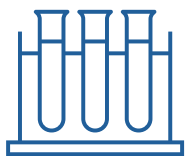
- California Environmental Protection Agency (CalEPA)
- United States Environmental Protection Agency (US EPA)
- California Air Resources Control Board (CARB)
- Office of Environmental Health Hazmat Assessment (OEHHA)
- California Waterboards
- California Dept. of Fish and Wildlife
- California Dept. of Toxic Substances Controls
- California Dept. of Public Health
- CalRecycle
- County of Monterey Health Department Environmental Health Bureau



Thank you, State of California.

Sub Working Groups

- Soil, Surface Water, and Debris Sampling
- Air and Health
- Drinking Water
- Biotic Resources



Health Assessment Team

Environmental Monitoring | Completed Tasks To Date

- ✓ Air Monitoring - Ongoing
- ✓ Drinking Water Sampling and Testing
- ✓ Soil & Dust Sampling and Testing
- ✓ Publication of Frequently Asked Questions developed in coordination with CARB, CDPH, DTSC and OEHHA
- ✓ Reorganization of Incident Webpage

Moss Landing Power Plant Fire FAQs

Webpage updated 03/06/2025 02:59 PM

General Information

1. Who can I contact about concerns related to the Moss Landing Battery Fire?	+
2. What do I do if there is visible fire residual (ash, soot, debris) on my property?	+
3. Who is responsible for cleaning up the fire damage at the power plant?	+
4. Which agency oversees clean-up of the fire?	+
5. Why is CTEH involved in the disaster response at Moss Landing?	+
6. When will the cleanup at Vistra begin?	+
7. How will the Vistra site be managed until clean-up is complete?	+
8. What information was used to make evacuation decisions?	+

Health

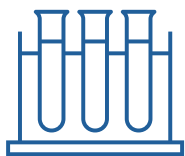
9. Can my kids play outside?	+
10. What do I do about my home garden?	+
11. Diabetics who use insulin may have their monitoring equipment affected by smoke from the fire. Is this something that has been considered?	+
12. My healthcare provider doesn't know how to treat me or diagnose my symptoms from exposure to the battery fire, what should I do?	+
13. Are mental health resources available for community members affected by the fire?	+
14. Will wildlife be sickened?	+

Soil and Surface Water

15. What may have been released onto the soil during the fire?	+
16. Is the soil being tested for fire residual?	+
17. What do the XRF readings mean?	+
18. How were the DTSC soil sampling locations selected?	+
19. When will additional soil testing will take place? PUBLISHED 02/26/2025	+
20. Can I have the soil on my private property tested for contamination?	+
21. I have surface wipe/soil sample analysis results; how can I share them with the County?	+

Air Quality

22. How do I know if my air quality is good?	+
--	---



Health Assessment Team

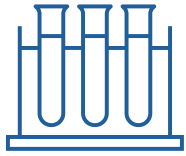
Environmental Monitoring

	Drinking Water	Soil & Dust
Agency	<ul style="list-style-type: none">County of Monterey - Environmental Health Bureau	<ul style="list-style-type: none">CA Department of Toxic Substances Control
Collection Date	01/24/2025	01/24/2025
Analysis	Results indicates that water is consistent with historical sampling information and does not exceed established drinking water standards .	Data indicates there are not elevated metals associated with the fire in soil.



Spotlight | Community Collaboration

- ✓ Never Again Moss Landing surface wipe summary
- ✓ Santa Cruz County surface water and agricultural sampling
- ✓ Analysis: Testing does not suggest elevated public health risks or food safety concerns



Health Assessment Team

Environmental Testing Statistics



Air

- US Environmental Protection Agency (US EPA)
- Monterey Bay Air Resources District
- CTEH



Water

- County of Monterey, Environmental Health Bureau
- County of Santa Cruz, Environmental Health
- CA Department of Toxic Substances Control



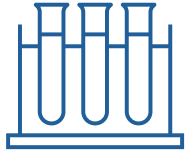
Soil & Dust

- CA Department of Toxic Substances Control
- County of Santa Cruz, Environmental Health & Agricultural Commissioner
- CTEH

Environmental Testing Map and Dashboard



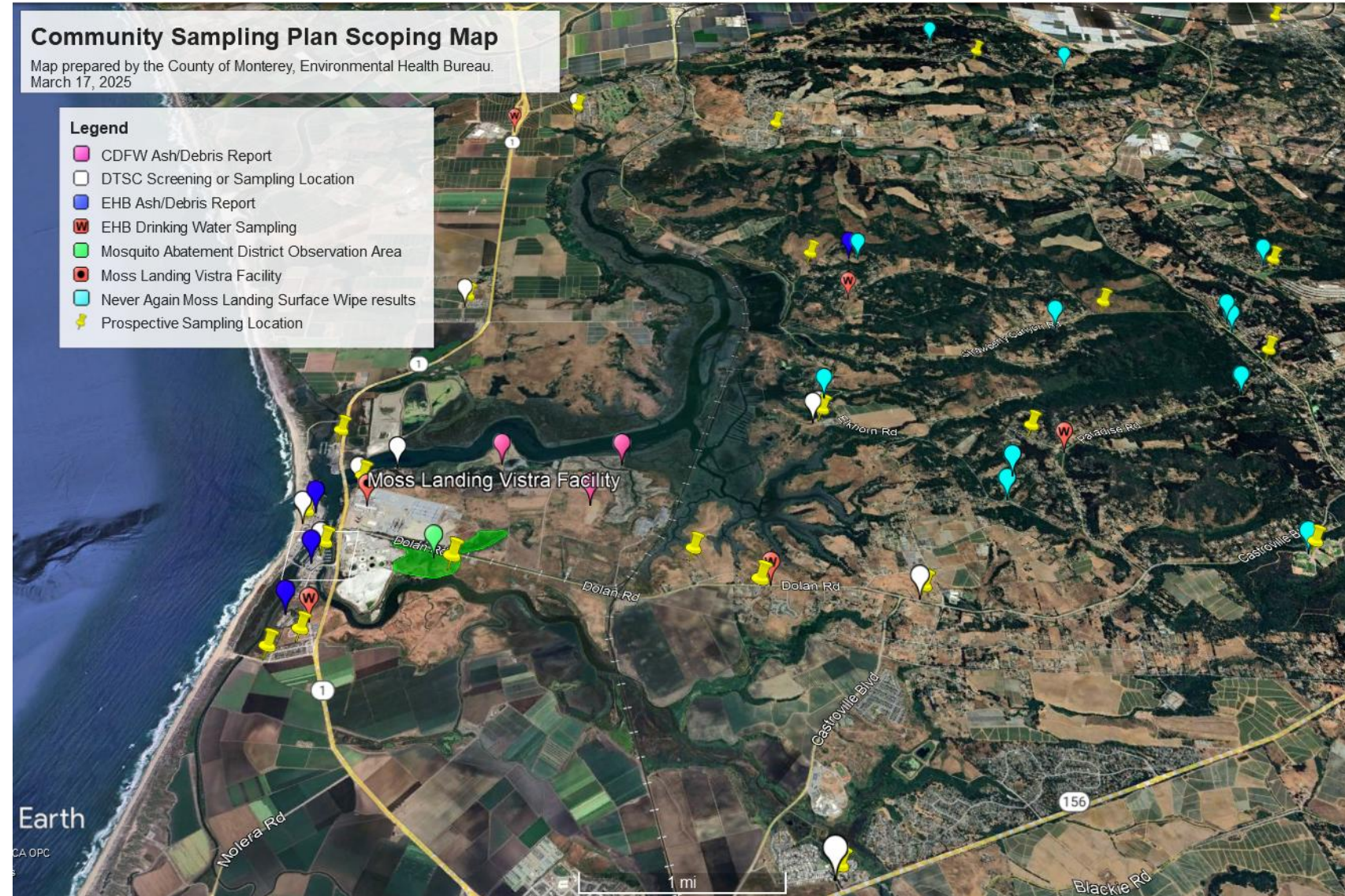
- Health Assessment Team is working to collate all sampling data in a geospatial Information Dashboard.
- This will include maps of potential contamination zone (soot plume model) and County-coordinated sampling
- Working toward an interactive application to organize and make available for public viewing air quality readings, water sampling analysis, and soil sampling analysis.



Health Assessment Team

Community Sampling Plan

- ❑ Seeks information necessary for a comprehensive Human Health Risk Assessment
- ❑ Focus on areas with reported visible debris
- ❑ Includes residential areas and around parks, schools and churches
- ❑ Includes follow-up sampling as recommended for DTSC's January soil sampling

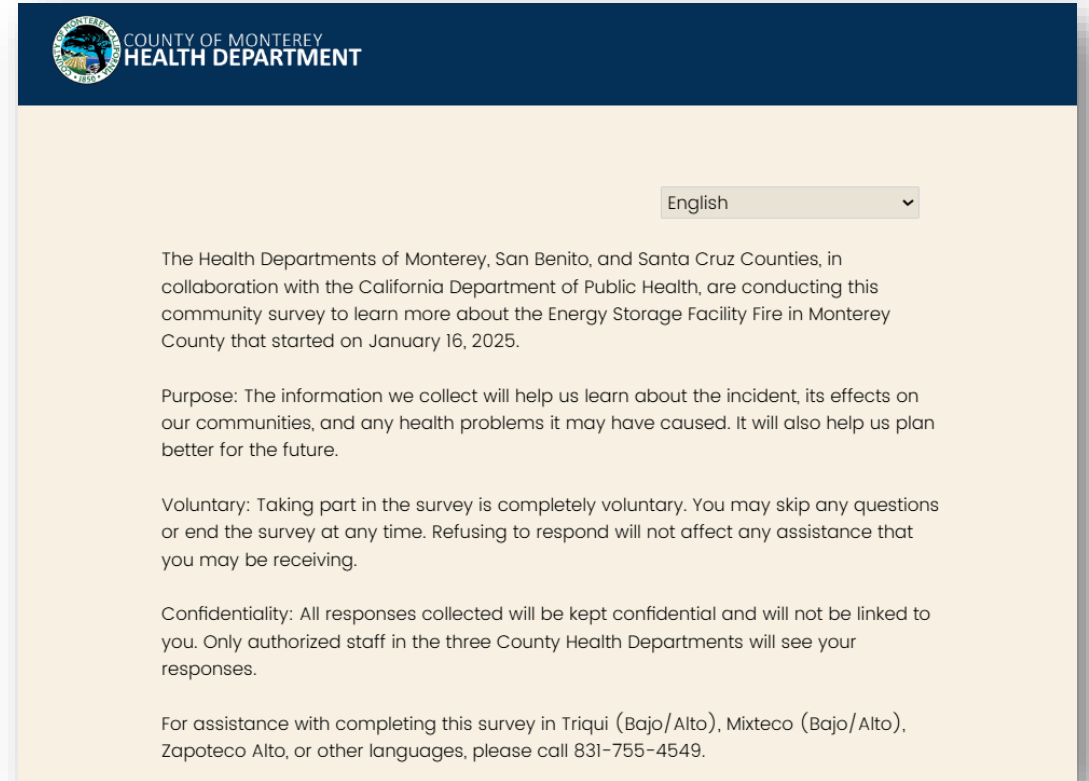




Health Assessment Team

Community Health Survey | Completed Tasks

- Purpose was to inform current & future public health response strategies
- Included questions about location, symptoms, and medical care
- Also asked about how health information was received during event
- Offered in English and Spanish electronically & in additional languages via telephone
- Responses will be summarized & released publicly on County fire website



**February 19,
2025**

Survey Open

**March 16,
2025**

Survey Closed

25

Days

22

Questions (max)

1,539

Responses



Recovery

- **Complex & Lengthy Process:** Length of recovery time is still unknown. Recovery will likely take several years.
- **Regulatory & Compliance Hurdles:** Extensive coordination with regulatory agencies and fire district.
- **Site Safety:** Personnel safety is the highest priority; Concerns include structural instability, hazardous materials, potential re-ignition risks, heavy equipment, transportation, etc.
- **Ongoing Testing & Monitoring:** Continuous air, soil, and water sampling inside and outside of the fence-line.
- **Operational Complexity:** Continuous and diligent strategizing on workplans with Subject Matter Experts and regulatory agencies to reduce safety risks and efficient remediation of the site.



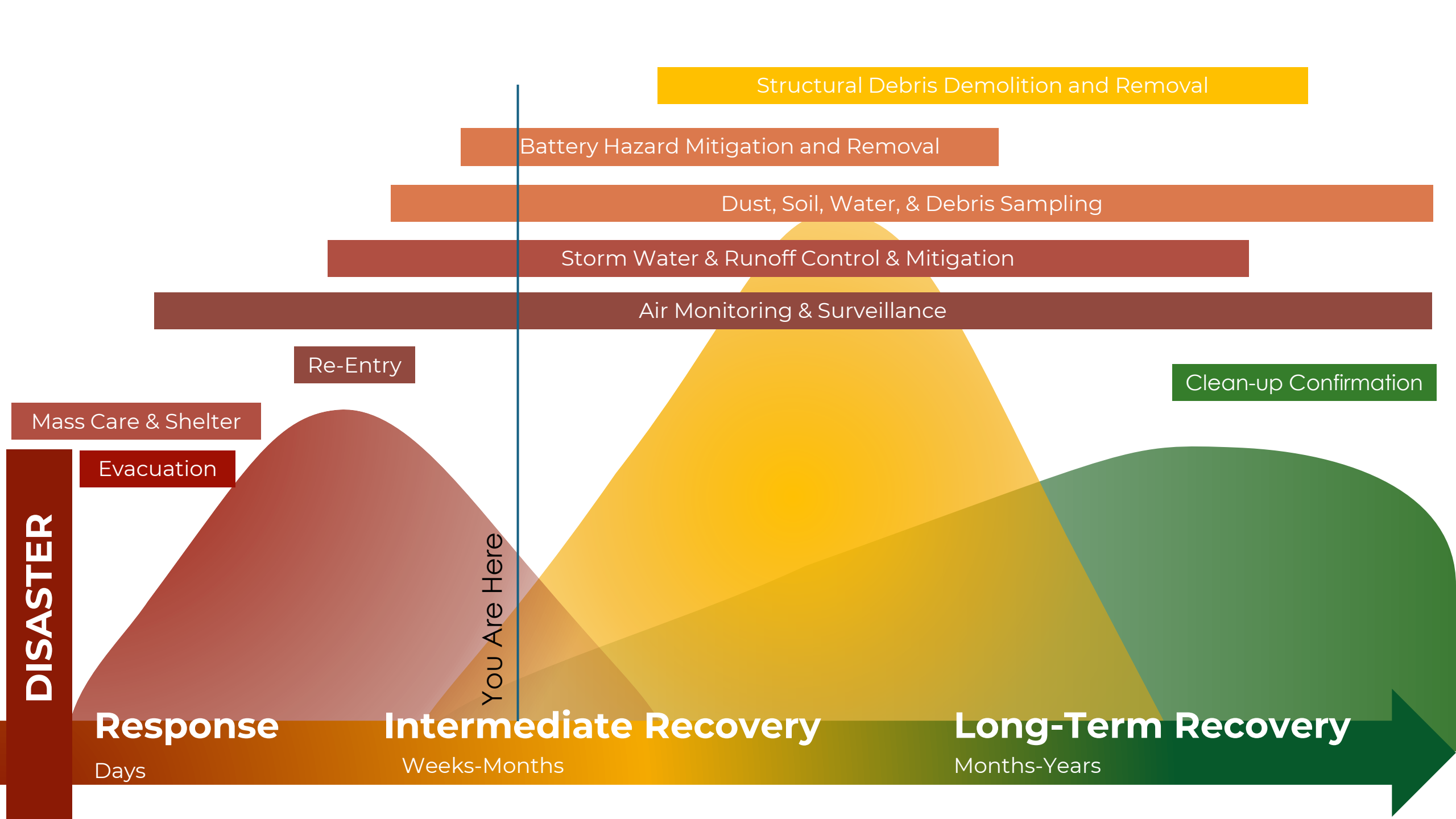


Debris Removal

The information provided is subject to change. Debris removal is a complex and lengthy process subject to change and information may be altered or removed as conditions require.



Phase	Phase One Battery Hazard Mitigation and Removal	Phase Two Structural Debris Demolition and Removal	Phase Three Clean-up Confirmation
Regulatory Oversight	<ul style="list-style-type: none"> • U.S. Environmental Protection Agency (EPA) • County of Monterey Health Department Environmental Health Bureau (EHB) • County of Monterey Housing and Community Development Department (HCD) 	<ul style="list-style-type: none"> • County of Monterey Health Department Environmental Health Bureau (EHB) • County of Monterey Housing and Community Development Department (HCD) 	<ul style="list-style-type: none"> • County of Monterey Health Department Environmental Health Bureau (EHB) • Central Coast Regional Water Quality Control Board • California's Department of Toxic Substances Control.
Status	In Progress	Not Started	Not Started
Steps	<ul style="list-style-type: none"> ✓ Battery De-Linking (Round 1) ❑ Battery Removal and Staging ❑ Emergency Structure Stabilization ❑ Battery De-Linking & Removal (Round 2) ❑ Battery De-energization ❑ Battery Packaging, Transport, & Disposal 	<ul style="list-style-type: none"> ❑ Structural Debris Removal, Staging, & Sorting ❑ Structural Demolition ❑ Structural Debris Transportation 	<ul style="list-style-type: none"> ❑ Site Cleanup and Restoration ❑ Inspection



DISASTER

Response

Days

Intermediate Recovery

Weeks-Months

Long-Term Recovery

Months-Years

You Are Here

Mass Care & Shelter

Evacuation

Re-Entry

Structural Debris Demolition and Removal

Battery Hazard Mitigation and Removal

Dust, Soil, Water, & Debris Sampling

Storm Water & Runoff Control & Mitigation

Air Monitoring & Surveillance

Clean-up Confirmation



Phase One | Battery Hazard Mitigation and Removal In Progress

Current Progress

✓ Battery De-Linking (Round 1) – Complete

- Vistra has completed de-link (or disconnect) of the remaining accessible lithium-ion battery racks at the 300-MW Phase 1 Moss Landing Battery Energy Storage facility, where the Jan. 16 fire and the Feb. 18 reignition occurred.
- The batteries were safely and efficiently disconnected from one another to reduce risk of overheating, thermal runaway, and fire propagation.
- The remaining inaccessible batteries are in areas of the building that are not currently safe to enter.

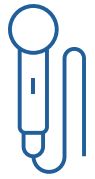
Next Steps

❑ Battery Removal and Staging – Planning

- Upon removal of batteries from the Moss300 building, batteries will be staged in preparation for transport.
- The staging area will be located away from the Moss300 building, but within the fenceline, with the intention of reducing the risk of reignition hazards.

❑ Emergency Structure Stabilization – Planning and Permitting

- Emergency demolition and structural stabilization of the fire-damaged building is needed to safely access remaining batteries during the debris removal process.
- The goal is to create a safe environment for the workers to perform battery removal.



Public Information

8,620

News Stories

6.08B

Reach



5

Press
Conferences



9

Press Briefings



700+

Media
Engagements



Joint Information Center

56

Days
Activated

36

Participating
Agencies

Vistra, North County Fire Protection District, Monterey County (County Administrator's Office, Public Health, Environmental Health, Emergency Management, Sheriff's Office, Agricultural Commissioner's Office), Counties of Santa Cruz and San Benito, US EPA, CalFire, California Highway Patrol, Taylor Farms, California Strawberry Commission, Grower Shipper Association, SEE Monterey (Hospitality).

Information Resources | ReadyMontereyCounty.org

35,632
Web View

20,528
Active Users



590
Web View

434
Active Users

