

Attachment B
Parcel Map

Tracy N. and Peggy S. Miller
PLN090145

Exhibit B

OWNER'S STATEMENT

WE HEREBY CERTIFY THAT WE ARE THE OWNERS OF OR HAVE SOME RIGHT, TITLE OR INTEREST IN AND TO, THE REAL PROPERTY INCLUDED WITHIN THE SUBDIVISION SHOWN UPON THIS INSTRUMENT. WE CONSENT TO PASS A CLEAR TITLE TO SAID PROPERTY, AND WE CONSENT TO THE PREPARATION AND RECORDATION OF SAID MAP AND SUBDIVISION AS SHOWN WITHIN THE SUBDIVISION BOUNDARY LINES.

Tracy N Miller
TRACY N MILLER
Peggy S Miller
PEGGY S MILLER

NOTARY ACKNOWLEDGMENT

STATE OF CALIFORNIA
COUNTY OF Monterey
ON July 5, 2012
BEFORE ME, Kimberley Woltema, NOTARY PUBLIC

PERSONALLY APPEARED Tracy N Miller and Peggy S Miller WHO PROVED TO ME ON THE BASIS OF SATISFACTORY EVIDENCE TO BE THE PERSONS WHOSE NAMES ARE SUBSCRIBED TO THE WITHIN INSTRUMENT AND ACKNOWLEDGED THE SAME AND THAT BY THEIR SIGNATURES ON THE INSTRUMENT THE PERSONS, OR THE ENTITY UPON BEHALF OF WHICH THE PERSONS ACTED, EXECUTED THE INSTRUMENT.

I CERTIFY UNDER PENALTY OF PERJURY UNDER THE LAWS OF THE STATE OF CALIFORNIA THAT THE FOREGOING PARAGRAPH IS TRUE AND CORRECT.

WITNESS MY HAND
SIGNATURE: Kimberley Woltema
NOTARY NAME Kimberley Woltema
MY COMMISSION EXPIRES May 22, 2015
NOTARY COMMISSION NUMBER 1933871
COUNTY OF PRINCIPAL PLACE OF BUSINESS Monterey

DEEDS OF TRUST

FIRST NATIONAL BANK OF CENTRAL CALIFORNIA, A DIVISION OF PACIFIC CAPITAL BANK, N.A. AND TRUSTEES OF THE DEEDS OF TRUST UNDER NUMBER 2006105716, OFFICIAL RECORDS, MONTEREY COUNTY, CALIFORNIA.

SIGNATURES OF THE BENEFICIARY AND TRUSTEE OF THE ABOVE DEEDS OF TRUST HAVE BEEN OMITTED UNDER THE PROVISIONS OF SECTION 664429(a) OF THE GOVERNMENT CODE.

EASEMENT HOLDERS

PACIFIC BELL, A CORPORATION, AS EASEMENT HOLDER UNDER THAT DOCUMENT RECORDED JUNE 3, 2000, AS INSTRUMENT NO. 2000036774 OF OFFICIAL RECORDS OF MONTEREY COUNTY, CALIFORNIA.

SIGNATURES OF THE ABOVE EASEMENT HOLDERS HAVE BEEN OMITTED UNDER THE PROVISIONS OF SECTION 66438 (a) (3) (A) (I) OF THE GOVERNMENT CODE.

COUNTY SURVEYOR'S STATEMENT

I, Michael K Goetz, COUNTY SURVEYOR OF MONTEREY COUNTY, HEREBY STATE THAT I HAVE EXAMINED THIS MAP, THAT THE SUBDIVISION AS SHOWN HEREON IS SUBSTANTIALLY THE SAME AS IT APPEARED ON THE TENTATIVE MAP AND ANY APPROVED ALTERATIONS THEREOF, AS APPROVED BY ME ON AUGUST 13, 2010, AND ANY APPROVED ALTERATIONS THEREOF, THAT ALL THE PROVISIONS OF THE CALIFORNIA 'SUBDIVISION MAP ACT', AS AMENDED, AND MONTEREY COUNTY CODE, TITLE 19, HAVE BEEN COMPLIED WITH, AND I AM SATISFIED THAT THE MAP IS TECHNICALLY CORRECT.



Michael K Goetz
COUNTY SURVEYOR
MONTEREY COUNTY, CALIFORNIA

DATE: 8-20-12

SURVEYOR'S STATEMENT

THIS MAP WAS PREPARED BY ME OR UNDER MY DIRECTION AND IS BASED ON A FIELD SURVEY IN CONFORMANCE WITH THE REQUIREMENTS OF THE SUBDIVISION MAP ACT AND LOCAL ORDINANCE AT THE REQUEST OF TRACY N MILLER & PEGGY S MILLER. THIS PARCEL MAP SUBSTANTIALLY CONFORMS TO THE APPROVED OR CONDITIONALLY APPROVED TENTATIVE MAP, IF ANY. ALL MONUMENTS ARE OF THE CHARACTER AND OCCUPY THE POSITIONS INDICATED, OR WILL BE SET IN THOSE POSITIONS ON OR BEFORE ONE YEAR AFTER THE RECORDATION OF THIS MAP. THE SURVEY AND THE MONUMENTS ON WILL BE, SUFFICIENT TO ENABLE THE SURVEY TO BE RETRACED.

(SIGNED AND SEALED) Richard P. Weber
RICHARD P. WEBER, L.S. 8002



RECORDER'S STATEMENT

FILED THIS 20 DAY OF August, 2011 AT 11:00 A.M.
IN VOLUME 1933871 OF PARCEL MAPS AT PAGE 1, AT THE REQUEST OF WHITSON ENGINEERS.

COUNTY RECORDER, MONTEREY COUNTY
BY: _____ DEPUTY
FEE \$: _____

ADDITIONAL INFORMATION

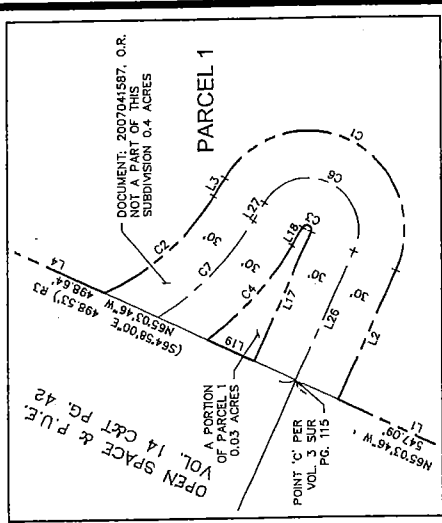
THE FOLLOWING ADDITIONAL INFORMATION IS FOR INFORMATIONAL PURPOSES: DESCRIBING CONDITIONS AS OF THE DATE OF FILING, AND IS NOT INTENDED TO AFFECT RECORD TITLE INTEREST. THE ADDITIONAL INFORMATION IS DERIVED FROM THE RESOLUTION OF APPROVAL FOR THIS SUBDIVISION BY THE MONTEREY COUNTY MINOR SUBDIVISION COMMITTEE, (MS RESOLUTION NO. 10011)
1. THE 30 FOOT WIDE ACCESS ROAD AND UTILITY EASEMENT IS FOR THE BENEFIT OF BOTH LOTS 1 AND 2 AND ALSO THE PARCEL CURRENTLY SHOWN AS 'REMAINDER PARCEL'.
2. THE REMAINDER PARCEL HAS NOT BEEN DIVIDED FOR THE PURPOSES OF SALE, LEASE OR FINANCING, OR ISSUANCE OF PERMITS FOR FUTURE DEVELOPMENT UNTIL A CONDITIONAL CERTIFICATE OF COMPLIANCE HAS BEEN ISSUED BY THE COUNTY OF MONTEREY.

PLN 090145
PARCEL MAP
A MINOR SUBDIVISION

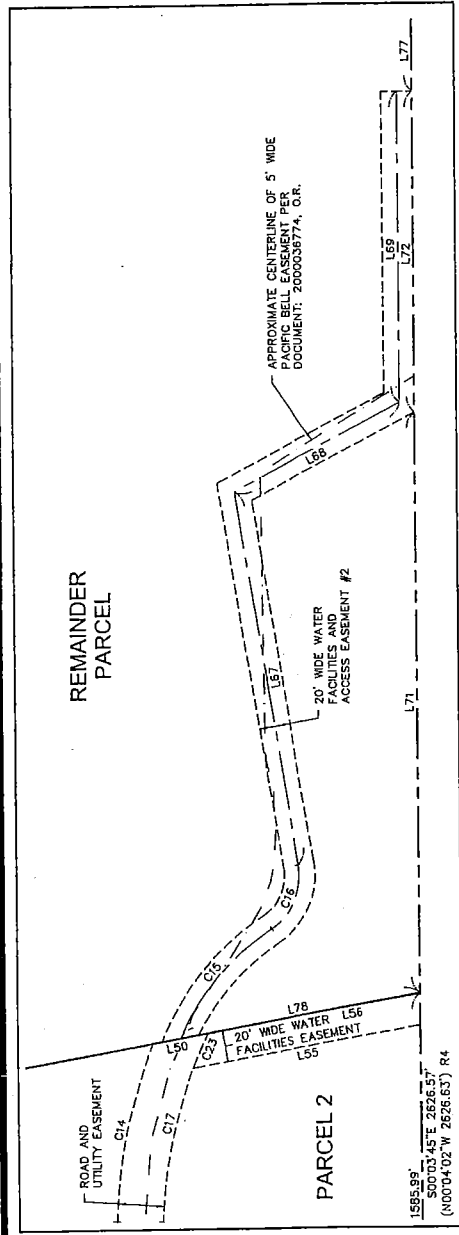
OF
A PORTION OF RANCHO CORRAL DE TIERRA
MONTEREY COUNTY, CALIFORNIA

PREPARED BY
WE WHITSON ENGINEERS
9699 Blue Larkspur Lane • Suite 105 • Monterey, CA 93940
831 649-5225 • Fax 831 373-5065

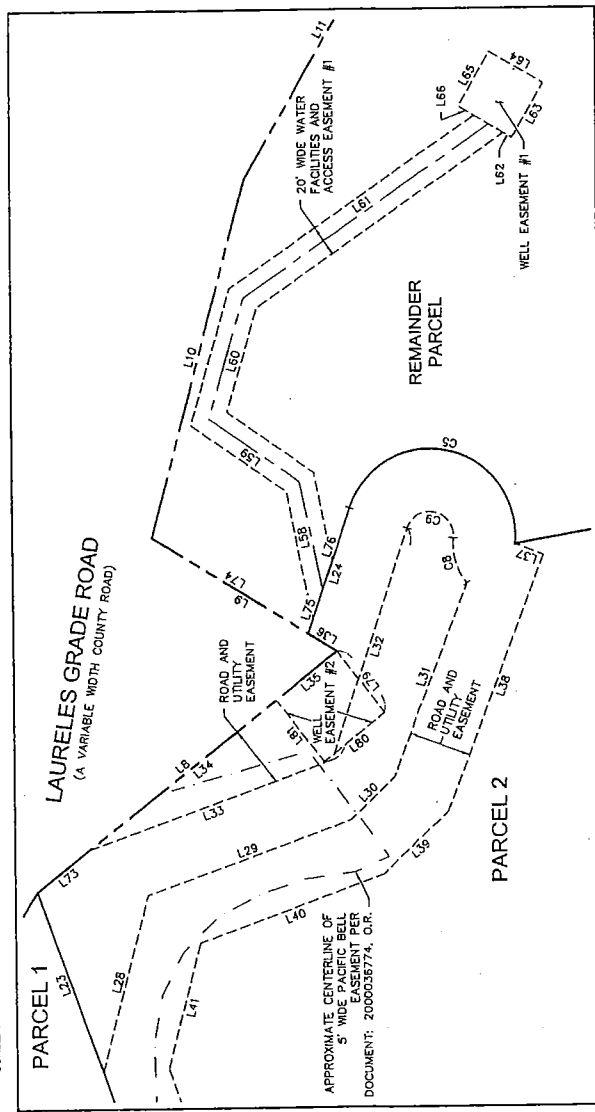
Exhibit B



DETAIL B
SCALE: 1" = 50'



DETAIL A
SCALE: 1" = 50'



DETAIL C
SCALE: 1" = 50'

PLN 090145
PARCEL MAP
 A MINOR SUBDIVISION

OF
 A PORTION OF RANCHO CORRAL DE TIERRA
 MONTEREY COUNTY, CALIFORNIA
 PREPARED BY

WEI WHITSON ENGINEERS
 9699 Blue Larkspur Lane • Suite 105 • Monterey, CA 93940
 831 649-5225 • Fax 831 373-5065

CIVIL ENGINEERING • LAND SURVEYING • PROJECT MANAGEMENT
 APRIL 2011
 SHEET 3 OF 4

Exhibit B

BOUNDARY COURSE TABLE			
MEASURED DATA		RECORD DATA	
COURSE	BEARING	DISTANCE	DISTANCE
L17	N24°49'14"E	89.80'	89.86' R2
L18	S32°24'14"W	13.56'	13.56' R2
L19	S85°03'48"E	33.08'	33.08' R2
COURSE		DELTA	LENGTH
C3	172°25'00"	3.00'	9.03'
C4	212°21'11"	217.78'	61.23'

DOCUMENT: 2007041567 CENTERLINE COURSE TABLE			
MEASURED DATA		RECORD DATA	
COURSE	BEARING	DISTANCE	DISTANCE
L26	N24°49'14"E	89.86'	89.86' R2
L27	S32°24'14"W	13.56'	13.56' R2
COURSE		DELTA	LENGTH
C6	172°25'00"	3.00'	9.03'
C7	26°35'00"	197.78'	87.12'

PARCEL LINE COURSE TABLE			
COURSE	BEARING	DISTANCE	DISTANCE
L20	N31°54'32"W	967.35'	967.35'
L21	N43°15'50"W	178.91'	178.91'
L22	N19°35'40"W	237.34'	237.34'
L23	N19°57'52"E	84.12'	84.12'
L24	N19°48'09"E	115.72'	115.72'
L25	N70°20'15"E	138.91'	138.91'
L26	N46°44'02"E	40.04'	40.04'
L27	N20°36'49"E	130.86'	130.86'
L28	S70°20'15"W	184.98'	184.98'
L29	N51°53'20"E	80.00'	80.00'
L30	N88°03'41"E	21.84'	21.84'
L31	S89°58'00"W	174.47'	174.47'
L32	S26°44'02"W	57.55'	57.55'
L33	S70°20'15"W	126.21'	126.21'
L34	S14°48'08"W	82.28'	82.28'
L35	S19°36'20"E	120.75'	120.75'
L36	S70°23'40"W	10.00'	10.00'
L37	S18°35'20"E	97.97'	97.97'
L38	S43°15'50"E	122.07'	122.07'
L39	N29°27'18"E	111.46'	111.46'
L40	N42°49'26"E	37.69'	37.69'
L41	N22°19'34"E	80.45'	80.45'
L42	N00°02'10"W	124.06'	124.06'
L43	N80°03'41"E	36.27'	36.27'
L44	S00°02'10"E	123.50'	123.50'
L45	S22°19'34"W	80.07'	80.07'
L46	S42°49'26"W	37.69'	37.69'
L47	S59°27'18"W	114.76'	114.76'
L48	S16°09'49"E	55.09'	55.09'
L49	S16°09'49"E	55.09'	55.09'
L50	S16°09'49"E	55.09'	55.09'
L51	S16°09'49"E	55.09'	55.09'
L52	S16°09'49"E	55.09'	55.09'
L53	S16°09'49"E	55.09'	55.09'
L54	S16°09'49"E	55.09'	55.09'
L55	S16°09'49"E	55.09'	55.09'
L56	S16°09'49"E	55.09'	55.09'
L57	S16°09'49"E	55.09'	55.09'
L58	S16°09'49"E	55.09'	55.09'
L59	S16°09'49"E	55.09'	55.09'
L60	S16°09'49"E	55.09'	55.09'
L61	S16°09'49"E	55.09'	55.09'
L62	S16°09'49"E	55.09'	55.09'
L63	S16°09'49"E	55.09'	55.09'
L64	S16°09'49"E	55.09'	55.09'
L65	S16°09'49"E	55.09'	55.09'
L66	S16°09'49"E	55.09'	55.09'
L67	S16°09'49"E	55.09'	55.09'
L68	S16°09'49"E	55.09'	55.09'
L69	S16°09'49"E	55.09'	55.09'
L70	S16°09'49"E	55.09'	55.09'
L71	S16°09'49"E	55.09'	55.09'
L72	S16°09'49"E	55.09'	55.09'
L73	S16°09'49"E	55.09'	55.09'
L74	S16°09'49"E	55.09'	55.09'
L75	S16°09'49"E	55.09'	55.09'
L76	S16°09'49"E	55.09'	55.09'
L77	S16°09'49"E	55.09'	55.09'
L78	S16°09'49"E	55.09'	55.09'

20' WIDE WATER FACILITIES AND ACCESS EASEMENT #1			
COURSE	BEARING	DISTANCE	DISTANCE
L35	N81°53'20"E	80.00'	80.00'
L36	N88°03'41"E	21.84'	21.84'
L37	S89°58'00"W	174.47'	174.47'
L38	S26°44'02"W	57.55'	57.55'
L39	S70°20'15"W	126.21'	126.21'
L40	S14°48'08"W	82.28'	82.28'
L41	S19°36'20"E	120.75'	120.75'
L42	S70°23'40"W	10.00'	10.00'
L43	S18°35'20"E	97.97'	97.97'
L44	S43°15'50"E	122.07'	122.07'
L45	N29°27'18"E	111.46'	111.46'
L46	N42°49'26"E	37.69'	37.69'
L47	N22°19'34"E	80.45'	80.45'
L48	N00°02'10"W	124.06'	124.06'
L49	N80°03'41"E	36.27'	36.27'
L50	S00°02'10"E	123.50'	123.50'
L51	S22°19'34"W	80.07'	80.07'
L52	S42°49'26"W	37.69'	37.69'
L53	S59°27'18"W	114.76'	114.76'
L54	S16°09'49"E	55.09'	55.09'
L55	S16°09'49"E	55.09'	55.09'
L56	S16°09'49"E	55.09'	55.09'
L57	S16°09'49"E	55.09'	55.09'
L58	S16°09'49"E	55.09'	55.09'
L59	S16°09'49"E	55.09'	55.09'
L60	S16°09'49"E	55.09'	55.09'
L61	S16°09'49"E	55.09'	55.09'
L62	S16°09'49"E	55.09'	55.09'
L63	S16°09'49"E	55.09'	55.09'
L64	S16°09'49"E	55.09'	55.09'
L65	S16°09'49"E	55.09'	55.09'
L66	S16°09'49"E	55.09'	55.09'
L67	S16°09'49"E	55.09'	55.09'
L68	S16°09'49"E	55.09'	55.09'
L69	S16°09'49"E	55.09'	55.09'
L70	S16°09'49"E	55.09'	55.09'
L71	S16°09'49"E	55.09'	55.09'
L72	S16°09'49"E	55.09'	55.09'
L73	S16°09'49"E	55.09'	55.09'
L74	S16°09'49"E	55.09'	55.09'
L75	S16°09'49"E	55.09'	55.09'
L76	S16°09'49"E	55.09'	55.09'
L77	S16°09'49"E	55.09'	55.09'
L78	S16°09'49"E	55.09'	55.09'

20' WIDE WATER FACILITIES AND ACCESS EASEMENT #2			
COURSE	BEARING	DISTANCE	DISTANCE
L67	N09°26'47"W	241.08'	241.08'
L68	N67°42'22"E	120.52'	120.52'
L69	N00°03'45"W	197.43'	197.43'
L70	S31°02'25"	160.00'	160.00'
L71	S65°49'15"	40.00'	40.00'
L72	S16°09'49"E	55.09'	55.09'
L73	S16°09'49"E	55.09'	55.09'
L74	S16°09'49"E	55.09'	55.09'
L75	S16°09'49"E	55.09'	55.09'
L76	S16°09'49"E	55.09'	55.09'
L77	S16°09'49"E	55.09'	55.09'
L78	S16°09'49"E	55.09'	55.09'

WELL EASEMENT #1			
COURSE	BEARING	DISTANCE	DISTANCE
L62	S59°45'55"E	17.23'	17.23'
L63	N301°4'05"E	40.00'	40.00'
L64	N59°45'55"W	40.00'	40.00'
L65	S301°4'05"W	40.00'	40.00'
L66	S59°45'55"E	22.77'	22.77'

WELL EASEMENT #2			
COURSE	BEARING	DISTANCE	DISTANCE
L67	N09°26'47"W	241.08'	241.08'
L68	N67°42'22"E	120.52'	120.52'
L69	N00°03'45"W	197.43'	197.43'
L70	S31°02'25"	160.00'	160.00'
L71	S65°49'15"	40.00'	40.00'
L72	S16°09'49"E	55.09'	55.09'
L73	S16°09'49"E	55.09'	55.09'
L74	S16°09'49"E	55.09'	55.09'
L75	S16°09'49"E	55.09'	55.09'
L76	S16°09'49"E	55.09'	55.09'
L77	S16°09'49"E	55.09'	55.09'
L78	S16°09'49"E	55.09'	55.09'

WELL EASEMENT #3			
COURSE	BEARING	DISTANCE	DISTANCE
L67	N09°26'47"W	241.08'	241.08'
L68	N67°42'22"E	120.52'	120.52'
L69	N00°03'45"W	197.43'	197.43'
L70	S31°02'25"	160.00'	160.00'
L71	S65°49'15"	40.00'	40.00'
L72	S16°09'49"E	55.09'	55.09'
L73	S16°09'49"E	55.09'	55.09'
L74	S16°09'49"E	55.09'	55.09'
L75	S16°09'49"E	55.09'	55.09'
L76	S16°09'49"E	55.09'	55.09'
L77	S16°09'49"E	55.09'	55.09'
L78	S16°09'49"E	55.09'	55.09'

THE COURSE TABLE			
COURSE	BEARING	DISTANCE	DISTANCE
L71	N00°03'45"W	269.17'	269.17'
L72	N00°03'45"W	203.53'	203.53'
L73	N51°53'20"E	44.08'	44.08'
L74	N59°03'25"W	117.16'	117.16'
L75	N18°52'52"E	29.21'	29.21'
L76	N18°52'52"E	54.91'	54.91'
L77	N00°03'45"W	467.88'	467.88'
L78	N60°03'41"E	157.85'	157.85'

ROAD AND UTILITY EASEMENT			
COURSE	BEARING	DISTANCE	DISTANCE
L21	N43°15'50"W	178.91'	178.91'
L22	N19°35'40"W	237.34'	237.34'
L23	N19°57'52"E	84.12'	84.12'
L24	N19°48'09"E	115.72'	115.72'
L25	N70°20'15"E	138.91'	138.91'
L26	N46°44'02"E	40.04'	40.04'
L27	N20°36'49"E	130.86'	130.86'
L28	S70°20'15"W	184.98'	184.98'
L29	N51°53'20"E	80.00'	80.00'
L30	N88°03'41"E	21.84'	21.84'
L31	S89°58'00"W	174.47'	174.47'
L32	S26°44'02"W	57.55'	57.55'
L33	S70°20'15"W	126.21'	126.21'
L34	S14°48'08"W	82.28'	82.28'
L35	S19°36'20"E	120.75'	120.75'
L36	S70°23'40"W	10.00'	10.00'
L37	S18°35'20"E	97.97'	97.97'
L38	S43°15'50"E	122.07'	122.07'
L39	N29°27'18"E	111.46'	111.46'
L40	N42°49'26"E	37.69'	37.69'
L41	N22°19'34"E	80.45'	80.45'
L42	N00°02'10"W	124.06'	124.06'
L43	N80°03'41"E	36.27'	36.27'
L44	S00°02'10"E	123.50'	123.50'
L45	S22°19'34"W	80.07'	80.07'
L46	S42°49'26"W	37.69'	37.69'
L47	S59°27'18"W	114.76'	114.76'
L48	S16°09'49"E	55.09'	55.09'
L49	S16°09'49"E	55.09'	55.09'
L50	S16°09'49"E	55.09'	55.09'
L51	S16°09'49"E	55.09'	55.09'
L52	S16°09'49"E	55.09'	55.09'
L53	S16°09'49"E	55.09'	55.09'
L54	S16°09'49"E	55.09'	55.09'
L55	S16°09'49"E	55.09'	55.09'
L56	S16°09'49"E	55.09'	55.09'
L57	S16°09'49"E	55.09'	55.09'
L58	S16°09'49"E	55.09'	55.09'
L59	S16°09'49"E	55.09'	55.09'
L60	S16°09'49"E	55.09'	55.09'
L61	S16°09'49"E	55.09'	55.09'
L62	S16°09'49"E	55.09'	55.09'
L63	S16°09'49"E	55.09'	55.09'
L64	S16°09'49"E	55.09'	55.09'
L65	S16°09'49"E	55.09'	55.09'
L66	S16°09'49"E	55.09'	55.09'
L67	S16°09'49"E	55.09'	55.09'
L68	S16°09'49"E	55.09'	55.09'
L69	S16°09'49"E	55.09'	55.09'
L70	S		