

# COST ESTIMATES

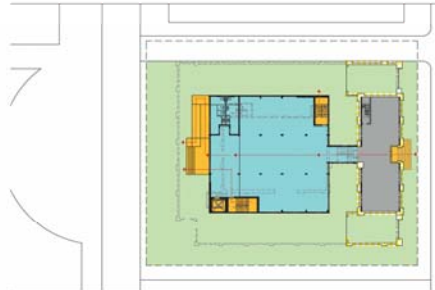
<b>OPTIONS</b>	<b>APPROX. AREA</b>	<b>ESTIMATED PROJECT COST</b>	<b>ESTIMATED COST/SF</b>
Scheme 1 – Remove Jail/Convert to parking or landscaped area	17,700 GSF	\$3,062,008	\$173
Scheme 2 - Save Historic Alisal Facade with New Building behind	20,550 GSF	\$29,060,240	\$1,414
Scheme 3 - Retain Admin Wing with New Building behind	20,550 GSF	\$19,878,806	\$967
Scheme 4 - Rehab Original 1930 Construction with New First Floor	22,650 GSF	\$18,587,634	\$821
Scheme 5 - Full Rehabilitation of Entire Jail	23,325 GSF	\$13,532,983	\$580
Scheme 6 - Full Preservation (Mothballing) Facility	30,095 GSF	\$2,092,969	\$70
Scheme 7 - Alisal Façade Preservation with Park	N/A	\$8,000,000	N/A
Scheme 8 - 1930 Restoration of Original Jail	20,000 GSF	\$25,000,000	\$1,250
Scheme 9 – Remove Jail/replace with New Commemorative Park	TBD	TBD	N/A



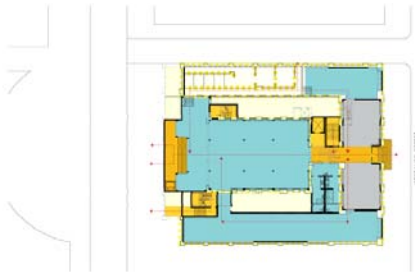
Scheme 1



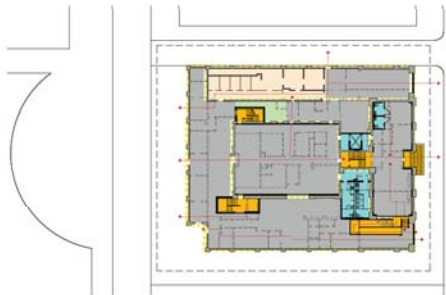
Scheme 2



Scheme 3



Scheme 4



Scheme 5



Scheme 6

