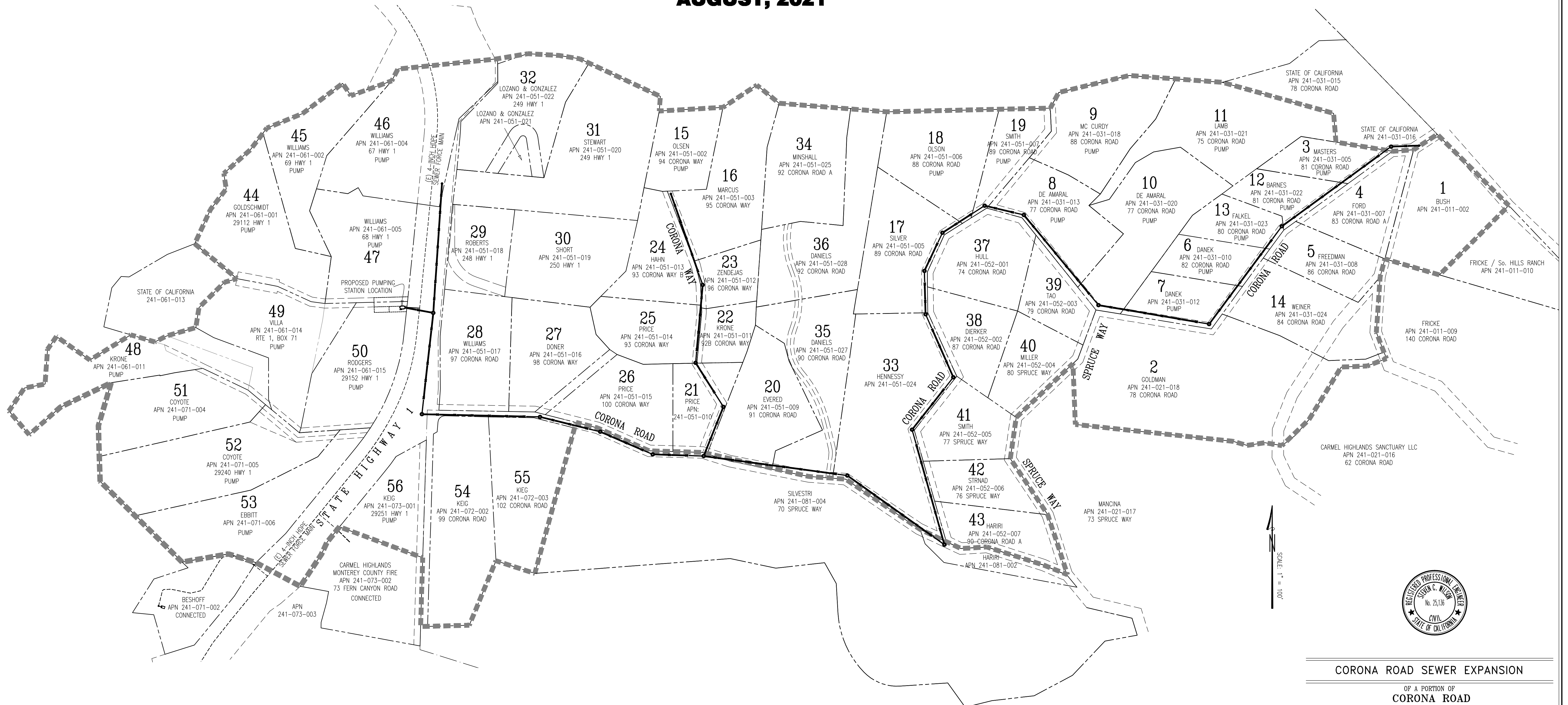


PROPOSED SEWER MAIN EXPANSION CORONA ROAD CONCEPTUAL PLANS

PREPARED FOR
CARMEL AREA WASTEWATER DISTRICT
AUGUST, 2021



SCALE: 1" = 100'

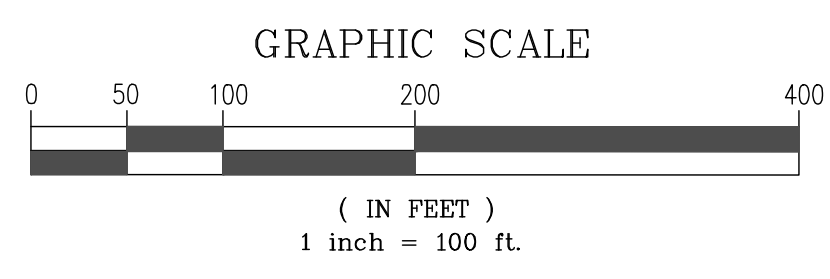


LEGEND:

- 53 ASSESSMENT NUMBER OF PROPERTY
- PROPOSED SANITARY SEWER MANHOLE
- SS— PROPOSED SANITARY SEWER LINE
- PROPOSED ASSESSMENT DISTRICT BOUNDARY
- SIGNED PETITION TO BEGIN ASSESSMENT DISTRICT

NOTES:

1. BOUNDARY INFORMATION SHOWN IS FROM THE RECORD DATA. A FULL BOUNDARY DETERMINATION WAS NOT DONE FOR THE PROPERTIES SHOWN.
2. DISTANCES SHOWN ARE IN FEET AND DECIMALS THEREOF.
3. EASEMENTS SHOWN HEREON ARE SHOWN BASED ON THE PROPERTY DEEDS AND RECORD MAP REFERENCES. TITLE REPORTS WERE NOT PROVIDED FOR THESE PROPERTIES, THEREFORE ALL EASEMENTS THAT AFFECT THIS PROPERTY MAY NOT BE SHOWN AND FURTHERMORE THE EASEMENTS SHOWN MAY NOT BE CURRENT ENCUMBRANCES OR BENEFITS TO THE PROPERTY.
4. SHADED AREAS INDICATE PROPERTY OWNERS THAT HAVE SUPPORTED THE SEWER EXPANSION.
4. TOPOGRAPHIC INFORMATION SHOWN ON THIS MAP IDENTIFY THE EDGE OF PAVEMENT AND SURFACE EVIDENCE OF UTILITIES THAT MAY AFFECT THE THE PROPOSED SEWER SYSTEM.



CORONA ROAD SEWER EXPANSION

OF A PORTION OF
CORONA ROAD
AND OF
CORONA WAY

CARMEL HIGHLANDS COUNTY OF MONTEREY STATE OF CALIFORNIA

PREPARED FOR
CARMEL AREA WASTEWATER DISTRICT

BY
MONTEREY BAY ENGINEERS, INC.
CIVIL ENGINEERING • SUBDIVISIONS • LAND SURVEYING • CONSTRUCTION STAKING
607 Charles Ave Suite B Seaside, California 93955
Phone: (831) 899-7899

SCALE: 1" = 100' JOB No. 21-071 AUGUST 2021
LAST REVISION NOV 29, 2021 DRAWN BY: SCW & RNT SHEET 1 OF 3