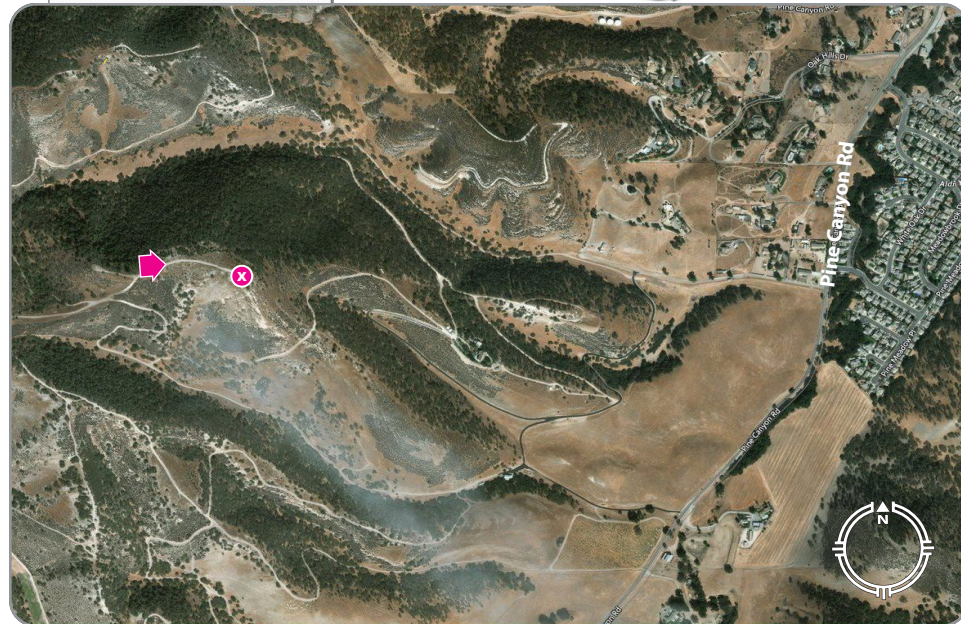


Exhibit F

This page intentionally left blank.

Microsoft® Virtual Earth™

LOCATION

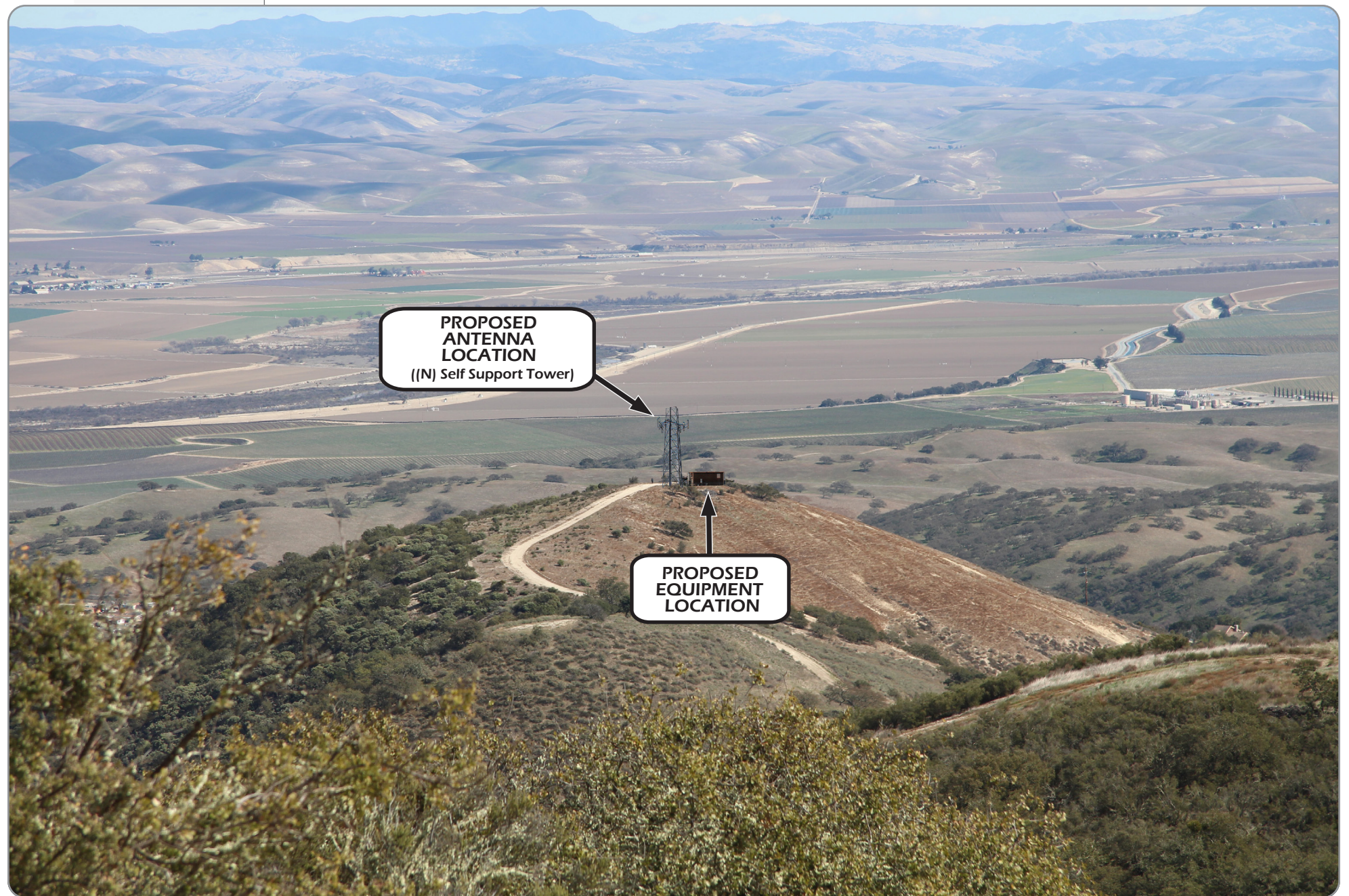


View from the West looking East

EXISTING



PROPOSED



Completed May 09, 2018

CCL04830
Cuervo Holdings

51500 Pine Canyon
 King City, CA 93930

VIEW 1

APPLICANT

AT&T Mobility
 5001 Executive Parkway
 San Ramon, CA 94583

CONTACT

TSJ Consulting Inc.
 Tom Johnson
 27130 Paseo Espada
 Suite #A-1426
 San Juan Capistrano, CA 92675
 p 925.785.3727

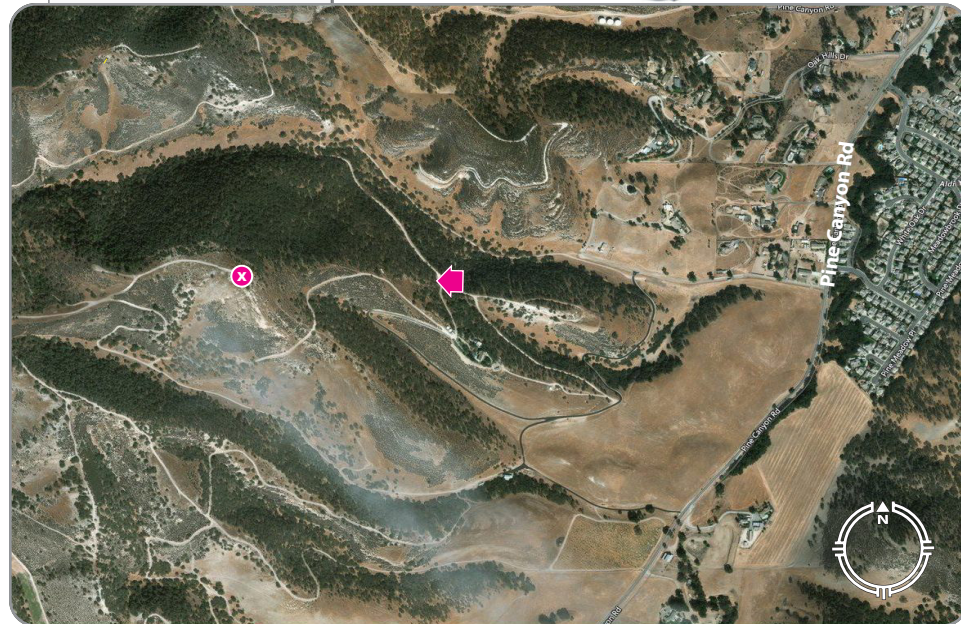


BLUE WATER DESIGN

bluewater-design.net
 michelle@bluewater-design.net
 p 425.615.0944

LOCATION

Microsoft® Virtual Earth™



View from the East looking West

EXISTING



PROPOSED



Completed May 09, 2018

CCL04830
Cuervo Holdings

51500 Pine Canyon
 King City, CA 93930

VIEW 2

APPLICANT

AT&T Mobility
 5001 Executive Parkway
 San Ramon, CA 94583

CONTACT

TSJ Consulting Inc.
 Tom Johnson
 27130 Paseo Espada
 Suite #A-1426
 San Juan Capistrano, CA 92675
 p 925.785.3727



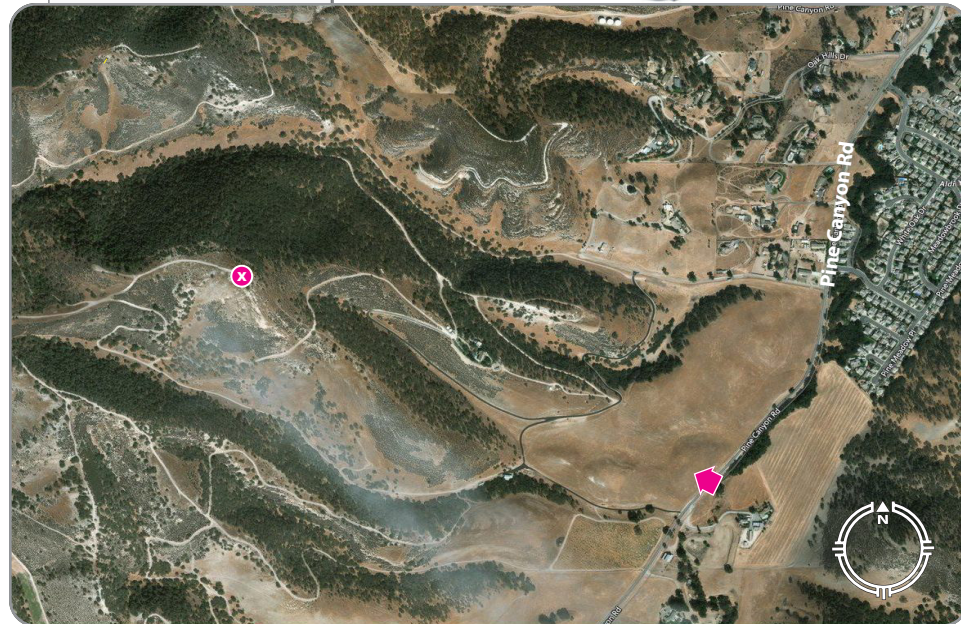
BLUE WATER DESIGN

bluewater-design.net
 michelle@bluewater-design.net
 p 425.615.0944

Photo simulation accuracy is based on information provided to Blue Water Design by the applicant.

LOCATION

Microsoft® Virtual Earth™



View from the Southeast looking Northwest

EXISTING



PROPOSED



Completed May 09, 2018

CCL04830
Cuervo Holdings

51500 Pine Canyon
 King City, CA 93930

VIEW 3

APPLICANT

AT&T Mobility
 5001 Executive Parkway
 San Ramon, CA 94583

CONTACT

TSJ Consulting Inc.
 Tom Johnson
 27130 Paseo Espada
 Suite #A-1426
 San Juan Capistrano, CA 92675
 p 925.785.3727



BLUE WATER DESIGN

bluewater-design.net
 michelle@bluewater-design.net
 p 425.615.0944

Photo simulation accuracy is based on information provided to Blue Water Design by the applicant.

This page intentionally left blank