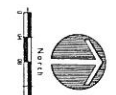


- LAYOUT LEGEND**
- | SYMBOL                           | DESCRIPTION  |
|----------------------------------|--|
| (Symbol: Dashed line)            | 1. ACCESS ROUTES AND STAGING AREAS ARE TO BE SITUATED AS SHOWN |
| (Symbol: Solid line)             | 2. EXISTING PROPERTY LINE                                      |
| (Symbol: Dotted line)            | 3. EXISTING UTILITY LOCATIONS                                  |
| (Symbol: Solid line with dots)   | 4. EXISTING CONSTRUCTION MARKS                                 |
| (Symbol: Solid line with dashes) | 5. EXISTING CONSTRUCTION MARKS                                 |
- LAYOUT NOTES**
1. THE CONTRACTOR SHALL OBTAIN ALL NECESSARY UTILITIES INFORMATION AND VERIFY THE LOCATION AND DEPTH OF ALL UTILITIES PRIOR TO CONSTRUCTION.
  2. THE CONTRACTOR SHALL MAINTAIN ALL EXISTING UTILITIES UNLESS OTHERWISE SPECIFIED.
  3. THE CONTRACTOR SHALL MAINTAIN ALL EXISTING CONSTRUCTION MARKS UNLESS OTHERWISE SPECIFIED.
  4. THE CONTRACTOR SHALL MAINTAIN ALL EXISTING CONSTRUCTION MARKS UNLESS OTHERWISE SPECIFIED.
  5. THE CONTRACTOR SHALL MAINTAIN ALL EXISTING CONSTRUCTION MARKS UNLESS OTHERWISE SPECIFIED.

- SITE SCHEDULE / MATERIALS AND FINISHES SCHEDULE**
- 1.0 SITE**
- 1.01 EXISTING CONCRETE FINISH TO REMAIN, PROTECT IN PLACE
  - 1.02 EXISTING CONCRETE FINISH TO REMAIN, PROTECT IN PLACE, REPAIR AS NEEDED
  - 1.03 EXISTING CONCRETE FINISH TO REMAIN, PROTECT IN PLACE
  - 1.04 EXISTING CONCRETE FINISH TO REMAIN, PROTECT IN PLACE
  - 1.05 EXISTING CONCRETE FINISH TO REMAIN, PROTECT IN PLACE
  - 1.06 EXISTING CONCRETE FINISH TO REMAIN, PROTECT IN PLACE
  - 1.07 EXISTING CONCRETE FINISH TO REMAIN, PROTECT IN PLACE
  - 1.08 EXISTING CONCRETE FINISH TO REMAIN, PROTECT IN PLACE
  - 1.09 EXISTING CONCRETE FINISH TO REMAIN, PROTECT IN PLACE
  - 1.10 EXISTING CONCRETE FINISH TO REMAIN, PROTECT IN PLACE
- 2.0 EXTERIOR FINISHES**
- 2.01 CONCRETE FINISH TO REMAIN, PROTECT IN PLACE
  - 2.02 CONCRETE FINISH TO REMAIN, PROTECT IN PLACE
  - 2.03 CONCRETE FINISH TO REMAIN, PROTECT IN PLACE
  - 2.04 CONCRETE FINISH TO REMAIN, PROTECT IN PLACE
  - 2.05 CONCRETE FINISH TO REMAIN, PROTECT IN PLACE
  - 2.06 CONCRETE FINISH TO REMAIN, PROTECT IN PLACE
  - 2.07 CONCRETE FINISH TO REMAIN, PROTECT IN PLACE
  - 2.08 CONCRETE FINISH TO REMAIN, PROTECT IN PLACE
  - 2.09 CONCRETE FINISH TO REMAIN, PROTECT IN PLACE
  - 2.10 CONCRETE FINISH TO REMAIN, PROTECT IN PLACE

- 3.0 INTERIOR FINISHES**
- 3.01 CONCRETE FINISH TO REMAIN, PROTECT IN PLACE
  - 3.02 CONCRETE FINISH TO REMAIN, PROTECT IN PLACE
  - 3.03 CONCRETE FINISH TO REMAIN, PROTECT IN PLACE
  - 3.04 CONCRETE FINISH TO REMAIN, PROTECT IN PLACE
  - 3.05 CONCRETE FINISH TO REMAIN, PROTECT IN PLACE
  - 3.06 CONCRETE FINISH TO REMAIN, PROTECT IN PLACE
  - 3.07 CONCRETE FINISH TO REMAIN, PROTECT IN PLACE
  - 3.08 CONCRETE FINISH TO REMAIN, PROTECT IN PLACE
  - 3.09 CONCRETE FINISH TO REMAIN, PROTECT IN PLACE
  - 3.10 CONCRETE FINISH TO REMAIN, PROTECT IN PLACE
- 4.0 SITE UTILITIES**
- 4.01 EXISTING UTILITIES TO REMAIN
  - 4.02 EXISTING UTILITIES TO REMAIN
  - 4.03 EXISTING UTILITIES TO REMAIN
  - 4.04 EXISTING UTILITIES TO REMAIN
  - 4.05 EXISTING UTILITIES TO REMAIN
  - 4.06 EXISTING UTILITIES TO REMAIN
  - 4.07 EXISTING UTILITIES TO REMAIN
  - 4.08 EXISTING UTILITIES TO REMAIN
  - 4.09 EXISTING UTILITIES TO REMAIN
  - 4.10 EXISTING UTILITIES TO REMAIN
- 5.0 MISCELLANEOUS**
- 5.01 EXISTING UTILITIES TO REMAIN
  - 5.02 EXISTING UTILITIES TO REMAIN
  - 5.03 EXISTING UTILITIES TO REMAIN
  - 5.04 EXISTING UTILITIES TO REMAIN
  - 5.05 EXISTING UTILITIES TO REMAIN
  - 5.06 EXISTING UTILITIES TO REMAIN
  - 5.07 EXISTING UTILITIES TO REMAIN
  - 5.08 EXISTING UTILITIES TO REMAIN
  - 5.09 EXISTING UTILITIES TO REMAIN
  - 5.10 EXISTING UTILITIES TO REMAIN



SCALE: 1/8" = 1'-0"

DATE: 1-10

PROJECT: MONTEREY COUNTY EAST & WEST WINGS RENOVATION

**PROJECT INFORMATION**

PROJECT NO: 150022-00

PROJECT DATE: 01/10/18

DRAWN BY: JAC

CHECKED BY: JAC

DATE: 01/10/18

SCALE: 1/8" = 1'-0"

PROJECT: MONTEREY COUNTY EAST & WEST WINGS RENOVATION

**CLIENT INFORMATION**

CLIENT: MONTEREY COUNTY

ADDRESS: 240 Church Street, Salinas, CA 95001

CONTACT: (831) 435-1234

PROJECT: MONTEREY COUNTY EAST & WEST WINGS RENOVATION

**MONTEREY COUNTY EAST & WEST WINGS RENOVATION**

COUNTY OF MONTEREY  
240 Church Street  
Salinas, CA 95001

AFN NO: 002-253-027



**WRPD**

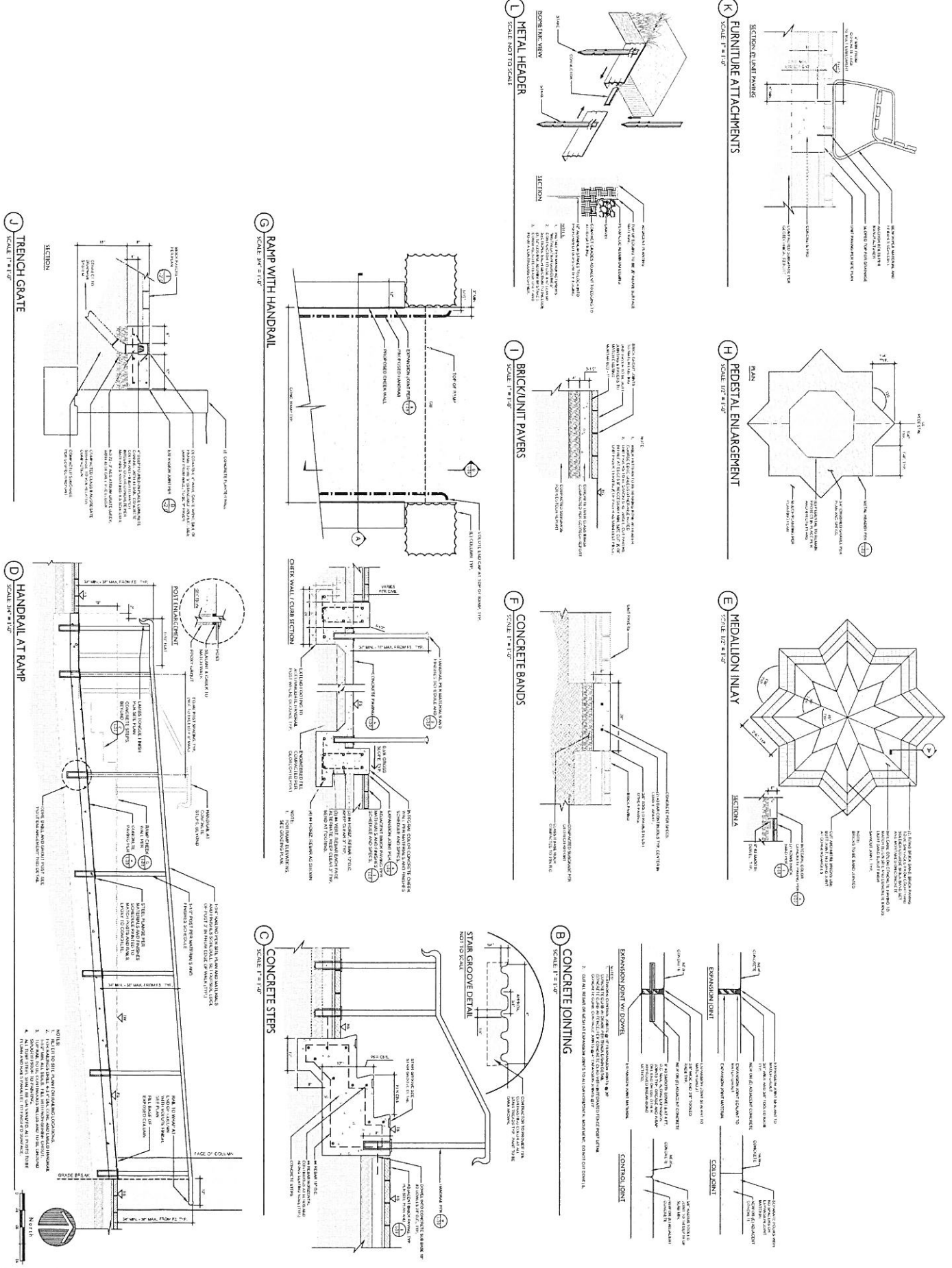
240 CENTER ROAD, SUITE 200  
MONTEREY, CALIFORNIA 95033  
PHONE: 831.484.8400  
FAX: 831.484.8300  
WWW.WRPD.COM

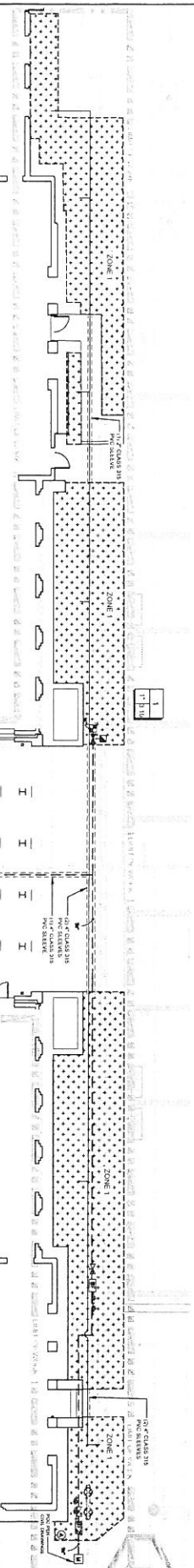
**SSA**

STRUCTURAL STEEL ANALYSIS  
1000 W. MONTEREY AVENUE  
MONTEREY, CA 95033  
PHONE: 831.484.8400  
FAX: 831.484.8300  
WWW.SSA-CALIF.COM

50

NO.	DATE	REVISION
1	05/20/22	ISSUE FOR PERMIT
2	05/20/22	ISSUE FOR PERMIT
3	05/20/22	ISSUE FOR PERMIT
4	05/20/22	ISSUE FOR PERMIT
5	05/20/22	ISSUE FOR PERMIT
6	05/20/22	ISSUE FOR PERMIT
7	05/20/22	ISSUE FOR PERMIT
8	05/20/22	ISSUE FOR PERMIT
9	05/20/22	ISSUE FOR PERMIT
10	05/20/22	ISSUE FOR PERMIT



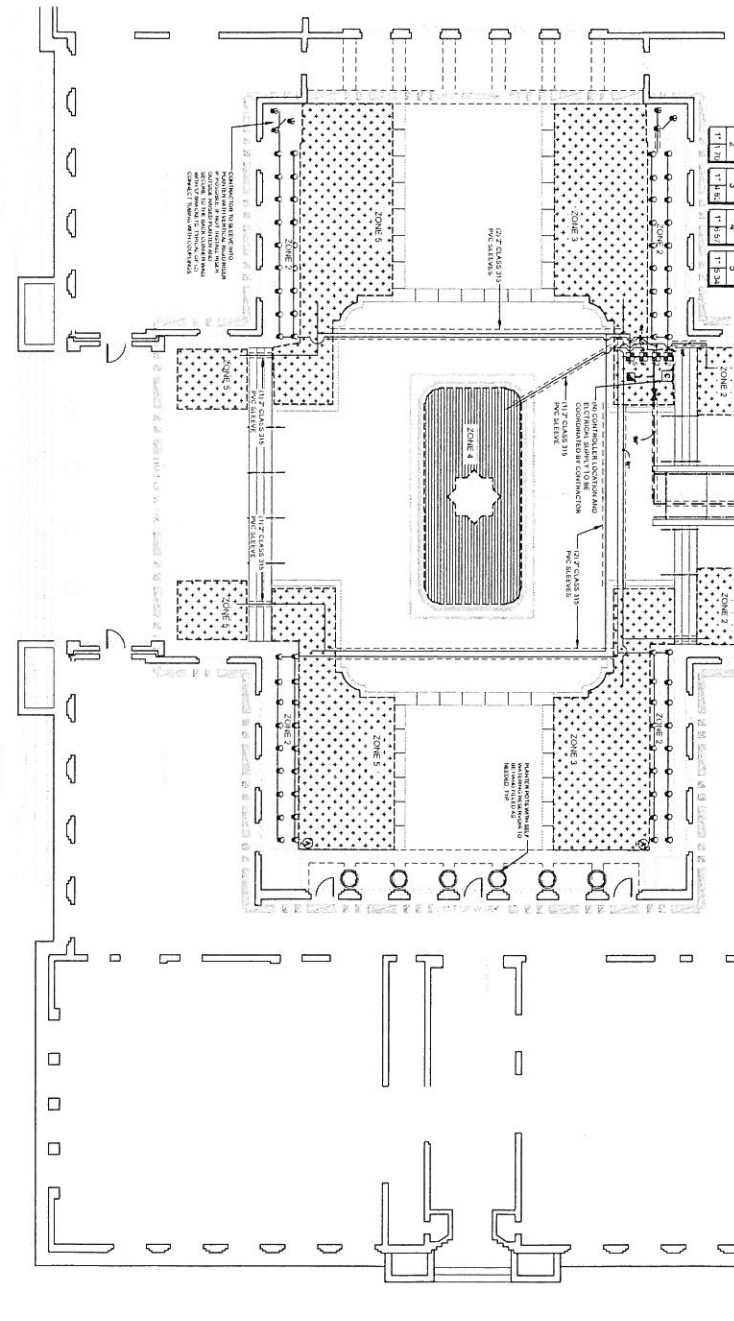


**IRRIGATION SCHEDULE**

SYMBOL	DESCRIPTION	SIZE	DEPTH
1	1/2" CLASS 315 PVC SCHEDULE 40	1/2"	1'-0"
2	1/2" CLASS 315 PVC SCHEDULE 40	1/2"	1'-0"
3	1/2" CLASS 315 PVC SCHEDULE 40	1/2"	1'-0"
4	1/2" CLASS 315 PVC SCHEDULE 40	1/2"	1'-0"
5	1/2" CLASS 315 PVC SCHEDULE 40	1/2"	1'-0"
6	1/2" CLASS 315 PVC SCHEDULE 40	1/2"	1'-0"
7	1/2" CLASS 315 PVC SCHEDULE 40	1/2"	1'-0"
8	1/2" CLASS 315 PVC SCHEDULE 40	1/2"	1'-0"
9	1/2" CLASS 315 PVC SCHEDULE 40	1/2"	1'-0"
10	1/2" CLASS 315 PVC SCHEDULE 40	1/2"	1'-0"
11	1/2" CLASS 315 PVC SCHEDULE 40	1/2"	1'-0"
12	1/2" CLASS 315 PVC SCHEDULE 40	1/2"	1'-0"
13	1/2" CLASS 315 PVC SCHEDULE 40	1/2"	1'-0"
14	1/2" CLASS 315 PVC SCHEDULE 40	1/2"	1'-0"
15	1/2" CLASS 315 PVC SCHEDULE 40	1/2"	1'-0"
16	1/2" CLASS 315 PVC SCHEDULE 40	1/2"	1'-0"
17	1/2" CLASS 315 PVC SCHEDULE 40	1/2"	1'-0"
18	1/2" CLASS 315 PVC SCHEDULE 40	1/2"	1'-0"
19	1/2" CLASS 315 PVC SCHEDULE 40	1/2"	1'-0"
20	1/2" CLASS 315 PVC SCHEDULE 40	1/2"	1'-0"
21	1/2" CLASS 315 PVC SCHEDULE 40	1/2"	1'-0"
22	1/2" CLASS 315 PVC SCHEDULE 40	1/2"	1'-0"
23	1/2" CLASS 315 PVC SCHEDULE 40	1/2"	1'-0"
24	1/2" CLASS 315 PVC SCHEDULE 40	1/2"	1'-0"
25	1/2" CLASS 315 PVC SCHEDULE 40	1/2"	1'-0"
26	1/2" CLASS 315 PVC SCHEDULE 40	1/2"	1'-0"
27	1/2" CLASS 315 PVC SCHEDULE 40	1/2"	1'-0"
28	1/2" CLASS 315 PVC SCHEDULE 40	1/2"	1'-0"
29	1/2" CLASS 315 PVC SCHEDULE 40	1/2"	1'-0"
30	1/2" CLASS 315 PVC SCHEDULE 40	1/2"	1'-0"
31	1/2" CLASS 315 PVC SCHEDULE 40	1/2"	1'-0"
32	1/2" CLASS 315 PVC SCHEDULE 40	1/2"	1'-0"
33	1/2" CLASS 315 PVC SCHEDULE 40	1/2"	1'-0"
34	1/2" CLASS 315 PVC SCHEDULE 40	1/2"	1'-0"
35	1/2" CLASS 315 PVC SCHEDULE 40	1/2"	1'-0"
36	1/2" CLASS 315 PVC SCHEDULE 40	1/2"	1'-0"
37	1/2" CLASS 315 PVC SCHEDULE 40	1/2"	1'-0"
38	1/2" CLASS 315 PVC SCHEDULE 40	1/2"	1'-0"
39	1/2" CLASS 315 PVC SCHEDULE 40	1/2"	1'-0"
40	1/2" CLASS 315 PVC SCHEDULE 40	1/2"	1'-0"
41	1/2" CLASS 315 PVC SCHEDULE 40	1/2"	1'-0"
42	1/2" CLASS 315 PVC SCHEDULE 40	1/2"	1'-0"
43	1/2" CLASS 315 PVC SCHEDULE 40	1/2"	1'-0"
44	1/2" CLASS 315 PVC SCHEDULE 40	1/2"	1'-0"
45	1/2" CLASS 315 PVC SCHEDULE 40	1/2"	1'-0"
46	1/2" CLASS 315 PVC SCHEDULE 40	1/2"	1'-0"
47	1/2" CLASS 315 PVC SCHEDULE 40	1/2"	1'-0"
48	1/2" CLASS 315 PVC SCHEDULE 40	1/2"	1'-0"
49	1/2" CLASS 315 PVC SCHEDULE 40	1/2"	1'-0"
50	1/2" CLASS 315 PVC SCHEDULE 40	1/2"	1'-0"

**GENERAL IRRIGATION NOTES**

1. THIS SCHEDULE IS SUBJECT TO CHANGE WITHOUT NOTICE. THE CONTRACTOR SHALL VERIFY THE SCHEDULE WITH THE ARCHITECT AND THE OWNER BEFORE BEGINNING WORK.
2. THE CONTRACTOR SHALL BE RESPONSIBLE FOR OBTAINING ALL NECESSARY PERMITS AND APPROVALS FROM THE LOCAL AGENCIES.
3. THE CONTRACTOR SHALL BE RESPONSIBLE FOR OBTAINING ALL NECESSARY PERMITS AND APPROVALS FROM THE LOCAL AGENCIES.
4. THE CONTRACTOR SHALL BE RESPONSIBLE FOR OBTAINING ALL NECESSARY PERMITS AND APPROVALS FROM THE LOCAL AGENCIES.
5. THE CONTRACTOR SHALL BE RESPONSIBLE FOR OBTAINING ALL NECESSARY PERMITS AND APPROVALS FROM THE LOCAL AGENCIES.
6. THE CONTRACTOR SHALL BE RESPONSIBLE FOR OBTAINING ALL NECESSARY PERMITS AND APPROVALS FROM THE LOCAL AGENCIES.
7. THE CONTRACTOR SHALL BE RESPONSIBLE FOR OBTAINING ALL NECESSARY PERMITS AND APPROVALS FROM THE LOCAL AGENCIES.
8. THE CONTRACTOR SHALL BE RESPONSIBLE FOR OBTAINING ALL NECESSARY PERMITS AND APPROVALS FROM THE LOCAL AGENCIES.
9. THE CONTRACTOR SHALL BE RESPONSIBLE FOR OBTAINING ALL NECESSARY PERMITS AND APPROVALS FROM THE LOCAL AGENCIES.
10. THE CONTRACTOR SHALL BE RESPONSIBLE FOR OBTAINING ALL NECESSARY PERMITS AND APPROVALS FROM THE LOCAL AGENCIES.



**WEST ALISAL STREET**

**CHURCH STREET**

SCALE: 1" = 30'

SHEET NAME: IRRIGATION PLAN  
 SHEET NO: L-3.0  
 DATE: 1/15/2010

PROJECT NO: 150022.00  
 PROJECT NAME: MONTEREY COUNTY EAST & WEST WINGS RENOVATION  
 PROJECT DATE: 1/15/2010  
 PROJECT LOCATION: 240 Church Street, Salinas, CA 95001

COUNTY OF MONTEREY  
 240 Church Street  
 Salinas, CA 95001

APN NO: 002-253-027



**SSA**  
 SALINAS SURVEYING & SITE ANALYSIS  
 1000 N. G Street, Salinas, CA 95070  
 Phone: (831) 844-8822  
 Fax: (831) 844-8820  
 WWW.SSASURVEYING.COM

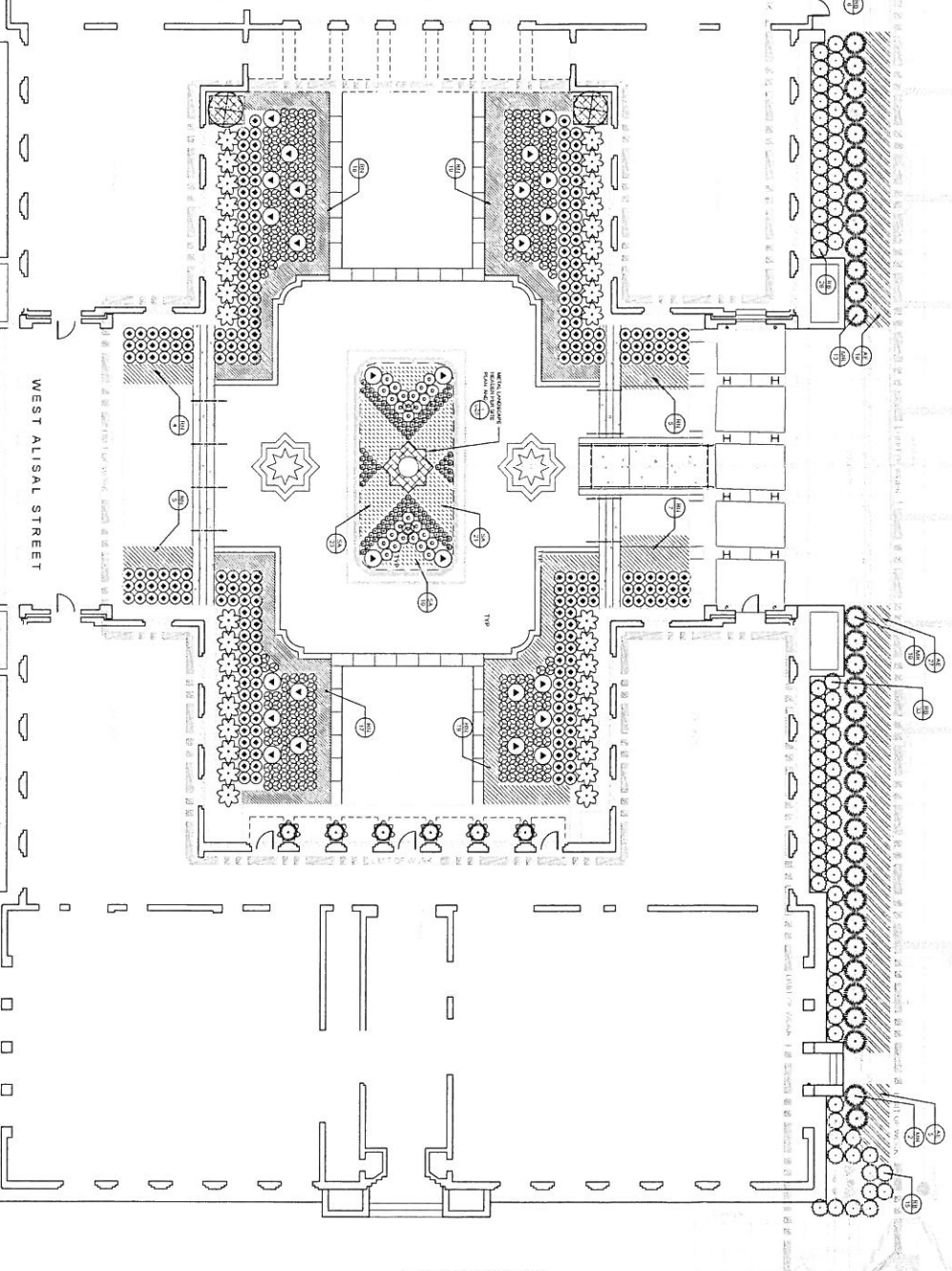
**WRPD**  
 WEST RIVERSIDE PLANNING & DESIGN  
 1000 N. G Street, Salinas, CA 95070  
 Phone: (831) 844-8822  
 Fax: (831) 844-8820  
 WWW.WRPDDESIGN.COM

### PLANT SCHEDULE

SYMBOL	CODE	DESCRIPTION	SIZE	QUANTITY
⊕	M4	PROSTRATE DOGWOOD (LARGE PLANT)	15 GAL	2
⊕	M5	PROSTRATE DOGWOOD (SMALL PLANT)	7.5 GAL	2
⊕	M6	PROSTRATE DOGWOOD (MEDIUM PLANT)	15 GAL	2
⊕	M7	PROSTRATE DOGWOOD (SMALL PLANT)	7.5 GAL	2
⊕	M8	PROSTRATE DOGWOOD (MEDIUM PLANT)	15 GAL	2
⊕	M9	PROSTRATE DOGWOOD (SMALL PLANT)	7.5 GAL	2
⊕	M10	PROSTRATE DOGWOOD (MEDIUM PLANT)	15 GAL	2
⊕	M11	PROSTRATE DOGWOOD (SMALL PLANT)	7.5 GAL	2
⊕	M12	PROSTRATE DOGWOOD (MEDIUM PLANT)	15 GAL	2
⊕	M13	PROSTRATE DOGWOOD (SMALL PLANT)	7.5 GAL	2
⊕	M14	PROSTRATE DOGWOOD (MEDIUM PLANT)	15 GAL	2
⊕	M15	PROSTRATE DOGWOOD (SMALL PLANT)	7.5 GAL	2
⊕	M16	PROSTRATE DOGWOOD (MEDIUM PLANT)	15 GAL	2
⊕	M17	PROSTRATE DOGWOOD (SMALL PLANT)	7.5 GAL	2
⊕	M18	PROSTRATE DOGWOOD (MEDIUM PLANT)	15 GAL	2
⊕	M19	PROSTRATE DOGWOOD (SMALL PLANT)	7.5 GAL	2
⊕	M20	PROSTRATE DOGWOOD (MEDIUM PLANT)	15 GAL	2
⊕	M21	PROSTRATE DOGWOOD (SMALL PLANT)	7.5 GAL	2
⊕	M22	PROSTRATE DOGWOOD (MEDIUM PLANT)	15 GAL	2
⊕	M23	PROSTRATE DOGWOOD (SMALL PLANT)	7.5 GAL	2
⊕	M24	PROSTRATE DOGWOOD (MEDIUM PLANT)	15 GAL	2
⊕	M25	PROSTRATE DOGWOOD (SMALL PLANT)	7.5 GAL	2
⊕	M26	PROSTRATE DOGWOOD (MEDIUM PLANT)	15 GAL	2
⊕	M27	PROSTRATE DOGWOOD (SMALL PLANT)	7.5 GAL	2
⊕	M28	PROSTRATE DOGWOOD (MEDIUM PLANT)	15 GAL	2
⊕	M29	PROSTRATE DOGWOOD (SMALL PLANT)	7.5 GAL	2
⊕	M30	PROSTRATE DOGWOOD (MEDIUM PLANT)	15 GAL	2
⊕	M31	PROSTRATE DOGWOOD (SMALL PLANT)	7.5 GAL	2
⊕	M32	PROSTRATE DOGWOOD (MEDIUM PLANT)	15 GAL	2
⊕	M33	PROSTRATE DOGWOOD (SMALL PLANT)	7.5 GAL	2
⊕	M34	PROSTRATE DOGWOOD (MEDIUM PLANT)	15 GAL	2
⊕	M35	PROSTRATE DOGWOOD (SMALL PLANT)	7.5 GAL	2
⊕	M36	PROSTRATE DOGWOOD (MEDIUM PLANT)	15 GAL	2
⊕	M37	PROSTRATE DOGWOOD (SMALL PLANT)	7.5 GAL	2
⊕	M38	PROSTRATE DOGWOOD (MEDIUM PLANT)	15 GAL	2
⊕	M39	PROSTRATE DOGWOOD (SMALL PLANT)	7.5 GAL	2
⊕	M40	PROSTRATE DOGWOOD (MEDIUM PLANT)	15 GAL	2
⊕	M41	PROSTRATE DOGWOOD (SMALL PLANT)	7.5 GAL	2
⊕	M42	PROSTRATE DOGWOOD (MEDIUM PLANT)	15 GAL	2
⊕	M43	PROSTRATE DOGWOOD (SMALL PLANT)	7.5 GAL	2
⊕	M44	PROSTRATE DOGWOOD (MEDIUM PLANT)	15 GAL	2
⊕	M45	PROSTRATE DOGWOOD (SMALL PLANT)	7.5 GAL	2
⊕	M46	PROSTRATE DOGWOOD (MEDIUM PLANT)	15 GAL	2
⊕	M47	PROSTRATE DOGWOOD (SMALL PLANT)	7.5 GAL	2
⊕	M48	PROSTRATE DOGWOOD (MEDIUM PLANT)	15 GAL	2
⊕	M49	PROSTRATE DOGWOOD (SMALL PLANT)	7.5 GAL	2
⊕	M50	PROSTRATE DOGWOOD (MEDIUM PLANT)	15 GAL	2

### PLANTING NOTES

1. ALL PLANTING SHALL BE DONE IN ACCORDANCE WITH THE MONTEREY COUNTY PLANTING SPECIFICATIONS AND THE MONTEREY COUNTY PLANTING SCHEDULE.
2. THE CONTRACTOR SHALL BE RESPONSIBLE FOR OBTAINING ALL NECESSARY PERMITS AND APPROVALS FROM THE APPROPRIATE AGENCIES.
3. THE CONTRACTOR SHALL BE RESPONSIBLE FOR OBTAINING ALL NECESSARY PERMITS AND APPROVALS FROM THE APPROPRIATE AGENCIES.
4. THE CONTRACTOR SHALL BE RESPONSIBLE FOR OBTAINING ALL NECESSARY PERMITS AND APPROVALS FROM THE APPROPRIATE AGENCIES.
5. THE CONTRACTOR SHALL BE RESPONSIBLE FOR OBTAINING ALL NECESSARY PERMITS AND APPROVALS FROM THE APPROPRIATE AGENCIES.
6. THE CONTRACTOR SHALL BE RESPONSIBLE FOR OBTAINING ALL NECESSARY PERMITS AND APPROVALS FROM THE APPROPRIATE AGENCIES.
7. THE CONTRACTOR SHALL BE RESPONSIBLE FOR OBTAINING ALL NECESSARY PERMITS AND APPROVALS FROM THE APPROPRIATE AGENCIES.



**MONTEREY COUNTY EAST & WEST WINGS RENOVATION**  
 COUNTY OF MONTEREY  
 240 Church Street  
 Salinas, CA 93901  
 A.P.N. NO. 032-253-027

**SSA**  
 SALINAS  
 1000 N. G STREET  
 SALINAS, CA 93901  
 (831) 435-1111  
 WWW.SSA-CALIFORNIA.COM

**WRP&D**  
 50  
 240 CHURCH STREET, SUITE 200  
 MONTEREY, CALIFORNIA 93940  
 PHONE: 831.384.8400  
 FAX: 831.384.8400  
 WWW.WRP&D.COM

