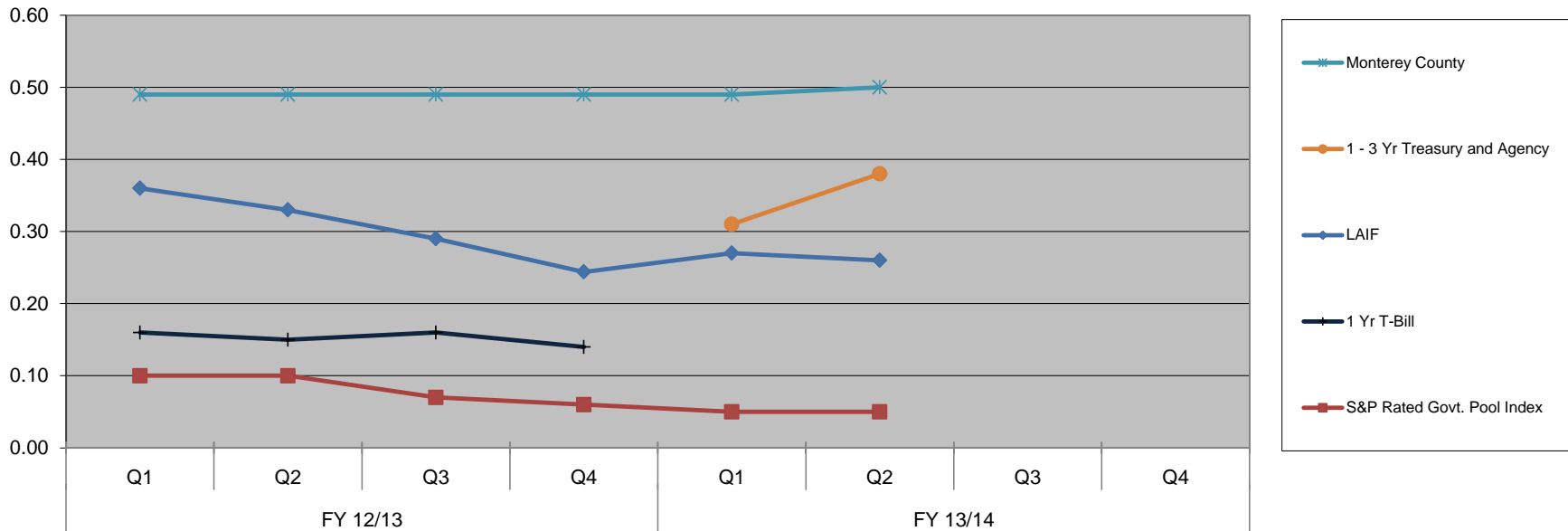


Exhibit C Monterey County Historical Yields vs. Benchmarks



Quarterly Yield	FY 12/13				FY 13/14			
	Q1	Q2	Q3	Q4	Q1	Q2	Q3	Q4
Monterey County	0.49	0.49	0.49	0.49	0.49	0.50		
1 - 3 Yr Treasury and Agency					0.31	0.38		
LAIF	0.36	0.33	0.29	0.24	0.27	0.26		
1 Yr T-Bill	0.16	0.15	0.16	0.14				
S&P Rated Govt. Pool Index	0.10	0.10	0.07	0.06	0.05	0.05		

The S&P Index yields are obtained from Bloomberg

The 1-3 Yr Treas and Agy benchmark has replaced the 1 Yr T-Bill , as it more accurately reflects the current composition and weighted average maturity of the County's portfolio.

The 1-3 Yr Treas and Agy yields are obtained from the B of A Merrill Lynch Global Bond Indices/Bloomberg