

RAINBOW CONNECTIONS

*Aligning our Collective Forces and Resources
to Support and Care for LGBTQ+ Youth*



MONTEREY
COUNTY
BEHAVIORAL
HEALTH

Avanzando Juntos
Forward Together



What is Rainbow Connections?

Rainbow Connections is a 5-year (Oct 2023 – Oct 2028) **\$7.8 million** MHSA Innovations Project led by Monterey County Behavioral Health designed to **interconnect** youth serving systems with community-based organizations to **provide human bridges** that cultivate environments of **support, inclusion and belonging** for LGBTQ+ youth across home , school and community settings.



Project Goals

Empower Youth



Empower youth to **authentically express themselves**, cultivate **leadership skills** and **provide input** on Rainbow Connections program offerings

Build Capacity



Increase capacity for adults to **understand, identify and affirmatively respond** to the mental health needs of LGBTQ+ youth

Increase Access to Affirming Care



Improve the **quality of and access to affirming, culturally responsive services** for LGBTQ+ youth

Enhance Collaboration



Increase **interagency and community collaboration** to maximize collective impact and interconnect efforts

RC Project Design

Provide human bridges of care and support across home, school and community settings



Home

Community

School



Collaborative Partners



Partners For Peace
Building strong families!



HARMONY AT HOME
Healing Trauma. Ending Abuse. Building Families.



Dragonfly Forward
ADAPT • HOPE • HEAL



GENDER HEALTH
TRAINING INSTITUTE



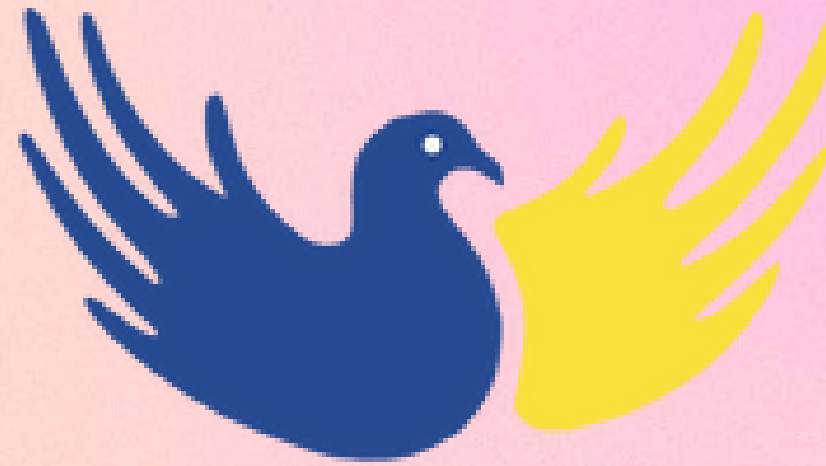
diversity center



MONTEREY COUNTY BEHAVIORAL HEALTH

Avanzando Juntos Forward Together

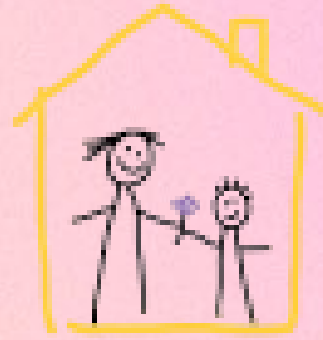
- Rainbow Connections Care Team providing specialized LGBTQ+ affirming therapy for LGBTQ+ youth and their families
- Linkage to gender affirming medical care
- Navigation of Rainbow Connections Provider Network
- School-based skills-building youth support groups



Partners For Peace

Building strong families!

- Family Support Partners to provide culturally- grounded 1:1 and group support for parents and caregivers of LGBTQ+ youth informed by Family Acceptance Project® (FAP) research
- Community outreach and engagement
- Faith leader support and allyship



HARMONY AT HOME

Healing Trauma. Ending Abuse. Building Families.

- Bullying Prevention Coaches to support school sites with addressing incidents of bias-based bullying and harassment
- Anti-bullying Club start-up and facilitation + integration with GSA clubs
- Welcoming Schools trainings for school staff
- Parent workshops



- School and community outreach and engagement
- Events for LGBTQ+ youth and young adults ages 14–24
- GSA start-up and programming support for middle and high schools
- Training in LGBTQ+ Best Practices
- Youth Empowerment Council for middle and high schools students in Monterey and San Benito counties



- Events for LGBTQ+ youth and young adults ages 14–24
- GSA start-up and programming support for elementary and secondary schools
- Inclusive Social Emotional Learning trainings and workshops for elementary and secondary schools
- Youth Empowerment Council for middle and high school students in Monterey and San Benito counties



- Virtual platform for Rainbow Connections Training Program to build capacity for providers, parents/caregivers, and community members to understand and effectively address issues impacting mental health and wellness of LGBTQ+ youth
- Array of trainings on LGBTQ+ affirming topics with Continuing Education credits available for providers
- Trainings recorded and available for digital replay

The background of the slide is a vibrant, abstract mural. It features a large, stylized face on the right side, with a rainbow arching across the center. The colors are warm and saturated, including shades of pink, orange, yellow, and purple. The overall style is artistic and expressive.

YOU WILL RISE PROJECT

- **Everyone Belongs** expressive arts workshops and community murals in school and community settings across Monterey County to raise awareness of bias-based bullying and harassment of youth
- Community outreach and engagement with interactive experiences to build rainbow connections



- Rainbow Connections Integration strategy to interconnect and align provider offerings
- Rainbow Connections Implementation Blueprint that establishes Standards of Care and can be utilized by school districts and sites across the country.
- Documentary highlighting LGBTQ+ youth needs and Rainbow Connections project impact
- Community of Care Networks



Rainbow Connections Evolution

Project Timeline June 2023–June 2028

June 2023

Monterey County
BOS approves
implementation
of Rainbow
Connections (RC)

Jan 2024

Family
Acceptance
Project
agreement
begins

July 2024

Welcoming
Schools
Training
Harmony at
Home
RC Bullying
Prevention
Coach begins

Jan 2025

The Diversity
Center
agreemet
begins

Art Makes Us
agreement
begins

April 2025

RC Training
Program
begins with
Gender Health
Training
Institute

Oct 2023

Epicenter
RC Wellness
Outreach &
Engagement
Coordinator
begins

March 2024

Partners 4
Peace
RC Family
Support
Parnter begins

Sept 2024

DragonFly
Forward
agreement
begins

March 2025

Additional RC
Bullying
Prevention
Coach and RC
FSP begin

THANK^T YOU



MONTEREY
COUNTY
BEHAVIORAL
HEALTH

Avanzando Juntos
Forward Together



Contact:

Kacey Rodenbush, LMFT

Behavioral Health Services Manager II

RodenbushKM@countyofmonterey.gov