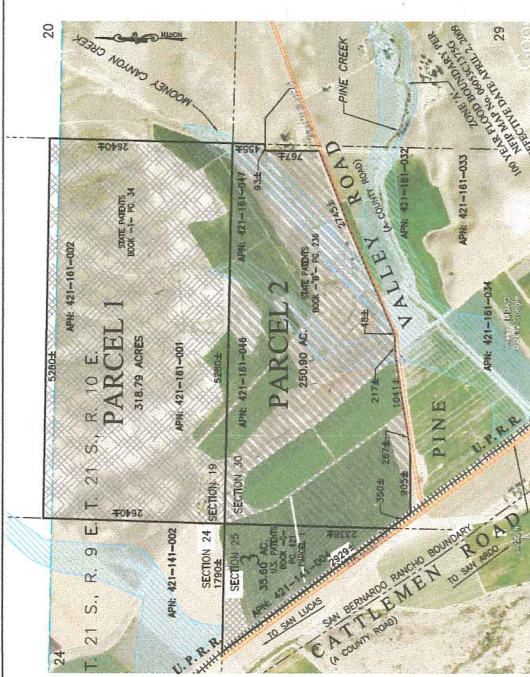
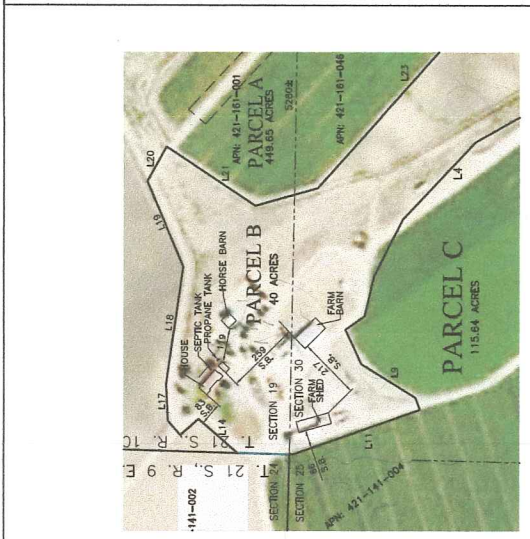
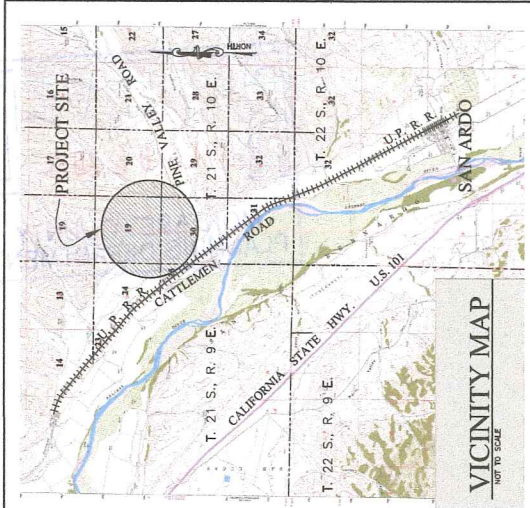


Attachment E

This page intentionally left blank.



PROJECT INFORMATION:
 THE APPLICANT HAS SUBMITTED THIS SET OF PLANS FOR 3 EXISTING LEGAL LOTS TO INCORPORATE THE ADJOINING BOUNDARIES FOR 3 EXISTING LEGAL LOTS TO INCORPORATE THE ENTIRETY OF THE PARCEL GROUND AND SEPARATE THE 49 AC. BUILDING SITE.

PROJECT ADDRESS: ROAD AND PINE VALLEY ROAD
 SAN ARDO, CA 94340

ZONING: F/10 AND R/40

PROPOSED USE: FARM LAND AND FEED LOT

THE REMOVAL: N/A

FLOOD PLAIN NOTE:
 SOME AREA OF THE MOONKEY CANYON CREEK ON THE NORTH PORTION OF THE SUBJECT PROPERTY IS NATURALLY LOCATED WITHIN THE FLOOD PLAIN. THE APPLICANT HAS OBTAINED LETTERS OF RECORD FROM FLOOD INSURANCE MAP 0603301755C, EFFECTIVE DATE APRIL 2, 2009.

NOTES:
 1. ALL DIMENSIONS (UNLESS NOTED OTHERWISE) ARE EXPRESSED IN FEET AND INCHES.
 2. LAND CONSERVATION ACQUISITION NO. 69-29 (REGULATION NO. 89-33-29) DATED FEB. 28, 1989 AND FEB. 28, 1989 AND FEB. 28, 1989 AND FEB. 28, 1989.

LEGEND:
 (---) INDICATES RECORD DATA
 (---) INDICATES A FOUND MONUMENT AS NOTED.
 (---) INDICATES A SET MONUMENT AS NOTED.

SERVICES ON SITE

EXISTING	PROPOSED
WATER SUPPLY	WELL & TANK
ELECTRIC	PIPER
SEWER	SEWER SYSTEM

DOCUMENT REFERENCES:

ASSESSORS PARCELS	LEGAL DOCUMENT
PARCEL 1 APR. 421-181-001	BOOK 1--OF STATE PATENTS-- PG. 34
PARCEL 2 APR. 421-181-002	BOOK 9--OF STATE PATENTS-- PG. 239
PARCEL 3 APR. 421-141-001	BOOK 12--OF U.S. PATENTS-- PG. 421

PLN120819
LOT LINE ADJUSTMENT
 APR. 421-181-001, APR. 421-181-002, APR. 421-181-003, APR. 421-181-047 & APR. 421-181-048
 PREPARED FOR: LONG VALLEY PARTNERS L.P.
 MR. KENNETH L. EADE
 SAN ARDO, CA 94340

REGISTERED TO:
 SALINAS VALLEY SURVEYORS, INC.
 PHILIP FEGANAN
 210 CAPITOL ST. SUITE 1615
 SALINAS, CALIFORNIA 93901
 PH. (831) 753-2734
 E-MAIL: snvalley@aol.com

SURVEYOR'S STATEMENT:
 THIS MAP WAS PREPARED BY ME OR UNDER MY SUPERVISION AT THE REQUEST OF LONG VALLEY PARTNERS L.P., IN ACCORDANCE WITH THE SURVEYORS ACT, CHAPTER 4, DIVISION 4, TITLE 27, CALIFORNIA GOVERNMENT CODE, SECTION 27200.

DATE: 09/25/2013
SHEET NO.: 1 OF 1

RECAPITULATION OF AREAS:

EXISTING	PROPOSED	TOTAL
PARCEL A = 318.79 AC.	PARCEL A = 448.65 AC.	PARCEL A = 767.44 AC.
PARCEL B = 40 AC.	PARCEL B = 40 AC.	PARCEL B = 80 AC.
PARCEL C = 115.64 AC.	PARCEL C = 115.64 AC.	PARCEL C = 231.28 AC.
TOTAL	665.39 AC.	665.39 AC.

DETAIL 2
 SCALE: 1"=200'

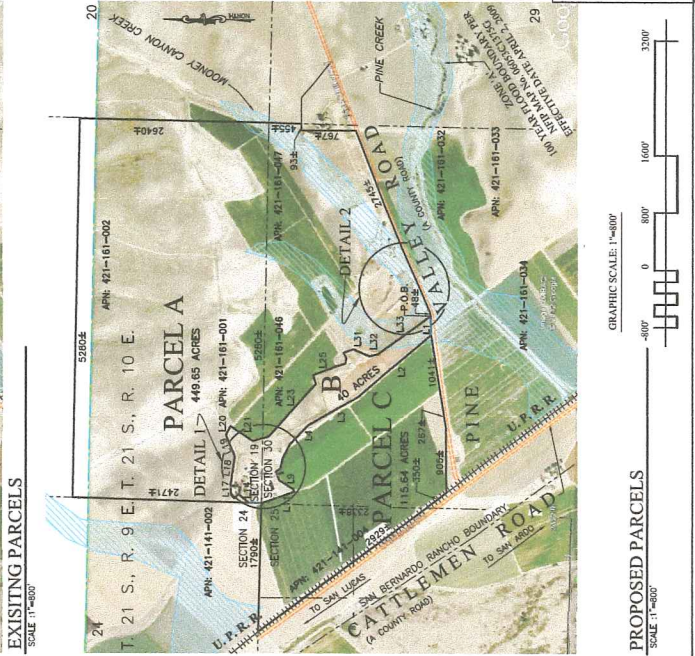
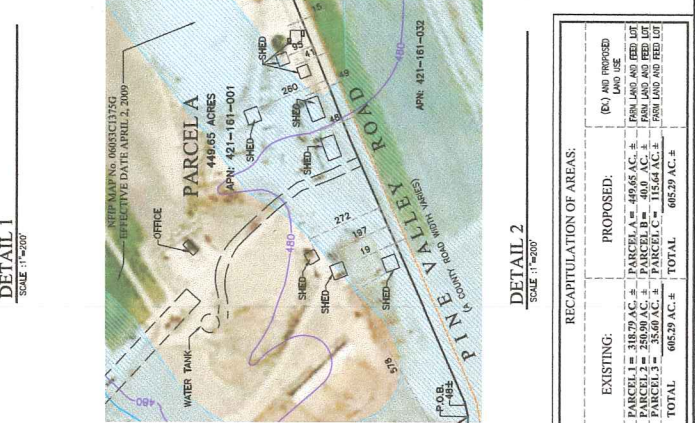
RECAPITULATION OF AREAS:

EXISTING	PROPOSED	TOTAL
PARCEL A = 318.79 AC.	PARCEL A = 448.65 AC.	PARCEL A = 767.44 AC.
PARCEL B = 40 AC.	PARCEL B = 40 AC.	PARCEL B = 80 AC.
PARCEL C = 115.64 AC.	PARCEL C = 115.64 AC.	PARCEL C = 231.28 AC.
TOTAL	665.39 AC.	665.39 AC.

PROPOSED PARCELS
 SCALE: 1"=400'

COURSE TABLE (PROPOSED) PARCEL B

LINE	BEARING	DISTANCE
L1	287.6	13.94
L2	133.64	6.02
L3	37.18	22.12
L4	110.2	6.02
L5	272.2	13.94
L6	181.2	6.02
L7	172	17.2
L8	184.2	18.2
L9	181.2	6.02
L10	127.6	6.02
L11	413.6	32.2
L12	133.64	6.02
L13	37.18	22.12
L14	110.2	6.02
L15	272.2	13.94
L16	181.2	6.02
L17	172	17.2
L18	184.2	18.2
L19	181.2	6.02
L20	127.6	6.02
L21	413.6	32.2
L22	133.64	6.02
L23	37.18	22.12
L24	110.2	6.02
L25	272.2	13.94
L26	181.2	6.02
L27	172	17.2
L28	184.2	18.2
L29	181.2	6.02
L30	127.6	6.02
L31	413.6	32.2
L32	133.64	6.02
L33	37.18	22.12
L34	110.2	6.02
L35	272.2	13.94
L36	181.2	6.02
L37	172	17.2
L38	184.2	18.2
L39	181.2	6.02
L40	127.6	6.02
L41	413.6	32.2
L42	133.64	6.02
L43	37.18	22.12
L44	110.2	6.02
L45	272.2	13.94
L46	181.2	6.02
L47	172	17.2
L48	184.2	18.2
L49	181.2	6.02
L50	127.6	6.02
L51	413.6	32.2
L52	133.64	6.02
L53	37.18	22.12
L54	110.2	6.02
L55	272.2	13.94
L56	181.2	6.02
L57	172	17.2
L58	184.2	18.2
L59	181.2	6.02
L60	127.6	6.02
L61	413.6	32.2
L62	133.64	6.02
L63	37.18	22.12
L64	110.2	6.02
L65	272.2	13.94
L66	181.2	6.02
L67	172	17.2
L68	184.2	18.2
L69	181.2	6.02
L70	127.6	6.02
L71	413.6	32.2
L72	133.64	6.02
L73	37.18	22.12
L74	110.2	6.02
L75	272.2	13.94
L76	181.2	6.02
L77	172	17.2
L78	184.2	18.2
L79	181.2	6.02
L80	127.6	6.02
L81	413.6	32.2
L82	133.64	6.02
L83	37.18	22.12
L84	110.2	6.02
L85	272.2	13.94
L86	181.2	6.02
L87	172	17.2
L88	184.2	18.2
L89	181.2	6.02
L90	127.6	6.02
L91	413.6	32.2
L92	133.64	6.02
L93	37.18	22.12
L94	110.2	6.02
L95	272.2	13.94
L96	181.2	6.02
L97	172	17.2
L98	184.2	18.2
L99	181.2	6.02
L100	127.6	6.02



PROPOSED PARCELS
 SCALE: 1"=400'

COURSE TABLE (PROPOSED) PARCEL B

LINE	BEARING	DISTANCE
L1	287.6	13.94
L2	133.64	6.02
L3	37.18	22.12
L4	110.2	6.02
L5	272.2	13.94
L6	181.2	6.02
L7	172	17.2
L8	184.2	18.2
L9	181.2	6.02
L10	127.6	6.02
L11	413.6	32.2
L12	133.64	6.02
L13	37.18	22.12
L14	110.2	6.02
L15	272.2	13.94
L16	181.2	6.02
L17	172	17.2
L18	184.2	18.2
L19	181.2	6.02
L20	127.6	6.02
L21	413.6	32.2
L22	133.64	6.02
L23	37.18	22.12
L24	110.2	6.02
L25	272.2	13.94
L26	181.2	6.02
L27	172	17.2
L28	184.2	18.2
L29	181.2	6.02
L30	127.6	6.02
L31	413.6	32.2
L32	133.64	6.02
L33	37.18	22.12
L34	110.2	6.02
L35	272.2	13.94
L36	181.2	6.02
L37	172	17.2
L38	184.2	18.2
L39	181.2	6.02
L40	127.6	6.02
L41	413.6	32.2
L42	133.64	6.02
L43	37.18	22.12
L44	110.2	6.02
L45	272.2	13.94
L46	181.2	6.02
L47	172	17.2
L48	184.2	18.2
L49	181.2	6.02
L50	127.6	6.02
L51	413.6	32.2
L52	133.64	6.02
L53	37.18	22.12
L54	110.2	6.02
L55	272.2	13.94
L56	181.2	6.02
L57	172	17.2
L58	184.2	18.2
L59	181.2	6.02
L60	127.6	6.02
L61	413.6	32.2
L62	133.64	6.02
L63	37.18	22.12
L64	110.2	6.02
L65	272.2	13.94
L66	181.2	6.02
L67	172	17.2
L68	184.2	18.2
L69	181.2	6.02
L70	127.6	6.02
L71	413.6	32.2
L72	133.64	6.02
L73	37.18	22.12
L74	110.2	6.02
L75	272.2	13.94
L76	181.2	6.02
L77	172	17.2
L78	184.2	18.2
L79	181.2	6.02
L80	127.6	6.02
L81	413.6	32.2
L82	133.64	6.02
L83	37.18	22.12
L84	110.2	6.02
L85	272.2	13.94
L86	181.2	6.02
L87	172	17.2
L88	184.2	18.2
L89	181.2	6.02
L90	127.6	6.02
L91	413.6	32.2
L92	133.64	6.02
L93	37.18	22.12
L94	110.2	6.02
L95	272.2	13.94
L96	181.2	6.02
L97	172	17.2
L98	184.2	18.2
L99	181.2	6.02
L100	127.6	6.02

This page intentionally left blank