



Monterey County Board of Supervisors

168 West Alisal Street,
1st Floor
Salinas, CA 93901
831.755.5066

Board Order

Upon motion of Supervisor Luis A. Alejo, seconded by Supervisor Mary L. Adams to:

Agreement No.: A-14528, Amendment No.: 1

Approve and authorize the Contracts/Purchasing Officer or Contracts/Purchasing Supervisor to execute the First Amendment with New Cingular Wireless PCS, LLC for the purpose to modify and/or replace wireless equipment located at 1025 Monterey Highway 68, Salinas, California (aka WeatherTech Raceway Laguna Seca) in order to complete equipment upgrades and maintain compliance with current and future federal, state or local mandated applications, including but not limited to emergency 911 communications services as outlined within Exhibit B-2 of the First Amendment.

PASSED AND ADOPTED on this 1st day of October 2019, by the following vote, to wit:

AYES: Supervisors Alejo, Phillips, and Adams

NOES: None

ABSENT: Supervisors Lopez and Parker

I, Valerie Ralph, Clerk of the Board of Supervisors of the County of Monterey, State of California, hereby certify that the foregoing is a true copy of an original order of said Board of Supervisors duly made and entered in the minutes thereof of Minute Book 82 for the meeting October 1, 2019.

Dated: October 2, 2019
File ID.: 19-0771
Agenda Item No.: 22

Valerie Ralph, Clerk of the Board of Supervisors
County of Monterey, State of California


Julian Lorenzana, Deputy

-EXHIBIT B-2

SKETCH OF THE PREMISES

(SEE INSERTED CONSTRUCTION PLANS DATED 4/20/18)

PRELIMINARY INFORMATION:
 THE INFORMATION CONTAINED IN THIS SET OF DRAWINGS IS THE PROPERTY OF PEAK SITE-CORP. IT IS TO BE USED ONLY FOR THE PROJECT AND SITE SPECIFICALLY IDENTIFIED HEREIN. ANY REUSE OR MODIFICATION OF THIS INFORMATION WITHOUT THE WRITTEN CONSENT OF PEAK SITE-CORP. IS STRICTLY PROHIBITED.

at&t
 COMMUNICATIONS

MONTEREY SALINAS HWY
 100 MONTEREY SALINAS HWY
 SALINAS, CALIF.

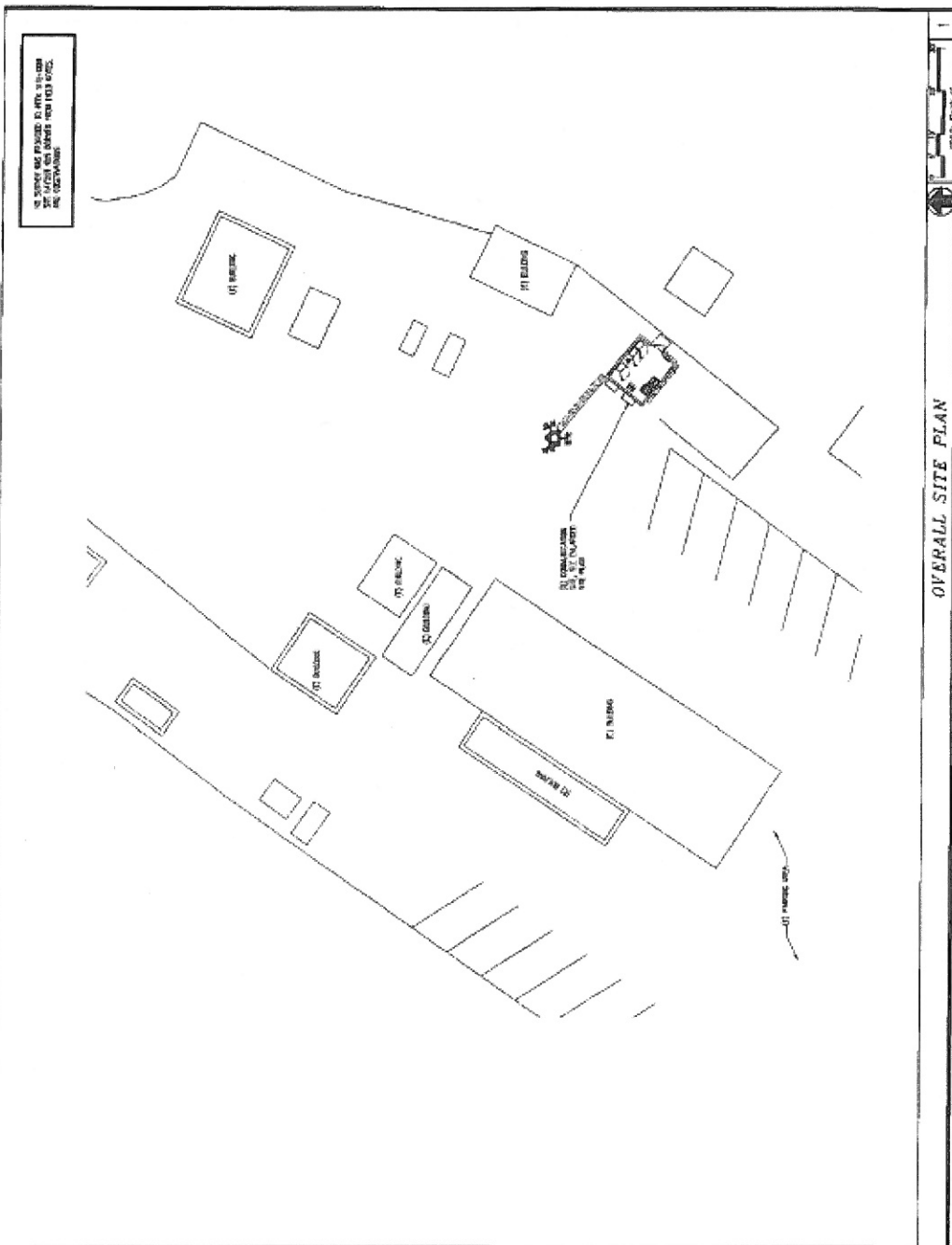
NO.	DATE	DESCRIPTION	BY
1	12-12-03	BASE DRAWING FOR P.C.	MAP
2	8-29-08	FINAL CONSTRUCTION DOCUMENT	MAP

PROPOSED IMPROVEMENTS

Peak Site-Corp.
 10000 Sycamore Ave, Suite 100
 San Jose, CA 95128
 Phone: (415) 222-6113
 E-Mail: info@peaksite.com

OVERALL SITE PLAN

A-1 0



PROPOSED ANTENNA CONFIGURATION CHART
 ALL ANTENNAS TO BE INSTALLED IN ACCORDANCE WITH THE FOLLOWING TABLE AND THE ANTENNA SPECIFICATIONS LISTED THEREIN.
 STRICTLY ENFORCEABLE



MONTEREY SALINAS HWY
 FROM MONTEREY SALINAS HWY
 TO MONTEREY SALINAS HWY

ANTENNA CONFIGURATION CHART

ANTENNA ID	ANTENNA TYPE	ANTENNA HGT (FT)	ANTENNA WIDTH (FT)	ANTENNA DEPTH (FT)	ANTENNA WEIGHT (LBS)	ANTENNA WIND LOAD (PSF)	ANTENNA WIND DIRECTION	ANTENNA WIND SPEED (MPH)
1
2
3

Peak Site-Corre
 1985 Federal Ave, Suite 101
 Redwood City, CA 94063
 Phone (415) 992-9900
 E-mail: info@peakcommunications.com



PROJECT NO. 0000000000
 SHEET NO. 0000000000
 DATE 00/00/00

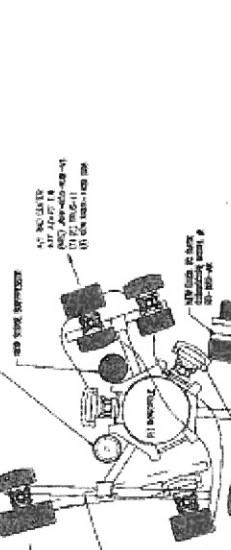
ANTENNA PLAN
 A-1.2.0

FMMA ANTENNA CONFIGURATION TABLE

ANTENNA ID	ANTENNA TYPE	ANTENNA HGT (FT)	ANTENNA WIDTH (FT)	ANTENNA DEPTH (FT)	ANTENNA WEIGHT (LBS)	ANTENNA WIND LOAD (PSF)	ANTENNA WIND DIRECTION	ANTENNA WIND SPEED (MPH)
01
02
03
04
05
06
07
08
09
10

ANTENNA CONFIGURATION CHART
 ALL ANTENNAS SHALL BE INSTALLED IN ACCORDANCE WITH THE FOLLOWING TABLE AND THE ANTENNA SPECIFICATIONS LISTED THEREIN.
 STRICTLY ENFORCEABLE

- 1. ALL ANTENNAS SHALL BE INSTALLED IN ACCORDANCE WITH THE FOLLOWING TABLE AND THE ANTENNA SPECIFICATIONS LISTED THEREIN.
- 2. ALL ANTENNAS SHALL BE INSTALLED IN ACCORDANCE WITH THE FOLLOWING TABLE AND THE ANTENNA SPECIFICATIONS LISTED THEREIN.
- 3. ALL ANTENNAS SHALL BE INSTALLED IN ACCORDANCE WITH THE FOLLOWING TABLE AND THE ANTENNA SPECIFICATIONS LISTED THEREIN.
- 4. ALL ANTENNAS SHALL BE INSTALLED IN ACCORDANCE WITH THE FOLLOWING TABLE AND THE ANTENNA SPECIFICATIONS LISTED THEREIN.
- 5. ALL ANTENNAS SHALL BE INSTALLED IN ACCORDANCE WITH THE FOLLOWING TABLE AND THE ANTENNA SPECIFICATIONS LISTED THEREIN.



PROBATION INFORMATION
THE PROBATION DEPARTMENT IN THIS CASE HAS REVIEWED THE PROSECUTION'S PROPOSALS AND HAS DETERMINED THAT THE PROSECUTION'S PROPOSALS TO BE STRICTLY PROHIBITED.

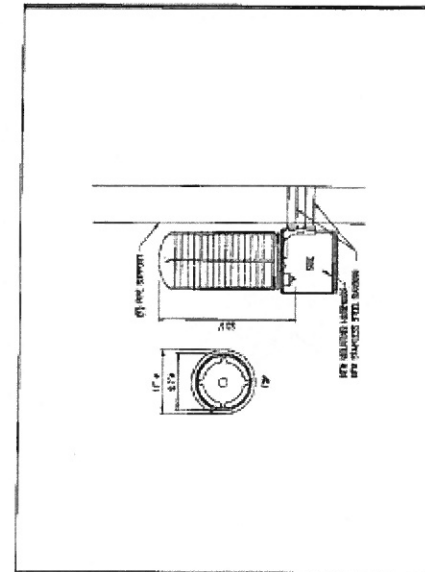


MONTEREY SALINAS HWY
10' wide base turn
10000 N. 1000

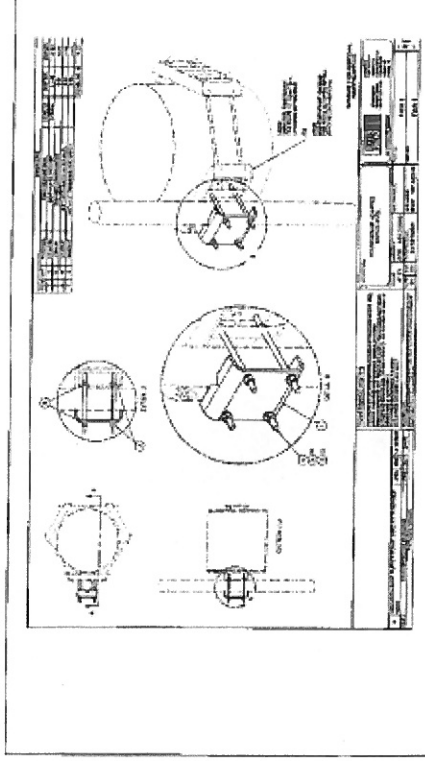
Peak Style - Conn
17880 Grant Ave. Ste 10
Albany, California 95002
Phone (916) 885-6161
E-Mail: mst@peakstyle.com

DETAILS

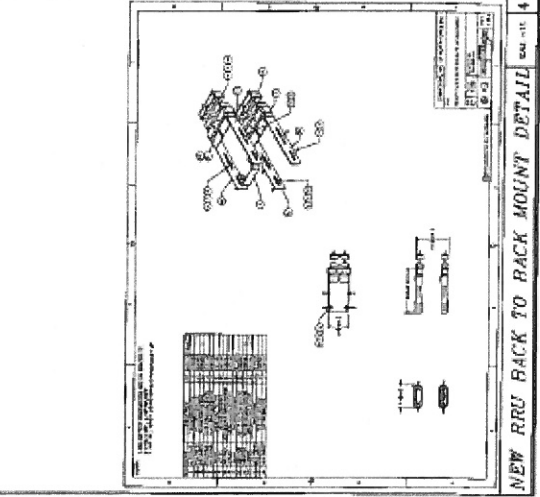
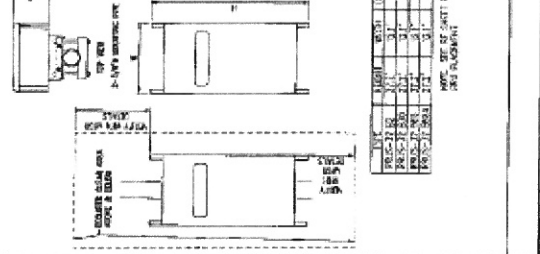
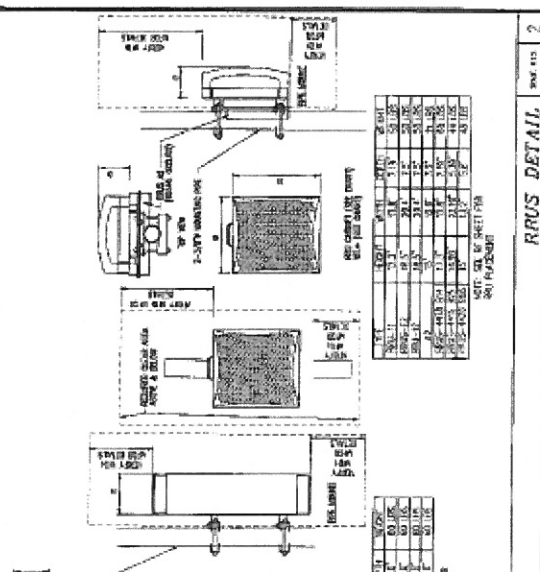
A-1.4.0



NEW SURGE SUPPRESSOR DETAIL SHEET NO. 1




NEW FLUSH MOUNT ADAPTOR DETAIL SHEET NO. 3



NEW RRU BACK TO BACK MOUNT DETAIL SHEET NO. 4

PROSPECTIVE INFORMATION
THE INFORMATION OBTAINED IN THIS SET OF DRAWINGS IS INTENDED FOR DESIGN PURPOSES ONLY. THE CONTRACTOR SHALL BE RESPONSIBLE FOR VERIFYING ALL INFORMATION IS CORRECTLY REPRESENTED.




at&t
ARCHITECTURAL
TRANSPORTATION
TELECOMMUNICATIONS

MONTEREY SALINAS HWY
STATE ROUTE 166
MONTEREY, CALIFORNIA

NO.	DESCRIPTION	DATE	BY	CHK
1	ISSUED FOR PERMIT	11/11/18	[Signature]	[Signature]
2	ISSUED FOR CONSTRUCTION	01/11/19	[Signature]	[Signature]
3	ISSUED FOR AS-BUILT	01/11/19	[Signature]	[Signature]

Peak Site - Conn.
4485 Central Ex. Blvd. Ste. 101
San Jose, CA 95131
Phone: (408) 948-4333
Fax: (408) 948-4333



DATE: 01/11/19
DRAWN BY: [Signature]
CHECKED BY: [Signature]
SCALE: AS SHOWN
SHEET NO. 2 OF 2

STRUCTURAL DETAILS

S-1 0

