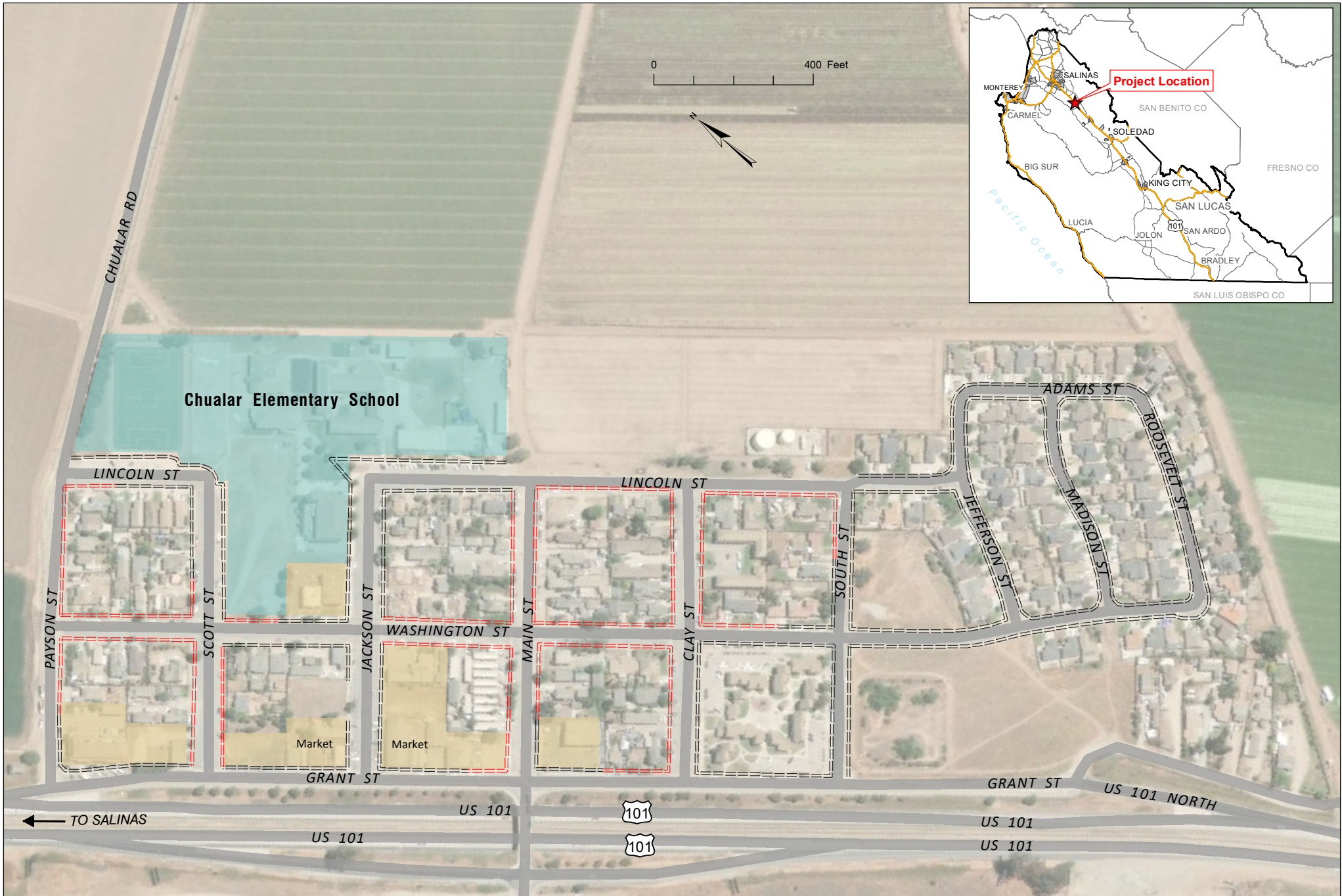


Attachment A



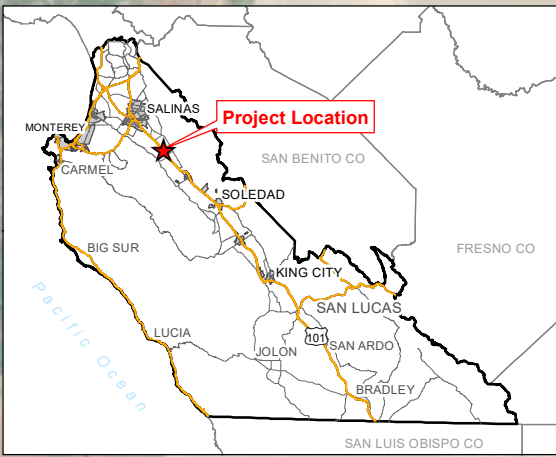
LOCATION MAP

Chualar Community & School Connections Through Active Transportation

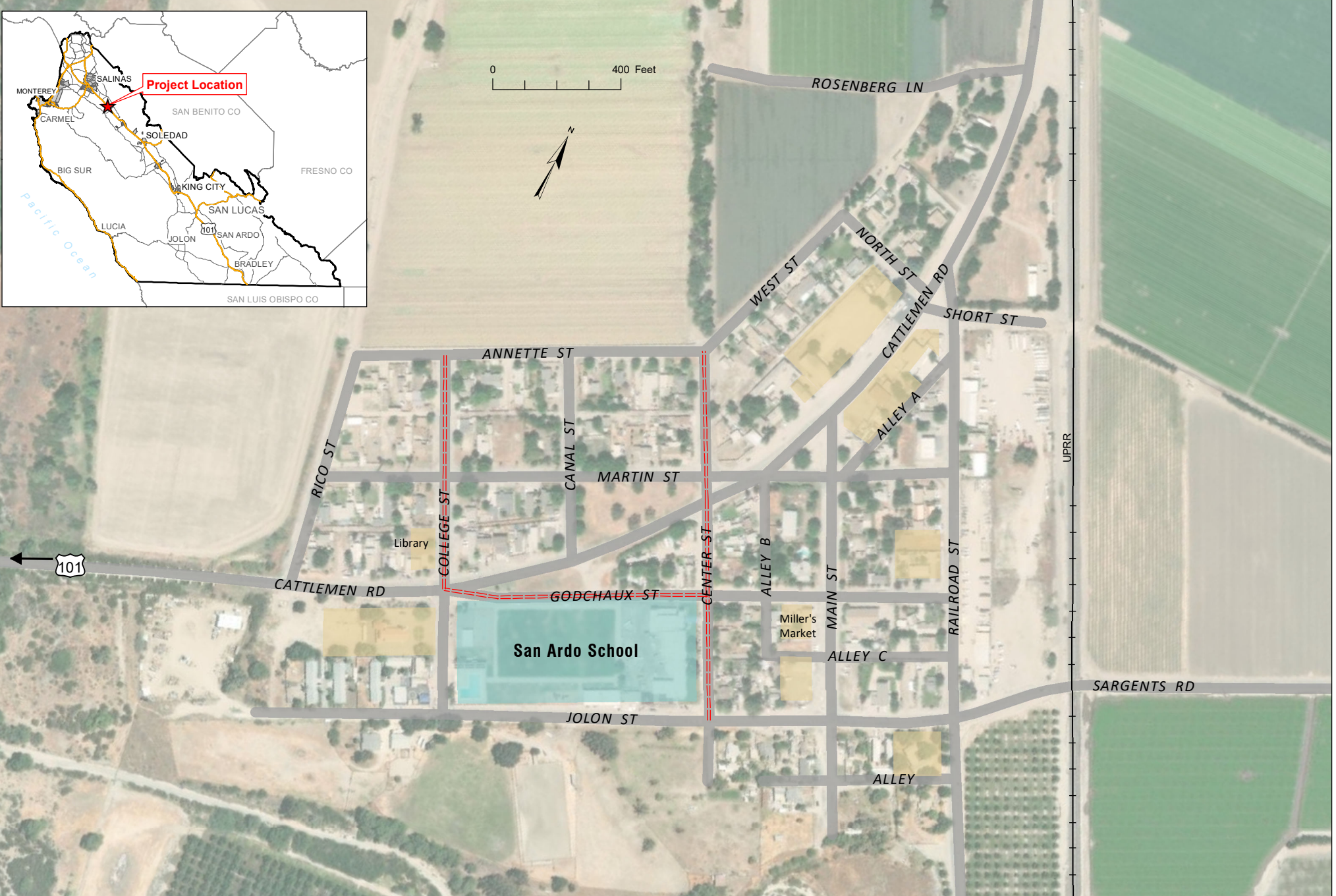
Legend

- Proposed Sidewalk
- Existing Sidewalk
- School district
- Local businesses and services





0 400 Feet



LOCATION MAP

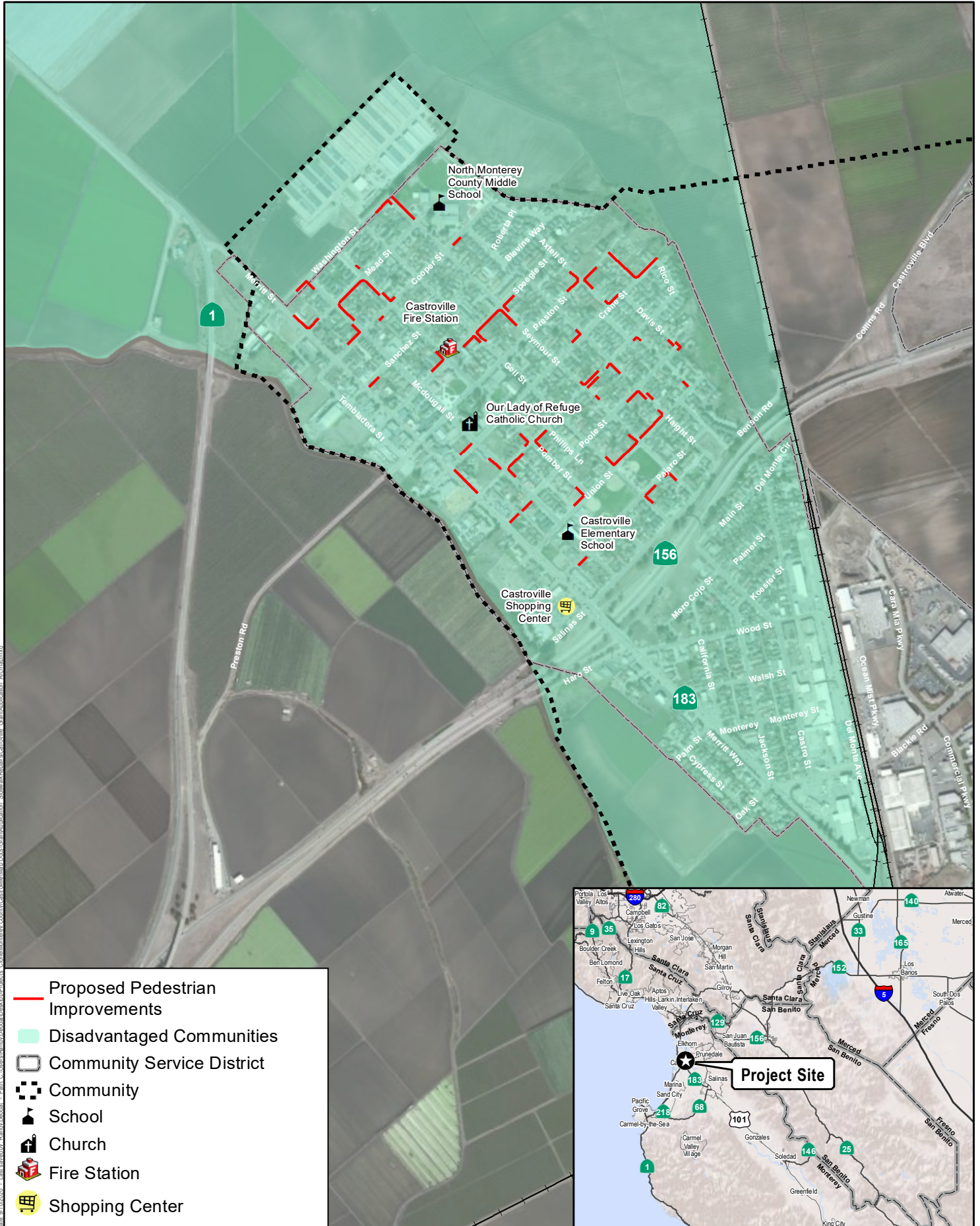
San Ardo Community & School Connections Through Active Transportation

Legend

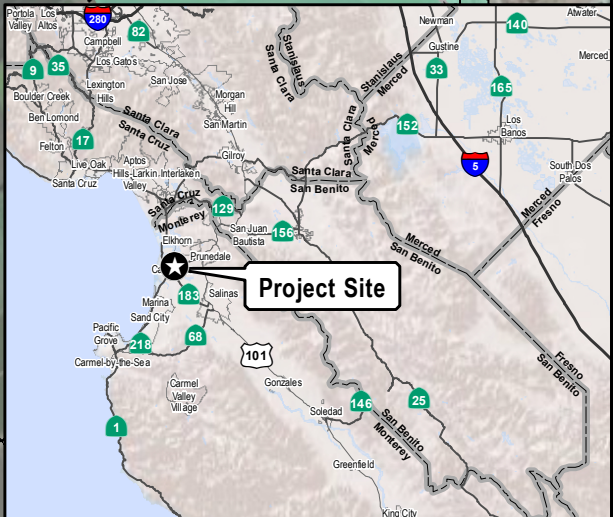
- Proposed Sidewalk
- School district

- Local businesses and services

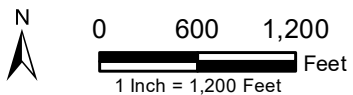




- Proposed Pedestrian Improvements
- Disadvantaged Communities
- Community Service District
- Community
- School
- Church
- Fire Station
- Shopping Center

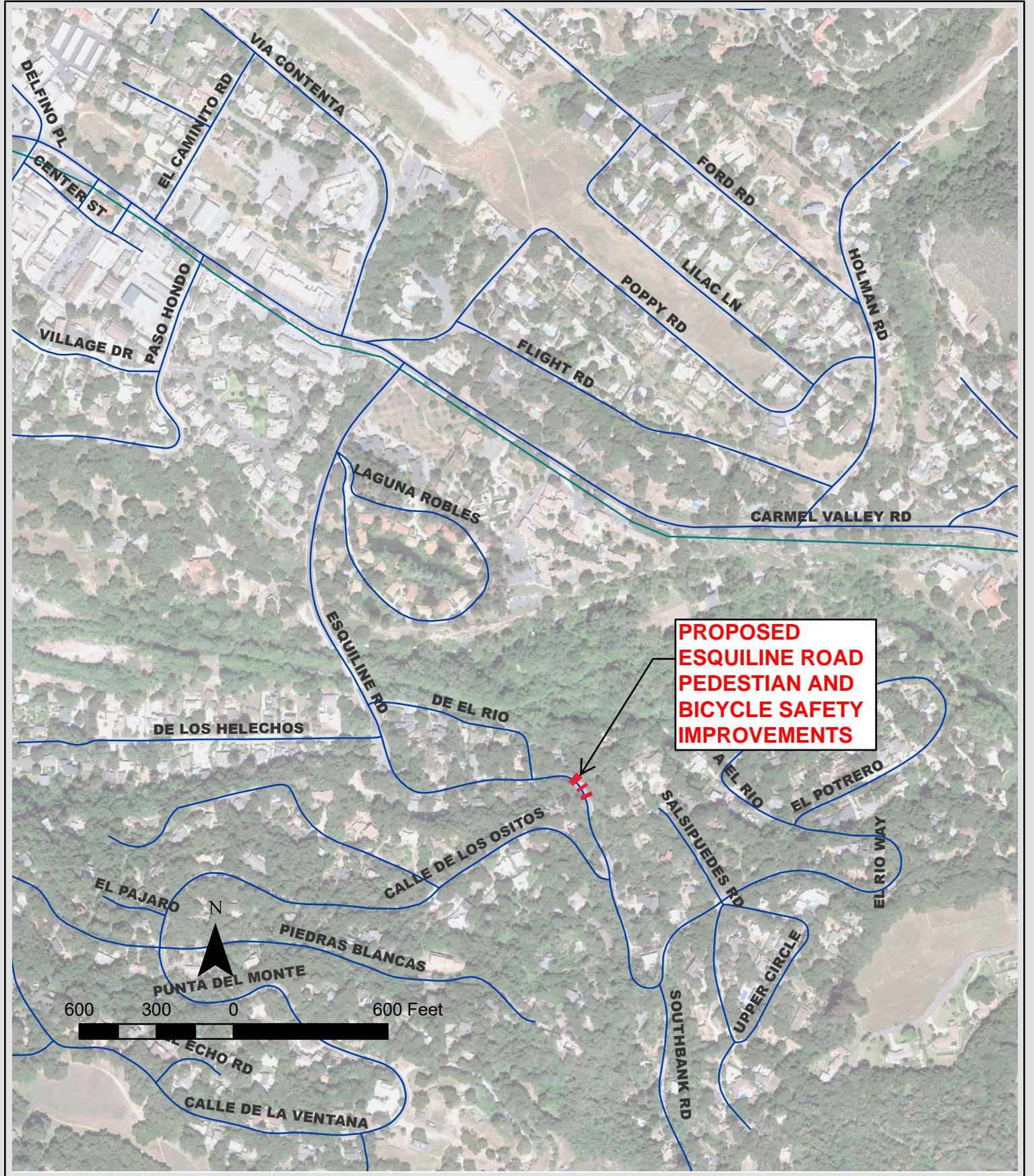


Source: Monterey County 2020.



Location Map

Castroville Community and School Connections Through Active Transportation



LOCATION MAP

ESQUILINE ROAD PEDESTIAN AND BICYCLE SAFETY IMPROVEMENT PROJECT
CARMEL VALLEY, CALIFORNIA

Legend

■■■■■■ Esquiline Road Bridge Replacement

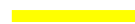




LOCATION MAP

Carmel Valley Road Safety Improvement Project

Legend



Proposed Class 2 Bicycle Lanes

