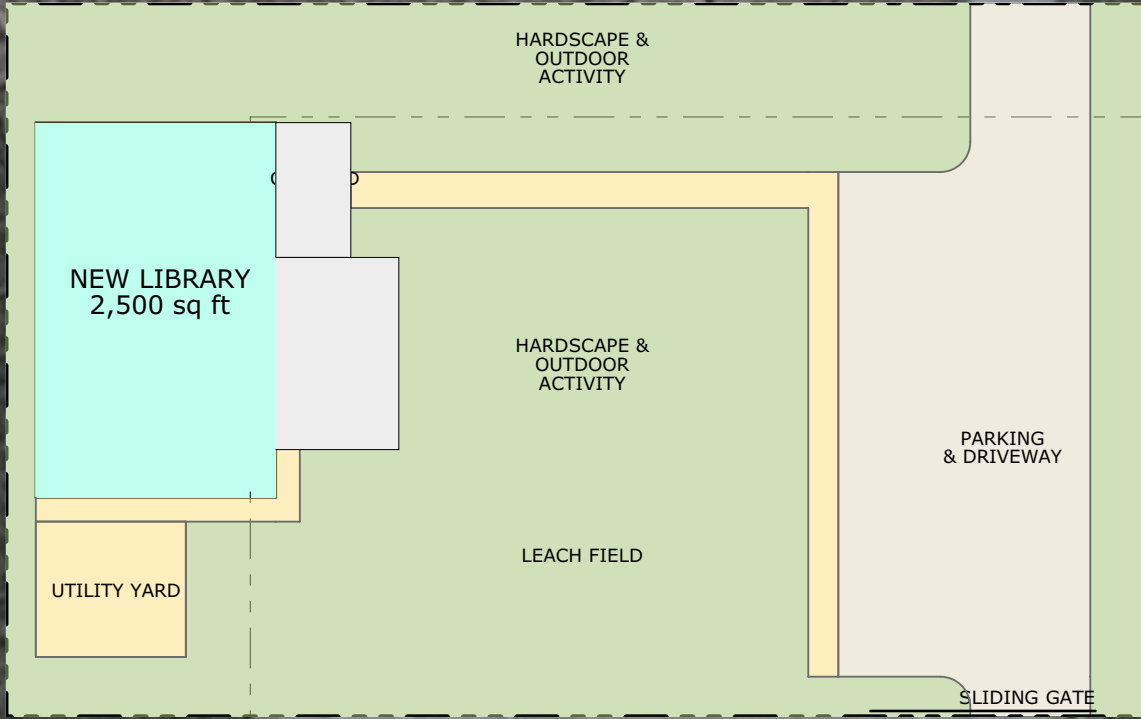


# Bradley Rd



Bradley  
Elementary School

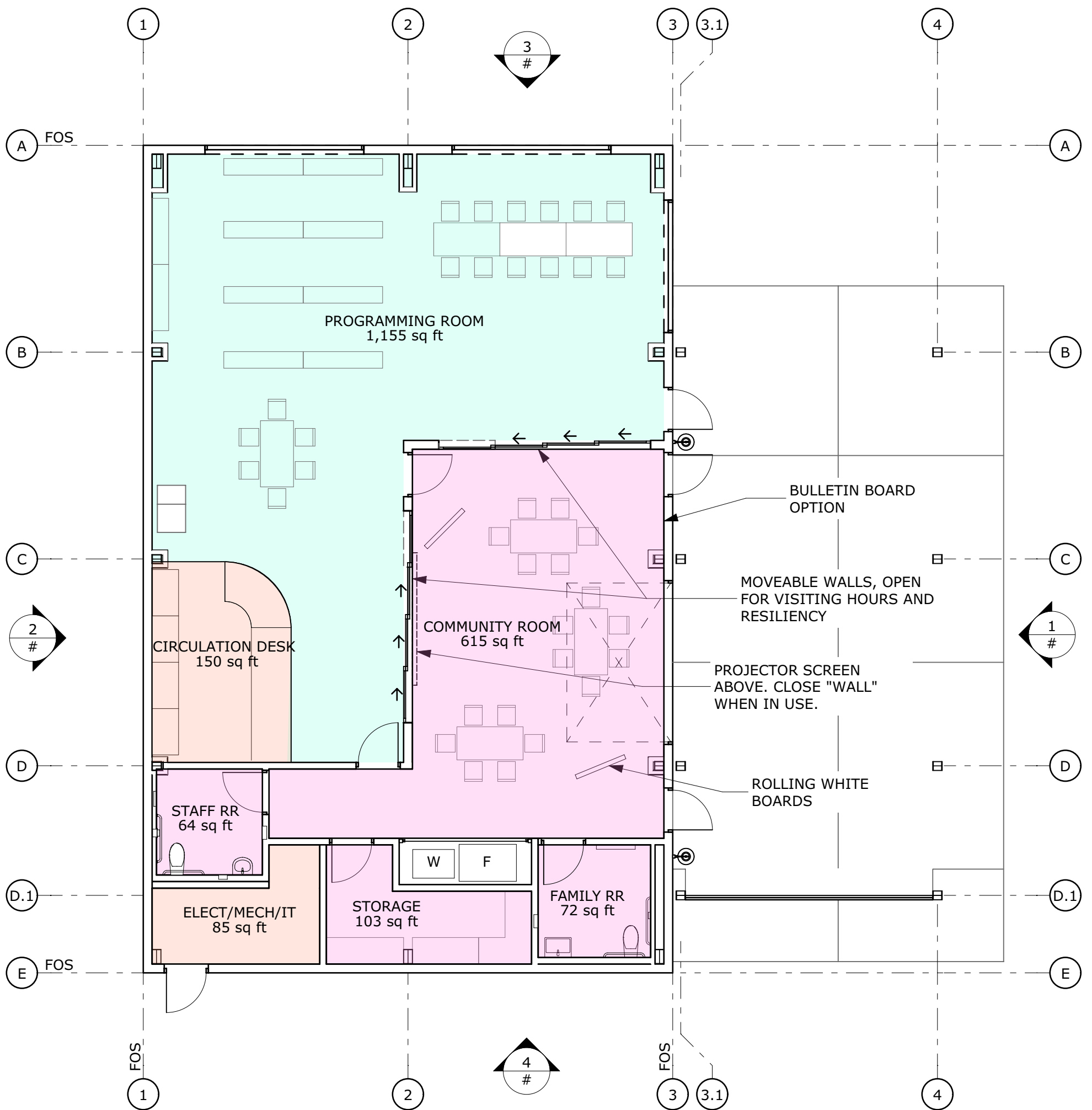


1/32" = 1' 0"  
5/15/2023

BRADLEY BRANCH LIBRARY  
SITE PLAN ALTERNATE

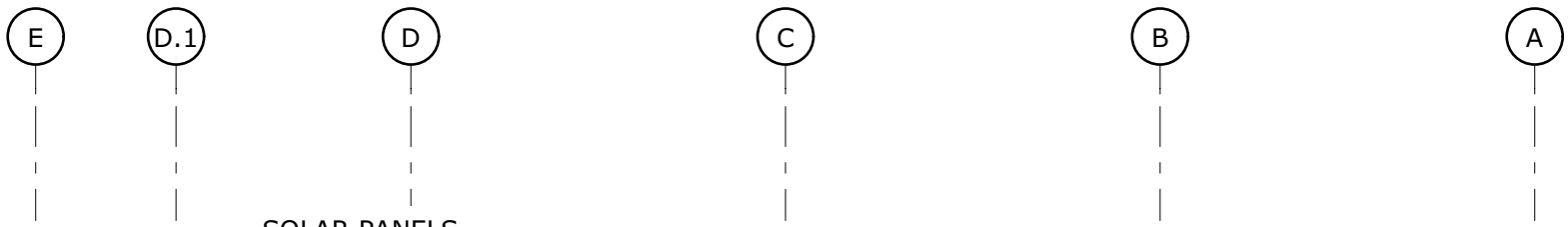
WESTON MILES  
ARCHITECTS  
• Architecture • Landscape •





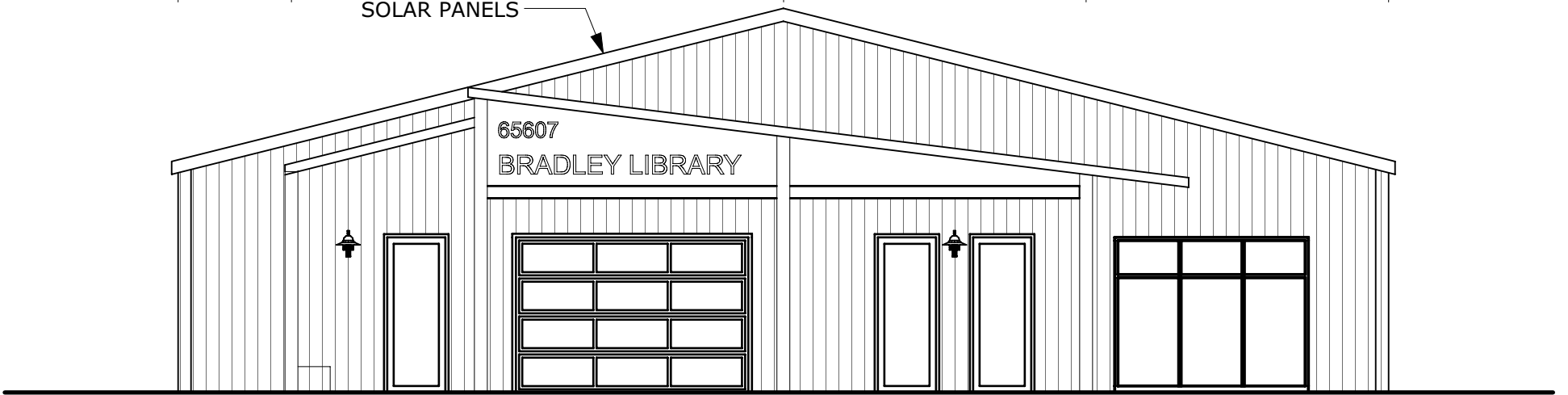
**PROPOSED IMPROVEMENTS:**

1. BY REDUCING THE AMOUNT OF HALLWAYS WE HAVE INCREASED THE SIZE OF THE ROOMS:
  - A. PROGRAMMING ROOM: +22 SQFT
  - B. COMMUNITY ROOM: +159 SQFT
  - C. STORAGE: +9 SQFT
2. COMMUNITY ROOM HAS THE OPPORTUNITY TO ACCESS TO STORAGE, THE STAFF RESTROOM IF NEEDED AS A BACKUP OPTION, AND DIRECT ACCESS TO THE FRIDGE AND WARMING DRAWER WITHOUT ACCESSING THE MAIN LIBRARY.
3. ROLLING WHITE BOARDS PROVIDE ADDITIONAL FLEXIBILITY THAT CAN BE USED ANYWHERE IN THE LIBRARY RATHER THAN TETHERED TO ONE WALL.



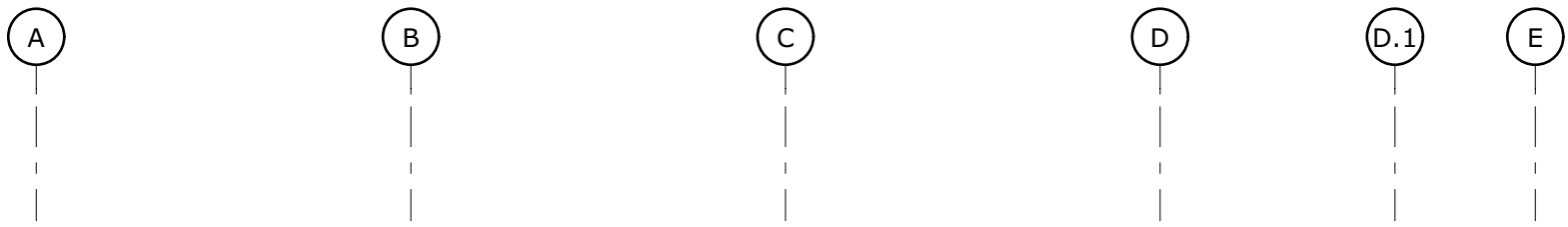
SOLAR PANELS

65607  
BRADLEY LIBRARY



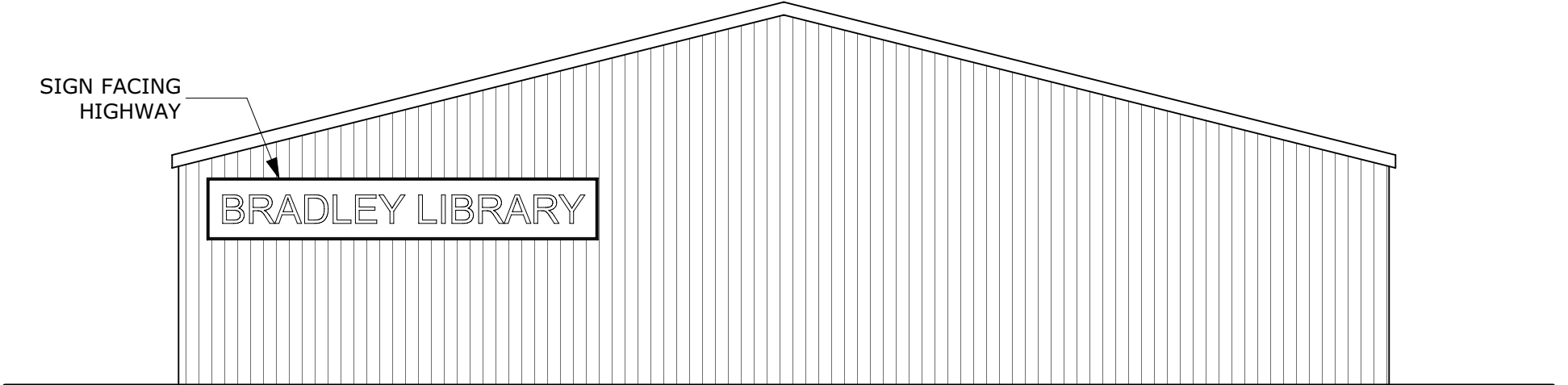
EAST ELEVATION  
SCALE: 1/8" = 1'-0"

1



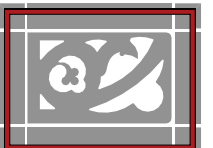
SIGN FACING  
HIGHWAY

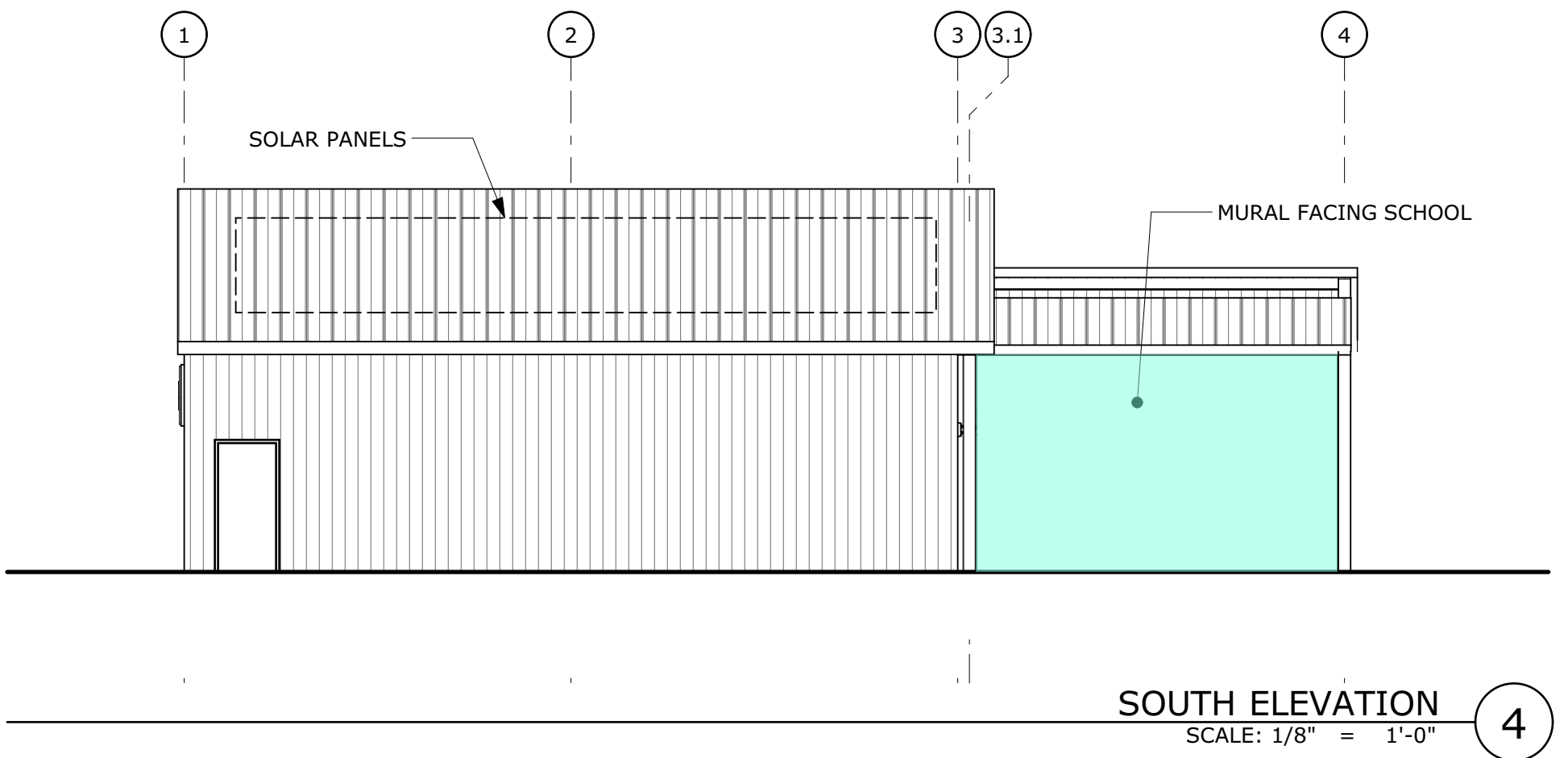
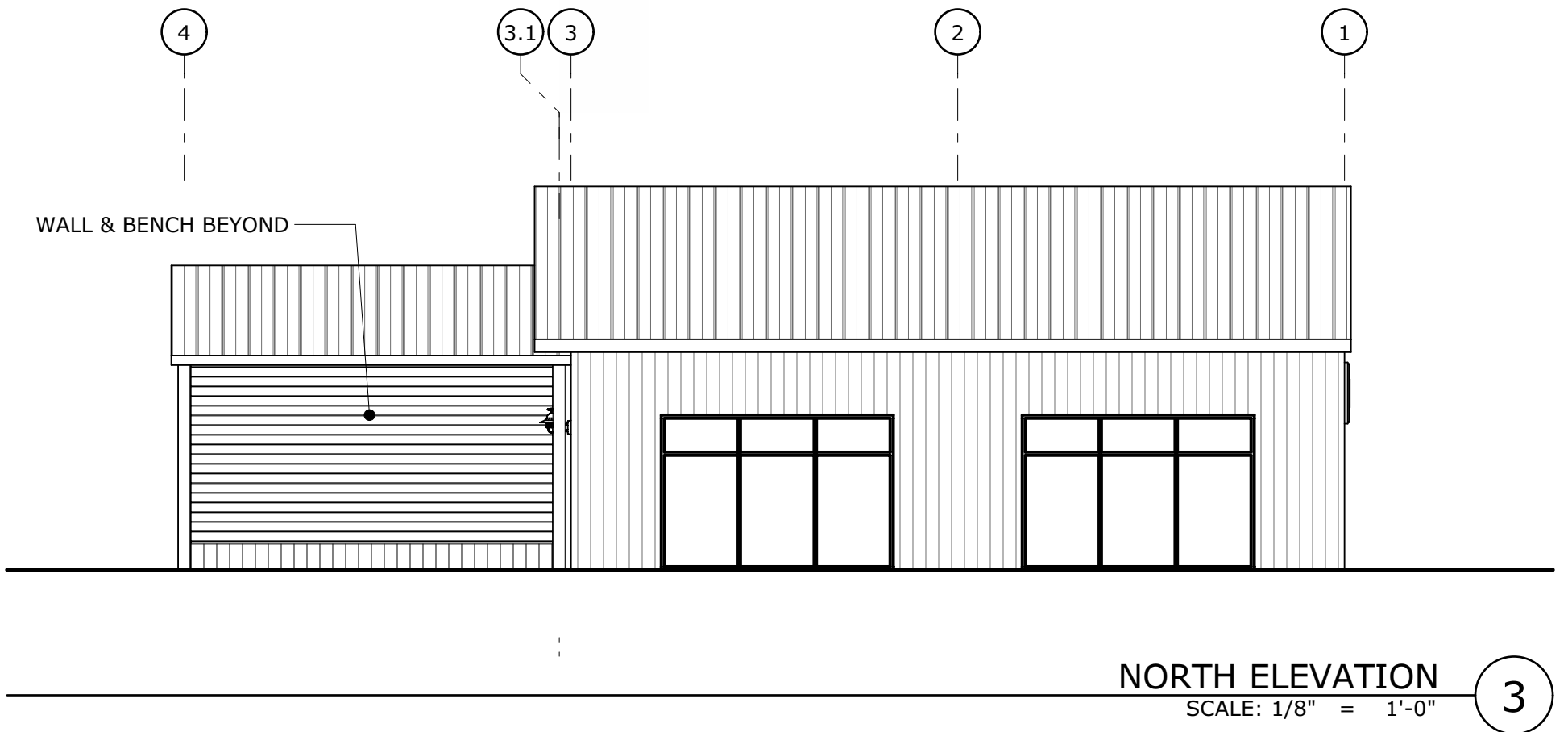
BRADLEY LIBRARY



WEST ELEVATION  
SCALE: 1/8" = 1'-0"

2

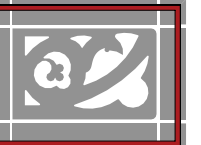






BRADLEY BRANCH LIBRARY  
3D

WESTON MILES  
ARCHITECTS  
• Architecture • Landscape •





BRADLEY BRANCH LIBRARY

3D

WESTON MILES  
ARCHITECTS  
• Architecture • Landscape •





BRADLEY BRANCH LIBRARY

3D

WESTON MILES  
ARCHITECTS  
• Architecture • Landscape •

