

SANTA RITA CREEK FLOOD STUDY

100 cfs. These results are consistent with the Master Drainage Plan Santa Rita Creek Watershed (Monterey County Surveyors, 1972) that estimated a channel capacity along this reach, and all others downstream to Russell Road, of  $\pm 100$  cfs. These characteristics of flooding within Bolsa Knolls for the observed calibration storms are illustrated in the model output plots in **Figure 3-16**.

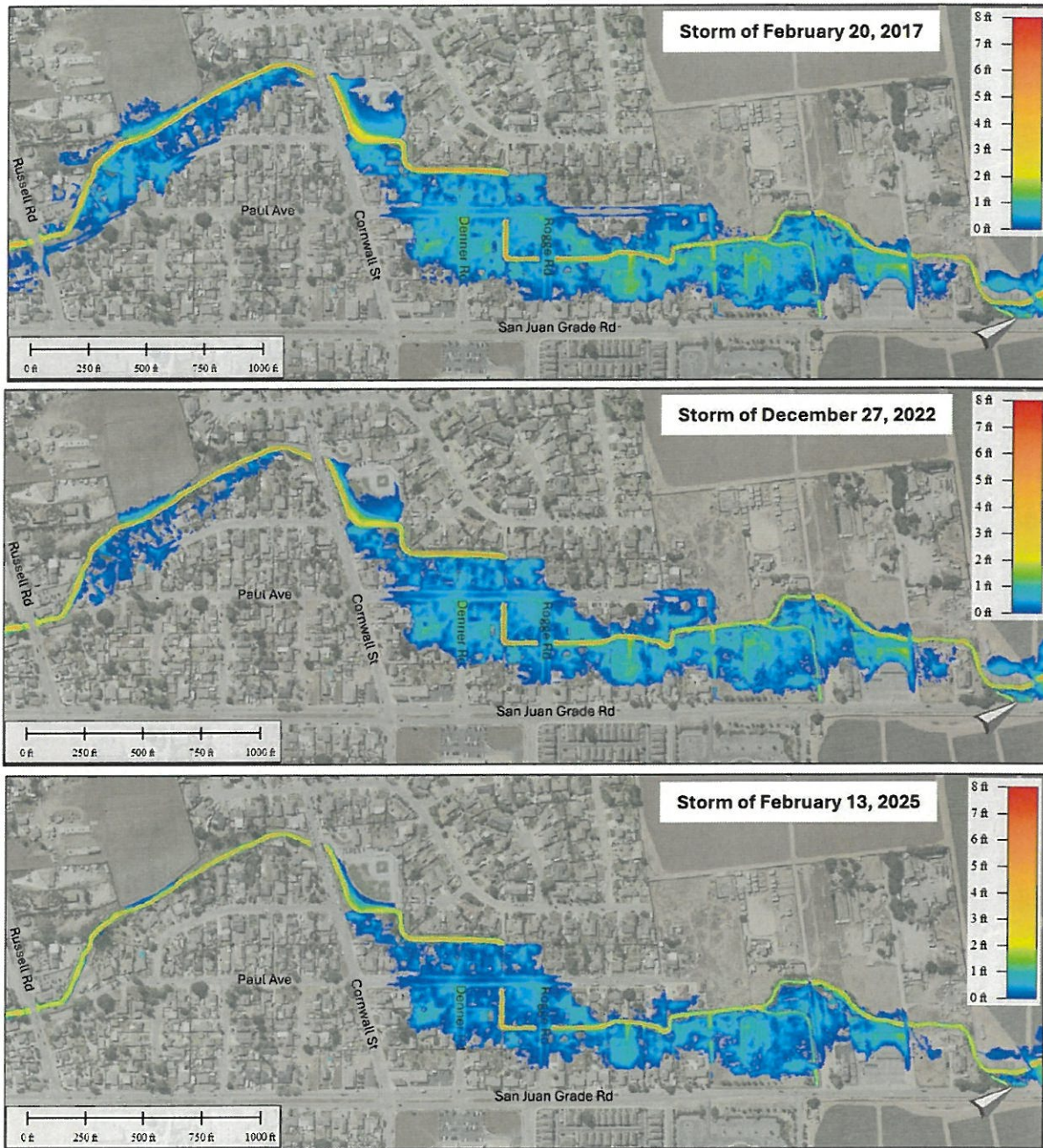


Figure 3-16 Existing conditions flood depths for historical calibration storms