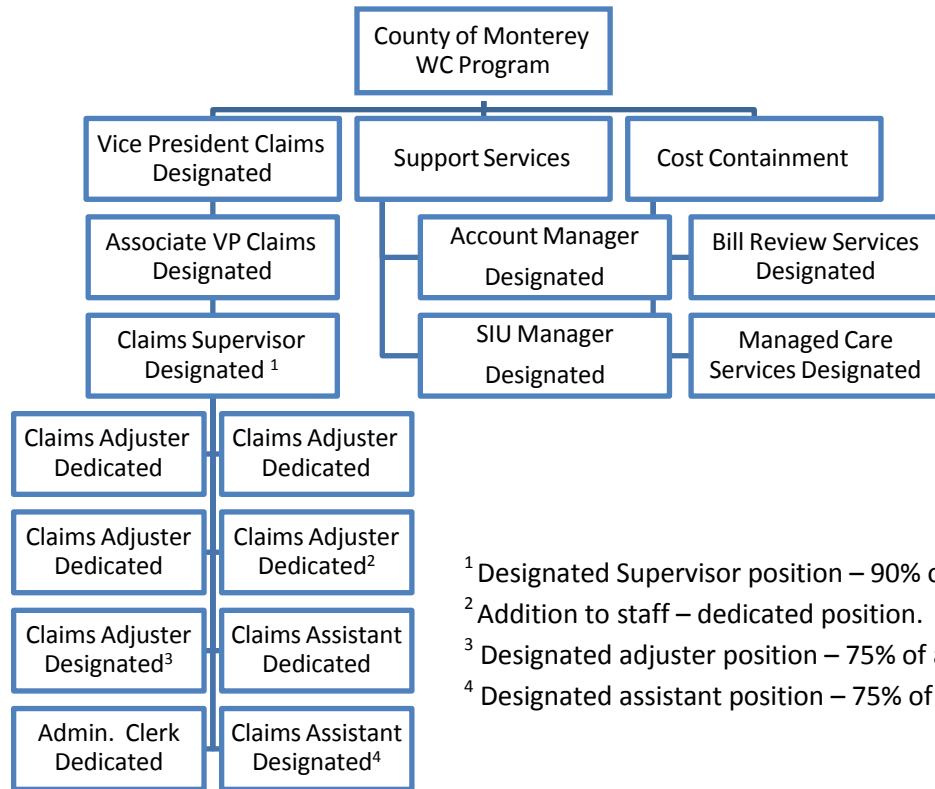


# EXHIBIT A

## STAFFING STRUCTURE CHART



<sup>1</sup> Designated Supervisor position – 90% of an FTE.

<sup>2</sup> Addition to staff – dedicated position.

<sup>3</sup> Designated adjuster position – 75% of an FTE

<sup>4</sup> Designated assistant position – 75% of an FTE