

Attachment D



Monterey County Property on former Fort Ord - Intergarrison

TRAILS & ROADS WAYFINDING MAP

- Map Legend**
- Trail (County) (approx. mileage between intersections)
 - Administrative Road (Non-motorized)
 - Single Track Trail (BLM)
 - Road (Motorized)
 - County Property
 - Fort Ord National Monument (BLM)
 - Ponds/Vernal Pools
 - Gate
 - Tower

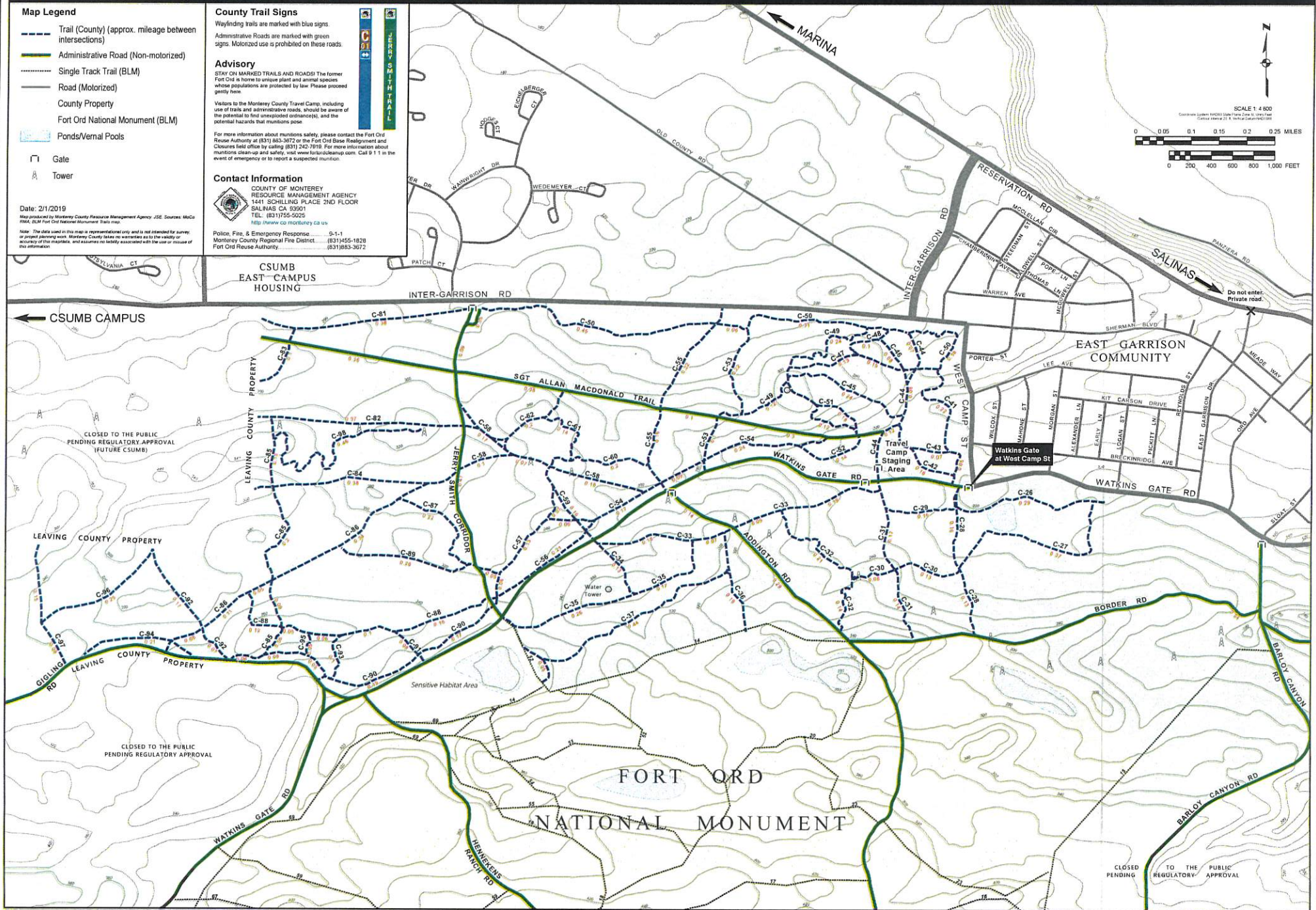
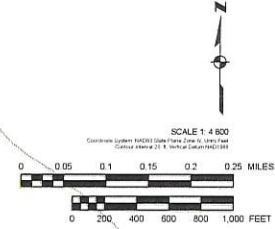
County Trail Signs
Wayfinding trails are marked with blue signs.
Administrative Roads are marked with green signs. Motorized use is prohibited on these roads.

Advisory
STAY ON MARKED TRAILS AND ROADS! The former Fort Ord is home to unique plant and animal species whose populations are protected by law. Please proceed gently here.
Visitors to the Monterey County Travel Camp, including use of trails and administrative roads, should be aware of the potential to find unexploded ordnance, and the potential hazards that munitions pose.

For more information about munitions safety, please contact the Fort Ord Reuse Authority at (831) 883-3672 or the Fort Ord Base Realignment and Closures field office by calling (831) 242-7019. For more information about munitions clean-up and safety, visit www.fortordcleanup.com. Call 911 in the event of emergency or to report a suspected munition.

Contact Information
COUNTY OF MONTEREY
RESOURCE MANAGEMENT AGENCY
1441 SCHILLING PLACE 2ND FLOOR
SALINAS CA 93901
TEL: (831) 755-5025
<http://www.co.monterey.ca.us>
Police, Fire, & Emergency Response: 9-1-1
Monterey County Regional Fire District: (831) 455-1828
Fort Ord Reuse Authority: (831) 883-3672

Date: 2/1/2019
Map produced by Monterey County Resource Management Agency. *JSE*. Sources: MDC, BLM, BLM Fort Ord National Monument, Trails map.
Note: The data used in this map is representative only and is not intended for survey or project planning work. Monterey County takes no warranties as to the validity or accuracy of the metadata, and assumes no liability associated with the use or misuse of this information.



CLOSED TO THE PUBLIC PENDING REGULATORY APPROVAL



Jacks Peak County Park

County of Monterey Resource Management Agency Parks

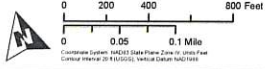
Map Legend

Points of Interest

- Group Area (Reservation Only)
- Picnic Area
- Entry Kiosk
- Parking
- Restroom
- Bench
- Water Tank
- Self-Guided Trail Sign
- Viewpoint
- Park Boundary
- Trail - approx. mileage between points
- Road
- Contour line
- Stream

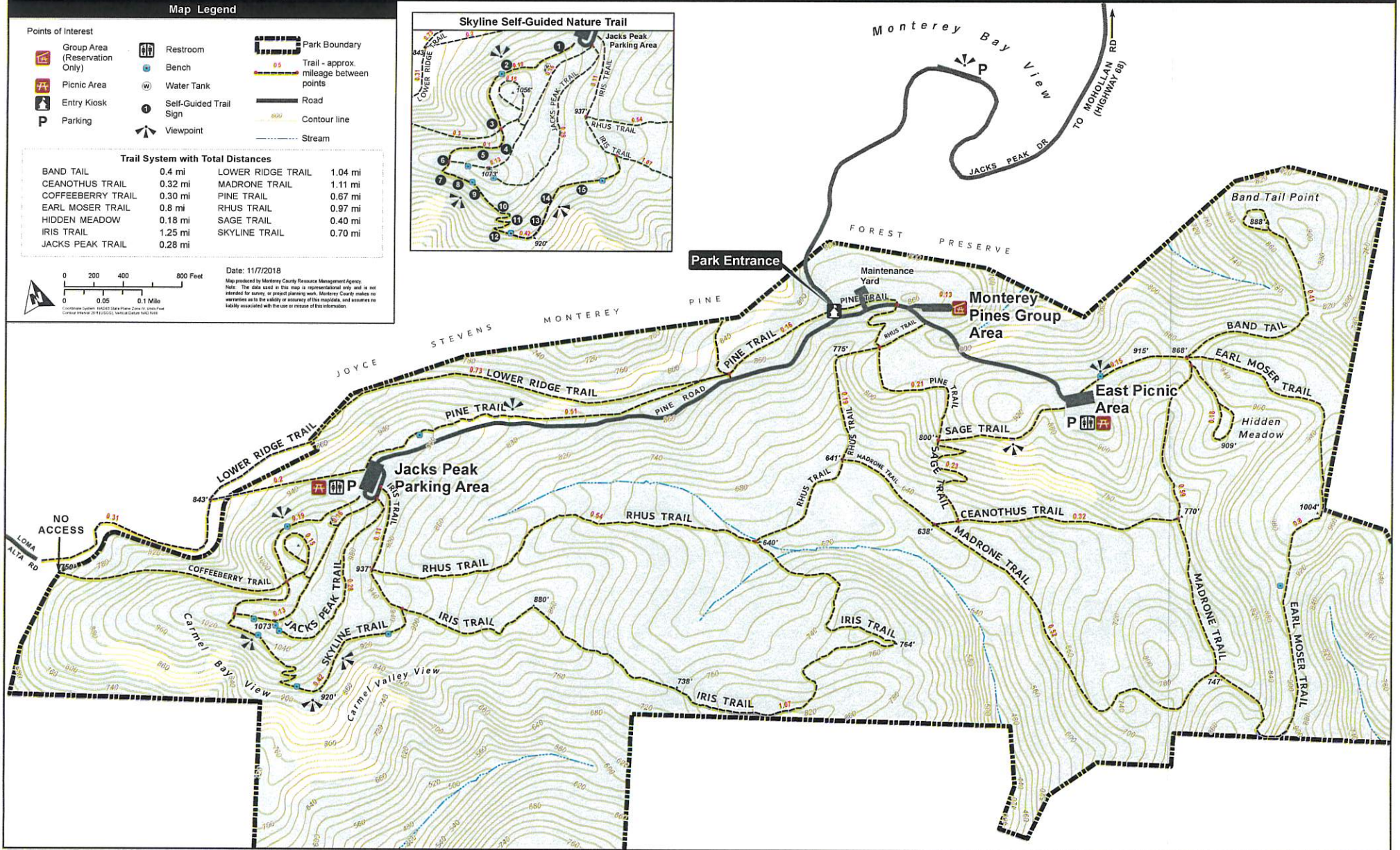
Trail System with Total Distances

BAND TAIL	0.4 mi	LOWER RIDGE TRAIL	1.04 mi
CEANOTHUS TRAIL	0.32 mi	MADRONE TRAIL	1.11 mi
COFFEEBERRY TRAIL	0.30 mi	PINE TRAIL	0.67 mi
EARL MOSER TRAIL	0.8 mi	RHUS TRAIL	0.97 mi
HIDDEN MEADOW	0.18 mi	SAGE TRAIL	0.40 mi
IRIS TRAIL	1.25 mi	SKYLINE TRAIL	0.70 mi
JACKS PEAK TRAIL	0.28 mi		



Date: 11/7/2018

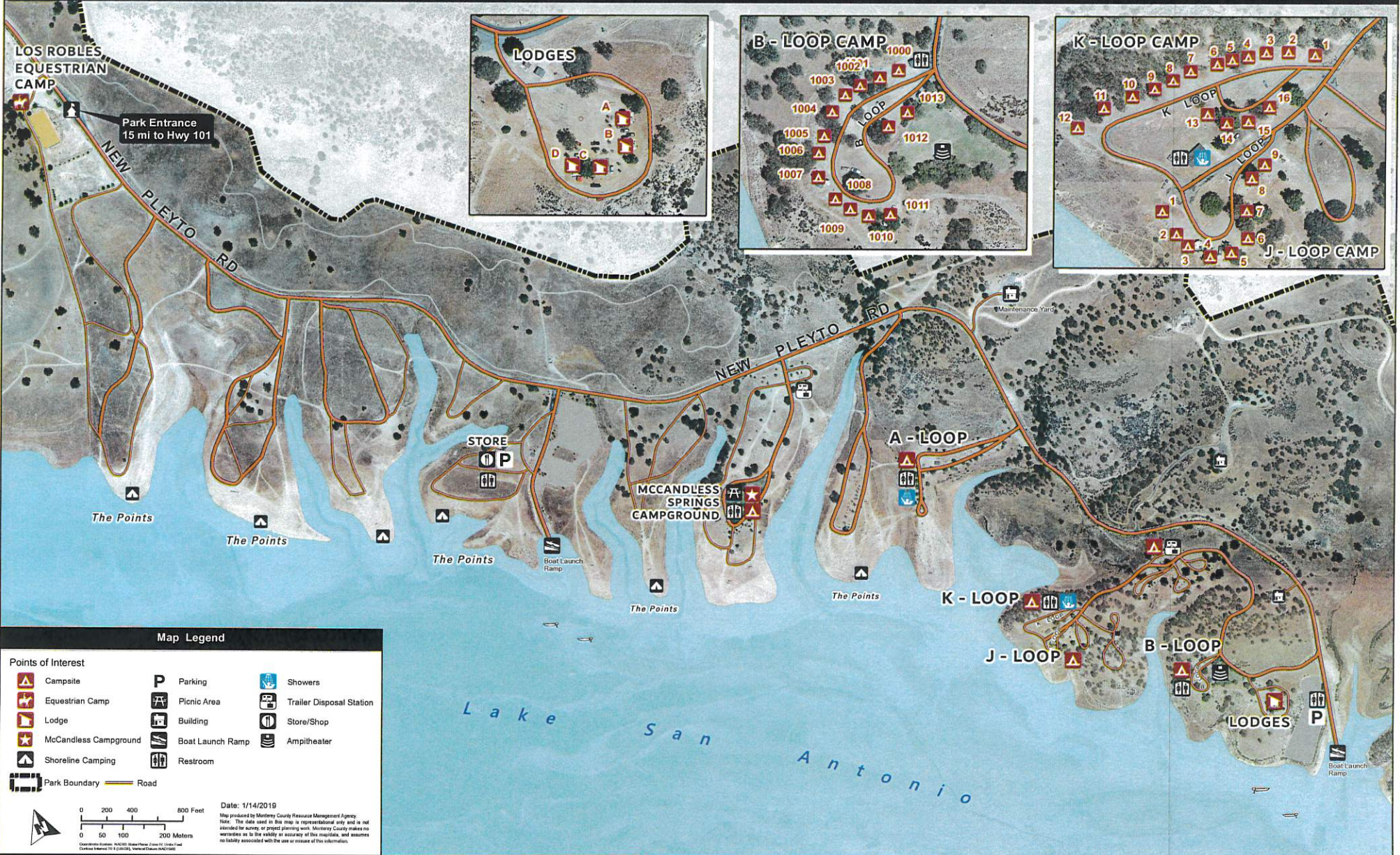
Map produced by Monterey County Resource Management Agency
 Note: The data used in this map is informational only and is not intended for survey, or project planning work. Monterey County makes no warranties as to the validity or accuracy of this map, and assumes no liability associated with the use or misuse of the information.





Lake San Antonio North Shore

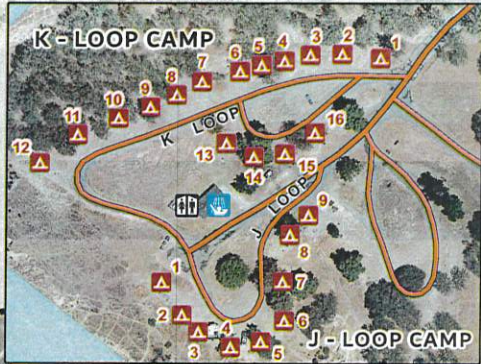
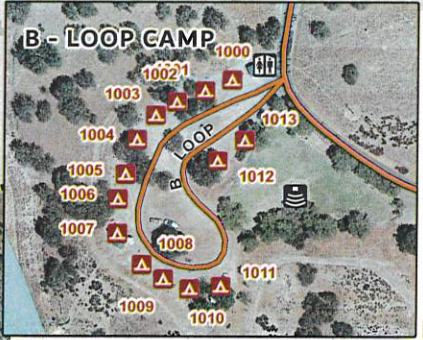
County of Monterey Resource Management Agency Parks



LOS ROBLES EQUESTRIAN CAMP

Park Entrance
15 mi to Hwy 101

NEW PLEYTO RD



The Points

The Points

The Points

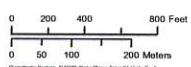
The Points

The Points

Lake San Antonio

Map Legend

- Points of Interest
- | | | | | | |
|--|-----------------------|--|------------------|--|--------------------------|
| | Campsite | | Parking | | Showers |
| | Equestrian Camp | | Picnic Area | | Trailer Disposal Station |
| | Lodge | | Building | | Store/Shop |
| | McCandless Campground | | Boat Launch Ramp | | Amphitheater |
| | Shoreline Camping | | Restroom | | |
| | Park Boundary | | Road | | |

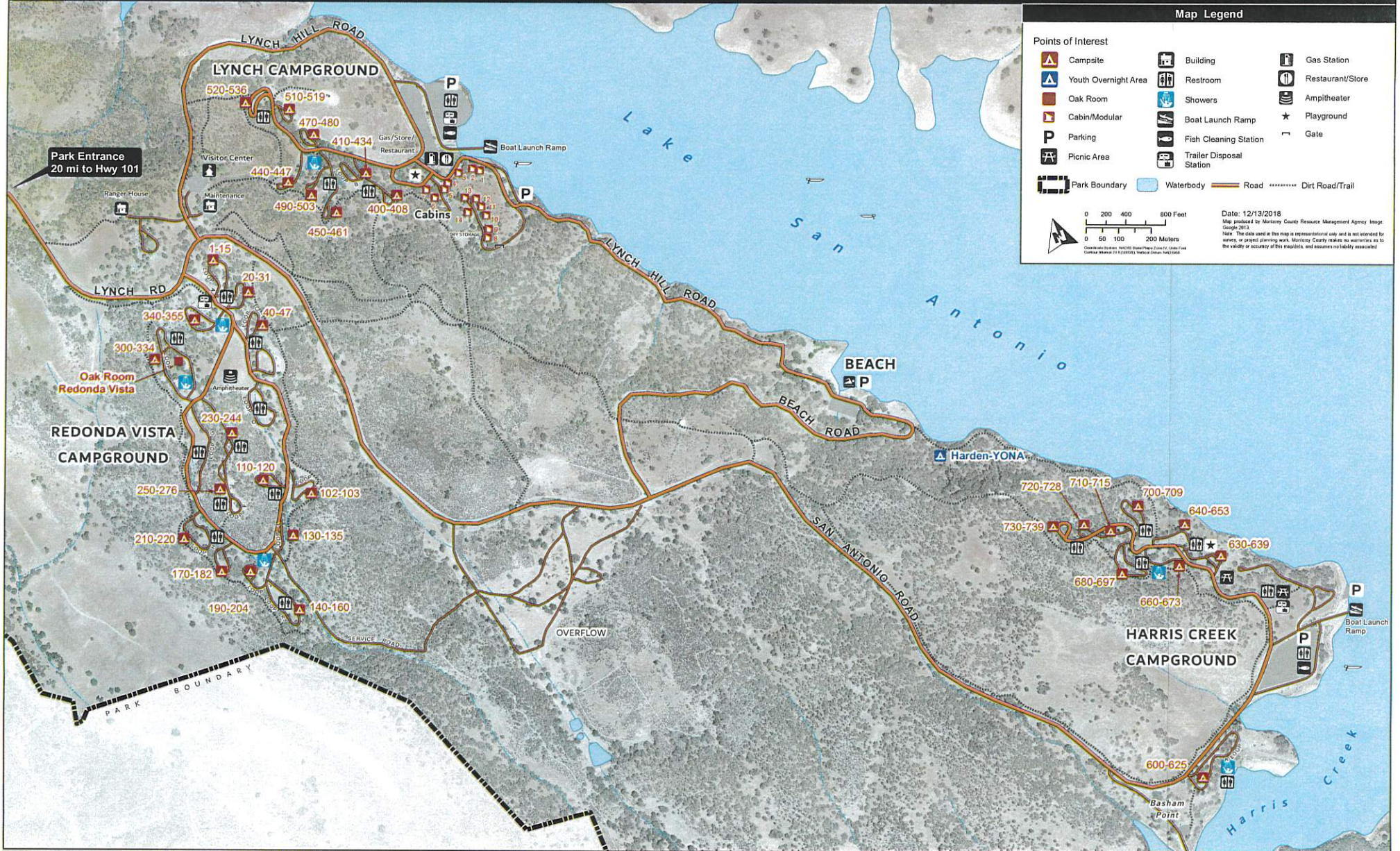


Date: 1/14/2019
 Map produced by Monterey County Resource Management Agency.
 Note: The data used in this map is representational only and is not intended for survey or project planning work. Monterey County makes no warranties as to the validity or accuracy of this map, and assumes no liability associated with the use or misuse of this information.



Lake San Antonio South Shore

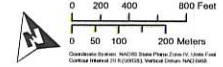
County of Monterey Resource Management Agency Parks



Map Legend

Points of Interest

- | | | | | | |
|--|----------------------|--|--------------------------|--|------------------|
| | Campsite | | Building | | Gas Station |
| | Youth Overnight Area | | Restroom | | Restaurant/Store |
| | Oak Room | | Showers | | Amphitheater |
| | Cabin/Modular | | Boat Launch Ramp | | Playground |
| | Parking | | Fish Cleaning Station | | Gate |
| | Picnic Area | | Trailer Disposal Station | | |
| | Park Boundary | | Waterbody | | Road |
| | | | Dirt Road/Trail | | |

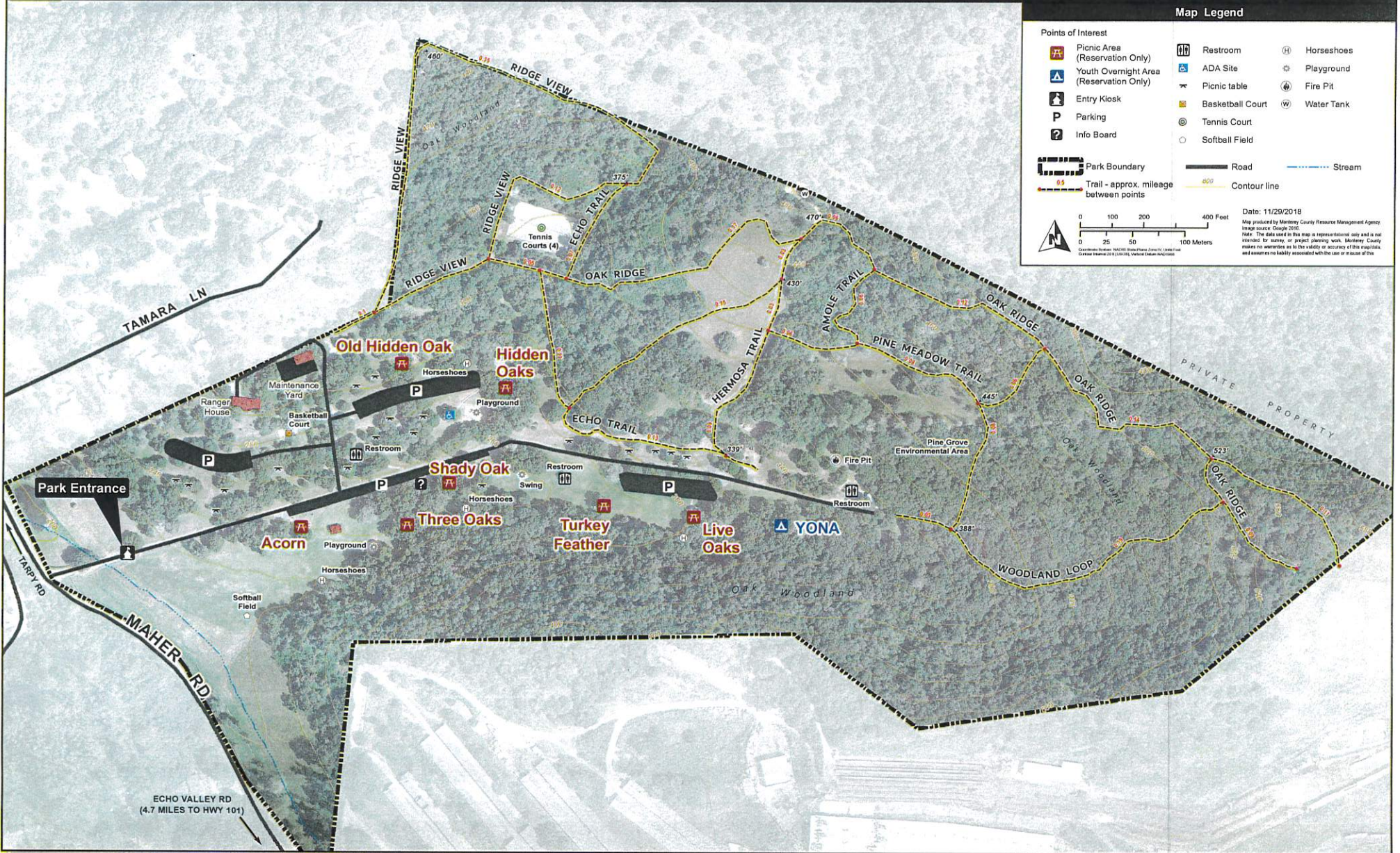


Date: 12/13/2018
 Map produced by Monterey County Resource Management Agency. Image: Google 2013.
 Note: The data used in this map is representational only and is not intended for survey, or project planning work. Monterey County makes no warranties as to the validity or accuracy of this map, and assumes no liability associated.



Royal Oaks County Park

County of Monterey Resource Management Agency Parks

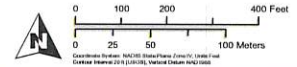


Map Legend

Points of Interest

- Picnic Area (Reservation Only)
- Youth Overnight Area (Reservation Only)
- Entry Kiosk
- Parking
- Info Board
- Restroom
- ADA Site
- Picnic table
- Basketball Court
- Tennis Court
- Softball Field
- Horseshoes
- Playground
- Fire Pit
- Water Tank

- Park Boundary
- Trail - approx. mileage between points
- Road
- Contour line
- Stream

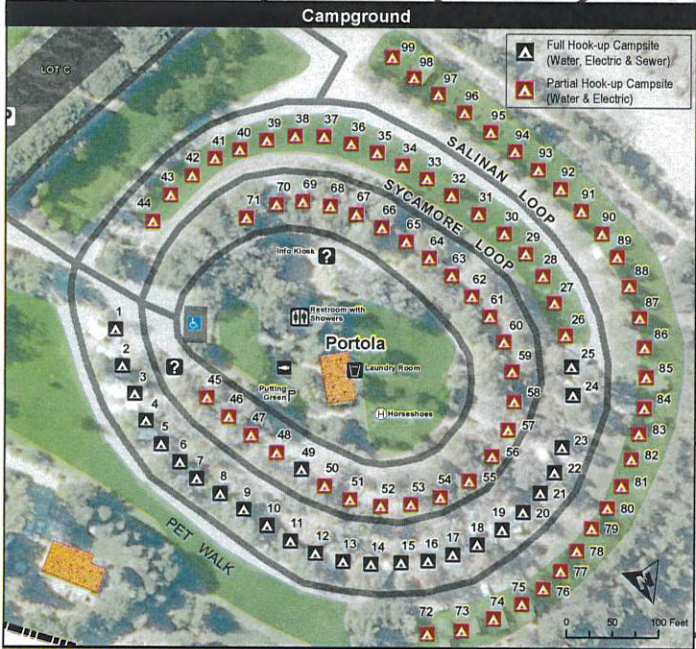
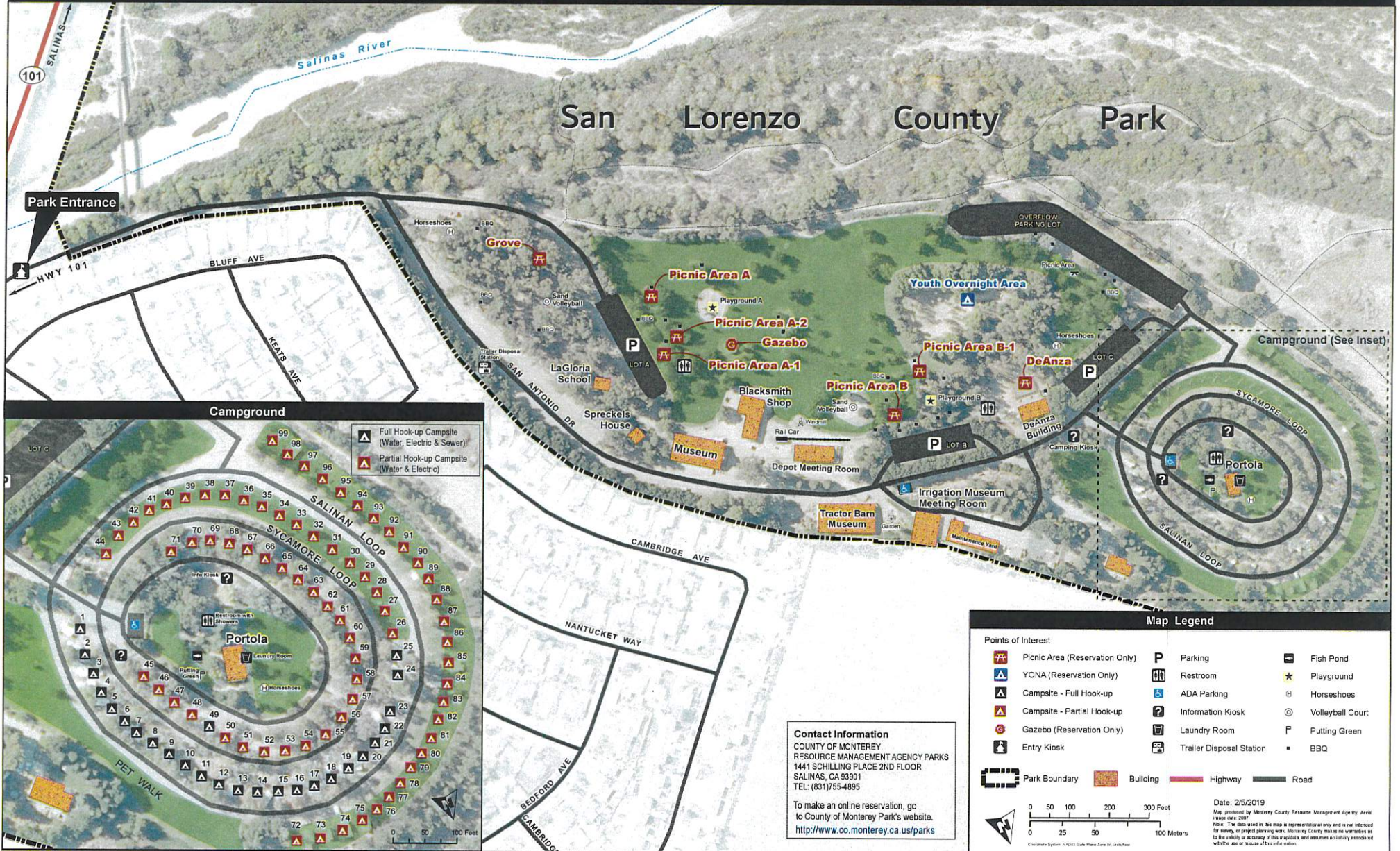


Date: 11/29/2018
 Map produced by Monterey County Resource Management Agency
 Image source: Google 2018
 Note: The data used in this map is representational only and is not intended for survey or project planning work. Monterey County makes no warranties as to the validity or accuracy of this map/outline, and assumes no liability associated with the use or misuse of this



San Lorenzo County Park

County of Monterey Resource Management Agency Parks



- Full Hook-up Campsite (Water, Electric & Sewer)
- Partial Hook-up Campsite (Water & Electric)

Contact Information
 COUNTY OF MONTEREY
 RESOURCE MANAGEMENT AGENCY PARKS
 1441 SCHILLING PLACE 2ND FLOOR
 SALINAS, CA 93901
 TEL: (831)755-4895

To make an online reservation, go to County of Monterey Park's website.
<http://www.co.monterey.ca.us/parks>

Map Legend

Picnic Area (Reservation Only)	Parking	Fish Pond
YONA (Reservation Only)	Restroom	Playground
Campsite - Full Hook-up	ADA Parking	Horseshoes
Campsite - Partial Hook-up	Information Kiosk	Volleyball Court
Gazebo (Reservation Only)	Laundry Room	Putting Green
Entry Kiosk	Trailer Disposal Station	BBQ
Park Boundary	Building	Highway
		Road

Date: 2/5/2019
 Map produced by Monterey County Resource Management Agency Aerial image date: 2007
 Note: The data used in this map is representational only and is not intended for survey, or project planning work. Monterey County makes no warranties as to the validity or accuracy of this information, and assumes no liability associated with the use or misuse of this information.

Scale: 0 50 100 200 300 Feet
 0 25 50 100 Meters



Toro County Park

County of Monterey Resource Management Agency Parks

