



MONTEREY COUNTY
CHILDREN'S COUNCIL

2022-2023 Annual Report Overview Presentation

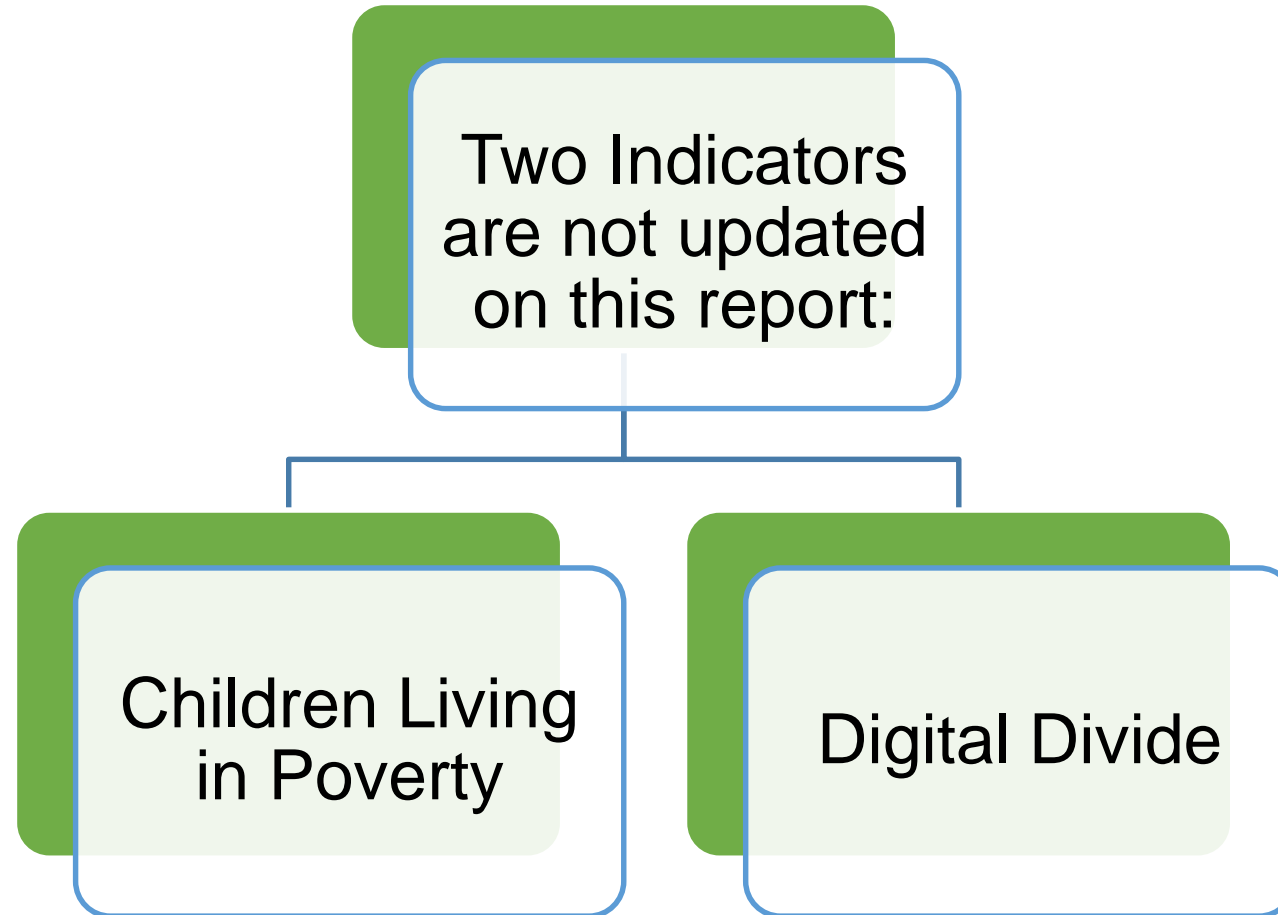
March 12, 2024



Why an Annual Report is Important

- The Annual Report was created to help our community understand the needs of our children and youth, in order to build community commitment to meet these needs. It is a local and state “snapshot” documenting the status of our children and youth. This Annual Report is intended to help community members make informed decisions with regarding public policy issues, volunteer efforts and support for nonprofit organizations.
- The Annual Report has four goals:
 - To serve as a benchmark to measure how children and youth are faring over time
 - To serve as a catalyst to mobilize community wide efforts to address the most critical challenges to children and youth’s circumstances
 - To recognize areas in which services and initiatives have been successful in improving children and youth’s quality of life in order to maintain continued support for these efforts
 - To present multiple indicators in a simple arrangement and location

Data Highlights



Executive Summary

When an indicator has been assessed as “stable”, this means that the trend line is flat, indicating that there is not much change or inconsistency on the data figures. On the other hand, when an indicator is assessed as “fluctuating”, this means that the data figures are inconsistent from year to year. An assessment of “increasing”, refers to higher numbers in the value of the data and an assessment of “decreasing”, refers to lower numbers in the value of the data. When looking at the assessment of “increasing” or “decreasing”, please keep in mind that these terms reflect how the rate or number in each particular trend is changing. They do not indicate improvement or worsening.

Birth to 18

Monterey County Trend

State Trend

Children Supported by CalWORKs	Fluctuating	N/A
Children Living Below Poverty Level *	Decreasing	N/A
Children with Health Insurance	Stable	N/A
Child Abuse and Neglect	Fluctuating	N/A
Children in Foster Care	Decreasing	N/A
Socio-Economically Disadvantaged Students	Increasing	N/A
Student Homelessness	Fluctuating	N/A
Digital Divide *	Year 2 Data Trend Unavailable	N/A

Birth to 5

**Monterey
County trend**

**State
Trend**

Low Birth Weight

Increasing

N/A

Early Prenatal Care

Fluctuating

N/A

Education of Mother

Stable

N/A

Licensed Child Care and Education Slots

Fluctuating

N/A

Licensed Child Care and Education Costs

Increasing

N/A

Kindergarten Readiness

Increasing

N/A

6 to 18

Monterey County Trend

CA Trend

Public School Enrollment

Decreasing

N/A

Children Enrolled in Special Education

Increasing

N/A

English Language Arts

Stable

N/A

English Language Learners

Fluctuating

N/A

Math CAASPP Scores

Stable

Stable

Graduation Rates Over Time

Fluctuating

Fluctuating

Student Suspension Rates Over Time

Fluctuating

Fluctuating

Student Expulsion Rates Over Time

Fluctuating

Fluctuating

Student Drop Out Rates

Decreasing

Stable

Births to Teens

Decreasing

N/A

Sexually Transmitted Infection Cases

Fluctuating

N/A

Juvenile Misdemeanor and Felony Arrests

Fluctuating

N/A

Suicide Trends in Youth

Decreasing

N/A

Substance Abuse and Non-Fatal Overdoses in Youth

Fluctuating

N/A

Substance Abuse and Overdoses in Youth

Fluctuating

N/A

Previous Initiatives and Areas of Focus

All Kids, *Our* Kids

**Graduating
Healthy Students**

**Community
Alliance for
Safety & Peace**

System of Care

**Child Welfare
Redesign**

THP



**COMIENZOS
BRILLANTES**
INICIATIVA PARA PROMOVER EL DESARROLLO INFANTIL

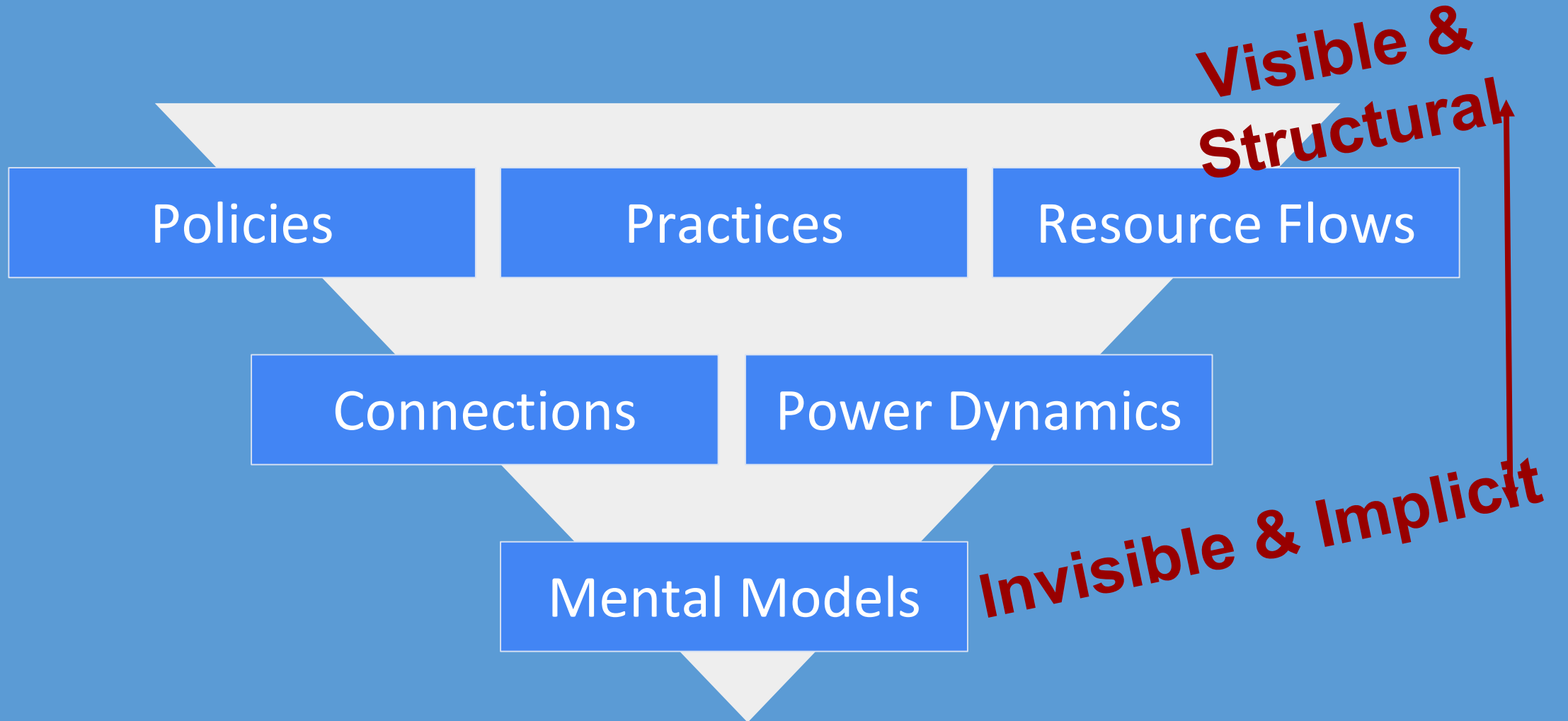
**BRIGHT
BEGINNINGS**
EARLY CHILDHOOD DEVELOPMENT INITIATIVE

Annual Report to the Board of Supervisors

March 12, 2024

Transformational Systems Change

- Centering Young Children & Equity -



**COMIENZOS
BRILLANTES**
INICIATIVA PARA PROMOVER EL DESARROLLO INFANTIL

**BRIGHT
BEGINNINGS**
EARLY CHILDHOOD DEVELOPMENT INITIATIVE

BRIGHT BEGINNINGS BACKBONE STAFF

Sonja Koehler - Director

Cristina De Orta - Program Support

Iris Gamez - Community Outreach, Inclusion & Advocacy Coordinator

Rebeca Zuniga - Communications Coordinator



BRIGHT BEGINNINGS INITIATIVE LEADERSHIP

Lori Medina - Department of Social Services (Children's Council Chair)

Edward Moreno - Public Health Officer (Initiative Co-Chair)

Francine Rodd - First 5 Monterey County (Initiative Co-Chair)

EARLY CHILDHOOD DEVELOPMENT ADVISORY GROUP

Jose Arreola - City of Salinas

Alma Cervantes - Building Healthy Communities

Laura Dunn - Carmel Unified School District

Dana Edgull - Behavioral Health

Claudia Gomez - Door to Hope

Krista Hanni - Health Department

Niaomi Hrepich - WIC, Health Department

Sonia Jaramillo - Office of Education - Early Learning Program

Caryn Lewis - Office of Education - Ed Services

Noemy Loveless - North Monterey Unified School District

Josh Madifs - United Way of Monterey County

Sarait Martinez - Centro Binacional

Megan Matteoni - Office of Education - Quality Matters

Julie Foster - Read to Me Project

Mamas de Salinas Abogan

Maria Ortiz - MAOF Resource & Referral

Mayra Perez Diaz - United Way of Monterey County

Ginger Pierce - Child Abuse Prevention Council

Angie Ramirez - CAPSLO

Laurie Ramirez - Office of Education - Child Care Planning Council

Beth Reeves-Fortney - First 5 Monterey County

Mayola Rodriguez - Go Kids, Inc.

Wendy Root Askew - Office of the Supervisor - District 4

Michael Applegate - Bright Futures

Shannan Watkins - Early Development Services

Collective Impact

Common Agenda

Backbone

Mutually Reinforcing Action

Continuous Improvement

Shared Measurement

CROSS-CUTTING CAPACITY

- Generate sustainable funding for early care and learning.
- Engage families in advocacy.
- Raise awareness and capacity.

Guiding Principles

Equity-centered

Interconnected

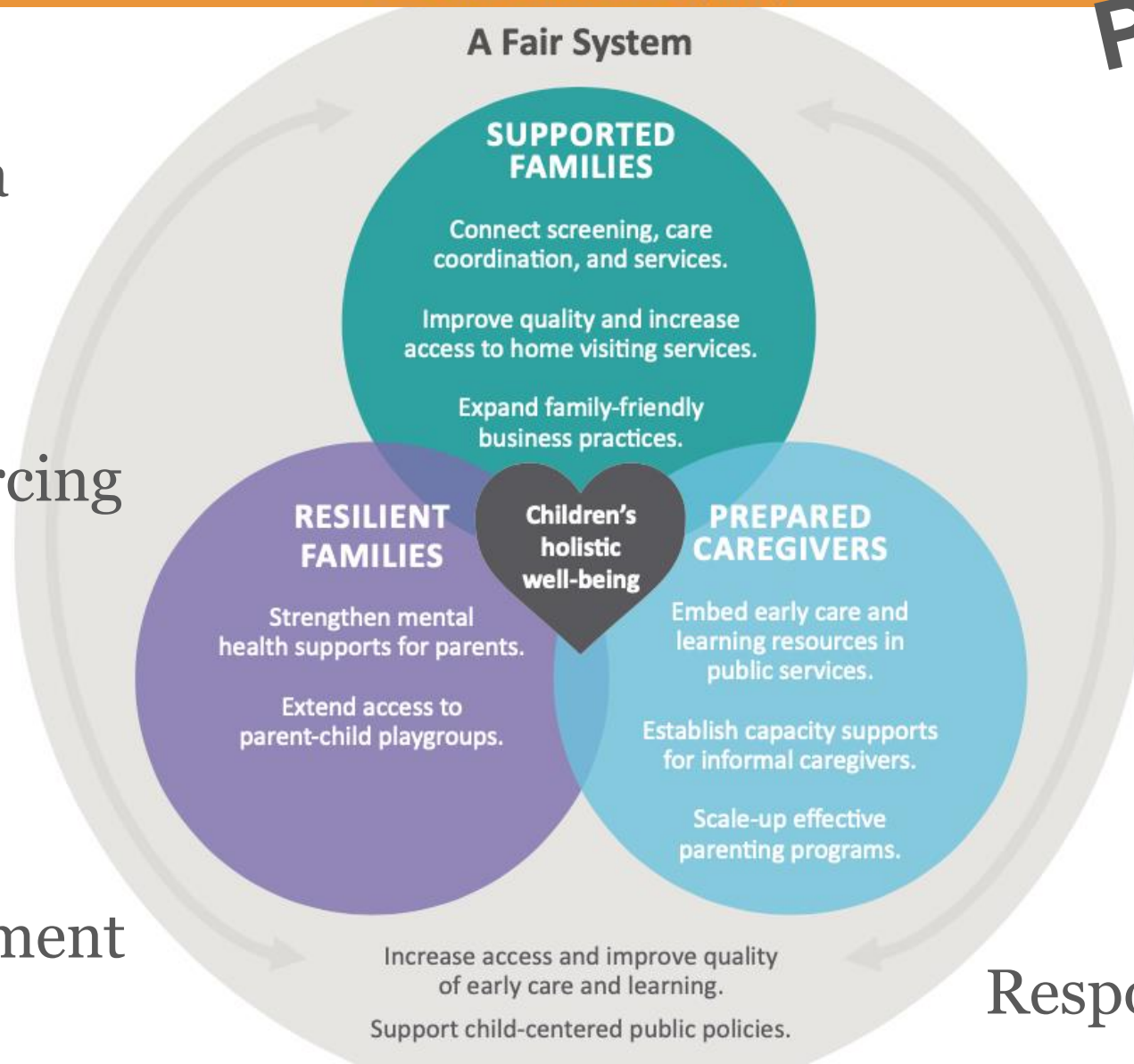
Holistic

Co-creative

Results-based

Data-informed

Responsive & Reflective





Commitment to Strategic Alignment

Maternal Mental Health

Supporting networking through Task Force & Newsletter. Raising awareness through community walks, resolutions. Building capacity through trainings, forums, and technical assistance.

Early Learning Systems

Supporting: Start-up and administration of Family Child Care Homes; Enrollment in early learning programs; Start-up of Early Childhood Education Apprenticeship; Connecting informal caregiver capacity builders.

Trauma Informed Practices

Reflective Practice for VIDA Community Health Workers & for the Backbone.
Integration of Mamas de Salinas Abogan into multiple areas of work.
Backbone capacity building in equity, facilitation, collective impact.

Reflective, Relevant & Responsive

Interconnected & Co-Designed

Transforming Systems

that support all young children and their families,
centered on race, equity, diversity and inclusion.

Universal
Goal

25%

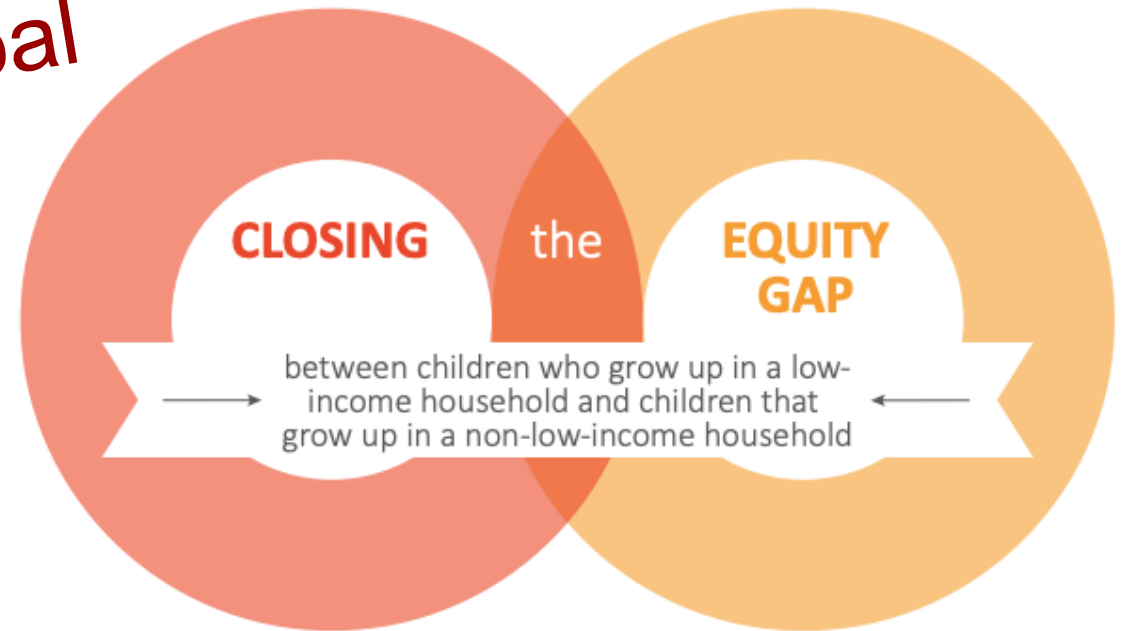


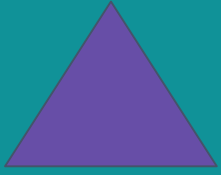
By 2025, **DOUBLE** the number of children ready for kindergarten

50%



Targeted
Goal





Fostering Child-Centered Impact & Investment

In Monterey County, there is an estimated ***\$156 million gap to serve all young children currently eligible*** for state or federal child care subsidies.

HAVE: 6,300 children served with \$112mil.

NEED: \$156mil to serve additional 9,000.



@brightbeginmc



@brightbeginningsmc



@BrightBeginMC

