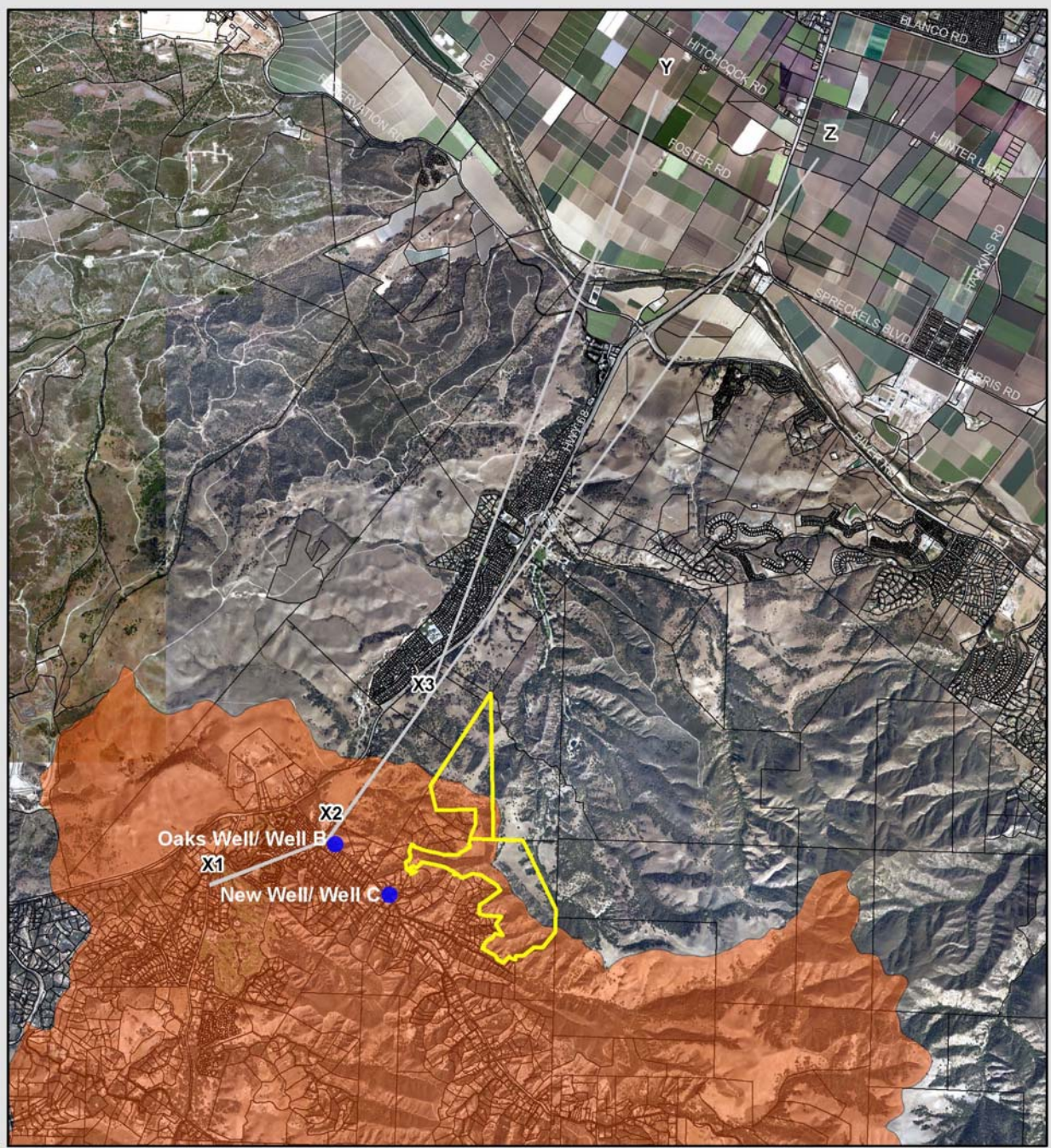


Attachment G  
Referenced Exhibits  
MR1-1, MR1-2, and MR1-3, MR2-1  
and  
Figure 3.6-1 from the Final EIR

PLN000696

This page intentionally left blank.



**Legend**

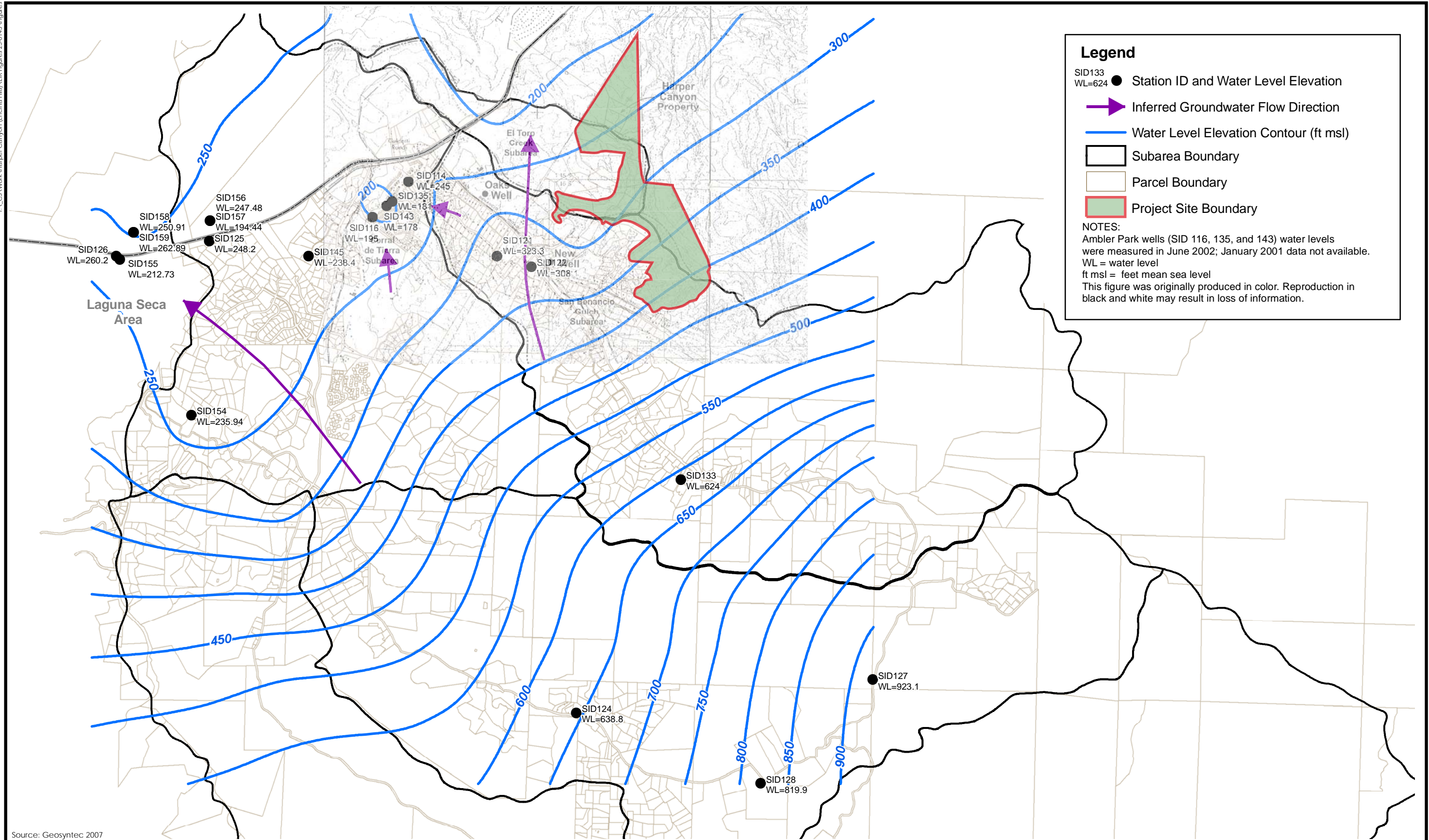
- Harper Canyon Realty
- Well
- Geosyntec El Toro Area Study Area
- Geosyntec Adendum X Section
- M\_CO.Parcels

Source: MCWRA2011



Figure MR1-1  
Geosyntec Study Area in Relationship to the Project Site

T:\\_CS\Work\Harper Canyon (Encina Hills)\EIR Figures\25-0143\Figures

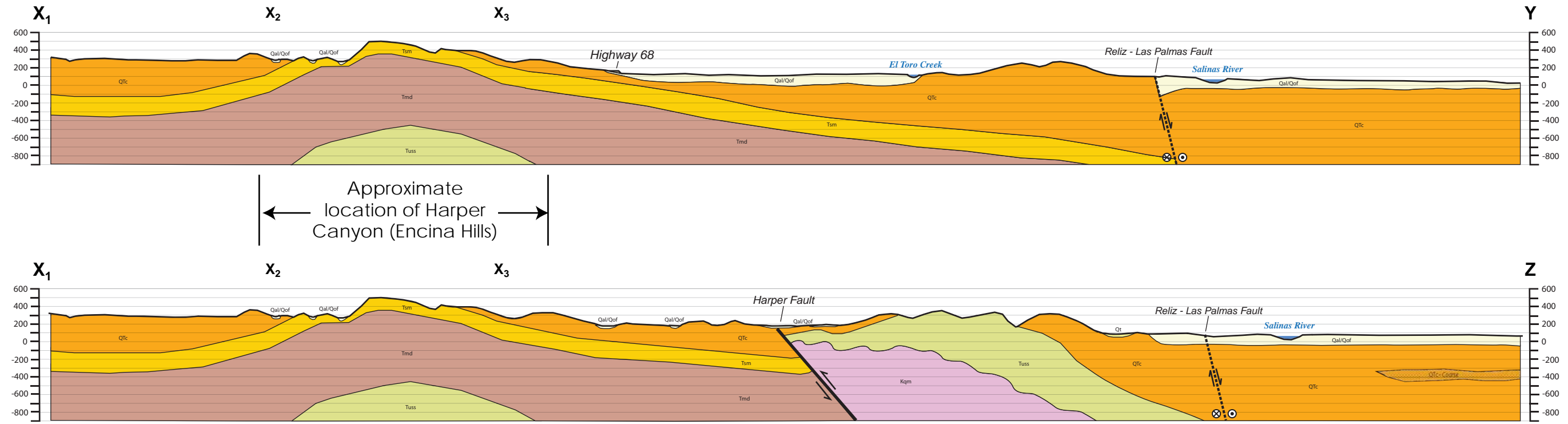


Source: Geosyntec 2007



**Figure MR1-2**  
 Geosyntec Study Area Groundwater Flow





**LEGEND**

- Well from MCWRA database (see Table 1 for well ID)
- ▲ Well from Yates et al 2005
- 50 Estimated Groundwater Elevation Contour Based on Jan 2001 data and contour map (Geosyntec, 2007), MCWRA database, and Yates et. al (2005).

**Well IDs for Supplemental Wells**

- |                  |                   |
|------------------|-------------------|
| 1) 16S/02E-03A01 | 6) 15S/03E-18F01  |
| 2) 16S/02E-02D05 | 7) 15S/03E-18C02  |
| 3) 16S/02E-02D01 | 8) 15S/03E-18B01  |
| 4) 15S/02E-25C01 | 9) 15S/03E-08T50  |
| 5) 15S/03E-18M02 | 10) 15S/03E-17M01 |

NOTES:  
 Geology adapted from Clark et al. 2000, Rosenberg, L.I. 2001, Yates et al. 2005, Kennedy Jenks, 2004  
 Well locations are approximate.

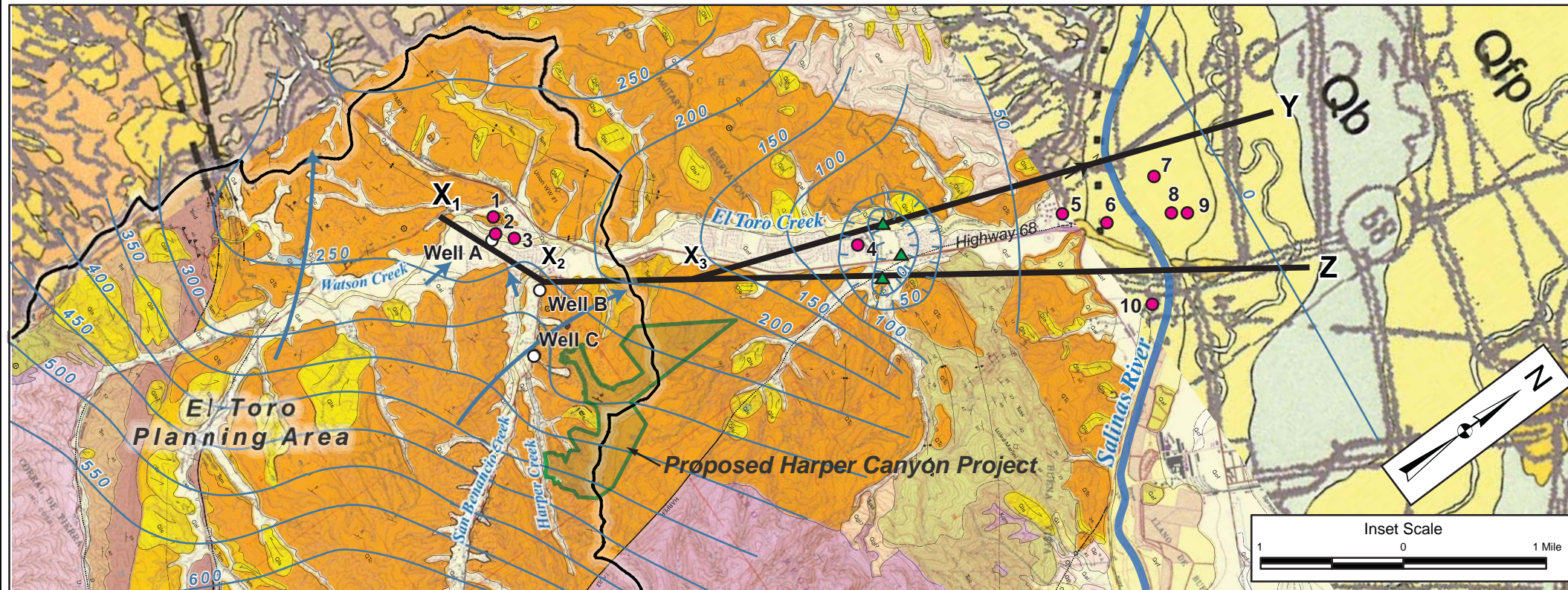
Cross-Sections Have 2X Vertical Exaggeration  
 2,500 0 2,500 Feet

**Geologic Map and Cross-Sections from El Toro to Salinas Valley**

El Toro Groundwater Study  
 Monterey County, CA

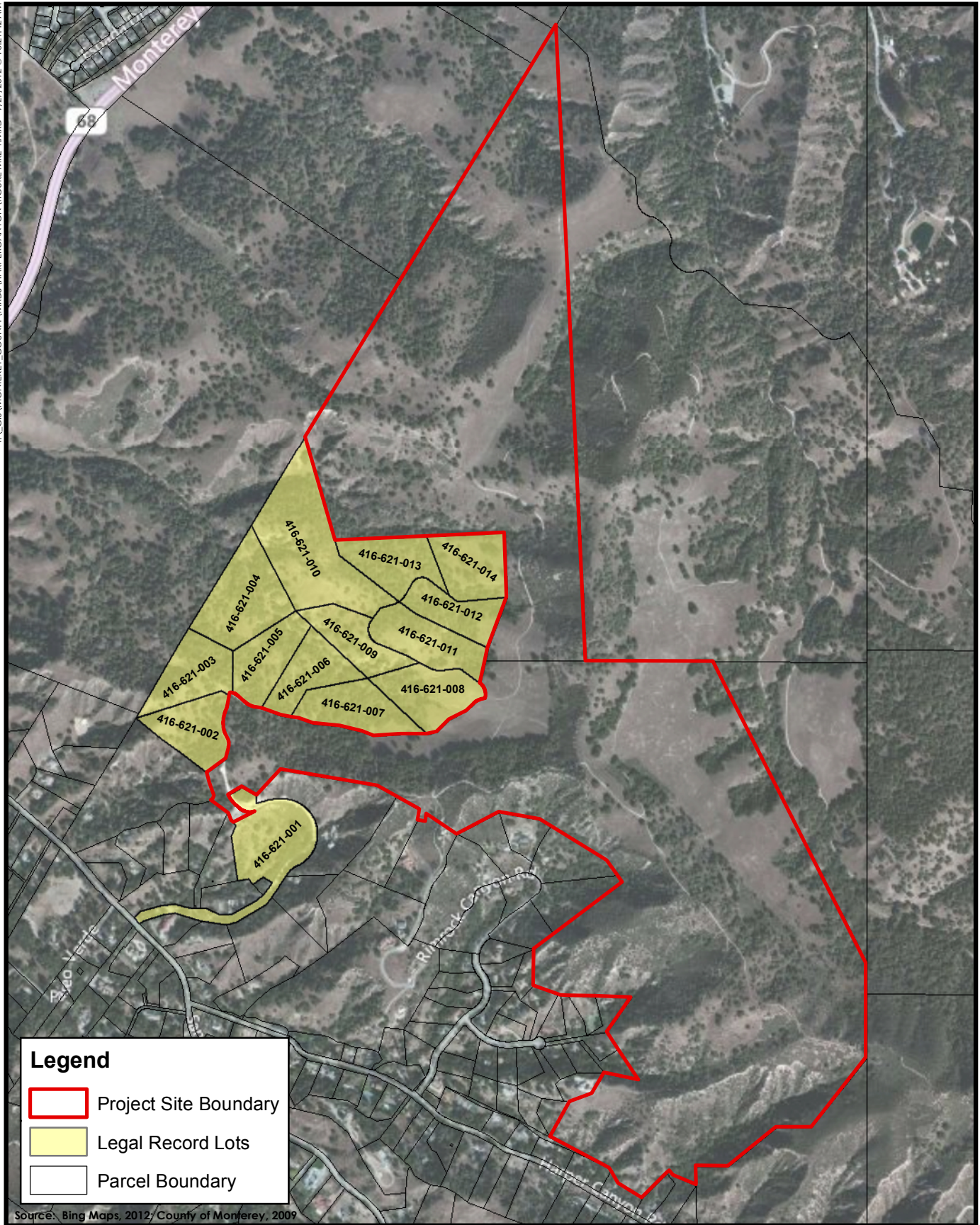
**Geosyntec**  
 consultants

June 2010

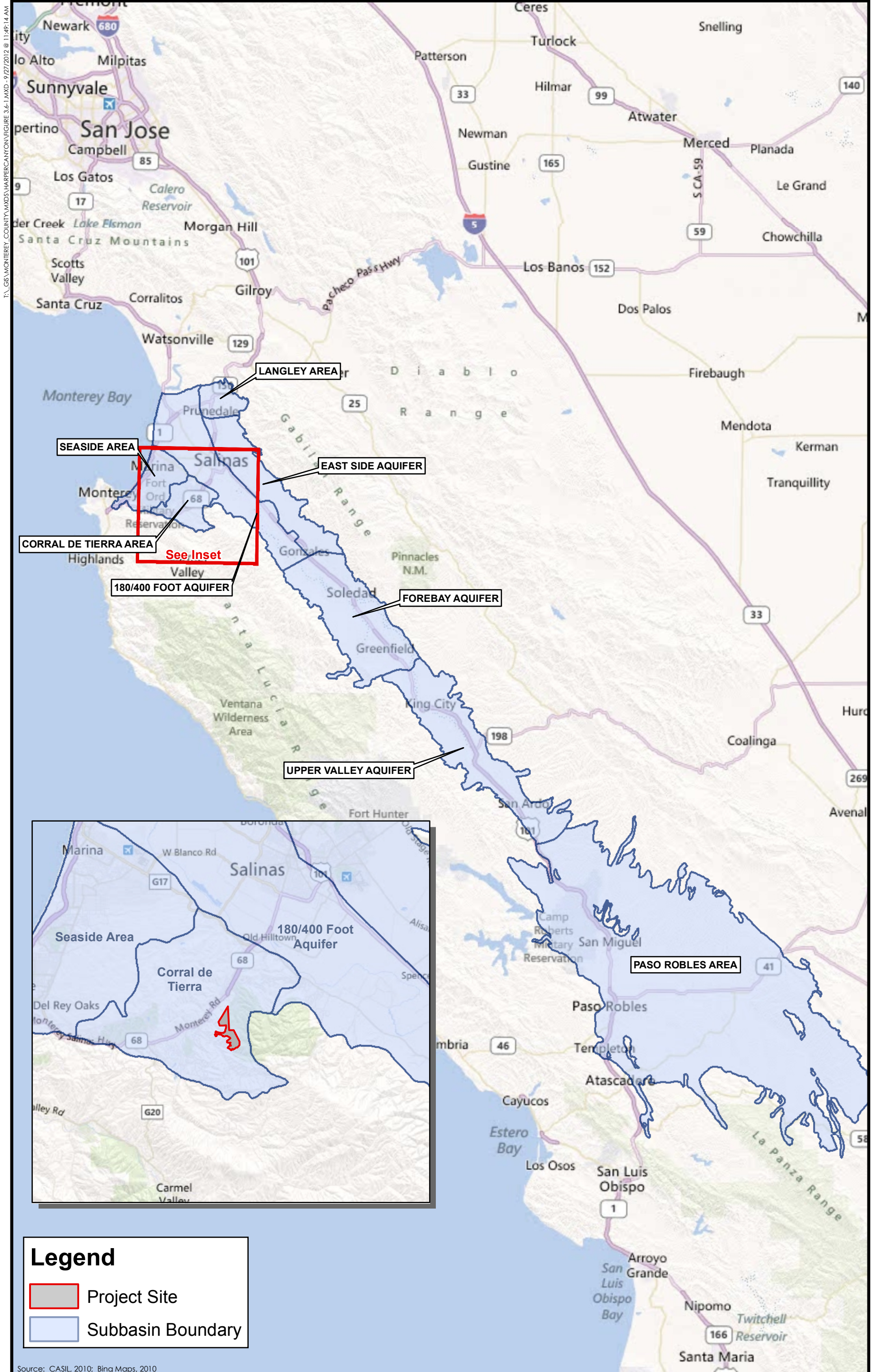


Source: Geosyntec Consultants, June 2010

Figure MR1-3  
 Geosyntec Study Area Geologic Cross Sections



**Figure MR2-1**  
14 Legal Lots of Record



**Figure 3.6-1**  
Groundwater Basin Map

This page intentionally left blank.