

Attachment B
Final Map

PLN100138
Area I-2

This page intentionally left blank.

LINETYPES

- SUBDIVISION BOUNDARY
- - - NEW LOT OR PARCEL LINE
- - - PUBLIC UTILITY EASEMENT
- - - NEW BUILDING ENVELOPE
- - - NEW EASEMENT
- - - EXISTING LOT LINE
- - - EXISTING RIGHT OF WAY
- - - EXISTING EASEMENT
- - - EXISTING CENTERLINE

LOT/PARCEL

- DOTTED TEXT
- ADJACENT RECORD INFORMATION

ABBREVIATIONS

- AC ACRES
- B.E. BUILDING ENVELOPE
- C&T CITIES AND TOWNS
- LS LENGTH
- L NUMBER
- N.O. OFFICIAL RECORDS
- PG PAGE
- PM PARCEL MAP
- PUE PUBLIC UTILITY EASEMENT
- R RIGHT OF WAY
- SS SANITARY SEWER
- SUR SURVEYS
- VOL VOLUME

SYMBOLS

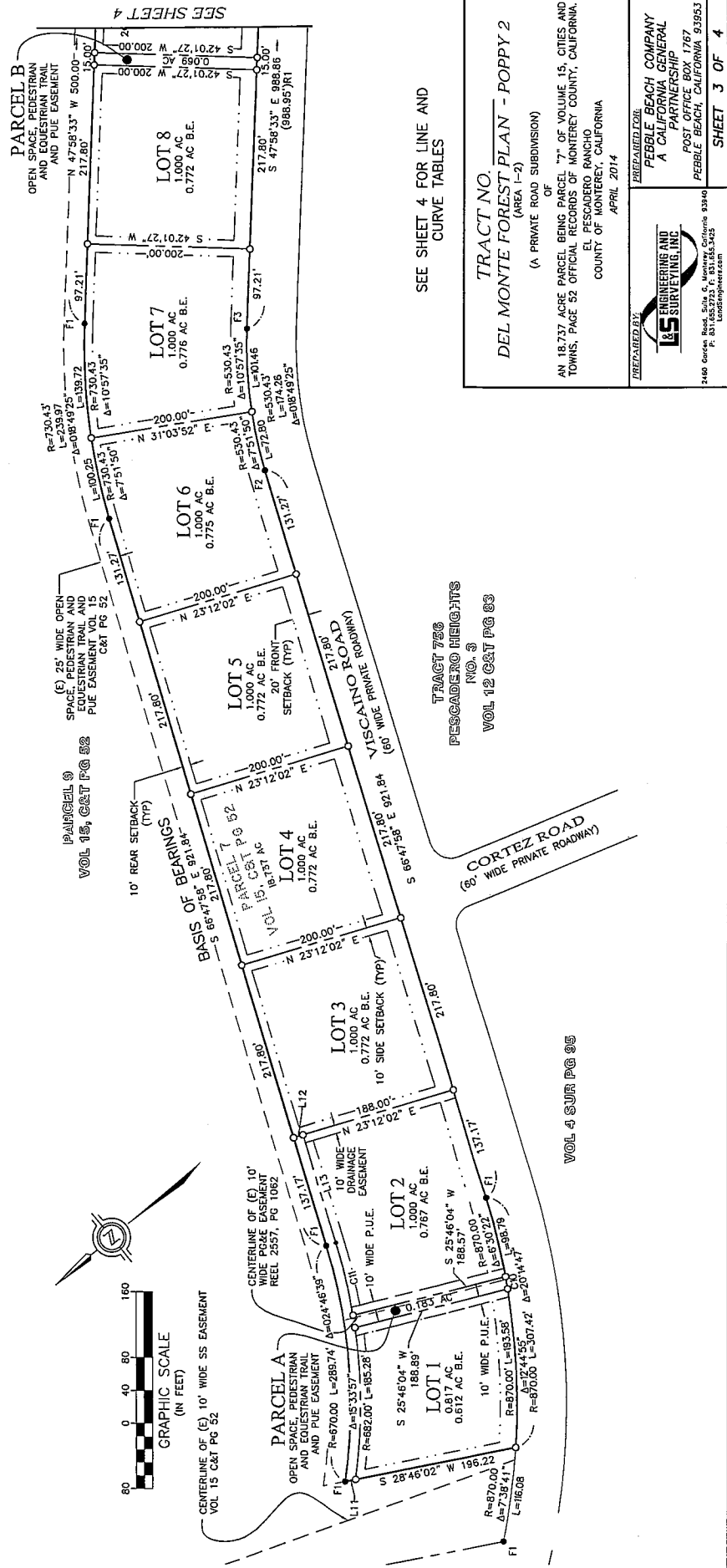
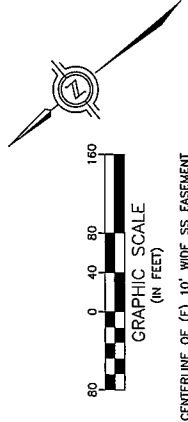
- F1= FOUND 3/4" IRON PIPE, RCE 15310, SHOWN PER VOL.15 C&T PG.52
- F2= FOUND 2"x2" HUB, LS 2257, SHOWN AS LS 2975 PER VOL.15 C&T PG.52
- F3= FOUND REBAR, NO CAP, SHOWN AS 2"x2" W/ BRASS PIN PER VOL.15 C&T PG.52
- F4= FOUND 2"x2" PER VOL.15 C&T PG.52
- F5= FOUND 2"x2", RCE 15310, SHOWN AS 2"x2" PER VOL.15 C&T PG.52
- F6= FOUND REBAR, LS 2369 PER VOL.15 C&T PG.52
- POINT USED FOR CALCULATION ONLY
- SET 1" IRON PIPE, PLS 8368 (UNLESS NOTED OTHERWISE)
- (R1) VOLUME 15, CITIES & TOWNS, PAGE 52

NOTES

1. DISTANCES SHOWN ARE IN FEET AND DECIMALS THEREOF.
2. BEARINGS AND DISTANCES SHOWN ARE BOTH RECORD AND MEASURED UNLESS NOTED OTHERWISE.

BASIS OF BEARINGS

THE BEARING OF S 66°47'58" E AS SHOWN ON THE MAP OF TRACT NO. 1003, POPPY HILLS GOLF COURSE SUBDIVISION, FILED IN VOLUME 15, PAGE 52, OF CITIES AND TOWNS, IS THE BASIS OF BEARINGS FOR THIS SURVEY.



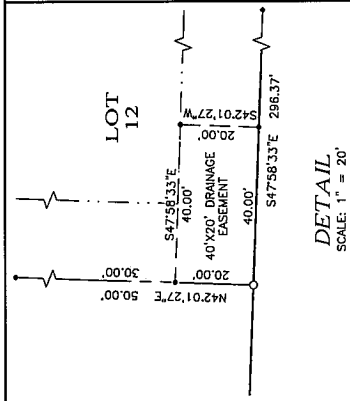
SEE SHEET 4 FOR LINE AND CURVE TABLES

TRACT NO. DEL MONTE FOREST PLAN - POPPY 2
(AREA 1-2)
(A PRIVATE ROAD SUBDIVISION)

OF
AN 18,737 ACRE PARCEL BEING PARCEL 77 OF VOLUME 15, CITIES AND TOWNS, PAGE 52 OFFICIAL RECORDS OF MONTEREY COUNTY, CALIFORNIA.
EL PESCADERO RANCHO
COUNTY OF MONTEREY, CALIFORNIA
APRIL 2014

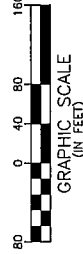
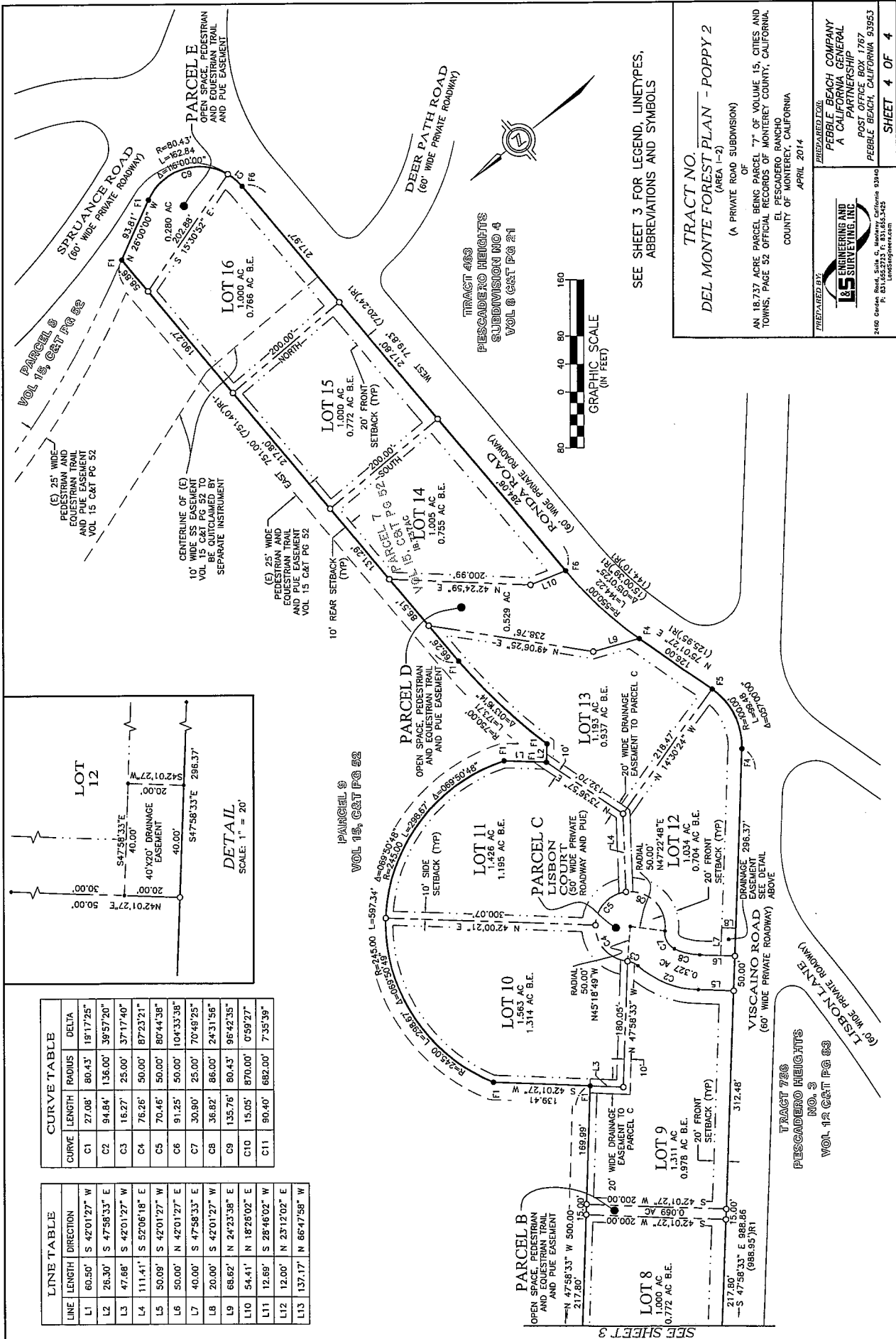
PREPARED BY:
I&S ENGINEERING AND SURVEYING, INC.
PEBBLE BEACH COMPANY
A CALIFORNIA GENERAL PARTNERSHIP
POST OFFICE BOX 1767
PEBBLE BEACH, CALIFORNIA 93953
2469 Geneva Road, Suite 5, Monterey, California 93940
P. 805.462.9922
F. 805.462.9923

SHEET 3 OF 4



CURVE TABLE			
CURVE	LENGTH	RADIUS	DELTA
C1	27.08'	80.43'	18°17'25"
C2	94.84'	136.00'	39°57'20"
C3	16.27'	25.00'	37°17'40"
C4	75.26'	50.00'	87°23'21"
C5	70.46'	50.00'	80°44'38"
C6	91.25'	50.00'	104°33'38"
C7	30.90'	25.00'	70°49'25"
C8	36.82'	86.00'	24°31'56"
C9	135.76'	80.43'	96°42'35"
C10	15.05'	870.00'	0°59'27"
C11	90.40'	682.00'	7°35'39"

LINE TABLE		
LINE	LENGTH	DIRECTION
L1	60.90'	S 42°01'27" W
L2	26.30'	S 47°58'33" E
L3	47.88'	S 42°01'27" W
L4	111.41'	S 52°06'18" E
L5	50.09'	S 42°01'27" W
L6	50.00'	N 42°01'27" E
L7	40.00'	S 47°58'33" E
L8	20.00'	S 42°01'27" W
L9	68.62'	N 24°23'38" E
L10	54.41'	N 18°28'02" E
L11	12.69'	S 28°46'02" E
L12	12.00'	N 23°12'02" E
L13	137.17'	N 66°47'58" W



SEE SHEET 3 FOR LEGEND, LINETYPES, ABBREVIATIONS AND SYMBOLS

TRACT NO.
DEL MONTE FOREST PLAN - POPPY 2
 (AREA 1-2)
 (A PRIVATE ROAD SUBMISSION)
 OF
 AN 18,737 ACRE PARCEL BEING PARCEL 77TH OF VOLUME 15, CITIES AND TOWNS, PAGE 52 OFFICIAL RECORDS OF MONTEREY COUNTY, CALIFORNIA, EL PESCADERO RANCHO COUNTY OF MONTEREY, CALIFORNIA
 APRIL 2014

PREPARED FOR:
 PEBBLE BEACH COMPANY
 A CALIFORNIA PARTNERSHIP
 POST OFFICE BOX 767
 PEBBLE BEACH, CALIFORNIA 93953

PREPARED BY:
 I&S ENGINEERING AND SURVEYING, INC.
 2480 Grande Road, Suite C, Monterey, California 93940
 P. 831.425.3425
 LINDA@IANDS.COM

SHEET 4 OF 4

SEE SHEET 3