



Ocean Hall, Suite A
2051 Inter-Garrison Road
Marina, CA 93933

Mailing Address:
100 Campus Center, Bldg. 86A
Seaside, CA 93955

831 - 502 - 3736
chshs@csumb.edu

College of Health Sciences and Human Services



Master of Science Physician Assistant Program

csumb.edu/chshs

NATIONAL DATA: Demand for PAs



PA workforce will be insufficient to meet future needs of primary care

Current number of PAs (72,000) will grow by almost 72% by 2025.

Will only provide 16% of the providers needed to address projected primary care physician shortage.

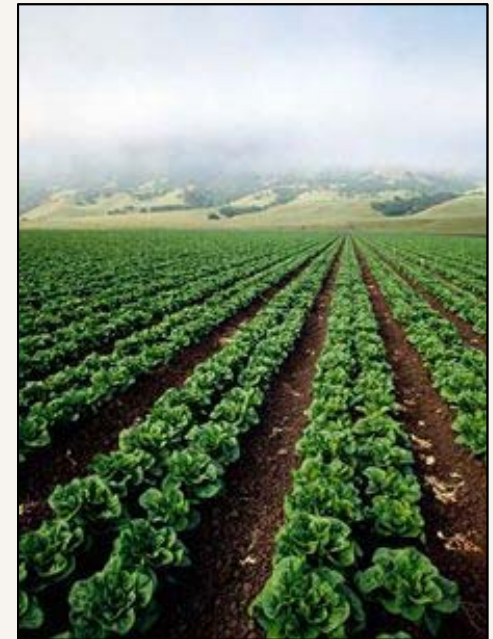
AHRQ.gov March 2012



California State University
MONTEREY BAY
Extraordinary Opportunity

Salinas Community Needs Assessment

- Total Population 150,441
- Latino Population 112,799 (75%)
- Male 76,007 (51%)
- Median Household \$ 49,840
- Poverty Rate 20.2%
- Clinician:Patient Ratio 1:60

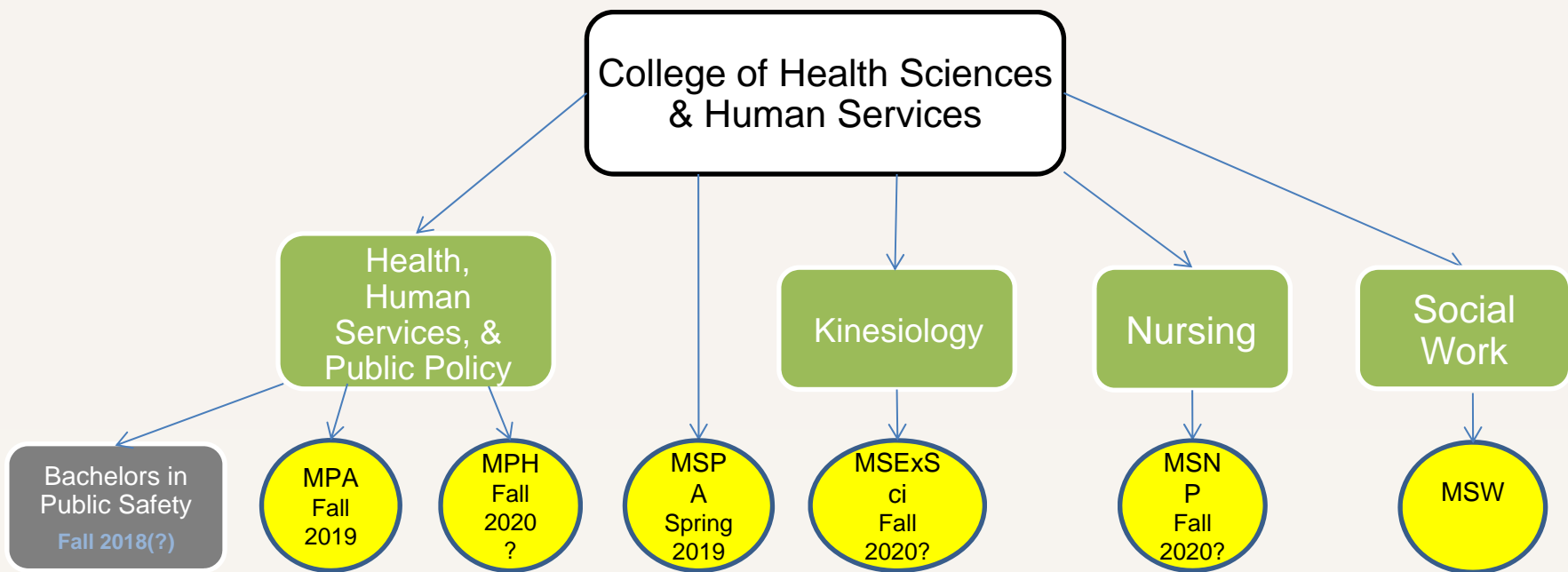


Needs Assessment: Letters of Support

- “We are currently experiencing an **unprecedented shortage** of health care providers and have found it **surprisingly difficult to recruit** health care providers into our region.”
- “Recruitment of providers is difficult at best; both **demand and turn over** are high.”
- “Having a local MSPA program at CSUMB would be an **important part of the solution** to the primary care practitioner shortage in Monterey and adjacent counties.”
- “Efforts such as this can do a great deal to ensure that we **grow our own providers** to meet the **specific needs of our clients**.”
- “The benefit of **recruiting local PA candidates** cannot be overstated.”
- “Having a PA training program **in our backyard** will do a great deal to create the health care provider **workforce** we need to support the **health status and access issues** in the tri-county.”

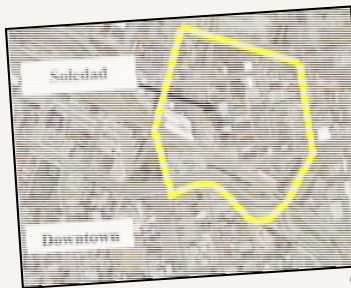


Supporting the Community through Public Health



Mission

- Educate high-quality physician assistants; commitment to excellence
- Culturally and linguistically-resonant healthcare
- Underserved communities in the tri-county region
- Informed by public health principles
- Emphasis on diversity



California State University
MONTEREY BAY
Extraordinary Opportunity

Overview

DIDACTIC EDUCATION

- 12 months
 - Topics in Medicine
 - Pharmacology
 - Physical Examination
 - Diagnostic Skills
 - Clinical Reasoning
 - Suturing, Casting
 - Medical Spanish

CLINICAL TRAINING

- 15 months (<2,000 hours)
 - Family Medicine
 - Internal Medicine
 - Pediatrics
 - Ob-Gyn
 - Emergency Medicine
 - General Surgery
 - Mental Health



Development Timeline

Accreditation Prep

7 mos

Admissions/Interviews/Prep

8 mos

First Class Year

27 mos ...

Other Activities

Program Develop Website; MDirector
Faculty Location

Conduct Interviews

Online Resources

MILESTONES



California State University
MONTEREY BAY
Extraordinary Opportunity

The Facility

- CSUMB North Campus (HEALD)
- 3 Classrooms (33-42 students)
- 2 Clinical Skills Rooms
- 8 OSCE Testing Rooms
- Green Campus
Digital: iPads/laptops
- Anatomage Table
- Library and Meal Room



Thank you for your support

- Collaboration: “Everyone’s Program”
- Financial support
- Occasional lectures from medical experts
- Sites and preceptors for PA student training
- Employment opportunities
- Reaching mutual goals



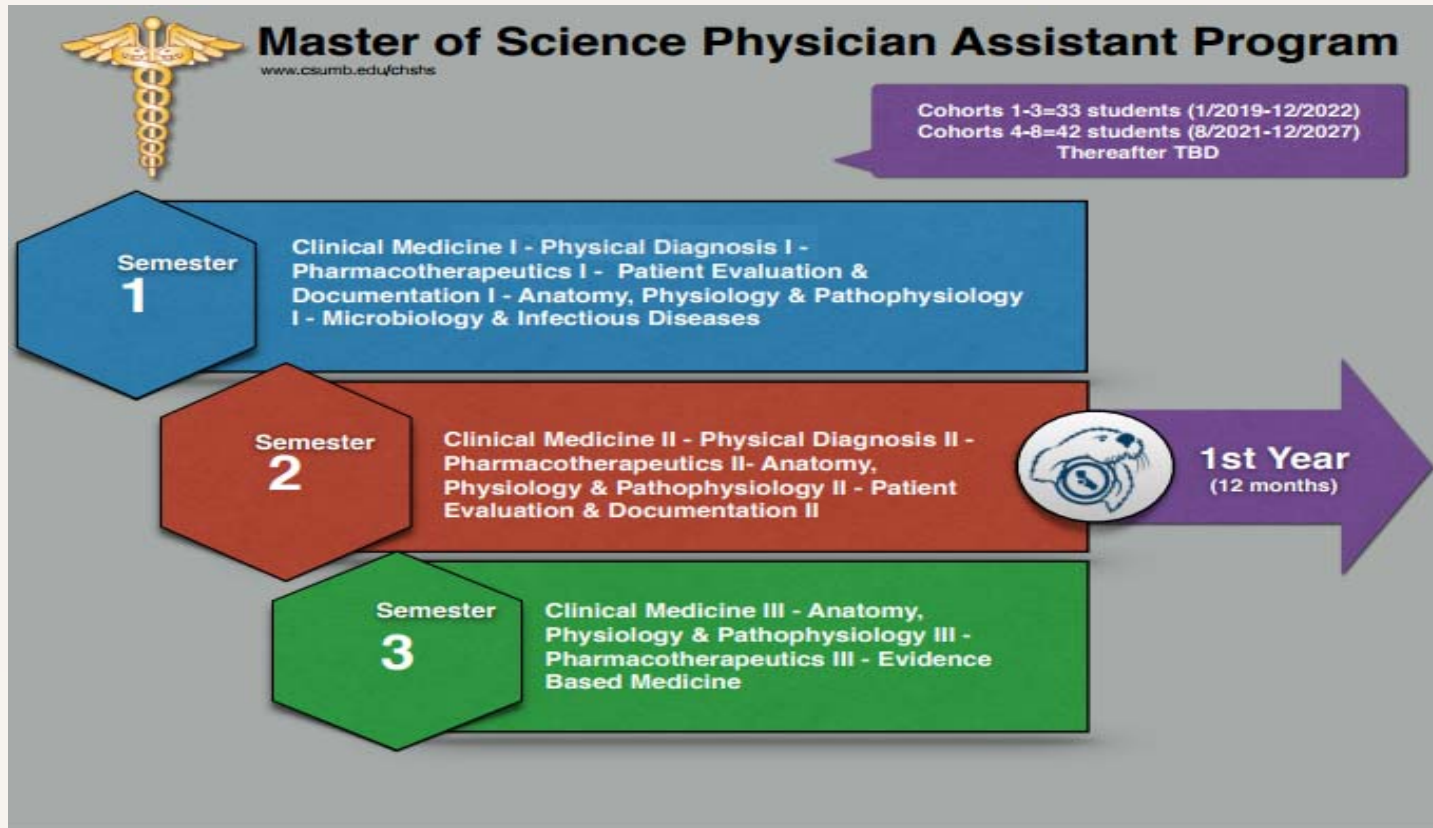
California State University
MONTEREY BAY
Extraordinary Opportunity

Q&A



California State University
MONTEREY BAY
Extraordinary Opportunity

Year One



Year Two

