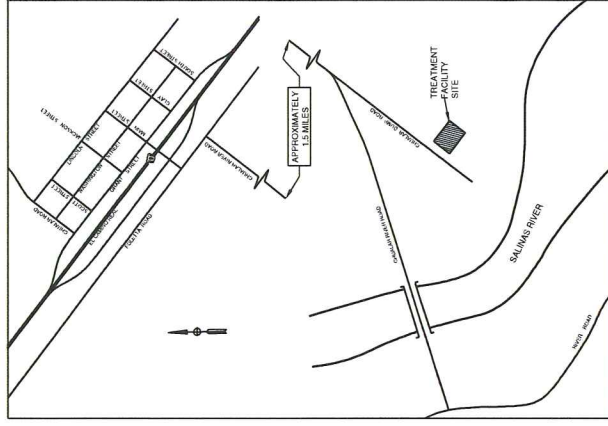


COUNTY OF MONTEREY CHUALAR MONITORING WELL REPLACEMENT PROJECT PROJECT NO. 093-46 BID NO. 10480



- SHEET INDEX**
- COVER SHEET & NOTES
 - SITE PLAN AND WELL DETAIL



VICINITY MAP
N.T.S.

NO.	REVISIONS	DATE	APPR.



Scharf & Wheeler
CONSULTING CIVIL ENGINEERS
3 Quail Run Circle, Suite 101
Salinas, CA 93907-2348
(831) 883-1848

CHUALAR MONITORING WELL
REPLACEMENT - PROJECT NO. 093-46
COVER SHEET

DATE:	3/11/14
SCALE:	AS SHOWN
DESIGN:	GMA
DRAWN:	GMA
PROJECT NO.:	10480

SHEET
1 of 2

DATE	1/22/2014
SCALE	AS SHOWN
DESIGN	GMA
DRAWN	GMA
NO. 10489	

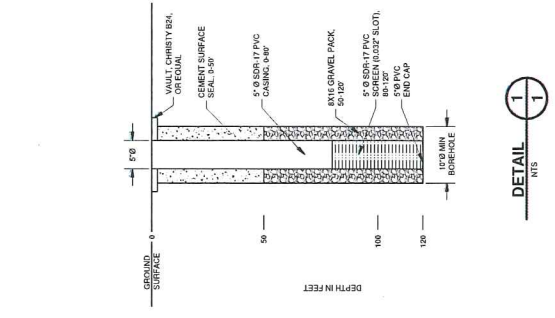
SHEET
2 OF 2

CHUALAR MONITORING WELL
REPLACEMENT - PROJECT NO. 093-46
SITE PLAN AND WELL DETAIL

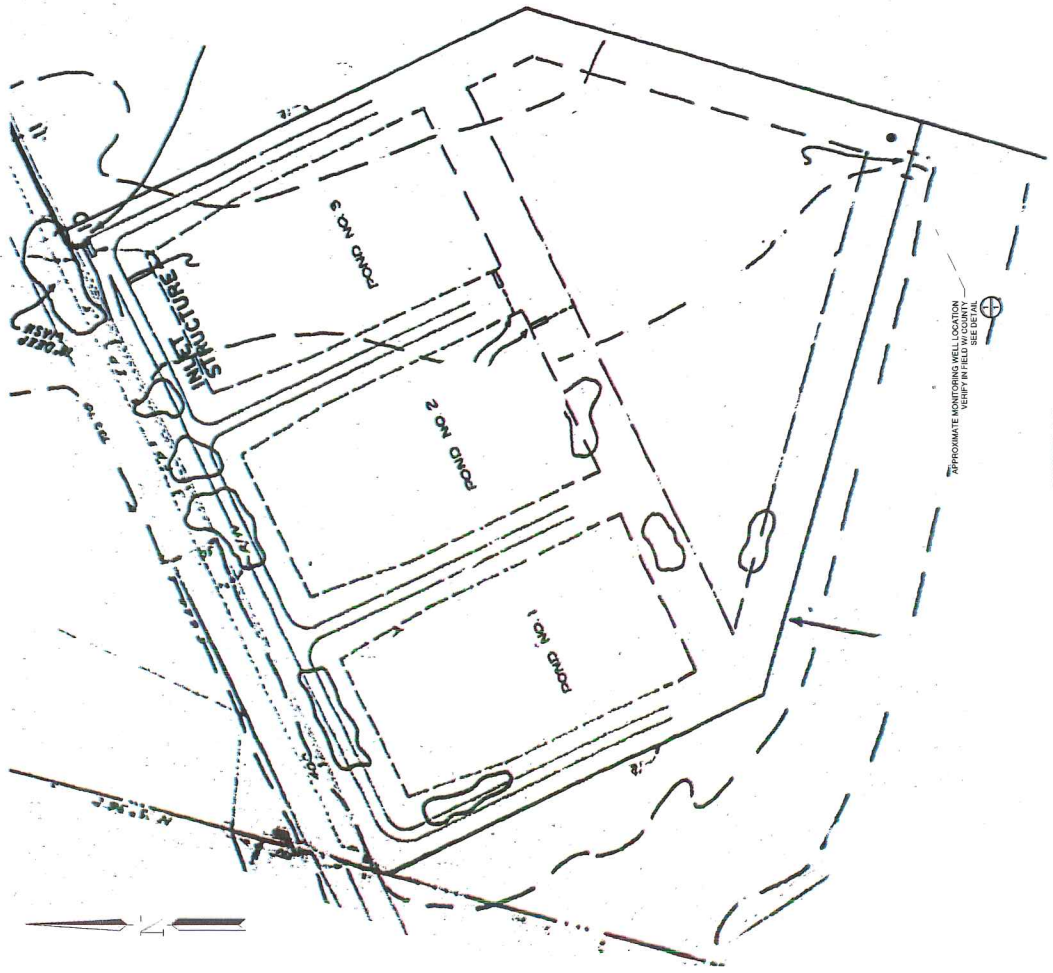
Schaf & Wheeler
CONSULTING CIVIL ENGINEERS
3 Quail Run Circle, Suite 101
Sunnyvale, CA 95097-2348
(831) 883-1848



NO.	REVISIONS	DATE	APPR.



DETAIL
1/1
WIS



SITE PLAN
NOT SCALE