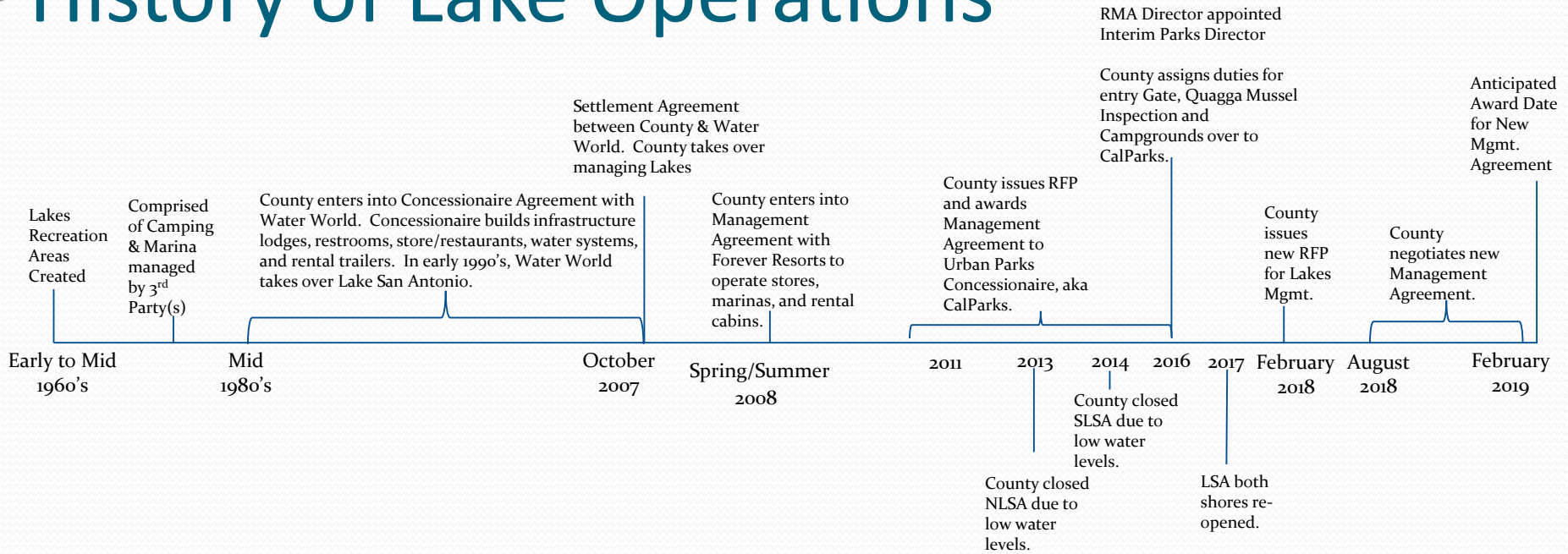


Options for Stabilizing Operations at Lake Nacimiento and Lake San Antonio

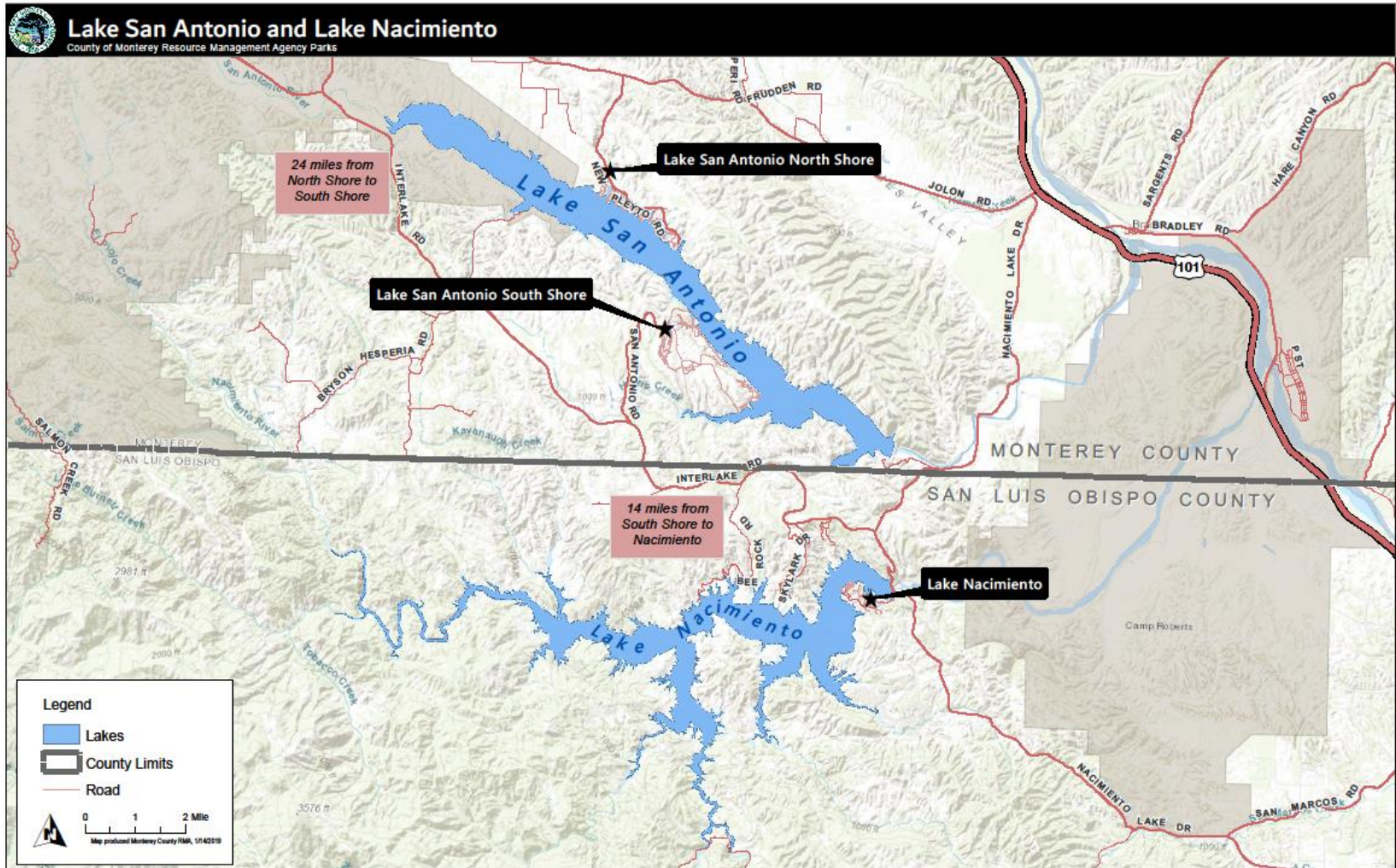
Board of Supervisors
January 15, 2019



History of Lake Operations



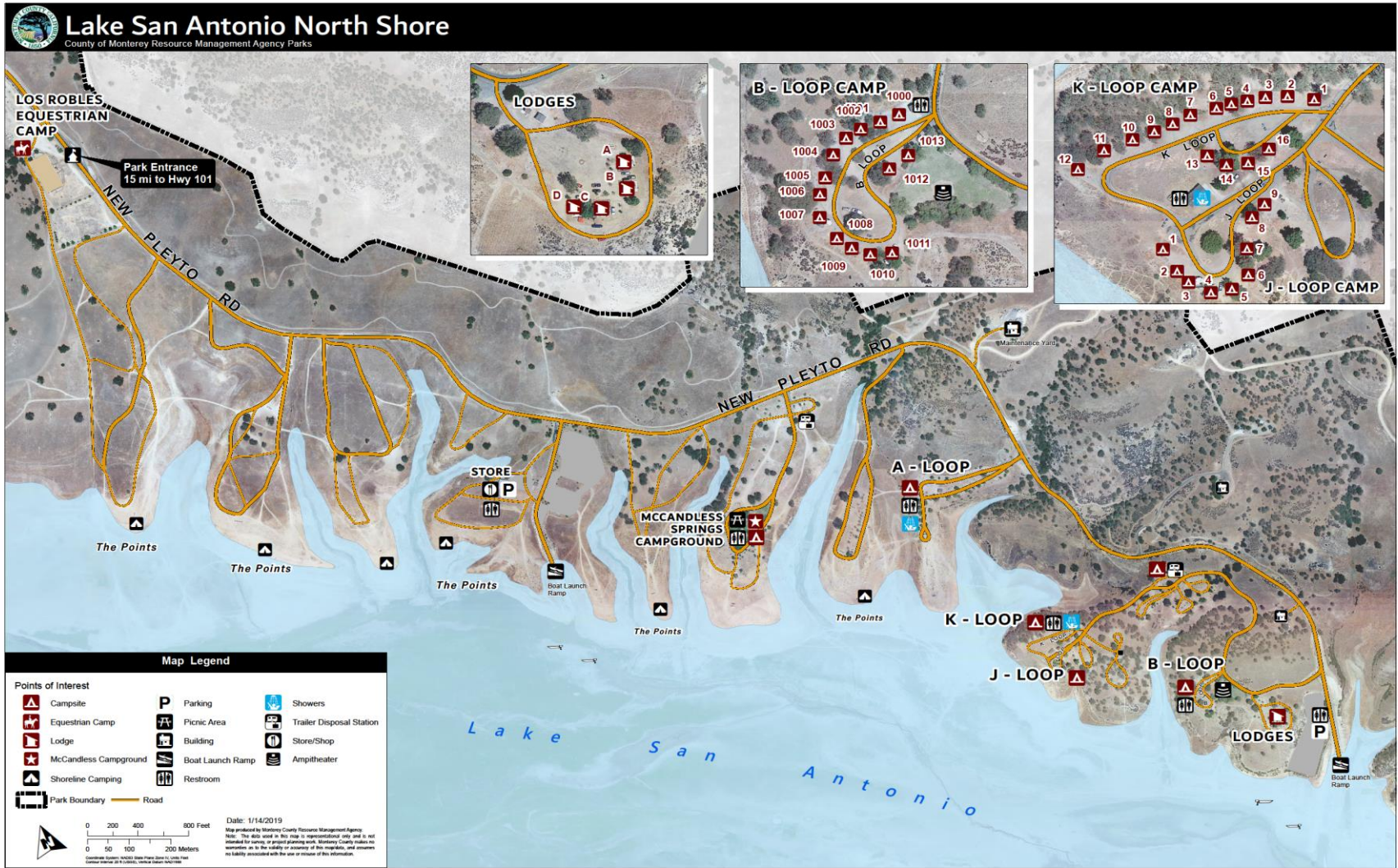
Monterey County Lake System



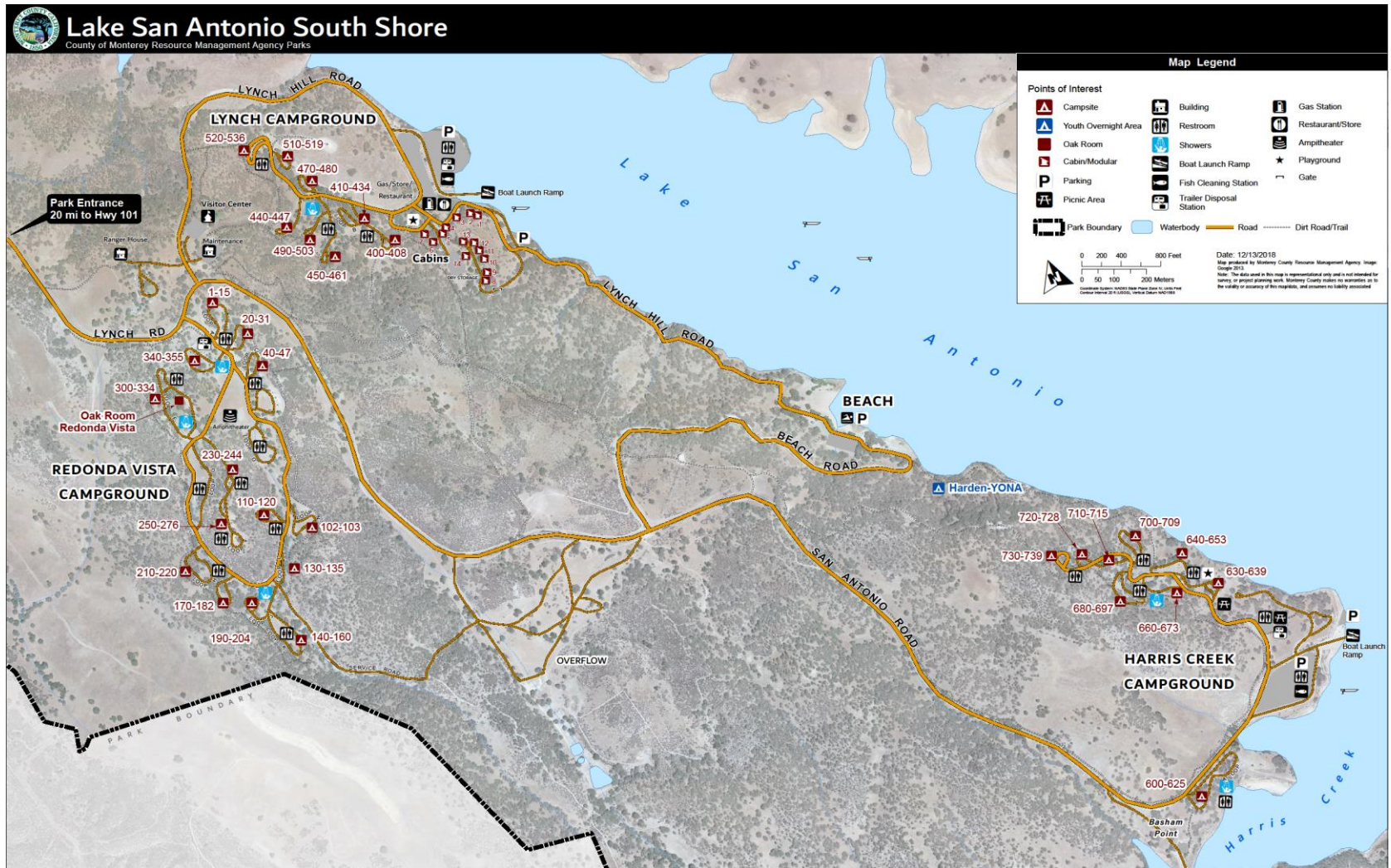
Lake Nacimiento



Lake San Antonio – North Shore



Lake San Antonio – South Shore



Options

- **Option 1: Status Quo**
 - All lakes remain under one enterprise fund and operated by outside entity as part of Management Agreement with County.
- **Option 2: Transfer LSA operation into County park system**
 - Nacimiento remains under enterprise fund and is open all year long.
 - LSA removed from enterprise fund, managed 100% by County staff, and operated as regional park with low impact activities:
 - Day Use, Camping, Boating, Fishing, Equestrian, etc
- **Option 3: 100% County Managed operation**
 - LSA operates as proposed in Option Two.
 - Nacimiento remains under enterprise fund, however, would be 100% managed by County staff.
- **Other...?**

Next Steps

- **Management Agreement**
 - Parks Ad Hoc Committee (TBD)
 - Parks Commission (2/7/19, tentative)
 - Board of Supervisors (by end of February)
- **Lakes Staffing Plan (depending on selected option)**
 - Parks Ad Hoc Committee
 - Budget Committee
 - Board of Supervisors (by March 1st)
- **Business Plan (TBD) – capital plan, operational plan, financing plan**
 - Stakeholders
 - Parks Ad Hoc Committee
 - Parks Commission
 - Board of Supervisors

Questions or Comments?

