

## Asbestos Survey Report

*County Facility*

1441 Schilling Place  
Salinas, California

Prepared For:  
County of Monterey  
Department of Public Works  
168 W. Alisal Street, 2nd Floor  
Salinas, California 93901

Prepared By:  
S Tech Consulting, LLC

Date: May 15, 2015

Project Number: 15070

Contents

|  |      |
|--|------|
| Executive Summary                                  | i    |
| Introduction                                       | 1    |
| Property Description                               | 1-2  |
| Asbestos Containing Materials                      | 3-17 |
| Summary and Recommendations                        | 18   |
| Appendix A - Site Plan & Asbestos Sample Locations |      |
| Appendix B - Asbestos Laboratory Reports           |      |

## Executive Summary

S Tech Consulting was retained by the County of Monterey Department of Public Works to conduct a survey for the presence of building materials containing asbestos at 1441 Schilling Place in the City of Salinas, California. The sprawling 200,000 square foot facility consists of two independently constructed structures, built between 1985 and 1988. At the time this assessment was conducted, preparations were in progress to transition County departments to the building. To ensure safety and maintain regulatory compliance, building materials containing asbestos must be identified prior to conducting improvements as well as for the day to day operations and maintenance of the facility.

The EPA and Cal-OSHA require the identification and communication of asbestos hazards prior to disturbing such materials during renovation, demolition, and routine maintenance. While the mere presence of asbestos in the work place does not necessarily pose a safety hazard, inadvertent disturbance or normal wear and tear can result in the creation of an airborne asbestos hazard.

This assessment was conducted to assess and sample the facility for suspect asbestos containing materials and, based upon laboratory analysis, document the presence and locations of any materials determined asbestos containing. The assessment was conducted in April and May, 2015 by Sean Tillema, a Certified Asbestos Consultant (CAC 07-4257).

This executive summary is not to be utilized as a stand-alone document. The report shall be read in its entirety. Any interpretation, use, or conclusions resulting from the data contained in this report is the responsibility of the reader.

The following conclusions were arrived at from the field investigation and laboratory analysis. See the report body and recommendations section for specific information on the items listed below and how best to proceed. Site plans and sample locations are included in Appendix 'A'. Laboratory analytical reports are provided in Appendix 'B'.

- \* Asbestos was not identified in any of the accessible, interior building materials associated with the North or South buildings.
- \* The roofing penetration, flashing, and patch mastics contain between 2%-8% Chrysotile asbestos. The material is applied over the non-asbestos roofing and appears grayish black in color, as it has weathered. Roof mastics are asphalt bound and therefore classified as Category I, Non-Friable Asbestos Containing Materials (ACM). Any disturbance of the mastics would require the work be performed by trained personnel, in correct personal protective equipment. If the mastics will be completely removed, the work must be conducted by a contractor with a Division of Occupational Health & Safety (DOSH) Asbestos License. There is approximately 2,000 square feet of material, distributed in 1-3 square foot applications, over the entire North and South Building roofs.
- \* A grayish mastic has been applied over roof mounted, metal HVAC ducting to protect the ducts from moisture intrusion. The mastic contains 10% Chrysotile asbestos and is classified as a Category I, Non-Friable ACM. There is approximately 250 square feet of mastic applied over the various HVAC ducts on the North and South Building roofs. The same compliance requirements apply to this material as noted above for the roofing mastics.
- \* While the identified asbestos containing mastics are non-friable in classification, they must be correctly managed in-place if they are to remain. The data included in this report must either be incorporated into the County of Monterey's master Asbestos Operations & Maintenance (O&M) Program or an O&M program for the buildings on the property should be developed.
- \* Should removal of the identified asbestos containing roofing and duct mastics be slated, the work should be completed under the oversight of a third party Certified Asbestos Consultant (CAC). Ambient air monitoring and clearance inspections are recommended anytime asbestos removal will occur, to ensure an airborne asbestos hazard is not created during the course of asbestos removal.
- \* Future removal of the identified asbestos containing mastics does not require notification to the Monterey Bay Unified Air Pollution Control District (MBUAPCD) due to the non-friable classification of the materials. However, all disturbance and disposal of ACM must be done so in strict compliance with MBUAPCD Rule 424 and Cal-OSHA 8 CCR 1529.

## Introduction

S Tech Consulting was retained by the County of Monterey Department of Public Works to conduct a survey for the presence of building materials containing asbestos at 1441 Schilling Place in the City of Salinas, California. The purpose of the assessment was to evaluate the presence, extent and condition of any interior, above-ground, accessible suspect asbestos materials that may be disturbed by renovations or routine building maintenance. Both the EPA and Cal-OSHA, amongst other agencies, require the identification of asbestos hazards to protect the public, workers, and the environment during day to day operations and when renovation or demolition is scheduled. The scope of work included an assessment for the following:

### Asbestos

- The performance of a pre-renovation asbestos survey inspection of the accessible areas in the demolition scope of work. The asbestos assessment was in accordance with the Monterey Bay Unified Air Pollution Control District guidelines.
- An initial investigation to locate suspect ACMs.
- Physical assessment of suspect materials.
- The collection of bulk samples from suspect ACMs.
- Laboratory analysis of collected samples.

Laboratory analysis was performed by AmeriSci Los Angeles, an independent and NVLAP accredited laboratory.

All field inspection activities were conducted by Sean Tillema, a State of California Certified Asbestos Consultant (CAC 07-4257). Field inspection activities occurred during April and May, 2015.

## Property Description

1441 Schilling Place was originally constructed as a commercial/industrial facility providing office, manufacturing, and warehouse space for the prior owner Capital One.

The property was vacated by Capital One in 2013 but has been regularly maintained during the period of no occupancy. There are two other detached buildings on the property, which were not included in the scope of this asbestos survey.

The facility is approximately 200,000 square feet in area and is made up of two independently constructed buildings joined by a common lobby. The North Building is a mostly single story structure, constructed in 1985. In 1988, the facility was expanded by the addition of the two story, South Building. The buildings share a common architectural style.

### North Building

The north building is a concrete tilt-up structure with a textured exterior finish and aluminum framed windows. The building is constructed slab on grade. The building is a mostly single story structure, with a relatively small second level used for building engineering offices and mechanical rooms. Unique to the North Building are a large warehouse, docks, and a server room.

The roof is a flat built-up bituminous system. Roofing and HVAC mastics are used extensively where leaks developed in the built-up roofing.

Interior finishes include textured or skim coated drywall walls, carpeting, vinyl floor tile, linoleum, and ceramic tile. Suspended ceiling cover the majority of the interior space. Above the ceilings are the mechanical systems, including HVAC metal and flex duct, fiberglass insulation, chiller lines, electrical conduit, and data lines.



**Property Description - continued**

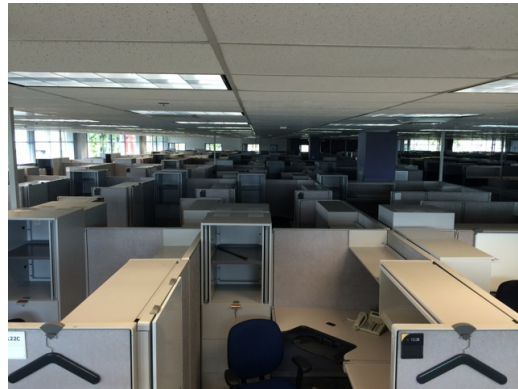
South Building

The South Building is a two story steel framed structure, with exterior stucco siding and curtain wall glass. The primary usage of the South Building is office space. Unique to the South Building is a large cafeteria and gymnasium.

The roof is a flat built-up bituminous system. The roof is a flat built-up bituminous system. Roofing and HVAC mastics are used extensively where leaks developed in the built-up roofing.

Interior finishes include textured or skim coated drywall walls. Flooring includes ceramic tile, carpeting, vinyl floor tile, linoleum, and thick sheet flooring. Suspended ceiling cover the majority of the interior space. Above the ceilings are the mechanical systems, including HVAC metal and flex duct, fiberglass insulation, chiller lines, electrical conduit, and data lines.

**Typical Building Environments**



## Asbestos Containing Materials

Asbestos-containing material (ACM) is defined by the Federal Environmental Protection Agency (EPA) as material containing **more than one percent asbestos** as determined by Polarized Light Microscopy (PLM), however, the California Department of Occupational Safety and Health (CalOSHA) classifies any material having greater than one tenth of one percent (>0.1%) asbestos as Asbestos-Containing Construction Material (ACCM). In combination, the EPA and OSHA requirements govern the testing, handling and disposal of materials containing asbestos.

The EPA's National Emission Standards for Hazardous Air Pollutants or NESHAP regulations dictate requirements for activities involving renovation and demolition of buildings containing asbestos. In Monterey, Santa Cruz, and San Benito Counties, the NESHAP regulations are administered and enforced by the Monterey Bay Unified Area Pollution Control District (MBUAPCD). Outlined in the NESHAP regulations, [40 CFR 61, Subpart M](#), are categories for each asbestos containing material (ACM, >1%) based on friability or the potential for a material to become friable. The word 'Friability' refers to a material's likeliness to release airborne fibers in-situ, or under mechanical pressure.

At the time of the asbestos survey, a material may be classified as non-friable in its undisturbed state but may be rendered friable from damage or during removal phase based on the method of removal. For example, the usage of mechanical removal methods (floor buffers, floor chippers, grinders, saws, heavy equipment) will likely create a friable waste stream. Friable materials, or non-friable materials rendered friable, are referred to as 'Regulated Asbestos Containing Material' (RACM). These materials require notification to the local air quality management district (AQMD) or air pollution control district (APCD), prior to asbestos removal occurring.

Non-friable materials are divided into two categories; Category I Non-Friable ACM and Category II Non-Friable ACM. The categories relate to the type of material and their likelihood for becoming friable when disturbed. *This report identifies materials in their state at the time of the survey. There is no way to predict what particular removal method a contractor may choose to employ and how that may impact the friability of the material being removed.*

OSHA has its own classifications for asbestos and work related to asbestos. Cal-OSHA requires a State of California Division of Occupational Safety & Health (DOSH) registered asbestos contractor to perform removal work when a material has greater than 0.1% asbestos (ACCM). Trace asbestos, falling below classification as either ACM or ACCM are referred to as 'Unclassified Asbestos'. Materials containing any asbestos are regulated to some extent under [8 CCR 1529](#), to ensure precaution are implemented to avoid unnecessary exposure to asbestos.

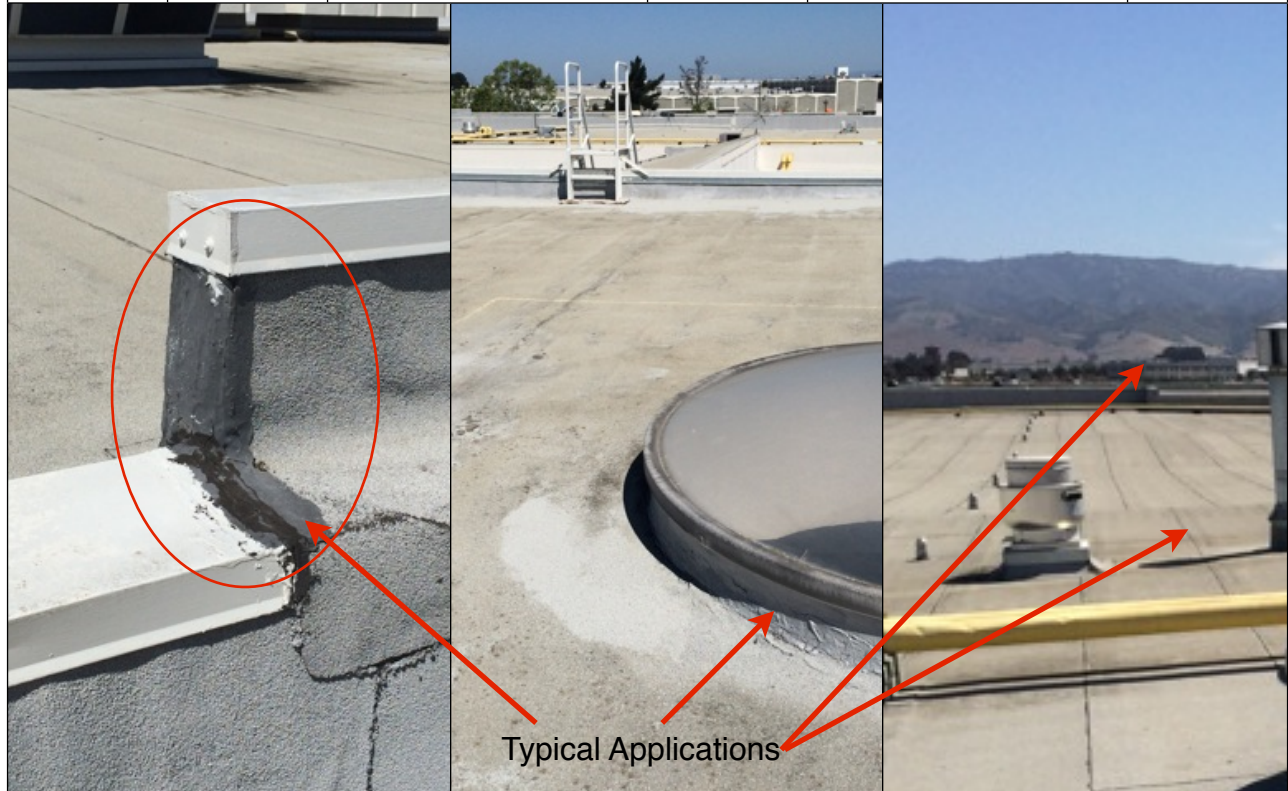
Prior to the asbestos sampling, a visual assessment of the suspect building materials was completed. During the visual assessment, the building materials suspected of containing asbestos were categorized by homogeneous areas. Materials are classified as homogenous when they appear uniform, have a consistent texture and appear to have been installed at the same time.

The laboratory testing for the bulk samples was conducted in accordance with the recommended EPA Interim Method for Determination of Asbestos in Bulk Samples (EPA-600/R-93/116, July 1993). All bulk samples were submitted to Amerisci - Los Angeles, a NVLAP accredited laboratory. Samples were analyzed on a standard turnaround, unless otherwise noted in the chain of custody in Appendix 'B'. A total of one hundred thirteen bulk samples were collected from the areas in the scope of work for the project. At the laboratory, the samples were further separated into one hundred fifty-one individual materials for analysis.

**The following page provides a summary of each material found to contain asbestos at the site. The summary table is followed by tables listing all samples collected. Samples are plotted on site plans in Appendix 'A'. Laboratory analytical reports are provided in Appendix 'B'.**

**Asbestos Containing Materials - continued**

| <b>A s b e s t o s   S u m m a r y   T a b l e</b> |                          |   |                           |                             |  |
|--|--------------------------|---|---------------------------|-----------------------------|--|
| <b>Asbestos Material</b>                           | <b>Facility Location</b> | <b>Locations</b>  | <b>Analytical Results</b> | <b>Classification</b>       | <b>Quantity</b>                            |
| Roofing Mastic Penetration, Flashing, Patch        | North / South Roofs      | Distributed over many locations of roofing where patches have been made, penetrations, flashing and parapet seams | 2%-8% Chrysotile          | Category I, Non-Friable ACM | 2,000 SF dispersed over multiple locations |



484-b washington street monterey, ca 939 40 # 401 / p 831 883 8415 / f 877 984 5495 / info@stechconsulting.com / stechconsulting.com

**Asbestos Containing Materials - continued**

| <b>Asbestos Summary Table</b> |                          |   |                           |                             |  |
|-------------------------------|--------------------------|---|---------------------------|-----------------------------|--|
| <b>Asbestos Material</b>      | <b>Facility Location</b> | <b>Locations</b>  | <b>Analytical Results</b> | <b>Classification</b>       | <b>Quantity</b>                          |
| HVAC Seam Mastic              | North / South Roofs      | <p>Various roof locations where roof mounted HVAC metal ducting is present.</p> <p>Note: Heavily applied on ducting adjacent to cooling tower</p> | 10% Chrysotile            | Category I, Non-Friable ACM | 250 SF dispersed over multiple locations |





**Asbestos Containing Materials - continued**

The following table is a listing of all suspect asbestos containing materials collected from the site. Items containing asbestos are identified in **RED**. See Appendix B for the full analytical reports.

| <b>A s b e s t o s   B u l k   S a m p l e   T a b l e</b> |  |                              |   |  |
|--|--|------------------------------|---|--|
| <b>Sample Number</b>                                       | <b>Material Sampled</b>                            | <b>Area</b>                  | <b>Sample Location</b>                      | <b>Analytical Results<br/>NAD=No Asbestos Detected</b> |
| 001  | Cove Base - Grey w/ Brown Mastic                   | South Building Floor 1 (SB1) | Restrooms / Water Heater Room - Ceiling     | NAD  |
| 002  | Ceiling Tile - 2' x 4'                             | SB1                          | SB2   | NAD  |
| 003  | Carpet Glue - Orange / Yellow                      | SB1                          | Modular Dock Office                         | NAD  |
| 004  | Cove Base - Olive w/ Brown Mastic                  | SB1                          | Modular Returns Office                      | NAD  |
| 005  | Drywall / Joint Compound                           | SB1                          | Modular Returns Office                      | NAD  |
| 006  | Drywall / Texture                                  | SB1                          | Modular Shipping Office Ceiling             | NAD  |
| 007  | Vinyl Floor Tile - 12" x 12" White w/ Black Mastic | SB1                          | North Partition Wall - Near Loading Dock    | NAD  |
| 008  | Vinyl Floor Tile - 12" x 12" Grey w/ Black Mastic  | SB1                          | North Partition Wall - Near Warehouse 22    | NAD  |
| 009  | Drywall / Joint Compound                           | SB1                          | North Partition Wall - Rear of Warehouse 22 | NAD  |
| 010  | Drywall / Heavy Texture                            | SB1                          | Training Classroom                          | NAD  |

484-b washington street monterey, ca 93940 # 401 / p 831 883 8415 / f 877 984 5495 / info@stechconsulting.com / stechconsulting.com

**Asbestos Containing Materials - continued**

The following table is a listing of all suspect asbestos containing materials collected from the site. Items containing asbestos are identified in **RED**. See Appendix B for the full analytical reports.

| <b>A s b e s t o s   B u l k   S a m p l e   T a b l e</b> |   |             |   |  |
|--|---|-------------|---|--|
| <b>Sample Number</b>                                       | <b>Material Sampled</b>                               | <b>Area</b> | <b>Sample Location</b>                      | <b>Analytical Results<br/>NAD=No Asbestos Detected</b> |
| 011  | Ceiling Tile - 2' x 4'                                | SB1         | Restrooms / Water Heater Room - Ceiling     | NAD  |
| 012  | Joint Compound  | SB1         | Modular Dock Office                         | NAD  |
| 013  | Ceiling Tile - 2' x 4'                                | SB1         | Modular Dock Office                         | NAD  |
| 014  | Cove Base - Olive w/ Brown Mastic                     | SB1         | Modular Returns Office                      | NAD  |
| 015  | Carpet Glue - Brown                                   | SB1         | Modular Returns Office                      | NAD  |
| 016  | Drywall / Joint Compound                              | SB1         | Modular Shipping Office Ceiling             | NAD  |
| 017  | Drywall / Texture                                     | SB1         | North Partition Wall - Near Loading Dock    | NAD  |
| 018  | Cove Base - Grey w/ Brown Mastic                      | SB1         | North Partition Wall - Near Warehouse 22    | NAD  |
| 019  | Vinyl Floor Tile - 12" x 12"<br>White w/ Black Mastic | SB1         | North Partition Wall - Rear of Warehouse 22 | NAD  |
| 020  | Vinyl Floor Tile - 12" x 12"<br>Grey w/ Black Mastic  | SB1         | Training Classroom                          | NAD  |

**Asbestos Containing Materials - continued**

The following table is a listing of all suspect asbestos containing materials collected from the site. Items containing asbestos are identified in **RED**. See Appendix B for the full analytical reports.

| <b>A s b e s t o s   B u l k   S a m p l e   T a b l e</b> |  |             |   |  |
|--|--|-------------|---|--|
| <b>Sample Number</b>                                       | <b>Material Sampled</b>                | <b>Area</b> | <b>Sample Location</b>                      | <b>Analytical Results<br/>NAD=No Asbestos Detected</b> |
| 021  | Ceiling Tile - 2' x 4'                 | SB1         | Restrooms / Water Heater Room - Ceiling     | NAD  |
| 022  | Drywall / Joint Compound               | SB1         | Modular Dock Office                         | NAD  |
| 023  | Drywall / Skim Coat                    | SB1         | Modular Dock Office                         | NAD  |
| 024  | Drywall / Joint Compound               | SB1         | Modular Returns Office                      | NAD  |
| 025  | Drywall / Heavy Texture                | SB1         | Modular Returns Office                      | NAD  |
| 026  | Ceiling Tile - 2' x 2' - Swirl Pattern | SB1         | Modular Shipping Office Ceiling             | NAD  |
| 027  | Ceiling Tile - 2' x 2' - Swirl Pattern | SB1         | North Partition Wall - Near Loading Dock    | NAD  |
| 028  | Ceiling Tile - 2' x 2' - Swirl Pattern | SB1         | North Partition Wall - Near Warehouse 22    | NAD  |
| 029  | Cove Base - Black w/ Cream Mastic      | SB1         | North Partition Wall - Rear of Warehouse 22 | NAD  |
| 030  | Cooler Caulking                        | SB1         | Training Classroom                          | NAD  |

484-b washington street monterey, ca 93940 # 401 / p 831 883 8415 / f 877 984 5495 / info@stechconsulting.com / stechconsulting.com

**Asbestos Containing Materials - continued**

The following table is a listing of all suspect asbestos containing materials collected from the site. Items containing asbestos are identified in **RED**. See Appendix B for the full analytical reports.

| <b>A s b e s t o s   B u l k   S a m p l e   T a b l e</b> |  |                              |   |  |
|--|--|------------------------------|---|--|
| <b>Sample Number</b>                                       | <b>Material Sampled</b>                    | <b>Area</b>                  | <b>Sample Location</b>                      | <b>Analytical Results<br/>NAD=No Asbestos Detected</b> |
| 031  | Cooler Insulation                          | SB1                          | Restrooms / Water Heater Room - Ceiling     | NAD  |
| 032  | Linoleum - Grey Speckle                    | SB1                          | Modular Dock Office                         | NAD  |
| 033  | TSI - Outer Wrap & Insulation (Fiberglass) | SB1                          | Modular Dock Office                         | NAD  |
| 034  | Chiller Equipment Insulation - Black       | SB1                          | Modular Returns Office                      | NAD  |
| 035  | Chiller Pipe Insulation & Wrap             | SB1                          | Modular Returns Office                      | NAD  |
| 036  | Drywall / Joint Compound / Tape            | SB1                          | Modular Shipping Office Ceiling             | NAD  |
| 037  | Drywall / Joint Compound                   | North Building Floor 1 (NB1) | North Partition Wall - Near Loading Dock    | NAD  |
| 038  | Drywall / Skim Coat                        | NB1                          | North Partition Wall - Near Warehouse 22    | NAD  |
| 039  | Cove Base - Black w/ Cream Mastic          | NB1                          | North Partition Wall - Rear of Warehouse 22 | NAD  |
| 040  | Carpet Glue - Orange / Yellow              | NB1                          | Training Classroom                          | NAD  |

**Asbestos Containing Materials - continued**

The following table is a listing of all suspect asbestos containing materials collected from the site. Items containing asbestos are identified in **RED**. See Appendix B for the full analytical reports.

| <b>A s b e s t o s   B u l k   S a m p l e   T a b l e</b> |   |             |   |  |
|--|---|-------------|---|--|
| <b>Sample Number</b>                                       | <b>Material Sampled</b>                   | <b>Area</b> | <b>Sample Location</b>                      | <b>Analytical Results<br/>NAD=No Asbestos Detected</b> |
| 041  | Ceiling Tile - 2' x 4'                    | NB1         | Restrooms / Water Heater Room - Ceiling     | NAD  |
| 042  | Drywall / Joint Compound - No Paint       | NB1         | Modular Dock Office                         | NAD  |
| 043  | Cove Base - Olive w/ Cream Mastic         | NB1         | Modular Dock Office                         | NAD  |
| 044  | Drywall / Joint Compound                  | NB1         | Modular Returns Office                      | NAD  |
| 045  | Drywall / Texture - Splatter Pattern      | NB1         | Modular Returns Office                      | NAD  |
| 046  | Ceiling Tile - 2' x 4', Smooth            | NB1         | Modular Shipping Office Ceiling             | NAD  |
| 047  | Ceiling Tile - 2' x 4', Worm Hole Pattern | NB1         | North Partition Wall - Near Loading Dock    | NAD  |
| 048  | Ceiling Tile - 2' x 4', Worm Hole Pattern | NB1         | North Partition Wall - Near Warehouse 22    | NAD  |
| 049  | Ceiling Tile - 2' x 4', Worm Hole Pattern | NB1         | North Partition Wall - Rear of Warehouse 22 | NAD  |
| 050  | Drywall / Joint Compound                  | NB1         | Training Classroom                          | NAD  |

484-b washington street monterey, ca 93940 #401 / p 831 883 8415 / f 877 984 5495 / info@stechconsulting.com / stechconsulting.com

**Asbestos Containing Materials - continued**

The following table is a listing of all suspect asbestos containing materials collected from the site. Items containing asbestos are identified in **RED**. See Appendix B for the full analytical reports.

| <b>A s b e s t o s   B u l k   S a m p l e   T a b l e</b> |  |             |   |  |
|--|--|-------------|---|--|
| <b>Sample Number</b>                                       | <b>Material Sampled</b>                              | <b>Area</b> | <b>Sample Location</b>                      | <b>Analytical Results<br/>NAD=No Asbestos Detected</b> |
| 051  | Drywall / Skim Coat                                  | NB1         | Restrooms / Water Heater Room - Ceiling     | NAD  |
| 052  | Vinyl Floor Tile - 12" x 12",<br>Grey w/ Yellow Glue | NB1         | Modular Dock Office                         | NAD  |
| 053  | Vinyl Floor Tile - 12" x 12",<br>Grey w/ Glue        | NB1         | Modular Dock Office                         | NAD  |
| 054  | Cove Base - Olive w/ Mastic                          | NB1         | Modular Returns Office                      | NAD  |
| 055  | Drywall / Joint Compound                             | NB1         | Modular Returns Office                      | NAD  |
| 056  | Ceiling Panel - Exposed Fiber<br>Style               | NB1         | Modular Shipping Office Ceiling             | NAD  |
| 057  | Drywall / Joint Compound                             | NB1         | North Partition Wall - Near Loading Dock    | NAD  |
| 058  | Linoleum - Brown / Tan                               | NB1         | North Partition Wall - Near Warehouse 22    | NAD  |
| 059  | Drywall / Joint Compound                             | NB1         | North Partition Wall - Rear of Warehouse 22 | NAD  |
| 060  | Drywall / Skim Coat                                  | NB1         | Training Classroom                          | NAD  |

**Asbestos Containing Materials - continued**

The following table is a listing of all suspect asbestos containing materials collected from the site. Items containing asbestos are identified in **RED**. See Appendix B for the full analytical reports.

| <b>A s b e s t o s   B u l k   S a m p l e   T a b l e</b> |   |             |   |  |
|--|---|-------------|---|--|
| <b>Sample Number</b>                                       | <b>Material Sampled</b>                               | <b>Area</b> | <b>Sample Location</b>                      | <b>Analytical Results<br/>NAD=No Asbestos Detected</b> |
| 061  | Gypcrete Underlayment                                 | NB1         | Restrooms / Water Heater Room - Ceiling     | NAD  |
| 062  | TSI / Wrap  | NB1         | Modular Dock Office                         | NAD  |
| 063  | Drywall / Heavy Texture                               | NB1         | Modular Dock Office                         | NAD  |
| 064  | Vinyl Floor Tile - 12" x 12"<br>Beige w/ Black Mastic | NB1         | Modular Returns Office                      | NAD  |
| 065  | Concealed Vinyl Floor Tile w/<br>Black Mastic         | NB1         | Modular Returns Office                      | NAD  |
| 066  | Drywall / Joint Compound                              | NB1         | Modular Shipping Office Ceiling             | NAD  |
| 067  | Drywall / Skim Coat                                   | NB1         | North Partition Wall - Near Loading Dock    | NAD  |
| 068  | Cove Base - Green w/ Cream<br>Mastic                  | NB1         | North Partition Wall - Near Warehouse 22    | NAD  |
| 069  | Ceiling Tile - 2' x 2'                                | NB1         | North Partition Wall - Rear of Warehouse 22 | NAD  |
| 070  | HVAC Duct Seam Tape and<br>Mastic - White             | NB1         | Training Classroom                          | NAD  |

484-b washington street monterey, ca 93940 # 401 / p 831 883 8415 / f 877 984 5495 / info@stechconsulting.com / stechconsulting.com

**Asbestos Containing Materials - continued**

The following table is a listing of all suspect asbestos containing materials collected from the site. Items containing asbestos are identified in **RED**. See Appendix B for the full analytical reports.

| <b>A s b e s t o s   B u l k   S a m p l e   T a b l e</b> |  |                                    |   |  |
|--|--|------------------------------------|---|--|
| <b>Sample Number</b>                                       | <b>Material Sampled</b>                              | <b>Area</b>                        | <b>Sample Location</b>                      | <b>Analytical Results<br/>NAD=No Asbestos<br/>Detected</b> |
| 071  | Drywall / Joint Compound                             | NB1                                | Restrooms / Water Heater Room - Ceiling     | NAD  |
| 072  | Vinyl Floor Tile - 12" x 12" Tan<br>w/ White Streaks | NB1                                | Modular Dock Office                         | NAD  |
| 073  | Drywall / Joint Compound -<br>No Paint               | North Building<br>Floor 2 (NB2)    | Modular Dock Office                         | NAD  |
| 074  | Stucco w/ White Texture                              | NB2                                | Modular Returns Office                      | NAD  |
| 075  | Stucco Vapor Barrier                                 | NB2                                | Modular Returns Office                      | NAD  |
| 076  | TSI - White  | NB2                                | Modular Shipping Office Ceiling             | NAD  |
| 077  | Drywall / Texture                                    | NB2                                | North Partition Wall - Near Loading Dock    | NAD  |
| 078  | Ceiling Tile - 2' x 2'                               | NB1                                | North Partition Wall - Near Warehouse 22    | NAD  |
| 079  | Drywall / Joint Compound                             | South<br>Building Floor<br>2 (SB2) | North Partition Wall - Rear of Warehouse 22 | NAD  |
| 080  | Drywall / Texture                                    | SB2                                | Training Classroom                          | NAD  |



**Asbestos Containing Materials - continued**

The following table is a listing of all suspect asbestos containing materials collected from the site. Items containing asbestos are identified in **RED**. See Appendix B for the full analytical reports.

| <b>A s b e s t o s   B u l k   S a m p l e   T a b l e</b> |  |                |   |  |
|--|--|----------------|---|--|
| <b>Sample Number</b>                                       | <b>Material Sampled</b>                                  | <b>Area</b>    | <b>Sample Location</b>                      | <b>Analytical Results<br/>NAD=No Asbestos Detected</b> |
| 081  | Ceiling Tile - 2' x 4'                                   | SB2            | Restrooms / Water Heater Room - Ceiling     | NAD  |
| 082  | Drywall / Joint Compound / Tape                          | SB2            | Modular Dock Office                         | NAD  |
| 083  | Vinyl Floor Tile - 12" x 12"<br>Grey w/ Black Mastic     | SB2            | Modular Dock Office                         | NAD  |
| 084  | Drywall / Joint Compound                                 | SB2            | Modular Returns Office                      | NAD  |
| 085  | Ceiling Tile - 2' x 4'                                   | SB2            | Modular Returns Office                      | NAD  |
| 086  | Vinyl Sheet Flooring - Thick w/<br>Raised Circle Pattern | SB1/SB2        | Modular Shipping Office Ceiling             | NAD  |
| 087  | Stucco   | South Building | North Partition Wall - Near Loading Dock    | NAD  |
| 088  | Stucco   | South Building | North Partition Wall - Near Warehouse 22    | NAD  |
| 089  | Stucco   | North Building | North Partition Wall - Rear of Warehouse 22 | NAD  |
| 090  | Stucco   | North Building | Training Classroom                          | NAD  |

484-b washington street monterey, ca 93940 #401 / p 831 883 8415 / f 877 984 5495 / info@stechconsulting.com / stechconsulting.com

**Asbestos Containing Materials - continued**

The following table is a listing of all suspect asbestos containing materials collected from the site. Items containing asbestos are identified in **RED**. See Appendix B for the full analytical reports.

| <b>A s b e s t o s   B u l k   S a m p l e   T a b l e</b> |                                     |                |   |  |
|--|-------------------------------------|----------------|---|--|
| <b>Sample Number</b>                                       | <b>Material Sampled</b>             | <b>Area</b>    | <b>Sample Location</b>                  | <b>Analytical Results<br/>NAD=No Asbestos Detected</b> |
| 091  | Caulking - Exterior Expansion Joint | North Building | Restrooms / Water Heater Room - Ceiling | NAD  |
| 092  | Stucco                              | South Building | Modular Dock Office                     | NAD  |
| 093  | Stucco Vapor Barrier                | South Building | Modular Dock Office                     | NAD  |
| 094  | Roof Core - Built Up Roofing        | South Building | Roof                                    | NAD  |
| 095  | Roof Insulation                     | South Building | Roof - Under 094                        | NAD  |
| 096  | Penetration Mastic                  | South Building | Roof                                    | 3% Chrysotile  |
| 097  | Roof Patch - Silver                 | South Building | Roof - Around Drainage Inlet            | NAD  |
| 098  | Caulking - Beige                    | South Building | Exterior Penthouse Siding               | NAD  |
| 099  | HVAC Seam Mastic - Light            | South Building | Roof Mounted HVAC Ducting               | NAD  |
| 100  | Flashing Mastic                     | South Building | Lobby Skylight                          | 2% Chrysotile  |

484-b washington street monterey, ca 93940 # 401 / p 831 883 8415 / f 877 984 5495 / info@stechconsulting.com / stechconsulting.com

**Asbestos Containing Materials - continued**

The following table is a listing of all suspect asbestos containing materials collected from the site. Items containing asbestos are identified in **RED**. See Appendix B for the full analytical reports.

| <b>A s b e s t o s   B u l k   S a m p l e   T a b l e</b> |                                   |                |  |  |
|--|-----------------------------------|----------------|--|--|
| <b>Sample Number</b>                                       | <b>Material Sampled</b>           | <b>Area</b>    | <b>Sample Location</b>   | <b>Analytical Results<br/>NAD=No Asbestos Detected</b> |
| 101  | HVAC Mastic - Grey                | South Building | Roof Mounted HVAC - Ducting, Heavy Application of Mastics Due To Leaks | 10% Chrysotile   |
| 102  | Penetration Coating - White       | South Building | Roof - Cooling Tower, Applied Around Structural                        | NAD  |
| 103  | Roof Core - Built Up Roofing      | North Building | Lower Roof   | NAD  |
| 104  | TSI - White Interior (Fiberglass) | North Building | Lower Roof - Pipe Runs (Yellow)  | NAD  |
| 105  | Parapet Seam Mastic               | North Building | Metal Parapet Cap  | NAD  |
| 106  | Roof Core - Built Up Roofing      | North Building | Upper Roof Level   | NAD  |
| 107  | Roof Insulation                   | North Building | Upper Roof Level   | NAD  |
| 108  | Penetration Mastic                | North Building | Roof   | NAD  |
| 109  | Flashing / Patch Mastic           | North Building | Roof   | 8% Chrysotile  |
| 110  | Roof Insulation                   | North Building | Lower Roof Level   | NAD  |

**Asbestos Containing Materials - continued**

The following table is a listing of all suspect asbestos containing materials collected from the site. Items containing asbestos are identified in **RED**. See Appendix B for the full analytical reports.

| <b>A s b e s t o s   B u l k   S a m p l e   T a b l e</b> |   |                                 |   |  |
|--|---|---------------------------------|---|--|
| <b>Sample Number</b>                                       | <b>Material Sampled</b>                         | <b>Area</b>                     | <b>Sample Location</b>                  | <b>Analytical Results<br/>NAD=No Asbestos Detected</b> |
| 111  | Roof Core - Built Up Roofing                    | South Building                  | Penthouse Roof                          | NAD  |
| 112  | Drywall / Joint Compound / Texture              | South Building                  | Mechanical Penthouse - Outside Elevator | NAD  |
| 113  | Vinyl Floor Tile - 12" x 12" White/Blue w/ Glue | North Building Facilities Floor | Former IT Room Offices and Open Area    | NAD  |
|  |   |                                 |   |  |
|  |   |                                 |   |  |
|  |   |                                 |   |  |
|  |   |                                 |   |  |
|  |   |                                 |   |  |
|  |   |                                 |   |  |
|  |   |                                 |   |  |
|  |   |                                 |   |  |
|  |   |                                 |   |  |

484-b washington street monterey, ca 93940 # 401 / p 831 883 8415 / f 877 984 5495 / info@stechconsulting.com / stechconsulting.com

## Summary

The only accessible materials containing asbestos at 1441 Schilling are exterior roofing and HVAC mastics. There are no precautions necessary when disturbing building materials on the building interior. However, staff and contractors should remain cognizant of concealed spaces which may harbor additional suspect material. This assessment was not a pre-demolition survey and only minimally destructive sampling was conducted. Should any additional suspect materials be identified in the future, contact us to assess and sample if necessary.

The roofing and HVAC mastics identified as Asbestos Containing Materials (ACM) are non-friable in classification and currently pose no hazard to the occupants of the facility. However, should work occur on the roof which disturbs either the HVAC mastic or the roof patch, flashing, and penetration mastics, there is the potential for asbestos exposure. Disturbance to the ACMs is regulated under both the Cal-OSHA [8 CCR 1529](#) and Rule 424 for the Monterey Bay Unified Air Pollution Control District (MBUAPCD). County staff should not impact roofing mastics unless they have received Cal-OSHA Class III Operations and Maintenance Training for asbestos and are properly protected.

Should any of the identified HVAC or roof mastics containing asbestos be removed in the future, the work must be completed by the appropriate asbestos licensed contractor. A State of California Division of Occupational Safety & Health (DOSH) licensed asbestos removal contractor must be used to handle any materials with an asbestos content of greater than 0.1% ([Asbestos Containing Construction Material](#)). All work must be conducted in strict accordance with Cal-OSHA's asbestos standard, [8 CCR 1529](#) and the requirements of the Monterey Bay Unified Air Pollution Control District (MBUAPCD). Waste must be disposed of in the correct landfill for the type of asbestos being removed.

A copy of the survey must remain onsite, preferably with the facilities manager. A copy must be provided to contract staff who may impact ACM during the course of their work.

If the identified ACM will not be removed in the near future, the data from this assessment should be added to either the County of Monterey's master Asbestos Operations & Maintenance Program (O&M) or a specific O&M should be created for the buildings on this property.

Any removal of ACM should be conducted under the oversight of a third-party Certified Asbestos Consultant. Air monitoring during asbestos removal and final clearance inspections should be conducted to ensure regulatory compliance and the health and safety of building occupants.

If you have any questions please feel free to call us at 831.883.8415.

**S Tech Consulting**



**Sean P. Tillema**

**Certified Asbestos Consultant (CAC) #07-4257**

## Limitations

This report is not intended to identify all hazards or unsafe conditions or to imply that others do not exist. This survey was planned and implemented on the basis of a mutually agreed scope of work and S Tech's experience in performing this type of assessment.

The survey was limited to above ground, accessible suspect asbestos containing materials. Areas or materials outside our scope or inaccessible areas are excluded from this report.

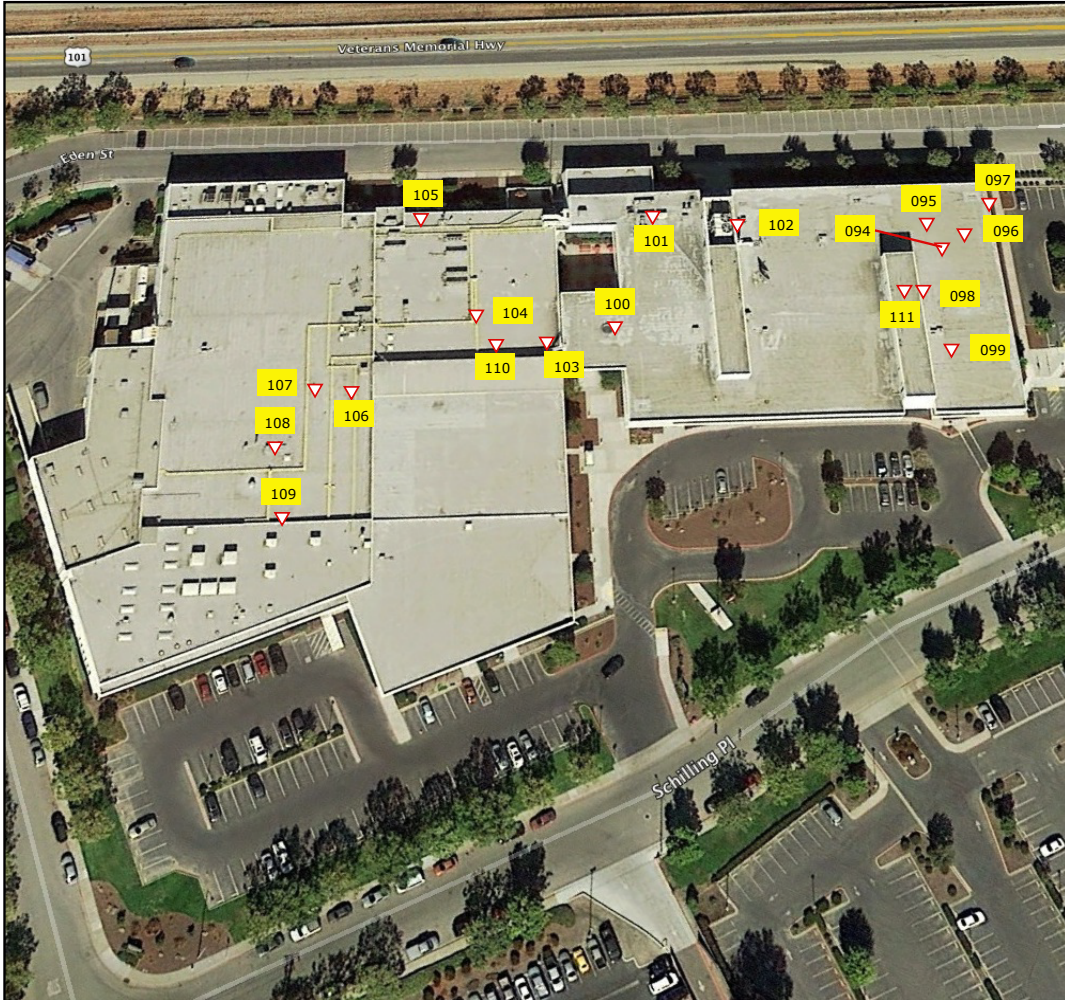
Asbestos sampling was for the purpose of operations and maintenance. This was a limited asbestos survey and not meant to be a comprehensive pre-demolition asbestos survey.

S Tech Consulting has performed this survey in a professional manner using the degree of skill and care exercised for similar projects under similar conditions, by reputable and competent environmental consultants. S Tech Consulting shall not be responsible for conditions or consequences arising from relevant facts that were concealed, withheld, or not fully disclosed at the time that this survey was conducted.

S Tech Consulting further states that no warranties, expressed or implied, are made regarding the quality, fitness, or results to be achieved as a consequence of this report or impacted by information not properly disclosed to STech at the time of this report. It further states that no responsibility is assumed for the control or correction of conditions or practices existing at the premises of the client.

**Appendix A - Site Plans & Sample Locations**

**Asbestos Survey Report**  
**1441 Schilling Place**  
**Salinas, California**



AERIAL VIEW OF SUBJECT SITE

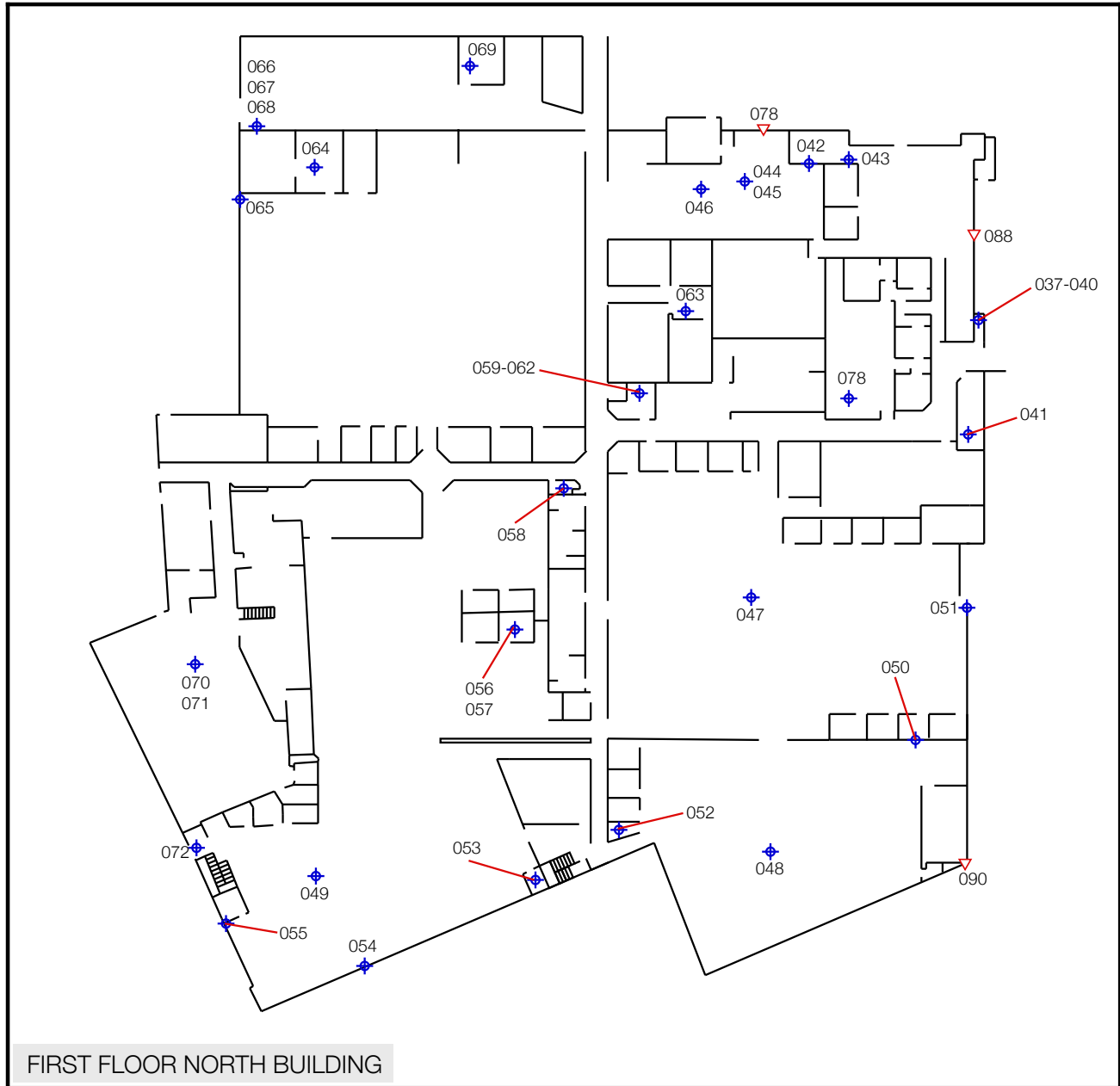
⊕ Indicates Interior Sample Location

▽ Indicates Exterior Sample Location

|  |                           |   |  |
|--|---------------------------|---|--|
|  | DATE PREPARED:<br>4/30/15 | SOURCE:<br>Google Earth                                   | DRAWING TITLE:<br>Asbestos Site Sample Location Plan |
|  | REVISION:                 | REVISION DATE:  |  |
|  | PROJECT NO:<br>15070      | SCALE:<br>NTS   |  |
| PROJECT NAME:<br>1441 Schilling Place, Salinas, California |                           | CLIENT:<br>County of Monterey: Department of Public Works | FIGURE NO. <b>A</b>                                  |



**Asbestos Survey Report  
1441 Schilling Place  
Salinas, California**



FIRST FLOOR NORTH BUILDING

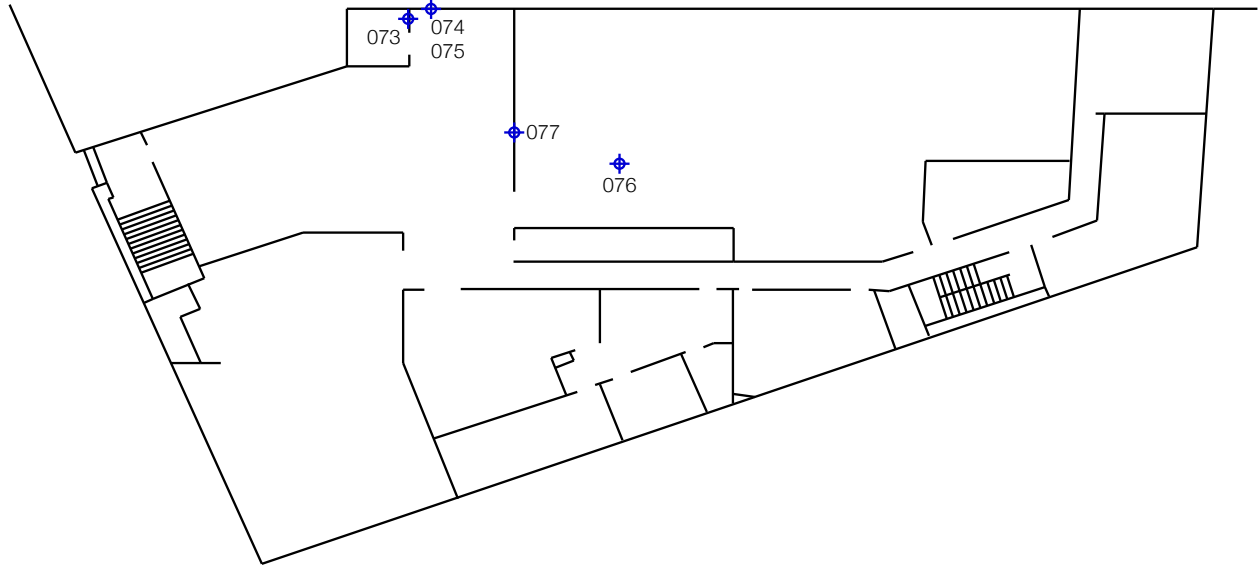
- ◆ Indicates Interior Sample Location
- ▼ Indicates Exterior Sample Location

|   |                                  |                      |   |
|---|----------------------------------|----------------------|---|
|   | DATE PREPARED:<br><b>4/30/15</b> | SOURCE: D.T.         | DRAWING TITLE:<br><b>Asbestos Site Sample Location Plan</b> |
|   | REVISION:                        | REVISION DATE:       |   |
|   | PROJECT NO:<br><b>15070</b>      | SCALE:<br><b>NTS</b> | CLIENT:<br>County of Monterey: Department of Public Works   |
| PROJECT NAME:<br><b>1441 Schilling Place, Salinas, California</b> |                                  |                      |   |

484-b washington street monterey, ca 93940 # 401 / p 831 883 8415 / f 877 984 5495 / info@stechconsulting.com /stechconsulting.com

**Asbestos Survey Report  
1441 Schilling Place  
Salinas, California**

484-b washington street monterey, ca 93940 # 401 / p 831 883 8415 / f 877 984 5495 / info@stechconsulting.com / stechconsulting.com



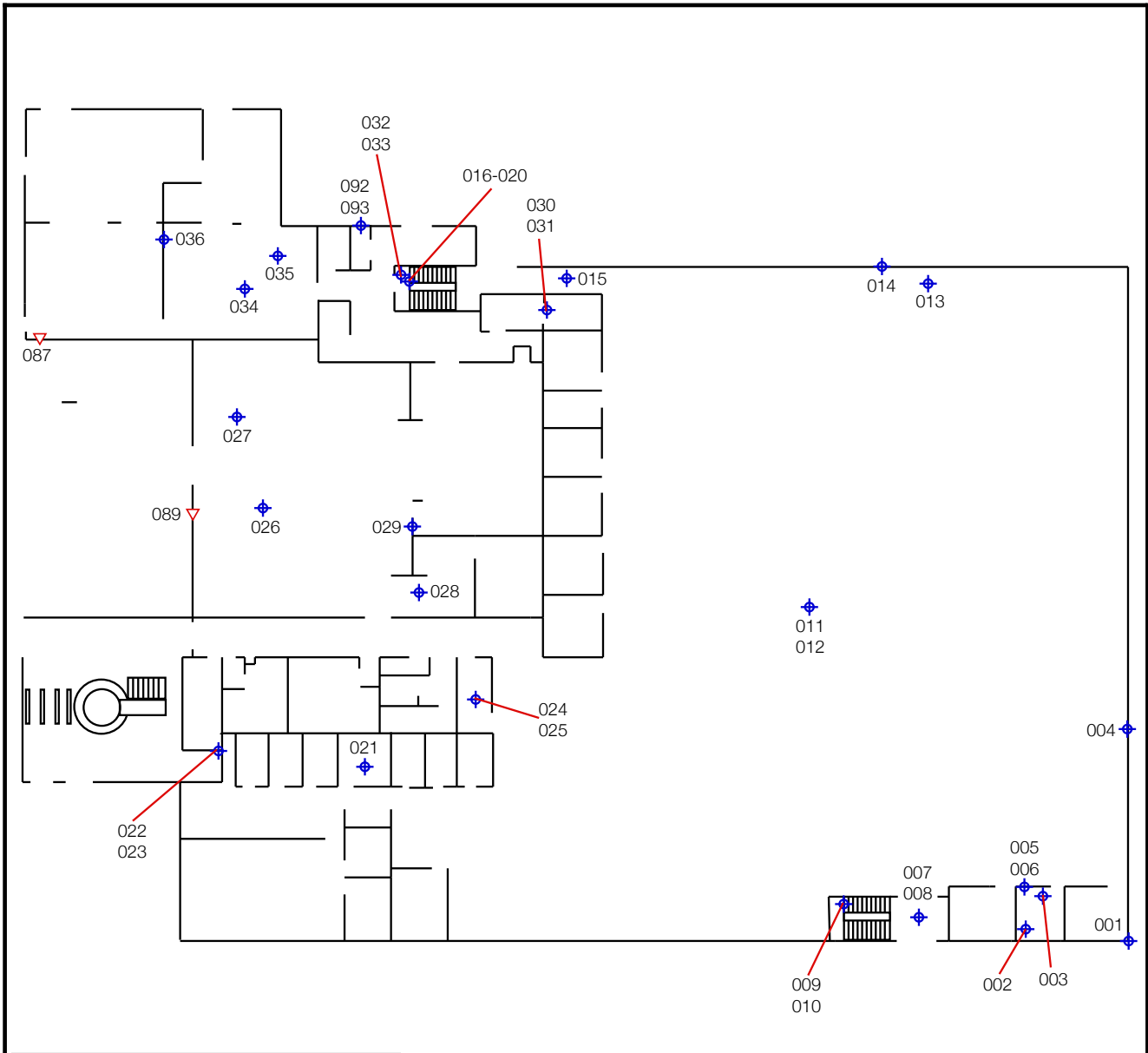
**SECOND FLOOR NORTH BUILDING**

- ◆ Indicates Interior Sample Location
- ▽ Indicates Exterior Sample Location

|   |                                  |   |   |
|---|----------------------------------|---|---|
| <b>S<br/>TECH<br/>CONSULTING</b>                                  | DATE PREPARED:<br><b>4/30/15</b> | SOURCE:<br>D.T.   | DRAWING TITLE:<br><br><b>Asbestos Site Sample Location Plan</b> |
|   | REVISION:                        | REVISION DATE:  |   |
|   | PROJECT NO:<br><b>15070</b>      | SCALE:<br><b>NTS</b>                                      |   |
| PROJECT NAME:<br><b>1441 Schilling Place, Salinas, California</b> |                                  | CLIENT:<br>County of Monterey: Department of Public Works | FIGURE NO.<br><b>2</b>  |

**Asbestos Survey Report  
1441 Schilling Place  
Salinas, California**

484-b washington street monterey, ca 93940 # 401 / p 831 883 8415 / f 877 984 5495 / info@stechconsulting.com / stechconsulting.com



**FIRST FLOOR SOUTH BUILDING**

- ◆ Indicates Interior Sample Location
- ▽ Indicates Exterior Sample Location



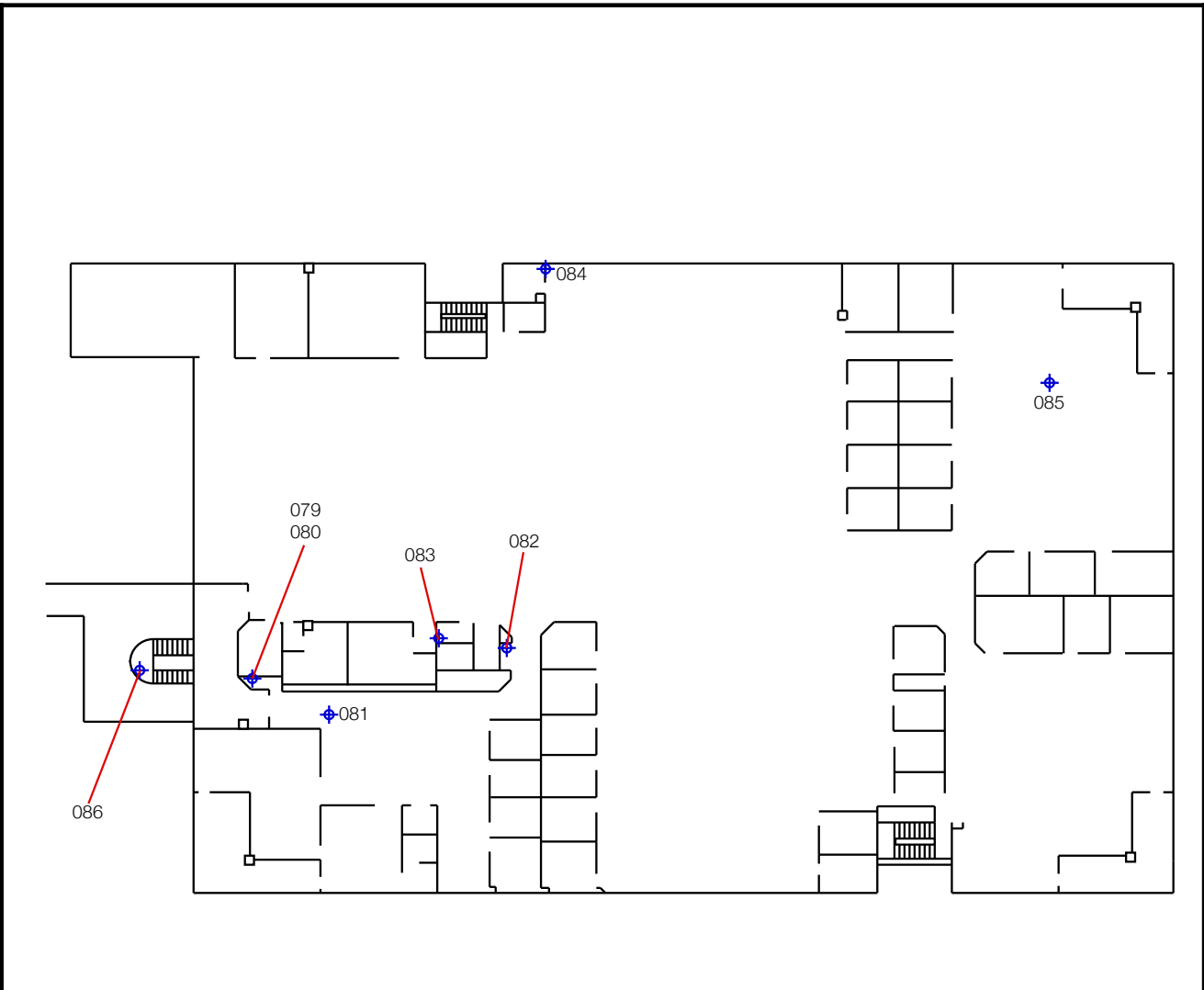
|                           |                 |
|---------------------------|-----------------|
| DATE PREPARED:<br>4/30/15 | SOURCE:<br>D.T. |
| REVISION:                 | REVISION DATE:  |
| PROJECT NO:<br>15070      | SCALE:<br>NTS   |

|   |
|---|
| DRAWING TITLE:<br><b>Asbestos Site Sample Location Plan</b> |
|---|

PROJECT NAME:  
**1441 Schilling Place, Salinas, California**

CLIENT:  
County of Monterey: Department of Public Works

FIGURE NO. **3**



**SECOND FLOOR SOUTH BUILDING**

- ◆ Indicates Interior Sample Location
- ▽ Indicates Exterior Sample Location

|   |                                  |  |   |
|---|----------------------------------|--|---|
|   | DATE PREPARED:<br><b>4/30/15</b> | SOURCE: D.T.                                   | DRAWING TITLE:<br><br><b>Asbestos Site Sample Location Plan</b> |
|   | REVISION:                        | REVISION DATE:                                 |   |
|   | PROJECT NO:<br><b>15070</b>      | SCALE:<br><b>NTS</b>                           | CLIENT:   |
| PROJECT NAME:<br><b>1441 Schilling Place, Salinas, California</b> |                                  | County of Monterey; Department of Public Works |   |

**Appendix B - Laboratory Analytical Reports**

Please Reply To:



**AmeriSci Los Angeles**

24416 S. Main Street, Ste 308  
Carson, California 90745  
TEL: (310) 834-4868 • FAX: (310) 834-4772

**FACSIMILE TELECOPY TRANSMISSION**

|  |   |
|--|---|
| <b>To:</b> Sean Tillema<br>STech Consulting LLC                        | <b>From:</b> Sandar Hein  |
| <b>Fax #:</b>  | <b>AmeriSci Job #:</b> 915041903  |
| <b>Email:</b> Sean@stechconsulting.com, labresults@stechconsulting.com | <b>Subject:</b> PLM 5 day Results   |
|  | <b>Client Project:</b> 15070; County Of Monterey; 1441 Schilling Place, Salinas, California |

**Date:** Monday, May 04, 2015

**Time:** 08:03:41

**Comments:**

**Number of Pages:** 34

(including cover sheet)

CONFIDENTIALITY NOTICE: Unless otherwise indicated, the information contained in this communication is confidential information intended for use of the individual named above. If the reader of this communication is not the intended recipient, you are hereby notified that any dissemination, distribution or copying of this communication is prohibited. If you have received this communication in error, please immediately notify the sender by telephone and return the original message to the above address via the US Postal Service at our expense. Preliminary data reported here will be verified before final report is issued. Samples are disposed of in 60 days or unless otherwise instructed by the protocol or special instructions in writing. Thank you.

*Certified Analysis    Service 24 Hours A Day • 7 Days A Week    Competitive Prices*  
visit our web site - [www.amerisci.com](http://www.amerisci.com)

**Boston • Los Angeles • New York • Richmond**



**AmeriSci Los Angeles**

24416 S. Main Street, Ste 308  
Carson, California 90745  
TEL: (310) 834-4868 • FAX: (310) 834-4772

**PLM Bulk Asbestos Report**

STech Consulting LLC  
Attn: Sean Tillema  
484B Washington Street, #401  
  
Monterey, CA 93940

**Date Received** 04/28/15  
**Date Examined** 05/01/15

**AmeriSci Job #** 915041903  
**P.O. #**  
**Page** 1 **of** 25

**RE:** 15070; County Of Monterey; 1441 Schilling Place, Salinas,  
California

| Client No. / HGA  | Lab No.        | Asbestos Present | Total % Asbestos                                      |
|---|----------------|------------------|---|
| 001<br><b>Location:</b> Cove Base Grey w/Brown Mastic / SB 1 - 1137B<br><br><b>Analyst Description:</b> Grey, Homogeneous, Non-Fibrous, Cove Base<br><b>Asbestos Types:</b><br><b>Other Material:</b> Non-fibrous 100 %                                   | 915041903-01L1 | No               | NAD<br><br>(by CVES)<br>by Sandar Hein<br>on 05/01/15 |
| 001<br><b>Location:</b> Cove Base Grey w/Brown Mastic / SB 1 - 1137B<br><br><b>Analyst Description:</b> Tan, Homogeneous, Non-Fibrous, Mastic<br><b>Asbestos Types:</b><br><b>Other Material:</b> Non-fibrous 100 %                                       | 915041903-01L2 | No               | NAD<br><br>(by CVES)<br>by Sandar Hein<br>on 05/01/15 |
| 002<br><b>Location:</b> Ceiling Tile - 2'x4' / SB 1 - 1137B<br><br><b>Analyst Description:</b> Beige/White, Heterogeneous, Fibrous, Ceiling Tile<br><b>Asbestos Types:</b><br><b>Other Material:</b> Cellulose 40 %, Fibrous glass 40 %, Non-fibrous 20 % | 915041903-02   | No               | NAD<br><br>(by CVES)<br>by Sandar Hein<br>on 05/01/15 |
| 003<br><b>Location:</b> Carpet Glue - Orange / Yellow / SB 1 - 1137B (Grey Carpet Squares)<br><br><b>Analyst Description:</b> Orange, Homogeneous, Non-Fibrous, Glue<br><b>Asbestos Types:</b><br><b>Other Material:</b> Non-fibrous 100 %                | 915041903-03   | No               | NAD<br><br>(by CVES)<br>by Sandar Hein<br>on 05/01/15 |
| 004<br><b>Location:</b> Cove Base - Olive w/Brown Mastic / SB 1 - Open Cubicle Area<br><br><b>Analyst Description:</b> Grey, Homogeneous, Non-Fibrous, Cove Base<br><b>Asbestos Types:</b><br><b>Other Material:</b> Non-fibrous 100 %                    | 915041903-04L1 | No               | NAD<br><br>(by CVES)<br>by Sandar Hein<br>on 05/01/15 |

# PLM Bulk Asbestos Report

15070; County Of Monterey; 1441 Schilling Place, Salinas,  
California

| Client No. / HGA  | Lab No.        | Asbestos Present | Total % Asbestos                           |
|---|----------------|------------------|--|
| 004   | 915041903-04L2 | No               | NAD  |
| Location: Cove Base - Olive w/Brown Mastic / SB 1 - Open Cubicle Area       |                |                  | (by CVES)<br>by Sandar Hein<br>on 05/01/15 |
| Analyst Description: Brown, Homogeneous, Non-Fibrous, Mastic                |                |                  |  |
| Asbestos Types:   |                |                  |  |
| Other Material: Non-fibrous 100 %   |                |                  |  |
| 005   | 915041903-05.1 | No               | NAD  |
| Location: Drywall / Joint Compound / SB 1 - Open Cubicle Area               |                |                  | (by CVES)<br>by Sandar Hein<br>on 05/01/15 |
| Analyst Description: White, Homogeneous, Non-Fibrous, Joint Compound / Tape |                |                  |  |
| Asbestos Types:   |                |                  |  |
| Other Material: Cellulose 10 %, Non-fibrous 90 %                            |                |                  |  |
| 005   | 915041903-05.2 | No               | NAD  |
| Location: Drywall / Joint Compound / SB 1 - Open Cubicle Area               |                |                  | (by CVES)<br>by Sandar Hein<br>on 05/01/15 |
| Analyst Description: White, Homogeneous, Non-Fibrous, Drywall               |                |                  |  |
| Asbestos Types:   |                |                  |  |
| Other Material: Cellulose 2 %, Non-fibrous 98 %                             |                |                  |  |
| 006   | 915041903-06.1 | No               | NAD  |
| Location: Drywall / Texture / SB 1 - Open Cubicle Area                      |                |                  | (by CVES)<br>by Sandar Hein<br>on 05/01/15 |
| Analyst Description: White, Homogeneous, Non-Fibrous, Texture               |                |                  |  |
| Asbestos Types:   |                |                  |  |
| Other Material: Non-fibrous 100 %   |                |                  |  |
| 006   | 915041903-06.2 | No               | NAD  |
| Location: Drywall / Texture / SB 1 - Open Cubicle Area                      |                |                  | (by CVES)<br>by Sandar Hein<br>on 05/01/15 |
| Analyst Description: White, Homogeneous, Non-Fibrous, Drywall               |                |                  |  |
| Asbestos Types:   |                |                  |  |
| Other Material: Cellulose 2 %, Non-fibrous 98 %                             |                |                  |  |
| 007   | 915041903-07L1 | No               | NAD  |
| Location: VFT - 12"x12" - White w/Black Mastic / SB 1 - S/W Stairwell Lobby |                |                  | (by CVES)<br>by Sandar Hein<br>on 05/01/15 |
| Analyst Description: White, Homogeneous, Non-Fibrous, Floor Tile            |                |                  |  |
| Asbestos Types:   |                |                  |  |
| Other Material: Non-fibrous 100 %   |                |                  |  |



# PLM Bulk Asbestos Report

15070; County Of Monterey; 1441 Schilling Place, Salinas,  
 California

| Client No. / HGA  | Lab No.        | Asbestos Present | Total % Asbestos                           |
|---|----------------|------------------|--|
| 007   | 915041903-07L2 | No               | NAD  |
| <b>Location:</b> VFT - 12"x12" - White w/Black Mastic / SB 1 - S/W Stairwell Lobby  |                |                  | (by CVES)<br>by Sandar Hein<br>on 05/01/15 |
| <b>Analyst Description:</b> Black, Homogeneous, Non-Fibrous, Mastic<br><b>Asbestos Types:</b><br><b>Other Material:</b> Non-fibrous 100 %                               |                |                  |  |
| 008   | 915041903-08L1 | No               | NAD  |
| <b>Location:</b> VFT - 12"x12" - Grey / SB 1 - S/W Stairwell Lobby  |                |                  | (by CVES)<br>by Sandar Hein<br>on 05/01/15 |
| <b>Analyst Description:</b> Grey, Homogeneous, Non-Fibrous, Floor Tile<br><b>Asbestos Types:</b><br><b>Other Material:</b> Non-fibrous 100 %                            |                |                  |  |
| 008   | 915041903-08L2 | No               | NAD  |
| <b>Location:</b> VFT - 12"x12" - Grey / SB 1 - S/W Stairwell Lobby  |                |                  | (by CVES)<br>by Sandar Hein<br>on 05/01/15 |
| <b>Analyst Description:</b> Black, Homogeneous, Non-Fibrous, Mastic<br><b>Asbestos Types:</b><br><b>Other Material:</b> Non-fibrous 100 %                               |                |                  |  |
| 009   | 915041903-09.1 | No               | NAD  |
| <b>Location:</b> Drywall / Joint Compound / SB 1 - S/W Stairwell Lobby  |                |                  | (by CVES)<br>by Sandar Hein<br>on 05/01/15 |
| <b>Analyst Description:</b> White, Homogeneous, Non-Fibrous, Joint Compound / Tape<br><b>Asbestos Types:</b><br><b>Other Material:</b> Cellulose 10 %, Non-fibrous 90 % |                |                  |  |
| 009   | 915041903-09.2 | No               | NAD  |
| <b>Location:</b> Drywall / Joint Compound / SB 1 - S/W Stairwell Lobby  |                |                  | (by CVES)<br>by Sandar Hein<br>on 05/01/15 |
| <b>Analyst Description:</b> White, Homogeneous, Non-Fibrous, Drywall<br><b>Asbestos Types:</b><br><b>Other Material:</b> Cellulose 2 %, Non-fibrous 98 %                |                |                  |  |
| 010   | 915041903-10.1 | No               | NAD  |
| <b>Location:</b> Drywall / Heavy Texture / SB 1 - S/W Stairwell Lobby   |                |                  | (by CVES)<br>by Sandar Hein<br>on 05/01/15 |
| <b>Analyst Description:</b> White, Homogeneous, Non-Fibrous, Texture<br><b>Asbestos Types:</b><br><b>Other Material:</b> Non-fibrous 100 %                              |                |                  |  |

Client Name: STech Consulting LLC

# PLM Bulk Asbestos Report

15070; County Of Monterey; 1441 Schilling Place, Salinas,  
California

| Client No. / HGA   | Lab No.        | Asbestos Present | Total % Asbestos                           |
|--|----------------|------------------|--|
| 010  | 915041903-10.2 | <b>No</b>        | NAD  |
| <b>Location:</b> Drywall / Heavy Texture / SB 1 - S/W Stairwell Lobby                  |                |                  | (by CVES)<br>by Sandar Hein<br>on 05/01/15 |
| <b>Analyst Description:</b> White, Homogeneous, Non-Fibrous, Drywall                   |                |                  |  |
| <b>Asbestos Types:</b>   |                |                  |  |
| <b>Other Material:</b> Cellulose 2 %, Non-fibrous 98 %                                 |                |                  |  |
| 011  | 915041903-11   | <b>No</b>        | NAD  |
| <b>Location:</b> Ceiling Tile - 2'x4' / SB 1 - Open Cubicle Area (Center)              |                |                  | (by CVES)<br>by Sandar Hein<br>on 05/01/15 |
| <b>Analyst Description:</b> Beige/White, Homogeneous, Fibrous, Ceiling Tile            |                |                  |  |
| <b>Asbestos Types:</b>   |                |                  |  |
| <b>Other Material:</b> Cellulose 60 %, Fibrous glass 20 %, Non-fibrous 20 %            |                |                  |  |
| 012  | 915041903-12   | <b>No</b>        | NAD  |
| <b>Location:</b> Joint Compound / SB 1 - Open Cubicle Area - Column                    |                |                  | (by CVES)<br>by Sandar Hein<br>on 05/01/15 |
| <b>Analyst Description:</b> White, Homogeneous, Non-Fibrous, Joint Compound            |                |                  |  |
| <b>Asbestos Types:</b>   |                |                  |  |
| <b>Other Material:</b> Non-fibrous 100 %   |                |                  |  |
| 013  | 915041903-13   | <b>No</b>        | NAD  |
| <b>Location:</b> Ceiling Tile - 2'x4' / SB 1 - Open Cubicle Area - Far East            |                |                  | (by CVES)<br>by Sandar Hein<br>on 05/01/15 |
| <b>Analyst Description:</b> Beige/White, Heterogeneous, Non-Fibrous, Ceiling Tile      |                |                  |  |
| <b>Asbestos Types:</b>   |                |                  |  |
| <b>Other Material:</b> Cellulose 60 %, Fibrous glass 20 %, Non-fibrous 20 %            |                |                  |  |
| 014  | 915041903-14L1 | <b>No</b>        | NAD  |
| <b>Location:</b> Cove Base - Olive w/Brown Mastic / SB 1 - Open Cubicle Area, For East |                |                  | (by CVES)<br>by Sandar Hein<br>on 05/01/15 |
| <b>Analyst Description:</b> Grey, Homogeneous, Non-Fibrous, Cove Base                  |                |                  |  |
| <b>Asbestos Types:</b>   |                |                  |  |
| <b>Other Material:</b> Non-fibrous 100 %   |                |                  |  |
| 014  | 915041903-14L2 | <b>No</b>        | NAD  |
| <b>Location:</b> Cove Base - Olive w/Brown Mastic / SB 1 - Open Cubicle Area, For East |                |                  | (by CVES)<br>by Sandar Hein<br>on 05/01/15 |
| <b>Analyst Description:</b> Brown, Homogeneous, Non-Fibrous, Mastic                    |                |                  |  |
| <b>Asbestos Types:</b>   |                |                  |  |
| <b>Other Material:</b> Non-fibrous 100 %   |                |                  |  |

Client Name: STech Consulting LLC

**PLM Bulk Asbestos Report**15070; County Of Monterey; 1441 Schilling Place, Salinas,  
California

| Client No. / HGA  | Lab No.        | Asbestos Present | Total % Asbestos                           |
|---|----------------|------------------|--|
| 015   | 915041903-15   | No               | NAD  |
| Location: Carpet Glue - Brown / SB 1 - Passage To East Stairwell            |                |                  | (by CVES)<br>by Sandar Hein<br>on 05/01/15 |
| Analyst Description: Brown, Homogeneous, Non-Fibrous, Glue                  |                |                  |  |
| Asbestos Types:   |                |                  |  |
| Other Material: Non-fibrous 100 %   |                |                  |  |
| 016   | 915041903-16.1 | No               | NAD  |
| Location: Drywall / Joint Compound / SB 1 - East Stairwell                  |                |                  | (by CVES)<br>by Sandar Hein<br>on 05/01/15 |
| Analyst Description: White, Homogeneous, Non-Fibrous, Joint Compound / Tape |                |                  |  |
| Asbestos Types:   |                |                  |  |
| Other Material: Cellulose 10 %, Non-fibrous 90 %                            |                |                  |  |
| 016   | 915041903-16.2 | No               | NAD  |
| Location: Drywall / Joint Compound / SB 1 - East Stairwell                  |                |                  | (by CVES)<br>by Sandar Hein<br>on 05/01/15 |
| Analyst Description: White, Homogeneous, Non-Fibrous, Drywall               |                |                  |  |
| Asbestos Types:   |                |                  |  |
| Other Material: Cellulose 2 %, Non-fibrous 98 %                             |                |                  |  |
| 017   | 915041903-17.1 | No               | NAD  |
| Location: Drywall / Texture / SB 1 - East Stairwell                         |                |                  | (by CVES)<br>by Sandar Hein<br>on 05/01/15 |
| Analyst Description: White, Homogeneous, Non-Fibrous, Texture               |                |                  |  |
| Asbestos Types:   |                |                  |  |
| Other Material: Non-fibrous 100 %   |                |                  |  |
| 017   | 915041903-17.2 | No               | NAD  |
| Location: Drywall / Texture / SB 1 - East Stairwell                         |                |                  | (by CVES)<br>by Sandar Hein<br>on 05/01/15 |
| Analyst Description: White, Homogeneous, Non-Fibrous, Drywall               |                |                  |  |
| Asbestos Types:   |                |                  |  |
| Other Material: Cellulose 2 %, Non-fibrous 98 %                             |                |                  |  |
| 018   | 915041903-18L1 | No               | NAD  |
| Location: Cove Base - Grey w/Brown Mastic / SB 1 - East Stairwell           |                |                  | (by CVES)<br>by Sandar Hein<br>on 05/01/15 |
| Analyst Description: Grey, Homogeneous, Non-Fibrous, Cove Base              |                |                  |  |
| Asbestos Types:   |                |                  |  |
| Other Material: Non-fibrous 100 %   |                |                  |  |

# PLM Bulk Asbestos Report

15070; County Of Monterey; 1441 Schilling Place, Salinas,  
California

| Client No. / HGA  | Lab No.        | Asbestos Present | Total % Asbestos                                    |
|---|----------------|------------------|---|
| 018   | 915041903-18L2 | No               | NAD   |
| <p><b>Location:</b> Cove Base - Grey w/Brown Mastic / SB 1 - East Stairwell</p> <p><b>Analyst Description:</b> Brown, Homogeneous, Non-Fibrous, Mastic</p> <p><b>Asbestos Types:</b></p> <p><b>Other Material:</b> Non-fibrous 100 %</p>                        |                |                  | <p>(by CVES)<br/>by Sandar Hein<br/>on 05/01/15</p> |
| 019   | 915041903-19L1 | No               | NAD   |
| <p><b>Location:</b> VFT - 12"x12" - Grey w/Black Mastic / SB 1 - East Stairwell</p> <p><b>Analyst Description:</b> Grey, Homogeneous, Non-Fibrous, Floor Tile</p> <p><b>Asbestos Types:</b></p> <p><b>Other Material:</b> Non-fibrous 100 %</p>                 |                |                  | <p>(by CVES)<br/>by Sandar Hein<br/>on 05/01/15</p> |
| 019   | 915041903-19L2 | No               | NAD   |
| <p><b>Location:</b> VFT - 12"x12" - Grey w/Black Mastic / SB 1 - East Stairwell</p> <p><b>Analyst Description:</b> Black, Homogeneous, Non-Fibrous, Mastic</p> <p><b>Asbestos Types:</b></p> <p><b>Other Material:</b> Non-fibrous 100 %</p>                    |                |                  | <p>(by CVES)<br/>by Sandar Hein<br/>on 05/01/15</p> |
| 020   | 915041903-20L1 | No               | NAD   |
| <p><b>Location:</b> VFT - 12"x12" - White / SB 1 - East Stairwell</p> <p><b>Analyst Description:</b> White/Grey, Homogeneous, Non-Fibrous, Floor Tile</p> <p><b>Asbestos Types:</b></p> <p><b>Other Material:</b> Non-fibrous 100 %</p>                         |                |                  | <p>(by CVES)<br/>by Sandar Hein<br/>on 05/01/15</p> |
| 020   | 915041903-20L2 | No               | NAD   |
| <p><b>Location:</b> VFT - 12"x12" - White / SB 1 - East Stairwell</p> <p><b>Analyst Description:</b> Black, Homogeneous, Non-Fibrous, Mastic</p> <p><b>Asbestos Types:</b></p> <p><b>Other Material:</b> Non-fibrous 100 %</p>                                  |                |                  | <p>(by CVES)<br/>by Sandar Hein<br/>on 05/01/15</p> |
| 021   | 915041903-21   | No               | NAD   |
| <p><b>Location:</b> Ceiling Tile - 2'x4' / SB 1 - 1150C</p> <p><b>Analyst Description:</b> Beige/White, Homogeneous, Fibrous, Ceiling Tile</p> <p><b>Asbestos Types:</b></p> <p><b>Other Material:</b> Cellulose 40 %, Fibrous glass 40 %, Non-fibrous 20 %</p> |                |                  | <p>(by CVES)<br/>by Sandar Hein<br/>on 05/01/15</p> |

Client Name: STech Consulting LLC

# PLM Bulk Asbestos Report

15070; County Of Monterey; 1441 Schilling Place, Salinas, California

| Client No. / HGA  | Lab No.        | Asbestos Present | Total % Asbestos  |
|---|----------------|------------------|---|
| 022   | 915041903-22.1 | No               | NAD   |
| <p><b>Location:</b> Drywall / Joint Compound / SB 1 - Alcove Next To 1202D</p> <p><b>Analyst Description:</b> White, Homogeneous, Non-Fibrous, Joint Compound / Tape<br/> <b>Asbestos Types:</b><br/> <b>Other Material:</b> Cellulose 10 %, Non-fibrous 90 %</p> |                |                  | <p>(by CVES)<br/>                     by Sandar Hein<br/>                     on 05/01/15</p> |
| 022   | 915041903-22.2 | No               | NAD   |
| <p><b>Location:</b> Drywall / Joint Compound / SB 1 - Alcove Next To 1202D</p> <p><b>Analyst Description:</b> White, Homogeneous, Non-Fibrous, Drywall<br/> <b>Asbestos Types:</b><br/> <b>Other Material:</b> Cellulose 2 %, Non-fibrous 98 %</p>                |                |                  | <p>(by CVES)<br/>                     by Sandar Hein<br/>                     on 05/01/15</p> |
| 023   | 915041903-23.1 | No               | NAD   |
| <p><b>Location:</b> Drywall / Skim Coat / SB 1 - Alcove Next To 1202D</p> <p><b>Analyst Description:</b> White, Homogeneous, Non-Fibrous, Skim Coat<br/> <b>Asbestos Types:</b><br/> <b>Other Material:</b> Non-fibrous 100 %</p>                                 |                |                  | <p>(by CVES)<br/>                     by Sandar Hein<br/>                     on 05/01/15</p> |
| 023   | 915041903-23.2 | No               | NAD   |
| <p><b>Location:</b> Drywall / Skim Coat / SB 1 - Alcove Next To 1202D</p> <p><b>Analyst Description:</b> White, Homogeneous, Non-Fibrous, Drywall<br/> <b>Asbestos Types:</b><br/> <b>Other Material:</b> Cellulose 2 %, Non-fibrous 98 %</p>                     |                |                  | <p>(by CVES)<br/>                     by Sandar Hein<br/>                     on 05/01/15</p> |
| 024   | 915041903-24.1 | No               | NAD   |
| <p><b>Location:</b> Drywall / Joint Compound / SB 1 - S1, Ethernet Room</p> <p><b>Analyst Description:</b> White, Homogeneous, Non-Fibrous, Joint Compound / Tape<br/> <b>Asbestos Types:</b><br/> <b>Other Material:</b> Cellulose 10 %, Non-fibrous 90 %</p>    |                |                  | <p>(by CVES)<br/>                     by Sandar Hein<br/>                     on 05/01/15</p> |
| 024   | 915041903-24.2 | No               | NAD   |
| <p><b>Location:</b> Drywall / Joint Compound / SB 1 - S1, Ethernet Room</p> <p><b>Analyst Description:</b> White, Homogeneous, Non-Fibrous, Drywall<br/> <b>Asbestos Types:</b><br/> <b>Other Material:</b> Cellulose 2 %, Non-fibrous 98 %</p>                   |                |                  | <p>(by CVES)<br/>                     by Sandar Hein<br/>                     on 05/01/15</p> |

# PLM Bulk Asbestos Report

15070; County Of Monterey; 1441 Schilling Place, Salinas,  
 California

| Client No. / HGA  | Lab No.        | Asbestos Present | Total % Asbestos                           |
|---|----------------|------------------|--|
| 025   | 915041903-25.1 | No               | NAD  |
| <b>Location:</b> Drywall / Hearing Texture / SB 1 - S1, Ethernet Room   |                |                  | (by CVES)<br>by Sandar Hein<br>on 05/01/15 |
| <b>Analyst Description:</b> White, Homogeneous, Non-Fibrous, Texture<br><b>Asbestos Types:</b><br><b>Other Material:</b> Non-fibrous 100 %                            |                |                  |  |
| 025   | 915041903-25.2 | No               | NAD  |
| <b>Location:</b> Drywall / Hearing Texture / SB 1 - S1, Ethernet Room   |                |                  | (by CVES)<br>by Sandar Hein<br>on 05/01/15 |
| <b>Analyst Description:</b> White, Homogeneous, Non-Fibrous, Drywall<br><b>Asbestos Types:</b><br><b>Other Material:</b> Cellulose 2 %, Non-fibrous 98 %              |                |                  |  |
| 026   | 915041903-26   | No               | NAD  |
| <b>Location:</b> Ceiling Tile - 2'x2' - Swirl Texture / SB 1 - Cafeteria  |                |                  | (by CVES)<br>by Sandar Hein<br>on 05/01/15 |
| <b>Analyst Description:</b> White/Silver, Homogeneous, Fibrous, Ceiling Tile<br><b>Asbestos Types:</b><br><b>Other Material:</b> Fibrous glass 80 %, Non-fibrous 20 % |                |                  |  |
| 027   | 915041903-27   | No               | NAD  |
| <b>Location:</b> Ceiling Tile - 2'x2' Swirl Pattern / SB 1 - Cafeteria  |                |                  | (by CVES)<br>by Sandar Hein<br>on 05/01/15 |
| <b>Analyst Description:</b> White, Homogeneous, Fibrous, Ceiling Tile<br><b>Asbestos Types:</b><br><b>Other Material:</b> Fibrous glass 80 %, Non-fibrous 20 %        |                |                  |  |
| 028   | 915041903-28   | No               | NAD  |
| <b>Location:</b> Ceiling Tile - 2'x2' Swirl Pattern / SB 1 - Cafeteria  |                |                  | (by CVES)<br>by Sandar Hein<br>on 05/01/15 |
| <b>Analyst Description:</b> White/Silver, Homogeneous, Fibrous, Ceiling Tile<br><b>Asbestos Types:</b><br><b>Other Material:</b> Fibrous glass 80 %, Non-fibrous 20 % |                |                  |  |
| 029   | 915041903-29L1 | No               | NAD  |
| <b>Location:</b> Cove Base - Black w/Cream Mastic / SB 1 - Cafeteria  |                |                  | (by CVES)<br>by Sandar Hein<br>on 05/01/15 |
| <b>Analyst Description:</b> Black, Homogeneous, Non-Fibrous, Cove Base<br><b>Asbestos Types:</b><br><b>Other Material:</b> Non-fibrous 100 %                          |                |                  |  |

# PLM Bulk Asbestos Report

15070; County Of Monterey; 1441 Schilling Place, Salinas,  
 California

| Client No. / HGA  | Lab No.        | Asbestos Present | Total % Asbestos                           |
|---|----------------|------------------|--|
| 029   | 915041903-29L2 | No               | NAD  |
| <b>Location:</b> Cove Base - Black w/Cream Mastic / SB 1 - Cafeteria  |                |                  | (by CVES)<br>by Sandar Hein<br>on 05/01/15 |
| <b>Analyst Description:</b> Cream, Homogeneous, Non-Fibrous, Mastic<br><b>Asbestos Types:</b><br><b>Other Material:</b> Non-fibrous 100 %   |                |                  |  |
| 030   | 915041903-30   | No               | NAD  |
| <b>Location:</b> Cooler Caulking / SB 1 - Walk In Cooler / Freezer  |                |                  | (by CVES)<br>by Sandar Hein<br>on 05/01/15 |
| <b>Analyst Description:</b> Silver, Homogeneous, Non-Fibrous, Caulking<br><b>Asbestos Types:</b><br><b>Other Material:</b> Non-fibrous 100 %  |                |                  |  |
| 031   | 915041903-31   | No               | NAD  |
| <b>Location:</b> Cooler Insulation / SB 1 - Walk In Cooler / Freezer  |                |                  | (by CVES)<br>by Sandar Hein<br>on 05/01/15 |
| <b>Analyst Description:</b> Black, Homogeneous, Non-Fibrous, Insulation<br><b>Asbestos Types:</b><br><b>Other Material:</b> Non-fibrous 100 %   |                |                  |  |
| 032   | 915041903-32   | No               | NAD  |
| <b>Location:</b> Linoleum - Grey Speckle / SB 1 - Kitchen, Under Stairwell Storage  |                |                  | (by CVES)<br>by Sandar Hein<br>on 05/01/15 |
| <b>Analyst Description:</b> Grey, Heterogeneous, Fibrous, Linoleum<br><b>Asbestos Types:</b><br><b>Other Material:</b> Cellulose 20 %, Synthetic fibers 10 %, Non-fibrous 70 %                  |                |                  |  |
| 033   | 915041903-33   | No               | NAD  |
| <b>Location:</b> TSI - Outer Wrap & Insulation / SB 1 - Kitchen, Under Stairwell Storage  |                |                  | (by CVES)<br>by Sandar Hein<br>on 05/01/15 |
| <b>Analyst Description:</b> Yellow/White/Silver, Homogeneous, Fibrous, Insulation Wrap<br><b>Asbestos Types:</b><br><b>Other Material:</b> Cellulose 10 %, Fibrous glass 80 %, Non-fibrous 10 % |                |                  |  |
| 034   | 915041903-34   | No               | NAD  |
| <b>Location:</b> Chiller Insulation - Black / SB 1 - Chiller Room / Electrical Rm   |                |                  | (by CVES)<br>by Sandar Hein<br>on 05/01/15 |
| <b>Analyst Description:</b> Black, Homogeneous, Non-Fibrous, Insulation<br><b>Asbestos Types:</b><br><b>Other Material:</b> Non-fibrous 100 %   |                |                  |  |

## PLM Bulk Asbestos Report

15070; County Of Monterey; 1441 Schilling Place, Salinas,  
 California

| Client No. / HGA  | Lab No.        | Asbestos Present | Total % Asbestos                           |
|---|----------------|------------------|--|
| 035   | 915041903-35   | <b>No</b>        | NAD  |
| <b>Location:</b> Chiller Pipe Insulation / Wrap / SB 1 - Chiller Room / Electrical Rm   |                |                  | (by CVES)<br>by Sandar Hein<br>on 05/01/15 |
| <b>Analyst Description:</b> Yellow/White, Homogeneous, Fibrous, Pipe Insulation / Wrap<br><b>Asbestos Types:</b><br><b>Other Material:</b> Cellulose 20 %, Fibrous glass 70 %, Non-fibrous 10 % |                |                  |  |
| 036   | 915041903-36.1 | <b>No</b>        | NAD  |
| <b>Location:</b> Drywall / Joint Compound / Tape / SB 1 - Chiller Room / Electrical Rm  |                |                  | (by CVES)<br>by Sandar Hein<br>on 05/01/15 |
| <b>Analyst Description:</b> White, Homogeneous, Non-Fibrous, Joint Compound<br><b>Asbestos Types:</b><br><b>Other Material:</b> Non-fibrous 100 %   |                |                  |  |
| 036   | 915041903-36.2 | <b>No</b>        | NAD  |
| <b>Location:</b> Drywall / Joint Compound / Tape / SB 1 - Chiller Room / Electrical Rm  |                |                  | (by CVES)<br>by Sandar Hein<br>on 05/01/15 |
| <b>Analyst Description:</b> White, Homogeneous, Non-Fibrous, Drywall<br><b>Asbestos Types:</b><br><b>Other Material:</b> Cellulose 2 %, Non-fibrous 98 %  |                |                  |  |
| 037   | 915041903-37.1 | <b>No</b>        | NAD  |
| <b>Location:</b> Drywall / Joint Compound / NB 1 - Dry Cleaning Closet  |                |                  | (by CVES)<br>by Sandar Hein<br>on 05/01/15 |
| <b>Analyst Description:</b> White, Homogeneous, Non-Fibrous, Joint Compound<br><b>Asbestos Types:</b><br><b>Other Material:</b> Non-fibrous 100 %   |                |                  |  |
| 037   | 915041903-37.2 | <b>No</b>        | NAD  |
| <b>Location:</b> Drywall / Joint Compound / NB 1 - Dry Cleaning Closet  |                |                  | (by CVES)<br>by Sandar Hein<br>on 05/01/15 |
| <b>Analyst Description:</b> White, Homogeneous, Non-Fibrous, Drywall<br><b>Asbestos Types:</b><br><b>Other Material:</b> Cellulose 2 %, Non-fibrous 98 %  |                |                  |  |
| 038   | 915041903-38.1 | <b>No</b>        | NAD  |
| <b>Location:</b> Drywall / Skim Coat / NB 1 - Dry Cleaning Closet   |                |                  | (by CVES)<br>by Sandar Hein<br>on 05/01/15 |
| <b>Analyst Description:</b> White, Homogeneous, Non-Fibrous, Skim Coat<br><b>Asbestos Types:</b><br><b>Other Material:</b> Non-fibrous 100 %  |                |                  |  |



# PLM Bulk Asbestos Report

15070; County Of Monterey; 1441 Schilling Place, Salinas,  
California

| Client No. / HGA  | Lab No.        | Asbestos Present | Total % Asbestos                                    |
|---|----------------|------------------|---|
| 038   | 915041903-38.2 | No               | NAD   |
| <p><b>Location:</b> Drywall / Skim Coat / NB 1 - Dry Cleaning Closet</p> <p><b>Analyst Description:</b> White, Homogeneous, Non-Fibrous, Drywall</p> <p><b>Asbestos Types:</b></p> <p><b>Other Material:</b> Cellulose 2 %, Non-fibrous 98 %</p>                |                |                  | <p>(by CVES)<br/>by Sandar Hein<br/>on 05/01/15</p> |
| 039   | 915041903-39L1 | No               | NAD   |
| <p><b>Location:</b> Cove Base - Black w/Cream Mastic / NB 1 - Dry Cleaning Closet</p> <p><b>Analyst Description:</b> Black, Homogeneous, Non-Fibrous, Cove Base</p> <p><b>Asbestos Types:</b></p> <p><b>Other Material:</b> Non-fibrous 100 %</p>               |                |                  | <p>(by CVES)<br/>by Sandar Hein<br/>on 05/01/15</p> |
| 039   | 915041903-39L2 | No               | NAD   |
| <p><b>Location:</b> Cove Base - Black w/Cream Mastic / NB 1 - Dry Cleaning Closet</p> <p><b>Analyst Description:</b> Cream, Homogeneous, Non-Fibrous, Mastic</p> <p><b>Asbestos Types:</b></p> <p><b>Other Material:</b> Non-fibrous 100 %</p>                  |                |                  | <p>(by CVES)<br/>by Sandar Hein<br/>on 05/01/15</p> |
| 040   | 915041903-40   | No               | NAD   |
| <p><b>Location:</b> Carpet Glue - Orange / Yellow / NB 1 - Dry Cleaning Closet</p> <p><b>Analyst Description:</b> Orange, Homogeneous, Non-Fibrous, Glue</p> <p><b>Asbestos Types:</b></p> <p><b>Other Material:</b> Non-fibrous 100 %</p>                      |                |                  | <p>(by CVES)<br/>by Sandar Hein<br/>on 05/01/15</p> |
| 041   | 915041903-41   | No               | NAD   |
| <p><b>Location:</b> Ceiling Tile - 2'x4' / NB 1 - 1361B</p> <p><b>Analyst Description:</b> Beige/White, Homogeneous, Fibrous, Ceiling Tile</p> <p><b>Asbestos Types:</b></p> <p><b>Other Material:</b> Cellulose 60 %, Fibrous glass 20 %, Non-fibrous 20 %</p> |                |                  | <p>(by CVES)<br/>by Sandar Hein<br/>on 05/01/15</p> |
| 042   | 915041903-42.1 | No               | NAD   |
| <p><b>Location:</b> Drywall / Joint Compound - No Paint / NB 1 - Lounge Electrical Room</p> <p><b>Analyst Description:</b> White, Homogeneous, Non-Fibrous, Joint Compound</p> <p><b>Asbestos Types:</b></p> <p><b>Other Material:</b> Non-fibrous 100 %</p>    |                |                  | <p>(by CVES)<br/>by Sandar Hein<br/>on 05/01/15</p> |

# PLM Bulk Asbestos Report

15070; County Of Monterey; 1441 Schilling Place, Salinas, California

| Client No. / HGA   | Lab No.        | Asbestos Present | Total % Asbestos                           |
|--|----------------|------------------|--|
| 042  | 915041903-42.2 | No               | NAD  |
| <b>Location:</b> Drywall / Joint Compound - No Paint / NB 1 - Lounge Electrical Room   |                |                  | (by CVES)<br>by Sandar Hein<br>on 05/01/15 |
| <b>Analyst Description:</b> White, Homogeneous, Non-Fibrous, Drywall<br><b>Asbestos Types:</b><br><b>Other Material:</b> Cellulose 2 %, Non-fibrous 98 %                             |                |                  |  |
| 043  | 915041903-43L1 | No               | NAD  |
| <b>Location:</b> Cove Base - Olive w/Cream Mastic / NB 1 - Employee Lounge   |                |                  | (by CVES)<br>by Sandar Hein<br>on 05/01/15 |
| <b>Analyst Description:</b> Grey, Homogeneous, Non-Fibrous, Cove Base<br><b>Asbestos Types:</b><br><b>Other Material:</b> Non-fibrous 100 %  |                |                  |  |
| 043  | 915041903-43L2 | No               | NAD  |
| <b>Location:</b> Cove Base - Olive w/Cream Mastic / NB 1 - Employee Lounge   |                |                  | (by CVES)<br>by Sandar Hein<br>on 05/01/15 |
| <b>Analyst Description:</b> Cream, Homogeneous, Non-Fibrous, Mastic<br><b>Asbestos Types:</b><br><b>Other Material:</b> Non-fibrous 100 %  |                |                  |  |
| 044  | 915041903-44.1 | No               | NAD  |
| <b>Location:</b> Drywall / Joint Compound / NB 1 - Server Room   |                |                  | (by CVES)<br>by Sandar Hein<br>on 05/01/15 |
| <b>Analyst Description:</b> White, Homogeneous, Non-Fibrous, Joint Compound<br><b>Asbestos Types:</b><br><b>Other Material:</b> Non-fibrous 100 %                                    |                |                  |  |
| 044  | 915041903-44.2 | No               | NAD  |
| <b>Location:</b> Drywall / Joint Compound / NB 1 - Server Room   |                |                  | (by CVES)<br>by Sandar Hein<br>on 05/01/15 |
| <b>Analyst Description:</b> White/Blue, Homogeneous, Fibrous, Drywall / Mesh<br><b>Asbestos Types:</b><br><b>Other Material:</b> Cellulose 2 %, Fibrous glass 10 %, Non-fibrous 88 % |                |                  |  |
| 045  | 915041903-45.1 | No               | NAD  |
| <b>Location:</b> Drywall / Texture (Splatter Pattern) / NB 1 - Server Room   |                |                  | (by CVES)<br>by Sandar Hein<br>on 05/01/15 |
| <b>Analyst Description:</b> White, Homogeneous, Non-Fibrous, Texture<br><b>Asbestos Types:</b><br><b>Other Material:</b> Non-fibrous 100 %   |                |                  |  |

# PLM Bulk Asbestos Report

15070; County Of Monterey; 1441 Schilling Place, Salinas,  
California

| Client No. / HGA  | Lab No.        | Asbestos Present | Total % Asbestos                           |
|---|----------------|------------------|--|
| 045   | 915041903-45.2 | No               | NAD  |
| Location: Drywall / Texture (Splatter Pattern) / NB 1 - Server Room         |                |                  | (by CVES)<br>by Sandar Hein<br>on 05/01/15 |
| Analyst Description: White, Homogeneous, Non-Fibrous, Drywall               |                |                  |  |
| Asbestos Types:   |                |                  |  |
| Other Material: Cellulose 2 %, Non-fibrous 98 %                             |                |                  |  |
| 046   | 915041903-46   | No               | NAD  |
| Location: Ceiling Tile - 2'x4' Smooth / NB 1 - Server Room                  |                |                  | (by CVES)<br>by Sandar Hein<br>on 05/01/15 |
| Analyst Description: Beige/White, Homogeneous, Fibrous, Ceiling Tile        |                |                  |  |
| Asbestos Types:   |                |                  |  |
| Other Material: Cellulose 60 %, Fibrous glass 20 %, Non-fibrous 20 %        |                |                  |  |
| 047   | 915041903-47   | No               | NAD  |
| Location: Ceiling Tile - 2'x4' Worm Hole / NB 1 - Center Cubicle Area       |                |                  | (by CVES)<br>by Sandar Hein<br>on 05/01/15 |
| Analyst Description: Beige/White, Homogeneous, Fibrous, Ceiling Tile        |                |                  |  |
| Asbestos Types:   |                |                  |  |
| Other Material: Cellulose 60 %, Fibrous glass 20 %, Non-fibrous 20 %        |                |                  |  |
| 048   | 915041903-48   | No               | NAD  |
| Location: Ceiling Tile - 2'x4' Worm Hole / NB 1 - Center West Cubicle Areas |                |                  | (by CVES)<br>by Sandar Hein<br>on 05/01/15 |
| Analyst Description: Beige/White, Homogeneous, Fibrous, Ceiling Tile        |                |                  |  |
| Asbestos Types:   |                |                  |  |
| Other Material: Cellulose 60 %, Fibrous glass 20 %, Non-fibrous 20 %        |                |                  |  |
| 049   | 915041903-49   | No               | NAD  |
| Location: Ceiling Tile - 2'x4' Worm Hole / NB 1 - N/W Cubicle Area          |                |                  | (by CVES)<br>by Sandar Hein<br>on 05/01/15 |
| Analyst Description: Beige/White, Homogeneous, Fibrous, Ceiling Tile        |                |                  |  |
| Asbestos Types:   |                |                  |  |
| Other Material: Cellulose 60 %, Fibrous glass 20 %, Non-fibrous 20 %        |                |                  |  |
| 050   | 915041903-50.1 | No               | NAD  |
| Location: Drywall / Joint Compound / NB 1 - 1315F                           |                |                  | (by CVES)<br>by Sandar Hein<br>on 05/04/15 |
| Analyst Description: White, Homogeneous, Non-Fibrous, Joint Compound / Tape |                |                  |  |
| Asbestos Types:   |                |                  |  |
| Other Material: Cellulose 10 %, Non-fibrous 90 %                            |                |                  |  |

Client Name: STech Consulting LLC

**PLM Bulk Asbestos Report**15070; County Of Monterey; 1441 Schilling Place, Salinas,  
California

| Client No. / HGA  | Lab No.        | Asbestos Present | Total % Asbestos                           |
|---|----------------|------------------|--|
| 050   | 915041903-50.2 | <b>No</b>        | NAD  |
| Location: Drywall / Joint Compound / NB 1 - 1315F   |                |                  | (by CVES)<br>by Sandar Hein<br>on 05/04/15 |
| Analyst Description: White, Homogeneous, Non-Fibrous, Drywall                                     |                |                  |  |
| Asbestos Types:   |                |                  |  |
| Other Material: Cellulose 2 %, Non-fibrous 98 %   |                |                  |  |
| 051   | 915041903-51.1 | <b>No</b>        | NAD  |
| Location: Drywall / Skim Coat / NB 1 - Center Cubicle Area  |                |                  | (by CVES)<br>by Sandar Hein<br>on 05/04/15 |
| Analyst Description: White, Homogeneous, Non-Fibrous, Skim Coat                                   |                |                  |  |
| Asbestos Types:   |                |                  |  |
| Other Material: Non-fibrous 100 %   |                |                  |  |
| 051   | 915041903-51.2 | <b>No</b>        | NAD  |
| Location: Drywall / Skim Coat / NB 1 - Center Cubicle Area  |                |                  | (by CVES)<br>by Sandar Hein<br>on 05/04/15 |
| Analyst Description: White, Homogeneous, Non-Fibrous, Drywall                                     |                |                  |  |
| Asbestos Types:   |                |                  |  |
| Other Material: Cellulose 2 %, Non-fibrous 98 %   |                |                  |  |
| 052   | 915041903-52L1 | <b>No</b>        | NAD  |
| Location: VFT - 12"x12" Grey w/Yellow Glue / w/Yellow Glue / NB 1 - West / Center Electrical Room |                |                  | (by CVES)<br>by Sandar Hein<br>on 05/04/15 |
| Analyst Description: Grey, Homogeneous, Non-Fibrous, Floor Tile                                   |                |                  |  |
| Asbestos Types:   |                |                  |  |
| Other Material: Non-fibrous 100 %   |                |                  |  |
| 052   | 915041903-52L2 | <b>No</b>        | NAD  |
| Location: VFT - 12"x12" Grey w/Yellow Glue / w/Yellow Glue / NB 1 - West / Center Electrical Room |                |                  | (by CVES)<br>by Sandar Hein<br>on 05/04/15 |
| Analyst Description: Yellow, Homogeneous, Non-Fibrous, Glue                                       |                |                  |  |
| Asbestos Types:   |                |                  |  |
| Other Material: Non-fibrous 100 %   |                |                  |  |
| 053   | 915041903-53L1 | <b>No</b>        | NAD  |
| Location: VFT - 12"x12" - Grey w/Glue / NB 1 - NW Electrical Room                                 |                |                  | (by CVES)<br>by Sandar Hein<br>on 05/04/15 |
| Analyst Description: Grey, Homogeneous, Non-Fibrous, Floor Tile                                   |                |                  |  |
| Asbestos Types:   |                |                  |  |
| Other Material: Non-fibrous 100 %   |                |                  |  |

## PLM Bulk Asbestos Report

15070; County Of Monterey; 1441 Schilling Place, Salinas,  
 California

| Client No. / HGA  | Lab No.        | Asbestos Present | Total % Asbestos                           |
|---|----------------|------------------|--|
| 053   | 915041903-53L2 | No               | NAD  |
| <b>Location:</b> VFT - 12"x12" - Grey w/Glue / NB 1 - NW Electrical Room  |                |                  | (by CVES)<br>by Sandar Hein<br>on 05/04/15 |
| <b>Analyst Description:</b> Yellow, Homogeneous, Non-Fibrous, Glue<br><b>Asbestos Types:</b><br><b>Other Material:</b> Non-fibrous 100 %                    |                |                  |  |
| 054   | 915041903-54L1 | No               | NAD  |
| <b>Location:</b> Cove Base - Olive w/Mastic / NB 1 - N/W Cubicle Area   |                |                  | (by CVES)<br>by Sandar Hein<br>on 05/04/15 |
| <b>Analyst Description:</b> Grey, Homogeneous, Non-Fibrous, Cove Base<br><b>Asbestos Types:</b><br><b>Other Material:</b> Non-fibrous 100 %                 |                |                  |  |
| 054   | 915041903-54L2 | No               | NAD  |
| <b>Location:</b> Cove Base - Olive w/Mastic / NB 1 - N/W Cubicle Area   |                |                  | (by CVES)<br>by Sandar Hein<br>on 05/04/15 |
| <b>Analyst Description:</b> Cream, Homogeneous, Non-Fibrous, Mastic<br><b>Asbestos Types:</b><br><b>Other Material:</b> Non-fibrous 100 %                   |                |                  |  |
| 055   | 915041903-55.1 | No               | NAD  |
| <b>Location:</b> Drywall / Joint Compound / NB 1 - N/W Telecom Room   |                |                  | (by CVES)<br>by Sandar Hein<br>on 05/04/15 |
| <b>Analyst Description:</b> White, Homogeneous, Non-Fibrous, Joint Compound<br><b>Asbestos Types:</b><br><b>Other Material:</b> Non-fibrous 100 %           |                |                  |  |
| 055   | 915041903-55.2 | No               | NAD  |
| <b>Location:</b> Drywall / Joint Compound / NB 1 - N/W Telecom Room   |                |                  | (by CVES)<br>by Sandar Hein<br>on 05/04/15 |
| <b>Analyst Description:</b> White, Homogeneous, Non-Fibrous, Drywall<br><b>Asbestos Types:</b><br><b>Other Material:</b> Cellulose 2 %, Non-fibrous 98 %    |                |                  |  |
| 056   | 915041903-56   | No               | NAD  |
| <b>Location:</b> Ceiling Panel - Exposed Fiber / NB 1 - Mechanical Loft   |                |                  | (by CVES)<br>by Sandar Hein<br>on 05/04/15 |
| <b>Analyst Description:</b> White, Homogeneous, Fibrous, Ceiling Panel<br><b>Asbestos Types:</b><br><b>Other Material:</b> Cellulose 80 %, Non-fibrous 20 % |                |                  |  |

# PLM Bulk Asbestos Report

15070; County Of Monterey; 1441 Schilling Place, Salinas, California

| Client No. / HGA  | Lab No.   | Asbestos Present | Total % Asbestos                                  |
|---|---|------------------|---|
| 057   | 915041903-57.1<br><b>Location:</b> Drywall / Joint Compound / NB 1 - Mechanical Loft      | <b>No</b>        | NAD<br>(by CVES)<br>by Sandar Hein<br>on 05/04/15 |
| <b>Analyst Description:</b> White, Homogeneous, Non-Fibrous, Joint Compound                 |   |                  |   |
| <b>Asbestos Types:</b>  |   |                  |   |
| <b>Other Material:</b> Non-fibrous 100 %  |   |                  |   |
| 057   | 915041903-57.2<br><b>Location:</b> Drywall / Joint Compound / NB 1 - Mechanical Loft      | <b>No</b>        | NAD<br>(by CVES)<br>by Sandar Hein<br>on 05/04/15 |
| <b>Analyst Description:</b> White, Homogeneous, Non-Fibrous, Drywall                        |   |                  |   |
| <b>Asbestos Types:</b>  |   |                  |   |
| <b>Other Material:</b> Cellulose 2 %, Non-fibrous 98 %                                      |   |                  |   |
| 058   | 915041903-58L1<br><b>Location:</b> Linoleum - Brown / Tan / NB 1 - Laundry Room           | <b>No</b>        | NAD<br>(by CVES)<br>by Sandar Hein<br>on 05/04/15 |
| <b>Analyst Description:</b> Brown/Tan, Heterogeneous, Fibrous, Linoleum                     |   |                  |   |
| <b>Asbestos Types:</b>  |   |                  |   |
| <b>Other Material:</b> Cellulose 20 %, Fibrous glass 5 %, Non-fibrous 75 %                  |   |                  |   |
| 058   | 915041903-58L2<br><b>Location:</b> Linoleum - Brown / Tan / NB 1 - Laundry Room           | <b>No</b>        | NAD<br>(by CVES)<br>by Sandar Hein<br>on 05/04/15 |
| <b>Analyst Description:</b> Grey/Yellow, Homogeneous, Non-Fibrous, Leveling Compound / Glue |   |                  |   |
| <b>Asbestos Types:</b>  |   |                  |   |
| <b>Other Material:</b> Non-fibrous 100 %  |   |                  |   |
| 059   | 915041903-59.1<br><b>Location:</b> Joint Compound / Drywall / NB 1 - House Keeping Office | <b>No</b>        | NAD<br>(by CVES)<br>by Sandar Hein<br>on 05/04/15 |
| <b>Analyst Description:</b> White, Homogeneous, Non-Fibrous, Joint Compound                 |   |                  |   |
| <b>Asbestos Types:</b>  |   |                  |   |
| <b>Other Material:</b> Non-fibrous 100 %  |   |                  |   |
| 059   | 915041903-59.2<br><b>Location:</b> Joint Compound / Drywall / NB 1 - House Keeping Office | <b>No</b>        | NAD<br>(by CVES)<br>by Sandar Hein<br>on 05/04/15 |
| <b>Analyst Description:</b> White, Homogeneous, Non-Fibrous, Drywall                        |   |                  |   |
| <b>Asbestos Types:</b>  |   |                  |   |
| <b>Other Material:</b> Cellulose 2 %, Non-fibrous 98 %                                      |   |                  |   |

## PLM Bulk Asbestos Report

15070; County Of Monterey; 1441 Schilling Place, Salinas,  
 California

| Client No. / HGA  | Lab No.   | Asbestos Present | Total % Asbestos                                  |
|---|---|------------------|---|
| 060   | 915041903-60.1<br>Location: Drywall / Skim Coat / NB 1 - House Keeping Office                       | No               | NAD<br>(by CVES)<br>by Sandar Hein<br>on 05/04/15 |
| <b>Analyst Description:</b> White, Homogeneous, Non-Fibrous, Skim Coat<br><b>Asbestos Types:</b><br><b>Other Material:</b> Non-fibrous 100 %  |   |                  |   |
| 060   | 915041903-60.2<br>Location: Drywall / Skim Coat / NB 1 - House Keeping Office                       | No               | NAD<br>(by CVES)<br>by Sandar Hein<br>on 05/04/15 |
| <b>Analyst Description:</b> White, Homogeneous, Non-Fibrous, Drywall<br><b>Asbestos Types:</b><br><b>Other Material:</b> Cellulose 2 %, Non-fibrous 98 %                            |   |                  |   |
| 061   | 915041903-61<br>Location: Gyp-Crete Underlayment / NB 1 - Mechanical Loft Above Housekeeping Office | No               | NAD<br>(by CVES)<br>by Sandar Hein<br>on 05/04/15 |
| <b>Analyst Description:</b> Grey, Homogeneous, Non-Fibrous, Cementitious, Underlayment<br><b>Asbestos Types:</b><br><b>Other Material:</b> Non-fibrous 100 %                        |   |                  |   |
| 062   | 915041903-62<br>Location: TSI / Wrap / NB 1 - Mechanical Loft Above Housekeeping Office             | No               | NAD<br>(by CVES)<br>by Sandar Hein<br>on 05/04/15 |
| <b>Analyst Description:</b> White/Silver, Homogeneous, Fibrous, TSI / Wrap<br><b>Asbestos Types:</b><br><b>Other Material:</b> Cellulose 80 %, Fibrous glass 10 %, Non-fibrous 10 % |   |                  |   |
| 063   | 915041903-63.1<br>Location: Drywall / Heavy Texture / NB 1 - 1863A                                  | No               | NAD<br>(by CVES)<br>by Sandar Hein<br>on 05/04/15 |
| <b>Analyst Description:</b> White, Homogeneous, Non-Fibrous, Texture<br><b>Asbestos Types:</b><br><b>Other Material:</b> Non-fibrous 100 %  |   |                  |   |
| 063   | 915041903-63.2<br>Location: Drywall / Heavy Texture / NB 1 - 1863A                                  | No               | NAD<br>(by CVES)<br>by Sandar Hein<br>on 05/04/15 |
| <b>Analyst Description:</b> White, Homogeneous, Non-Fibrous, Drywall<br><b>Asbestos Types:</b><br><b>Other Material:</b> Cellulose 2 %, Non-fibrous 98 %                            |   |                  |   |

# PLM Bulk Asbestos Report

15070; County Of Monterey; 1441 Schilling Place, Salinas, California

| Client No. / HGA   | Lab No.   | Asbestos Present | Total % Asbestos                                  |
|--|---|------------------|---|
| 064  | 915041903-64L1<br>Location: VFT - 12"x12" Beige w/Black Mastic / NB 1 -Vault                    | No               | NAD<br>(by CVES)<br>by Sandar Hein<br>on 05/04/15 |
| <b>Analyst Description:</b> Grey, Homogeneous, Non-Fibrous, Floor Tile<br><b>Asbestos Types:</b><br><b>Other Material:</b> Non-fibrous 100 %                   |   |                  |   |
| 064  | 915041903-64L2<br>Location: VFT - 12"x12" Beige w/Black Mastic / NB 1 -Vault                    | No               | NAD<br>(by CVES)<br>by Sandar Hein<br>on 05/04/15 |
| <b>Analyst Description:</b> Black, Homogeneous, Non-Fibrous, Mastic<br><b>Asbestos Types:</b><br><b>Other Material:</b> Non-fibrous 100 %                      |   |                  |   |
| 065  | 915041903-65L1<br>Location: Concealed VFT w/Black Mastic / NB 1 - N/E Cubicle Area Under Carpet | No               | NAD<br>(by CVES)<br>by Sandar Hein<br>on 05/04/15 |
| <b>Analyst Description:</b> Grey, Homogeneous, Non-Fibrous, Floor Tile<br><b>Asbestos Types:</b><br><b>Other Material:</b> Non-fibrous 100 %                   |   |                  |   |
| 065  | 915041903-65L2<br>Location: Concealed VFT w/Black Mastic / NB 1 - N/E Cubicle Area Under Carpet | No               | NAD<br>(by CVES)<br>by Sandar Hein<br>on 05/04/15 |
| <b>Analyst Description:</b> Black, Homogeneous, Non-Fibrous, Mastic<br><b>Asbestos Types:</b><br><b>Other Material:</b> Synthetic fibers 2 %, Non-fibrous 98 % |   |                  |   |
| 066  | 915041903-66.1<br>Location: Drywall / Joint Compound / NB 1 - New Addition                      | No               | NAD<br>(by CVES)<br>by Sandar Hein<br>on 05/04/15 |
| <b>Analyst Description:</b> White, Homogeneous, Non-Fibrous, Joint Compound<br><b>Asbestos Types:</b><br><b>Other Material:</b> Non-fibrous 100 %              |   |                  |   |
| 066  | 915041903-66.2<br>Location: Drywall / Joint Compound / NB 1 - New Addition                      | No               | NAD<br>(by CVES)<br>by Sandar Hein<br>on 05/04/15 |
| <b>Analyst Description:</b> White, Homogeneous, Non-Fibrous, Drywall<br><b>Asbestos Types:</b><br><b>Other Material:</b> Cellulose 2 %, Non-fibrous 98 %       |   |                  |   |



# PLM Bulk Asbestos Report

15070; County Of Monterey; 1441 Schilling Place, Salinas,  
 California

| Client No. / HGA   | Lab No.   | Asbestos Present | Total % Asbestos                                  |
|--|---|------------------|---|
| 067  | 915041903-67.1<br>Location: Drywall / Skim Coat / NB 1 - New Addition                   | No               | NAD<br>(by CVES)<br>by Sandar Hein<br>on 05/04/15 |
| <b>Analyst Description:</b> White, Homogeneous, Non-Fibrous, Skim Coat<br><b>Asbestos Types:</b><br><b>Other Material:</b> Non-fibrous 100 %                                   |   |                  |   |
| 067  | 915041903-67.2<br>Location: Drywall / Skim Coat / NB 1 - New Addition                   | No               | NAD<br>(by CVES)<br>by Sandar Hein<br>on 05/04/15 |
| <b>Analyst Description:</b> White, Homogeneous, Non-Fibrous, Drywall<br><b>Asbestos Types:</b><br><b>Other Material:</b> Cellulose 2 %, Non-fibrous 98 %                       |   |                  |   |
| 068  | 915041903-68L1<br>Location: Cove Base - Green w/Cream Mastic / NB 1 - New Addition      | No               | NAD<br>(by CVES)<br>by Sandar Hein<br>on 05/04/15 |
| <b>Analyst Description:</b> Green, Homogeneous, Non-Fibrous, Cove Base<br><b>Asbestos Types:</b><br><b>Other Material:</b> Non-fibrous 100 %                                   |   |                  |   |
| 068  | 915041903-68L2<br>Location: Cove Base - Green w/Cream Mastic / NB 1 - New Addition      | No               | NAD<br>(by CVES)<br>by Sandar Hein<br>on 05/04/15 |
| <b>Analyst Description:</b> Cream, Homogeneous, Non-Fibrous, Mastic<br><b>Asbestos Types:</b><br><b>Other Material:</b> Non-fibrous 100 %                                      |   |                  |   |
| 069  | 915041903-69<br>Location: Ceiling Tile - 2'x2' / NB 1 - New Addition                    | No               | NAD<br>(by CVES)<br>by Sandar Hein<br>on 05/04/15 |
| <b>Analyst Description:</b> Beige, Homogeneous, Fibrous, Ceiling Tile<br><b>Asbestos Types:</b><br><b>Other Material:</b> Cellulose 40 %, Fibrous glass 40 %, Non-fibrous 20 % |   |                  |   |
| 070  | 915041903-70<br>Location: HVAC Duct Seam Tape - White / NB 1 - Warehouse Air Handler Rm | No               | NAD<br>(by CVES)<br>by Sandar Hein<br>on 05/04/15 |
| <b>Analyst Description:</b> White, Homogeneous, Fibrous, HVAC Tape<br><b>Asbestos Types:</b><br><b>Other Material:</b> Cellulose 75 %, Non-fibrous 25 %                        |   |                  |   |

# PLM Bulk Asbestos Report

15070; County Of Monterey; 1441 Schilling Place, Salinas,  
 California

| Client No. / HGA  | Lab No.        | Asbestos Present | Total % Asbestos                           |
|---|----------------|------------------|--|
| 071   | 915041903-71.1 | No               | NAD  |
| <b>Location:</b> Drywall / Joint Compound / NB 1 - Warehouse Air Handler Rm   |                |                  | (by CVES)<br>by Sandar Hein<br>on 05/04/15 |
| <b>Analyst Description:</b> White, Homogeneous, Non-Fibrous, Joint Compound / Tape<br><b>Asbestos Types:</b><br><b>Other Material:</b> Cellulose 10 %, Non-fibrous 90 % |                |                  |  |
| 071   | 915041903-71.2 | No               | NAD  |
| <b>Location:</b> Drywall / Joint Compound / NB 1 - Warehouse Air Handler Rm   |                |                  | (by CVES)<br>by Sandar Hein<br>on 05/04/15 |
| <b>Analyst Description:</b> White, Homogeneous, Non-Fibrous, Drywall<br><b>Asbestos Types:</b><br><b>Other Material:</b> Cellulose 2 %, Non-fibrous 98 %                |                |                  |  |
| 072   | 915041903-72   | No               | NAD  |
| <b>Location:</b> VFT - 12"x12" - Tan w/White Streak / NB 1 - Warehouse Stairwell  |                |                  | (by CVES)<br>by Sandar Hein<br>on 05/04/15 |
| <b>Analyst Description:</b> Tan, Homogeneous, Non-Fibrous, Floor Tile<br><b>Asbestos Types:</b><br><b>Other Material:</b> Non-fibrous 100 %                             |                |                  |  |
| 073   | 915041903-73.1 | No               | NAD  |
| <b>Location:</b> Drywall / Joint Compound No Paint / NB 2 - Facilities Floor - Passage  |                |                  | (by CVES)<br>by Sandar Hein<br>on 05/04/15 |
| <b>Analyst Description:</b> White, Homogeneous, Non-Fibrous, Joint Compound<br><b>Asbestos Types:</b><br><b>Other Material:</b> Non-fibrous 100 %                       |                |                  |  |
| 073   | 915041903-73.2 | No               | NAD  |
| <b>Location:</b> Drywall / Joint Compound No Paint / NB 2 - Facilities Floor - Passage  |                |                  | (by CVES)<br>by Sandar Hein<br>on 05/04/15 |
| <b>Analyst Description:</b> White, Homogeneous, Non-Fibrous, Drywall<br><b>Asbestos Types:</b><br><b>Other Material:</b> Cellulose 2 %, Non-fibrous 98 %                |                |                  |  |
| 074   | 915041903-74.1 | No               | NAD  |
| <b>Location:</b> Stucco - White Texture / NB 2 - Facilities Floor - Passage   |                |                  | (by CVES)<br>by Sandar Hein<br>on 05/04/15 |
| <b>Analyst Description:</b> White, Homogeneous, Non-Fibrous, Texture<br><b>Asbestos Types:</b><br><b>Other Material:</b> Non-fibrous 100 %                              |                |                  |  |

Client Name: STech Consulting LLC

# PLM Bulk Asbestos Report

15070; County Of Monterey; 1441 Schilling Place, Salinas,  
California

| Client No. / HGA  | Lab No.        | Asbestos Present | Total % Asbestos                           |
|---|----------------|------------------|--|
| 074   | 915041903-74.2 | No               | NAD  |
| Location: Stucco - White Texture / NB 2 - Facilities Floor - Passage      |                |                  | (by CVES)<br>by Sandar Hein<br>on 05/04/15 |
| Analyst Description: Grey, Homogeneous, Non-Fibrous, Cementitious, Stucco |                |                  |  |
| Asbestos Types:   |                |                  |  |
| Other Material: Non-fibrous 100 %   |                |                  |  |
| 075   | 915041903-75   | No               | NAD  |
| Location: Stucco Vapor Barrier / NB 2 - Facilities Floor - Passage        |                |                  | (by CVES)<br>by Sandar Hein<br>on 05/04/15 |
| Analyst Description: Brown/Black, Homogeneous, Fibrous, Vapor Barrier     |                |                  |  |
| Asbestos Types:   |                |                  |  |
| Other Material: Cellulose 80 %, Non-fibrous 20 %                          |                |                  |  |
| 076   | 915041903-76   | No               | NAD  |
| Location: TSI - White / NB 2 - Facilities Floor - Air Handler             |                |                  | (by CVES)<br>by Sandar Hein<br>on 05/04/15 |
| Analyst Description: Yellow/White, Homogeneous, Fibrous, TSI              |                |                  |  |
| Asbestos Types:   |                |                  |  |
| Other Material: Fibrous glass 50 %, Non-fibrous 50 %                      |                |                  |  |
| 077   | 915041903-77.1 | No               | NAD  |
| Location: Drywall / Texture / NB 2 - Facilities Floor - Air Handler       |                |                  | (by CVES)<br>by Sandar Hein<br>on 05/04/15 |
| Analyst Description: White, Homogeneous, Non-Fibrous, Texture             |                |                  |  |
| Asbestos Types:   |                |                  |  |
| Other Material: Non-fibrous 100 %   |                |                  |  |
| 077   | 915041903-77.2 | No               | NAD  |
| Location: Drywall / Texture / NB 2 - Facilities Floor - Air Handler       |                |                  | (by CVES)<br>by Sandar Hein<br>on 05/04/15 |
| Analyst Description: White, Homogeneous, Non-Fibrous, Drywall             |                |                  |  |
| Asbestos Types:   |                |                  |  |
| Other Material: Cellulose 2 %, Non-fibrous 98 %                           |                |                  |  |
| 078   | 915041903-78   | No               | NAD  |
| Location: Ceiling Tile - 2'x2' / NB 1 - Gym                               |                |                  | (by CVES)<br>by Sandar Hein<br>on 05/04/15 |
| Analyst Description: Beige/White, Homogeneous, Fibrous, Ceiling Tile      |                |                  |  |
| Asbestos Types:   |                |                  |  |
| Other Material: Cellulose 50 %, Fibrous glass 30 %, Non-fibrous 20 %      |                |                  |  |

# PLM Bulk Asbestos Report

15070; County Of Monterey; 1441 Schilling Place, Salinas,  
 California

| Client No. / HGA   | Lab No.        | Asbestos Present | Total % Asbestos                           |
|--|----------------|------------------|--|
| 079  | 915041903-79.1 | No               | NAD  |
| <b>Location:</b> Drywall / Joint Compound / SB 2 - Passage Closet (Storage)  |                |                  | (by CVES)<br>by Sandar Hein<br>on 05/04/15 |
| <b>Analyst Description:</b> White, Homogeneous, Non-Fibrous, Joint Compound<br><b>Asbestos Types:</b><br><b>Other Material:</b> Non-fibrous 100 %                                    |                |                  |  |
| 079  | 915041903-79.2 | No               | NAD  |
| <b>Location:</b> Drywall / Joint Compound / SB 2 - Passage Closet (Storage)  |                |                  | (by CVES)<br>by Sandar Hein<br>on 05/04/15 |
| <b>Analyst Description:</b> White, Homogeneous, Non-Fibrous, Drywall<br><b>Asbestos Types:</b><br><b>Other Material:</b> Cellulose 2 %, Non-fibrous 98 %                             |                |                  |  |
| 080  | 915041903-80.1 | No               | NAD  |
| <b>Location:</b> Drywall / Texture / SB 2 - Passage Closet (Storage)   |                |                  | (by CVES)<br>by Sandar Hein<br>on 05/04/15 |
| <b>Analyst Description:</b> White, Homogeneous, Non-Fibrous, Texture<br><b>Asbestos Types:</b><br><b>Other Material:</b> Non-fibrous 100 %   |                |                  |  |
| 080  | 915041903-80.2 | No               | NAD  |
| <b>Location:</b> Drywall / Texture / SB 2 - Passage Closet (Storage)   |                |                  | (by CVES)<br>by Sandar Hein<br>on 05/04/15 |
| <b>Analyst Description:</b> White, Homogeneous, Non-Fibrous, Drywall<br><b>Asbestos Types:</b><br><b>Other Material:</b> Cellulose 2 %, Non-fibrous 98 %                             |                |                  |  |
| 081  | 915041903-81   | No               | NAD  |
| <b>Location:</b> Ceiling Tile - 2'x4' / SB 2 - Passage Closet (Storage)  |                |                  | (by CVES)<br>by Sandar Hein<br>on 05/04/15 |
| <b>Analyst Description:</b> Beige/White, Homogeneous, Fibrous, Ceiling Tile<br><b>Asbestos Types:</b><br><b>Other Material:</b> Cellulose 40 %, Fibrous glass 40 %, Non-fibrous 20 % |                |                  |  |
| 082  | 915041903-82.1 | No               | NAD  |
| <b>Location:</b> Drywall / Joint Compound / Tape / SB 2 - Passage Electrical Closet  |                |                  | (by CVES)<br>by Sandar Hein<br>on 05/04/15 |
| <b>Analyst Description:</b> White, Homogeneous, Non-Fibrous, Joint Compound / Tape<br><b>Asbestos Types:</b><br><b>Other Material:</b> Cellulose 10 %, Non-fibrous 90 %              |                |                  |  |

Client Name: STech Consulting LLC

# PLM Bulk Asbestos Report

15070; County Of Monterey; 1441 Schilling Place, Salinas, California

| Client No. / HGA   | Lab No.        | Asbestos Present | Total % Asbestos                                    |
|--|----------------|------------------|---|
| 082  | 915041903-82.2 | No               | NAD   |
| <p><b>Location:</b> Drywall / Joint Compound / Tape / SB 2 - Passage Electrical Closet</p> <p><b>Analyst Description:</b> White, Homogeneous, Non-Fibrous, Drywall</p> <p><b>Asbestos Types:</b></p> <p><b>Other Material:</b> Cellulose 2 %, Non-fibrous 98 %</p>   |                |                  | <p>(by CVES)<br/>by Sandar Hein<br/>on 05/04/15</p> |
| 083  | 915041903-83L1 | No               | NAD   |
| <p><b>Location:</b> VFT - 12"x12" Grey w/Black Mastic / SB 2 - Janitor's Closet</p> <p><b>Analyst Description:</b> Grey, Homogeneous, Non-Fibrous, Floor Tile</p> <p><b>Asbestos Types:</b></p> <p><b>Other Material:</b> Non-fibrous 100 %</p>                      |                |                  | <p>(by CVES)<br/>by Sandar Hein<br/>on 05/04/15</p> |
| 083  | 915041903-83L2 | No               | NAD   |
| <p><b>Location:</b> VFT - 12"x12" Grey w/Black Mastic / SB 2 - Janitor's Closet</p> <p><b>Analyst Description:</b> Black, Homogeneous, Non-Fibrous, Mastic</p> <p><b>Asbestos Types:</b></p> <p><b>Other Material:</b> Non-fibrous 100 %</p>                         |                |                  | <p>(by CVES)<br/>by Sandar Hein<br/>on 05/04/15</p> |
| 084  | 915041903-84.1 | No               | NAD   |
| <p><b>Location:</b> Drywall / Joint Compound / SB 2 - Center Cubicle Area</p> <p><b>Analyst Description:</b> White, Homogeneous, Non-Fibrous, Joint Compound / Tape</p> <p><b>Asbestos Types:</b></p> <p><b>Other Material:</b> Cellulose 10 %, Non-fibrous 90 %</p> |                |                  | <p>(by CVES)<br/>by Sandar Hein<br/>on 05/04/15</p> |
| 084  | 915041903-84.2 | No               | NAD   |
| <p><b>Location:</b> Drywall / Joint Compound / SB 2 - Center Cubicle Area</p> <p><b>Analyst Description:</b> White, Homogeneous, Non-Fibrous, Drywall</p> <p><b>Asbestos Types:</b></p> <p><b>Other Material:</b> Cellulose 2 %, Non-fibrous 98 %</p>                |                |                  | <p>(by CVES)<br/>by Sandar Hein<br/>on 05/04/15</p> |
| 085  | 915041903-85   | No               | NAD   |
| <p><b>Location:</b> Ceiling Tile = 2'x4' / SB 2 - S/E Cubicle Area</p> <p><b>Analyst Description:</b> Beige, Homogeneous, Fibrous, Ceiling Tile</p> <p><b>Asbestos Types:</b></p> <p><b>Other Material:</b> Cellulose 40 %, Fibrous glass 40 %, Non-fibrous 20 %</p> |                |                  | <p>(by CVES)<br/>by Sandar Hein<br/>on 05/04/15</p> |

Client Name: STech Consulting LLC

# PLM Bulk Asbestos Report

15070; County Of Monterey; 1441 Schilling Place, Salinas,  
California

| Client No. / HGA   | Lab No.      | Asbestos Present | Total % Asbestos                                    |
|--|--------------|------------------|---|
| 086  | 915041903-86 | No               | NAD   |
| <p>Location: Vinyl Flooring - Thick w/Circles / SB 1 / SB 2 - Main Stairwell Lobby</p> <p>Analyst Description: Grey, Homogeneous, Non-Fibrous, Flooring Material</p> <p>Asbestos Types:</p> <p>Other Material: Non-fibrous 100 %</p> |              |                  | <p>(by CVES)<br/>by Sandar Hein<br/>on 05/04/15</p> |
| 087  | 915041903-87 | No               | NAD   |
| <p>Location: Stucco / SB Exterior</p> <p>Analyst Description: Grey/White, Homogeneous, Non-Fibrous, Cementitious, Stucco</p> <p>Asbestos Types:</p> <p>Other Material: Non-fibrous 100 %</p>   |              |                  | <p>(by CVES)<br/>by Sandar Hein<br/>on 05/04/15</p> |
| 088  | 915041903-88 | No               | NAD   |
| <p>Location: Stucco / SB Exterior</p> <p>Analyst Description: Grey/White, Homogeneous, Non-Fibrous, Cementitious, Stucco</p> <p>Asbestos Types:</p> <p>Other Material: Non-fibrous 100 %</p>   |              |                  | <p>(by CVES)<br/>by Sandar Hein<br/>on 05/04/15</p> |
| 089  | 915041903-89 | No               | NAD   |
| <p>Location: Stucco / NB Exterior</p> <p>Analyst Description: Grey/White, Homogeneous, Non-Fibrous, Cementitious, Stucco</p> <p>Asbestos Types:</p> <p>Other Material: Non-fibrous 100 %</p>   |              |                  | <p>(by CVES)<br/>by Sandar Hein<br/>on 05/04/15</p> |
| 090  | 915041903-90 | No               | NAD   |
| <p>Location: Stucco / NB Exterior</p> <p>Analyst Description: Grey/White, Homogeneous, Non-Fibrous, Cementitious, Stucco</p> <p>Asbestos Types:</p> <p>Other Material: Non-fibrous 100 %</p>   |              |                  | <p>(by CVES)<br/>by Sandar Hein<br/>on 05/04/15</p> |
| 091  | 915041903-91 | No               | NAD   |
| <p>Location: Caulking - Expansion Joint / NB Exterior - Expansion Joint</p> <p>Analyst Description: White, Homogeneous, Non-Fibrous, Caulking</p> <p>Asbestos Types:</p> <p>Other Material: Non-fibrous 100 %</p>                    |              |                  | <p>(by CVES)<br/>by Sandar Hein<br/>on 05/04/15</p> |

Client Name: STech Consulting LLC

# PLM Bulk Asbestos Report

15070; County Of Monterey; 1441 Schilling Place, Salinas, California

| Client No. / HGA   | Lab No.      | Asbestos Present | Total % Asbestos                                  |
|--|--------------|------------------|---|
| 092<br>Location: Stucco  | 915041903-92 | No               | NAD<br>(by CVES)<br>by Sandar Hein<br>on 05/04/15 |
| <b>Analyst Description:</b> Tan, Homogeneous, Non-Fibrous, Cementitious, Stucco<br><b>Asbestos Types:</b><br><b>Other Material:</b> Non-fibrous 100 %  |              |                  |   |
| 093<br>Location: Stucco Vapor Paper  | 915041903-93 | No               | NAD<br>(by CVES)<br>by Sandar Hein<br>on 05/04/15 |
| <b>Analyst Description:</b> Brown/Black, Homogeneous, Non-Fibrous, Bulk Material<br><b>Asbestos Types:</b><br><b>Other Material:</b> Non-fibrous 100 % |              |                  |   |

**Reporting Notes:**

Analyzed By: Sandar Hein Sandar; Date Analyzed: 5/1/2015 05/04/15  
 \*NAD = no asbestos detected; Detection Limit <1%; Reporting Limits: CVES = 1%, 400 Pt Ct = 0.25%, 1000 Pt Ct = 0.1%; NA = not analyzed; NA/PS = not analyzed / positive stop; NVA = No Visible Asbestos; PLM (polarized light microscopy) Bulk Asbestos Analysis by EPA 600/M4-82-020 per 40 CFR 763 (NVLAP Lab #200346-0, CA ELAP lab #2322); Note: PLM is not consistently reliable in detecting asbestos in floor coverings and similar NOB materials. TEM is currently the only method that can be used to determine if this material can be considered or treated as non-asbestos-containing in New York State (also see EPA Advisory for floor tile, FR 59, 146, 38970, 8/1/94). NIST Accreditation requirements mandate that this report must not be reproduced except in full with the approval of the laboratory. This PLM report relates ONLY to the items tested.  
 Reviewed By: ataldn

91504 K03

**S  
TECH  
CONSULTING**

484-B Washington Street, #401  
 Monterey, California 93940  
 T 831.883.8415  
 F 831.384.0359  
 info@stechconsulting.com  
 stechconsulting.com

Date: 4/25 - 4/27/15 Project: 15070

CAC/CSST: Sean Tillema, CAC 07-4257

Client: County of Monterey

Site: 1441 Schilling Place, Salinas, California

**Asbestos Bulk Sample Log**


| Sample # | Material                                     | Sample Location                                      | Condition | Friable |
|----------|--|--|-----------|---------|
| 001      | Core Bar Grey w/ Matrix                      | SBL - 1137 B   | D         | NF      |
| 002      | Ceiling Tile - 2' x 4'                       |  | G         | F       |
| 003      | Carpet Cube - orange / yellow                | (Core, Carpet Square)                                |           | NF      |
| 004      | Core Base - <sup>olive</sup> Brown w/ Matrix | Open <del>Cubicle</del> <sup>Cubicle</sup> Core Area |           | F       |
| 005      | Drywall / Joint Compound                     | - Open Cubicle Area                                  |           | F       |
| 006      | ↓ / Texture                                  | - ↓ ↓ ↓  |           | NF      |
| 007      | VFT - 12" x 12" - w/ wick w/ Matrix          | - s/w Stairwell Lobby                                |           | F       |
| 008      | ↓ - Grey                                     | - ↓ ↓ ↓  |           | F       |
| 009      | Drywall / Joint Compound                     | - ↓ ↓ ↓  |           | F       |
| 010      | ↓ / Heavy Texture                            | - ↓ ↓ ↓  |           | F       |
| 011      | Ceiling Tile - 2' x 4'                       | - Open Cubicle Area (center)                         |           | F       |
| 012      | Joint Compound                               | - ↓ ↓ ↓ - Column Far East                            |           | F       |
| 013      | Ceiling Tile - 2' x 4'                       | - ↓ ↓ ↓  |           | F       |

Turn Around Requested: **Standard**

Analysis: PLM

Results to: Sean@stechconsulting.com

Chain of Custody (COO) 

Relinquished by:  Date: 4/27/15 Time: 1:20 PM

Received by: B. ARELLANO Date: 4/27/15 Time: 1:20 PM



915041903

Project: 15070

**S  
TECH  
CONSULTING**

484-B Washington Street, #401  
 Monterey, California 93940  
 T 831.883.8415  
 F 831.384.0359  
 info@stechconsulting.com  
 stechconsulting.com

**Asbestos Bulk Sample Log**

| Sample # | Material                                   | Sample Location                   | Condition | Friable |
|----------|--|-----------------------------------|-----------|---------|
| 014      | Cove Base - <del>tan</del> Olive w/ mentic | SBI - Open Cubicle Area, For EAST | G         | NF      |
| 015      | Carpet Glue - Brown                        | - Passage to East Stairwell       |           | I       |
| 016      | Drywall / Joint Compound                   | - EAST Stairwell                  |           | F       |
| 017      | I / Texture                                |                                   |           | I       |
| 018      | Cove Base - Grey w/ mentic                 |                                   |           | NF      |
| 019      | VET-12" x 12" - Grey w/ mentic             |                                   |           | I       |
| 020      | I - White                                  |                                   |           | F       |
| 021      | Ceiling Tile - 2'x4'                       | - 1150c                           |           | F       |
| 022      | Drywall / Joint Compound                   | - Alcove next to 1202D            |           | F       |
| 023      | I / skim coat                              | - I - I - I                       |           | F       |
| 024      | Drywall / Joint Compound                   | - S1, Ethernet Room               |           | I       |
| 025      | I / Heavy Texture                          | - I - I - I                       |           | I       |
| 026      | Ceiling Tile - 2'x2' - swirl texture       | - Cafeteria                       |           | I       |

Turn Around Requested: **Standard**

Analysis: PLM

Results to: Sean@stechconsulting.com

Chain of Custody (COO)  


Relinquished by: \_\_\_\_\_ Date: 4/27/15 Time: 1500

Received by: B. ARELLANO Date: APR 28 2015 01025 Time: \_\_\_\_\_

915041903

Project: 15070

**STECH CONSULTING**  
 484-B Washington Street, #401  
 Monterey, California 93940  
 T 831.883.8415  
 F 831.384.0359  
 info@stechconsulting.com  
 stechconsulting.com

Asbestos Bulk Sample Log

| Sample # | Material                          | Sample Location                               | Condition | Friable |
|----------|-----------------------------------|---|-----------|---------|
| 027      | Ceiling Tile - 2'x2'              | SBI - Cafeteria                               | G         | F       |
| 028      | Swirl pattern<br>└ ─┘ ─┘ ─┘ ─┘ ─┘ | └ ─┘ ─┘ ─┘ ─┘ ─┘                              | I         | I       |
| 029      | Cove Base - Black w/ cream mastic | └ ─┘ ─┘ ─┘ ─┘ ─┘                              | I         | NF      |
| 030      | Cooler Caulking                   | - walls in cooler / freezer                   | I         | I       |
| 031      | Insulation                        | - ─┘ ─┘ ─┘ ─┘ ─┘                              | I         | I       |
| 032      | Linoleum - grey speckle           | - Kitchen, <sup>under</sup> Stairwell Storage | D         | F       |
| 033      | TSI - outer wrap + insulation     | - ─┘ ─┘ ─┘ ─┘ ─┘                              | G         | F       |
| 034      | Chiller Insulation - Bleche       | - Chiller Room / Electrical Rm.               | I         | I       |
| 035      | Chiller Pipe Insulation / Wrap    | └ ─┘ ─┘ ─┘ ─┘ ─┘                              | I         | I       |
| 036      | Drywall / Joint Compound / Tape   | └ ─┘ ─┘ ─┘ ─┘ ─┘                              | I         | I       |
| 037      | Drywall / Joint Compound          | NB1 - Drycleaning Closet                      | I         | I       |
| 038      | Drywall / Skin Coat               | └ ─┘ ─┘ ─┘ ─┘ ─┘                              | I         | I       |
| 039      | Cove Base - Black w/ cream mastic | └ ─┘ ─┘ ─┘ ─┘ ─┘                              | I         | NF      |

Turn Around Requested: **Standard**

Analysis: PLM

Results to: Sean@stechconsulting.com

Chain of Custody (COO) 

Relinquished by:  Date: 4/27/15 Time: 1:20

Received by: B. ARELLANO Date: 4/28/15 Time: 10:25

915041903

Project: 15070

**S  
TECH  
CONSULTING**

484-B Washington Street, #401  
 Monterey, California 93940  
 T 831.883.8415  
 F 831.384.0359  
 info@stechconsulting.com  
 stechconsulting.com

**Asbestos Bulk Sample Log**

| Sample # | Material                           | Sample Location               | Condition | Friable |
|----------|------------------------------------|-------------------------------|-----------|---------|
| 040      | Carpet Glue - Orange/yellow        | NB1 - Drycleaning Closet      | G         | NF      |
| 041      | Ceiling Tile - 2'x4'               | - 1361B                       |           | F       |
| 042      | Drywall / Joint Compound - paint   | - Lounge Electrical Room      |           | F       |
| 043      | Cave Base - olive w/ mottled green | - Employee Lounge             |           | NF      |
| 044      | Drywall / Joint Compound           | - Server Room                 |           | F       |
| 045      | + / Texture (Splat) (Pattern)      | -                             |           |         |
| 046      | Ceiling Tile - 2'x4' Smooth        | -                             |           |         |
| 047      | - 2'x4' Hole                       | - Center Cubicle Area         |           |         |
| 048      |                                    | - Center West Cubicle Area    |           |         |
| 049      |                                    | - N/W Cubicle Area            |           |         |
| 050      | Drywall / Joint Compound           | - 1315F                       |           |         |
| 051      | + / Skim Coat                      | - Center Cubicle Area         |           |         |
| 052      | VFT- 12"x12", grey w/ yellow glue  | - west/center Electrical Room |           | NF      |

Turn Around Requested: **Standard**

Chain of Custody (COO)  
 Relinquished by: 

Analysis: PLM

Date: 4/27/15 Time: 1520

Results to: Sean@stechconsulting.com

Received by: APR 28 2015 1025 Date: Time: \_\_\_\_\_

**B. ARELLANO**

015041903

Project: 15070

**S  
TECH  
CONSULTING**

484-B Washington Street, #401  
 Monterey, California 93940  
 T 831.883.8415  
 F 831.384.0359  
 info@techconsulting.com  
 techconsulting.com

**Asbestos Bulk Sample Log**

| Sample # | Material                      | Sample Location                             | Condition | Friable |
|----------|-------------------------------|---|-----------|---------|
| 053      | VFT-12"x12"-grey w/ glue      | NB1 - N/W Electrical Room                   | C         | NF      |
| 054      | Cove Base - slive w/ Matrix   | - N/W Cubicle Area                          | I         | I       |
| 055      | Drywall / Joint Compound      | - N/W Telecom Room                          | I         | F       |
| 056      | Ceiling Panel - Exposed Fiber | - Mechanical Loft                           | I         | I       |
| 057      | Drywall / Joint Compound      | - I   | I         | I       |
| 058      | Underlayment - Brass / Tan    | - Laundry Room                              | I         | I       |
| 059      | Joint Compound / Drywall      | - Housekeeping Office                       | D         | I       |
| 060      | Drywall / Skin Coat           | - I   | D         | I       |
| 061      | Gypcrete Underlayment         | - Mechanical left above Housekeeping office | C         | I       |
| 062      | T5I / Wrap                    | - I   | C         | I       |
| 063      | Drywall / Heavy Texture       | - 1863A                                     | I         | I       |
| 064      | VFT-12"x12" Beige w/ Matrix   | - Vault                                     | I         | NF      |
| 065      | Concealed VFT w/ Matrix       | - N/E Cubicle Area under Carpet             | I         | I       |

Chain of Custody (COO)  
 Relinquished by:  Date: 4/27/10 Time: 1500  
 Received by: B. ARELLANO Date: 01025 Time: \_\_\_\_\_

Turn Around Requested: **Standard**  
 Analysis: PLM  
 Results to: Sean@techconsulting.com

915041903

Project: 15070

**S  
TECH  
CONSULTING**

484-B Washington Street, #401  
 Monterey, California 93940  
 T 831.883.8415  
 F 831.384.0359  
 info@stechconsulting.com  
 techconsulting.com

**Asbestos Bulk Sample Log**

| Sample # | Material   | Sample Location                  | Condition | Friable |
|----------|--|----------------------------------|-----------|---------|
| 066      | Drywall / Joint Compound                           | NB1 - New Addition               | C         | & F     |
| 067      | └ / Skim Coat                                      |                                  |           | F       |
| 068      | Core Base - green w/ mastic                        |                                  |           | NF      |
| 069      | Ceiling Tile - 2'x2'                               |                                  |           | F       |
| 070      | HVAC Duct Seam Tape - white                        | - Warehouse Air Handler Pan      |           |         |
| 071      | Drywall / Joint Compound                           | - Warehouse Stairwell            |           | NF      |
| 072      | 12" x 12" Ten w/ VFT - <del>two</del> white streak | - Warehouse Stairwell            |           | NF      |
| 073      | Drywall / Joint Compound paint                     | NB2 - Facilities Floor - Passage |           | F       |
| 074      | Sterco - white texture                             |                                  |           | NF      |
| 075      | Sterco Vapor Barrier                               |                                  |           | NF      |
| 076      | -TSI - white                                       | - Air Handler                    |           | F       |
| 077      | Drywall / Texture                                  |                                  |           | F       |
| 078      | Ceiling Tile - 2'x2'                               | NB1 - Coym                       |           | F       |

Turn Around Requested: **Standard**

Analysis: PLM

Results to: Sean@stechconsulting.com

Chain of Custody (COC)

Relinquished by: SP Date: 4/27/15 Time: 1:20

Received by: B. ARELLANO Date: 4/27/15 Time: 1:25

915041903

Project: 15070

**S  
TECH  
CONSULTING**  
484-B Washington Street, #401  
Monterey, California 93940  
T 831.883.8415  
F 831.384.0359  
info@techconsulting.com  
techconsulting.com

Asbestos Bulk Sample Log

| Sample # | Material   | Sample Location                  | Condition | Friable |
|----------|--|----------------------------------|-----------|---------|
| 079      | Drywall / Joint Compound   | SB2 - Passage Closet (Storage)   | G         | F       |
| 080      | Drywall / Texture  | -                                |           |         |
| 081      | Ceiling Tile - 2'x4'   | -                                |           |         |
| 082      | Drywall / Joint Compound / Tape                                  | - Electrical Closet              |           |         |
| 083      | VFT - 12" x 12" grey w/ <del>spare</del> <sup>Black Mastic</sup> | - Janitor's Closet               |           | NF      |
| 084      | Drywall / Joint Compound   | - Cubicle Area                   |           | F       |
| 085      | Ceiling Tile - 2'x4'   | - S/E Cubicle Area               | D         | F       |
| 086      | Vinyl Flooring - Thick w/ Circles                                | SB1 / SB2 - Main Stairwell Lobby | G         | NF      |
| 087      | Stucco   | SB Exterior                      |           |         |
| 088      |  | SB                               |           |         |
| 089      |  | NB                               |           |         |
| 090      | Stucco   | NB                               |           |         |
| 091      | Caulking - Expansion Joint                                       | NB - Expansion Joint             |           |         |

Turn Around Requested: Standard

Analysis: PLM

Results to: Sean@techconsulting.com

Chain of Custody (COO)

Relinquished by: SD Date: 4/27/15 Time: 1500

Received by: \_\_\_\_\_ Date: APR 28 2015 Time: 01025

B. ARELLANO

915041903

Project: 15070

# S TECH CONSULTING

484-B Washington Street, #401  
Monterey, California 93940  
T 831.883.8415  
F 831.384.0359  
info@stechconsulting.com  
stechconsulting.com

## Asbestos Bulk Sample Log

| Sample # | Material     | Sample Location | Condition | Friable |
|----------|--------------|-----------------|-----------|---------|
| 092      | Stucco       |                 |           |         |
| 093      | Stucco Paper |                 |           |         |
|          |              |                 |           |         |
|          |              |                 |           |         |
|          |              |                 |           |         |
|          |              |                 |           |         |
|          |              |                 |           |         |
|          |              |                 |           |         |
|          |              |                 |           |         |
|          |              |                 |           |         |
|          |              |                 |           |         |
|          |              |                 |           |         |
|          |              |                 |           |         |
|          |              |                 |           |         |
|          |              |                 |           |         |

Chain of Custody (COC):  
Relinquished by: [Signature] Date: 4/27/15 Time: 1500  
01025  
Received by: B. ARELLANO Date: \_\_\_\_\_ Time: \_\_\_\_\_

Turn Around Requested: **Standard**  
Analysis: PLM  
Results to: Sean@stechconsulting.com

Please Reply To:



**AmeriSci Los Angeles**

24416 S. Main Street, Ste 308  
Carson, California 90745  
TEL: (310) 834-4868 • FAX: (310) 834-4772

**FACSIMILE TELECOPY TRANSMISSION**

|   |   |
|---|---|
| <b>To:</b> Sean Tillema<br>STech Consulting LLC                       | <b>From:</b> John A. Lopez  |
| <b>Fax #:</b>   | <b>AmeriSci Job #:</b> 915051022  |
| <b>Email:</b> Sean@stechconsulting.com,labresults@stechconsulting.com | <b>Subject:</b> PLM 5 day Results   |
|   | <b>Client Project:</b> 15070-2; County Of Monterey;<br>1441 Schilling Place Salinas, CA |

**Date:** Tuesday, May 05, 2015

**Time:** 13:39:02

**Comments:**

**Number of Pages:** 8  
(including cover sheet)

CONFIDENTIALITY NOTICE: Unless otherwise indicated, the information contained in this communication is confidential information intended for use of the individual named above. If the reader of this communication is not the intended recipient, you are hereby notified that any dissemination, distribution or copying of this communication is prohibited. If you have received this communication in error, please immediately notify the sender by telephone and return the original message to the above address via the US Postal Service at our expense. Preliminary data reported here will be verified before final report is issued. Samples are disposed of in 60 days or unless otherwise instructed by the protocol or special instructions in writing. Thank you.

*Certified Analysis    Service 24 Hours A Day • 7 Days A Week    Competitive Prices*  
visit our web site - [www.amerisci.com](http://www.amerisci.com)

**Boston • Los Angeles • New York • Richmond**





**AmeriSci Los Angeles**

24416 S. Main Street, Ste 308  
Carson, California 90745  
TEL: (310) 834-4868 • FAX: (310) 834-4772

## PLM Bulk Asbestos Report

STech Consulting LLC  
Attn: Sean Tillema  
484B Washington Street, #401  
Monterey, CA 93940

**Date Received** 05/01/15  
**Date Examined** 05/05/15

**AmeriSci Job #** 915051022  
**P.O. #**  
**Page** 1 of 5

**RE:** 15070-2; County Of Monterey; 1441 Schilling Place Salinas, CA

| Client No. / HGA   | Lab No.      | Asbestos Present | Total % Asbestos                                    |
|--|--------------|------------------|---|
| 094<br><b>Location:</b> Roof Core - Built up Roofing - South Building - Roof             | 915051022-01 | No               | NAD<br>(by CVES)<br>by John A. Lopez<br>on 05/05/15 |
| <b>Analyst Description:</b> Black/Grey, Heterogeneous, Fibrous, Roofing                  |              |                  |   |
| <b>Asbestos Types:</b>   |              |                  |   |
| <b>Other Material:</b> Fibrous glass 25 %, Synthetic fibers 10 %, Non-fibrous 65 %       |              |                  |   |
| 095<br><b>Location:</b> Roof Insulation - South Building - Roof                          | 915051022-02 | No               | NAD<br>(by CVES)<br>by John A. Lopez<br>on 05/05/15 |
| <b>Analyst Description:</b> Yellow, Heterogeneous, Fibrous, Insulation                   |              |                  |   |
| <b>Asbestos Types:</b>   |              |                  |   |
| <b>Other Material:</b> Fibrous glass 5 %, Non-fibrous 95 %                               |              |                  |   |
| 096<br><b>Location:</b> Penetration Mastic - South Building - Roof                       | 915051022-03 | Yes              | 3 %<br>(by CVES)<br>by John A. Lopez<br>on 05/05/15 |
| <b>Analyst Description:</b> Silver/Black, Heterogeneous, Non-Fibrous, Penetration Mastic |              |                  |   |
| <b>Asbestos Types:</b> Chrysotile 3.0 %  |              |                  |   |
| <b>Other Material:</b> Non-fibrous 97 %  |              |                  |   |
| 097<br><b>Location:</b> Roof Patch - South Building - Roof, Around Drainage Inlet        | 915051022-04 | No               | NAD<br>(by CVES)<br>by John A. Lopez<br>on 05/05/15 |
| <b>Analyst Description:</b> Silver/Black, Homogeneous, Non-Fibrous, Roofing              |              |                  |   |
| <b>Asbestos Types:</b>   |              |                  |   |
| <b>Other Material:</b> Non-fibrous 100 %   |              |                  |   |
| 098<br><b>Location:</b> Caulking Beige - South Building - Penthouse Siding               | 915051022-05 | No               | NAD<br>(by CVES)<br>by John A. Lopez<br>on 05/05/15 |
| <b>Analyst Description:</b> Beige, Homogeneous, Non-Fibrous, Caulking                    |              |                  |   |
| <b>Asbestos Types:</b>   |              |                  |   |
| <b>Other Material:</b> Non-fibrous 100 %   |              |                  |   |

Client Name: STech Consulting LLC

**PLM Bulk Asbestos Report**15070-2; County Of Monterey; 1441 Schilling Place Salinas,  
CA

| Client No. / HGA | Lab No.  | Asbestos Present | Total % Asbestos                             |
|------------------|--|------------------|--|
| 099              | 915051022-06   | No               | NAD  |
|                  | Location: HVAC Seam Mastic - South Building Roof Ducting                       |                  | (by CVES)<br>by John A. Lopez<br>on 05/05/15 |
|                  | Analyst Description: White, Homogeneous, Non-Fibrous, Seam Mastic              |                  |  |
|                  | Asbestos Types:  |                  |  |
|                  | Other Material: Non-fibrous 100 %  |                  |  |
| 100              | 915051022-07   | Yes              | 2 %  |
|                  | Location: Flashing Mastic - South Building - Lobby Skylight                    |                  | (by CVES)<br>by John A. Lopez<br>on 05/05/15 |
|                  | Analyst Description: Silver/Black, Homogeneous, Non-Fibrous, Flashing          |                  |  |
|                  | Asbestos Types: Chrysotile 2.0 %   |                  |  |
|                  | Other Material: Non-fibrous 98 %   |                  |  |
| 101              | 915051022-08   | Yes              | 10 %   |
|                  | Location: HVAC Mastic - Grey - South Building - Roof Ducting                   |                  | (by CVES)<br>by John A. Lopez<br>on 05/05/15 |
|                  | Analyst Description: Grey/Rust, Heterogeneous, Fibrous, HVAC Mastic            |                  |  |
|                  | Asbestos Types: Chrysotile 10.0 %  |                  |  |
|                  | Other Material: Non-fibrous 90 %   |                  |  |
| 102              | 915051022-09   | No               | NAD  |
|                  | Location: Penetration Coating White - South Building - Exterior Cooling Tower  |                  | (by CVES)<br>by John A. Lopez<br>on 05/05/15 |
|                  | Analyst Description: White/Black, Homogeneous, Non-Fibrous, Penetration Mastic |                  |  |
|                  | Asbestos Types:  |                  |  |
|                  | Other Material: Non-fibrous 100 %  |                  |  |
| 103              | 915051022-10   | No               | NAD  |
|                  | Location: Roor Core - Built Up Roofing - North Building - Lower Roof           |                  | (by CVES)<br>by John A. Lopez<br>on 05/05/15 |
|                  | Analyst Description: Black/Grey, Heterogeneous, Fibrous, Roofing               |                  |  |
|                  | Asbestos Types:  |                  |  |
|                  | Other Material: Fibrous glass 15 %, Synthetic fibers 10 %, Non-fibrous 75 %    |                  |  |
| 104              | 915051022-11   | No               | NAD  |
|                  | Location: TSI - White - North Building - Roof Pipe Runs                        |                  | (by CVES)<br>by John A. Lopez<br>on 05/05/15 |
|                  | Analyst Description: White/Yellow, Heterogeneous, Fibrous, TSI                 |                  |  |
|                  | Asbestos Types:  |                  |  |
|                  | Other Material: Fibrous glass 100 %  |                  |  |

Client Name: STech Consulting LLC

**PLM Bulk Asbestos Report**15070-2; County Of Monterey; 1441 Schilling Place Salinas,  
CA

| Client No. / HGA | Lab No.   | Asbestos Present | Total % Asbestos                             |
|------------------|---|------------------|--|
| 105              | 915051022-12  | <b>No</b>        | NAD  |
|                  | <b>Location:</b> Parapet Seam Mastic - North Building - Metal Parapet Cap               |                  | (by CVES)<br>by John A. Lopez<br>on 05/05/15 |
|                  | <b>Analyst Description:</b> Grey, Homogeneous, Non-Fibrous, Seam Mastic                 |                  |  |
|                  | <b>Asbestos Types:</b>  |                  |  |
|                  | <b>Other Material:</b> Non-fibrous 100 %  |                  |  |
| 106              | 915051022-13  | <b>No</b>        | NAD  |
|                  | <b>Location:</b> Roof Core Built Up Roofing - North Building - Upper Roof Level         |                  | (by CVES)<br>by John A. Lopez<br>on 05/05/15 |
|                  | <b>Analyst Description:</b> Black, Heterogeneous, Fibrous, Roofing                      |                  |  |
|                  | <b>Asbestos Types:</b>  |                  |  |
|                  | <b>Other Material:</b> Fibrous glass 20 %, Non-fibrous 80 %                             |                  |  |
| 107              | 915051022-14  | <b>No</b>        | NAD  |
|                  | <b>Location:</b> Roof Insulation - North Building - Upper Roof Level                    |                  | (by CVES)<br>by John A. Lopez<br>on 05/05/15 |
|                  | <b>Analyst Description:</b> Black/Yellow, Heterogeneous, Fibrous, Insulation            |                  |  |
|                  | <b>Asbestos Types:</b>  |                  |  |
|                  | <b>Other Material:</b> Fibrous glass 25 %, Non-fibrous 75 %                             |                  |  |
| 108              | 915051022-15  | <b>No</b>        | NAD  |
|                  | <b>Location:</b> Penetration Mastic - North Building - Roof                             |                  | (by CVES)<br>by John A. Lopez<br>on 05/05/15 |
|                  | <b>Analyst Description:</b> Black/Beige, Heterogeneous, Non-Fibrous, Penetration Mastic |                  |  |
|                  | <b>Asbestos Types:</b>  |                  |  |
|                  | <b>Other Material:</b> Cellulose 3 %, Non-fibrous 97 %                                  |                  |  |
| 109              | 915051022-16  | <b>Yes</b>       | 8 %  |
|                  | <b>Location:</b> Flashing - Patch Mastic - North Building - Roof                        |                  | (by CVES)<br>by John A. Lopez<br>on 05/05/15 |
|                  | <b>Analyst Description:</b> Grey/Black, Heterogeneous, Fibrous, Flashing                |                  |  |
|                  | <b>Asbestos Types:</b> Chrysotile 8.0 %   |                  |  |
|                  | <b>Other Material:</b> Non-fibrous 92 %   |                  |  |
| 110              | 915051022-17  | <b>No</b>        | NAD  |
|                  | <b>Location:</b> Roof Insulation - North Building - Lower Roof Level                    |                  | (by CVES)<br>by John A. Lopez<br>on 05/05/15 |
|                  | <b>Analyst Description:</b> Black/Yellow, Heterogeneous, Fibrous, Insulation            |                  |  |
|                  | <b>Asbestos Types:</b>  |                  |  |
|                  | <b>Other Material:</b> Fibrous glass 10 %, Non-fibrous 90 %                             |                  |  |

Client Name: STech Consulting LLC

**PLM Bulk Asbestos Report**15070-2; County Of Monterey; 1441 Schilling Place Salinas,  
CA

| Client No. / HGA   | Lab No.        | Asbestos Present | Total % Asbestos                             |
|--|----------------|------------------|--|
| 111  | 915051022-18   | <b>No</b>        | NAD  |
| Location: Roof Core - Built Up Roofing - South Building - Penthouse Roof             |                |                  | (by CVES)<br>by John A. Lopez<br>on 05/05/15 |
| Analyst Description: Black, Heterogeneous, Fibrous, Roofing                          |                |                  |  |
| Asbestos Types:  |                |                  |  |
| Other Material: Fibrous glass 25 %, Non-fibrous 75 %                                 |                |                  |  |
| 112  | 915051022-19.1 | <b>No</b>        | NAD  |
| Location: Drywall - Joint Compound - Texture - South Building Mechanical Penthouse   |                |                  | (by CVES)<br>by John A. Lopez<br>on 05/05/15 |
| Analyst Description: White, Homogeneous, Non-Fibrous, Joint Compound                 |                |                  |  |
| Asbestos Types:  |                |                  |  |
| Other Material: Non-fibrous 100 %  |                |                  |  |
| 112  | 915051022-19.2 | <b>No</b>        | NAD  |
| Location: Drywall - Joint Compound - Texture - South Building Mechanical Penthouse   |                |                  | (by CVES)<br>by John A. Lopez<br>on 05/05/15 |
| Analyst Description: White, Homogeneous, Non-Fibrous, Texture                        |                |                  |  |
| Asbestos Types:  |                |                  |  |
| Other Material: Non-fibrous 100 %  |                |                  |  |
| 112  | 915051022-19.3 | <b>No</b>        | NAD  |
| Location: Drywall - Joint Compound - Texture - South Building Mechanical Penthouse   |                |                  | (by CVES)<br>by John A. Lopez<br>on 05/05/15 |
| Analyst Description: White, Heterogeneous, Non-Fibrous, Drywall                      |                |                  |  |
| Asbestos Types:  |                |                  |  |
| Other Material: Gypsum 100 %   |                |                  |  |
| 113  | 915051022-20L1 | <b>No</b>        | NAD  |
| Location: VFT 12"x12" White - Blue w/ Glue - North Building - Facility Floor IT Room |                |                  | (by CVES)<br>by John A. Lopez<br>on 05/05/15 |
| Analyst Description: Beige, Heterogeneous, Non-Fibrous, Cementitious, Floor Tile     |                |                  |  |
| Asbestos Types:  |                |                  |  |
| Other Material: Non-fibrous 100 %  |                |                  |  |
| 113  | 915051022-20L2 | <b>No</b>        | NAD  |
| Location: VFT 12"x12" White - Blue w/ Glue - North Building - Facility Floor IT Room |                |                  | (by CVES)<br>by John A. Lopez<br>on 05/05/15 |
| Analyst Description: Yellow, Homogeneous, Non-Fibrous, Glue                          |                |                  |  |
| Asbestos Types:  |                |                  |  |
| Other Material: Non-fibrous 100 %  |                |                  |  |

Client Name: STech Consulting LLC

# PLM Bulk Asbestos Report

15070-2; County Of Monterey; 1441 Schilling Place Salinas,  
CA

---

## Reporting Notes:

Analyzed By: John A. Lopez *John Lopez*; Date Analyzed: 5/5/2015 *5-5-15*  
\*NAD = no asbestos detected; Detection Limit <1%; Reporting Limits: CVES = 1%, 400 Pt Ct = 0.25%, 1000 Pt Ct = 0.1%; NA = not analyzed; NA/PS = not analyzed / positive stop; NVA = No Visible Asbestos; PLM (polarized light microscopy) Bulk Asbestos Analysis by EPA 600/M4-82-020 per 40 CFR 763 (NVLAP Lab #200346-0, CA ELAP lab #2322); Note: PLM is not consistently reliable in detecting asbestos in floor coverings and similar NOB materials. TEM is currently the only method that can be used to determine if this material can be considered or treated as non-asbestos-containing in New York State (also see EPA Advisory for floor tile, FR 59, 146, 38970, 8/1/94). NIST Accreditation requirements mandate that this report must not be reproduced except in full with the approval of the laboratory. This PLM report relates ONLY to the items tested.  
Reviewed By: *ant aldi*

STECH CONSULTING

484-B Washington Street, #401  
 Monterey, California 93940  
 T 831.883.8415  
 F 831.384.0359  
 info@stechconsulting.com  
 stechconsulting.com

91505102

001-093 Previously submitted Asbestos Bulk Sample Log

|         |                                   |           |              |
|---------|-----------------------------------|-----------|--------------|
| Date:   | 4/30/15                           | Project:  | 15070-2      |
| Client: | County of Monterey                | CAC/CSST: | Sean Tillena |
| Site:   | 1441 Schilling Place, Salinas, CA |           |              |

| Sample # | Material                     | Sample Location  | Condition                   | Friable        |   |
|----------|------------------------------|--|-----------------------------|----------------|---|
| 094      | Roof Core - Built Up Roofing | South Building - Roof  | G                           | NF             |   |
| 095      | Roof Insulation              | -<br>-<br>- Around drainage<br>Tallet<br>- Penthouse Siding<br>- Roof Ducting<br>- Lobby Skylight<br>- Roof Ducting<br>- Exterior Cooling Tower <del>Flashed</del> |                             | F <sup>4</sup> |   |
| 096      | Penetration Membrane         |  |                             | NF             |   |
| 097      | Roof Patch                   |  |                             |                |   |
| 098      | Caulking - Beige             |  |                             |                |   |
| 099      | HVAC Seal Membrane           |  |                             |                |   |
| 100      | Flashing Membrane            |  |                             |                |   |
| 101      | HVAC Membrane - grey         |  |                             |                |   |
| 102      | Penetration Coating - White  |  |                             |                |   |
| 103      | Roof Core - Built Up Roofing |  | North Building - Lower Roof |                |   |
| 104      | TSI - White                  |  | - Roof Pipe Runs            | D              | F |
| 105      | Parapet Seal Membrane        | - Metal Parapet Cap  | G                           | NF             |   |
| 106      | Roof Core - Built Up Roofing | - Upper Roof Level   | G                           | NF             |   |

Turn Around Requested: **Standard** / 24HR. / RUSH

Chain of Custody (COO)  
 Relinquished by: *[Signature]* Date: 4/30/15 Time: 1:20

Received by: *[Signature]* Date: 05-01-15 Time: 09:40

Analysis: PLM1  
 Results to: Sean@stechconsulting.com

**S  
TECH  
CONSULTING**

484-B Washington Street, #401  
 Monterey, California 93940  
 T 831.883.8415  
 F 831.384.0359  
 info@stechconsulting.com  
 stechconsulting.com

Project: 15070-2

**915051022**

**Asbestos Bulk Sample Log**

| Sample # | Material                          | Sample Location                         | Condition | Friable         |
|----------|-----------------------------------|---|-----------|-----------------|
| 107      | Roof Insulation                   | North Building - upper roof level       | G         | <del>RF</del> F |
| 108      | Penetration Membrane              | - Roof                                  |           | NF              |
| 109      | Flashing/Patch Membrane           | - Roof                                  |           | I               |
| 110      | Roof Insulation                   | - Lower Roof Level                      |           | F               |
| 111      | Roof Core - Built up Roofing      | South Building - Penthouse Roof         |           | NF              |
| 112      | Drywall / Joint Compound/Texture  | South Building Mechanical Penthouse     |           | F               |
| 113      | VFT- 12" x 12" white/Blue w/ glue | North Building - Facility Floor IT Room |           | NF              |
|          |                                   |   |           |                 |
|          |                                   |   |           |                 |
|          |                                   |   |           |                 |
|          |                                   |   |           |                 |
|          |                                   |   |           |                 |
|          |                                   |   |           |                 |

Chain of Custody (COO)  
 Relinquished by: [Signature] Date: 4/30/15 Time: 1500  
 Received by: [Signature] Date: 05.01.15 Time: 0940

Turn Around Requested: Standard / 24HR. / RUSH  
 Analysis: PLM  
 Results to: Sean@stechconsulting.com