

Project / Owner:

SEASIDE FAMILY HEALTH CLINIC
 MONTEREY COUNTY HEALTH DEPT.
 1150 FREMONT STREET
 SEASIDE, CALIFORNIA 92083

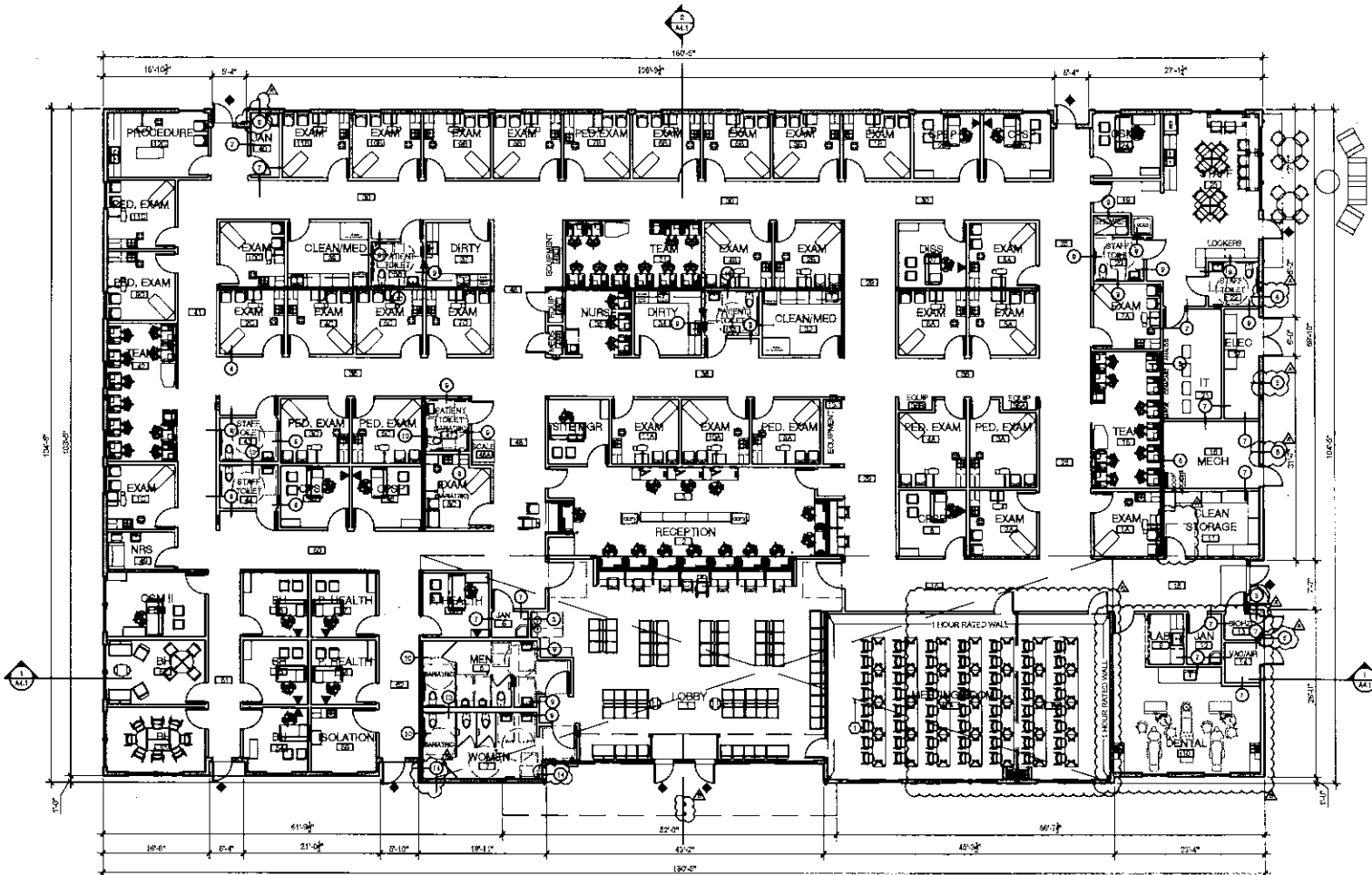
THE PAUL DAVIS PARTNERSHIP
 ARCHITECTS & PLANNERS

The Paul Davis Partnership, L.P.P.
 204 Fairview Street
 Monterey, CA 93908
 (831) 322-2794 FAX (831) 322-7359
 FAX (811) info@pauldavispartnership.com



CONSTRUCTION SET

Drawn By: JHAM
 Drawing Date: 0.06.16
 Project Number: 1483
 2.10.15 - CITY SAR PACKAGE
 4.14.15 - DESIGN DEVELOPMT
 4.27.15 - CITY SAR PACKAGE 2
 5.10.15 - CITY SAR PACKAGE 3
 5.28.15 - BUILDING PERMIT
 PLAN CHECK RESPONSE 4.01.16
 BID SET - 2.01.16
 CONSTRUCTION SET 03.11



OVERALL FLOOR PLAN
 SCALE: 1/8" = 1'-0"

ACCESSIBLE ENTRANCE GENERAL NOTES:

- ALL EXTERIOR ENTRANCES AND EXITS IDENTIFIED WITH A TRIANGULAR SYMBOL (▲) ON THIS PLAN ARE ACCESSIBLE AND COMPLY WITH: 2010 ADA STANDARD, INCLUDING:
 - 502 CLEAR OPENING
 - REQUIRED STRIKE EDGE CLEARANCE AT PULL SIDE OF DOOR (24" FOR FRONT AND LATCH 96" FOR HINGE APPROACH)
 - LEVEL LANDINGS (2% SLOPE MAX ON EXTERIOR SIDE, 0% ON INTERIOR SIDE)
 - ACCESSIBLE THRESHOLD, HARDWARE, CLOSER, KICK PLATE
 - 54" SWING ON EXTERIOR SIDE OF ENTRANCE
 - ALL DOOR CLOSERS TO BE ADJUSTABLE WITH MAX. EFFORT TO OPERATE DOOR PER SECTION 118-404.2
 - A SMOOTH, UNINTERRUPTED SURFACE AT THE BOTTOM OF THE 10" IS REQUIRED AT ALL DOORS PER SECTION 118-404.2.10
 - LEVEL OPERATING SURFACE IS REQUIRED AT ALL OPENINGS PER SECTION 118-500.4
 - DOOR-MOUNTED DOOR STOPS AND SIMILAR OBSTRUCTIONS ARE ALLOWED TO BE INSTALLED AT A MAXIMUM OF FOUR INCHES FROM THE FACE OF THE WALL OR PARTITION PER SECTION 118-507.2
 - EXIT HARDWARE TO BE ACCESSIBLE TYPE AND COMPLY WITH SECTION 1008.1.9 & 118-500.4
 - MAXIMUM HEIGHT OF HAND-ACTIVATED DOOR HARDWARE INCLUDING ALL DEAD BOLTS, SHALL BE MOUNTED BETWEEN 34" AND 48" A.F.F. PER 118-404.2.7

FLOOR PLAN GENERAL NOTES

- ALL ITEMS DESIGNATED ON FLOOR PLAN SHALL BE FURNISHED AND INSTALLED BY CONTRACTOR UNLESS NOTED OTHERWISE
- FURNISH AND INSTALL ALL BACKING AND BLOCKING FOR FUTURE WALL MOUNTED EQUIPMENT AS REQUIRED BY CLIENT
- PERMANENT EQUIPMENT MUST BE SUPPORTED AND ANCHORED TO RESIST THE FORCES DESCRIBED IN SECTION 1810. THE ANCHORAGE SHALL BE APPROVED BY THE APPROPRIATE DESIGN PROFESSIONAL OF RECORD AND SHALL BE INSPECTED BY AN AUTHORITY HAVING JURISDICTION AS PART OF FIELD REVIEWS / OBSERVATIONS
- ALL WALLS PAINTED IN PART, ABOVE TILE OR PRF, OR IN WHOLE, WHETHER INTERIOR OR EXTERIOR, SEE PAINT PLAN FOR INTERIOR WALL PAINT COLORS AND LOCATIONS
- ALL INTERIOR SPACES SHALL HAVE FLOOR FINISH. SEE FLOOR PATTERN PLAN FOR TYPES AND LOCATIONS OF FLOOR FINISH
- ALL "OUTSIDE" CORNERS WITHIN THE FINISHED INTERIOR SPACE SHALL HAVE PARTIAL HEIGHT CORNER GUARDS - SEE DETAIL 15_A&B
- SEE SHEET 06.02 FOR SEMI-RECESSED CABINET LOCATION AND INSTALL IN 1" STUD WALL
- SEE SHEET A6.0 FOR GENERAL ACCESSIBILITY REQUIREMENTS

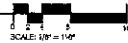
SYMBOL KEY:

- ▲ PLUMB FOR FUTURE SINK/COUNTER W/ ELECTRIC OUTLET AT 4'-0"
- WALL LEGEND: SEE FINISH SCHEDULE AND ARCHITECTURAL & STRUCTURAL WALL DETAILS FOR ADDITIONAL INFORMATION
- TYPICAL MESH STUCCO WALL FINISH - (○) AT EXTERIOR, (○) AT INTERIOR, (○) AT EXTERIOR STUCCO, (○) AT INTERIOR STUCCO
- FINISHED WALL TYPE DETAIL NUMBER ON SHEET A2.1. SEE A2.1 FOR ALL STUCCO WHERE NOT SHOWN ON WALL. PER STRUCT. ENGINEER, SEE A2.1 FOR ALL WOOD DECK WHERE NOT SHOWN ON WALL. PER STRUCT. ENGINEER, SEE A2.1 FOR ALL WOOD DECK WHERE NOT SHOWN ON WALL.

A2.5	A2.3
A2.4	A2.2

KEY PLAN

Sheet Number:
A2.1



PARKING CALCULATION
PER TABLE 8.7 - CITY OF SEASIDE MUNICIPAL CODE:

USE	FACTOR	AREA (S.F.)	SPACES
COMMERCIAL HIGH PARKING DEMAND	1000	10,871	10 (INCLUDING 4 ACCESSIBLE SPACES)
TOTAL PARKING PROVIDED = 108 (INCLUDING 46 STANDARD PARKING SPACES, 1 VAN & ACCESSIBLE SPACES, 6 CLEAN AIR VEHICLE STALLS, 20 COMPACT SPACES, AND 2 MOTORCYCLE SPACES)			

PARKING BREAKDOWN:

- ACCESSIBLE PARKING REQUIREMENT = 1% OF TOTAL PARKING REQUIRED
10 SPACES = 4 ACCESSIBLE SPACES REQUIRED
TOTAL PROVIDED = 4 ACCESSIBLE PARKING SPACES
- COMPACT PARKING REQUIREMENT = 30% OF TOTAL PARKING PROVIDED
30 SPACES = 20 COMPACT SPACES ALLOWED
TOTAL PROVIDED = 20 COMPACT PARKING SPACES
- CAL GREEN EFFICIENT CAR PARKING = 4% OF TOTAL PARKING REQUIRED
34 SPACES = 8 CLEAN AIR VEHICLE SPACES REQUIRED
TOTAL PROVIDED = 8 CLEAN AIR SPACES
- BIKE REQUIREMENT = 6% OF TOTAL PARKING REQUIRED
6 SPACES = 6 BIKE SPACES PROVIDED
TOTAL PROVIDED = 6 BIKE SPACES
- MOTORCYCLE SPACE REQUIREMENT = 1% OF TOTAL PARKING REQUIRED
10 SPACES = 2 MOTORCYCLE SPACES REQUIRED
TOTAL PROVIDED = 2 MOTORCYCLE SPACES

SHEET NOTES

- 60" WIDE WHITE STRIPED ACCESSIBLE ROUTE
- FENCE - SEE LANDSCAPE DRAWINGS FOR DETAILS
- TRUNCATED CONES - SEE PLAN 16042.1
- ENTRY SIGN - SEE LANDSCAPE FOR DETAILS
- PLAYGROUND - SEE LANDSCAPE DRAWINGS
- PARKING SPACE, TYPICAL - SEE CIVIL AND LANDSCAPE DRAWINGS
- PARKING SPACE, MOTORCYCLE - SEE CIVIL AND LANDSCAPE DRAWINGS
- PARKING SPACE, COMPACT - SEE CIVIL AND LANDSCAPE DRAWINGS
- ADA PARKING SPACE - SEE CIVIL AND LANDSCAPE DRAWINGS
- TRASH ENCLOSURE
- POLE TRANSFORMER ON CONCRETE PAD - SEE ELECTRICAL DRAWINGS
- GENERATOR ON CONCRETE PAD - SEE ELECTRICAL DRAWINGS
- BIKE RACKS TO COMPLY WITH CODE 8.10.4. SEE LANDSCAPE DRAWINGS FOR MORE INFO

SITE NOTES:

- SLOPE ALL GRADES AWAY FROM STRUCTURE AT 6% FOR A MIN. OF 100'
- COMPLY WITH REQUIREMENTS AND RECOMMENDATIONS OF THE SOILS REPORT CREATED BY GRACE ENGINEERING.
- PROVIDE UNDERGROUND UTILITIES FOR WATER, UTILITY GAS, TELEVISION, TELEPHONE, COORDINATE WITH UTILITY COMPANIES FOR EXACT LOCATIONS AND REQUIREMENTS.
- USE NEW CONSTRUCTION MAINTAIN EROSION CONTROL BY PLANTING OR OTHER BEST MANAGEMENT PRACTICES. EROSION CONTROL MEASURES SHALL BE IN PLACE THROUGHOUT CONSTRUCTION AND SHALL BE MAINTAINED AS REQUIRED AT THE END OF EACH DAY'S WORK. EXISTING DRAINAGE TO BE MAINTAINED TO APRIL 16, SEE CIVIL DRAWINGS FOR EROSION CONTROL PLAN.
- NO POTABLE WATER MAY BE USED FOR CONSTRUCTION OR DUST CONTROL PURPOSES IN CONSTRUCTION ACTIVITIES WHERE THERE IS A REASONABLE AND FEASIBLE SOURCE OF DISINFECTED OTHER SUB POTABLE WATER APPROVED BY THE MONTEREY COUNTY HEALTH DEPARTMENT AND APPROPRIATE FOR SUCH USE.
- NO PERSON MAY TAKE TO ANY TIME PERMIT FOR ANY PURPOSE OTHER THAN FOR THE SUPPRESSION OF EMERGENCY AND WITHOUT FIRST OBTAINING WRITTEN APPROVAL FROM THE WATER PURVEYOR SUPPLYING WATER TO THE PROJECT AND FROM THE MONTEREY COUNTY HEALTH DEPARTMENT.
- ALL HOLES IN CONNECTION WITH ANY CONSTRUCTION ACTIVITIES SHALL BE EQUIPPED WITH A RAIN-CAP NOZZLE. WHEN AN AUTOMATIC STOPPER NOZZLE CAN BE PURCHASED OR OBTAINED DRAWING FOR THE SIZE OR TYPE OF HOLES IN USE. THE NOZZLE SHALL BE AN ALTERNATING HALF NOZZLE.
- A COPY OF ALL FIELD REPORTS/COMPARISON TESTS AND FINAL GRADING REPORTS SHALL BE SUBMITTED TO THE CITY AT 50% SCALE D IMPROVEMENTS.
- PAID ELEVATIONS SHALL BE DETERMINED TO 0.1 FEET, PRIOR TO DIGGING EXCAVATIONS OR SPECIAL INSPECTIONS
- FOUNDATIONS/PADS FOR ALL ON-SITE EQUIPMENT AND ACCESSORIES INCLUDING TRASH ENCLOSURE, GENERATOR AND FUEL TANK AND TRANSFORMERS SHALL BE CONSTRUCTED PER STRUCTURAL ENGINEER OR MANUFACTURERS INSTRUCTIONS.

Project / Owner
SEASIDE FAMILY HEALTH CLINIC
MONTEREY COUNTY HEALTH DEPT.
1150 FREMONT STREET
SEASIDE, CALIFORNIA 92095

THE PAUL DAVIS PARTNERSHIP
ARCHITECTS & PLANNERS

The Paul Davis Partnership, 127
284 Elmwood Street
Redwood City, CA 94061
PHONE: 770-278-7450 FAX: 770-278-7459
DUDU@pauldavispartnership.com



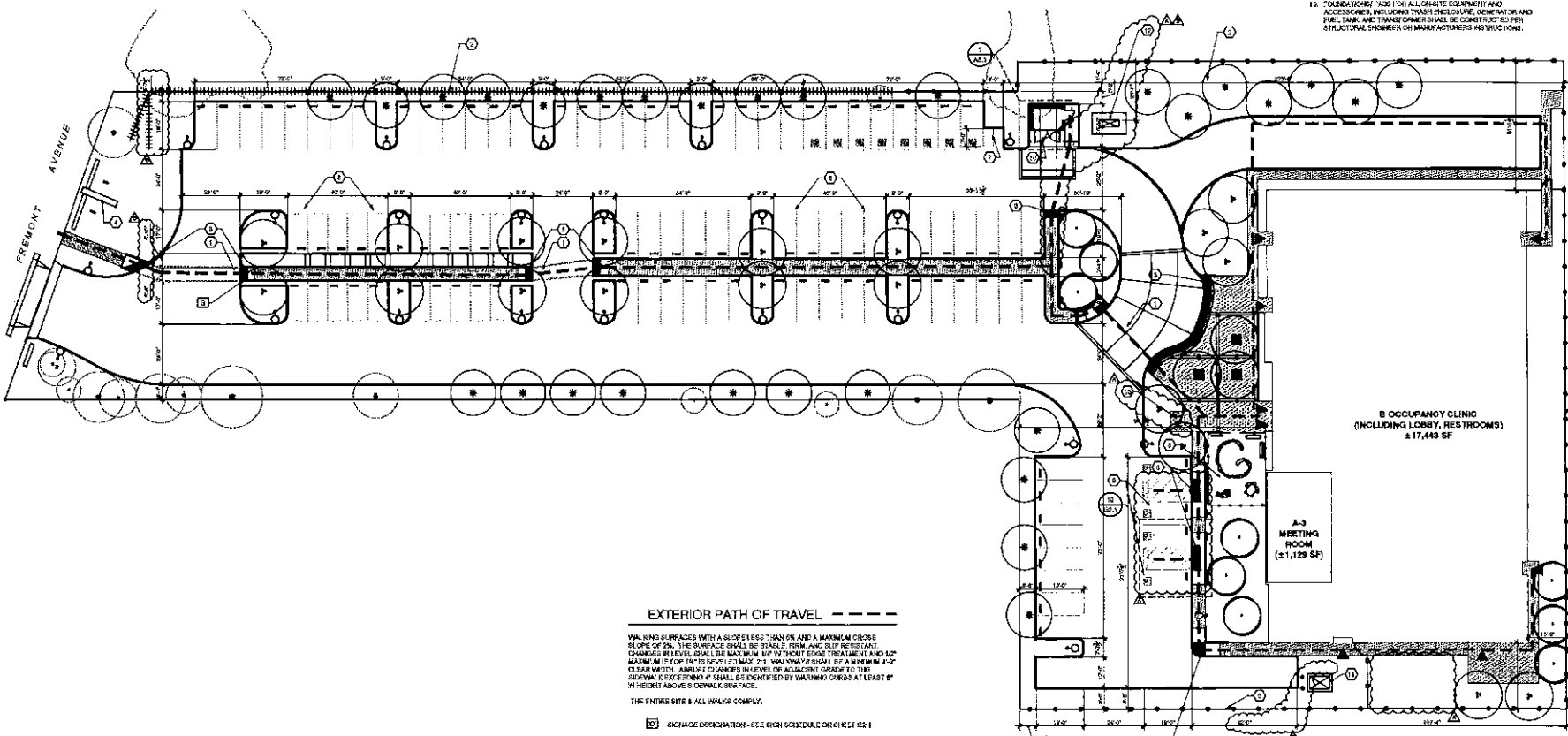
Sheet No: 104A
Drawing Date: 0.05.16
Project Number: 1460
2.10.15 - CITY BAR PACKAGE
4.14.15 - DESIGN DEVELOPMENT
4.21.15 - CITY BAR PACKAGE C
5.10.15 - CITY BAR PACKAGE D
8.02.15 - BUILDING PERMIT

PLAN CHECK RESPONSE: 4.28.15
REV SET: 04.11.16
REVISION 02.15
CONSTRUCTION SET 0.28.16

CONSTRUCTION SET

Sheet No:
SITE PLAN

Sheet Number:



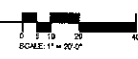
EXTERIOR PATH OF TRAVEL - - - - -

WALKING SURFACES WITH A SLOPE LESS THAN ON AND A MAXIMUM CROSS SLOPE OF 2%. THE SURFACE SHALL BE STABLE, FIRM AND SLIP RESISTANT. CHANGES IN ELEVATION SHALL BE MAXIMUM 1/4" OUTSIDE EDGE TRIANGLE AND 1/2" MAXIMUM IF FOR 10" TO 18" BEVELLED MAX. 2:1. WALKWAYS SHALL BE A MINIMUM 4'-0" CLEAR WIDTH. ABILITY CHANGES IN LEVEL OR ADJACENT GRADES TO THE SIDEWALK EXCEEDING 4" SHALL BE IDENTIFIED BY WALKING CURBS AT LEAST 1" IN HEIGHT ABOVE SIDEWALK SURFACE.

THE ENTIRE SITE SHALL WALKER COMPLY.

- SIGNAGE DESIGNATION - SEE SIGN SCHEDULE ON SHEET 102.1
- ▲ ACCESSIBLE ENTRIES - SEE DETAIL W403

SITE PLAN
SCALE: 1" = 20'-0"



A1.1