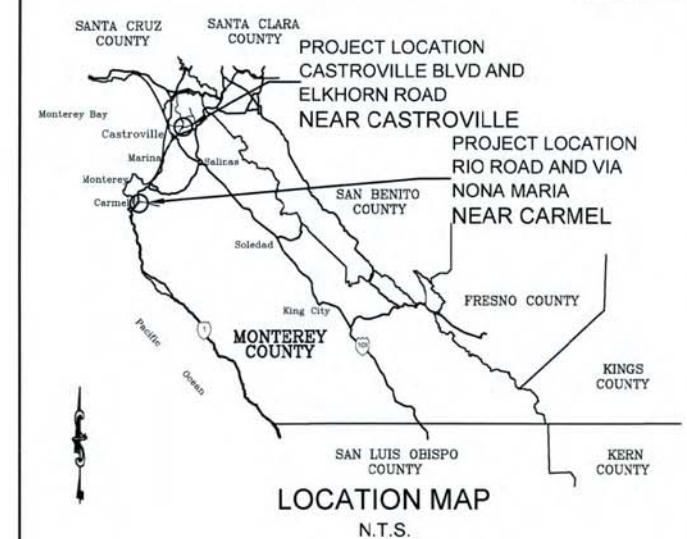


SHEET NO.	SHEET TOTAL
1	3

**COUNTY OF MONTEREY**  
 STATE OF CALIFORNIA  
**DEPARTMENT OF PUBLIC WORKS**  
 PROJECT PLANS FOR CONSTRUCTION OF  
**RECTANGULAR RAPID FLASHING BEACONS (RRFB'S)**  
 AT  
**CASTROVILLE BLVD / ELKHORN ROAD**  
 AND  
**RIO ROAD / VIA NONA MARIE**  
**PROJECT NO. HSIPL-5944(132)**

TO BE SUPPLEMENTED BY CALTRANS STANDARD SPECIFICATIONS AND STANDARD PLANS  
DATED MAY 2015, INCLUDING ISSUED ADDENDA



**INDEX OF SHEETS:**

- 1 TITLE SHEET
- 2 RRFB - CASTROVILLE BLVD AND ELKHORN ROAD
- 3 RRFB - RIO ROAD AND VIA NONA MARIA

**ABBREVIATIONS:**

SEE CALTRANS STANDARD PLANS AND SPECIFICATIONS FOR ADDITIONAL ABBREVIATIONS.

- EX EXISTING
- LF LINEAR FEET
- TYP TYPICAL
- RRFB RECTANGULAR RAPID FLASHING BEACONS
- WNW WEST NORTH WEST

**GENERAL NOTES:**

1. ALL WORK SHALL BE DONE IN CONFORMANCE WITH THE 2015 EDITIONS OF THE CALIFORNIA DEPARTMENT OF TRANSPORTATION (CALTRANS) STANDARD PLANS AND SPECIFICATIONS WITH REVISIONS, THE LATEST EDITION OF THE CALIFORNIA MUTCD WITH REVISIONS, AND THE PROJECT SPECIAL PROVISIONS.
2. ALL EQUIPMENT SHALL BE APPROVED BY THE ENGINEER.
3. REPLACE EXISTING IMPROVEMENTS AS NEEDED.
4. UNLESS NOTED, PULLBOXES ARE CALTRANS NO. 5 WITH TRAFFIC RATED LIDS MARKED TRAFFIC SIGNAL OR SERVICE AS APPROPRIATE.

**LEGEND:**

- NEW RRFB SIGNAL WITH S1-1 SIGN OR W16-7P SIGN
- SOLAR ELECTROLIER

**RRFB NOTES:**

1. EQUIPMENT SHALL BE INSTALLED ON A CALTRANS STANDARD TYPE 1B (MIN 11') POLE.
2. RRFB'S SHALL BE SOLAR PANEL SIZED FOR THE ANTICIPATED SOLAR EXPOSURE AND USAGE DEMAND.
3. PRODUCT SHALL BE CARMANAH R920-E OR APPROVED EQUAL.
4. PEDESTRIAN PUSH BUTTONS SHALL MEET ADA, TITLE 24, AND CALTRANS STANDARDS.

**EXCAVATION NOTES:**

CONTRACTOR SHALL COMPLY WITH THE REQUIREMENTS OF GOVERNMENT CODE SECTION 4216 CONCERNING PROTECTION OF UNDERGROUND INFRASTRUCTURE. IMPORTANT REQUIREMENTS OF THE LAW INCLUDE:

- OUTLINE YOUR EXCAVATION AREA WITH WHITE PAINT [4216.2A]
- CALL UNDERGROUND SERVICE ALERT AT 811 TWO WORKING DAYS BEFORE YOU DIG [4216.2A]
- THE USA REQUEST NUMBER IS VALID FOR 14 CALENDAR DAYS. IF YOUR EXCAVATION EXTENDS BEYOND THAT, YOU MUST CONTACT USA EVERY 14 DAYS [4216.E]
- KEEP THE USA REQUEST NUMBER TO VALIDATE YOUR EXCAVATION PERMIT [4216.9A]
- USA WILL NOTIFY ITS MEMBERS OF YOUR EXCAVATION [4216.2C]
- THE USA MEMBERS WILL PROVIDE INFORMATION ABOUT, MARK OR STAKE THE HORIZONTAL PATH OF THEIR FACILITIES, OR WILL ADVISE OF CLEARANCE [4216.3A]
- EXPOSE THE UNDERGROUND FACILITIES BY HAND BEFORE USING POWER EQUIPMENT [4216.4a]

THE CONTRACTOR SHALL POSSESS THE CLASS (OR CLASSES) OF LICENSE AS SPECIFIED IN THE "NOTICE TO BIDDERS."

APPROVED BY MONTEREY COUNTY  
 BY ACTION OF THE BOARD OF SUPERVISORS  
 APPROVED ON \_\_\_\_\_  
 PER BOARD ORDER NO. \_\_\_\_\_  
 \_\_\_\_\_  
 CARL P. HOLM DATE \_\_\_\_\_  
 RESOURCE MANAGEMENT AGENCY DIRECTOR

Monterey County rrrfb 2020-05-18.dwg

5/19/2007

SUBMITTED BY	
DESIGN BY, LBF	CHKD BY, BV
DRAWN BY, LBF	CHKD BY, BV
SPECIFICATIONS WRITTEN BY, LBF	CHKD BY, BV
APPROVAL RECOMMENDED BY	



DATE *May 19, 2020*

NO.	DATE	REVISION	APPROVED



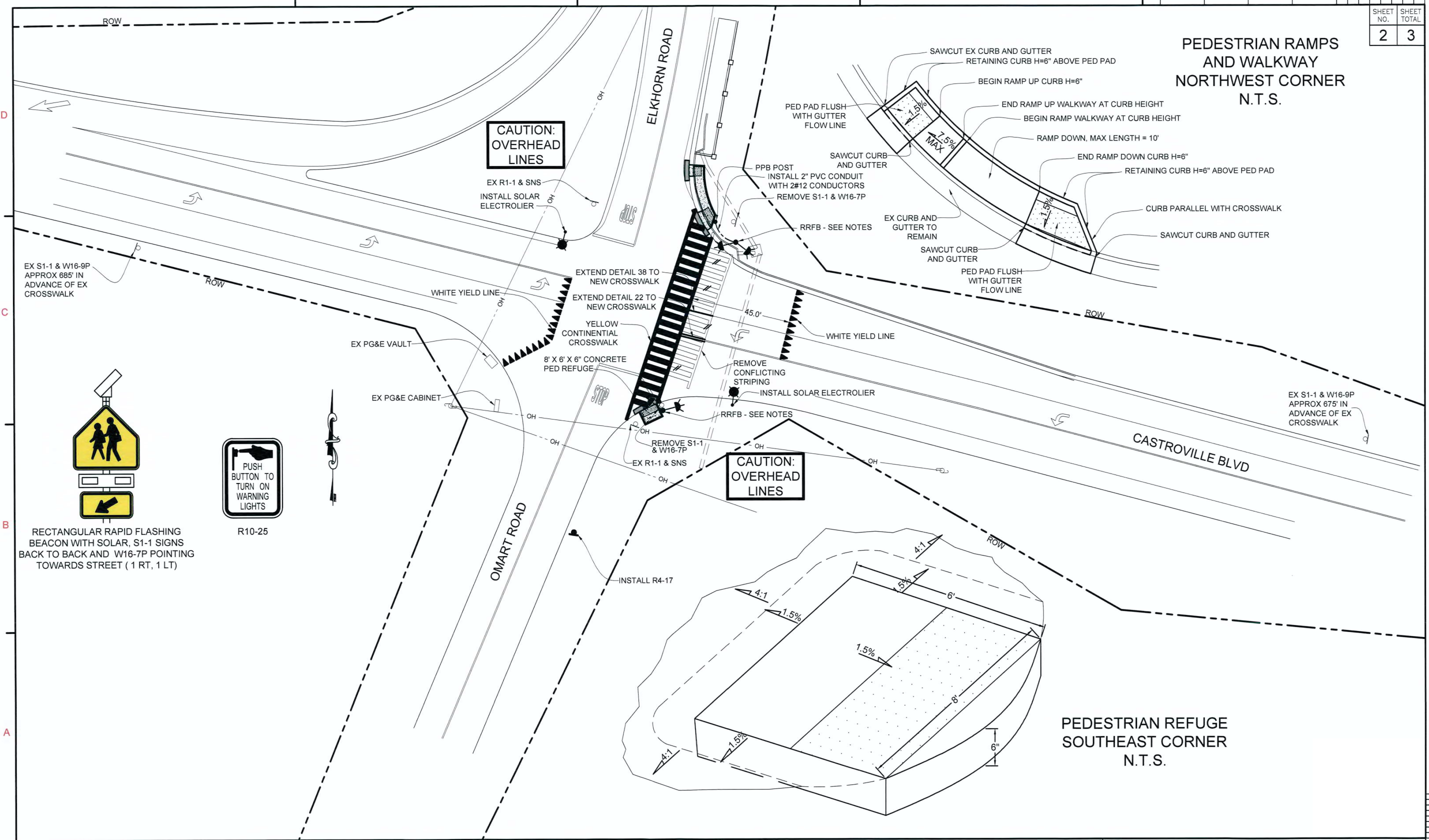
COUNTY OF MONTEREY  
 RESOURCE MANAGEMENT AGENCY  
 DEPARTMENT OF PUBLIC WORKS  
 1441 SCHILLING PLACE, 2ND FLOOR  
 SALINAS, CALIFORNIA 93901-2680  
 (831) 755-4800/FAX (831) 755-4958

RRFB'S AT CASTROVILLE BLVD / ELKHORN ROAD AND RIO ROAD / VIA NONA MARIE		
<b>TITLE SHEET</b>		
DATE 02/22/2020	DRAWING	SHEET 1 OF 3
SCALE N/A	VIEW	

0 INCH 1

**PEDESTRIAN RAMPS AND WALKWAY  
NORTHWEST CORNER  
N.T.S.**

**PEDESTRIAN REFUGE  
SOUTHEAST CORNER  
N.T.S.**



Monterey County RFP# 2020-05-18.dwg

5/19/2020/

SUBMITTED BY	
DESIGN BY, LBF	CHKD BY, BV
DRAWN BY, LBF	CHKD BY, BV
SPECIFICATIONS WRITTEN BY, LBF	CHKD BY, BV
APPROVAL RECOMMENDED BY	

DATE *May 19, 2020*

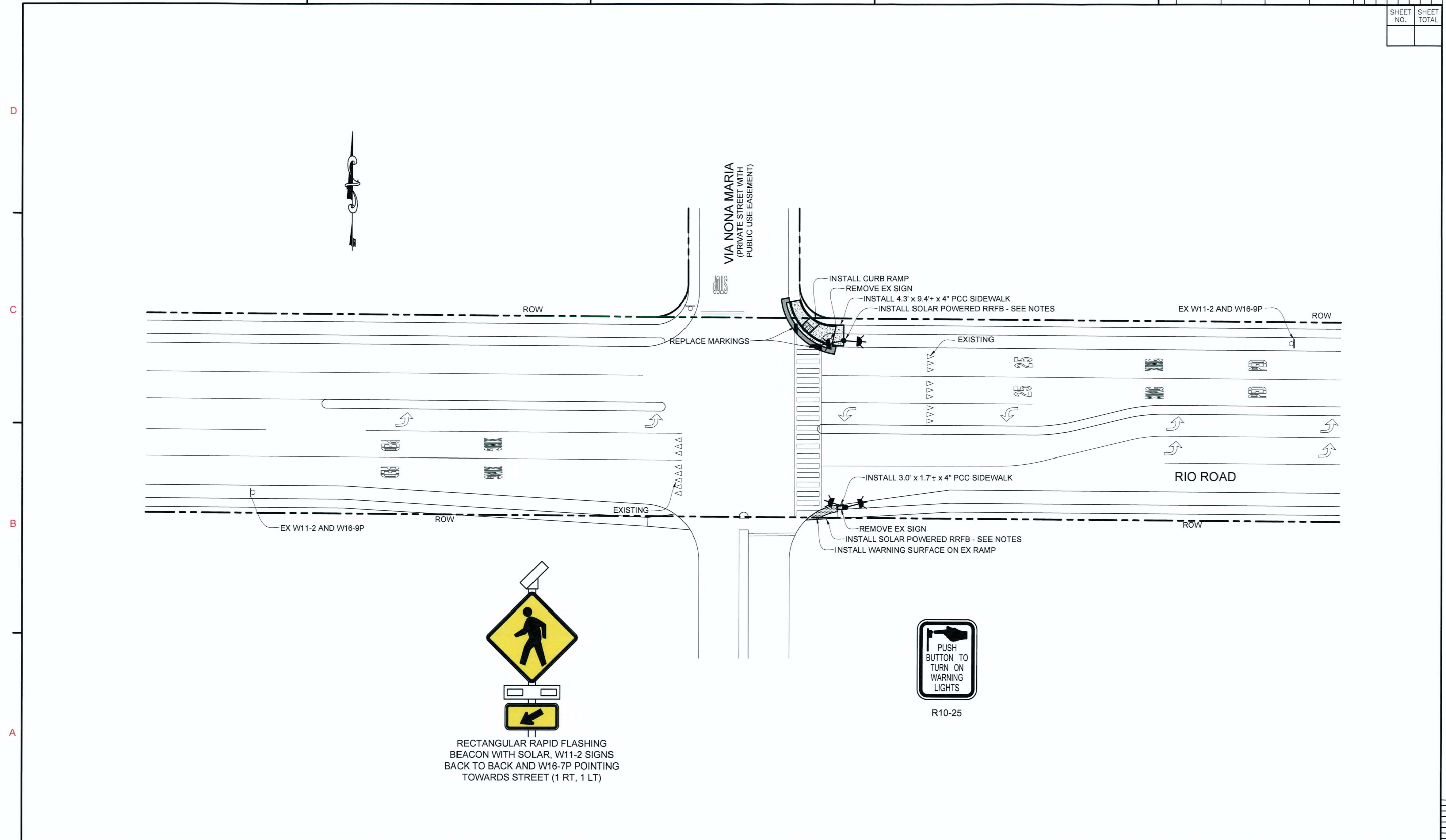
NO.	DATE	REVISION	APPROVED
▲			
▲			
▲			
▲			

**COUNTY OF MONTEREY**  
 RESOURCE MANAGEMENT AGENCY  
 DEPARTMENT OF PUBLIC WORKS  
 1441 SCHILLING PLACE, 2ND FLOOR  
 SALINAS, CALIFORNIA 93901-2680  
 (831) 755-4800/FAX (831) 755-4958

RRFB'S AT CASTROVILLE BLVD / ELKHORN ROAD AND AT RIO ROAD / VIA NONA MARIE		
RRFB SIGNAL - CASTROVILLE BLVD & ELKHORN ROAD		
DATE	DRAWING	SHEET
04/22/2020		2 OF 3
SCALE	VIEW	
N/A		

0 INCH 1

SHEET NO.	SHEET TOTAL



Monterey County RRFB 2020-05-18.dwg

5/19/2007

SUBMITTED BY	
DESIGN BY, BV	CHKD BY, BV
DRAWN BY, BV	CHKD BY, BV
SPECIFICATIONS WRITTEN BY, BV	CHKD BY, BV
APPROVAL RECOMMENDED BY	



DATE *May 19, 2020*

NO.	DATE	REVISION	APPROVED
▲			
▲			
▲			
▲			



COUNTY OF MONTEREY  
RESOURCE MANAGEMENT AGENCY  
DEPARTMENT OF PUBLIC WORKS

1441 SCHILLING PLACE, 2ND FLOOR  
SALINAS, CALIFORNIA 93901-2680  
(831) 755-4800/FAX (831) 755-4958

RRFB'S AT CASTROVILLE BLVD / ELKHORN ROAD AND AT RIO ROAD / VIA NONA MARIE		
RRFB - RIO ROAD & VIA NONA MARIE		
DATE	DRAWING	SHEET
02/22/2020	VIEW	3 OF 3
SCALE		
N/A		

0 INCH 1