



Monterey County - Public Works, Facilities, and Parks - 1441 Schilling Place 2nd Floor Salinas, California 93901

Job Order Contract

Job Order Authorization (JOA) Package

Date: 05/19/2026

County Project Manager: Luis Ochoa

Job Order Title: 1410 Natividad Rd-Monterey County Jail Electrical Emergency Repairs Supplemental 1- Lighting

Job Order Number: JF02-24-14-J8552-01

Contractor: Staples Construction Company

Project Manager: Tom Scheel

Base Amount: \$336,903.41

Base Gordian Fee: \$16,845.17

CM Fee (if applicable): \$0.00

Total Project Cost: \$353,748.58

This JOA Package Includes:

1. **Job Order Authorization (Signature page)**
2. **Notice to Proceed (Signature page)**
3. **Client Authorization Form (Signature page)**
4. **Final Scope of Work (Signature page)**
5. **Contractors Price Proposal Summary & Detail (Signature page)**
6. **Subcontractor List**
7. **CSLB & DIR Public Works Contractor Registration Search**
8. **JOC Authorization Form - Attachment 1**
9. **Project Initiation Form**
10. **Project Managers Budget Sheet**



Monterey County - Public Works, Facilities, and Parks

1441 Schilling Place 2nd Floor
Salinas, California 93901

Job Order Authorization

Job Order Contract

Date: May 14, 2026

Contractor: Staples Construction Company

Contract Number: JOC FACILITIES 2024-02

Job Order Number: JF02-24-14-J8552-01

Delivery Order Number: 475-1210-8408-6613

Job Order Title: 1410 Natividad Rd-Monterey County Jail Electrical Emergency Repairs Supplemental 1-Lighting

County Project Manager: Luis Ochoa

Brief Description of the Work

Replacement of different lights and some pieces of equipment that were damaged as a result of the electrical outage that occurred on July 15, 2025

Firm Fixed Price of Job Order

\$336,903.41

Approvals

County Project Manager

Date

Finance

Date

Division Chief

Date

Director of Public Works, Facilities, and Parks

Date

Attachments:

1. Contractor's Price Proposal
2. Final Scope of Work



Monterey County - Public Works, Facilities, and Parks

1441 Schilling Place 2nd Floor
Salinas, California 93901

Job Order Notice to Proceed

Job Order Contract

Date: May 19, 2026

Tom Scheel
Staples Construction Company, Inc.
1501 Eastman Ave.
Ventura, CA 93003

Job Order Number: JF02-24-14-J8552-01

Job Order Title: 1410 Natividad Rd-Monterey County Jail Electrical Emergency Repairs Supplemental 1- Lighting

County Project Manager: Luis Ochoa

This letter establishes **May 20, 2026** as the official date for the commencement of work for the above referenced job order, in accordance with Job Order Contract **JOC FACILITIES 2024-02**. All the required work under this job order shall be completed in **94 Calendar Days**. This will be on or before **August 21, 2026**.

Please direct any questions to the Project Manager Luis Ochoa at (310) 773-0589.

Luis Ochoa, Capital Improvement Manager

Date



Monterey County - Public Works, Facilities, and Parks

1441 Schilling Place 2nd Floor
Salinas, California 93901

TGG License Fee

Job Order Contract

Date: May 14, 2026

Subject: JF02-24-14-J8552-01

Reference: Professional Services Agreement approved by Board of Supervisors.

Scope of Job Order

Replacement of different lights and some pieces of equipment that were damaged as a result of the electrical outage that occurred on July 15, 2025

Firm Fixed Price of Job Order

\$336,903.41

License Fee for Above Referenced Job Order

\$16,845.17

GORDIAN INVOICE NOT INCLUDED. INVOICE TO FOLLOW AT END OF THE MONTH

Monterey County - Public Works, Facilities, and Parks

1441 Schilling Place 2nd Floor
Salinas, California 93901



Date: 5/11/2026

Final Scope of Work

Job Order Contracting

To: Tom Scheel
Staples Construction Company, Inc.
1501 Eastman Ave.
Ventura, CA 93003
(805) 658-8786
tgjertsen1@staplesconstruction.com

From: Luis Ochoa
Monterey County - Public Works, Facilities, and
Parks
1441 Schilling Place
2nd Floor
Salinas, CA 93901
(310) 773-0589
OchoaL3@countyofmonterey.gov

Contract Number: JOC FACILITIES 2024-02

Job Order Number: JF02-24-14-J8552-01

Job Order Title: 1410 Natividad Rd-Monterey County Jail Electrical Emergency Repairs Supplemental 1-Lighting

Location: 1410 Natividad MCSO
1410 Natividad Rd
Salinas, CA 93901

Brief Scope of Work: Replacement of different lights and some pieces of equipment that were damaged as a result of the electrical outage that occurred on July 15, 2025

The following items detail the scope of work as discussed at the site. All requirements necessary to accomplish the items set forth below shall be considered part of this scope of work.

Scope of Work:

- Replacement of lights not working in pipe chases and interior spaces on all floors within the new County Jail Facility. See attached MCJ lights plan with locations circled in red.
- Replacement of one exterior pole light. See the below aerial map and photograph attached.
- Background Check: JOC Contractor and construction crew will not be assigned badges. Because this is a detention facility, everyone will be escorted in and out of the County Jail. Once, the Contractor is ready to move forward with work, we will need to obtain government issued ID with a photograph for everyone that will need enter the facility, and the Sheriff Office will run a background check for all individuals in the construction crew.

General Conditions:

- Work to be performed during regular work hours.
- OSHA work practices to be maintained for all work activities.
- No Liquidated Damages applied

Attachments:

1. MCJ lights plan - Collins Electrical notes
2. County Facility Aerial Map (Exterior Pole Location Notated in Red)

Tom Scheel

Tom Scheel, Regional Manager

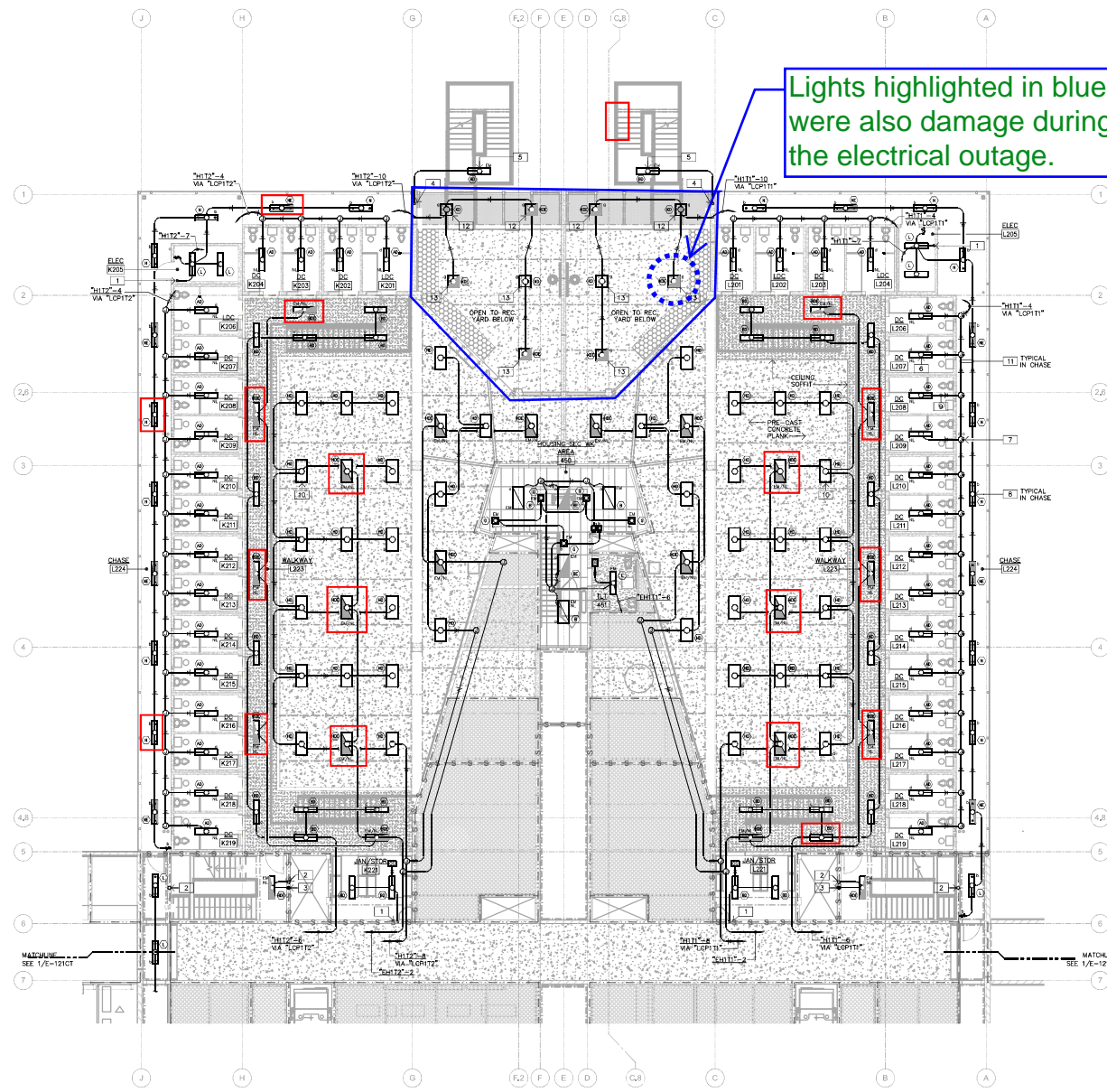
5/13/2026

Date

Luis Ochoa, Capital Improvement Manager

Date

IF THIS SHEET IS NOT PLACED WITH A REDUCED PRINT SCALE ACCORDINGLY



1 LIGHTING PLAN - LEVEL 1 UPPER TIER - AREA 'B'
SCALE 1/8" = 1'-0"

SHEET KEY NOTES

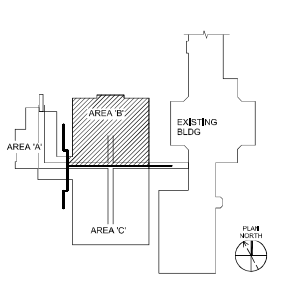
- 1 DOWN TO LIGHTS AT LOWER LEVEL. SEE SHEET E-121B FOR CONTINUATION.
- 2 UP TO STAR LIGHT AT LEVEL 2. SEE SHEET E-122B FOR CONTINUATION.
- 3 DOWN TO STAR LIGHT AT LOWER LEVEL. SEE SHEET E-121B FOR CONTINUATION.
- 4 UP TO EXTERIOR LIGHT AT LEVEL 2. SEE SHEET E-122B FOR CONTINUATION.
- 5 INSTALL LIGHT FIXTURE AT UNDERSIDE OF LANDING
- 6 INSTALL FIXTURE OUTLET BOX CONCEALED IN PRE-CAST CONCRETE LID FOR SURFACE MOUNTED LIGHT FIXTURE. TYPICAL. SEE 5/E-515.
- 7 INSTALL JUNCTION BOX FLOOR IN CONCRETE LID CLEAR OF ANY OBSTRUCTIONS. COORDINATE LOCATION WITH ALL CONTRACTORS PRIOR TO PRE-CAST. INSTALL SURFACE EXTENSION BOX AND EXTEND WITH SURFACE CONDUIT IN CHASE AS SHOWN. TYPICAL. SEE 5/E-515.
- 8 PENDANT MOUNT LIGHT FIXTURE. CLEAR OF ALL DUCT WORK AND PLUMBING LINES. SUSPEND DOWN SO THAT BOTTOM OF LIGHT FIXTURE IS ALIGNED WITH BOTTOM OF DUCT WORK AND PLUMBING LINES. COORDINATE LOCATION IN FIELD. SEE 5/E-515.
- 9 INSTALL CONDUIT CONCEALED IN PRE-CAST CONCRETE LID. TYPICAL.
- 10 INSTALL LIGHT FIXTURE TO SURFACE MOUNTED OUTLET BOX. SEE 3/E-515 FOR MOUNTING DETAIL. DASH LINE INDICATES DIRECTION OF U-CHANNEL SUPPORT TYPICAL.
- 11 GROUP AND RACK ALL SURFACE CONDUITS TOGETHER. COORDINATE LOCATION IN FIELD. SEE 5/E-515 FOR MOUNTING DETAIL.
- 12 INSTALL LIGHT FIXTURE TO SURFACE MOUNTED OUTLET BOX. SEE 4/E-515 FOR MOUNTING DETAIL. MOUNT OUTLET BOX TO STEEL PLATE. DASH LINE INDICATES DIRECTION OF U-CHANNEL SUPPORT. TYPICAL.
- 13 MOUNTING SHALL BE SIMILAR TO SHEET KEY NOTE 10 EXCEPT 2X2' LIGHT FIXTURE.

RFI-0482:
Lighting Circuits at Stairs

WALL TYPE - NOTES AND LEGEND

- REFER TO EXTERIOR ELEVATIONS FOR EXTERIOR WALL FINISHES
REFER TO PARTITION TYPES AND SCHEDULE SHEET A-611 FOR SPECIFIC WALL TYPE INFORMATION
- METAL STUD WALL
20 GA. MINIMUM METAL STUDS UNLESS OTHERWISE NOTED AT 16" OC
SEE PART 1 FOR PARTITION TYPES AND SCHEDULE
 - CMU WALL
NUMERICAL CONCRETE MASONRY UNIT WALLS GROUTED SOLE FOR WALL JOINT SEE DET.
 - PRECAST CONCRETE WALLS FOR PRECAST PANEL JOINTS SEE DET.
 - 2 HR. RATED FIRE BARRIER WALL, 34MIN OPENING PROTECTION, 2 HOUR FIRE RESISTANCE FOR SMOKE/STRAIN ASSEMBLY AND 1 1/2 HR. RATED GLAZING BARRIER.
 - 2 HR. RATED FIRE SMOKE BARRIER WALL, 34MIN OPENING PROTECTION, 2 HOUR FIRE RESISTANCE FOR SMOKE/STRAIN ASSEMBLY AND 1 1/2 HR. RATED GLAZING BARRIER.
 - 1 HR. FIRE BARRIER WALL, 34MIN OPENING PROTECTION, 15MIN FIRE-RESISTANCE FOR SMOKE/STRAIN ASSEMBLY, 1 1/2 HR. RATED GLAZING BARRIER.
 - 1 HR. SMOKE BARRIER WALL, 34MIN OPENING PROTECTION, 45MIN FIRE PROTECTION OR 15MIN FIRE-RESISTANCE FOR SMOKE/STRAIN ASSEMBLY AND 1 1/2 HR. RATED GLAZING BARRIER.
 - 1 HR. FIRE BARRIER WALL, 34MIN OPENING PROTECTION, 45MIN FIRE-RESISTANCE FOR SMOKE/STRAIN ASSEMBLY, 1 1/2 HR. RATED GLAZING BARRIER.

KEY PLAN



LIONAKIS
1919 Mission Street
San Francisco, CA 94111
P: 415.774.2500 F: 415.774.2510
www.lionakis.com

CONSULTANT
KEN RUBINSTEIN & ASSOC.
CONSULTING ELECTRICAL ENGINEERS
100 S. First, Redwood, California 94068-0001-0007
KRAJOS #14019

PROJECT
MONTEREY JAIL HOUSING ADDITION

1410 NatMad Road
SALINAS, CA 93906

CLIENT
MONTEREY COUNTY JAIL

FINAL CONSTRUCTION DOCUMENTS 12/12/16

ISSUED	MARK	DATE	DESCRIPTION
A	10/20/16	10/20/2016	SOB REVIEW TO SOB
B	10/20/16	10/20/2016	1 1/2 HR PARTY FIRE REVIEW
C	10/20/16	10/20/2016	SOB APPROVAL TO ADVERTISE FOR BID

MANAGEMENT
ISSUED PROJECT NO: 012398
CLIENT PROJECT NO: 6919
DRAWN BY: BS
CHECKED BY: BS
CONTRACT NO: 1600003-0010

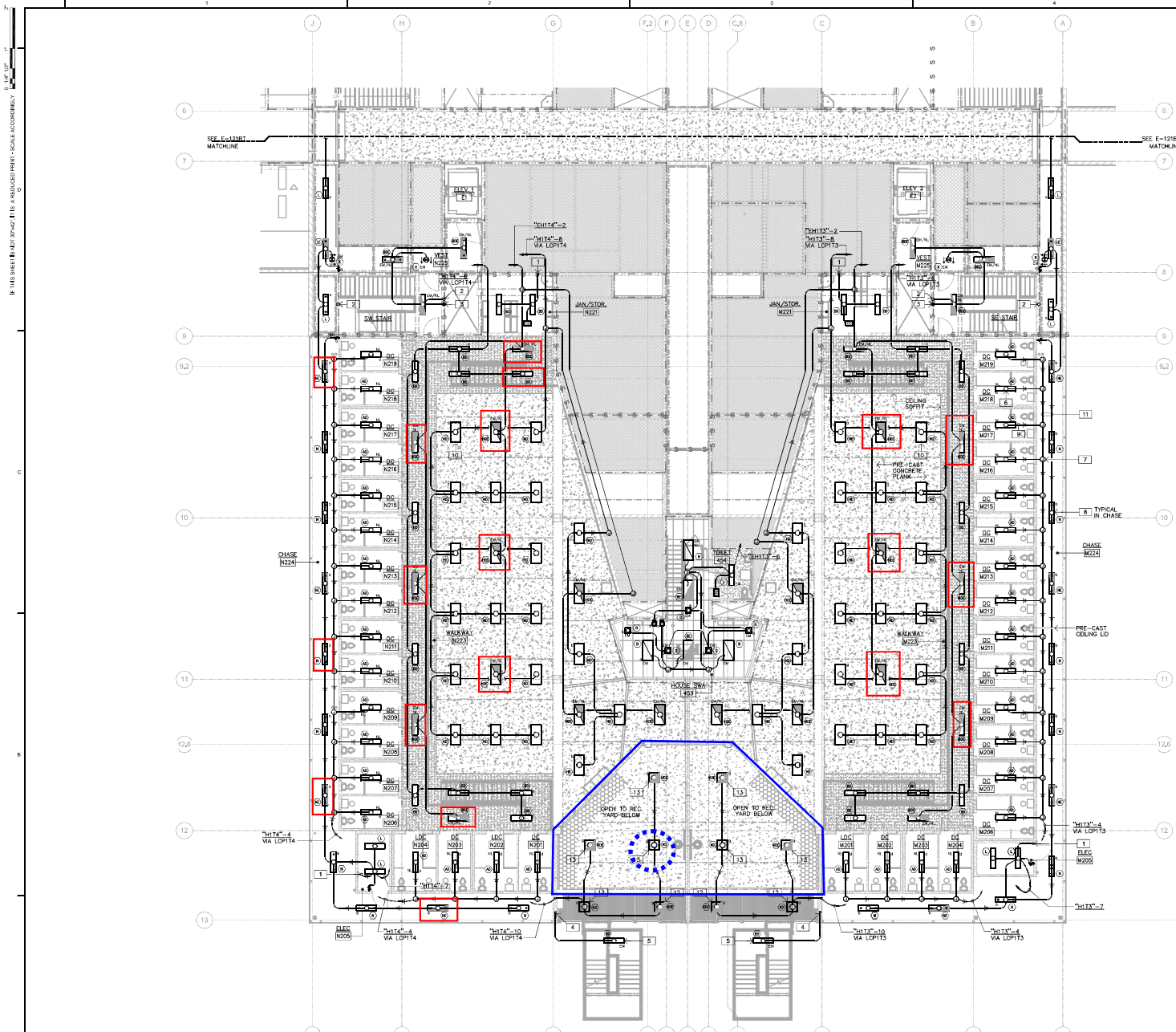
AGENCY APPROVAL
AGENCY: 48900
CALIFORNIA STATE FIRE MARSHAL APPROVED

Approved in this plan does not authorize or approve any addition or modification to the applicable regulations. Final approval is subject to all inspections. One set of approved drawings shall be available on the project for all time.
Reviewed by:

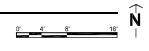
VOLUME 3 OF 4

TITLE
LIGHTING PLAN - LEVEL 1 - UPPER TIER - AREA 'B'

SHEET
E-121BT



1 LIGHTING PLAN - LEVEL 1 UPPER TIER - AREA 'C'
SCALE: 1/8" = 1'-0"



SHEET KEY NOTES

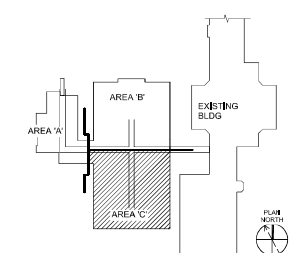
- 1 DOWN TO LIGHTS AT LOWER LEVEL. SEE SHEET E-121B FOR CONTINUATION.
- 2 UP TO STAR LIGHT AT LEVEL 2. SEE SHEET E-122B FOR CONTINUATION.
- 3 DOWN TO STAR LIGHT AT LOWER LEVEL. SEE SHEET E-121B FOR CONTINUATION.
- 4 UP TO EXTERIOR LIGHT AT LEVEL 2. SEE SHEET E-122B FOR CONTINUATION.
- 5 INSTALL LIGHT FIXTURE AT UNDERSIDE OF LANDING
- 6 INSTALL LIGHT FIXTURE OUTLET BOX FLUSH IN PRE-CAST CONCRETE LID FOR SURFACE MOUNTED LIGHT FIXTURE. TYPICAL. SEE 5/E-515.
- 7 INSTALL JUNCTION BOX FLUSH IN CONCRETE LID CLEAR OF ANY OBSTRUCTIONS. COORDINATE WITH ALL CONTRACTORS PRIOR TO PRE-CAST. INSTALL SURFACE EXTENSION BOX AND EXTEND WITH SURFACE CONDUIT IN CHASE AS SHOWN. TYPICAL. SEE 5/E-515.
- 8 PENDANT MOUNT LIGHT FIXTURE CLEAR OF ALL DUCT WORK AND PLUMBING LINES. SUSPEND DOWN SO THAT BOTTOM OF LIGHT FIXTURE IS ALIGNED WITH BOTTOM OF DUCT WORK AND PLUMBING LINES. COORDINATE LOCATION IN FIELD. SEE 5/E-515.
- 9 INSTALL CONDUIT CONCEALED IN PRE-CAST CONCRETE LID. TYPICAL.
- 10 INSTALL LIGHT FIXTURE TO SURFACE MOUNTED OUTLET BOX. SEE 3/E-515 FOR MOUNTING DETAIL. DASH LINE INDICATES DIRECTION OF U-CHANNEL SUPPORT TYPICAL.
- 11 GROUP AND RACK ALL SURFACE CONDUITS TOGETHER. COORDINATE LOCATION IN FIELD. SEE 5/E-515 FOR MOUNTING DETAIL.
- 12 INSTALL LIGHT FIXTURE TO SURFACE MOUNTED OUTLET BOX. SEE 4/E-515 FOR MOUNTING DETAIL. MOUNT OUTLET BOX TO STEEL PLATE. DASH LINE INDICATES DIRECTION OF U-CHANNEL SUPPORT. TYPICAL.
- 13 MOUNTING SHALL BE SIMILAR TO SHEET KEY NOTE 10 EXCEPT 2X2' LIGHT FIXTURE.

RFI-0482:
Lighting Circuits at Stairs

WALL TYPE - NOTES AND LEGEND

- REFER TO EXTERIOR ELEVATIONS FOR EXTERIOR WALL FINISHES
REFER TO PARTITION TYPES AND SCHEDULE SHEET A-611 FOR SPECIFIC WALL TYPE INFORMATION
- METAL STUD WALL
20 GA MINIMUM METAL STUDS UNLESS OTHERWISE NOTED AT 16" OC
SEE PART 5 FOR PARTITION TYPES AND SCHEDULES
 - CMU WALL
NUMERICAL CONCRETE MASONRY TYPE WALLS GROUTED SOULS FOR WALL JOINT SEE DET.
 - PRECAST CONCRETE WALLS FOR PRECAST PANEL JOINTS SEE DET.
 - 2 HR. RATED FIRE BARRIER WALL SWAIN OPENING PROTECTION 2 HOUR FIRE RESISTANCE FOR SILENT TRANSMISSION ASSEMBLY AND 1 HR. RATED GLAZING MARKING
 - 2 HR. RATED FIRE BARRIER WALL SWAIN OPENING PROTECTION 2 HOUR FIRE RESISTANCE FOR SILENT TRANSMISSION ASSEMBLY AND 1 HR. RATED GLAZING MARKING
 - 1 HR. RATED FIRE BARRIER WALL SWAIN OPENING PROTECTION 1 HOUR FIRE RESISTANCE FOR SILENT TRANSMISSION ASSEMBLY AND 1 HR. RATED GLAZING MARKING
 - 1 HR. SMOKE BARRIER WALL SWAIN OPENING PROTECTION 45 MIN FIRE PROTECTION OR SILENT TRANSMISSION ASSEMBLY AND 1 HR. RATED GLAZING MARKING
 - 1 HR. SMOKE BARRIER WALL SWAIN OPENING PROTECTION 45 MIN OR 45 MIN SILENT TRANSMISSION ASSEMBLY AND 1 HR. RATED GLAZING MARKING

KEY PLAN



LIONAKIS
1919 Redwood Street
San Francisco, CA 94111
www.lionakis.com

CONSULTANT
KEN RUMINSKY & ASSOC.
CONSULTING ELECTRICAL ENGINEERS
100 S. Street, Hayward, California 94542-4477
KRAJOS #14019

PROJECT
MONTEREY JAIL HOUSING ADDITION

1410 NatMadra Road
SALINAS, CA 93906

CURT: MONTEREY COUNTY JAIL

ISSUED

MARK	DATE	DESCRIPTION
A	10/20/2016	ISSUED FOR PERMIT
B	10/27/2016	10% PARTY PERMIT REVIEW
C	12/02/2016	80% APPROVAL TO ADVISORY FOR IFC

FINAL CONSTRUCTION DOCUMENTS 12/12/2016

MANAGEMENT

ISSUED PROJECT NO.	012398
CLIENT PROJECT NO.	6919
DRAWN BY:	BS
CHECKED BY:	BS
DATE:	12/02/2016

AGENCY APPROVAL

CALIFORNIA STATE FIRE MARSHAL APPROVED

Approved as this plan does not constitute approval or approval of any construction or installation of any electrical equipment. This approval is subject to all applicable regulations. One set of approved drawings shall be available on the project for all times.

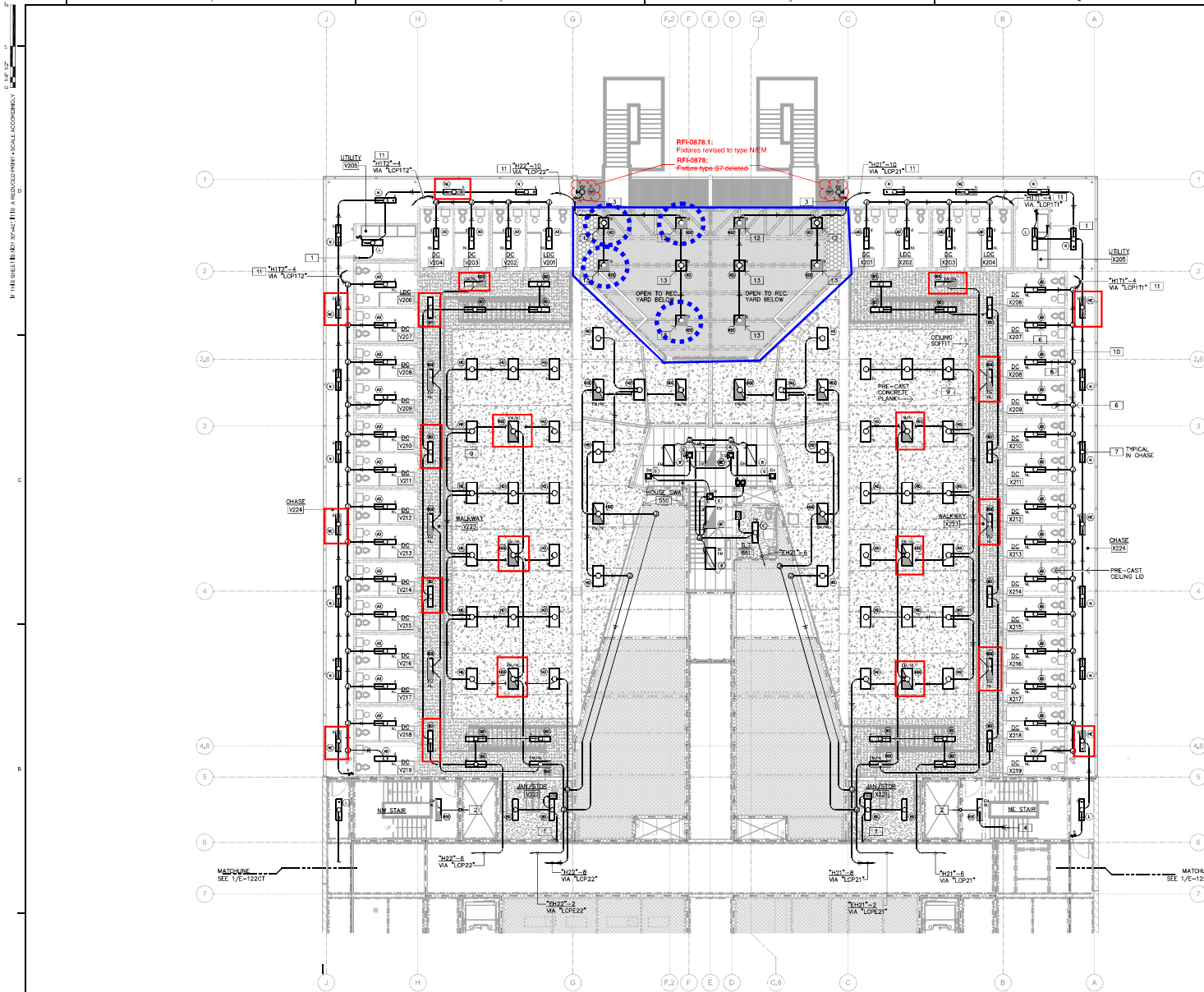
Reviewed by:

VOLUME 3 OF 4

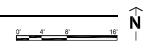
TITLE
LIGHTING PLAN - LEVEL 1 - UPPER TIER - AREA 'C'

SHEET
E-121CT

These drawings and all other material appearing hereon are the property of Ken Rakitky & Associates and may not be duplicated, used or disclosed without the written consent of Ken Rakitky.



1 LIGHTING PLAN - LEVEL 2 UPPER TIER - AREA 'B'
SCALE: 1/8" = 1'-0"



SHEET KEY NOTES

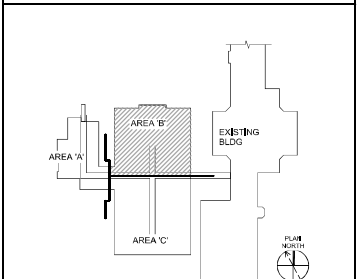
- 1 DOWN TO LIGHT AT LEVEL 2. SEE SHEET E-122B FOR CONTINUATION.
- 2 DOWN TO STAIR LIGHT AT LEVEL 2. SEE SHEET E-122B FOR CONTINUATION.
- 3 DOWN TO EXTERIOR LIGHT AT LEVEL 2. SEE SHEET E-122B FOR CONTINUATION.
- 4 UP TO ROOF LIGHTING. SEE SHEET E-131B FOR CONTINUATION.
- 5 INSTALL FIXTURE OUTLET BOX FLUSH IN PRE-CAST CONCRETE LD FOR SURFACE MOUNTED LIGHT FIXTURE. TYPICAL.
- 6 INSTALL OUTLET BOX FLUSH IN CONCRETE LID CLEAR OF ANY OBSTRUCTIONS. COORDINATE WITH ALL CONTRACTORS PRIOR TO PRE-CAST. INSTALL SURFACE EXTENSION BOX AND EXTEND WITH CONDUIT AS SHOWN. TYPICAL.
- 7 PENDANT MOUNT LIGHT FIXTURES CLEAR OF ALL DUCT WORK AND PLUMBING LINES. SUSPEND DOWN SO THAT BOTTOM OF LIGHT FIXTURE IS ALIGNED WITH BOTTOM OF DUCT WORK AND PLUMBING LINES. COORDINATE LOCATION IN FIELD.
- 8 INSTALL CONDUIT CONCEALED IN PRE-CAST CONCRETE LID. TYPICAL.
- 9 INSTALL LIGHT FIXTURE TO SURFACE MOUNTED OUTLET BOX. DASHED LINES INDICATE DIRECTION OF U-CHANNEL SUPPORT. SEE 3/E-515 FOR MOUNTING DETAIL. TYPICAL.
- 10 GROUP AND RACK ALL SURFACE CONDUITS. COORDINATE LOCATION IN FIELD. SEE 1/E-514 FOR MOUNTING DETAIL.
- 11 ROUTE CONDUIT DOWN WITHIN UTILITY ROOM THROUGH FLOOR TO ELECTRICAL ROOM BELOW. COORDINATE WITH PRE-CAST CONTRACTOR.
- 12 MOUNTING SHALL BE SIMILAR TO DETAIL 4/E-515 WELD 2" SQ. X 3/8" THK STEEL PLATE TO BOTTOM OF HSS 5X5X5/8 WEB MEMBER.
- 13 MOUNTING SHALL BE SIMILAR TO DETAIL 4/E-515 EXCEPT WELD 2" SQ. X 3/8" THK STEEL PLATE TO BOTTOM OF WEAK3 BEAM.

RFI-0482:
Lighting Circuits at Stairs

WALL TYPE - NOTES AND LEGEND

- REFER TO EXTERIOR ELEVATION FOR EXTERIOR WALL FINISHES
REFER TO PARTITION TYPES AND SCHEDULE SHEET A611 FOR SPECIFIC WALL TYPE INFORMATION.
- METAL STUD WALL
20 GA. MINIMUM METAL STUDS UNLESS OTHERWISE NOTED AT 16" OC
SEE A611 FOR PARTITION TYPES AND SCHEDULE.
 - CONCRETE WALL
NON-FINISHED CONCRETE MASONRY OR PRECAST CONCRETE SOUL FOR WALL JOINT SEE DET.
 - PRECAST CONCRETE WALL FOR PRECAST PANEL JOINTS SEE DET.
 - 1 HR. RATED FIRE BARRIER WALL, 15-MIN. OPENING PROTECTION, 1 HOUR FIRE RESISTANCE FOR SHIELDING TRANSMISSION ASSEMBLY AND 1/2" RATED GLAZING BARRIERS.
 - 2 HR. RATED FIRE BARRIER WALL, 15-MIN. OPENING PROTECTION, 2 HOUR FIRE RESISTANCE FOR SHIELDING TRANSMISSION ASSEMBLY AND 1/2" RATED GLAZING BARRIERS.
 - 1 HR. FIRE BARRIER WALL, 15-MIN. OPENING PROTECTION, 15-MIN. FIRE-RATED GLAZING TRANSMISSION ASSEMBLY, 15-MIN. RATED GLAZING BARRIERS.
 - 1 HR. SMOKE BARRIER WALL, 15-MIN. OPENING PROTECTION, 15-MIN. RATED GLAZING TRANSMISSION ASSEMBLY, 15-MIN. RATED GLAZING BARRIERS.
 - 1 HR. FIRE BARRIER WALL, 15-MIN. OPENING PROTECTION, 15-MIN. RATED GLAZING TRANSMISSION ASSEMBLY, 15-MIN. RATED GLAZING BARRIERS.

KEY PLAN



REVISION	MARK	DATE	DESCRIPTION
A	10/20/2016	10/20/2016	ISSUE FOR PERMIT REVIEW
B	10/27/2016	11/02/2016	1-CD PARTY PERMIT REVIEW
C	12/02/2016	02/02/2017	ISSUE APPROVAL TO ADVERTISE FOR BID

FINAL CONSTRUCTION DOCUMENTS 11/30/2016

MANAGEMENT
ISSUED PROJECT NO: 012338
CLIENT PROJECT NO: 6919
DRAWN BY: BS
CHECKED BY: BS
DATE: 11/30/16
AGENCY: ARBO
CALIFORNIA STATE FIRE MARSHAL APPROVED

Approval of this plan does not constitute or approve any condition or condition not specifically mentioned. This approval is subject to all instructions. One set of approved drawings shall be available on the project site at all times.
Reviewed by:

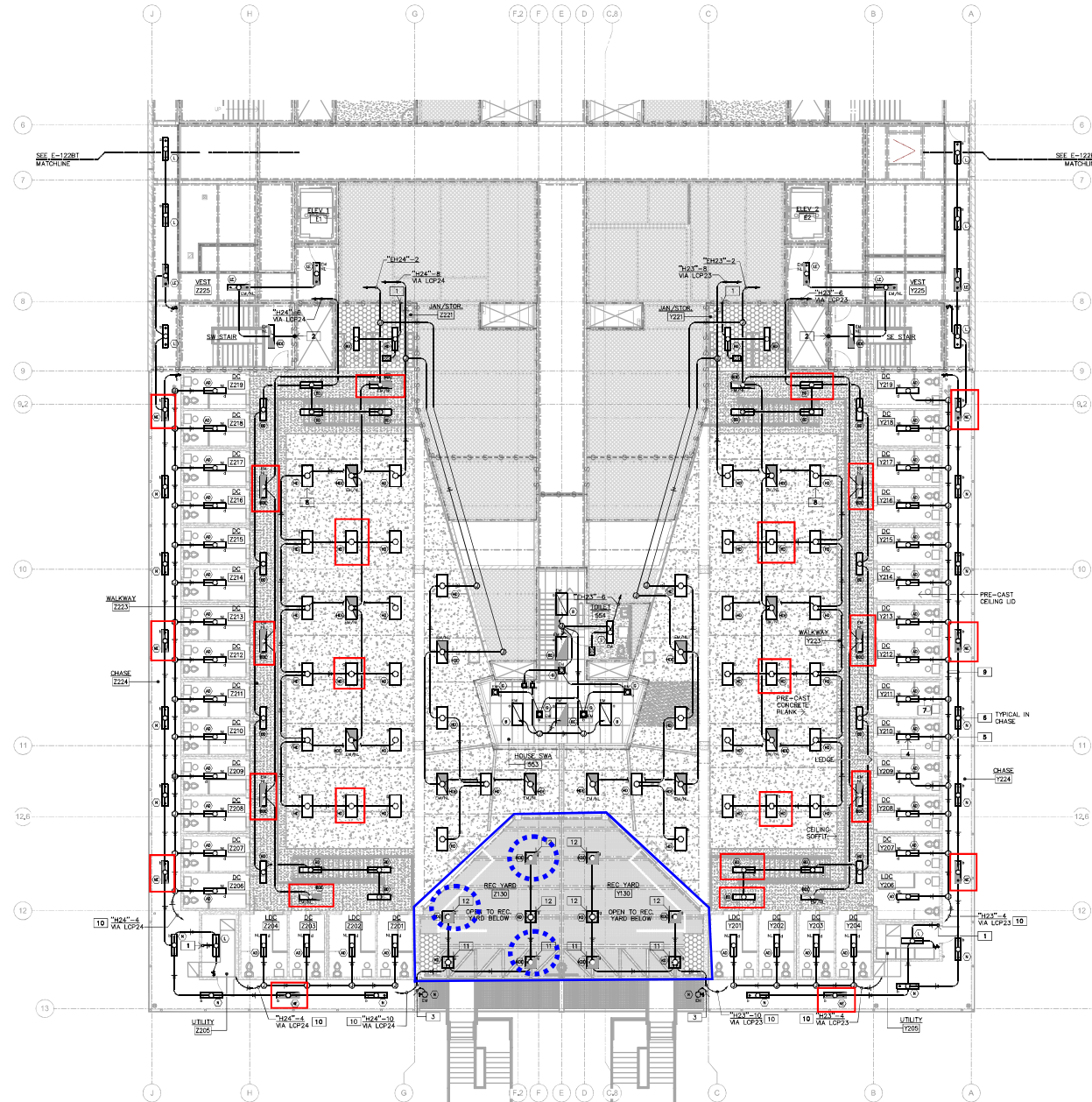
VOLUME 3 OF 4

TITLE
LIGHTING PLAN - LEVEL 2 - UPPER TIER - AREA 'B'

SHEET
E-122BT

IF THIS SHEET IS NOT PLACED WITH A RELATED PRINT, SCALE ACCORDINGLY

IF THIS SHEET IS NOT PLACED IN ITS PROPOSED PRINT SCALE ACCORDINGLY



1 LIGHTING PLAN - LEVEL 2 UPPER TIER - AREA 'C'
SCALE: 1/8" = 1'-0"

SHEET KEY NOTES

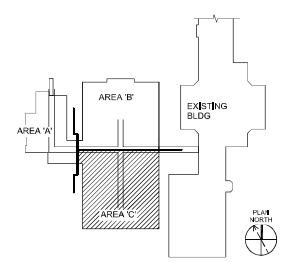
- 1 DOWN TO LIGHTS AT LOWER LEVEL. SEE SHEET E-122C FOR CONTINUATION.
- 2 DOWN TO STAIR LIGHT AT LEVEL 2. SEE SHEET E-122C FOR CONTINUATION.
- 3 DOWN TO EXTERIOR LIGHT AT LEVEL 2. SEE SHEET E-122C FOR CONTINUATION.
- 4 INSTALL FIXTURE OUTLET BOX FLUSH IN PRE-CAST CONCRETE LID FOR SURFACE MOUNTED LIGHT FIXTURE. TYPICAL. SEE 5/E-515.
- 5 INSTALL JUNCTION BOX FLUSH IN CONCRETE LID CLEAR OF ANY OBSTRUCTIONS. COORDINATE LOCATION WITH ALL CONTRACTORS PRIOR TO PRE-CAST. INSTALL SURFACE EXTENSION BOX AND EXTEND WITH SURFACE CONDUIT IN CHASE AS SHOWN. TYPICAL. SEE 5/E-515.
- 6 PENDANT MOUNT LIGHT FIXTURE CLEAR OF ALL DUCT WORK AND PLUMBING LINES. SLOPPING DOWN SO THAT BOTTOM OF LIGHT FIXTURE IS ALIGNED WITH BOTTOM OF DUCT WORK AND PLUMBING LINES. COORDINATE LOCATION IN FIELD. SEE 5/E-515.
- 7 INSTALL CONDUIT CONCEALED IN PRE-CAST CONCRETE LID. TYPICAL.
- 8 INSTALL LIGHT FIXTURE TO SURFACE MOUNTED OUTLET BOX. SEE 5/E-515 FOR MOUNTING DETAIL. DASHED LINES INDICATE DIRECTION OF CHIMNEL SUPPORT. TYPICAL.
- 9 GROUP AND RACK ALL SURFACE CONDUITS TOGETHER. COORDINATE LOCATION IN FIELD. SEE 5/E-515 FOR MOUNTING DETAIL.
- 10 ROUTE CONDUIT DOWN WITHIN UTILITY ROOM THROUGH FLOOR TO ELECTRICAL ROOM BELOW. COORDINATE CONDUIT CHASE WITH PRE-CAST CONTRACTOR.
- 11 MOUNTING SHALL BE SIMILAR TO DETAIL 4/E-515 WELD 2" SQ. X 3/8" THK STEEL PLATE TO BOTTOM OF HES 30X5X1/2 WEB MEMBER.
- 12 MOUNTING SHALL BE SIMILAR TO DETAIL 4/E-515 EXCEPT WELD 2" SQ. X 3/8" THK STEEL PLATE TO BOTTOM OF W8X31 BEAM.

RFI-0482:
Lighting Circuits at Stairs

WALL TYPE - NOTES AND LEGEND

- REFER TO EXTERIOR ELEVATIONS FOR EXTERIOR WALL FINISHES
REFER TO PARTITION TYPES AND SCHEDULE SHEET A411 FOR SPECIFIC WALL TYPE INFORMATION
- METAL STUD WALL
 - 20 GA MINIMUM METAL STUDS UNLESS OTHERWISE NOTED AT 16" OC SET BACK FOR PARTITION TYPES IN SCHEDULE.
 - CMU WALL
 - NUMERICAL CONCRETE MASONRY (CMU) WALLS GRADED SOILS FOR WALL JOINT SEE DET.
 - PRECAST CONCRETE WALL FOR PRECAST PANEL JOINTS SEE DET.
 - 2 HR. RATED FIRE RADIANT WALL SWAIN OPENING PROTECTION 2 HOUR FIRE RESISTANCE FOR BULLETPROOF ASSEMBLY AND 1-HR. RATED GLAZING BARRIERS.
 - 2 HR. RATED FIRE SMOKE BARRIER WALL SWAIN OPENING PROTECTION 2 HOUR FIRE RESISTANCE FOR BULLETPROOF ASSEMBLY AND 1-HR. RATED GLAZING BARRIERS.
 - 1 HR. RATED FIRE SMOKE BARRIER WALL SWAIN OPENING PROTECTION 45MIN FIRE RESISTANCE FOR BULLETPROOF ASSEMBLY AND 1-HR. RATED GLAZING BARRIERS.
 - 1 HR. SMOKE BARRIER WALL SWAIN OPENING PROTECTION 45MIN FIRE PROTECTION OR BULLETPROOF ASSEMBLY AND 1-HR. RATED GLAZING BARRIERS.
 - 1 HR. RATED FIRE SMOKE BARRIER WALL SWAIN OPENING PROTECTION 45MIN FIRE RESISTANCE FOR BULLETPROOF ASSEMBLY AND 1-HR. RATED GLAZING BARRIERS.

KEY PLAN



LIONAKIS
1919 Research Blvd
San Ramon, CA 94583
PH: (925) 391-9199
www.lionakis.com

CONSULTANT
KEM RUNITSKY & ASSOC.
CONSULTING ELECTRICAL ENGINEERS
100 S. Street, Hayward, California 94541-0817
KRAJOS #14019



PROJECT: **MONTEREY JAIL HOUSING ADDITION**
1410 Natkidad Road
SALINAS, CA 93806

CURT: MONTEREY COUNTY JAIL

ISSUED

MARK	DATE	DESCRIPTION
A	10/22/2016	SUBMITTER'S SET
B	10/27/2016	THIRD PARTY REVIEW
C	10/28/2016	EOS APPROVAL TO ADVERTISE FOR BID

FINAL CONSTRUCTION DOCUMENTS 12/12/2016

MANAGEMENT

ISSUED PROJECT NO.	012398
CLIENT PROJECT NO.	6919
DESIGN BY:	
DESIGNED BY:	
CHECKED BY:	
AGENCY APPROV:	

CALIFORNIA STATE FIRE MARSHAL APPROVED

Approved as this plan does not constitute approval or certification of any design or construction work applicable regulations. This approval is subject to all instructions. One set of approved drawings shall be available on the project for all times.

Reviewed by: _____

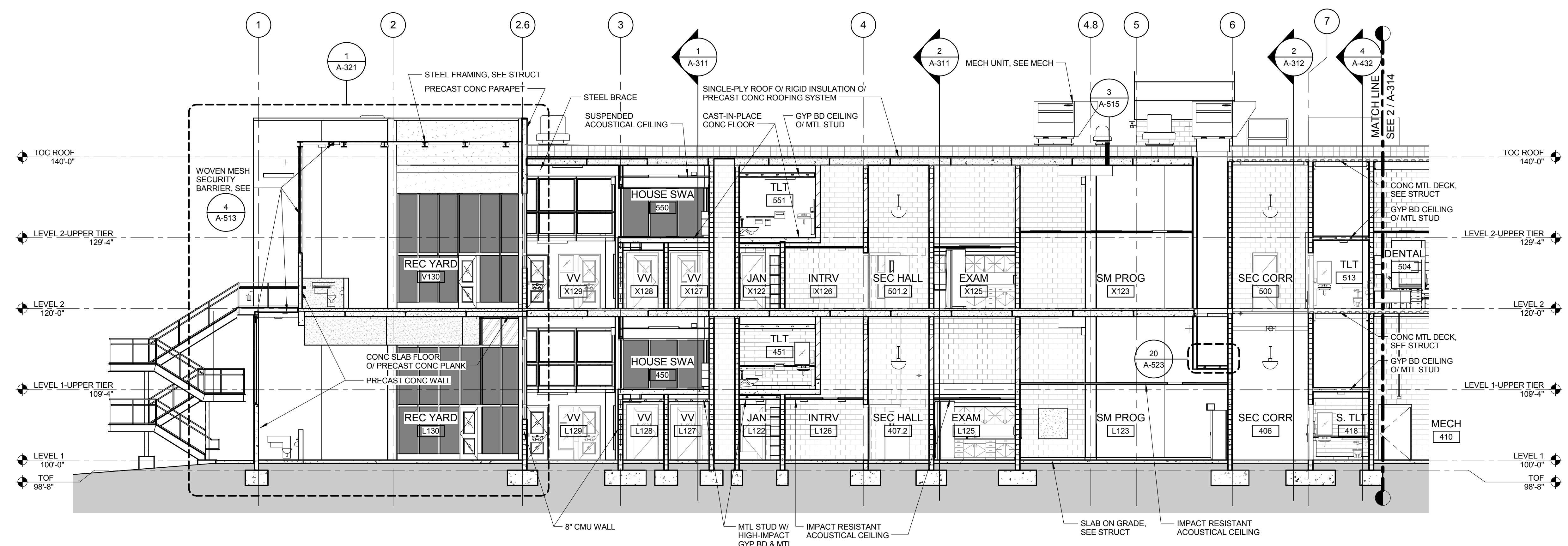
VOLUME 3 OF 4

TITLE: **LIGHTING PLAN - LEVEL 2 - UPPER TIER - AREA 'C'**

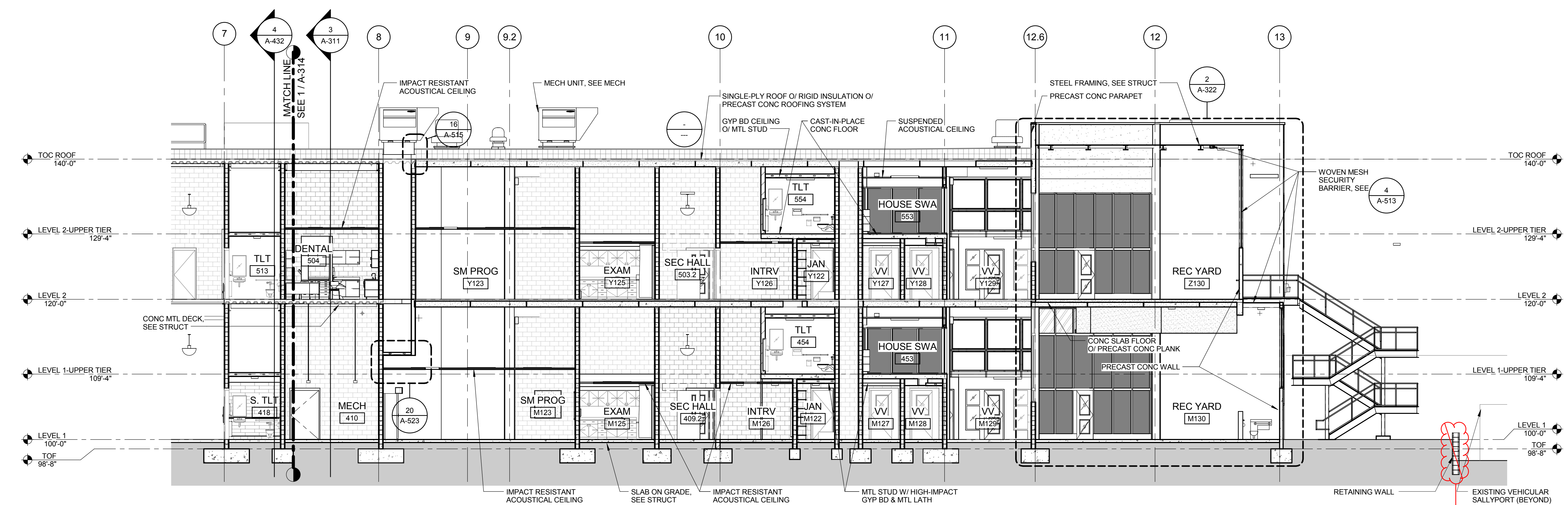
SHEET: **E-122CT**

These drawings and all other material appearing hereon are the property of Ken Runitsky & Associates and may not be duplicated, used or disclosed without the written consent of Ken Runitsky & Associates.

K:\PROJECTS\1410 NATKIDAD RD\120716.dwg 10/28/2016 8:11 AM

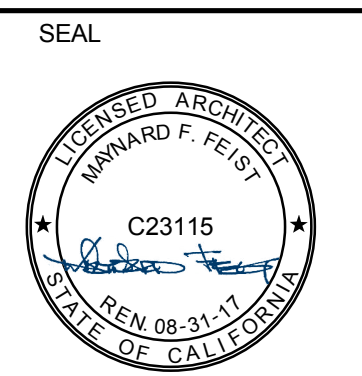


1 BUILDING SECTION
 SCALE 1/8" = 1'-0"



2 BUILDING SECTION
 SCALE 1/8" = 1'-0"

RFI-066:
 Retaining wall not required.
 To be curb per C-5.2



PROJECT
MONTEREY JAIL HOUSING ADDITION

1410 Natividad Road
 SALINAS, CA 93906

CLIENT
 MONTEREY COUNTY JAIL

MARK	DATE	DESCRIPTION
A	8/17/2016	SUBMISSION TO SFM
B	10/27/2016	THIRD PARTY PERMIT REVIEW, 2ND REVIEW
C	12/06/2016	BOS APPROVAL TO ADVERTISE FOR BID

FINAL CONSTRUCTION DOCUMENTS 12/12/2016

MANAGEMENT

LIONAKIS PROJECT NO:	012398
CLIENT PROJECT NO:	8819
DRAWN BY:	Author
CHECKED BY:	Checker
COPYRIGHT:	LIONAKIS 2015

AGENCY
 AB900

CALIFORNIA STATE FIRE MARSHAL APPROVED

Approval of this plan does not authorize or approve any omission or deviation from applicable regulations. Final approval is subject to field inspections. One set of approved plans shall be available on the project site at all times.

Reviewed by: _____

VOLUME 2 OR 4

TITLE
BUILDING SECTIONS

SHEET
A-314

12/02/2016 10:37:47 AM C:\Users\george.williams\Documents\012398_BM_MASTER_RTL_CENTRAL_groge.williams.rvt 0.145"=1'-0" IF THIS SHEET IS NOT 30"x42", IT IS A REDUCED PRINT - SCALE ACCORDINGLY

Price Proposal Package Detail Report



By Division

Catalog: June 2024 - Monterey County, Facilities

Version: 2.0

Job Order: JF02-24-14-J8552-01

Approved

Job Order Name: 1410 Natividad Rd-Monterey County Jail Electrical
Emergency Repairs Supplemental 1- Lighting

Proposal Value: \$336,903.41

Approved Date: May 11, 2026

Location: 1410 Natividad MCSO 1410 Natividad Rd Salinas, CA 93901

Contractor: Staples Construction Company

Contract Number: JOC FACILITIES 2024-02

Contract Name: FAC 2024-02 - Staples

Division		Install Total	NPP Total	Demo Total	Division Total
26	Electrical	\$0.00	\$336,903.41	\$0.00	\$336,903.41
Line Count: 1		<i>Proposal Total: \$336,903.41</i>		Proposal Total:	\$336,903.41

The Percentage of Non Pre-Priced on this Proposal:

100.0%

Tom Scheel

Tom Scheel, Regional Manager

5/13/2026

Date

Luis Ochoa, Capital Improvement Manager

Date

Price Proposal Package Detail Report



By Division

Catalog: June 2024 - Monterey County, Facilities

Version: 2.0

Job Order: JF02-24-14-J8552-01

Approved

Proposal Value: \$336,903.41

Job Order Name: 1410 Natividad Rd-Monterey County Jail Electrical
Emergency Repairs Supplemental 1- Lighting

Approved Date: May 11, 2026

Location: 1410 Natividad MCSO 1410 Natividad Rd Salinas, CA 93901

Contractor: Staples Construction Company

Contract Number: JOC FACILITIES 2024-02

Contract Name: FAC 2024-02 - Staples

26 Electrical \$336,903.41

Record #	CSI Number	Description	Type	Quantity	Unit Price	UOM	Factor	Line Total
1	Non-PrePriced Item	MoCo Jail Suppl 1 Fixture Package and Installation		1.00	\$298,303.00	EA	1.1294	\$336,903.41

Accepted

History: 1.1 Added, 2.0 Accepted

Includes Labor No Includes Equipment No Includes Materials No

User Note: Per county direction email 4/17/2026

Total:	\$336,903.41
---------------	---------------------

Division 26 Electrical Total: **\$336,903.41**

Proposal Total: \$336,903.41

Div **The Percentage of Non Pre-Priced on this Proposal: 100.0%**

Job Order Contract

Non-Prepriced Worksheet

Date: 4/22/2622/26

Contractor: SStaples

Contract #: FAC 2024-02

Project #: JF02JF02-24-14-J8552-01

Task Order #: 52-01

Title: 11410 Natividad Rd-Monterey County Jail Electrical Emergency Repairs Supplemental 1- Lightingg

Non-Prepriced Task

Please list the Supplier/Subcontractor name and task amount below. Attach three (3) independent quotes for the Non-Prepriced (NPP) task in the Price Proposal.

1. JM Electic _____ \$ 298,500 _____

2. Aragon Electrical _____ \$ 378,720.00 _____

3. Collins Electric _____ \$ 298,303.00 _____

4. Corvid Electric _____ \$381,414.04 _____

Which quote will be used (check one):
 1 2 3 4 Type text here

Contractors are required to use the most economical of the three quotes. If an alternate quote has been selected, or the Contractor is unavailable to provide three quotes, please provide justification below.

Tom Scheel
Contractor Project Manager

4/22/26
Date

Project Manager

Date



3412 Metro Drive, Stockton, CA 95215 • Tel (209) 466-3691 • Fax (209) 466-3146

PROPOSAL

April 22, 2026

Attention: Monterey County Jail
Project: #26MAR021S – MCJ – Replace Damaged Lights REV 5
Bid Date: 3/30/26

Collins Electrical Company, Inc. is pleased to provide an Electrical Work proposal for the above referenced project. We acknowledge the following bid documents:

- Drawings: New Jail – Electrical Plans (marked up to include Rec Area replacement fixtures).
• Fixture Schedule from original bid set of plans dated 3/16/2017.
• Final Scope of Work dated 1/6/26.

Table with 2 columns: Item Description and Amount. Items include BASE BID (\$298,303.00), Breakout Type BD (9) (\$6,924.01), Breakout Type BDE (66) (\$64,375.33), Breakout Type N (2) (\$1,199.72), Breakout Type NE (44) (\$41,575.74), Breakout Type HD (6) (\$7,717.73), Breakout Type HDE (18) (\$26,664.56), Breakout Pole Mnt Fixture (1) (\$1,311.00), Breakout Type KD (2) (\$1,799.58), and Breakout Type KDE (7) (\$6,298.55).

Please note the following inclusions, exclusions and clarifications as qualifications to this proposal.

Inclusions:

- Removal and replacement of (155) existing fixtures in the jail.
• One for one replacement based on bid set fixture schedule.
• Replacement of 1 exterior pole mount fixture.
• Safe off as necessary to replace lights.
• Breakout fixture pricing includes:
o Cost to furnish fixture only.

Exclusions:

- Bonding. If a bond is required, please add 1% to bid.
• Permits and/or fees (utility, inspection, air quality control, engineering, etc.).





Electrical Contractors Since 1928

3412 Metro Drive, Stockton, CA 95215 • Tel (209) 466-3691 • Fax (209) 466-3146

- Any allowances, and/or contingencies not specifically noted in this proposal.
- Wall/ceiling openings, and/or pole base removal.
- Hazardous materials abatement, disposal, and/or working in or around.
- Repairs to existing sprayed on fireproofing.
- Blocking, backing, framing, fire rated enclosures, and/or ceiling/wall access doors of any kind.
- Costs of construction plans and specifications. Any fees or costs for (.dwg) CAD background files: Collins will require .dwg files for construction and as-built drawings.
- Temporary electricity, lighting, water, sewer, dumpsters, fencing, and/or portable toilets.
- Scaffolding and/or man/material hoists.
- Finger printing fees, parking fees, badge-identification fees, and/or drug testing costs.
- Painting other than electrical touch-up.
- Overtime, shift work, and/or premium time labor.
- Costs incurred due to unforeseen conditions.

Clarifications:

- The fixture for KDE does not come with a battery pack for the 2' fixture, they only offer this for the 4' fixture. I have included remote emergency battery packs that would need to be mounted in a secure area like an electrical room.
- This proposal is based on a normal (40) hour work week and our Standard Terms and Conditions.
- This proposal is valid for 30 days.
- FORCE MAJEURE: for failure or delay to perform obligations under this agreement, which have become practicably impossible because of circumstances beyond the reasonable control of Collins Electrical Co., Inc. (herein "Force Majeure Event"). A Force Majeure Event shall include, without limitation: natural disasters or acts of God; acts of terrorism; labor disputes or stoppages; war; government acts or orders; tariffs, material escalations, labor escalations, epidemics, pandemics, or outbreak of communicable disease; public health emergency; quarantines; national or regional emergencies; or any other cause, whether similar in kind to the foregoing or otherwise, beyond Collins Electrical Co., Inc.'s reasonable control. Collins Electrical Co., Inc. shall provide prompt notice to Contractor of any failure or delay in performance due to a Force Majeure Event. In the event of a Force Majeure Event, Collins Electrical Co. Inc. shall be entitled to an equitable adjustment in the time of completion or contract requirements, and contract price, paid on actual cost basis.
- This proposal is based upon use of industry standard, code compliant materials and methods.
- **This proposal does not address any Title 24 requirements that are not specifically shown on the plans.**
- This proposal letter shall be incorporated in its entirety into the Subcontract Agreement and is based upon a mutually accepted construction schedule.

Should you have any questions or if we may be of further assistance, please do not hesitate to call (831)713-6702.

Sincerely,

Casey King



Member of National Electrical Contractors Association Since 1946
State License No. 115427
DIR No. 100000184
www.collinselectric.com



Electrical Contractors Since 1928

3412 Metro Drive, Stockton, CA 95215 • Tel (209) 466-3691 • Fax (209) 466-3146

Sr. Estimator
Marina Branch
Collins Electrical Co., Inc.
cking@collinselectric.com



Member of National Electrical Contractors Association Since 1946
State License No. 115427
DIR No. 100000184
www.collinselectric.com