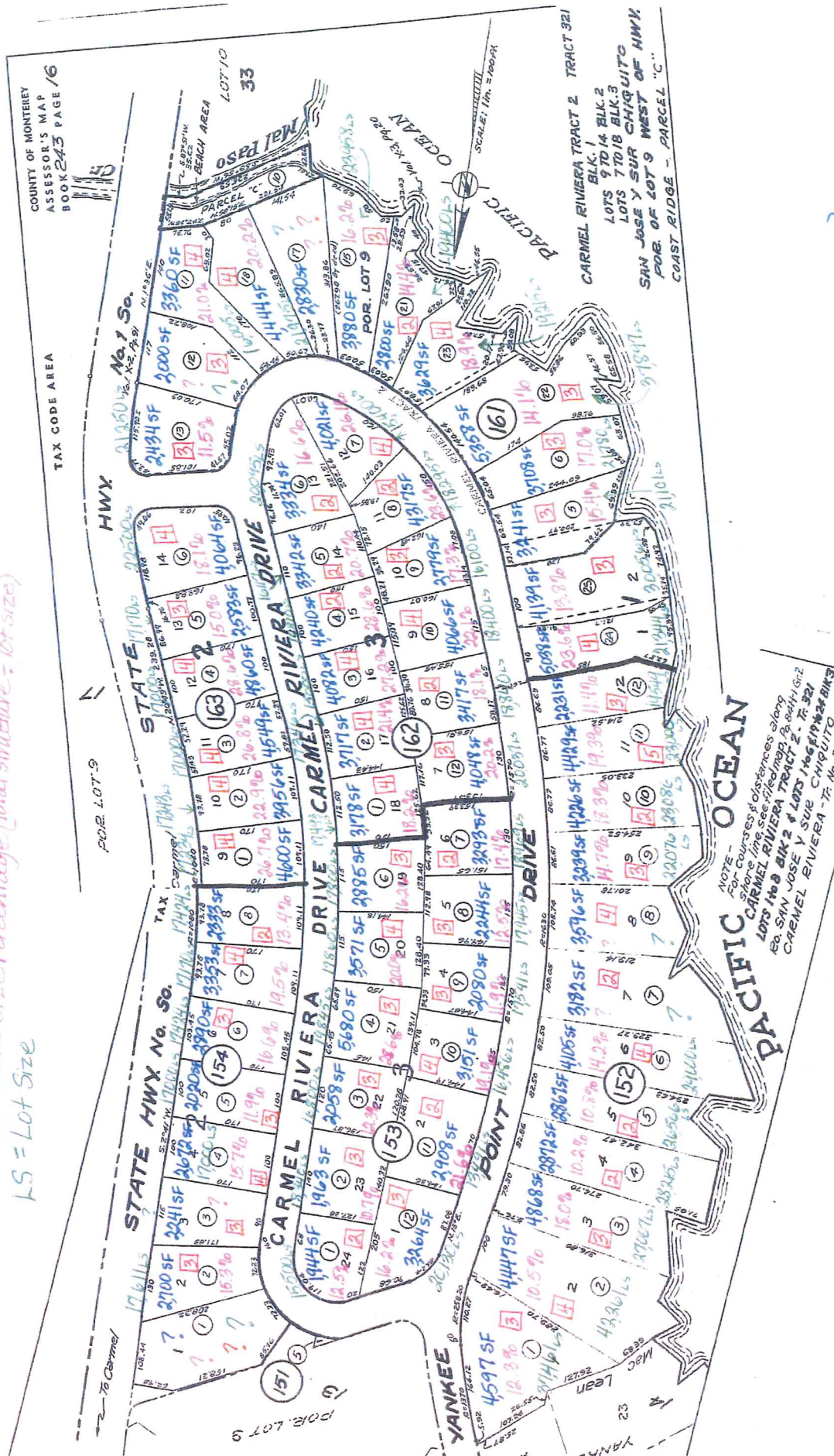


Attachment F

This page intentionally left blank.

COUNTY OF MONTEREY
ASSESSOR'S MAP
BOOK 243 PAGE 16

SF = Structure Size (house sf + garage sf)
 □ = Number of Bedrooms
 % = Structure Size Percentage (total structure ÷ lot size)
 LS = Lot Size



NOTE - For courses & distances along shore line see attached plat. For SAN JOSE Y SUR CHIQUITO CARMEL RIVIERA TRACT 2 - Tr. 321

Comparison of Wenglikowski variance (approved) to Jordan variance (requested)

	Wenglikowski	Jordan
Lot size	.42 ac.	.43 ac.
House size	4,549 sf	3,293 sf
# Bedrooms	4	2
Structure size as % of lot	26.8%	17.4%
# Stories	2	1
% coverage increase requested over existing	2% (approved)	1.9% (requested)

NUMBER OF BEDROOMS

APN	BEDROOMS
243-154-001	?
243-161-017	?
243-152-011	5
243-152-002	4
243-152-006	4
243-152-008	4
243-153-005	4
243-153-010	4
243-154-004	4
243-154-007	4
243-161-011	4
243-161-018	4
243-161-023	4
243-161-024	4
243-162-001	4
243-162-002	4
243-162-003	4
243-162-007	4
243-162-010	4
243-163-001	4
243-163-002	4
243-163-003	4
243-163-004	4
243-163-006	4
243-152-001	3
243-152-003	3
243-152-009	3
243-152-012	3
243-153-002	3
243-153-003	3
243-153-004	3
243-153-006	3
243-153-008	3
243-153-009	3
243-153-012	3
243-154-002	3
243-154-003	3
243-154-005	3
243-154-006	3
243-161-005	3
243-161-006	3
243-161-012	3
243-161-013	3
243-161-015	3
243-161-022	3
243-161-025	3
243-162-009	3
243-162-012	3
243-163-005	3
243-152-004	2
243-152-005	2
243-152-007	2
243-152-010	2
243-153-001	2
243-153-007	2
243-153-011	2
243-154-008	2
243-161-021	2
243-162-004	2
243-162-005	2
243-162-006	2
243-162-008	2
243-162-011	2

Jordan

LOT SIZE

APN	LOT SIZE
243-152-007	?
243-152-008	?
243-154-001	?
243-154-003	?
243-161-012	?
243-161-017	?
243-152-002	42,261
243-161-022	37,897
243-152-001	37,461
243-161-025	30,056
243-152-006	29,000
243-152-004	28,215
243-152-003	27,007
243-152-005	26566
243-161-015	23,958
243-152-010	23,086
243-152-011	23,000
243-163-006	22,500
243-152-009	22,076
243-161-018	21,975
243-161-006	21,780
243-161-024	21,344
243-161-013	21,250
243-161-005	21,101
243-153-012	20,130
243-162-006	20,095
243-162-012	20,037
243-153-004	19,845
243-152-012	19,549
243-161-021	19,400
243-161-023	19,215
243-153-007	18,969
243-162-011	18,840
243-162-010	18,400
243-153-002	18,340
243-162-008	18,295
243-153-008	17,945
243-153-005	17,860
243-153-006	17,800
243-154-002	17,611
243-153-009	17,541
243-162-001	17493
243-154-006	17,424
243-154-008	17424
243-162-002	17,346
243-163-002	17,243
243-163-001	17,239
243-154-007	17170
243-163-005	17,170
243-154-004	17,000
243-154-005	17,000
243-163-003	17,000
243-163-004	17,000
243-153-003	16,800
243-153-010	16,486
243-162-005	16,117
243-162-009	16,100
243-161-011	16,005
243-153-001	15,500
243-162-007	15,400
243-162-003	15,000
243-162-004	14,810
243-153-011	13,491

Jordan

STRUCTURE SIZE

APN	HOUSE SF	GARAGE SF	TOTAL SF
243-154-001	VACANT?	VACANT?	?
243-153-004	5,080	600	5,680
243-161-022	4,758	600	5,358
243-161-024	4,438	600	5,038
243-152-003	4,268	600	4,868
243-163-004	4,260	600	4,860
243-163-001	4,000	600	4,600
243-152-001	3,997	600	4,597
243-163-003	3,949	600	4,549
243-152-002	3,847	600	4,447
243-161-018	3,844	600	4,444
243-152-011	3,829	600	4,429
243-162-008	3,717	600	4,317
243-162-004	3,640	600	4,240
243-152-010	3,626	600	4,226
243-161-025	3,539	600	4,139
243-152-006	3,505	600	4,105
243-162-003	3,482	600	4,082
243-162-010	3,466	600	4,066
243-163-006	3,464	600	4,064
243-162-012	3,148	900	4,048
243-162-007	3,121	900	4,021
243-163-002	3,356	600	3,956
243-161-015	3,280	600	3,880
243-162-002	3,117	600	3,717
243-161-006	3,108	600	3,708
243-161-023	3,029	600	3,629
243-152-008	2,996	600	3,596
243-153-005	2,971	600	3,571
243-162-011	2,817	600	3,417
243-161-011	2,760	600	3,360
243-154-007	2,753	600	3,353
243-162-005	2,742	600	3,342
243-162-006	2,734	600	3,334
243-153-007	2,693	600	3,293
243-153-012	2,664	600	3,264
243-161-005	2,641	600	3,241
243-152-009	2,639	600	3,239
243-152-007	2,582	600	3,182
243-162-001	2,578	600	3,178
243-153-010	2,551	600	3,151
243-153-011	2,308	600	2,908
243-154-006	1,990	900	2,890
243-153-006	2,285	600	2,885
243-152-004	2,272	600	2,872
243-152-005	2,267	600	2,867
243-161-017	2,230	600	2,830
243-161-021	2,200	600	2,800
243-162-009	2,179	600	2,779
243-154-002	2,100	600	2,700
243-154-004	2,072	600	2,672
243-163-005	1,983	600	2,583
243-161-013	1,834	600	2,434
243-154-008	1,733	600	2,333
243-153-008	1,644	600	2,244
243-154-003	1,641	600	2,241
243-152-012	1,631	600	2,231
243-153-009	1,480	600	2,080
243-153-003	1,458	600	2,058
243-154-005	1,420	600	2,020
243-161-012	1,400	600	2,000
243-153-002	1,363	600	1,963
243-153-001	1,344	600	1,944

Jordan

STRUCTURE SIZE PERCENTAGE

APN	TOTAL STRUCTURE SF	LOT SIZE	TOTAL %
243-152-007	3,182	?	?
243-152-008	3596	?	?
243-154-001	?	?	?
243-154-003	2241	?	?
243-161-012	2000	?	?
243-161-017	2830	?	?
243-162-004	4,240	14,810	28.6%
243-153-004	5,680	19,845	28.6%
243-166-004	4,860	17,000	28.6%
243-162-003	4,082	15,000	27.2%
243-163-003	4,549	17,000	26.8%
243-163-001	4,600	17,239	26.7%
243-162-007	4,021	15,400	26.1%
243-161-024	5,038	21,344	23.6%
243-162-008	4,317	18,295	23.6%
243-163-002	3,956	17,243	22.9%
243-162-010	4,066	18,400	22.1%
243-153-011	2,908	13,491	21.6%
243-162-002	3,717	17,346	21.4%
243-161-011	3,360	16,005	21.0%
243-162-005	3,342	16,117	20.7%
243-161-018	4,444	21,975	20.2%
243-162-012	4,048	20,037	20.2%
243-153-005	3,571	17,860	20.0%
243-154-007	3,353	17,170	19.5%
243-152-011	4,429	23,000	19.3%
243-153-010	3,151	16,486	19.1%
243-161-023	3,629	19,215	18.9%
243-152-010	4,226	23,086	18.3%
243-162-001	3,178	17,493	18.2%
243-162-011	3,417	18,840	18.1%
243-163-006	4,064	22,500	18.1%
243-152-003	4,868	27,007	18.0%
243-153-007	3,293	18,969	17.4%
243-162-009	2,779	16,100	17.3%
243-161-006	3,708	21,780	17.0%
243-162-006	3,334	20,095	16.6%
243-154-006	2,890	17,424	16.6%
243-153-012	3,264	20,130	16.2%
243-153-006	2,885	17,800	16.2%
243-161-015	3,880	23,958	16.2%
243-154-004	2,672	17,000	15.7%
243-161-005	3,241	21,101	15.4%
243-154-002	2,700	17,611	15.3%
243-163-005	2,583	17,170	15.0%
243-152-009	3,239	22,076	14.7%
243-161-021	2,800	19,400	14.4%
243-152-006	4,105	29,000	14.2%
243-161-022	5,358	37,897	14.1%
243-161-025	4,139	30,056	13.8%
243-154-008	2,333	17,424	13.4%
243-153-001	1,944	15,500	12.5%
243-153-008	2,244	17,945	12.5%
243-152-001	4,597	37,461	12.3%
243-153-003	2,058	16,800	12.3%
243-154-005	2,020	17,000	11.9%
243-153-009	2,080	17,541	11.9%
243-161-013	2,434	21,250	11.5%
243-152-012	2,231	19,549	11.4%
243-152-005	2,867	26,566	10.8%
243-153-002	1,963	18,340	10.7%
243-152-002	4,447	42,261	10.5%
243-152-004	2,872	28,215	10.2%

Jordan